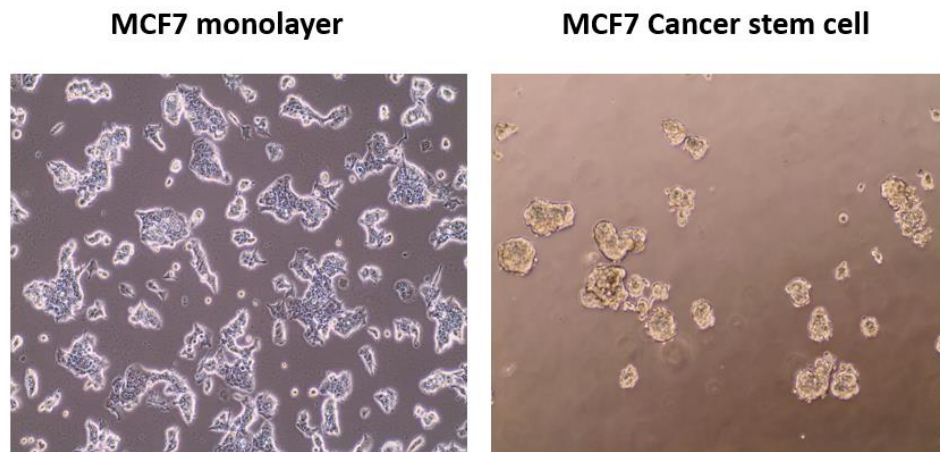


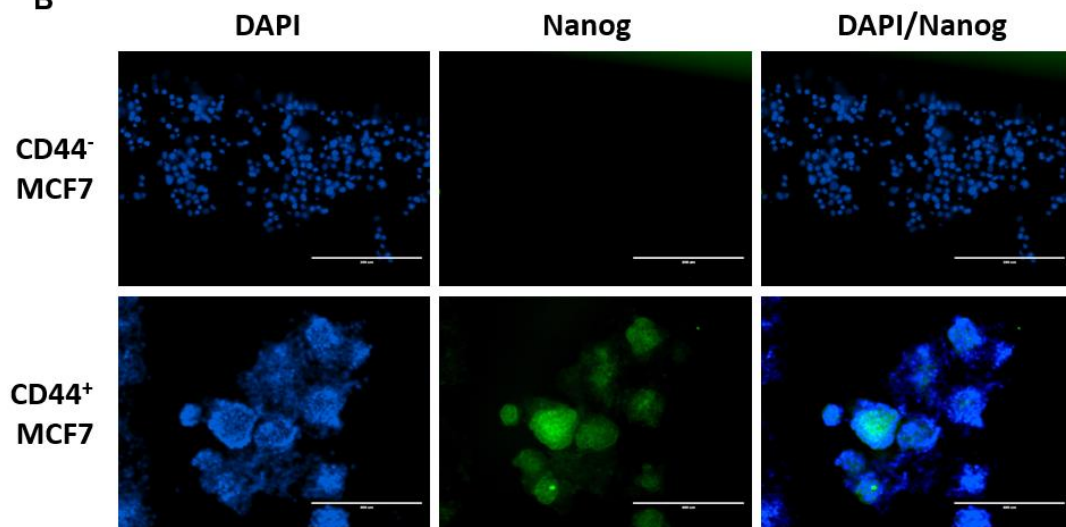
Supplementary Materials

Supplementary Figure 1

A



B



Supplementary Figure 1. Characterization of isolated CD44⁺ CSCs. (A) MCF7 monolayer cells and isolated MCF7 CSCs using CD44-positive magnetic beads are shown. (B) Confocal microscopic images revealed the expression of Nanog as a stemness marker. The bars indicate 400 μ m. The nucleus was visualized by DAPI staining.