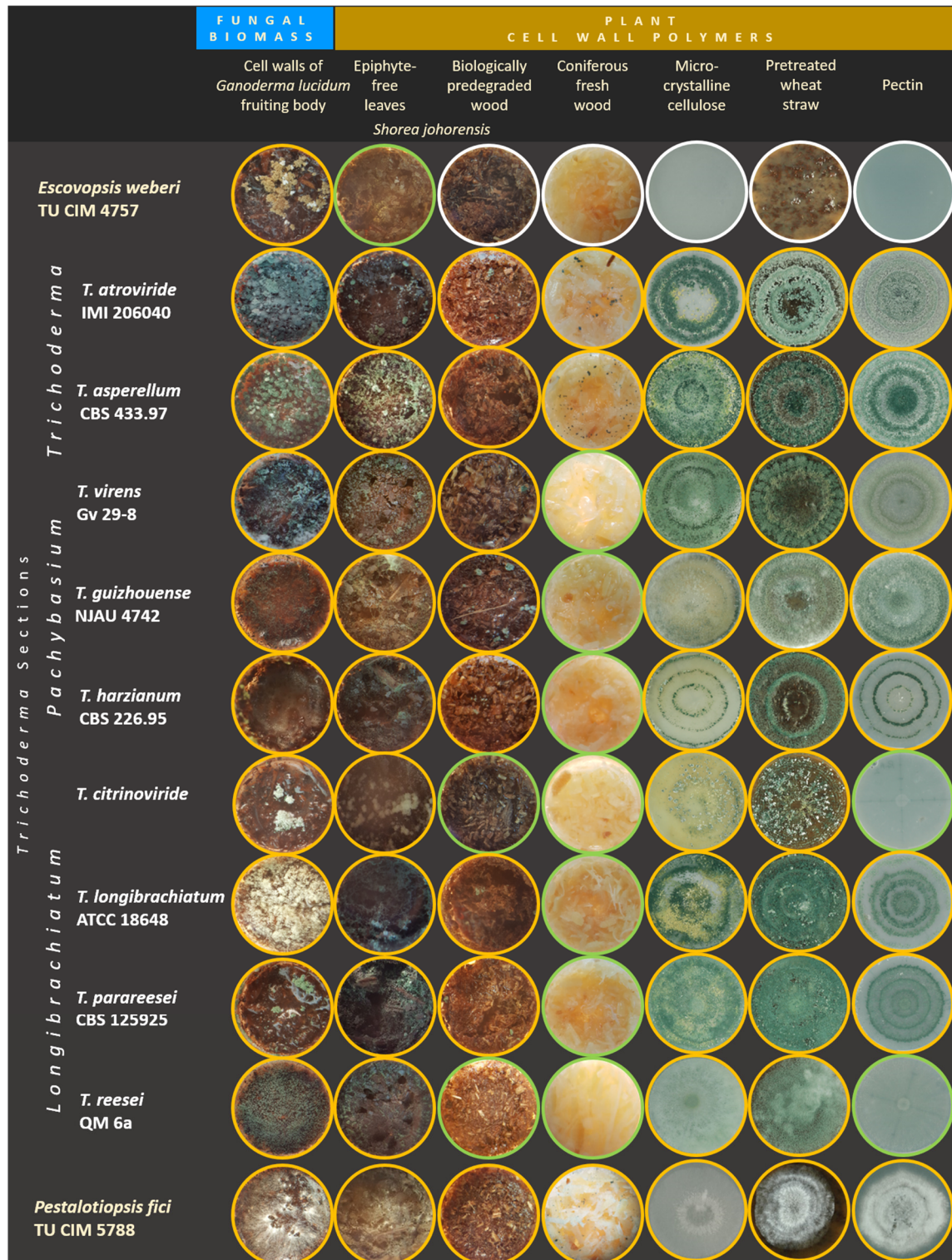


S1 Figure: Growth of *Trichoderma* spp., *Escovopsis weberi* and *Pestalotiopsis fici* on natural substrates resembling polymers in the fungal and plant cell walls.



Strains were evaluated after 10 days of incubation at 28°C in darkness. Yellow, green and white shape outlines correspond to good, weak and no growth, respectively. The first four assays were done in 24-well plates. The last three columns show assays in Petri plates, 9 cm in diameter. Data are representatives of four separate experiments.