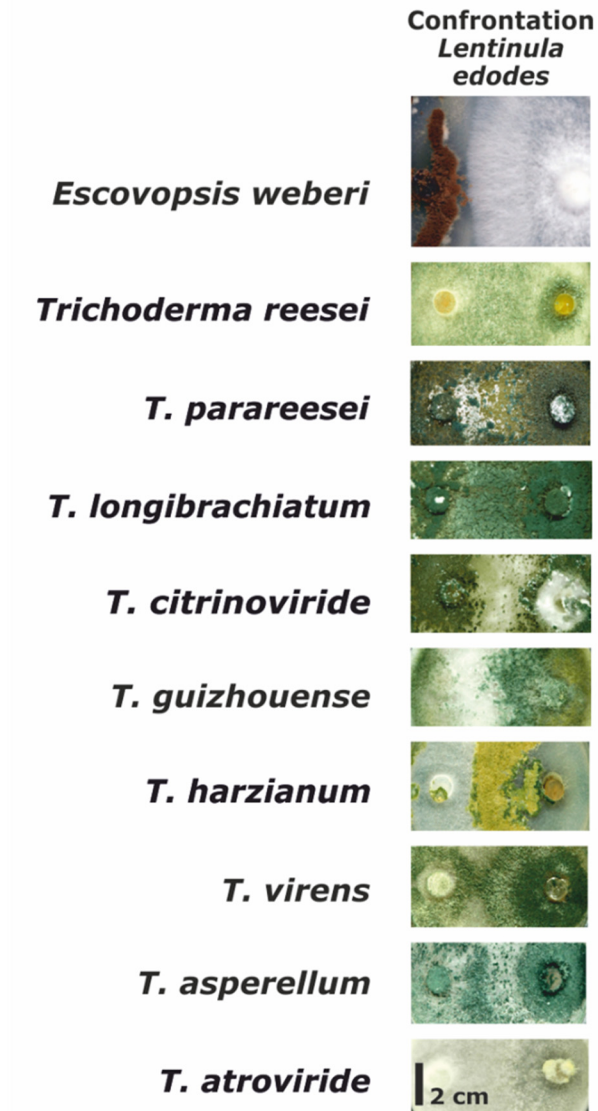
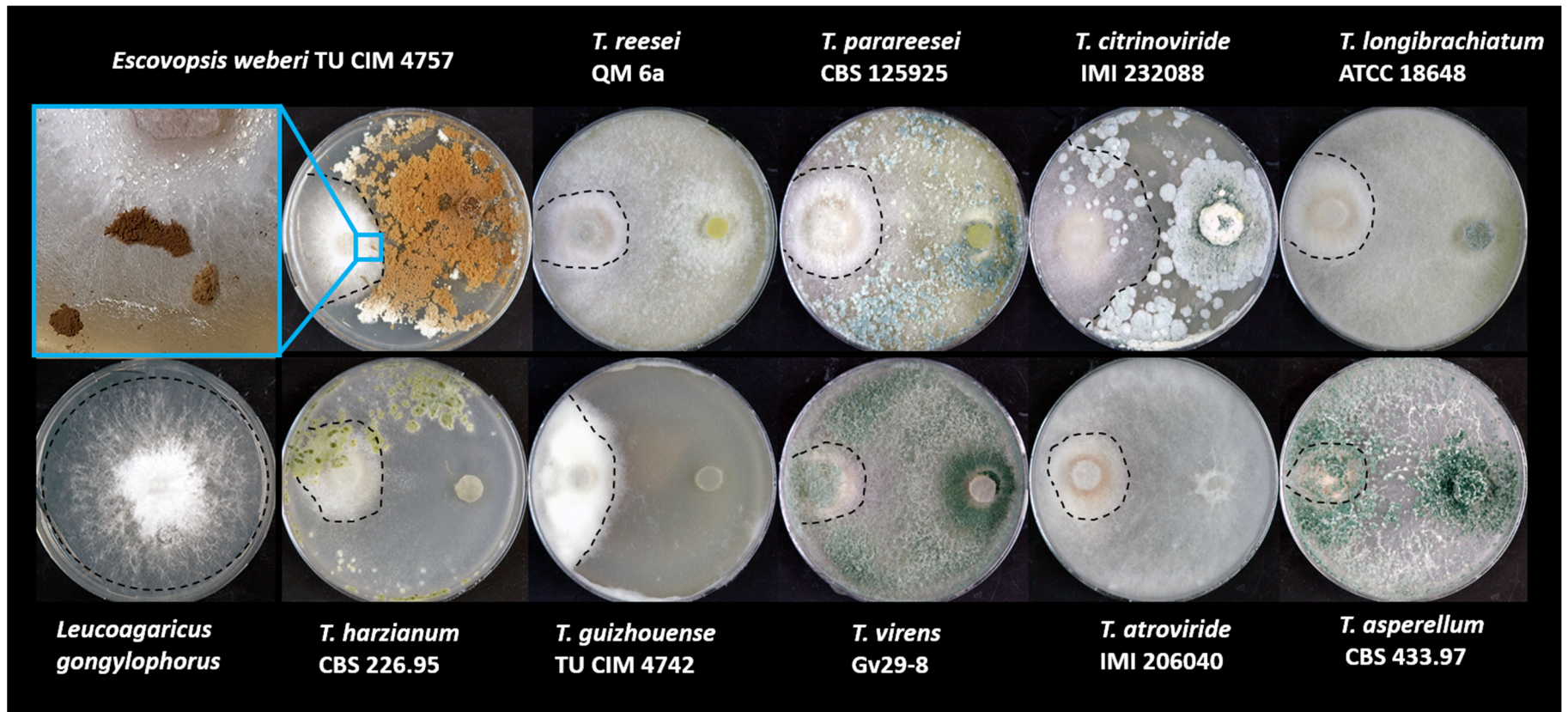
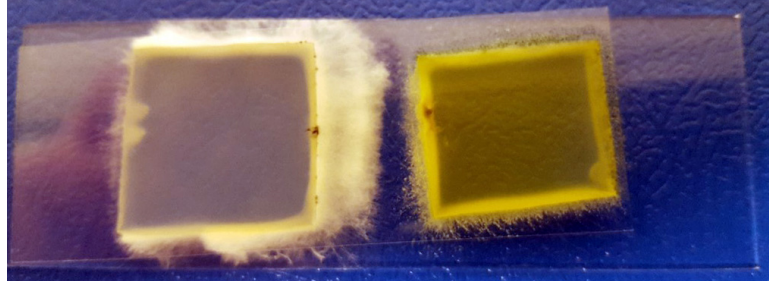


S3 Figure: Mycoparasitism of *Trichoderma*.A. Allomycoparasitism of *Trichoderma* spp. and *E. weberi* on *Lentinula edodes*.

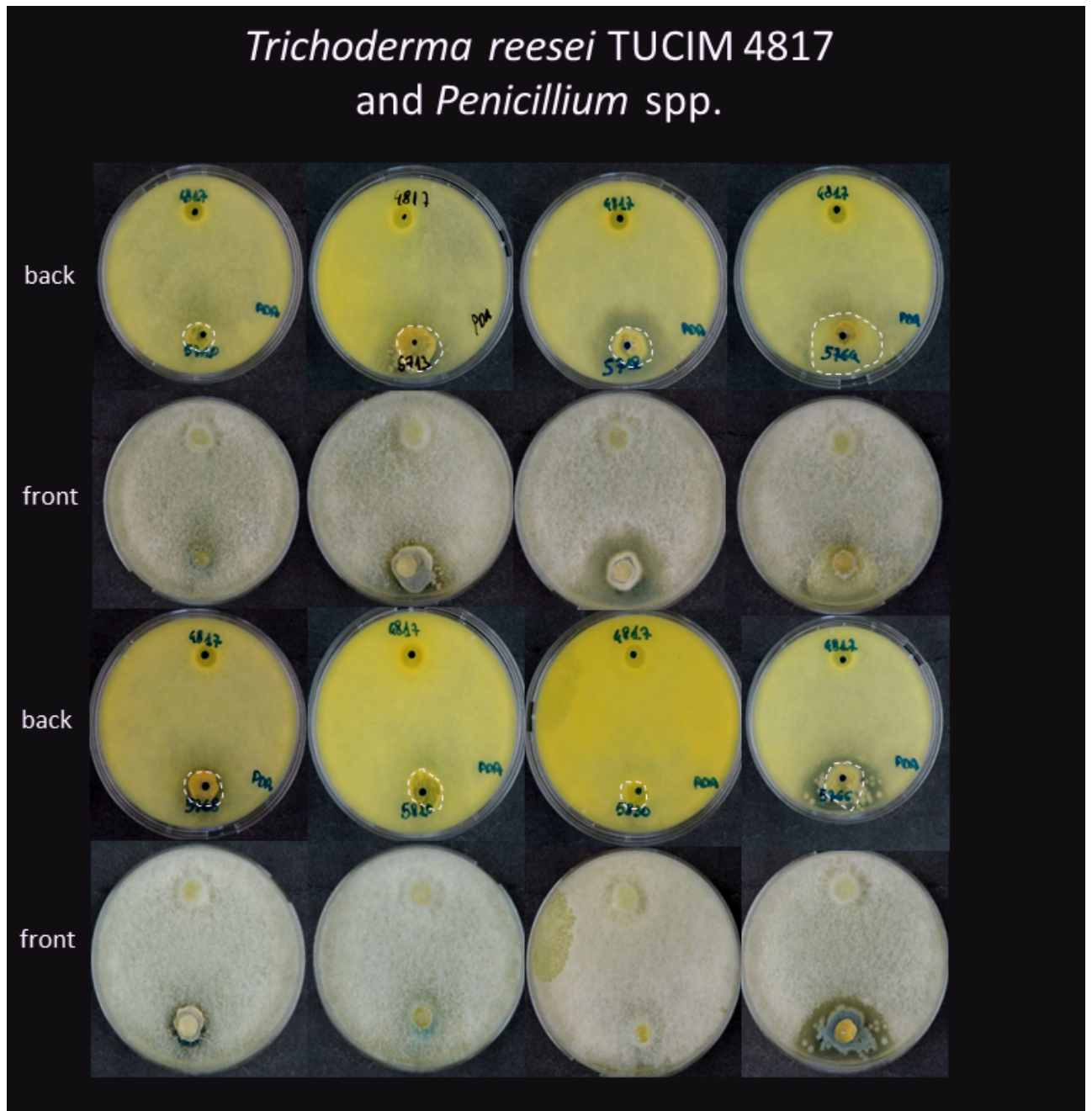
B. Allomycoparasitism of *Trichoderma* and *E. weberi* on *Leucoagaricus gongylophorus*. The dashed lines indicate growth of the host fungus as deduced from back sides of the plates.



- C. Set up for the microscopic investigation of *Trichoderma* (right) parasitism on *Pestalotiopsis fici* (left). 2 cm² agar plugs were located between a sterile microscopy glass slide and a 5 x 2.5 cm sterile glass cover slip and aseptically inoculated with spores of two partner fungi, respectively, using a microbiological needle. Inoculated cultures were maintained at 28°C in wet chamber until hyphal contact. Microscopic investigation was done for hyphae on the cover slip surface.



D. Antagonism of selected *Trichoderma* species on *Penicillium* spp. Dashed line indicates growth of the host fungus.



Trichoderma guizhouense TUCIM 4741 and *Penicillium* spp.

