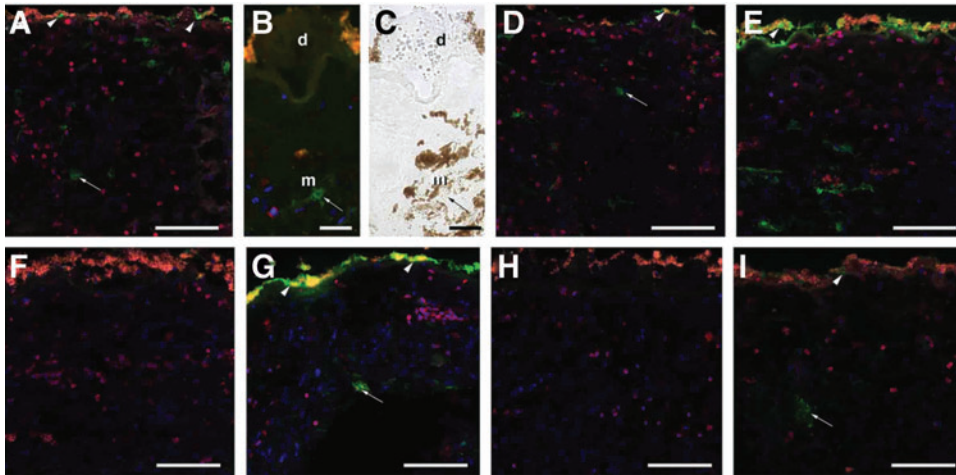


Supplementary Data



Supplementary Figure S1. Tropism of human RPE-choroidal organ cultures to AAV. Cultures were incubated with AAV1 (**A–C**), AAV2 (**D**), AAV4 (**E**), AAV5 (**F**), AAV6 (**G**), AAV8 (**H**), and AAV9 (**I**). Green fluorescence indicates anti-GFP antibody, and red fluorescence depicts anti-CD45. Orange-yellow autofluorescence is due to RPE lipofuscin. Note the labeling of the RPE (*arrowheads*) in (**A**), (**D**), (**E**), (**G**), and (**H**), the numerous CD45-positive cells, and the GFP-positive fibroblastic/dendritiform cells in the choroidal stroma (*arrows*). Panels (**B**) (fluorescence) and (**C**) (bright field) depict a higher magnification view of the transduced choroidal stroma cells (*arrow*) and their interdigitation with melanocytes (m). A druse (d) is also present in the field. (**A**) and (**D–I**) were photographed under identical conditions. Scale bars for (**A**) and (**D–I**) indicate 100 μm , and scale bars for (**B**) and (**C**) indicate 25 μm .
