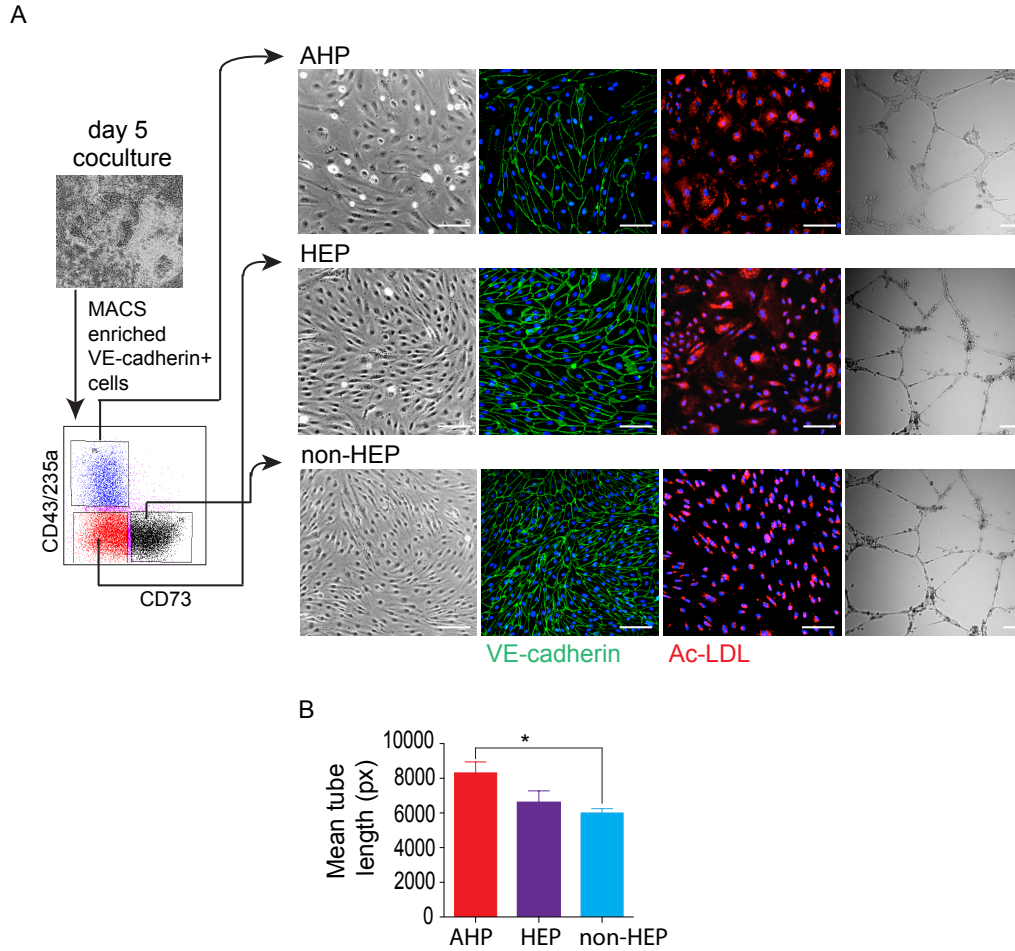


Supplementary Data



SUPPLEMENTARY FIG. S1. Characterization of V⁺ ECs isolated from fibroblast derived iPSCs (A) Phenotype and functionality of endothelial subsets studied by immunostaining, ACLDL uptake and tube formation. (B) Quantification of the tubes formed by each subset. Results represent the average \pm SEM of 3 independent experiments. * $P < .05$ by Student paired t test. Scale bar represents 100 μ m.