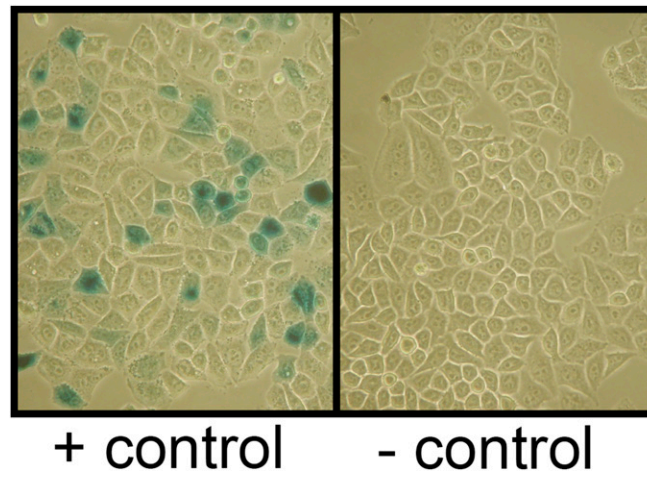
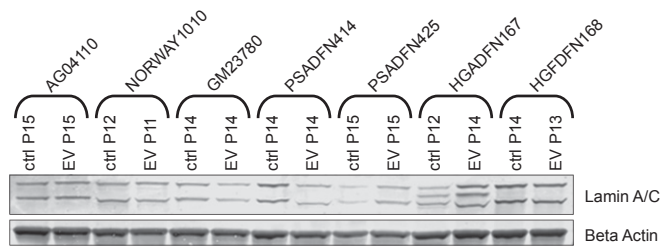


# Supporting Information

DuBose et al. 10.1073/pnas.1802811115



**Fig. S1.**  $\beta$ -Galactosidase staining of control cells. HeLa cells transfected with a  $\beta$ -galactosidase expression plasmid were used as a positive control for  $\beta$ -galactosidase staining, and nontransfected HeLa cells were used as a negative control. (Magnification: 200 $\times$ .)



**Fig. S2.** Lamin A/C isoforms are unchanged after 2 wk of everolimus treatment. Western blots of lamin A/C and  $\beta$ -actin are shown for everolimus (EV)-treated and vehicle control (ctrl)-treated cell lines. All cell lines were treated three times per week for 2 wk with 0.1  $\mu$ M everolimus or vehicle control. Passage (P) number at collection is indicated.

## Other Supporting Information Files

[Table S1 \(DOCX\)](#)

[Table S2 \(DOCX\)](#)