

The role of primary lymph node sites in survival and mortality prediction in Hodgkin Lymphoma: A SEER population-based retrospective study.

Supplementary materials for online publication

Supplementary table 1: Ann Arbor staging criteria based on EOD* 10 - extent (1988-2003); CS extension (2004+); EOD 4 - extent (1983-1987) according to the SEER database:**

Stage I
1983-1987: EOD 4 - extent (1983-1987) = 1
1988-2003: EOD 10 - extent (1988-2003) = 10-11
2004+: CS extension (2004+) = 100-120
Stage II
1983-1987: EOD 4 - extent (1983-1987) = 2
1988-2003: EOD 10 - extent (1988-2003) = 20-21
2004+: CS extension (2004+) = 200-230
Stage III
1983-1987: EOD 4 - extent (1983-1987) = 3
1988-2003: EOD 10 - extent (1988-2003) = 30-33
2004+: CS extension (2004+) = 300-330
Stage IV
1983-1987: EOD 4 - extent (1983-1987) = 8
1988-2003: EOD 10 - extent (1988-2003) = 80
2004+: CS extension (2004+) = 800
Unknown
All other values

*Extent of Disease

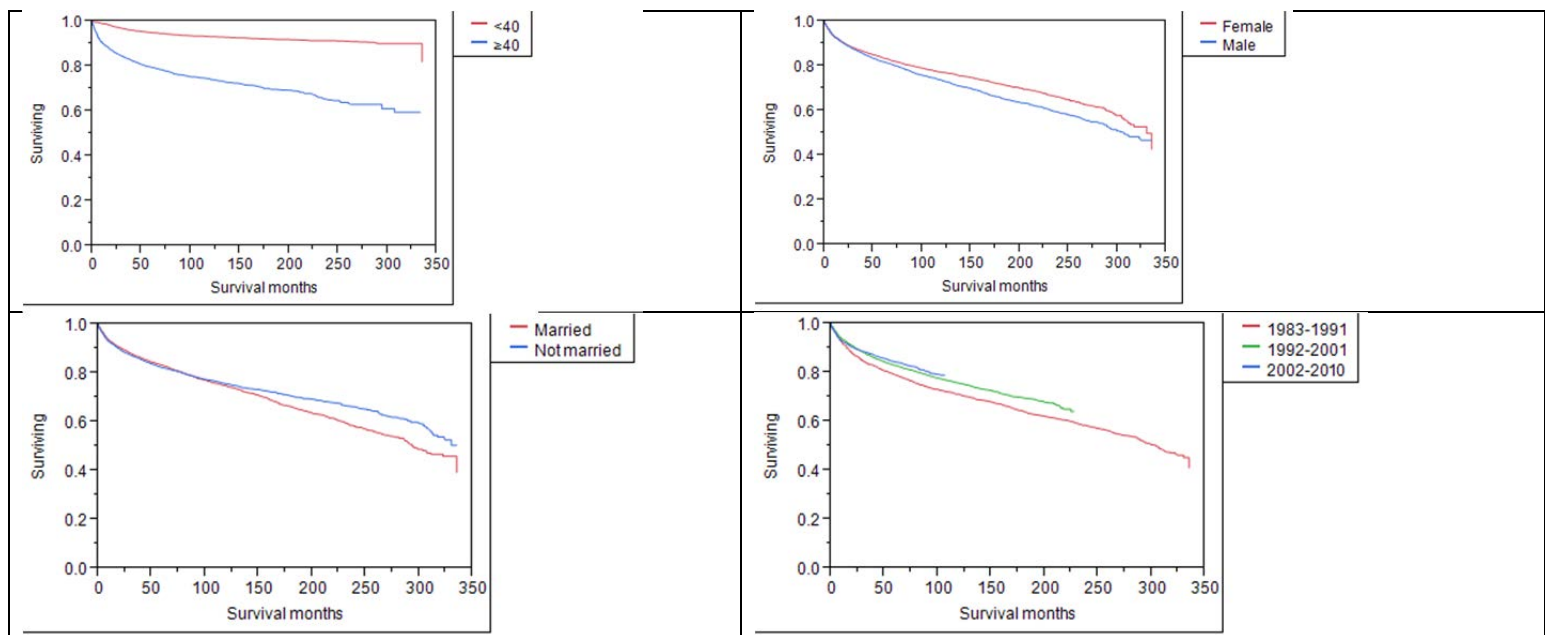
**Clinical Stage

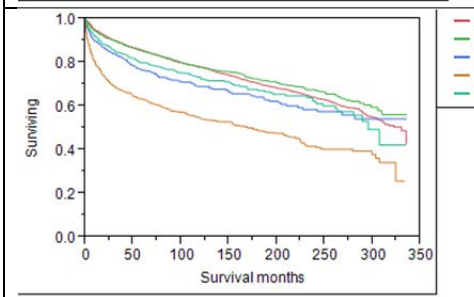
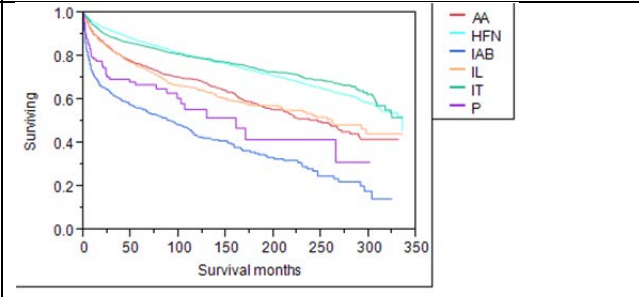
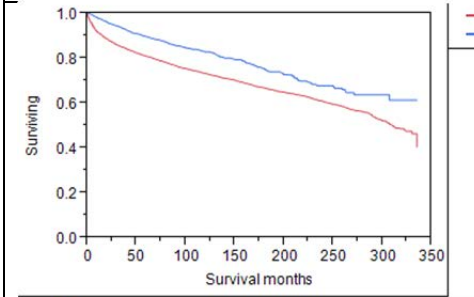
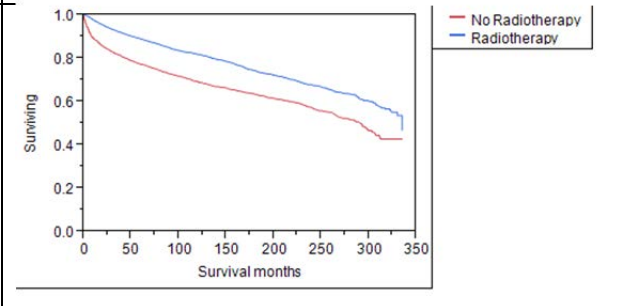
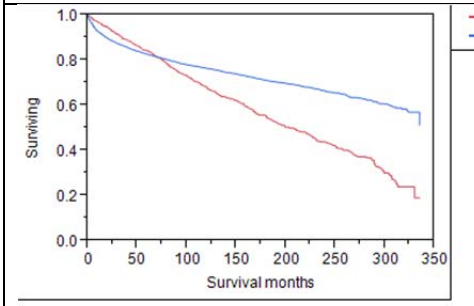
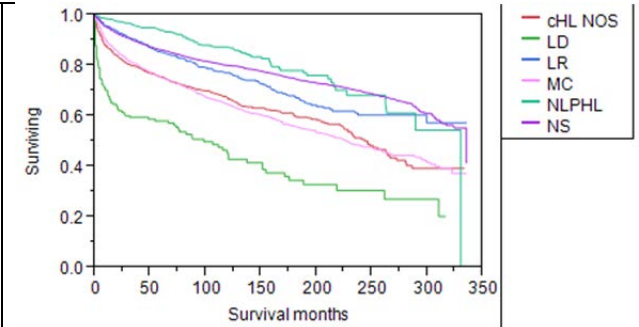
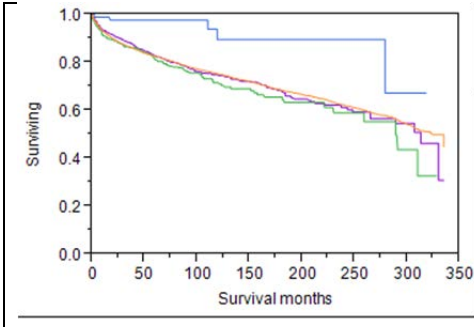
Supplementary Table 2 : Time-interval overall survival (OS) and cancer-specific survival (CSS) across all patient characteristics using the Kaplan-Meier (KM) curves: NLPHL=Nodular Lymphocytic Predominant Hodgkin Lymphoma, LR= Lymphocyte-rich, LD= Lymphocyte-depleted, MC= Mixed cellularity, NS= Nodular sclerosis, cHL= classical Hodgkin Lymphoma, LN= Lymph Nodes, HFN= Head, face, and neck, IT= Intrathoracic, IAB= Intra-abdominal, AA= Axilla or arm, IL= Inguinal region or leg, P= Pelvic, Other*= Includes American Indian, AK Native, Asian, and Pacific Islander, Not married= Includes single, widowed, separated, and divorced.**

Characteristic	1-year OS	5-year OS	10-year OS	P-value	1-year CSS	5-year CSS	10-year CSS	P-value
Patient age (years)	< 0.0001							< 0.0001
≤ 20	0.9917	0.96	0.9373		0.9947	0.9677	0.9536	
21-40	0.9811	0.9243	0.8897		0.9873	0.9427	0.9236	
41-60	0.9399	0.8366	0.7311		0.9599	0.8911	0.8456	
61-80	0.7724	0.5511	0.3626		0.834	0.6839	0.6146	
≥ 81	0.5276	0.2215	0.045		0.6463	0.4533	0.278	
Year of diagnosis	< 0.0001							< 0.0001
1983-1987	0.9065	0.7809	0.7009		0.9297	0.8391	0.801	
1988-2003	0.93	0.8274	0.7532		0.9525	0.8842	0.8541	
2004-2010	0.9248	0.8501	N/A		0.9467	0.8974	N/A	
Patient gender	< 0.0001							0.4496
Male	0.9269	0.8206	0.7364		0.9511	0.8832	0.8467	
Female	0.9239	0.8377	0.7733		0.944	0.8814	0.8563	
Race	0.0029							0.0648
White	0.9248	0.8276	0.753		0.9474	0.8825	0.8519	
Black	0.9333	0.8276	0.7473		0.9524	0.877	0.8388	
Other*	0.9083	0.8103	0.7236		0.9419	0.8778	0.8385	
Unknown	0.9897	0.9768	0.8966		0.9897	0.9768	0.9768	
Lymphoma Subtype recoded	< 0.0001							< 0.0001
NLPHL	0.9849	0.9425	0.8754		0.9945	0.9777	0.9534	
LR	0.9552	0.8526	0.7702		0.9776	0.9267	0.9081	
MC	0.8859	0.7505	0.6462		0.9206	0.8296	0.7925	
LD	0.6847	0.5863	0.4333		0.7249	0.6473	0.5484	
NS	0.9494	0.8631	0.8021		0.9655	0.9038	0.8768	
cHL, NOS	0.871	0.7586	0.6707		0.9047	0.8317	0.7831	
Radiation therapy	< 0.0001							< 0.0001
Radiotherapy	0.9726	0.8904	0.8197		0.9837	0.9331	0.907	
No Radiotherapy	0.8862	0.7746	0.6926		0.9177	0.8382	0.8007	
Surgery	< 0.0001							< 0.0001
Surgery	0.9775	0.8982	0.8304		0.9871	0.9389	0.9149	
No Surgery	0.9128	0.8106	0.7336		0.9383	0.8682	0.8351	
Sequence number	< 0.0001							0.0156
One primary only	0.9218	0.8271	0.7655		0.9447	0.8799	0.854	
First of two or more primaries	0.9629	0.8412	0.6758		0.9805	0.909	0.8391	

<i>Marital status at diagnosis</i>			<i>0.008</i>			<i>0.475</i>		
<i>Not married**</i>	<i>0.9228</i>	<i>0.8236</i>	<i>0.7573</i>	<i>0.9433</i>	<i>0.8753</i>	<i>0.845</i>		
<i>Married</i>	<i>0.9288</i>	<i>0.8331</i>	<i>0.7477</i>	<i>0.9535</i>	<i>0.8905</i>	<i>0.8578</i>		
<i>Stage</i>			<i>< 0.0001</i>			<i>< 0.0001</i>		
<i>Unknown</i>	<i>0.9135</i>	<i>0.7996</i>	<i>0.7243</i>	<i>0.9416</i>	<i>0.864</i>	<i>0.8298</i>		
<i>I</i>	<i>0.9452</i>	<i>0.8553</i>	<i>0.7799</i>	<i>0.9647</i>	<i>0.9087</i>	<i>0.8816</i>		
<i>II</i>	<i>0.9374</i>	<i>0.8523</i>	<i>0.7796</i>	<i>0.9574</i>	<i>0.899</i>	<i>0.8636</i>		
<i>III</i>	<i>0.8962</i>	<i>0.7669</i>	<i>0.6937</i>	<i>0.9276</i>	<i>0.8297</i>	<i>0.7977</i>		
<i>IV</i>	<i>0.7871</i>	<i>0.6352</i>	<i>0.548</i>	<i>0.8255</i>	<i>0.7018</i>	<i>0.6501</i>		
<i>Primary LN site</i>			<i>< 0.0001</i>			<i>< 0.0001</i>		
<i>LN of IL</i>	<i>0.8975</i>	<i>0.7477</i>	<i>0.6452</i>	<i>0.9293</i>	<i>0.8257</i>	<i>0.7723</i>		
<i>LN of HFN</i>	<i>0.9517</i>	<i>0.8685</i>	<i>0.7945</i>	<i>0.9688</i>	<i>0.9173</i>	<i>0.8888</i>		
<i>IT LNs</i>	<i>0.9383</i>	<i>0.8522</i>	<i>0.7932</i>	<i>0.9559</i>	<i>0.8892</i>	<i>0.8595</i>		
<i>IAB LNs</i>	<i>0.7001</i>	<i>0.5589</i>	<i>0.4323</i>	<i>0.7532</i>	<i>0.6384</i>	<i>0.5769</i>		
<i>LN of AA</i>	<i>0.8968</i>	<i>0.7621</i>	<i>0.6896</i>	<i>0.9307</i>	<i>0.8405</i>	<i>0.8157</i>		
<i>P LNs</i>	<i>0.7781</i>	<i>0.6695</i>	<i>0.5565</i>	<i>0.8114</i>	<i>0.7464</i>	<i>0.6932</i>		

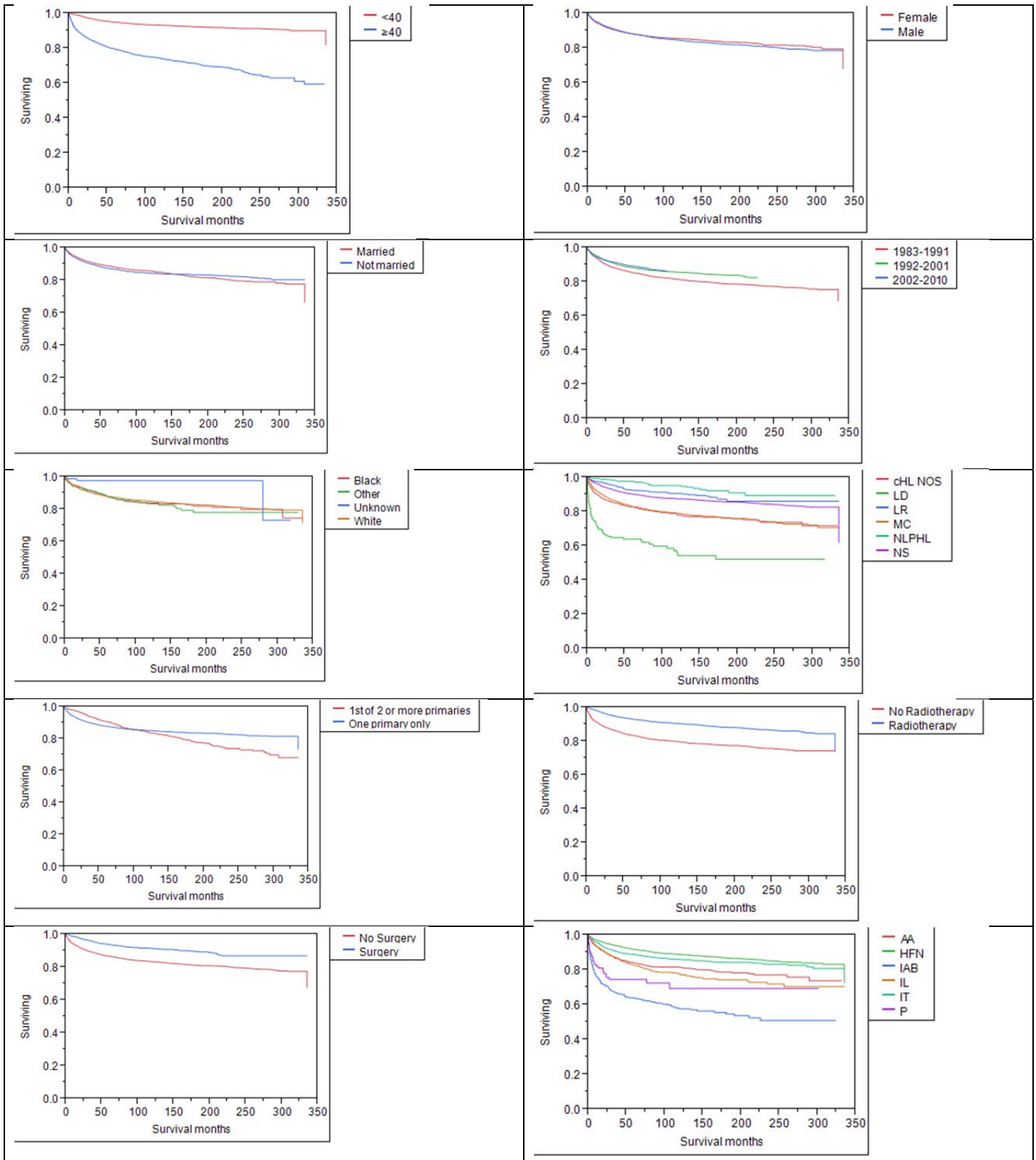
Supplementary figure 2: Kaplan-Meier Curves for OS based on all included basic patient characteristics:

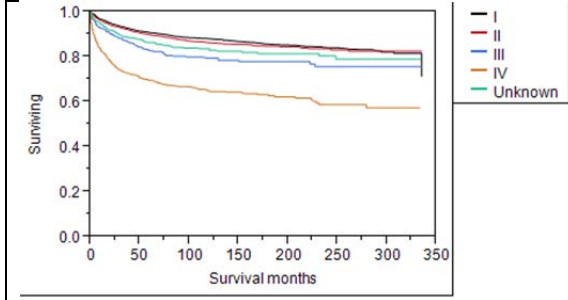




All Log Rank tests are statistically significant for different levels of the study cohort characteristics.

Figure 3: Kaplan-Meier Curves for CSS based on all included basic patient characteristics:





Log Rank tests resembling different levels of the study cohort characteristics were statistically significant with the exception of patients' gender, race, and marital status.