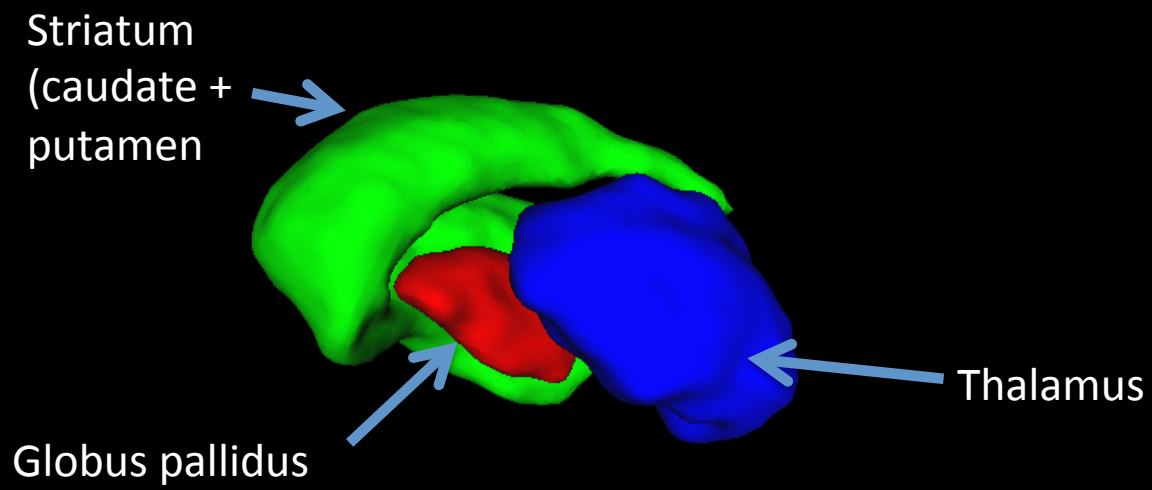


Supplemental Figure 1: The templates of the striatum, globus pallidus and thalamus that were used in the study are shown in a right medial view.



Supplementary Figure 2: Regions where the OCD patients showed significant increase in globus pallidus surface area compared to controls are shown in green. While significant at a nominal $p < 0.05$, these differences did not survive adjustment for multiple comparisons using the false discovery rate procedure (setting $q < 0.05$). There were no regions where the unaffected siblings and the OCD patients both showed significant expansion relative to controls.

