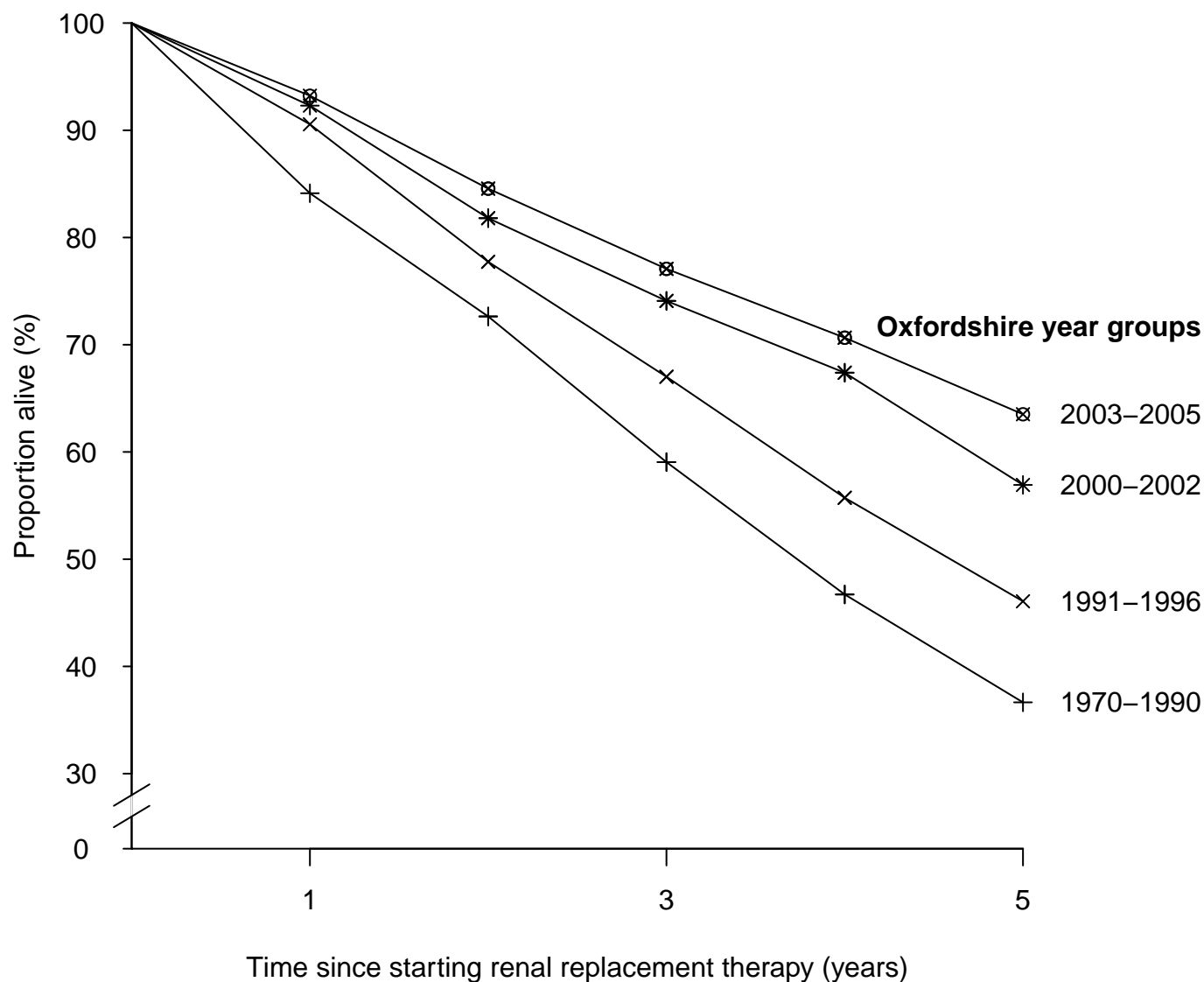


Supplemental figure 4: Standardized one- to five-year survival probabilities in new treated end-stage renal disease patients



Oxfordshire year groups

2003-2005 †	93.2% (91.6%-94.9%)	77.1% (73.9%-80.2%)	63.5% (59.4%-67.7%)
2000-2002 †	92.3% (90.4%-94.2%)	74.1% (70.3%-77.9%)	56.9% (51.9%-61.9%)
1991-1996 *	90.6% (88.6%-92.5%)	67.0% (63.1%-70.9%)	46.1% (40.9%-51.2%)
1970-1990 *	84.1% (80.9%-87.4%)	59.1% (53.6%-64.5%)	36.6% (29.8%-43.5%)

Survival probabilities are 100 minus the adjusted mortality rates, standardized by age, sex and comorbidities to an 'average' 1970-2008 renal replacement therapy population (see Supplemental Table 6 for characteristics). Excludes patients dying within 90 days. 95% confidence intervals included in parentheses. *Oxford Record Linkage Study. † Hospital Episode Statistics (Oxfordshire).