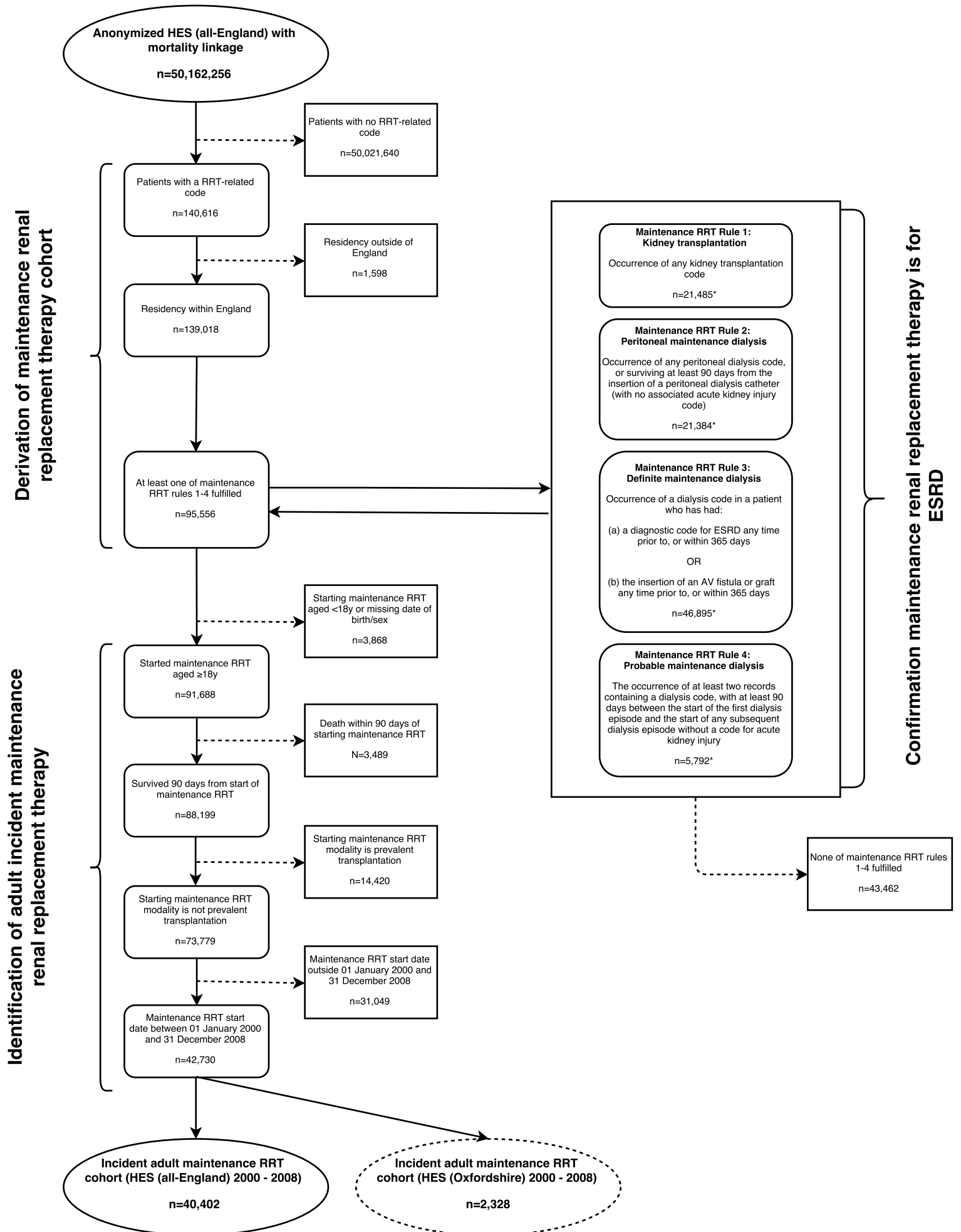


Supplemental figure 5: Treated end-stage renal disease cohort derivation (all-England HES 2000-2008)



AV = Arteriovenous. ESRD = End-stage renal disease. HES = Hospital Episode Statistics. RRT = Renal replacement therapy. (Code) refers to diagnostic or procedural codes. *Participants could fulfil more than one rule, but only the first rule which was fulfilled is counted.