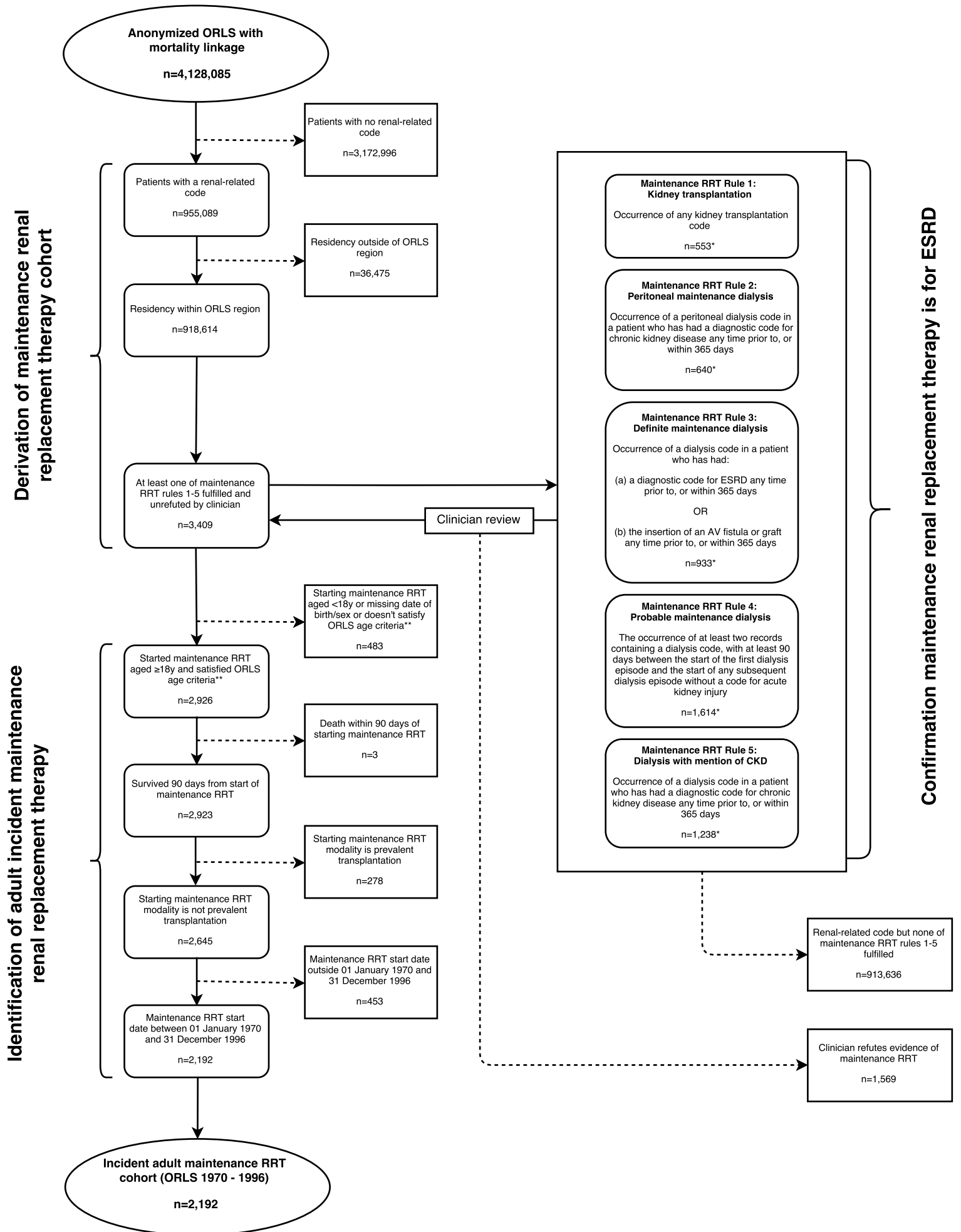


Supplemental figure 6: Treated end-stage renal disease cohort derivation (Oxford Record Linkage Study 1970-1996)



AV = Arteriovenous. CKD = Chronic kidney disease. ESRD = End-stage renal disease. ORLS = Oxford Record Linkage Study. RRT = Renal replacement therapy. (Code) refers to diagnostic or procedural codes. *Participants could fulfill more than one rule, but only the first rule which was fulfilled is counted. **If RRT start date between 1970 - 1974 then age < 60 , if RRT start date between 1975 - 1979 then age < 70 , and if RRT start date between 1980 - 1984 then age < 80 . To ensure reliable derivation of the ORLS cohort, a broad range of diagnostic and procedural codes was used and combined with clinician review of individual patient records.