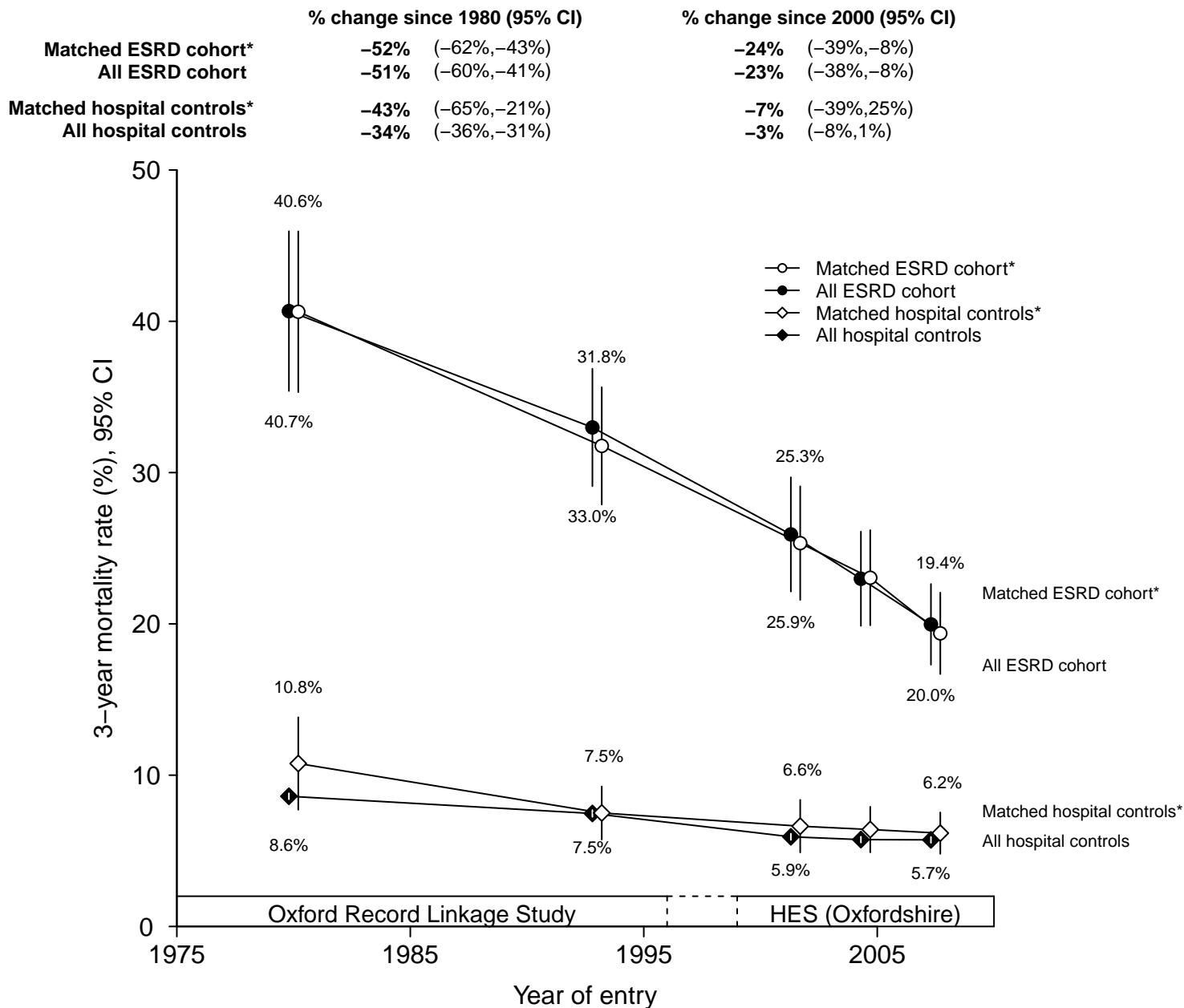


# Supplemental figure 7: Standardized three-year mortality rates in new treated end-stage renal disease patients and general population hospital controls, by year and matching method

## Oxfordshire



Standardized to the age, sex and comorbidity structure of an 'average' 1970–2008 renal replacement therapy population (Supplemental Table 6 for characteristics). Excludes patients dying within 90 days. ESRD = End-stage renal disease. HES = Hospital Episode Statistics. Year of entry is year of starting renal replacement therapy or year of relevant general population hospital controls' admission. Rates plotted at midpoint of each year group. \*Matched by age, sex and comorbidity. 125 ESRD patients for whom a matching hospital control could not be identified were excluded from the analyses.