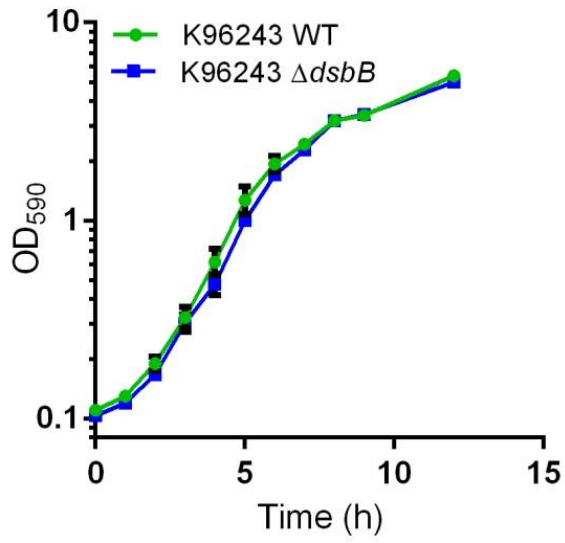
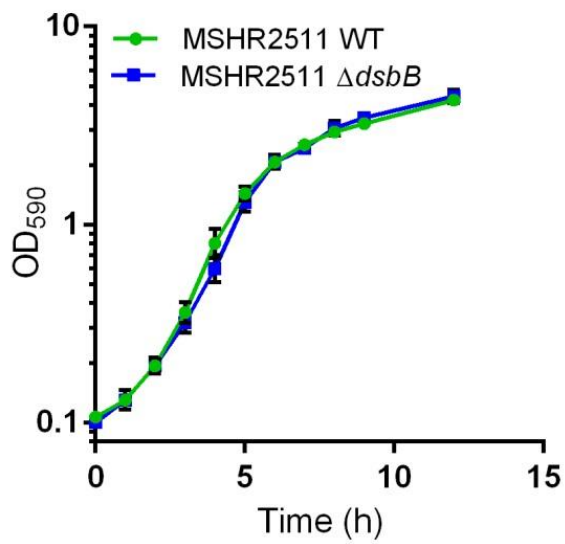


(A)



(B)



(C)

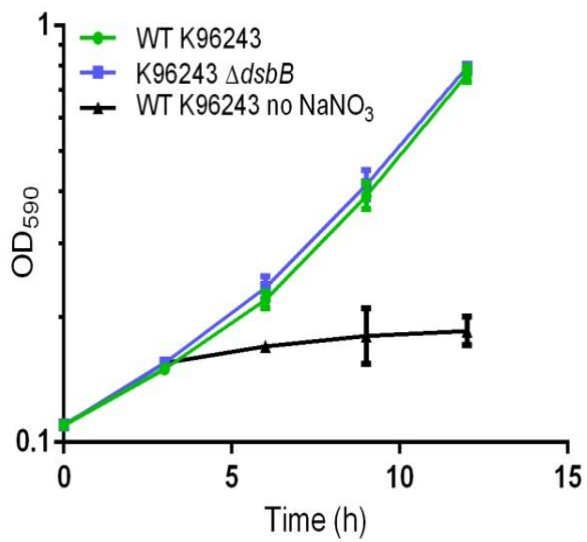


Fig S1. Growth characteristics of *B. pseudomallei* strains grown aerobically (A, B) or (C) anaerobically. No difference in aerobic growth was observed between *B. pseudomallei* WT and $\Delta dsbB$ for strains K96243 or MSHR2511 (P 0.32 and P 0.67 respectively) (N=3). Growth of *B. pseudomallei* in the absence of oxygen not differ over the time course (P 0.18) (N=2) as determined by two way ANOVA. Error bars represent standard error of the mean.