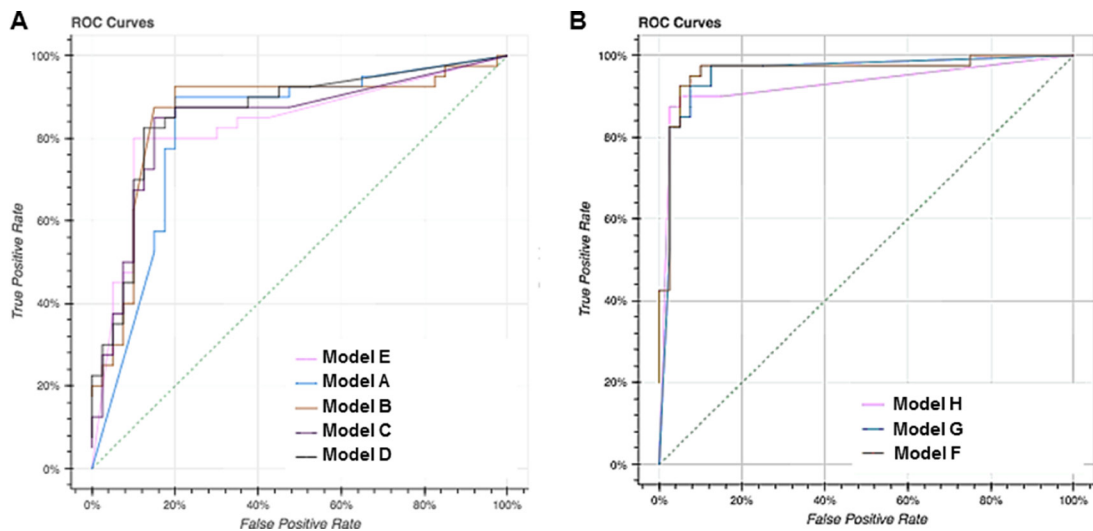


# miRNA-based signatures in cerebrospinal fluid as potential diagnostic tools for early stage Parkinson's disease

## SUPPLEMENTARY MATERIALS



**Supplementary Figure 1: Diagnostic accuracy of potential models.** (A) ROC curve of miRNA-based models with high sensitivity and specificity values - selected Model A (blue line) and supplementary Models B (brown line), C (purple line), D (black line) and E (pink line). (B) ROC curves of selected miRNA+ $\alpha$ -syn Model F (brown line) and supplementary Models G (blue line) and H (pink line).

**Supplementary Table 1: Predictive values of miRNA-based models with sensitivity and specificity values above 80%**

<b>Model</b>	<b>SEN</b>	<b>SPE</b>	<b>AUC</b>	<b>PPV</b>	<b>NPV</b>
A	90.00%	80.00%	82.31%	81.82%	88.89%
B	87.50%	85.00%	85.88%	85.37%	87.18%
C	85.00%	85.00%	84.22%	85.00%	85.00%
D	82.50%	87.50%	86.03%	86.84%	83.33%
E	80.00%	90.00%	82.94%	88.89%	81.82%

Sensitivity (SEN), Specificity (SPE), Area under the curve (AUC), Positive predictive value (PPV) and Negative Predictive Value (NPV).

**Supplementary Table 2: Predictive values of models including miRNAs and  $\alpha$ -syn with sensitivity and specificity values above 90%**

<b>Model</b>	<b>SEN</b>	<b>SPE</b>	<b>AUC</b>	<b>PPV</b>	<b>NPV</b>
F	97.50%	90.00%	96.19%	90.70%	97.30%
G	92.50%	92.50%	95.72%	92.50%	92.50%
H	90.00%	95.00%	92.94%	94.74%	90.48%

Sensitivity (SEN), Specificity (SPE), Area under the curve (AUC), Positive predictive value (PPV) and Negative Predictive Value (NPV).