

Fig. S8

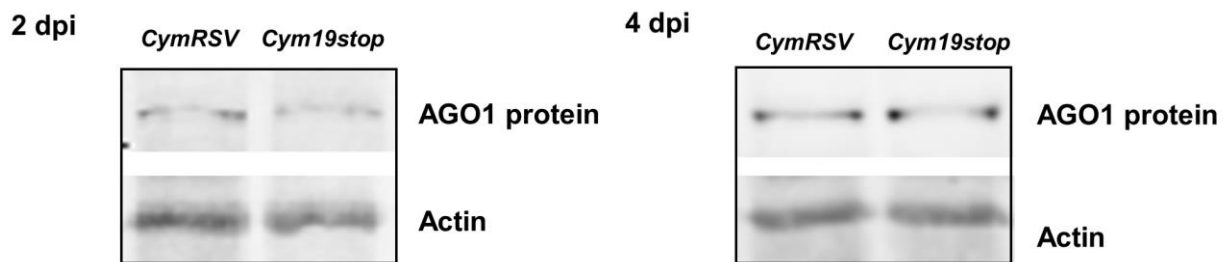


Fig. S8. Western blot analysis of total protein extracts for AGO1 accumulation.

Cym19stop and *CymRSV* inoculated leaves of *Nicotiana benthamiana* were homogenized at 2 and 4 dpi and used for protein extraction. *NbAGO1* protein was detected using a rabbit antibody raised against two N-terminal peptide sequences of the protein. Actin was detected as a loading control. Note that the *NbAGO1* levels do not differ between *CymRSV*- and *Cym19stop*-infected plants.