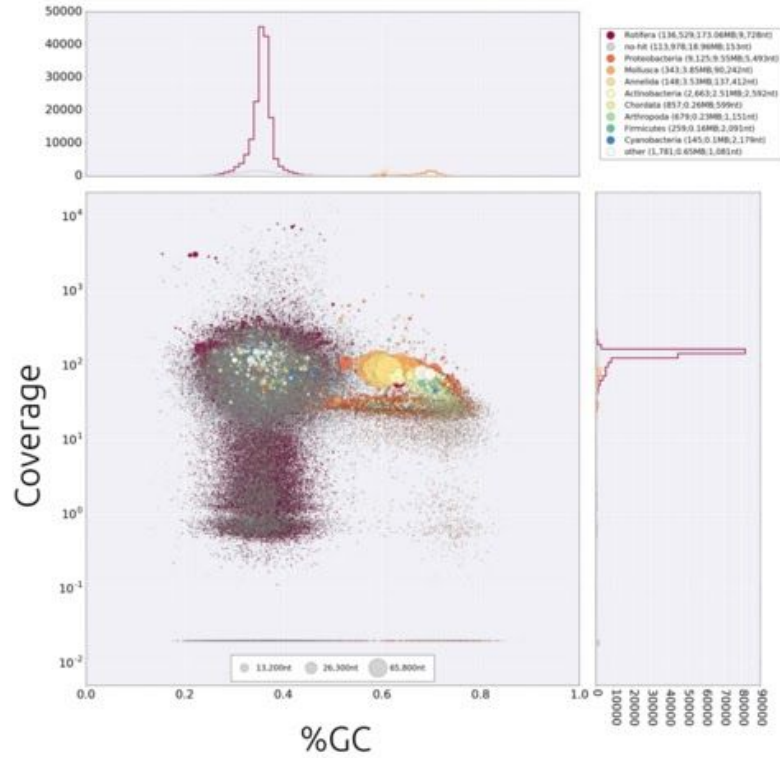
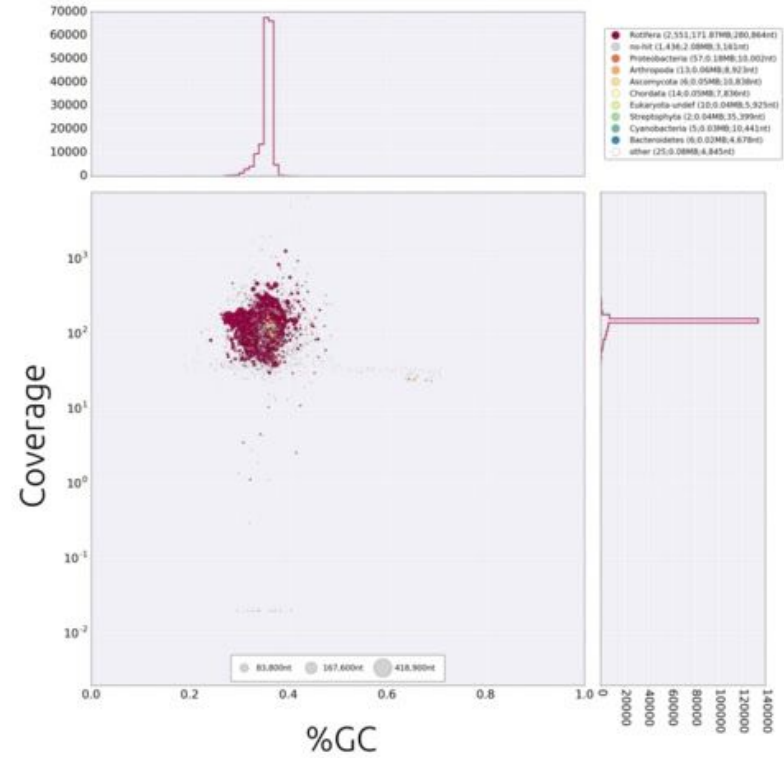


(A)

i. A. ricciae initial assembly

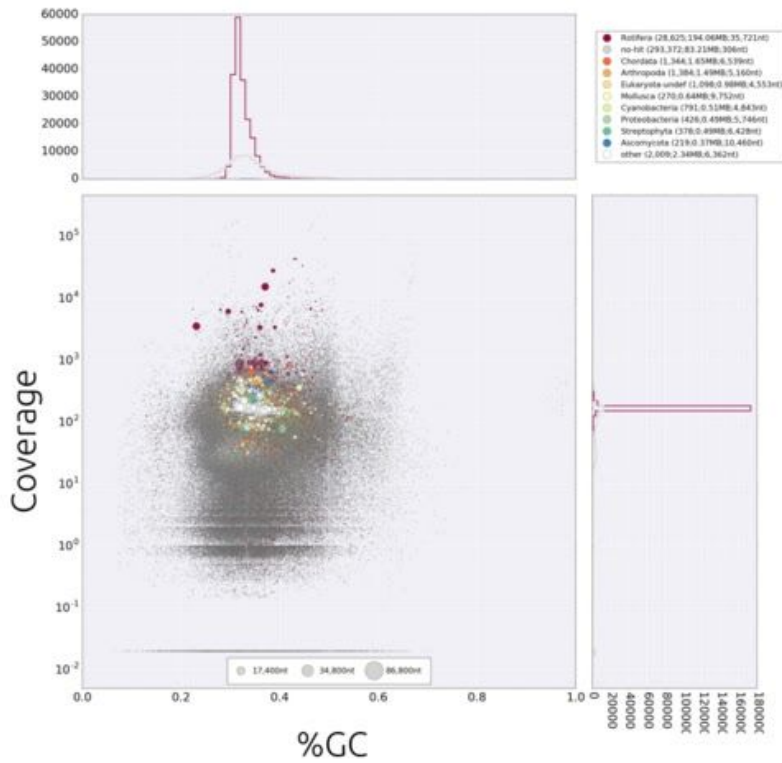


ii. A. ricciae final assembly

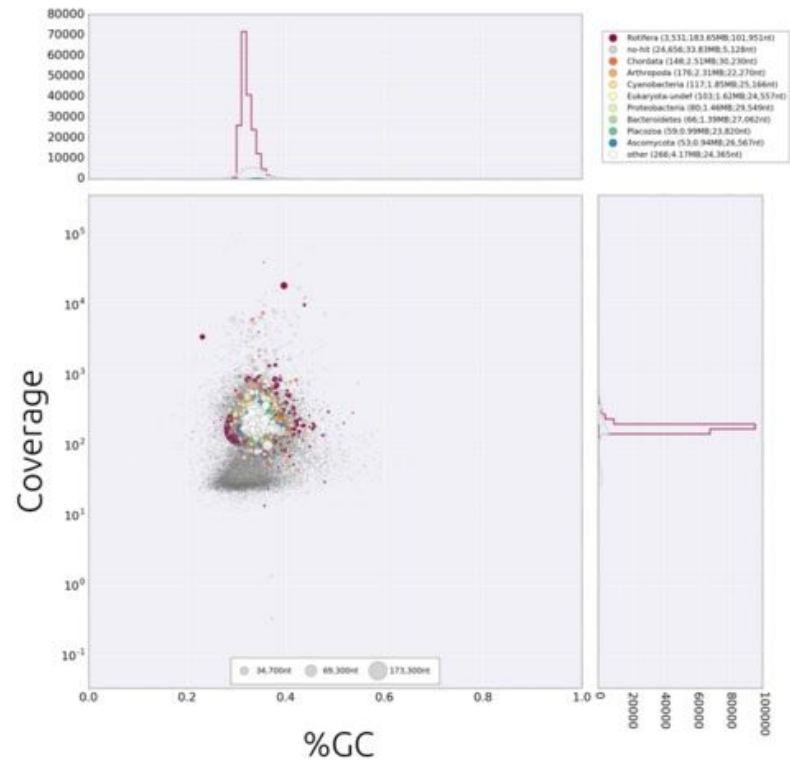


(B)

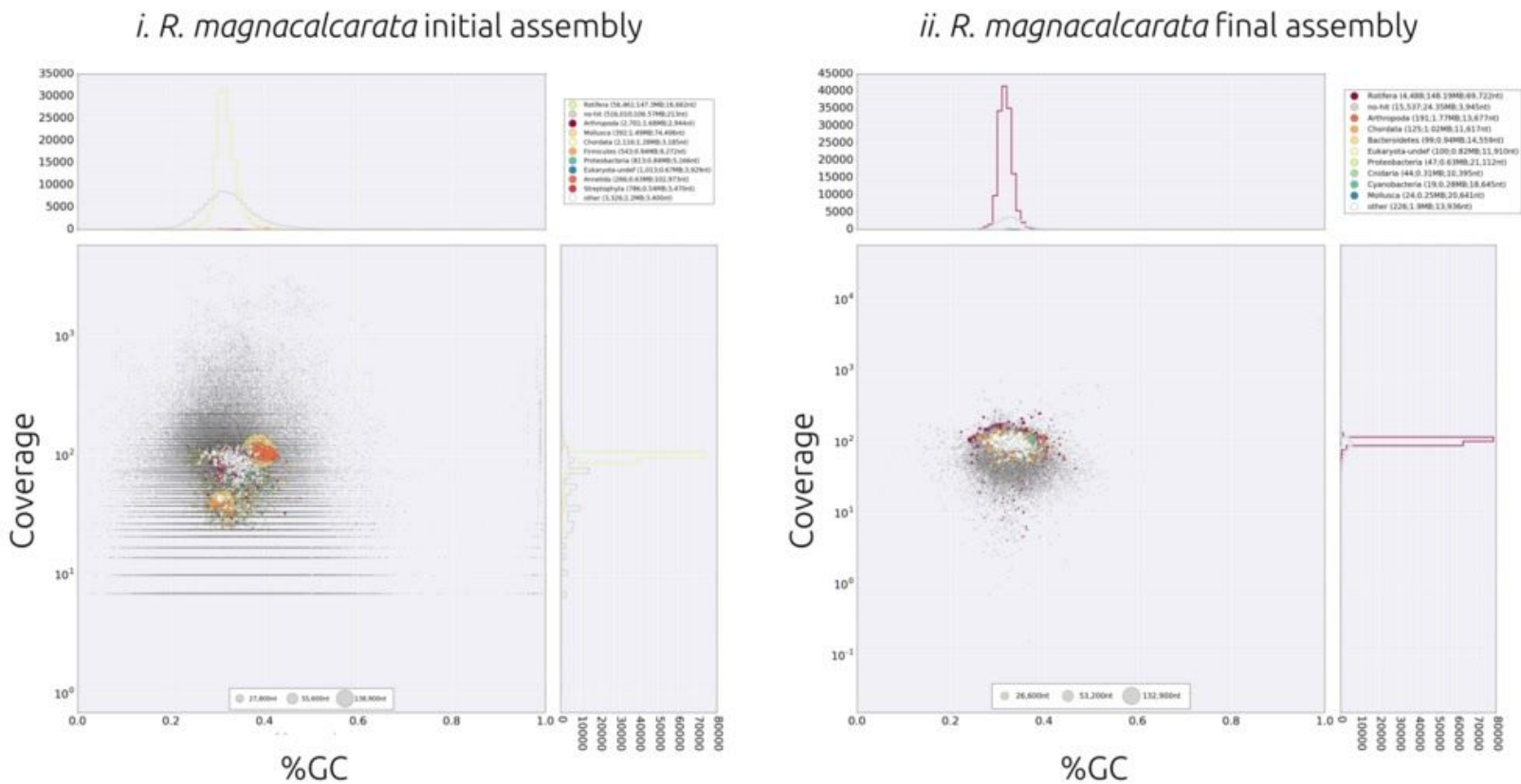
i. R. macrura initial assembly



ii. R. macrura final assembly



(C)



S2 Fig. Taxon-annotated GC-Coverage plots for initial and final assemblies. Initial draft assemblies for each species are shown in (i), final reference assemblies in (ii) for (A) *A. ricciae*, (B) *R. macrura* and (C) *R. magnacalcarata*. In each plot, circles represent assembly scaffolds with diameter proportional to the sequence length, positioned by %GC (X-axis) and average read coverage (Y-axis), and coloured by putative taxon of origin (see legends). Histograms in upper and right panels represent the total span of contigs/scaffolds in a given %GC or coverage bin.