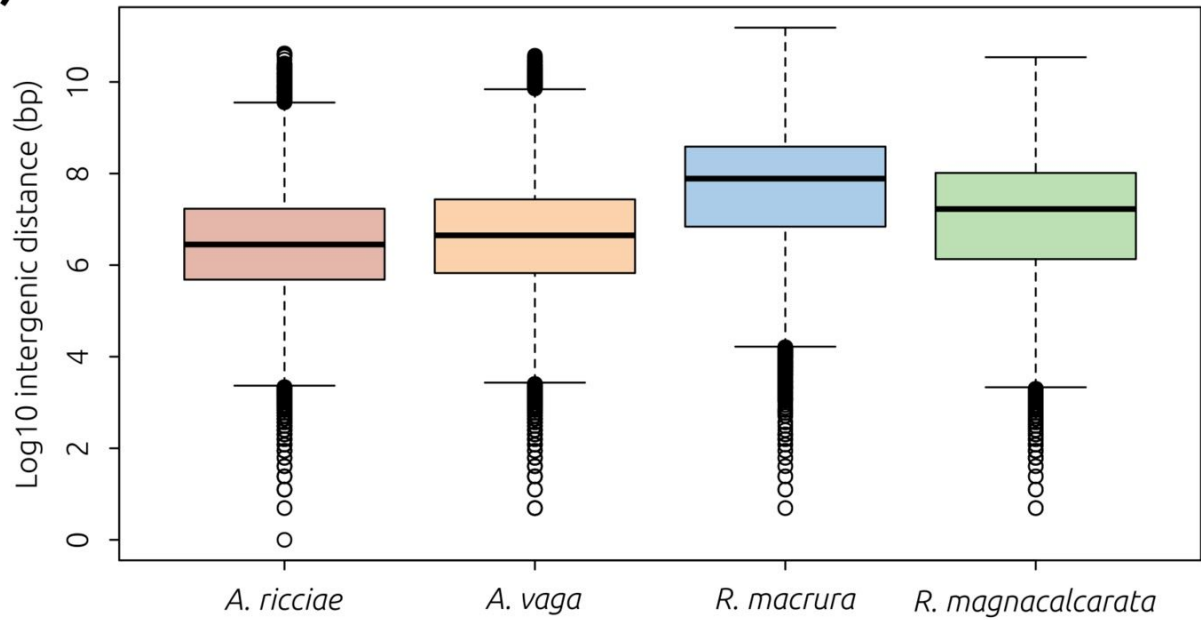
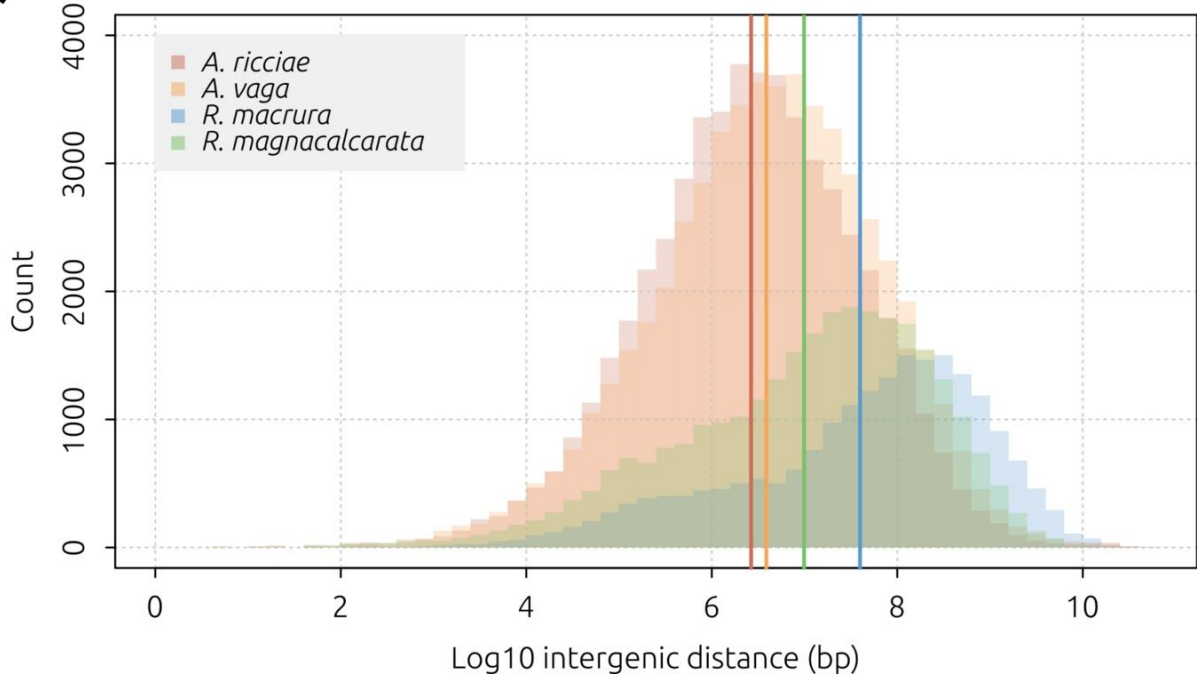


(A)



(B)



S5 Fig. Distribution of intergenic distances between genes. (A) Box-and-whisker plots showing interquartile range for intergenic distances between genes predicted on the same scaffolds in *A. ricciae* (red), *A. vaga* (orange), *R. macrura* (blue) and *R. magnacalcarata* (green). Median values are indicated by

a thick horizontal bar within boxes. Note \log_{10} scale on Y -axis. (B) Overlaid distributions of intergenic distances for all species. Vertical lines indicate mean distances. Note \log_{10} scale on X -axis.