

Epithelium-derived Wnt ligands are essential for maintenance of underlying digit bone.

Authors: Makoto Takeo^{1,2}, Christopher S. Hale¹ and Mayumi Ito^{1,2,*}

Affiliations:

¹ The Ronald O. Perelman Department of Dermatology and ²the Department of Cell Biology
New York University, School of Medicine, New York, NY 10016, USA

* Correspondence to: Mayumi Ito

522 First Ave. SML406

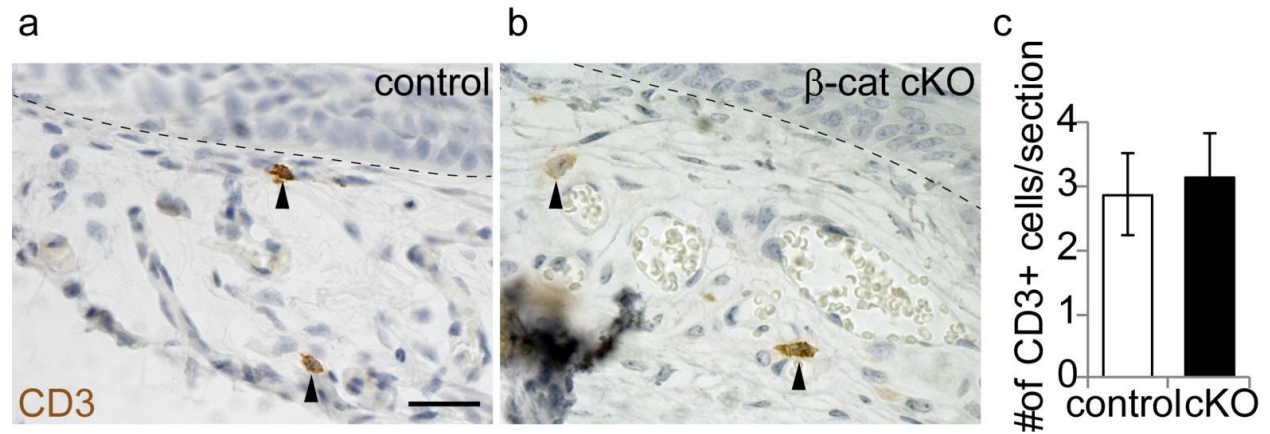
New York, NY 10016, USA

Tel: 1-212-263-9254

Fax: 1-212-263-5819

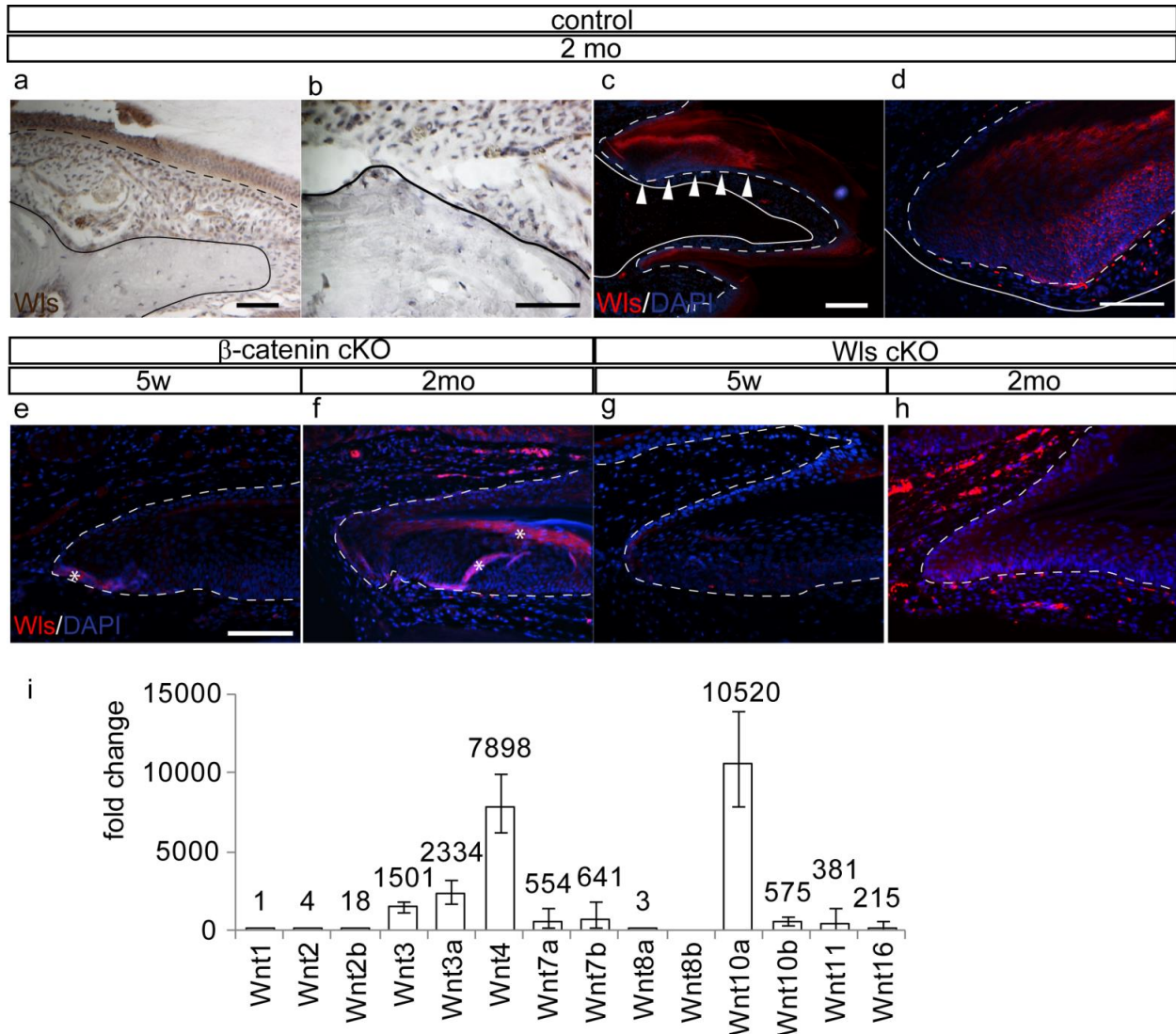
E-mail: mayumi.ito@nyumc.org

SUPPLEMENTARY FIGURES



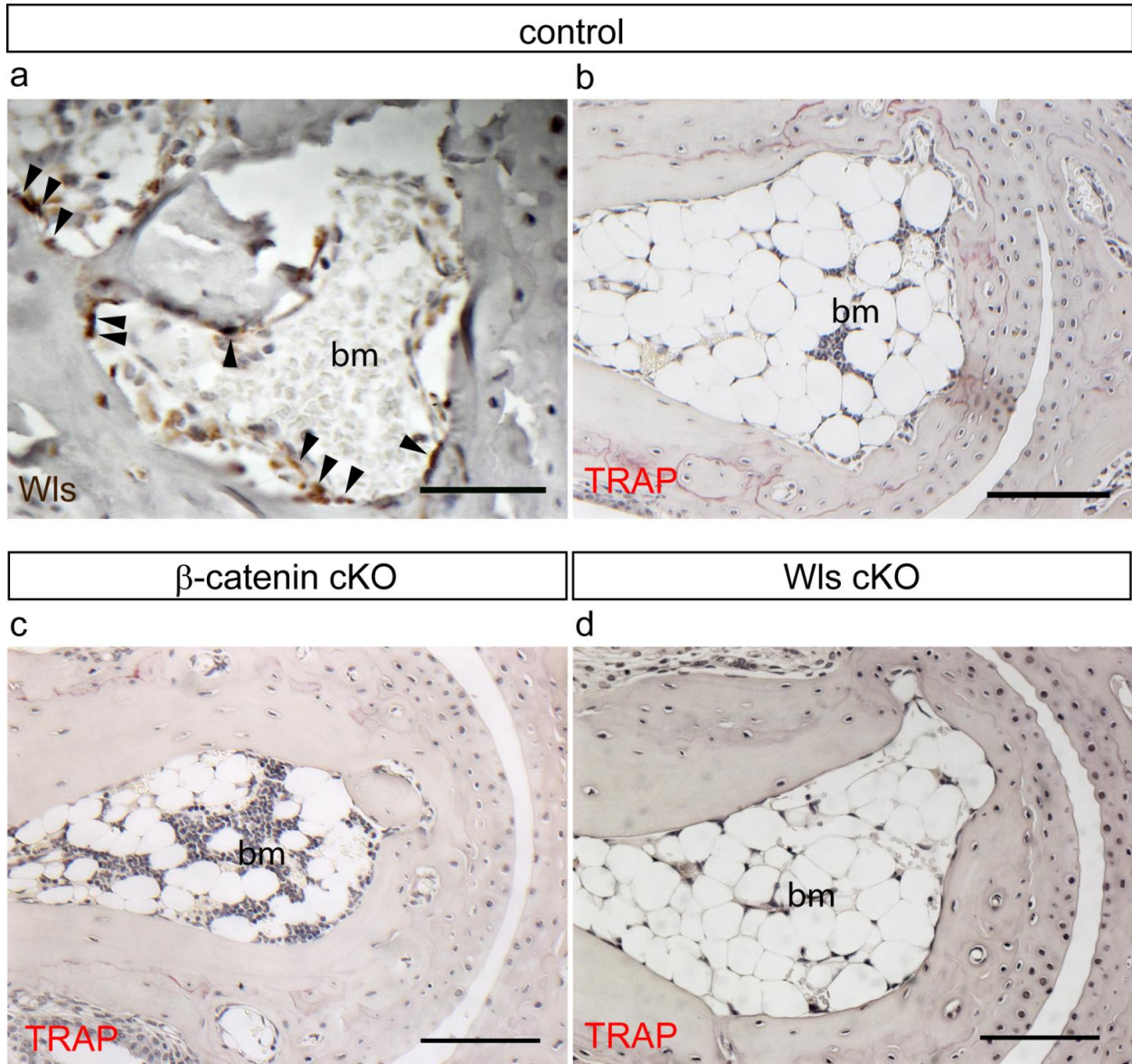
Supplementary Figure 1. Wnt activated cells differentiate into osteoblast.

(a, b) Immunohistochemistry for CD3, a marker of mature T cell, on K14-CreER; β -catenin cKO and control intact digit. Arrowheads indicate CD3 positive cells. (c) Quantification of CD3 positive cells. Dashed line indicates the border between nail epithelium and dermis. Data are presented as the mean \pm SD. Scale bar, 100 μ m.



Supplementary Figure. 2. Expression analysis of Wls and Wnt ligand.

(a – h) Immunohistochemistry for Wls on control (a - d), β-catenin cKO (e and f) and Wls cKO mice (g and h) at 5 weeks (e and g) and 2 month (a-d, f and h) after tamoxifen treatment. (i) Gene expression analysis of Wnt ligands using isolated nail epithelium of 8-weeks old wild type mice. Arrowheads indicate Wls expressing area. Lines indicate border between terminal phalanx and dermis. Asterisks indicate nonspecific background. Dashed lines indicate border between epithelium and dermis. Data is presented as the mean ± SD (n=9). Scale bars, 100 μm in (a, d, and e-f); 50 μm in (b); 500 μm in (c).



Supplementary Figure 3 Loss of β -catenin or Wls in nail epithelium does not affect osteoclast activity in the middle phalanx.

(a) Immunohistochemistry for Wls on middle phalanx of 8-week old wildtype digit. (b – d) TRAP staining on middle phalanx of control (b), β -catenin cKO (c), and Wls cKO (d) mice at 2 month after tamoxifen treatment starting from 3 weeks old. Arrowheads indicate Wls positive cells. bm, bone marrow. Scale bars, 50 μ m in (a); 100 μ m in (b - c).

SUPPLEMENTALY TABLE

Supplementaly teble 1. List of differentially regulated genes.

Transcripts Cluster Id	Fold change	Gene Symbol	Gene description
10570621	69.11	Defb3	defensin beta 3
10493879	50.55	Sprr2i	small proline-rich protein 2I
10563597	48.02	Saa3	serum amyloid A 3
10493867	46.79	Sprr2e	small proline-rich protein 2E
10553274	42.04	Saa2	serum amyloid A 2
10493831	33.15	S100a8	S100 calcium binding protein A8 (calgranulin A)
10499861	29.73	S100a9	S100 calcium binding protein A9 (calgranulin B)
10563611	28.12	Saa1 Saa2	serum amyloid A 1 serum amyloid A 2
10499948	26.16	Lce3a	late cornified envelope 3A
10522827	23.16	Csn1s1	casein alpha s1
10493870	22.49	Sprr2f	small proline-rich protein 2F
10493873	19.95	Sprr2g	small proline-rich protein 2G
10349968	17.96	Chi3l1	chitinase 3-like 1
10357077	17.30	Serpib3d	serine (or cysteine) peptidase inhibitor, clade B (ovalbumin), member 3D
10481627	17.09	Lcn2	lipocalin 2
10593015	16.00	Cd3g	CD3 antigen, gamma polypeptide
10357090	14.35	Serpib3c	serine (or cysteine) peptidase inhibitor, clade B, member 3C
10493896	13.46	Lce3b	late cornified envelope 3B
10493864	13.26	Sprr2d	small proline-rich protein 2D
10389639	11.72	Lpo	lactoperoxidase
10496825	11.22	Uox	urate oxidase
10435504	10.66	Gm5416	predicted gene 5416
10435497	10.51	Stfa2l1	stefin A2 like 1
10493882	10.49	Sprr2j-ps	small proline-rich protein 2J, pseudogene
10365926	10.41	4732465J04Rik	RIKEN cDNA 4732465J04 gene
10531009	10.13	Tmprss11bnl	transmembrane protease, serine 11b N terminal like
10523701	9.78	Ibsp	integrin binding sialoprotein
10570610	9.12	Defb4	defensin beta 4
10407940	9.05	Naip3 Tcrg-V2 Tcrg-V1	NLR family, apoptosis inhibitory protein 3 T-cell receptor gamma, variable 2 T-cell receptor gamma, variable 1
10432886	8.40	Krt4	keratin 4
10592044	8.14	Tmem45b	transmembrane protein 45b
10604984	8.11	Xlr4b Xlr4a Xlr4c	X-linked lymphocyte-regulated 4B X-linked lymphocyte-regulated 4A X-linked lymphocyte-regulated 4C
10600131	8.11	Xlr4b Xlr4c Xlr4a	X-linked lymphocyte-regulated 4B X-linked lymphocyte-regulated 4C X-linked lymphocyte-regulated 4A
10605034	8.11	Xlr4c Xlr4b Xlr4a	X-linked lymphocyte-regulated 4C X-linked lymphocyte-regulated 4B X-linked lymphocyte-regulated 4A
10478633	8.06	Mmp9	matrix metalloproteinase 9
10489463	7.92	Slpi	secretory leukocyte peptidase inhibitor
10351206	7.62	Selp	selectin, platelet

Transcripts Cluster Id	Fold change	Gene Symbol	Gene description
10379727	7.57	Gm11428	predicted gene 11428
10598976	7.53	Timp1	tissue inhibitor of metalloproteinase 1
10403420	7.44	Idi2	isopentenyl-diphosphate delta isomerase 2
10511779	7.20	Atp6v0d2	ATPase, H+ transporting, lysosomal V0 subunit D2
10530986	6.96	9930032O22Rik	RIKEN cDNA 9930032O22 gene
10466200	6.77	Ms4a7	membrane-spanning 4-domains, subfamily A, member 7
10497381	6.76	Cyp7b1	cytochrome P450, family 7, subfamily b, polypeptide 1
10583044	6.65	Mmp13	matrix metalloproteinase 13
10439296	6.58	Stfa2	stefin A2
10403821	6.22	Tcrg-V3 Tcrg-V2	T-cell receptor gamma, variable 3 T-cell receptor gamma, variable 2
10608138	6.08	Ddx3y	DEAD (Asp-Glu-Ala-Asp) box polypeptide 3, Y-linked
10523120	5.93	Cxcl5	chemokine (C-X-C motif) ligand 5
10569011	5.83	Ifitm5	interferon induced transmembrane protein 5
10523182	5.67	Areg	amphiregulin
10452316	5.66	C3	complement component 3
10608001	5.55	Eif2s3y	eukaryotic translation initiation factor 2, subunit 3, structural gene Y-linked
10493905	5.53		
10444016	5.31	Pram1	PML-RAR alpha-regulated adaptor molecule 1
10397645	5.20	Gpr65	G-protein coupled receptor 65
10439292	5.07	BC100550 Sua1 BC117000	cDNA sequence BC100550 Sema1 A1 cDNA sequence BC117000
10439289	5.03	BC117090	cDNA sequence BC117090
10498345	5.01	Gpr171	G protein-coupled receptor 171
10399820	4.98	Acp1	acid phosphatase 1, soluble
10357072	4.97	Serpina3a	serine (or cysteine) peptidase inhibitor, clade B (ovalbumin), member 3A
10487597	4.96	Il1b	interleukin 1 beta
10607972	4.92	Nu1050 LOC100040412	lysine (K)-specific demethylase 5D similar to jumonji, A1 rich interactive domain 1D (Pka2 like)
10493903	4.92	Lce3c Lce3f Lce3b	late cornified envelope 3C late cornified envelope 3F late cornified envelope 3B
10493907	4.91	Lce3f	late cornified envelope 3F
10588043	4.82	Rbp2	retinol binding protein 2, cellular
10451953	4.74	Lrg1	leucine-rich alpha-2-glycoprotein 1
10407537	4.71	Idi2	isopentenyl-diphosphate delta isomerase 2
10608107	4.68	Uty	ubiquitously transcribed tetratricopeptide repeat gene, Y chromosome
10494262	4.68	Ctsk	cathepsin K
10402575	4.58	Degs2	degenerative spermatocyte homolog 2 (Drosophila), lipid desaturase
10552475	4.56	Klk12	kallikrein related-peptidase 12
10493886	4.51	Sprr2k	small proline-rich protein 2K
10493856	4.42	Sprr2a1 Sprr2a3	small proline-rich protein 2A1 small proline-rich protein 2A3
10493858	4.42	Sprr2a1 Sprr2a3	small proline-rich protein 2A1 small proline-rich protein 2A3
10435501	4.35	Stfa1	stefin A1

Transcripts Cluster Id	Fold change	Gene Symbol	Gene description
10346448	4.34	Aox4	aldehyde oxidase 4
10423836	4.30	Cthrc1	collagen triple helix repeat containing 1
10523156	4.27	Cxcl2	chemokine (C-X-C motif) ligand 2
10606016	4.22	Il2rg	interleukin 2 receptor, gamma chain
10387257	4.19	Alox8	arachidonate 8-lipoxygenase
10495449	4.16	Col11a1	collagen, type XI, alpha 1
10414993	4.10	A630038E17Rik	RIKEN cDNA A630038E17 gene
10380419	4.03	Col1a1	collagen, type I, alpha 1
10368343	3.98	Arg1	arginase, liver
10530960	3.98	Tmprss11d	transmembrane protease, serine 11d
10439936	4.14	Nfkbiz	nuclear factor of kappa light polypeptide gene enhancer in B-cells inhibitor, zeta
10486425	4.12	Pla2g4d	phospholipase A2, group IVD
10530974	3.95	Tmprss11a	transmembrane protease, serine 11a
10560685	3.95	Bcl3	B-cell leukemia/lymphoma 3
10588037	3.90	Rbp1	retinol binding protein 1, cellular
10546240	3.87	Vmn1r49	vomer nasal 1, receptor 49
10346799	3.85	Icos	inducible T-cell co-stimulator
10540880	3.83	Syn2	synapsin II
10525173	3.79	Oas1h	2'-5' oligoadenylate synthetase 1H
10497349	3.75	Sirpb1a Sirpb1b LO C100038947 LOC6 30976	signal-regulatory protein beta 1A signal-regulatory protein beta 1B signal-regulatory protein beta 1-like similar to SIRP beta 1 isoform 3
10353415	3.74	Il17f	interleukin 17F
10518300	3.71	Tnfrsf1b	tumor necrosis factor receptor superfamily, member 1b
10462442	3.67	Il33	interleukin 33
10402473	3.65	Clmn	calmin
10493979	3.63	Rptn	repetin
10461721	3.61	Mpeg1	macrophage expressed gene 1
10549041	3.55	Slco1a5	solute carrier organic anion transporter family, member 1a5
10461614	3.54	Ms4a6c	membrane-spanning 4-domains, subfamily A, member 6C
10486681	3.53	Tgm5	transglutaminase 5
10587690	3.52	Bcl2a1b Bcl2a1d Bc l2a1a	B-cell leukemia/lymphoma 2 related protein A1b B-cell leukemia/lymphoma 2 related protein A1d B-cell leukemia/lymphoma 2 related protein A1a
10414590	3.51	Ear6 Ear7	eosinophil-associated, ribonuclease A family, member 6 eosinophil- associated, ribonuclease A family, member 7
10516266	3.50	Zc3h12a	zinc finger CCCH type containing 12A
10497364	3.50	Sirpb1b Sirpb1a LO C100038947 LOC6 41195	signal-regulatory protein beta 1B signal-regulatory protein beta 1A signal-regulatory protein beta 1-like similar to SIRP beta 1 isoform 1
10354309	3.49	Col5a2	collagen, type V, alpha 2
10428943	3.48	Gsdmc	gasdermin C
10358547	3.48	Hmcn1	hemicentin 1

Transcripts Cluster Id	Fold change	Gene Symbol	Gene description
10419154	3.46	Ear1 Ear10 Ear2 Ear12 Ear3	eosinophil-associated, ribonuclease A family, member 1 eosinophil-associated, ribonuclease A family, member 10 eosinophil-associated, ribonuclease A family, member 2 eosinophil-associated, ribonuclease A family, member 12 eosinophil-associated, ribonuclease A family, member 3
10357570	3.46	Il19	interleukin 19
10372094	3.45		
10466521	3.43	Gcnt1	glucosaminyl (N-acetyl) transferase 1, core 2
10357472	3.42	Cxcr4	chemokine (C-X-C motif) receptor 4
10351182	3.42	Sele	selectin, endothelial cell
10574139	3.42	Nlrc5	NLR family, CARD domain containing 5
10403996	3.41	Vmn1r200	vomer nasal 1 receptor 200
10530145	3.41	Tlr1	toll-like receptor 1
10598175	3.37	Ear10 Ear2 Ear12 Ear3	eosinophil-associated, ribonuclease A family, member 10 eosinophil-associated, ribonuclease A family, member 2 eosinophil-associated, ribonuclease A family, member 1 eosinophil-associated, ribonuclease A family, member 12 eosinophil-associated, ribonuclease A family, member 3
10568668	3.36	Adam12	a disintegrin and metallopeptidase domain 12 (meltrin alpha)
10385323	3.35	Mir146	microRNA 146
10419156	3.33	Ear10 Ear2 Ear12 Ear3	eosinophil-associated, ribonuclease A family, member 10 eosinophil-associated, ribonuclease A family, member 2 eosinophil-associated, ribonuclease A family, member 1 eosinophil-associated, ribonuclease A family, member 12 eosinophil-associated, ribonuclease A family, member 3
10358879	3.30	Npl	N-acetylneuraminase pyruvate lyase
10462313	3.29	Slc1a1	solute carrier family 1 (neuronal/epithelial high affinity glutamate transporter, system Xag), member 1
10536220	3.28	Col1a2	collagen, type I, alpha 2
10595633	3.27	Bcl2a1d Bcl2a1a Bcl2a1b Bcl2a1c	B-cell leukemia/lymphoma 2 related protein A1d B-cell leukemia/lymphoma 2 related protein A1a B-cell leukemia/lymphoma 2 related protein A1b B-cell leukemia/lymphoma 2 related protein A1c
10587683	3.27	Bcl2a1a Bcl2a1d Bcl2a1b Bcl2a1c	B-cell leukemia/lymphoma 2 related protein A1a B-cell leukemia/lymphoma 2 related protein A1d B-cell leukemia/lymphoma 2 related protein A1b B-cell leukemia/lymphoma 2 related protein A1c
10367400	3.24	Mmp19	matrix metallopeptidase 19
10493834	3.23	Pglyrp4	peptidoglycan recognition protein 4
10358565	3.23	Hmcn1	hemicentin 1
10571467	3.23	Pdgfrl Gm9868	platelet-derived growth factor receptor-like predicted gene 9868
10476301	3.22	Smox	spermine oxidase
10541614	3.21	Clec4d	C-type lectin domain family 4, member d
10581605	3.21	Hp	haptoglobin

Transcripts Cluster Id	Fold change	Gene Symbol	Gene description
10515986	3.19	Zfp69	zinc finger protein 69
10497258	3.19	Fabp9	fatty acid binding protein 9, testis
10469793	3.19	Il1f6	interleukin 1 family, member 6
10587792	3.16	Plscr1	phospholipid scramblase 1
10374083	3.16	Aebp1	AE binding protein 1
10541605	3.15	Clec4n	C-type lectin domain family 4, member n
10598013	3.15	Ccr5 Ccr2	chemokine (C-C motif) receptor 5 chemokine (C-C motif) receptor 2
10478525	3.15	Wfdc2	WAP four-disulfide core domain 2
10590635	3.15	Ccr5 Ccr2	chemokine (C-C motif) receptor 5 chemokine (C-C motif) receptor 2
10426467	3.15	Tmem117	transmembrane protein 117
10584821	3.13	Cd3d	CD3 antigen, delta polypeptide
10442381	3.12	Prss27	protease, serine, 27
10587616	3.11	Prss35	protease, serine, 35
10416437	3.10	Lcp1	lymphocyte cytosolic protein 1
10419034	3.09	2610528A11Rik	RIKEN cDNA 2610528A11 gene
10590631	3.09	Ccr2	chemokine (C-C motif) receptor 2
10449452	3.06	Fkbp5	FK506 binding protein 5
10591123	3.05	Fat3	FAT tumor suppressor homolog 3 (Drosophila)
10490923	3.05	Car2	carbonic anhydrase 2
10466210	3.05	Ms4a6d	membrane-spanning 4-domains, subfamily A, member 6D
10358529	3.05	Hmcn1	hemicentin 1
10607499	3.04	Phex	phosphate regulating gene with homologies to endopeptidases on the X chromosome (hypophosphatemia, vitamin D resistant rickets)
10403816	3.04		
10578322	3.04	Pdgfrl Gm9868	platelet-derived growth factor receptor-like predicted gene 9868
10459071	3.03	2010002N04Rik	RIKEN cDNA 2010002N04 gene
10473312	3.03	Fam171b	family with sequence similarity 171, member B
10434698	3.02	Fetub	fetuin beta
10552516	3.02	Klk6	kallikrein related-peptidase 6
10439299	3.00	Stfa3	stefin A3
10438822	2.99	Atp13a5	ATPase type 13A5
10548326	2.99	Clec2e	C-type lectin domain family 2, member e
10574163	2.98	Nlrc5	NLR family, CARD domain containing 5
10396148	2.98	Abhd12b	abhydrolase domain containing 12B
10433003	2.98	Sp7	
10440120	2.97	Gm813	predicted gene 813
10358527	2.97	Hmcn1	hemicentin 1
10576216	2.96	Snord68 Rpl13	small nucleolar RNA, C/D box 68 ribosomal protein L13
10349129	2.95	Serpinb13	serine (or cysteine) peptidase inhibitor, clade B (ovalbumin), member 13
10440643	2.95	Cldn17	claudin 17

Transcripts Cluster Id	Fold change	Gene Symbol	Gene description
10389590	2.92	Gdpd1	glycerophosphodiester phosphodiesterase domain containing 1
10588582	2.91	6430571L13Rik	RIKEN cDNA 6430571L13 gene
10345791	2.89	Il1rl1	interleukin 1 receptor-like 1
10434689	2.88	Ahsg	alpha-2-HS-glycoprotein
10570606	2.86	Defb14	defensin beta 14
10592266	2.85	Slc37a2	solute carrier family 37 (glycerol-3-phosphate transporter), member 2
10521038	2.85	Slc5a1	solute carrier family 5 (sodium/glucose cotransporter), member 1
10395103	2.83	Pxdn	peroxidasin homolog (Drosophila)
10539244	2.81	Tacr1	tachykinin receptor 1
10358635	2.80	Hmcn1	hemicentin 1
10455901	2.80	Slc27a6	solute carrier family 27 (fatty acid transporter), member 6
10473444	2.79	Aplnr	apelin receptor
10548665	2.77	Tas2r115	taste receptor, type 2, member 115
10358224	2.76	Ptprc	protein tyrosine phosphatase, receptor type, C
10429534	2.76	Gml	GPI anchored molecule like protein
10547030	2.76	2510049J12Rik	RIKEN cDNA 2510049J12 gene
10402422	2.76	Serpina9	serine (or cysteine) peptidase inhibitor, clade A (alpha-1 antiproteinase, antitrypsin), member 9
10370210	2.75	Col6a1	collagen, type VI, alpha 1
10356520	2.75	Col6a3	collagen, type VI, alpha 3
10390640	2.74	Ikzf3	IKAROS family zinc finger 3
10585381	2.71	Slc35f2	solute carrier family 35, member F2
10474361	2.70	Mpped2	metallophosphoesterase domain containing 2
10379731	2.70	Expi	extracellular proteinase inhibitor
10589958	2.70	Gm9487	glyceraldehyde-3-phosphate dehydrogenase pseudogene
10544885	2.67	Fkbp14	FK506 binding protein 14
10461622	2.66	Ms4a6b	membrane-spanning 4-domains, subfamily A, member 6B
10517587	2.66	Alpl	alkaline phosphatase, liver/bone/kidney
10346015	2.65	Col3a1	collagen, type III, alpha 1
10485445	2.64	Ehf	ets homologous factor
10493900	2.64	Lce3c	late cornified envelope 3C
10414551	2.64	Ear5	eosinophil-associated, ribonuclease A family, member 5
10408557	2.63	Serpina1a	serine (or cysteine) peptidase inhibitor, clade B, member 1a
10508663	2.63	Laptn5	lysosomal-associated protein transmembrane 5
10385995	2.62	Ccdc69	coiled-coil domain containing 69
10358619	2.62	Hmcn1	hemicentin 1
10486403	2.62	Pla2g4e	phospholipase A2, group IVE
10358670	2.61	Hmcn1	hemicentin 1
10391061	2.59	Krt16	keratin 16
10400304	2.59	Egn3	EGL nine homolog 3 (C. elegans)
10420724	2.58	Defb30	defensin beta 30
10489391	2.57	Ada	adenosine deaminase

Transcripts Cluster Id	Fold change	Gene Symbol	Gene description
10388160	2.56	Slc13a5	solute carrier family 13 (sodium-dependent citrate transporter), member 5
10428376	2.56	Angpt1	angiopoietin 1
10472538	2.56	Dhrs9	dehydrogenase/reductase (SDR family) member 9
10446656	2.56	Lpin2	lipin 2
10570754	2.55	Defb35	defensin beta 35
10590623	2.55	Cxcr6	chemokine (C-X-C motif) receptor 6
10583071	2.55	Mmp3	matrix metalloproteinase 3
10570955	2.54	Golga7 4930518F22 Rik	golgi autoantigen, golgin subfamily a, 7 RIKEN cDNA 4930518F22 gene
10539967	2.54	Vmn1r50	vomer nasal 1 receptor 50
10432756	2.53	Gm5414 Gm5476	predicted gene 5414 type II keratin Kb17P pseudogene
10358668	2.53	Hmcn1	hemicentin 1
10391504	2.53	Meox1	mesenchyme homeobox 1
10462539	2.51	Nudt15	nudix (nucleoside diphosphate linked moiety X)-type motif 15
10472195	2.51	Nudt15	nudix (nucleoside diphosphate linked moiety X)-type motif 15
10452815	2.50	Xdh	xanthine dehydrogenase
10432767	2.50	Gm5478	predicted pseudogene 5478
10374529	2.50	AV249152	
10514185	2.49		
10427628	2.49	Il7r	interleukin 7 receptor
10577190	2.48	Rasa3	RAS p21 protein activator 3
10346150	2.48	Tmeff2	transmembrane protein with EGF-like and two follistatin-like domains 2
10369479	2.48	Lrrc20 D830039M1 4Rik	leucine rich repeat containing 20 RIKEN cDNA D830039M14 gene
10432774	2.47	Krt6b	keratin 6B
10358662	2.47	Hmcn1	hemicentin 1
10605571	2.47	Gyk	glycerol kinase
10475517	2.46	AA467197 Mir147	expressed sequence AA467197 microRNA 147
10457686	2.45	Dsc2	desmocollin 2
10442493	2.45		
10511803	2.45	2610029I01Rik	RIKEN cDNA 2610029I01 gene
10584841	2.44	Amica1	adhesion molecule, interacts with CXADR antigen 1
10578448	2.44	Cyp4v3 Klkb1	cytochrome P450, family 4, subfamily v, polypeptide 3 kallikrein B, plasma 1
10547657	2.43	C3ar1	complement component 3a receptor 1
10350516	2.42	Ptgs2	prostaglandin-endoperoxide synthase 2
10468988	2.41		
10430344	2.41	Il2rb	interleukin 2 receptor, beta chain
10372648	2.40	Lyz2	lysozyme 2
10497356	2.40	Sirpb1a Sirpb1b LO C100038947	signal-regulatory protein beta 1A signal-regulatory protein beta 1B signal-regulatory protein beta 1-like
10466190	2.40	Ms4a14	membrane-spanning 4-domains, subfamily A, member 14
10582997	2.40	Casp4	caspase 4, apoptosis-related cysteine peptidase

Transcripts Cluster Id	Fold change	Gene Symbol	Gene description
10461856	2.40	Gna14	guanine nucleotide binding protein, alpha 14
10425287	2.40	Kdelr3	KDEL (Lys-Asp-Glu-Leu) endoplasmic reticulum protein retention receptor 3
10510687	2.39	Acot7	acyl-CoA thioesterase 7
10391444	2.39	Rundc1 1700113I22 Rik	RUN domain containing 1 RIKEN cDNA 1700113I22 gene
10407276	2.38	Mir449a	microRNA 449a
10398075	2.38	Serpina3n	serine (or cysteine) peptidase inhibitor, clade A, member 3N
10552469	2.38	Klk13	kallikrein related-peptidase 13
10423109	2.37	Adamts12	a disintegrin-like and metallopeptidase (repolysin type) with thrombospondin type 1 motif, 12
10591120	2.37	Fat3	FAT tumor suppressor homolog 3 (Drosophila)
10543239	2.36	Tefec	transcription factor EC
10489434	2.36	Wfdc12	WAP four-disulfide core domain 12
10448409	2.36	Prss22	protease, serine, 22
10398665	2.36	Tnfaip2	tumor necrosis factor, alpha-induced protein 2
10554789	2.35	Ctsc	cathepsin C
10490989	2.35	Cp	ceruloplasmin
10423080	2.35	C1qtnf3	C1q and tumor necrosis factor related protein 3
10358664	2.35	Hmcn1	hemicentin 1
10583920	2.35	Eepd1	endonuclease/exonuclease/phosphatase family domain containing 1
10495854	2.35	Prss12	protease, serine, 12 neurotrypsin (motopsin)
10432243	2.34	Fkbp11	FK506 binding protein 11
10374333	2.34	Ikzf1	IKAROS family zinc finger 1
10363082	2.34	Lilrb4	leukocyte immunoglobulin-like receptor, subfamily B, member 4
10358571	2.34	Hmcn1	hemicentin 1
10370180	2.33	Col6a2	collagen, type VI, alpha 2
10555323	2.32	P4ha3	procollagen-proline, 2-oxoglutarate 4-dioxygenase (proline 4-hydroxylase), alpha polypeptide III
10596454	2.31	Alas1	aminolevulinic acid synthase 1
10357084	2.31	Serpina3b	serine (or cysteine) peptidase inhibitor, clade B (ovalbumin), member 3B
10545135	2.31	Il12rb2	interleukin 12 receptor, beta 2
10497265	2.30	Fabp4	fatty acid binding protein 4, adipocyte
10457644	2.30	Cdh2	cadherin 2
10565958	2.30	P2ry6	pyrimidinergic receptor P2Y, G-protein coupled, 6
10514544	2.30	Gm12695	predicted gene 12695
10423291	2.30	Gm5468	predicted gene 5468
10540085	2.30	Fbln2	fibulin 2
10579649	2.29	Cib3	calcium and integrin binding family member 3
10379511	2.29	Ccl2	chemokine (C-C motif) ligand 2
10358581	2.28	Hmcn1	hemicentin 1
10595211	2.28	Col12a1	collagen, type XII, alpha 1

Transcripts Cluster Id	Fold change	Gene Symbol	Gene description
10352448	2.28	Dusp10	dual specificity phosphatase 10
10458894	2.28	Lox	lysyl oxidase
10347734	2.27	Sgpp2	sphingosine-1-phosphate phosphatase 2
10404895	2.27	5033430I15Rik	RIKEN cDNA 5033430I15 gene
10358656	2.27	Hmcn1	hemicentin 1
10403743	2.27	Inhba	inhibin beta-A
10483081	2.27	Fap	fibroblast activation protein
10560242	2.27	C5ar1	complement component 5a receptor 1
10493842	2.27	Pglyrp3	peptidoglycan recognition protein 3
10497481	2.27	2810416G20Rik	RIKEN cDNA 2810416G20 gene
10417212	2.27	Itgb1	integrin, beta-like 1
10364262	2.26	Itgb2	integrin beta 2
10551883	2.26	Tyrobp	TYRO protein tyrosine kinase binding protein
10358551	2.26	Hmcn1	hemicentin 1
10455123	2.25	Pcdhb19	protocadherin beta 19
10358593	2.25	Hmcn1	hemicentin 1
10531737	2.25	Hpse	heparanase
10414262	2.25	Ear2	eosinophil-associated, ribonuclease A family, member 2
10349671	2.25	Slc26a9	solute carrier family 26, member 9
10421361	2.24	Bmp1	bone morphogenetic protein 1
10356020	2.24	Dock10	dedicator of cytokinesis 10
10507612	2.24	Lepre1	leprecan 1
10395273	2.23	Gdap10	ganglioside-induced differentiation-associated-protein 10
10538150	2.23	Tmem176a	transmembrane protein 176A
10514338	2.23	Mir31	microRNA 31
10381122	2.23	Fkbp10 Nt5c31	FK506 binding protein 10 5'-nucleotidase, cytosolic III-like
10466530	2.22	Pcsk5	proprotein convertase subtilisin/kexin type 5
10356082	2.22	Plscr1	phospholipid scramblase 1
10358591	2.22	Hmcn1	hemicentin 1
10432907	2.22	Krt78	keratin 78
10593032	2.22	Amica1 Gm10684	adhesion molecule, interacts with CXADR antigen 1 predicted gene 10684
10561918	2.22		
10503448	2.22	Mmp16	matrix metalloproteinase 16
10372652	2.21	Lyz1	lysozyme 1
10575976	2.21	Crispld2	cysteine-rich secretory protein LCCL domain containing 2
10418506	2.21	Stab1	stabilin 1
10548608	2.21	Tas2r106	taste receptor, type 2, member 106
10358589	2.21	Hmcn1	hemicentin 1
10432661	2.21	Galnt6	UDP-N-acetyl-alpha-D-galactosamine:polypeptide N-acetylgalactosaminyltransferase 6
10531944	2.21	Gm10047	predicted gene 10047
10603316	2.20	2010204K13Rik	RIKEN cDNA 2010204K13 gene
10595402	2.20	Fam46a	family with sequence similarity 46, member A
10347931	2.20	G530012D18Rik	RIKEN cDNA G530012D1 gene

Transcripts Cluster Id	Fold change	Gene Symbol	Gene description
10568024	2.19	Coro1a	coronin, actin binding protein 1A
10496302	2.19	Manba	mannosidase, beta A, lysosomal
10583291	2.19	2200002K05Rik	RIKEN cDNA 2200002K05 gene
10523717	2.18	Spp1	secreted phosphoprotein 1
10460603	2.18	Efemp2	epidermal growth factor-containing fibulin-like extracellular matrix protein 2
10541683	2.17	C1rb C1ra	complement component 1, r subcomponent B complement component 1, r subcomponent A
10493824	2.17	S100a7a	S100 calcium binding protein A7A
10422496	2.17	Gpr183	G protein-coupled receptor 183
10347888	2.16	Ccl20	chemokine (C-C motif) ligand 20
10489107	2.16	Samhd1	SAM domain and HD domain, 1
10358515	2.16	Hmcn1	hemicentin 1
10365559	2.15	Igf1	insulin-like growth factor 1
10367120	2.14	Mir677	microRNA 677
10438854	2.14	Atp13a4	ATPase type 13A4
10557326	2.14	Il4ra	interleukin 4 receptor, alpha
10562314	2.14	Abpb	androgen binding protein beta
10358633	2.14	Hmcn1	hemicentin 1
10360070	2.14	Fcgr1g	Fc receptor, IgE, high affinity I, gamma polypeptide
10544732	2.13	Skap2	src family associated phosphoprotein 2
10445826	2.13	Mocs1	molybdenum cofactor synthesis 1
10541587	2.13	Clec4a2	C-type lectin domain family 4, member a2
10475113	2.13	Pla2g4b Jmjd7	phospholipase A2, group IVB (cytosolic) jumonji domain containing 7
10539957	2.12	Vmn1r44	vomer nasal 1 receptor 44
10409767	2.12	Golm1	golgi membrane protein 1
10504755	2.12		
10556509	2.11	Spon1	spondin 1, (f-spondin) extracellular matrix protein
10429128	2.11	Sla	src-like adaptor
10391066	2.11	Krt17	keratin 17
10583090	2.11	Mmp10	matrix metalloproteinase 10
10513739	2.11	Tnc	tenascin C
10384004	2.10	Urgcp	upregulator of cell proliferation
10499363	2.10	Bglap	bone gamma carboxyglutamate protein
10358569	2.10	Hmcn1	hemicentin 1
10455139	2.10	Pcdhb22	protocadherin beta 22
10532741	2.10	Tmem119	transmembrane protein 119
10597239	2.10	Pth1r	parathyroid hormone 1 receptor
10607363	2.10		
10507137	2.10	Pdzk1ip1	PDZK1 interacting protein 1
10349947	2.09	Fmod	fibromodulin
10512470	2.09	Cd72	CD72 antigen
10598403	2.09	Praf2	PRA1 domain family 2
10432780	2.09	Krt6a	keratin 6A

Transcripts Cluster Id	Fold change	Gene Symbol	Gene description
10348896	2.09	Gal3st2 Gm6086	galactose-3-O-sulfotransferase 2 predicted gene 6086
10496262	2.09	Nhedc2	Na ⁺ /H ⁺ exchanger domain containing 2
10538590	2.09	Herc5	hect domain and RLD 5
10422748	2.08	C9	complement component 9
10600169	2.08	Bgn	biglycan
10359266	2.07	Pappa2	pappalysin 2
10419288	2.07	Gch1	GTP cyclohydrolase 1
10483719	2.07	Chn1	chimerin (chimaerin) 1
10456357	2.07	Pmaip1	phorbol-12-myristate-13-acetate-induced protein 1
10497276	2.06	Fabp12	fatty acid binding protein 12
10358654	2.06	Hmcn1	hemicentin 1
10595404	2.06	Fam46a	family with sequence similarity 46, member A
10437210	2.06	Bace2	beta-site APP-cleaving enzyme 2
10456653	2.06	Myo5b	myosin VB
10540275	2.06	Gxylt2	glucoside xylosyltransferase 2
10471464	2.05	St6galnac6	ST6 (alpha-N-acetylneuraminyl-2,3-beta-galactosyl-1,3)-N-acetylgalactosaminide alpha-2,6-sialyltransferase 6
10598359	2.05	Syp	synaptophysin
10440513	2.05	Cyyr1	cysteine and tyrosine-rich protein 1
10570749	2.05	Defb2	defensin beta 2
10516735	2.05	Tinag11	tubulointerstitial nephritis antigen-like 1
10500295	2.04	Plekho1	pleckstrin homology domain containing, family O member 1
10458382	2.04	Cd14	CD14 antigen
10531887	2.04	Slc10a6	solute carrier family 10 (sodium/bile acid cotransporter family), member 6
10358575	2.04	Hmcn1	hemicentin 1
10512640	2.04	Gne	glucosamine
10586814	2.04		
10403842	2.03	Elmo1	engulfment and cell motility 1, ced-12 homolog (C. elegans)
10401109	2.03	Gpx2	glutathione peroxidase 2
10482517	2.03	Nmi	N-myc (and STAT) interactor
10425410	2.03	Grap2	GRB2-related adaptor protein 2
10373918	2.03	Lif	leukemia inhibitory factor
10592772	2.03	Abcg4	ATP-binding cassette, sub-family G (WHITE), member 4
10603551	2.02	Cybb	cytochrome b-245, beta polypeptide
10542981	2.02	Gmfg	glia maturation factor, gamma
10358587	2.02	Hmcn1	hemicentin 1
10580608	2.02	2310039D24Rik	RIKEN cDNA 2310039D24 gene
10470462	2.02	Col5a1	collagen, type V, alpha 1
10536667	2.02	Ptprz1	protein tyrosine phosphatase, receptor type Z, polypeptide 1
10523195	2.02	Thap6	THAP domain containing 6
10541446	2.02	Cpamd8	C3 and PZP-like, alpha-2-macroglobulin domain containing 8
10519497	2.01	Steap4	STEAP family member 4
10498053	2.01	4930583H14Rik	RIKEN cDNA 4930583H14 gene
10484733	2.01	Olf1174	olfactory receptor 1174

Transcripts Cluster Id	Fold change	Gene Symbol	Gene description
10523451	2.01	Anxa3	annexin A3
10366848	2.01	B4galnt1 Slc26a10	beta-1,4-N-acetyl-galactosaminyl transferase 1 solute carrier family 26, member 10
10544273	2.01	Clec5a	C-type lectin domain family 5, member a
10476628	2.01	Otor	otoraplin
10463070	2.01	Entpd1	ectonucleoside triphosphate diphosphohydrolase 1
10499358	2.01	Bglap2 Bglap-rs1	bone gamma-carboxyglutamate protein 2 bone gamma carboxyglutamate protein bone gamma-carboxyglutamate protein, related sequence 1
10522666	2.01	2310040G07Rik	RIKEN cDNA 2310040G07 gene
10490159	2.00	Pmepa1	prostate transmembrane protein, androgen induced 1
10416215	2.00	Loxl2	lysyl oxidase-like 2
10474520	2.00	Tdh	L-threonine dehydrogenase
10558769	1.99	Ifitm1	interferon induced transmembrane protein 1
10399308	1.99	Fkbp1b	FK506 binding protein 1b
10587829	1.99	Plod2	procollagen lysine, 2-oxoglutarate 5-dioxygenase 2
10492590	1.99	Ppm1l	protein phosphatase 1 (formerly 2C)-like
10493850	1.99	Sprr2a1 Sprr2a2 Sprr2a3	small proline-rich protein 2A1 small proline-rich protein 2A2 small proline-rich protein 2A3
10544542	1.99	Zfp786	zinc finger protein 786
10447056	1.99	Qpct	glutaminyl-peptide cyclotransferase (glutaminyl cyclase)
10583262	1.99	Gm10706	predicted gene 10706
10546685	1.98	Eif4e3	eukaryotic translation initiation factor 4E member 3
10429460	1.98	7120482A17Rik	RIKEN cDNA 7120482A17 gene
10493809	1.98	S100a2	S100 calcium binding protein A2
10498992	1.98	Tlr2	toll-like receptor 2
10480035	1.98	Pfkfb3	6-phosphofructo-2-kinase/fructose-2,6-biphosphatase 3
10504650	1.98	E230008N13Rik	RIKEN cDNA E230008N13 gene
10441244	1.97	Fam3b	family with sequence similarity 3, member B
10488816	1.97	Ahcy	S-adenosylhomocysteine hydrolase
10496373	1.97	Ddit4l	DNA-damage-inducible transcript 4-like
10556583	1.97	Nucb2	nucleobindin 2
10547621	1.97	Apobec1	apolipoprotein B mRNA editing enzyme, catalytic polypeptide 1
10459866	1.97	Slc14a1	solute carrier family 14 (urea transporter), member 1
10607124	1.97	Chrdl1	chordin-like 1
10576118	1.96	9330133O14Rik	RIKEN cDNA 9330133O14 gene
10450325	1.96	Cfb	complement factor B
10363486	1.96	Lrrc20	leucine rich repeat containing 20
10484894	1.96	Ptpnj	protein tyrosine phosphatase, receptor type, J
10587023	1.96	Rab27a	RAB27A, member RAS oncogene family
10561498	1.96	C330005M16Rik	RIKEN cDNA C330005M16 gene
10358894	1.95	Sord	sorbitol dehydrogenase
10523845	1.95	Ephx4	epoxide hydrolase 4

Transcripts Cluster Id	Fold change	Gene Symbol	Gene description
10371240	1.94	Tle6	transducin-like enhancer of split 6, homolog of Drosophila E(spl)
10473809	1.94	Sfpi1	SFFV proviral integration 1
10475437	1.94	Sord	sorbitol dehydrogenase
10360344	1.94	Darc	Duffy blood group, chemokine receptor
10490818	1.94	Stmn2	stathmin-like 2
10489343	1.93	Ptpla	protein tyrosine phosphatase-like (proline instead of catalytic arginine), member a
10458828	1.93	Cdo1	cysteine dioxygenase 1, cytosolic
10593270	1.93	Ttc12	tetratricopeptide repeat domain 12
10488185	1.93	Bfsp1	beaded filament structural protein 1, in lens-CP94
10412417	1.93	3110070M22Rik Gm7120	RIKEN cDNA 3110070M22 gene predicted gene 7120
10427336	1.93	Nckap11	NCK associated protein 1 like
10446965	1.93	Rasgrp3	RAS, guanyl releasing protein 3
10558687	1.93	1190003J15Rik	RIKEN cDNA 1190003J15 gene
10517165	1.93	Cd52	CD52 antigen
10502224	1.93	Sgms2	sphingomyelin synthase 2
10602840	1.93	Sh3kbp1	SH3-domain kinase binding protein 1
10580469	1.93	Cbln1	cerebellin 1 precursor protein
10415604	1.92	Gjb2 Gm10871	gap junction protein, beta 2 predicted gene 10871
10587194	1.92	Gnb5	guanine nucleotide binding protein (G protein), beta 5
10362536	1.92		
10419198	1.92	Ero11	ERO1-like (<i>S. cerevisiae</i>)
10491091	1.92	Tnfsf10	tumor necrosis factor (ligand) superfamily, member 10
10439762	1.92	Ahcy	S-adenosylhomocysteine hydrolase
10486552	1.92	Lrrc57	leucine rich repeat containing 57
10570612	1.92	Defb5	defensin beta 5
10581538	1.92	Nqo1	NAD(P)H dehydrogenase, quinone 1
10358601	1.92	Hmcn1	hemicentin 1
10575019	1.92	Gm10629	predicted gene 10629
10358666	1.91	Hmcn1	hemicentin 1
10589695	1.91	Rtp3	receptor transporter protein 3
10358531	1.91	Hmcn1	hemicentin 1
10344713	1.91	Ahcy	S-adenosylhomocysteine hydrolase
10393559	1.91	Timp2	tissue inhibitor of metalloproteinase 2
10573924	1.91	Mmp2	matrix metalloproteinase 2
10452571	1.91	Ptprm	protein tyrosine phosphatase, receptor type, M
10413280	1.91		
10501063	1.91	Cd53	CD53 antigen
10357604	1.91	Ikbke	inhibitor of kappaB kinase epsilon
10534728	1.91	Slc12a9	solute carrier family 12 (potassium/chloride transporters), member 9
10550906	1.91	Plaur	plasminogen activator, urokinase receptor
10585834	1.91	6030419C18Rik	RIKEN cDNA 6030419C18 gene

Transcripts Cluster Id	Fold change	Gene Symbol	Gene description
10552494	1.91	Klk9	kallikrein related-peptidase 9
10587315	1.90	Gsta4	glutathione S-transferase, alpha 4
10529034	1.90	Cgref1	cell growth regulator with EF hand domain 1
10376019	1.90	Rpl9-ps3	ribosomal protein L9, pseudogene 3
10398814	1.90	Kif26a	kinesin family member 26A
10435641	1.90	Fstl1	follistatin-like 1
10426606	1.90	4930415O20Rik	RIKEN cDNA 4930415O20 gene
10599422	1.90	1110059M19Rik	RIKEN cDNA 1110059M19 gene
10355984	1.89	Serpine2	serine (or cysteine) peptidase inhibitor, clade E, member 2
10371959	1.89	Elk3 Cdk17	ELK3, member of ETS oncogene family cyclin-dependent kinase 17
10466712	1.89	Mamdc2	MAM domain containing 2
10417269	1.89		
10370721	1.89	Sbno2	strawberry notch homolog 2 (Drosophila)
10552488	1.89	Klk10	kallikrein related-peptidase 10
10436841	1.89	Il10rb	interleukin 10 receptor, beta
10458340	1.89	Hbegf	heparin-binding EGF-like growth factor
10578504	1.89	1700029J07Rik	RIKEN cDNA 1700029J07 gene
10404359	1.88	Mboat1	membrane bound O-acyltransferase domain containing 1
10541910	1.88	Vwf	Von Willebrand factor homolog
10358652	1.88	Hmcn1	hemicentin 1
10511375	1.88	Cyp7a1	cytochrome P450, family 7, subfamily a, polypeptide 1
10586168	1.88	Snord16a	small nucleolar RNA, C/D box 16A
10354576	1.88	Dnahc7b Dnahc7a	dynein, axonemal, heavy chain 7B dynein, axonemal, heavy chain 7A
10389672	1.88	Olf464	olfactory receptor 464
10595668	1.88	Ankrd34c	ankyrin repeat domain 34C
10508721	1.87	Snora44	small nucleolar RNA, H/ACA box 44
10358553	1.87	Hmcn1	hemicentin 1
10565255	1.87	9930013L23Rik	RIKEN cDNA 9930013L23 gene
10389391	1.87	Gm11444	predicted gene 11444
10466000	1.87	Tmem138	transmembrane protein 138
10534570	1.87	Orai2	ORAI calcium release-activated calcium modulator 2
10505517	1.87	Tlr4	toll-like receptor 4
10387568	1.87	Tnfsf12-Tnfsf13	Tnfsf12-tnfsf13 readthrough transcript tumor necrosis factor (ligand) superfamily, member 13 tumor necrosis factor (ligand) superfamily, member 12
10502355	1.86	Gm4861	predicted gene 4861
10496359	1.86	Emcn	endomucin
10363070	1.86	Gp49a Lilrb4	glycoprotein 49 A leukocyte immunoglobulin-like receptor, subfamily B, member 4
10450484	1.86	Aif1	allograft inflammatory factor 1
10483865	1.86	Fkbp7	FK506 binding protein 7
10452485	1.86	Rab31	RAB31, member RAS oncogene family
10605559	1.86		

Transcripts Cluster Id	Fold change	Gene Symbol	Gene description
10483000	1.86	Itgb6	integrin beta 6
10490611	1.86	Ptk6	PTK6 protein tyrosine kinase 6
10401296	1.86	Slc8a3	solute carrier family 8 (sodium/calcium exchanger), member 3
10490212	1.86	Ctsz	cathepsin Z
10541678	1.86	C1ra	complement component 1, r subcomponent A
10579012	1.85	Csgalnact1	chondroitin sulfate N-acetylgalactosaminyltransferase 1
10495891	1.85	Arsj	arylsulfatase J
10422760	1.85	Fyb	FYN binding protein
10570516	1.85	Kbtbd11	kelch repeat and BTB (POZ) domain containing 11
10385337	1.85	Fabp6	fatty acid binding protein 6, ileal (gastrotropin)
10431962	1.85	Endou	endonuclease, polyU-specific
10591135	1.85	Fat3	FAT tumor suppressor homolog 3 (Drosophila)
10389389	1.85	Gm10372	predicted gene 10372
10472467	1.85		
10348902	1.85	Gal3st2 Gm6086	galactose-3-O-sulfotransferase 2 predicted gene 6086
10409486	1.85	Pdlim7	PDZ and LIM domain 7
10432711	1.84	Krt84	keratin 84
10515735	1.84	Szt2	seizure threshold 2
10531556	1.84	Gk2	glycerol kinase 2
10530827	1.84	Spink2	serine peptidase inhibitor, Kazal type 2
10563077	1.84	Rcn3	reticulocalbin 3, EF-hand calcium binding domain
10547088	1.84	Mbd4 Ift122	methyl-CpG binding domain protein 4 intraflagellar transport 122 homolog (Chlamydomonas)
10513945	1.84	2310002L09Rik	RIKEN cDNA 2310002L09 gene
10440673	1.84	Krtap14	keratin associated protein 14
10530269	1.84	Rbm47	RNA binding motif protein 47
10565067	1.84	Nmb	neuromedin B
10378286	1.84	Itgae	integrin alpha E, epithelial-associated
10539577	1.84	Spr	sepiapterin reductase
10350742	1.84	Rnasel	ribonuclease L (2', 5'-oligoadenylate synthetase-dependent)
10407435	1.84	Akr1c18	aldo-keto reductase family 1, member C18
10358648	1.84	Hmcn1	hemicentin 1
10550840	1.84	Zfp112	zinc finger protein 112
10506870	1.84	Txndc12	thioredoxin domain containing 12 (endoplasmic reticulum)
10403584	1.83	Nid1	nidogen 1
10433431	1.83		
10537146	1.83	Akr1b8	aldo-keto reductase family 1, member B8
10455118	1.83	Pcdhb18	protocadherin beta 18
10564813	1.83	Mesp1	mesoderm posterior 1
10492682	1.83	Fam198b	family with sequence similarity 198, member B
10487453	1.83	Nphp1	nephronophthisis 1 (juvenile) homolog (human)
10472047	1.83	Tas2r134	taste receptor, type 2, member 134
10517053	1.83	Trnp1	TMF1-regulated nuclear protein 1
10358517	1.83	Hmcn1	hemicentin 1
10358535	1.83	Hmcn1	hemicentin 1

Transcripts Cluster Id	Fold change	Gene Symbol	Gene description
10597461	1.83	Cmtm7 Gm9888	CKLF-like MARVEL transmembrane domain containing 7 predicted gene 9888
10493876	1.83	Sprr2h	small proline-rich protein 2H
10355205	1.83	D630023F18Rik	RIKEN cDNA D630023F18 gene
10494271	1.83	Ctss	cathepsin S
10501199	1.83	Gstm7	glutathione S-transferase, mu 7
10595094	1.82	2310046A06Rik	RIKEN cDNA 2310046A06 gene
10421143	1.82	Adam28	a disintegrin and metallopeptidase domain 28
10485081	1.82	Dgkz	diacylglycerol kinase zeta
10547282	1.82	Zfp9	zinc finger protein 9
10438603	1.82	Igf2bp2	insulin-like growth factor 2 mRNA binding protein 2
10448836	1.82	Tmem204	transmembrane protein 204
10588263	1.82	Slco2a1	solute carrier organic anion transporter family, member 2a1
10547206	1.82	Fxyd4	FXD domain-containing ion transport regulator 4
10589884	1.82	Bcl2a1c	B-cell leukemia/lymphoma 2 related protein A1c
10424404	1.82	Pvt1	plasmacytoma variant translocation 1
10399407	1.82	Vsnl1	visinin-like 1
10466886	1.81		
10580033	1.81	Cd97	CD97 antigen
10354777	1.81	Satb2	special AT-rich sequence binding protein 2
10455135	1.81	Pcdhb21	protocadherin beta 21
10561025	1.81	Cnfn	cornifelin
10461110	1.81		
10580202	1.81	Dand5 Gadd45gip1	DAN domain family, member 5 growth arrest and DNA-damage-inducible, gamma interacting protein 1
10355199	1.81	Crygb	crystallin, gamma B
10406504	1.81	Edil3	EGF-like repeats and discoidin I-like domains 3
10389222	1.81	Ccl6	chemokine (C-C motif) ligand 6
10534862	1.81	Pcolce	procollagen C-endopeptidase enhancer protein
10374453	1.81	Glul	glutamate-ammonia ligase (glutamine synthetase)
10526520	1.81	Plod3	procollagen-lysine, 2-oxoglutarate 5-dioxygenase 3
10600825	1.81	Zc3h12b	zinc finger CCCH-type containing 12B
10402630	1.81	Stk30	serine/threonine kinase 30
10363231	1.80	Smpd13a	sphingomyelin phosphodiesterase, acid-like 3A
10517687	1.80	Gm16287	predicted gene 16287
10587150	1.80	Myo5c	myosin VC
10504757	1.80	BC005685	
10585048	1.80	Cadm1	cell adhesion molecule 1
10376885	1.80	Snord49b	small nucleolar RNA, C/D box 49B
10576335	1.80	Def8	differentially expressed in FDCEP 8
10480468	1.80	Tbpl2	TATA box binding protein like 2
10358567	1.80	Hmcn1	hemicentin 1
10485117	1.80	Creb3l1	cAMP responsive element binding protein 3-like 1
10522060	1.80	Fam114a1	family with sequence similarity 114, member A1
10593035	1.79	Tmprss4	transmembrane protease, serine 4

Transcripts Cluster Id	Fold change	Gene Symbol	Gene description
10368806	1.79	Smpd2	sphingomyelin phosphodiesterase 2, neutral
10542836	1.79	Klhdc5	kelch domain containing 5
10541564	1.79	Clec4a3	C-type lectin domain family 4, member a3
10451763	1.79	Satb1	special AT-rich sequence binding protein 1
10463265	1.79	Cnm1	cyclin M1
10471844	1.79	Nek6	NIMA (never in mitosis gene a)-related expressed kinase 6
10345807	1.79	Il18r1	interleukin 18 receptor 1
10593050	1.79	Il10ra	interleukin 10 receptor, alpha
10569877	1.79	1810033B17Rik	RIKEN cDNA 1810033B17 gene
10466903	1.79	4430402I18Rik Slc1a1 Ppapdc2	RIKEN cDNA 4430402I18 gene solute carrier family 1 (neuronal/epithelial high affinity glutamate transporter, system Xag), member 1 phosphatidic acid phosphatase type 2 domain containing 2
10380571	1.78	Gngt2 Abi3	guanine nucleotide binding protein (G protein), gamma transducing activity polypeptide 2 ABI gene family, member 3
10435565	1.78	Hcls1	hematopoietic cell specific Lyn substrate 1
10467578	1.78	Pik3ap1	phosphoinositide-3-kinase adaptor protein 1
10444258	1.78	Psmb8	proteasome (prosome, macropain) subunit, beta type 8 (large multifunctional peptidase 7)
10495830	1.78	Sec24d	Sec24 related gene family, member D (<i>S. cerevisiae</i>)
10489909	1.78	Ube2v1	ubiquitin-conjugating enzyme E2 variant 1
10512774	1.78	Coro2a	coronin, actin binding protein 2A
10458589	1.78	Preli2	PRELI domain containing 2
10467887	1.78	Cpn1	carboxypeptidase N, polypeptide 1
10586079	1.78	Itga11	integrin alpha 11
10471474	1.78	Ak1	adenylate kinase 1
10361897	1.78	Ifngr1	interferon gamma receptor 1
10574384	1.78	NdrG4	N-myc downstream regulated gene 4
10406270	1.77	GlrX	glutaredoxin
10358631	1.77	Hmcn1	hemicentin 1
10405566	1.77	AU042651	
10475027	1.77	Tyro3	TYRO3 protein tyrosine kinase 3
10501586	1.77	S1pr1	sphingosine-1-phosphate receptor 1
10403023	1.77	Gm7016	predicted gene 7016
10562761	1.77	Clec11a	C-type lectin domain family 11, member a
10500808	1.77	Olfml3	olfactomedin-like 3
10363161	1.77	Tmem229b Gm5423	transmembrane protein 229B predicted gene 5423
10484888	1.77	Ptprj	protein tyrosine phosphatase, receptor type, J
10402841	1.77	Brf1	BRF1 homolog, subunit of RNA polymerase III transcription initiation factor IIIB (<i>S. cerevisiae</i>)
10455128	1.77	Pcdhb20	protocadherin beta 20
10456492	1.77	D18Ertd653e	DNA segment, Chr 18, ERATO Doi 653, expressed
10357345	1.77	Nckap5	NCK-associated protein 5

Transcripts Cluster Id	Fold change	Gene Symbol	Gene description
10494445	1.77	Lix1l	Lix1-like
10511258	1.77	Fam132a	family with sequence similarity 132, member A
10387536	1.77	Cd68	CD68 antigen
10423471	1.77	Ctnnd2	catenin (cadherin associated protein), delta 2
10572865	1.77	Isx	intestine specific homeobox
10366346	1.77	Phlda1	pleckstrin homology-like domain, family A, member 1
10531588	1.77	Prkg2	protein kinase, cGMP-dependent, type II
10347919	1.76	A530040E14Rik	RIKEN cDNA A530040E14 gene
10574166	1.76	Cpne2	copine II
10515981	1.76	Mir30e	microRNA 30e
10494817	1.76	Ngf	nerve growth factor
10492355	1.76	Mme	membrane metallo endopeptidase
10538126	1.76	Gimap4	GTPase, IMAP family member 4
10356291	1.76	A530040E14Rik	RIKEN cDNA A530040E14 gene
10487575	1.76	Gm10762	predicted gene 10762
10415411	1.76	Nynrin	NYN domain and retroviral integrase containing
10481518	1.76	Ptges	prostaglandin E synthase
10447294	1.76	Prkce	protein kinase C, epsilon
10412911	1.76		
10538901	1.76	BC005685	
10585438	1.76	Crabp1	cellular retinoic acid binding protein I
10481291	1.76	Gtf3c5	general transcription factor IIIC, polypeptide 5
10401935	1.76	BC005685	
10582860	1.76	A530040E14Rik	RIKEN cDNA A530040E14 gene
10472162	1.76	Gpd2	glycerol phosphate dehydrogenase 2, mitochondrial
10582877	1.76	A530040E14Rik	RIKEN cDNA A530040E14 gene
10467124	1.76	Acta2	actin, alpha 2, smooth muscle, aorta
10447885	1.76	Acat3 Tcp1	acetyl-Coenzyme A acetyltransferase 3 t-complex protein 1
10494978	1.76	Ptpn22	protein tyrosine phosphatase, non-receptor type 22 (lymphoid)
10424670	1.76	Hemt1 Gml	hematopoietic cell transcript 1 GPI anchored molecule like protein
10469811	1.76	Il1f10	interleukin 1 family, member 10
10591116	1.76	Fat3	FAT tumor suppressor homolog 3 (Drosophila)
10411595	1.76	Naip2	NLR family, apoptosis inhibitory protein 2
10490775	1.76	Gm10748	predicted gene 10748
10358583	1.75	Hmcn1	hemicentin 1
10559467	1.75	Pira1 Pira2 Pira6 Pira7 Pira11 Lilra6 Gm15448 Gm10693 LOC100046578	paired-Ig-like receptor A1 paired-Ig-like receptor A2 paired-Ig-like receptor A6 paired-Ig-like receptor A7 paired-Ig-like receptor A11 leukocyte immunoglobulin-like receptor, subfamily A (with TM domain), member 6 predicted gene 15448 predicted pseudogene 10693 similar to PIRA2
10560313	1.75		
10402283	1.75	Itpk1	inositol 1,3,4-triphosphate 5/6 kinase
10351224	1.75	F5	coagulation factor V
10399586	1.75	Zfp125	zinc finger protein 125

Transcripts Cluster Id	Fold change	Gene Symbol	Gene description
10559454	1.75	Pira11 Pira7 Pira6 Lilra6 Pira2 Gm15448 Gm10693	paired-Ig-like receptor A11 paired-Ig-like receptor A7 paired-Ig-like receptor A6 leukocyte immunoglobulin-like receptor, subfamily A (with TM domain), member 6 paired-Ig-like receptor A2 predicted gene 15448 predicted pseudogene 10693
10576332	1.75	Tubb3 Mc1r	tubulin, beta 3 melanocortin 1 receptor
10439016	1.75	4930444G20Rik AF366264	RIKEN cDNA 4930444G20 gene cDNA sequence AF366264
10429547	1.75	Cyp11b2	cytochrome P450, family 11, subfamily b, polypeptide 2
10515115	1.75	Slc5a9	solute carrier family 5 (sodium/glucose cotransporter), member 9
10468329	1.75	Obfc1	oligonucleotide/oligosaccharide-binding fold containing 1
10543544	1.75	Lrrc4	leucine rich repeat containing 4
10438445	1.75	Klhl6	kelch-like 6 (Drosophila)
10583008	1.75	Casp12	caspase 12
10537499	1.75	Tas2r137	taste receptor, type 2, member 137
10424543	1.75	Wisp1	WNT1 inducible signaling pathway protein 1
10465831	1.75	5730408K05Rik	RIKEN cDNA 5730408K05 gene
10366653	1.74	Wif1	Wnt inhibitory factor 1
10384725	1.74	Rel	reticuloendotheliosis oncogene
10561142	1.74	Nlrp9c	NLR family, pyrin domain containing 9C
10593499	1.74	AI593442	
10539517	1.74	Dysf	dysferlin
10516906	1.74	Snora73b	small nucleolar RNA, H/ACA box 73b
10442565	1.74	Nox1	NADPH oxidase organizer 1
10598794	1.74		
10531342	1.74	U90926	
10517274	1.74	Sepn1	selenoprotein N, 1
10378765	1.73	Dbil5	diazepam binding inhibitor-like 5
10503374	1.73		
10360832	1.73	1700056E22Rik	RIKEN cDNA 1700056E22 gene
10391277	1.73	Ghdc	GH3 domain containing
10493860	1.73	Spr2b	small proline-rich protein 2B
10590801	1.73	Birc3	baculoviral IAP repeat-containing 3
10601421	1.73	A630033H20Rik	RIKEN cDNA A630033H20 gene
10489246	1.73	Mafb	v-maf musculoaponeurotic fibrosarcoma oncogene family, protein B (avian)
10361926	1.73	Map3k5	mitogen-activated protein kinase kinase kinase 5
10476321	1.73	Prnd	prion protein dublet
10439312	1.73	Cd86	CD86 antigen
10381962	1.73	Ace	angiotensin I converting enzyme (peptidyl-dipeptidase A) 1
10568601	1.73	BC002195	
10409713	1.73	Slc28a3	solute carrier family 28 (sodium-coupled nucleoside transporter), member 3
10470936	1.73	Tbc1d13	TBC1 domain family, member 13

Transcripts Cluster Id	Fold change	Gene Symbol	Gene description
10519140	1.73	Mmp23	matrix metalloproteinase 23
10568202	1.73	1-Sep	septin 1
10358650	1.73	Hmcn1	hemicentin 1
10382421	1.73	Gpr142	G protein-coupled receptor 142
10360338	1.73	Fcgr1a	Fc receptor, IgE, high affinity I, alpha polypeptide
10455084	1.72	Pcdhb10	protocadherin beta 10
10594909	1.72	Gm10641	predicted gene 10641
10413710	1.72	Nt5dc2 Stab1	5'-nucleotidase domain containing 2 stabilin 1
10358599	1.72	Hmcn1	hemicentin 1
10425945	1.72	Fbln1	fibulin 1
10429160	1.72	St3gal1	ST3 beta-galactoside alpha-2,3-sialyltransferase 1
10392221	1.72	Pecam1	platelet/endothelial cell adhesion molecule 1
10474159	1.72	Apip	APAF1 interacting protein
10443980	1.72	Myo1f	myosin IF
10479971	1.72	Gm10855	predicted gene 10855
10355403	1.72	Fn1	fibronectin 1
10529235	1.72	Gm10463	predicted gene 10463
10396442	1.72	Snopc1	small nuclear RNA activating complex, polypeptide 1
10352725	1.72	Tmem206	transmembrane protein 206
10348537	1.72	Ramp1	receptor (calcitonin) activity modifying protein 1
10591739	1.72	Acp5	acid phosphatase 5, tartrate resistant
10466925	1.72	Ak3	adenylate kinase 3
10421615	1.72	Spert	spermatid associated
10514956	1.72	Scp2	sterol carrier protein 2, liver
10535938	1.71	N4bp2l1	NEDD4 binding protein 2-like 1
10531370	1.71	Naaa	N-acyl ethanolamine acid amidase
10410078	1.71	Slc35d2	solute carrier family 35, member D2
10408523	1.71	Foxq1	forkhead box Q1
10425066	1.71	Csf2rb	colony stimulating factor 2 receptor, beta, low-affinity (granulocyte-macrophage)
10511416	1.71	Tox	thymocyte selection-associated high mobility group box
10490913	1.71	Car3	carbonic anhydrase 3
10529656	1.71	Nsg1	neuron specific gene family member 1
10358623	1.71	Hmcn1	hemicentin 1
10406176	1.71	Slc9a3	solute carrier family 9 (sodium/hydrogen exchanger), member 3
10378816	1.71	Slc6a4	solute carrier family 6 (neurotransmitter transporter, serotonin), member 4
10439346	1.71	Eaf2	ELL associated factor 2
10392449	1.71	Wipi1	WD repeat domain, phosphoinositide interacting 1
10469695	1.71	Apbb1ip	amyloid beta (A4) precursor protein-binding, family B, member 1 interacting protein
10505224	1.70	Snx30	sorting nexin family member 30
10438708	1.70	Masp1	mannan-binding lectin serine peptidase 1
10355141	1.70	Klf7	Kruppel-like factor 7 (ubiquitous)

Transcripts Cluster Id	Fold change	Gene Symbol	Gene description
10428960	1.70	Gsdmc2 Gsdmc3 Gsdmc4	gasdermin C2 gasdermin C3 gasdermin C4 gasdermin C
10416956	1.70	Mir19b-1	microRNA 19b-1
10459193	1.70	Ppargc1b	peroxisome proliferative activated receptor, gamma, coactivator 1 beta
10551754	1.70	4930432E11Rik	RIKEN cDNA 4930432E11 gene
10460257	1.70	1700055N04Rik	RIKEN cDNA 1700055N04 gene
10498500	1.70	Vmn2r2	vomeronasal 2, receptor 1 vomeronasal 2, receptor 2 vomeronasal 2, receptor 3
10541885	1.70	Scnn1a	sodium channel, nonvoltage-gated 1 alpha
10487595	1.69		
10506594	1.69	Acot11 Fam151a	acyl-CoA thioesterase 11 family with sequence simliarity 151, member A
10515841	1.69	Gm12866	predicted gene 12866
10543428	1.69	Iqub	IQ motif and ubiquitin domain containing
10508723	1.69	Snora61	small nucleolar RNA, H/ACA box 61
10520121	1.69		
10565132	1.69	BC048679	
10533720	1.69	Niacr1	niacin receptor 1
10548307	1.69	Klrb1c	killer cell lectin-like receptor subfamily B member 1C
10398117	1.69	Bdkrb2	bradykinin receptor, beta 2
10436752	1.69	Krtap15	keratin associated protein 15
10578405	1.69		
10547404	1.69	Erc1	ELKS/RAB6-interacting/CAST family member 1
10579468	1.69	Haus8	4HAUS augmin-like complex, subunit 8
10469786	1.69	Il1f9	interleukin 1 family, member 9
10439058	1.69	Lrrc33	leucine rich repeat containing 33
10402136	1.69	Gpr68	G protein-coupled receptor 68
10344837	1.69	Prex2	phosphatidylinositol-3,4,5-trisphosphate-dependent Rac exchange factor 2
10398240	1.68	Eml1	echinoderm microtubule associated protein like 1
10415081	1.68		
10398859	1.68	Adssl1	adenylosuccinate synthetase like 1
10380871	1.68	Stard3	START domain containing 3
10586076	1.68		
10481949	1.68	Traf1	TNF receptor-associated factor 1
10547740	1.68	C1s	complement component 1, s subcomponent
10575745	1.68	Atmin	ATM interactor
10567468	1.68	Dnahc3	dynein, axonemal, heavy chain 3
10425755	1.68		
10370946	1.68	Mobk12a	MOB1, Mps One Binder kinase activator-like 2A (yeast)
10550593	1.68	Six5	sine oculis-related homeobox 5 homolog (Drosophila)
10549886	1.68	Zfp264	zinc finger protein 264
10603583	1.68	Srpx	sushi-repeat-containing protein
10402325	1.68	Asb2	ankyrin repeat and SOCS box-containing 2
10476945	1.68	Cst7	cystatin F (leukocystatin)

Transcripts Cluster Id	Fold change	Gene Symbol	Gene description
10373768	1.68	Selm	selenoprotein M
10421917	1.68	Pabpc4	poly(A) binding protein, cytoplasmic 4
10485633	1.68	Gm10796	predicted gene 10796
10484283	1.68	Pde1a	phosphodiesterase 1A, calmodulin-dependent
10482030	1.68	Stom	stomatin
10359282	1.67	Pappa2	pappalysin 2
10479510	1.67	Col20a1 9230112E08Rik	collagen, type XX, alpha 1 RIKEN cDNA 9230112E08 gene
10561031	1.67	Lipe	lipase, hormone sensitive
10384154	1.67	Myo1g	myosin IG
10605986	1.67	Slc7a3	solute carrier family 7 (cationic amino acid transporter, y+ system), member 3
10466935	1.67	Rln1	relaxin 1
10461160	1.67		
10563816	1.67	Fancf Gas2	Fanconi anemia, complementation group F growth arrest specific 2
10474096	1.67	Lrrc4c	leucine rich repeat containing 4C
10523766	1.67	Lrrc8c	leucine rich repeat containing 8 family, member C
10598309	1.67	Cacna1f	calcium channel, voltage-dependent, alpha 1F subunit
10471967	1.67	Mbd5	methyl-CpG binding domain protein 5
10497920	1.67	Ankrd50	ankyrin repeat domain 50
10375751	1.67	Adamts2	a disintegrin-like and metallopeptidase (reprolysin type) with thrombospondin type 1 motif, 2
10457587	1.67	Zfp521	zinc finger protein 521
10578264	1.67	Msr1	macrophage scavenger receptor 1
10462363	1.67	Jak2	Janus kinase 2
10452648	1.67	Emilin2	elastin microfibril interfacier 2
10455148	1.67	Pcdhga12 Pcdhga3 Pcdhga8 Pcdhga9 Pcdhgb1 Pcdhgb6 Pcdhgc3 Pcdhgc4 Pcdhga11 Pcdhga7 Pcdhgb2 Pcdhga6 Pcdhgb5 Pcdhgb8 Pcdhgc5 Pcdhga4 Pcdhga5 Pcdhga10 Pcdhga2 Pcdhgb4 Pcdhgb7 Pcdha4-g	protocadherin gamma subfamily A, 12 protocadherin gamma subfamily A, 3 protocadherin gamma subfamily A, 8 protocadherin gamma subfamily A, 9 protocadherin gamma subfamily B, 1 protocadherin gamma subfamily B, 6 protocadherin gamma subfamily C, 3 protocadherin gamma subfamily C, 4 protocadherin gamma subfamily A, 11 protocadherin gamma subfamily A, 7 protocadherin gamma subfamily B, 2 protocadherin gamma subfamily A, 6 protocadherin gamma subfamily B, 5 protocadherin gamma subfamily B, 8 protocadherin gamma subfamily C, 5 protocadherin gamma subfamily A, 4 protocadherin gamma subfamily A, 5 protocadherin gamma subfamily A, 1 protocadherin gamma subfamily A, 10 protocadherin gamma subfamily A, 2 protocadherin gamma subfamily B, 4 protocadherin gamma subfamily B, 7 protocadherin alpha 4-gamma
10522075	1.67	Klhl5	kelch-like 5 (Drosophila)
10390032	1.67	Acsf2	acyl-CoA synthetase family member 2

Transcripts Cluster Id	Fold change	Gene Symbol	Gene description
10466659	1.67	Gda	guanine deaminase
10583870	1.66	Bmper	BMP-binding endothelial regulator
10475643	1.66	Fgf7	fibroblast growth factor 7
10523693	1.66	Dmp1	dentin matrix protein 1
10403220	1.66	Abcb5	ATP-binding cassette, sub-family B (MDR/TAP), member 5
10419151	1.66	Ear1	eosinophil-associated, ribonuclease A family, member 1
10469712	1.66	Pdss1	prenyl (solanesyl) diphosphate synthase, subunit 1
10548552	1.66	Klra2	killer cell lectin-like receptor, subfamily A, member 2
10480971	1.66	Snpc4	small nuclear RNA activating complex, polypeptide 4
10532169	1.66	Mfsd7a	major facilitator superfamily domain containing 7A
10506146	1.66	Gm10305	predicted gene 10305
10596303	1.66	Acpp	acid phosphatase, prostate
10599008	1.66	Slc6a14	solute carrier family 6 (neurotransmitter transporter), member 14
10358490	1.66	Hmcn1	hemicentin 1
10472181	1.66	Galnt5 Ernm	UDP-N-acetyl-alpha-D-galactosamine:polypeptide N-acetylgalactosaminyltransferase 5 ermin, ERM-like protein
10408741	1.66	Txndc5	thioredoxin domain containing 5
10534002	1.66	Tmem132d	transmembrane protein 132D
10397633	1.66	Flrt2	fibronectin leucine rich transmembrane protein 2
10565204	1.66	Bnc1	basonuclin 1
10422436	1.66	Dock9	dedicator of cytokinesis 9
10412699	1.66	Gm10404	predicted gene 10404
10505994	1.66	Fggy	FGGY carbohydrate kinase domain containing
10529903	1.66	Fam184b	family with sequence similarity 184, member B
10583316	1.66	Taf1d	TATA box binding protein (Tbp)-associated factor, RNA polymerase I, D
10538356	1.66	Chn2 9130019P16Rik	chimerin (chimaerin) 2 RIKEN cDNA 9130019P16 gene
10376956	1.66	Hs3st3a1	heparan sulfate (glucosamine) 3-O-sulfotransferase 3A1
10362538	1.66	Lama4	laminin, alpha 4
10494972	1.66	Bcl2l15	BCL2-like 15
10359034	1.65	Qsox1	quiescin Q6 sulfhydryl oxidase 1
10416411	1.65	Esd	esterase D/formylglutathione hydrolase
10507086	1.65	Skint2	selection and upkeep of intraepithelial T cells 2
10540289	1.65	Gm9871	predicted gene 9871
10581175	1.65	B3gnt9	UDP-GlcNAc:betaGal beta-1,3-N-acetylglucosaminyltransferase 9
10593492	1.65	Zc3h12c	zinc finger CCCH type containing 12C
10567825	1.65	Lat	linker for activation of T cells
10477475	1.65	Plunc	palate, lung, and nasal epithelium associated
10440909	1.65		
10431051	1.65	Scube1	signal peptide, CUB domain, EGF-like 1
10593449	1.65	Layn	layilin
10433885	1.65	Cebpd	CCAAT/enhancer binding protein (C/EBP), delta

Transcripts Cluster Id	Fold change	Gene Symbol	Gene description
10409551	1.65	Pitx1	paired-like homeodomain transcription factor 1
10428707	1.65	Has2	hyaluronan synthase 2
10428998	1.65	Asap1	ArfGAP with SH# domain, ankyrin repeat and PH domain1
10461158	1.65	Snhg1	small nucleolar RNA host gene (non-protein coding) 1
10423556	1.65	Pgcp	plasma glutamate carboxypeptidase
10358658	1.65	Hmcn1	hemicentin 1
10413148	1.65	A430057M04Rik	RIKEN cDNA A430057M04 gene
10361995	1.65	Fam54a	family with sequence similarity 54, member A
10464425	1.65	Grk5	G protein-coupled receptor kinase 5
10431738	1.65	Prickle1	prickle homolog 1 (Drosophila)
10545014	1.65	Vopp1	vesicular, overexpressed in cancer, prosurvival protein 1
10348432	1.65	Agap1	ArfGAP with GTPase domain, ankyrin repeat and PH domain 1
10428515	1.65	Csmd3	CUB and Sushi multiple domains 3
10509280	1.65	Hspg2	perlecan (heparan sulfate proteoglycan 2)
10575993	1.64	6430548M08Rik	RIKEN cDNA 6430548M08 gene
10492021	1.64	Postn A630052E07 Rik	periostin, osteoblast specific factor RIKEN cDNA A630052E07 gene
10369615	1.64	Srgn	serglycin
10358617	1.64	Hmcn1	hemicentin 1
10541555	1.64	Clec4a1	C-type lectin domain family 4, member a1
10389214	1.64	Ccl9	chemokine (C-C motif) ligand 9
10530029	1.64	Lgi2	leucine-rich repeat LGI family, member 2
10607950	1.64	G530011O06Rik	RIKEN cDNA G530011O06 gene
10604713	1.64	Arhgef6	Rac/Cdc42 guanine nucleotide exchange factor (GEF) 6
10460237	1.64	Unc93b1	unc-93 homolog B1 (C. elegans)
10448184	1.64	4930515G13Rik	RIKEN cDNA 4930515G13 gene
10587038	1.64	2410004A20Rik	RIKEN cDNA 2410004A20 gene
10371332	1.64	Aldh1l2	aldehyde dehydrogenase 1 family, member L2
10422628	1.64	Plcx3	phosphatidylinositol-specific phospholipase C, X domain containing 3
10459730	1.64	Me2	malic enzyme 2, NAD(+)-dependent, mitochondrial
10527158	1.64	Fscn1	fascin homolog 1, actin bundling protein (Strongylocentrotus purpuratus)
10409240	1.64	Sema4d	sema domain, immunoglobulin domain (Ig), transmembrane domain (TM) and short cytoplasmic domain, (semaphorin) 4D
10394770	1.64	Odc1	ornithine decarboxylase, structural 1
10362314	1.64	Ptprk	protein tyrosine phosphatase, receptor type, K
10517488	1.64	Ephb2	Eph receptor B2
10564849	1.64	2610034B18Rik	RIKEN cDNA 2610034B18 gene
10453026	1.64	Prkd3	protein kinase D3
10358613	1.64	Hmcn1	hemicentin 1
10527982	1.64	A330021E22Rik	RIKEN cDNA A330021E22 gene
10351658	1.63	Cd48	CD48 antigen
10410931	1.63	Vcan	versican

Transcripts Cluster Id	Fold change	Gene Symbol	Gene description
10404521	1.63	Bphl	biphenyl hydrolase-like (serine hydrolase, breast epithelial mucin-associated antigen)
10409202	1.63		
10507908	1.63	Fhl3	four and a half LIM domains 3
10386758	1.63	Slc5a10 Fam83g	solute carrier family 5 (sodium/glucose cotransporter), member 10 family with sequence similarity 83, member G
10575917	1.63	Wfdc1	WAP four-disulfide core domain 1
10437552	1.63	AU021092	
10516046	1.63	Gm12877	predicted gene 12877
10376959	1.63	Elac2	elaC homolog 2 (E. coli)
10436865	1.63	Ifngr2	interferon gamma receptor 2
10407955	1.63	Epdr1	ependymin related protein 1 (zebrafish)
10584700	1.63	Dpagt1	dolichyl-phosphate (UDP-N-acetylglucosamine) acetylglucosaminephosphotransferase 1 (GlcNAc-1-P transferase)
10484463	1.63	Serping1	serine (or cysteine) peptidase inhibitor, clade G, member 1
10425092	1.63	Cyth4	cytohesin 4
10392347	1.63	Pitpnc1	phosphatidylinositol transfer protein, cytoplasmic 1
10356880	1.63	St8sia4	ST8 alpha-N-acetyl-neuraminide alpha-2,8-sialyltransferase 4
10344725	1.63	Adhfe1	alcohol dehydrogenase, iron containing, 1
10377859	1.62	Pld2	phospholipase D2
10584891	1.62	Fxyd2	FXDYD domain-containing ion transport regulator 2
10529260	1.62	C330019G07Rik	RIKEN cDNA C330019G07 gene
10362073	1.62	Sgk1	serum/glucocorticoid regulated kinase 1
10360806	1.62	Capn2	calpain 2
10508770	1.62	Gm13033	prostaglandin-endoperoxide synthase 2 pseudogene
10507851	1.62	Pabpc4	poly(A) binding protein, cytoplasmic 4
10365640	1.62	Slc5a8	solute carrier family 5 (iodide transporter), member 8
10481011	1.62	Inpp5e Pmpca	inositol polyphosphate-5-phosphatase E peptidase (mitochondrial processing) alpha
10474596	1.62	Aven	apoptosis, caspase activation inhibitor
10417273	1.62	Esd	esterase D/formylglutathione hydrolase
10538138	1.62	Gimap1	GTPase, IMAP family member 1
10374406	1.62	Cnrip1 Plek	cannabinoid receptor interacting protein 1 pleckstrin
10491721	1.62	Spry1	sprouty homolog 1 (Drosophila)
10349953	1.62	Chit1	chitinase 1 (chitotriosidase)
10515797	1.62	Tmem125	transmembrane protein 125
10551666	1.62	Map4k1	mitogen-activated protein kinase kinase kinase kinase 1
10403871	1.62	Aoah	acyloxyacyl hydrolase
10576973	1.61	Col4a1	collagen, type IV, alpha 1
10505954	1.61	Tek	endothelial-specific receptor tyrosine kinase
10417048	1.61	Hs6st3	heparan sulfate 6-O-sulfotransferase 3
10472923	1.61	Ak3l1	adenylate kinase 3-like 1
10591094	1.61	Fat3	FAT tumor suppressor homolog 3 (Drosophila)
10509590	1.61	Pla2g2e	phospholipase A2, group IIE

Transcripts Cluster Id	Fold change	Gene Symbol	Gene description
10534102	1.61	Gusb	glucuronidase, beta
10402986	1.61		
10480249	1.61	Ptpla	protein tyrosine phosphatase-like (proline instead of catalytic arginine), member a
10492448	1.61	Ptx3	pentraxin related gene
10350506	1.61	Fam5c	family with sequence similarity 5, member C
10592106	1.61	Tirap	toll-interleukin 1 receptor (TIR) domain-containing adaptor protein
10584741	1.61	Slc37a4	solute carrier family 37 (glucose-6-phosphate transporter), member 4
10493692	1.61	Rab13	RAB13, member RAS oncogene family
10349118	1.61	Serpinb12	serine (or cysteine) peptidase inhibitor, clade B (ovalbumin), member 12
10447118	1.61	Gm9959	predicted gene 9959
10439276	1.61	Fam162a	family with sequence similarity 162, member A
10428443	1.61	Kcnc1	potassium channel, subfamily V, member 1
10386359	1.61	Guk1	guanylate kinase 1
10503098	1.61	Lyn	Yamaguchi sarcoma viral (v-yes-1) oncogene homolog
10410776	1.61		
10441017	1.61	Setd4	SET domain containing 4
10423503	1.61	Gm6624	predicted gene 6624
10386633	1.61	Gm16516	
10353729	1.61	Gm5415 4930444G 20Rik Gm9839	predicted gene 5415 RIKEN cDNA 4930444G20 gene predicted gene 9839
10395005	1.61	Kidins220	kinase D-interacting substrate 220
10551803	1.61	Zfp568	zinc finger protein 568
10393387	1.61	Jmjd6	jumonji domain containing 6
10519747	1.61	Sema3e	sema domain, immunoglobulin domain (Ig), short basic domain, secreted, (semaphorin) 3E
10460177	1.60	Mtl5	metallothionein-like 5, testis-specific (tesmin)
10347790	1.60		
10470283	1.60	Egfl7	EGF-like domain 7
10518207	1.60		
10467508	1.60	Blnc	B-cell linker
10357590	1.60	Dyrk3	dual-specificity tyrosine-(Y)-phosphorylation regulated kinase 3
10498707	1.60	Slitrk3	SLIT and NTRK-like family, member 3
10518570	1.60	Pgd	phosphogluconate dehydrogenase
10535189	1.60	Mad111	mitotic arrest deficient 1-like 1
10497399	1.60	Pde7a	phosphodiesterase 7A
10582275	1.60	Slc7a5	solute carrier family 7 (cationic amino acid transporter, y+ system), member 5
10393936	1.60	Cbr2	carbonyl reductase 2
10476042	1.60	Tgm3	transglutaminase 3, E polypeptide
10584561	1.60	9030425E11Rik	RIKEN cDNA 9030425E11 gene

Transcripts Cluster Id	Fold change	Gene Symbol	Gene description
10408629	1.60	1300014I06Rik	RIKEN cDNA 1300014I06 gene
10568982	1.60	BC066028	
10583732	1.60	Ldlr	low density lipoprotein receptor
10439955	1.60	Fam55c	family with sequence similarity 55, member C
10375787	1.60	Olf1378	olfactory receptor 1378
10376988	1.60	Zkscan6	zinc finger with KRAB and SCAN domains 6
10374236	1.60	Upp1	uridine phosphorylase 1
10364346	1.60	Dnmt3l	DNA (cytosine-5-)-methyltransferase 3-like
10464949	1.60	Pacs1	phosphofurin acidic cluster sorting protein 1
10358038	1.60	Rnpep	arginyl aminopeptidase (aminopeptidase B)
10483110	1.60	Ifih1	interferon induced with helicase C domain 1
10558001	1.60	Inpp5f	inositol polyphosphate-5-phosphatase F
10468869	1.60	Prdx3	peroxiredoxin 3
10481272	1.60	1700007K13Rik	RIKEN cDNA 1700007K13 gene
10518108	1.60	Tmem51	transmembrane protein 51
10390059	1.60	Xylt2	xylosyltransferase II
10542156	1.60	Clec2d	C-type lectin domain family 2, member d
10375331	1.60	Il12b	interleukin 12b
10371134	1.59	Gipc3	GIPC PDZ domain containing family, member 3
10570434	1.59	Ifitm1 Gm7676	interferon induced transmembrane protein 1 interferon induced transmembrane protein 1 pseudogene
10567335	1.59	Gde1	glycerophosphodiester phosphodiesterase 1
10450191	1.59	Btnl5	butyrophilin-like 5
10550877	1.59	Kcnn4	potassium intermediate/small conductance calcium-activated channel, subfamily N, member 4
10536294	1.59	Peg10	paternally expressed 10
10378793	1.59	Tmigd1	transmembrane and immunoglobulin domain containing 1
10544199	1.59	Dennd2a	DENN/MADD domain containing 2A
10549361	1.59	Tm7sf3	transmembrane 7 superfamily member 3
10505998	1.59	Fggy	FGGY carbohydrate kinase domain containing
10536353	1.59	Dlx6	distal-less homeobox 6
10478928	1.59	Tshz2	teashirt zinc finger family member 2
10399579	1.59	1700030C10Rik	RIKEN cDNA 1700030C10 gene
10465494	1.59	1700019N12Rik	RIKEN cDNA 1700019N12 gene
10544858	1.59	9130019P16Rik Chn2	RIKEN cDNA 9130019P16 gene chimerin (chimaerin) 2
10360028	1.59	Fcgr2b	Fc receptor, IgG, low affinity IIb
10568221	1.59	Sephs2	selenophosphate synthetase 2
10373651	1.59	Olf1814	olfactory receptor 814
10375443	1.59	Havcr2	hepatitis A virus cellular receptor 2
10369154	1.59	Man1a	mannosidase 1, alpha
10367641	1.59	Mthfd1l	methylenetetrahydrofolate dehydrogenase (NADP+ dependent) 1-like
10582958	1.59	Gucyl1a2	guanylate cyclase 1, soluble, alpha 2
10538142	1.59	Gimap5	GTPase, IMAP family member 5

Transcripts Cluster Id	Fold change	Gene Symbol	Gene description
10348963	1.59	Ctnnap5b	contactin associated protein-like 5B
10458906	1.59	Ppic	peptidylprolyl isomerase C
10403825	1.59		
10369844	1.59	Bicc1	bicaudal C homolog 1 (Drosophila)
10597182	1.59	Nbeal2	neurobeachin-like 2
10366886	1.58	Arhgap9	Rho GTPase activating protein 9
10389601	1.58	1200011M11Rik	RIKEN cDNA 1200011M11 gene
10504761	1.58	LOC641050	
10535174	1.58	Tmem184a	transmembrane protein 184a
10568962	1.58	Olf532	olfactory receptor 532
10560873	1.58	Tex101	testis expressed gene 101
10399228	1.58	Gm6742	predicted gene 6742
10405280	1.58	Arl10	ADP-ribosylation factor-like 10
10445746	1.58	Trem1	triggering receptor expressed on myeloid cells 1
10478698	1.58	Eya2	eyes absent 2 homolog (Drosophila)
10490653	1.58	Gmeb2	glucocorticoid modulatory element binding protein 2
10542872	1.58	Rps4y2	ribosomal protein S4, Y-linked 2
10538890	1.58	LOC641050	
10413059	1.58	Vcl	vinculin
10605256	1.58	Flna	filamin, alpha
10346882	1.58	Adam23 LOC100046035	a disintegrin and metallopeptidase domain 23 similar to ADAM23
10366712	1.58	Ppm1h	protein phosphatase 1H (PP2C domain containing)
10470948	1.58	Slc39a1	solute carrier family 39 (zinc transporter), member 1
10555401	1.58		
10574471	1.58	Cmtm3	CKLF-like MARVEL transmembrane domain containing 3
10355246	1.58	Acadl	acyl-Coenzyme A dehydrogenase, long-chain
10490559	1.58	Chrna4	cholinergic receptor, nicotinic, alpha polypeptide 4
10504753	1.58	LOC641050	
10443009	1.58	Ergic1	endoplasmic reticulum-golgi intermediate compartment (ERGIC) 1
10403076	1.58		
10495869	1.58	Tram111	translocation associated membrane protein 1-like 1
10351390	1.58	Tada1	transcriptional adaptor 1
10351603	1.58	Arhgap30	Rho GTPase activating protein 30
10501164	1.58	Csf1	colony stimulating factor 1 (macrophage)
10492426	1.58	Acsf2	acyl-CoA synthetase family member 2
10527455	1.57	Cpsf4	cleavage and polyadenylation specific factor 4
10474619	1.57	Fmn1	formin 1
10401160	1.57	Tmem229b	transmembrane protein 229B
10360479	1.57	Cep170	centrosomal protein 170
10413932	1.57	E130203B14Rik	RIKEN cDNA E130203B14 gene
10604763	1.57	Arpc1b Gm5637	actin related protein 2/3 complex, subunit 1B predicted pseudogene 5637
10416419	1.57	Gm10847	predicted gene 10847

Transcripts Cluster Id	Fold change	Gene Symbol	Gene description
10405749	1.57		
10405820	1.57	1810034E14Rik	RIKEN cDNA 1810034E14 gene
10407946	1.57	Stard3nl	STARD3 N-terminal like
10586491	1.57	Dapk2	death-associated protein kinase 2
10526191	1.57	Gatsl2	GATS protein-like 2
10383833	1.57	Ccdc157	coiled-coil domain containing 157
10454984	1.57	Wdr55 Dnd1	WD repeat domain 55 dead end homolog 1 (zebrafish)
10494804	1.57	Casq2	calsequestrin 2
10389581	1.57	Ypel2	yippee-like 2 (Drosophila)
10578045	1.57	Nrg1	neuregulin 1
10489429	1.57	Wfdc5	WAP four-disulfide core domain 5
10544452	1.57	Fam115c	family with sequence similarity 115, member C
10383813	1.57	1700020C11Rik	RIKEN cDNA 1700020C11 gene
10430166	1.57	Apol7a	apolipoprotein L 7a
10607792	1.57	Glr2	glycine receptor, alpha 2 subunit
10424853	1.57	Brp16	brain protein 16
10576581	1.57	Kcnk1	potassium channel, subfamily K, member 1
10554693	1.57	Stard5	StAR-related lipid transfer (START) domain containing 5
10415472	1.57	Rnf17	ring finger protein 17
10511721	1.57		
10518069	1.57	Efhd2	EF hand domain containing 2
10451559	1.57	1700001C19Rik AI661453	RIKEN cDNA 1700001C19 gene expressed sequence AI661453
10426284	1.57	Acr	acrosin prepropeptide
10508614	1.57	Fabp3	fatty acid binding protein 3, muscle and heart
10556812	1.57	Lyrml	LYR motif containing 1
10462912	1.57	Lgi1	leucine-rich repeat LGI family, member 1
10563685	1.57	Ptpn5	protein tyrosine phosphatase, non-receptor type 5
10593497	1.57	Zc3h12c	zinc finger CCCH type containing 12C
10495097	1.57	Adora3	adenosine A3 receptor
10472501	1.56	Lass6	LAG1 homolog, ceramide synthase 6
10371784	1.56	Nr1h4	nuclear receptor subfamily 1, group H, member 4
10501235	1.56	Gstm4	glutathione S-transferase, mu 4
10488926	1.56	Mmp24 BC029722	matrix metalloproteinase 24 cDNA sequence BC029722
10573916	1.56	Irx6	Iroquois related homeobox 6 (Drosophila)
10541642	1.56	Vmn2r26 Gm6423	vomer nasal 2, receptor 26 predicted gene 6423
10382435	1.56	Gprc5c	G protein-coupled receptor, family C, group 5, member C
10588836	1.56	Gmppb	GDP-mannose pyrophosphorylase B
10433797	1.56	Prkdc	protein kinase, DNA activated, catalytic polypeptide
10345482	1.56	Cnnm4	cyclin M4
10578401	1.56	Zfp42	zinc finger protein 42
10354247	1.56	Fhl2	four and a half LIM domains 2
10508376	1.56	Trim62	tripartite motif-containing 62
10587284	1.56	Elov15	ELOVL family member 5, elongation of long chain fatty acids (yeast)

Transcripts Cluster Id	Fold change	Gene Symbol	Gene description
10444886	1.56	2300002M23Rik	RIKEN cDNA 2300002M23 gene
10527441	1.56	Arpc1b	actin related protein 2/3 complex, subunit 1B
10534531	1.56	Ywhag	tyrosine 3-monooxygenase/tryptophan 5-monooxygenase activation protein, gamma polypeptide
10567316	1.56	Tmc7	transmembrane channel-like gene family 7
10349138	1.56	Serpinb11	serine (or cysteine) peptidase inhibitor, clade B (ovalbumin), member 11
10399470	1.56	Trib2	tribbles homolog 2 (Drosophila)
10521243	1.56	Grk4	G protein-coupled receptor kinase 4
10361906	1.56	Il22ra2	interleukin 22 receptor, alpha 2
10503083	1.56		
10408227	1.56	Hfe	hemochromatosis
10442098	1.56	Fpr3 Fpr2	formyl peptide receptor 3 formyl peptide receptor 2
10506058	1.56	Inadl	InaD-like (Drosophila)
10462535	1.56	Pten	phosphatase and tensin homolog
10606728	1.56	Gm10344	predicted gene 10344
10594825	1.56	Aqp9	aquaporin 9
10484371	1.56	Calclr	calcitonin receptor-like
10568873	1.56	Adam8	a disintegrin and metallopeptidase domain 8
10440550	1.56	Rnf160	ring finger protein 160
10496023	1.56	Casp6	caspase 6
10572449	1.56	Lsm4	LSM4 homolog, U6 small nuclear RNA associated (<i>S. cerevisiae</i>)
10394791	1.55		
10594988	1.55	Mapk6	mitogen-activated protein kinase 6
10390498	1.55	1700001P01Rik	RIKEN cDNA 1700001P01 gene
10453678	1.55	Zeb1	zinc finger E-box binding homeobox 1
10433597	1.55	Snx29	sorting nexin 29
10513362	1.55	Susd1	sushi domain containing 1
10582712	1.55	Egln1	EGL nine homolog 1 (<i>C. elegans</i>)
10368981	1.55	Lin28b	lin-28 homolog B (<i>C. elegans</i>)
10477717	1.55	Procr	protein C receptor, endothelial
10463836	1.55	Gsto1	glutathione S-transferase omega 1
10360349	1.55	Cadm3	cell adhesion molecule 3
10399457	1.55	Gm6644 Akr1b3	aldo-keto reductase family 1, member B3-like aldo-keto reductase family 1, member B3 (aldose reductase)
10556546	1.55	Calcb	calcitonin-related polypeptide, beta
10565794	1.55	Serpinh1	serine (or cysteine) peptidase inhibitor, clade H, member 1
10516024	1.55	Tmco2	transmembrane and coiled-coil domains 2
10557862	1.55	Itgam	integrin alpha M
10596403	1.55	Gm7455	predicted gene 7455
10537169	1.55	Akr1b7	aldo-keto reductase family 1, member B7
10522009	1.55	Pgm1	phosphoglucomutase 1
10580010	1.55	Pkn1	protein kinase N1
10374842	1.55	Ccdc88a	coiled coil domain containing 88A

Transcripts Cluster Id	Fold change	Gene Symbol	Gene description
10420780	1.55	Tdh	L-threonine dehydrogenase
10375578	1.55	Flt4	FMS-like tyrosine kinase 4
10585186	1.55	1600029D21Rik	RIKEN cDNA 1600029D21 gene
10562192	1.55	Fxyd5	FXYP domain-containing ion transport regulator 5
10450892	1.55	Olf113	olfactory receptor 113
10546884	1.55	Lhfp14	lipoma HMGIC fusion partner-like protein 4
10406031	1.55	Lpcat1	lysophosphatidylcholine acyltransferase 1
10380260	1.55	Trim25	tripartite motif-containing 25
10391005	1.55	Krt36	keratin 36
10507040	1.55	Spata6	spermatogenesis associated 6
10436414	1.55	Olf203	olfactory receptor 203
10604076	1.55	Snora69	small nucleolar RNA, H/ACA box 69
10370303	1.55	Adarb1	adenosine deaminase, RNA-specific, B1
10502156	1.55	Ccdc109b	coiled-coil domain containing 109B
10535378	1.55	D430018E03Rik	RIKEN cDNA D430018E03 gene
10570627	1.55	Defb7	defensin beta 7
10499864	1.55	Gm7165	predicted gene 7165
10606658	1.54	Trmt2b	TRM2 tRNA methyltransferase 2 homolog B (<i>S. cerevisiae</i>)
10365983	1.54	Lum	lumican
10423821	1.54	Baalc	brain and acute leukemia, cytoplasmic
10453759	1.54	Gm10554	predicted gene 10554
10564667	1.54	Ntrk3	neurotrophic tyrosine kinase, receptor, type 3
10508860	1.54	Slc9a1	solute carrier family 9 (sodium/hydrogen exchanger), member 1
10561128	1.54	Cyp2s1	cytochrome P450, family 2, subfamily s, polypeptide 1
10582464	1.54		
10439138	1.54	Kalrn	kalirin, RhoGEF kinase
10389010	1.54	5730455P16Rik	RIKEN cDNA 5730455P16 gene
10494795	1.54	Nhlh2	nescient helix loop helix 2
10364502	1.54	Palm	paralemmin
10530692	1.54	Kdr	kinase insert domain protein receptor
10461934	1.54	Trpm6	transient receptor potential cation channel, subfamily M, member 6
10584488	1.54	Olf943 Olf944	olfactory receptor 943 olfactory receptor 944
10518075	1.54	Fhad1	forkhead-associated (FHA) phosphopeptide binding domain 1
10513957	1.54	Ptprd	protein tyrosine phosphatase, receptor type, D
10538658	1.54	Herc3	hect domain and RLD 3
10345824	1.54	Il18rap	interleukin 18 receptor accessory protein
10546454	1.54	Adamts9	a disintegrin-like and metalloproteinase (reprolysin type) with thrombospondin type 1 motif, 9
10598023	1.54		
10422028	1.54	Tbc1d4	TBC1 domain family, member 4
10364130	1.54	Zfp280b	zinc finger protein 280B
10404612	1.54	Rreb1	ras responsive element binding protein 1

Transcripts Cluster Id	Fold change	Gene Symbol	Gene description
10447649	1.54	Fndc1 LOC100039091	fibronectin type III domain containing 1 similar to fibronectin type III domain containing 1
10544875	1.54	Scrn1	secernin 1
10479230	1.54	Phactr3	phosphatase and actin regulator 3
10358559	1.54	Hmcn1	hemicentin 1
10460371	1.54	Ptprcap Rps6kb2	protein tyrosine phosphatase, receptor type, C polypeptide-associated protein ribosomal protein S6 kinase, polypeptide 2
10580085	1.54	Dcaf15	DDB1 and CUL4 associated factor 15
10358585	1.54	Hmcn1	hemicentin 1
10420114	1.54	Tgm1	transglutaminase 1, K polypeptide
10551011	1.54	Dmrct2	doublesex and mab-3 related transcription factor like family C2
10385384	1.54	Nipal4	NIPA-like domain containing 4
10586017	1.54	Uaca	uveal autoantigen with coiled-coil domains and ankyrin repeats
10385776	1.54	Tcf7	transcription factor 7, T-cell specific
10361265	1.54	Mir205	microRNA 205
10510167	1.54	Gm13051 Zfp534 Gm13235 Gm13151 Gm13225	predicted gene 13051 zinc finger protein 534 predicted gene 13235 predicted gene 13151 predicted gene 13225
10581479	1.54	Smpd3	sphingomyelin phosphodiesterase 3, neutral
10532907	1.54	Hnf1a	HNF1 homeobox A
10383168	1.54		
10352292	1.54	G370120E05Rik	RIKEN cDNA G370120E05 gene
10520111	1.53	Nup12	nucleoporin like 2
10523853	1.53	Lpcat2b	lysophosphatidylcholine acyltransferase 2B
10601874	1.53	Tceal3 Tceal6 Tceal5	transcription elongation factor A (SII)-like 3 transcription elongation factor A (SII)-like 6 transcription elongation factor A (SII)-like 5
10577757	1.53	Adam9	a disintegrin and metallopeptidase domain 9 (meltrin gamma)
10380976	1.53	Gsdma	gasdermin A
10490854	1.53	Gm13051 Zfp534 Gm13235 Gm13151 Gm13225	predicted gene 13051 zinc finger protein 534 predicted gene 13235 predicted gene 13151 predicted gene 13225
10601659	1.53	Srpx2	sushi-repeat-containing protein, X-linked 2
10606554	1.53	Nap113	nucleosome assembly protein 1-like 3
10581299	1.53	Agrp	agouti related protein
10518674	1.53	Rbp7	retinol binding protein 7, cellular
10398414	1.53	Mir381	microRNA 381
10410695	1.53	Rhobtb3	Rho-related BTB domain containing 3
10528036	1.53		
10360130	1.53	Nit1	nitrilase 1
10534120	1.53	Asl	argininosuccinate lyase
10535025	1.53	Got2	glutamate oxaloacetate transaminase 2, mitochondrial
10544133	1.53	Parp12	poly (ADP-ribose) polymerase family, member 12
10348299	1.53	5830472F04Rik	RIKEN cDNA 5830472F04 gene

Transcripts Cluster Id	Fold change	Gene Symbol	Gene description
10358563	1.53	Hmcn1	hemicentin 1
10569985	1.53	BC003267	
10478133	1.53	Actr5	ARP5 actin-related protein 5 homolog (yeast)
10535586	1.53	Smurf1	SMAD specific E3 ubiquitin protein ligase 1
10385926	1.53	Cdc42se2	CDC42 small effector 2
10560983	1.53	Dedd2	death effector domain-containing DNA binding protein 2
10446423	1.53	5430411C19Rik	RIKEN cDNA 5430411C19 gene
10571399	1.53	Zdhhc2	zinc finger, DHHC domain containing 2
10398453	1.53	Ppp2r5c	protein phosphatase 2, regulatory subunit B (B56), gamma isoform
10387274	1.53	Gucy2e	guanylate cyclase 2e
10506213	1.53	Ube2u	ubiquitin-conjugating enzyme E2U (putative)
10493309	1.53	Rit1	Ras-like without CAAX 1
10601416	1.53	P2ry10	purinergic receptor P2Y, G-protein coupled 10
10358982	1.53	Mr1	major histocompatibility complex, class I-related
10464672	1.53	Ssh3	slingshot homolog 3 (Drosophila)
10440141	1.53	Olfr177 Olfr176	olfactory receptor 177 olfactory receptor 176
10386058	1.53	Sparc	secreted acidic cysteine rich glycoprotein
10344897	1.53	Sulf1	sulfatase 1
10518735	1.53	Spsb1	splA/ryanodine receptor domain and SOCS box containing 1
10583324	1.53		
10446928	1.53	Ltbp1	latent transforming growth factor beta binding protein 1
10545401	1.53	Vamp5	vesicle-associated membrane protein 5
10371607	1.53	Dram1	DNA-damage regulated autophagy modulator 1
10365716	1.53	Ikbip	IKBKB interacting protein
10381096	1.53	Igfbp4	insulin-like growth factor binding protein 4
10353438	1.53	Tram2	translocating chain-associating membrane protein 2
10450145	1.53	Psmb9	proteasome (prosome, macropain) subunit, beta type 9 (large multifunctional peptidase 2)
10528480	1.53	Gm6560	predicted gene 6560
10536505	1.53	Met	met proto-oncogene
10581013	1.53	Cdh11	cadherin 11
10509811	1.53	Tas1r2	taste receptor, type 1, member 2
10572897	1.53	Hmox1	heme oxygenase (decycling) 1
10437970	1.53	2310008H04Rik	RIKEN cDNA 2310008H04 gene
10349157	1.53	Serpinb2	serine (or cysteine) peptidase inhibitor, clade B, member 2
10388430	1.53	Serpinf1	serine (or cysteine) peptidase inhibitor, clade F, member 1
10353750	1.53	Bag2	BCL2-associated athanogene 2
10474516	1.53	Olfr1302	olfactory receptor 1302
10368175	1.53	Pde7b	phosphodiesterase 7B
10497358	1.52	Sirpb1b Sirpb1a LO C100038947 LOC6 30976 LOC641195	signal-regulatory protein beta 1B signal-regulatory protein beta 1A signal-regulatory protein beta 1-like similar to SIRP beta 1 isoform 3 similar to SIRP beta 1 isoform 1
10540679	1.52	Il17re	interleukin 17 receptor E

Transcripts Cluster Id	Fold change	Gene Symbol	Gene description
10485070	1.52	Mdk	midkine
10353844	1.52	Neurl3	neuralized homolog 3 homolog (Drosophila)
10601565	1.52		
10463716	1.52	Cnm2	cyclin M2
10461878	1.52	Prune2	prune homolog 2 (Drosophila)
10567428	1.52	Dnahc3	dynein, axonemal, heavy chain 3
10466147	1.52	1700025F22Rik	RIKEN cDNA 1700025F22 gene
10581327	1.52	E130303B06Rik	RIKEN cDNA E130303B06 gene
10495967	1.52	Tifa	TRAF-interacting protein with forkhead-associated domain
10523231	1.52	Art3	ADP-ribosyltransferase 3
10525833	1.52	Atp6v0a2	ATPase, H ⁺ transporting, lysosomal V0 subunit A2
10573483	1.52	Prdx2	peroxiredoxin 2
10604867	1.52	Mir471	microRNA 471
10358519	1.52	Hmcn1	hemicentin 1
10515574	1.52	St3gal3	ST3 beta-galactoside alpha-2,3-sialyltransferase 3
10551155	1.52	Lipe	lipase, hormone sensitive
10478048	1.52	Lbp	lipopolysaccharide binding protein
10552570	1.52	Klk1b11	kallikrein 1-related peptidase b11
10405464	1.52	Grk6	G protein-coupled receptor kinase 6
10352703	1.52	Mfsd7b A230020J2 1Rik	major facilitator superfamily domain containing 7B RIKEN cDNA A230020J21 gene
10354979	1.52	Als2 Mpp4	amyotrophic lateral sclerosis 2 (juvenile) homolog (human) membrane protein, palmitoylated 4 (MAGUK p55 subfamily member 4)
10397416	1.52	1700019E19Rik	RIKEN cDNA 1700019E19 gene
10490502	1.52	Tcf15	transcription factor-like 5 (basic helix-loop-helix)
10458303	1.52	Eescr	endothelial cell-specific chemotaxis regulator
10507110	1.52		
10455054	1.52	Pcdhb3	protocadherin beta 3
10560672	1.52	Cblc	Casitas B-lineage lymphoma c
10455112	1.52	Pcdhb17	protocadherin beta 17
10562308	1.52	Abpg	androgen binding protein gamma
10455259	1.52	Arhgap26	Rho GTPase activating protein 26
10371387	1.52	Ckap4	cytoskeleton-associated protein 4
10444298	1.52	H2-Eb1	histocompatibility 2, class II antigen E beta
10433494	1.52	Nubp1	nucleotide binding protein 1
10542093	1.52	Nrip2	nuclear receptor interacting protein 2
10369842	1.52	Bicc1	bicaudal C homolog 1 (Drosophila)
10586306	1.51	Igdcc4	immunoglobulin superfamily, DCC subclass, member 4
10525677	1.51	Hip1r	huntingtin interacting protein 1 related
10352916	1.51	Mir29b- 2 A330023F24Rik	microRNA 29b-2 RIKEN cDNA A330023F24 gene
10381588	1.51	Grn	granulin
10348670	1.51	Rnpepl1	arginyl aminopeptidase (aminopeptidase B)-like 1
10379044	1.51	Rab34	RAB34, member of RAS oncogene family

Transcripts Cluster Id	Fold change	Gene Symbol	Gene description
10510178	1.51	Gm13051 Zfp534 Gm13251 Gm13152 Rex2 Gm13138 Gm13235 Gm13151 Gm13225 Gm13212	predicted gene 13051 zinc finger protein 534 predicted gene 13251 predicted gene 13152 reduced expression 2 predicted gene 13138 predicted gene 13235 predicted gene 13151 predicted gene 13225 predicted gene 13212
10486284	1.51	Ndufaf1	NADH dehydrogenase (ubiquinone) 1 alpha subcomplex, assembly factor 1
10522411	1.51	Cwh43	cell wall biogenesis 43 C-terminal homolog (S. cerevisiae)
10455199	1.51	Rel2 Fchsd1	RELT-like 2 FCH and double SH3 domains 1
10373583	1.51	Gdf11	growth differentiation factor 11
10419448	1.51	Olf732	olfactory receptor 732
10454807	1.51	Snora74a	small nucleolar RNA, H/ACA box 74A
10397853	1.51	Rin3	Ras and Rab interactor 3
10543067	1.51	Asns	asparagine synthetase
10473847	1.51	Acp2 Ddb2	acid phosphatase 2, lysosomal damage specific DNA binding protein 2
10488636	1.51	Defb26	defensin beta 26
10431935	1.51	Amigo2 Fam113b	adhesion molecule with Ig like domain 2 family with sequence similarity 113, member B
10385932	1.51	Lym7	LYR motif containing 7
10405918	1.51	Rsl1	regulator of sex limited protein 1
10532346	1.51	P2rx2	purinergic receptor P2X, ligand-gated ion channel, 2
10487605	1.51	F830045P16Rik	RIKEN cDNA F830045P16 gene
10390103	1.51	Pdk2	pyruvate dehydrogenase kinase, isoenzyme 2
10526153	1.51	Tyw1	tRNA-yW synthesizing protein 1 homolog (S. cerevisiae)
10555736	1.51	Olf558	olfactory receptor 558
10600698	1.51	5430427O19Rik	RIKEN cDNA 5430427O19 gene
10430510	1.51	Tmem184b	transmembrane protein 184b
10375145	1.51	Lcp2	lymphocyte cytosolic protein 2
10467826	1.51	Hpse2	heparanase 2
10558345	1.51	Dock1	dedicator of cytokinesis 1
10396476	1.51	Rhoj	ras homolog gene family, member J
10405851	1.51	Gm10775	predicted gene 10775
10350349	1.51	Dennd1b	DENN/MADD domain containing 1B
10565811	1.51	Snord15b	small nucleolar RNA, C/D box 14B
10392825	1.51	Gm11711 CIm3	predicted gene 11711 CMRF-35-like molecule 3
10552090	1.51	Abpe	androgen binding protein epsilon
10492428	1.51	Tiparp 4931440P22Rik	TCDD-inducible poly(ADP-ribose) polymerase RIKEN cDNA 4931440P22 gene
10368845	1.51	2410017P07Rik	RIKEN cDNA 2410017P07 gene
10444841	1.51	H2-Q10	histocompatibility 2, Q region locus 10
10578950	1.51	Gm10664	predicted gene 10664
10606071	1.51	Ercc6l	excision repair cross-complementing rodent repair deficiency complementation group 6 - like

Transcripts Cluster Id	Fold change	Gene Symbol	Gene description
10596207	1.51	Uba5	ubiquitin-like modifier activating enzyme 5
10409616	1.51	Spock1	sparc/osteonectin, cwcv and kazal-like domains proteoglycan 1
10596465	1.51	Acy1	aminoacylase 1
10449236	1.51	Nme4	non-metastatic cells 4, protein expressed in
10536762	1.51	Snd1	staphylococcal nuclease and tudor domain containing 1
10386110	1.51	Hand1	heart and neural crest derivatives expressed transcript 1
10506822	1.51	Orc1l	origin recognition complex, subunit 1-like (<i>S.cerevisiae</i>)
10508829	1.51	Map3k6	mitogen-activated protein kinase kinase kinase 6
10523168	1.51	Epgn	epithelial mitogen
10388747	1.51	BC017647	
10370242	1.50	Pcbp3	poly(rC) binding protein 3
10428579	1.50	Ext1	exostoses (multiple) 1
10576532	1.50	Tsnax	translin-associated factor X
10565241	1.50	1700026D08Rik	RIKEN cDNA 1700026D08 gene
10540952	1.50	Ift122	intraflagellar transport 122 homolog (<i>Chlamydomonas</i>)
10494781	1.50	Igsf3	immunoglobulin superfamily, member 3
10526838	1.50	Got2	glutamate oxaloacetate transaminase 2, mitochondrial
10542949	1.50	Mir653	microRNA 653
10377265	1.50	Pik3r5	phosphoinositide-3-kinase, regulatory subunit 5, p101
10531518	1.50	A430089I19Rik BC061212 Gm10424 Gm3147 BC080696 LOC665755	RIKEN cDNA A430089I19 gene cDNA sequence BC061212 predicted gene 10424 predicted gene 3147 cDNA sequence BC080696 similar to CDNA sequence BC061212
10370376	1.50	Pfk1	phosphofructokinase, liver, B-type
10574694	1.50	Elmo3	engulfment and cell motility 3, ced-12 homolog (<i>C. elegans</i>)
10477032	1.50	5430405G05Rik	RIKEN cDNA 5430405G05 gene
10446013	1.50	Mpnd	MPN domain containing
10381260	1.50	Tubg2	tubulin, gamma 2
10501492	1.50	Hectd1 Gm5548	HECT domain containing 1 predicted pseudogene 5548
10360563	1.50	Smyd3	SET and MYND domain containing 3
10389522	-1.50	Rpl13a	ribosomal protein L13A
10557033	-1.50	Eef2k	eukaryotic elongation factor-2 kinase
10369413	-1.50	Sgpl1	sphingosine phosphate lyase 1
10585984	-1.50	Myo9a	myosin IXa
10461475	-1.50	Cpsf7	cleavage and polyadenylation specific factor 7
10410925	-1.50		
10554895	-1.51	Crebzf	CREB/ATF bZIP transcription factor
10575628	-1.51		
10542310	-1.51	Cdkn1b	cyclin-dependent kinase inhibitor 1B
10391577	-1.51	Hdac5	histone deacetylase 5
10394158	-1.51	Kif3c 1110002L01Rik	kinesin family member 3C RIKEN cDNA 1110002L01 gene
10481711	-1.51	Stxbp1	syntaxin binding protein 1
10580953	-1.51		

Transcripts Cluster Id	Fold change	Gene Symbol	Gene description
10352393	-1.51	Srp9	signal recognition particle 9
10547009	-1.51	Vgll4	vestigial like 4 (Drosophila)
10355264	-1.51	Gm10072	ribosomal protein L31 pseudogene
10499873	-1.51	Prr9	proline rich 9
10573344	-1.51	Mir27a	microRNA 27a
10432840	-1.51	Krt2	keratin 2
10348354	-1.52	Ugt1a9 Ugt1a1 Ugt1a5 Ugt1a10 Ugt1a2 Ugt1a6a Ugt1a7c Ugt1a6b	UDP glucuronosyltransferase 1 family, polypeptide A9 UDP glucuronosyltransferase 1 family, polypeptide A1 UDP glucuronosyltransferase 1 family, polypeptide A5 UDP glycosyltransferase 1 family, polypeptide A10 UDP glucuronosyltransferase 1 family, polypeptide A2 UDP glucuronosyltransferase 1 family, polypeptide A6A UDP glucuronosyltransferase 1 family, polypeptide A7C UDP glucuronosyltransferase 1 family, polypeptide A6B
10494664	-1.52	Wars2	tryptophanyl tRNA synthetase 2 (mitochondrial)
10528257	-1.52	Rsbn1l	round spermatid basic protein 1-like
10573803	-1.52	Cyld	cylindromatosis (turban tumor syndrome)
10493516	-1.52	Gm15417	predicted gene 15417
10385709	-1.52	C330016O10Rik D930048N14Rik	RIKEN cDNA C330016O10 gene RIKEN cDNA D930048N14 gene
10418038	-1.52	Zfp503	zinc finger protein 503
10563834	-1.52		
10419284	-1.52	Gm10101	predicted gene 10101
10432831	-1.52	Krt73	keratin 73
10399189	-1.52	Sp8	trans-acting transcription factor 8
10367118	-1.52		
10353002	-1.53		
10548727	-1.53	D230041D01Rik	RIKEN cDNA D230041D01 gene
10556640	-1.53	6330503K22Rik	RIKEN cDNA 6330503K22 gene
10585625	-1.53	Sin3a	transcriptional regulator, SIN3A (yeast)
10355227	-1.53	1110028C15Rik Rpe	RIKEN cDNA 1110028C15 gene ribulose-5-phosphate-3-epimerase
10394833	-1.53		
10590563	-1.53	Lars2	leucyl-tRNA synthetase, mitochondrial
10535389	-1.53	Rnf216	ring finger protein 216
10501690	-1.54	Slc35a3	solute carrier family 35 (UDP-N-acetylglucosamine (UDP-GlcNAc) transporter), member 3
10485213	-1.54	Cd82	CD82 antigen
10393125	-1.54	Mrpl38	mitochondrial ribosomal protein L38
10471080	-1.54	Usp20	ubiquitin specific peptidase 20
10477389	-1.54	Bpil3	bactericidal/permeability-increasing protein-like 3
10567407	-1.54	Thumpd1	THUMP domain containing 1
10407387	-1.54	Gm7120	predicted gene 7120
10601771	-1.54	Armex1	armadillo repeat containing, X-linked 1
10494007	-1.54	Them4	thioesterase superfamily member 4

Transcripts Cluster Id	Fold change	Gene Symbol	Gene description
10444008	-1.54	Zfp414	zinc finger protein 414
10367059	-1.54	BC089597	
10500272	-1.54	Gm129	predicted gene 129
10428328	-1.54	Slc25a32	solute carrier family 25, member 32
10400057	-1.54	Arl4a	ADP-ribosylation factor-like 4A
10588226	-1.54	Amotl2	angiomin-like 2
10492424	-1.54	Kcnab1	potassium voltage-gated channel, shaker-related subfamily, beta member 1
10495935	-1.54	4930422G04Rik	RIKEN cDNA 4930422G04 gene
10376507	-1.54	Zkscan17 4933439 C10Rik	zinc finger with KRAB and SCAN domains 17 RIKEN cDNA 4933439C10 gene
10568997	-1.54	Sirt3 Psm13	sirtuin 3 (silent mating type information regulation 2, homolog) 3 (S. cerevisiae) proteasome (prosome, macropain) 26S subunit, non-ATPase, 13
10406017	-1.54	Irx4	Iroquois related homeobox 4 (Drosophila)
10583392	-1.54		
10537501	-1.54	Tas2r108	taste receptor, type 2, member 108
10475804	-1.55	Gpat2	glycerol-3-phosphate acyltransferase 2, mitochondrial
10345967	-1.55	Bivm	basic, immunoglobulin-like variable motif containing
10472240	-1.55	Tanc1	tetratricopeptide repeat, ankyrin repeat and coiled-coil containing 1
10603659	-1.55	Med14	mediator complex subunit 14
10369901	-1.55	Rtdr1	rhabdoid tumor deletion region gene 1
10443007	-1.55	Neur11B	neuralized homolog 1B (Drosophila)
10448094	-1.55	Lnpep	leucyl/cystinyl aminopeptidase
10401192	-1.55	Zfyve26	zinc finger, FYVE domain containing 26
10452295	-1.55	Tubb4	tubulin, beta 4
10357870	-1.55	Pre1p	proline arginine-rich end leucine-rich repeat
10440534	-1.55	Adamt5	a disintegrin-like and metallopeptidase (reprolysin type) with thrombospondin type 1 motif, 5 (aggrecanase-2)
10445187	-1.55	Gm6084 Esp4	predicted gene 6084 exocrine gland-secreting peptide 4
10518132	-1.56	Prdm2	PR domain containing 2, with ZNF domain
10412828	-1.56		
10400157	-1.56	Nova1	neuro-oncological ventral antigen 1
10574532	-1.56	Ces2 BC015286	carboxylesterase 2 cDNA sequence BC015286
10366546	-1.56	Cpm	carboxypeptidase M
10434224	-1.56		
10426368	-1.56	Lrrk2	leucine-rich repeat kinase 2
10406817	-1.56	Enc1	ectodermal-neural cortex 1
10575763	-1.56	Gan	giant axonal neuropathy
10532765	-1.56		
10544477	-1.56	Nobox	NOBOX oogenesis homeobox
10600093	-1.56	Zfp185	zinc finger protein 185
10548905	-1.56	Eps8	epidermal growth factor receptor pathway substrate 8

Transcripts Cluster Id	Fold change	Gene Symbol	Gene description
10426894	-1.56	Gm10035 Mettl7a2 Mettl7a1 Higd1c	predicted gene 10035 methyltransferase like 7A2 methyltransferase like 7A1 HIG1 domain family, member 1C
10364413	-1.56	Olf1355	olfactory receptor 1355
10477557	-1.57	Zfp341	zinc finger protein 341
10520048	-1.57	Mll5	myeloid/lymphoid or mixed-lineage leukemia 5
10427816	-1.57	Pdzd2	PDZ domain containing 2
10469613	-1.57	Thns11	threonine synthase-like 1 (bacterial)
10466972	-1.57	Ranbp6	RAN binding protein 6
10446553	-1.57	Epb4.113	erythrocyte protein band 4.1-like 3
10573624	-1.57	4921524J17Rik	RIKEN cDNA 4921524J17 gene
10484777	-1.57	Olf1216	olfactory receptor 1216
10550487	-1.58	Mill1	MHC I like leukocyte 1
10399314	-1.58	Mfsd2b	major facilitator superfamily domain containing 2B
10493910	-1.58	Gm4858	predicted gene 4858
10493500	-1.58	Dcst2	DC-STAMP domain containing 2
10484555	-1.58	Olf1037	olfactory receptor 1037
10458560	-1.58	Fgf1	fibroblast growth factor 1
10352554	-1.58		
10533462	-1.58	Rad9b	RAD9 homolog B (<i>S. cerevisiae</i>)
10462554	-1.58	Lipk	lipase, family member K
10589846	-1.58		
10552294	-1.58	4930433I11Rik	RIKEN cDNA 4930433I11 gene
10487154	-1.58	Secisbp2l	SECIS binding protein 2-like
10398297	-1.58	Mir345	microRNA 345
10500570	-1.58	Hao2	hydroxyacid oxidase 2
10566709	-1.58	Nlrp10	NLR family, pyrin domain containing 10
10403273	-1.58	Asb13	ankyrin repeat and SOCS box-containing 13
10591978	-1.59	Ntm	neurotrimin
10581664	-1.59	Il34	interleukin 34
10367519	-1.59	Olf808	olfactory receptor 808
10532301	-1.59		
10586011	-1.59	Larp6	La ribonucleoprotein domain family, member 6
10382339	-1.59	Gm16487	predicted gene 16487
10401181	-1.59	Rdh11	retinol dehydrogenase 11
10584537	-1.59	Olf986	olfactory receptor 986
10536472	-1.59	Mdfic	MyoD family inhibitor domain containing
10576460	-1.59	Capn9	calpain 9
10475051	-1.59	Mga	MAX gene associated
10545742	-1.59	Cd207	CD207 antigen
10407876	-1.59	5033411D12Rik	RIKEN cDNA 5033411D12 gene
10526427	-1.59	Dtx2	deltex 2 homolog (<i>Drosophila</i>)
10495549	-1.60	Dbt	dihydrolipoamide branched chain transacylase E2
10354649	-1.60	Pgap1	post-GPI attachment to proteins 1
10385239	-1.60	Mat2b	methionine adenosyltransferase II, beta

Transcripts Cluster Id	Fold change	Gene Symbol	Gene description
10526754	-1.60	Ap4m1 Mcm7	adaptor-related protein complex AP-4, mu 1 minichromosome maintenance deficient 7 (<i>S. cerevisiae</i>)
10570837	-1.60	Slc20a2	solute carrier family 20, member 2
10475578	-1.60	Ctxn2	cortixin 2
10368534	-1.60	Ncoa7	nuclear receptor coactivator 7
10362633	-1.60	Rev3l	REV3-like, catalytic subunit of DNA polymerase zeta RAD54 like (<i>S. cerevisiae</i>)
10372844	-1.60	Rassf3	Ras association (RalGDS/AF-6) domain family member 3
10354389	-1.60	Slc39a10	solute carrier family 39 (zinc transporter), member 10
10545869	-1.60	Cml3	camello-like 3
10427277	-1.60	Hoxc11	homeobox C11
10521832	-1.60	Pi4k2b	phosphatidylinositol 4-kinase type 2 beta
10519693	-1.61	Sema3d	sema domain, immunoglobulin domain (Ig), short basic domain, secreted, (semaphorin) 3D
10360684	-1.61	Ephx1	epoxide hydrolase 1, microsomal
10601878	-1.61	Tceal1	transcription elongation factor A (SII)-like 1
10371446	-1.61	Bpil2	bactericidal/permeability-increasing protein-like 2
10570379	-1.61	Grk1	G protein-coupled receptor kinase 1
10417769	-1.61	Gm2897 Gm10406 Gm3512 Gm10021 ENSMUSG00000063277	predicted gene 2897 predicted gene 10406 predicted gene 3512 predicted gene 10021 predicted gene, ENSMUSG00000063277
10473450	-1.62	Olf998	olfactory receptor 998
10532310	-1.62	4930522L14Rik 2310001H12Rik	RIKEN cDNA 4930522L14 gene RIKEN cDNA 2310001H12 gene
10571647	-1.62	4933411K20Rik	RIKEN cDNA 4933411K20 gene
10383109	-1.62	Card14 Sgsh	caspace recruitment domain family, member 14 N-sulfoglucosamine sulfohydrolase (sulfamidase)
10532305	-1.62	4930522L14Rik 2310001H12Rik	RIKEN cDNA 4930522L14 gene RIKEN cDNA 2310001H12 gene
10495173	-1.62	4933421E11Rik	RIKEN cDNA 4933421E11 gene
10405942	-1.62	Gm10037	predicted gene 10037
10598757	-1.62	Gpr82	G protein-coupled receptor 82
10443912	-1.63	Zfp472	zinc finger protein 472
10567086	-1.63	Cyp2r1	cytochrome P450, family 2, subfamily r, polypeptide 1
10498166	-1.63		
10402730	-1.63	Ppp1r13b	protein phosphatase 1, regulatory (inhibitor) subunit 13B
10399337	-1.63	Klhl29	kelch-like 29 (<i>Drosophila</i>)
10478401	-1.63	Ttpal	tocopherol (alpha) transfer protein-like
10485747	-1.64	4930430A15Rik	RIKEN cDNA 4930430A15 gene
10496192	-1.64	Tacr3	tachykinin receptor 3
10589494	-1.64	Cspg5	chondroitin sulfate proteoglycan 5
10474229	-1.64	Cd59a Cd59b	CD59a antigen CD59b antigen
10529815	-1.64		
10474274	-1.64	Ccdc73	coiled-coil domain containing 73

Transcripts Cluster Id	Fold change	Gene Symbol	Gene description
10497971	-1.64	Sc11	sodium channel and clathrin linker 1
10442769	-1.64		
10419578	-1.64	Ndr2	N-myc downstream regulated gene 2
10553537	-1.64	Luzp2	leucine zipper protein 2
10590182	-1.64	Exog	endo/exonuclease (5'-3'), endonuclease G-like
10601404	-1.65	Gm5127	predicted gene 5127
10580382	-1.65	Neto2	neuropilin (NRP) and tolloid (TLL)-like 2
10574023	-1.65	Mt2	metallothionein 2
10437443	-1.65	5730403B10Rik H mox2	RIKEN cDNA 5730403B10 gene heme oxygenase (decycling) 2
10593918	-1.66	Ppcdc	phosphopantothienoylcysteine decarboxylase
10492774	-1.66	LOC633371	similar to dachsous 2 isoform 2
10369388	-1.66	Unc5b	unc-5 homolog B (C. elegans)
10607012	-1.66	Col4a6	collagen, type IV, alpha 6
10534395	-1.66	Cldn4	claudin 4
10464601	-1.66		
10464391	-1.67	Emx2	empty spiracles homolog 2 (Drosophila)
10515090	-1.67	Cdkn2c	cyclin-dependent kinase inhibitor 2C (p18, inhibits CDK4)
10513774	-1.67		
10602925	-1.67	Phka2	phosphorylase kinase alpha 2
10465379	-1.67	Snx15	sorting nexin 15
10439542	-1.67	Zdhhc23	zinc finger, DHHC domain containing 23
10513437	-1.67	Mup11 Mup2 Mup10 Mup8 Mup13 Mu p7 LOC100189605 LOC100048885 Mu p9	major urinary protein 11 major urinary protein 2 major urinary protein 10 major urinary protein 1 major urinary protein 8 major urinary protein 13 major urinary protein 7 major urinary protein 17 major urinary protein LOC100048885 major urinary protein 9
10604656	-1.67	Xlr	X-linked lymphocyte-regulated complex
10498309	-1.67	Pfn2	profilin 2
10396952	-1.67	Ttc9	tetratricopeptide repeat domain 9
10513455	-1.67	Mup2 Mup11 Mup10 Mup7 Mup8 Mup13 LOC100189605 LOC100048885 Mu p9 Mup12	major urinary protein 2 major urinary protein 11 major urinary protein 1 major urinary protein 10 major urinary protein 7 major urinary protein 8 major urinary protein 13 major urinary protein 17 major urinary protein LOC100048885 major urinary protein 9 major urinary protein 12
10411215	-1.67	Crhbp	corticotropin releasing hormone binding protein
10348376	-1.67	Heatr7b1	HEAT repeat containing 7B1
10447317	-1.67	Epas1	endothelial PAS domain protein 1
10394676	-1.67		
10408767	-1.68	Slc35b3	solute carrier family 35, member B3
10389797	-1.68	Stxbp4	syntaxin binding protein 4
10564631	-1.68	Slco3a1	solute carrier organic anion transporter family, member 3a1
10585972	-1.68	Myo9a	myosin IXa
10410341	-1.68	Zfp87	zinc finger protein 87

Transcripts Cluster Id	Fold change	Gene Symbol	Gene description
10513428	-1.68	Mup2 Mup11 Mup10 Mup7 Mup13 Mu p8 LOC100189605 LOC100048885 Mu p9	major urinary protein 2 major urinary protein 11 major urinary protein 1 major urinary protein 10 major urinary protein 7 major urinary protein 13 major urinary protein 8 major urinary protein 17 major urinary protein LOC100048885 major urinary protein 9
10375263	-1.68	Gm9972	predicted gene 9972
10488256	-1.69	Ovol2	ovo-like 2 (Drosophila)
10530130	-1.69	Rell1	RELT-like 1
10541246	-1.69	Il17ra	interleukin 17 receptor A
10507218	-1.69	Mknk1	MAP kinase-interacting serine/threonine kinase 1
10504916	-1.69		
10377569	-1.69	Fxr2	fragile X mental retardation, autosomal homolog 2
10542662	-1.69	Abcc9 5330439B14 Rik	ATP-binding cassette, sub-family C (CFTR/MRP), member 9 RIKEN cDNA 5330439B14 gene
10575160	-1.70	Nfat5	nuclear factor of activated T-cells 5
10525030	-1.70	Tbx5	T-box 5
10368199	-1.70	Myb	myeloblastosis oncogene
10461093	-1.70	Pla2g16	phospholipase A2, group XVI
10458913	-1.70	Cep120	centrosomal protein 120
10585162	-1.70	Gm4894	predicted gene 4894
10528476	-1.70		
10574511	-1.70	BC015286	
10426891	-1.71	Mettl7a1	methyltransferase like 7A1
10439766	-1.71	Pvrl3	poliovirus receptor-related 3
10590073	-1.71	Vill	villin-like
10489127	-1.72	Rbl1	retinoblastoma-like 1 (p107)
10442087	-1.72	Ncrna00085	non-protein coding RNA 85
10383853	-1.72	Hormad2	HORMA domain containing 2
10439321	-1.72	Slc15a2	solute carrier family 15 (H+/peptide transporter), member 2
10469571	-1.72	Otud1	OTU domain containing 1
10562731	-1.73		
10467102	-1.73	Rnls	renalase, FAD-dependent amine oxidase
10473708	-1.73	Agbl2	ATP/GTP binding protein-like 2
10390950	-1.73	Gm11564	predicted gene 11564
10364153	-1.74	Pcnt Gm9744	pericentrin (kendrin) predicted gene 9744
10516064	-1.74	Mfsd2a	major facilitator superfamily domain containing 2A
10600604	-1.74	Dmd	dystrophin, muscular dystrophy
10588419	-1.74	Aste1	asteroid homolog 1 (Drosophila)
10529285	-1.75	Nkx1-1	NK1 transcription factor related, locus 1 (Drosophila)
10598863	-1.75	Rgn	regucalcin
10487238	-1.75	Hdc	histidine decarboxylase
10505705	-1.75	Sh3gl2	SH3-domain GRB2-like 2
10372503	-1.75	Lgr5	leucine rich repeat containing G protein coupled receptor 5
10462140	-1.75	Dock8	dedicator of cytokinesis 8
10472235	-1.75	Dapl1	death associated protein-like 1

Transcripts Cluster Id	Fold change	Gene Symbol	Gene description
10410743	-1.76	Ankrd32	ankyrin repeat domain 32
10384423	-1.76	Cobl	cordon-bleu
10360920	-1.76	Tgfb2	transforming growth factor, beta 2
10595165	-1.76		
10579776	-1.76	Arhgap10	Rho GTPase activating protein 10
10410321	-1.77	Zfp874	zinc finger protein 874
10440694	-1.77	Krtap8-2	keratin associated protein 8-2
10355225	-1.78	Gm10558	predicted gene 10558
10495416	-1.78	Vav3	vav 3 oncogene
10497958	-1.78	1700034I23Rik	RIKEN cDNA 1700034I23 gene
10548681	-1.78		
10466800	-1.78	Pgm5 E030010A14 Rik	phosphoglucomutase 5 RIKEN cDNA E030010A14 gene
10592705	-1.78	Pou2f3	POU domain, class 2, transcription factor 3
10457836	-1.79	Nol4	nucleolar protein 4
10574584	-1.79		
10427606	-1.79	Skp2	S-phase kinase-associated protein 2 (p45)
10357660	-1.79	Mfsd4	major facilitator superfamily domain containing 4
10513420	-1.80	Mup7 Mup1 Mup10 Mup2 Mup8 Mup1 3 LOC100189605 L OC100048885 Mup 9 Mup12	major urinary protein 7 major urinary protein 1 major urinary protein 10 major urinary protein 2 major urinary protein 8 major urinary protein 13 major urinary protein 17 major urinary protein LOC100048885 major urinary protein 9 major urinary protein 12
10416004	-1.80	Zfp395	zinc finger protein 395
10423745	-1.81	Spag1	sperm associated antigen 1
10524234	-1.81	Galnt9	UDP-N-acetyl-alpha-D-galactosamine:polypeptide N-acetylgalactosaminyltransferase 9
10485261	-1.81	Accsl	1-aminocyclopropane-1-carboxylate synthase homolog (Arabidopsis)(non-functional)-like
10443926	-1.82	Zfp563	zinc finger protein 563
10422022	-1.82	Gm10843	predicted gene 10843
10494388	-1.82	Hist2h2be	histone cluster 2, H2be
10456754	-1.82	Gm10532	predicted gene 10532
10581917	-1.83	Tmem231	transmembrane protein 231
10367041	-1.83	Rdh9	retinol dehydrogenase 9
10379524	-1.84	Ccl11	chemokine (C-C motif) ligand 11
10345016	-1.85	Tcfap2b	transcription factor AP-2 beta
10528567	-1.85	Atg9b	ATG9 autophagy related 9 homolog B (S. cerevisiae)
10411226	-1.85	F2r11	coagulation factor II (thrombin) receptor-like 1
10441093	-1.86	Erg	avian erythroblastosis virus E-26 (v-ets) oncogene related
10461051	-1.86	5730409K12Rik	RIKEN cDNA 5730409K12 gene
10557399	-1.86	Sbk1	SH3-binding kinase 1
10391043	-1.87	Krt9	keratin 9
10598032	-1.87		
10588642	-1.87	Npr12	nitrogen permease regulator-like 2 (S. cerevisiae)

Transcripts Cluster Id	Fold change	Gene Symbol	Gene description
10494114	-1.87	Selenbp1 Selenbp2	selenium binding protein 1 selenium binding protein 2
10403283	-1.87	Calm5	calmodulin 5
10597854	-1.88	Ccdc13	coiled-coil domain containing 13
10438592	-1.89	Liph	lipase, member H
10560618	-1.89	Apoc1	apolipoprotein C-I
10512067	-1.89	Ddx58	DEAD (Asp-Glu-Ala-Asp) box polypeptide 58
10450874	-1.90	Olf101	olfactory receptor 101
10568792	-1.92	Stk32c	serine/threonine kinase 32C
10480414	-1.92	Enkur	enkurin, TRPC channel interacting protein
10422822	-1.94	Lifr	leukemia inhibitory factor receptor
10379736	-1.94	1100001G20Rik	RIKEN cDNA 1100001G20 gene
10515201	-1.95	Cyp4b1	cytochrome P450, family 4, subfamily b, polypeptide 1
10347186	-1.96		
10565840	-1.96	Neu3	neuraminidase 3
10554712	-1.96	2610206C17Rik	RIKEN cDNA 2610206C17 gene
10574560	-1.96	2310038E17Rik	RIKEN cDNA 2310038E17 gene
10439742	-1.96		
10447921	-1.98		
10583432	-1.98		
10505568	-1.99	Frmd3	FERM domain containing 3
10371201	-2.01	Ncln	nicalin homolog (zebrafish)
10450957	-2.02	Cenpq	centromere protein Q
10606235	-2.02	Zdhhc15	zinc finger, DHHC domain containing 15
10553004	-2.04	Hsd17b14	hydroxysteroid (17-beta) dehydrogenase 14
10408693	-2.05	F13a1	coagulation factor XIII, A1 subunit
10507798	-2.06	Mycl1	v-myc myelocytomatosis viral oncogene homolog 1, lung carcinoma derived (avian)
10448247	-2.06	Zfp40	zinc finger protein 40
10474381	-2.07	Kif18a	kinesin family member 18A
10357954	-2.07	Ppp1r12b	protein phosphatase 1, regulatory (inhibitor) subunit 12B
10542129	-2.08	Clec2g	C-type lectin domain family 2, member g
10389786	-2.08	Hlf	hepatic leukemia factor
10406538	-2.11		
10346116	-2.14		
10441339	-2.14	A630089N07Rik	RIKEN cDNA A630089N07 gene
10483046	-2.15	Dpp4	dipeptidylpeptidase 4
10477815	-2.15	Phf20	PHD finger protein 20
10467206	-2.16	Ppp1r3c	protein phosphatase 1, regulatory (inhibitor) subunit 3C
10402347	-2.18	Ifi2712a	interferon, alpha-inducible protein 27 like 2A
10569344	-2.19	Igf2	insulin-like growth factor 2
10549842	-2.20	Zfp667	zinc finger protein 667
10349147	-2.21	Serpinb7	serine (or cysteine) peptidase inhibitor, clade B, member 7
10549534	-2.24		
10544932	-2.25	Inmt	indolethylamine N-methyltransferase
10605938	-2.25	P2ry4	pyrimidinergic receptor P2Y, G-protein coupled, 4

Transcripts Cluster Id	Fold change	Gene Symbol	Gene description
10535017	-2.26	Gal3st4	galactose-3-O-sulfotransferase 4
10438738	-2.27	Bcl6	B-cell leukemia/lymphoma 6
10430818	-2.27	Tnfrsf13c	tumor necrosis factor receptor superfamily, member 13c
10455721	-2.28	Snaip	synuclein, alpha interacting protein (synphilin)
10493803	-2.35	S100a3	S100 calcium binding protein A3
10401684	-2.36	Angel1	angel homolog 1 (Drosophila)
10386652	-2.36	Aldh3a2	aldehyde dehydrogenase family 3, subfamily A2
10606600	-2.38	Pcdh19	protocadherin 19
10511363	-2.39	Penk	preproenkephalin
10559931	-2.41	Vmn2r43 Vmn2r33 Vmn2r35 Vmn2r50 Vmn2r39	vomeronasal 2, receptor 43 vomeronasal 2, receptor33 vomeronasal 2, receptor 35 vomeronasal 2, receptor 50 vomeronasal 2, receptor 39
10507804	-2.42	Trit1	tRNA isopentenyltransferase 1
10479752	-2.42	Olah	oleoyl-ACP hydrolase
10355310	-2.43	Gm8840	predicted gene 8840
10377790	-2.44	Slc16a11	solute carrier family 16 (monocarboxylic acid transporters), member 11
10419073	-2.45	Tspan14	tetraspanin 14
10420596	-2.46	Tnfrsf19	tumor necrosis factor receptor superfamily, member 19
10515134	-2.53	Skint9	selection and upkeep of intraepithelial T cells 9
10497501	-2.57	Naaladl2	N-acetylated alpha-linked acidic dipeptidase-like 2
10469138	-2.59	4930412O13Rik	RIKEN cDNA 4930412O13 gene
10496438	-2.66	Adh1	alcohol dehydrogenase 1 (class I)
10569038	-2.68	Ano9	anoctamin 9
10495675	-2.70	F3	coagulation factor III
10524955	-2.75	Tesc	tescalcin
10497490	-2.88	Naaladl2	N-acetylated alpha-linked acidic dipeptidase-like 2
10494085	-2.92	Selenbp2	selenium binding protein 2
10381738	-2.93	Wnt3	wingless-related MMTV integration site 3
10574617	-3.09	Ces8	carboxylesterase 8 (putative)
10390923	-3.30	Krtap4-2	keratin associated protein 4-2
10409276	-3.45		
10575702	-3.87	Clec3a	C-type lectin domain family 3, member a
10569335	-4.20	H19	
10465424	-4.37	Nrxn2 Gm14964	neurexin II predicted gene 14964
10606178	-4.46	Xist	inactive X specific transcripts
10492628	-4.58	Serpini1	serine (or cysteine) peptidase inhibitor, clade I, member 1
10436768	-4.92	Gm10061	predicted gene 10061
10440651	-4.93	Krtap24-1	keratin associated protein 24-1
10436773	-6.33	Gm7735 Gm9789	predicted gene 7735 predicted gene 9789
10436766	-7.10	Krtap20- 2 Gm6358 1110057 P08Rik	keratin associated protein 20-2 predicted gene 6358 RIKEN cDNA 1110057P08 gene