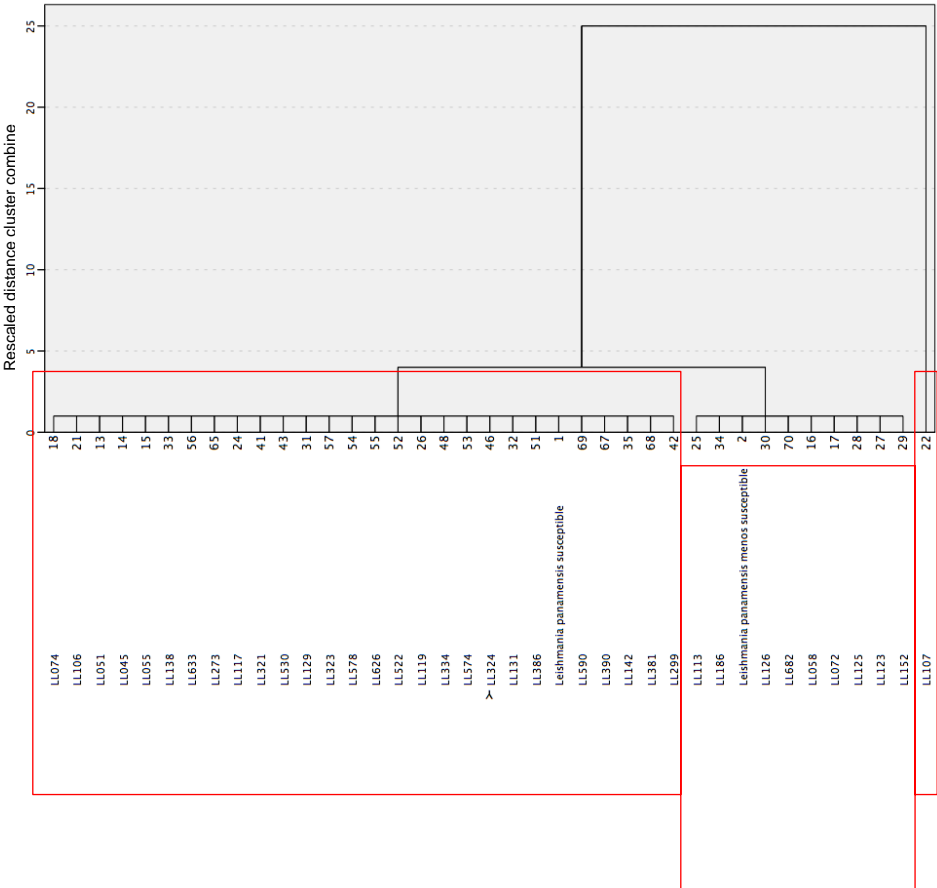
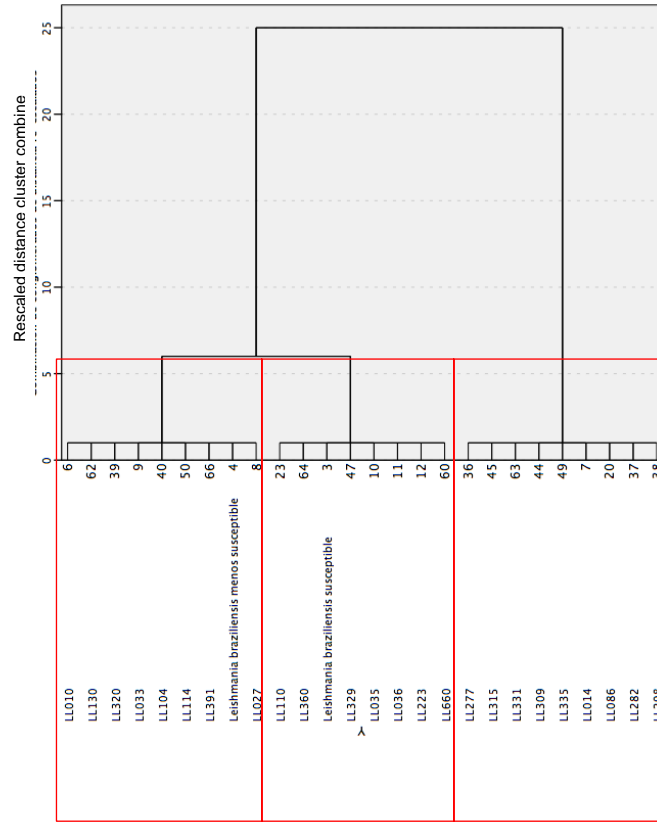


**S1 Fig. Dendrogram of the susceptibility classification of Leishmania strains obtained using the EC50 values and percent reductions.** The clinical isolates were classified into different groups according to the degree of *in vitro* susceptibility to AmB using Ward's method of hierarchical classification and the EC50 values and percent reductions. A) *L. (V.) panamensis*, B) *L. (V.) braziliensis* C) *L. (V.) guyanensis*.

**A) *L. (V.) panamensis***



**B) *L. (V.) braziliensis***



### C) *L. (V.) guyanensis*

