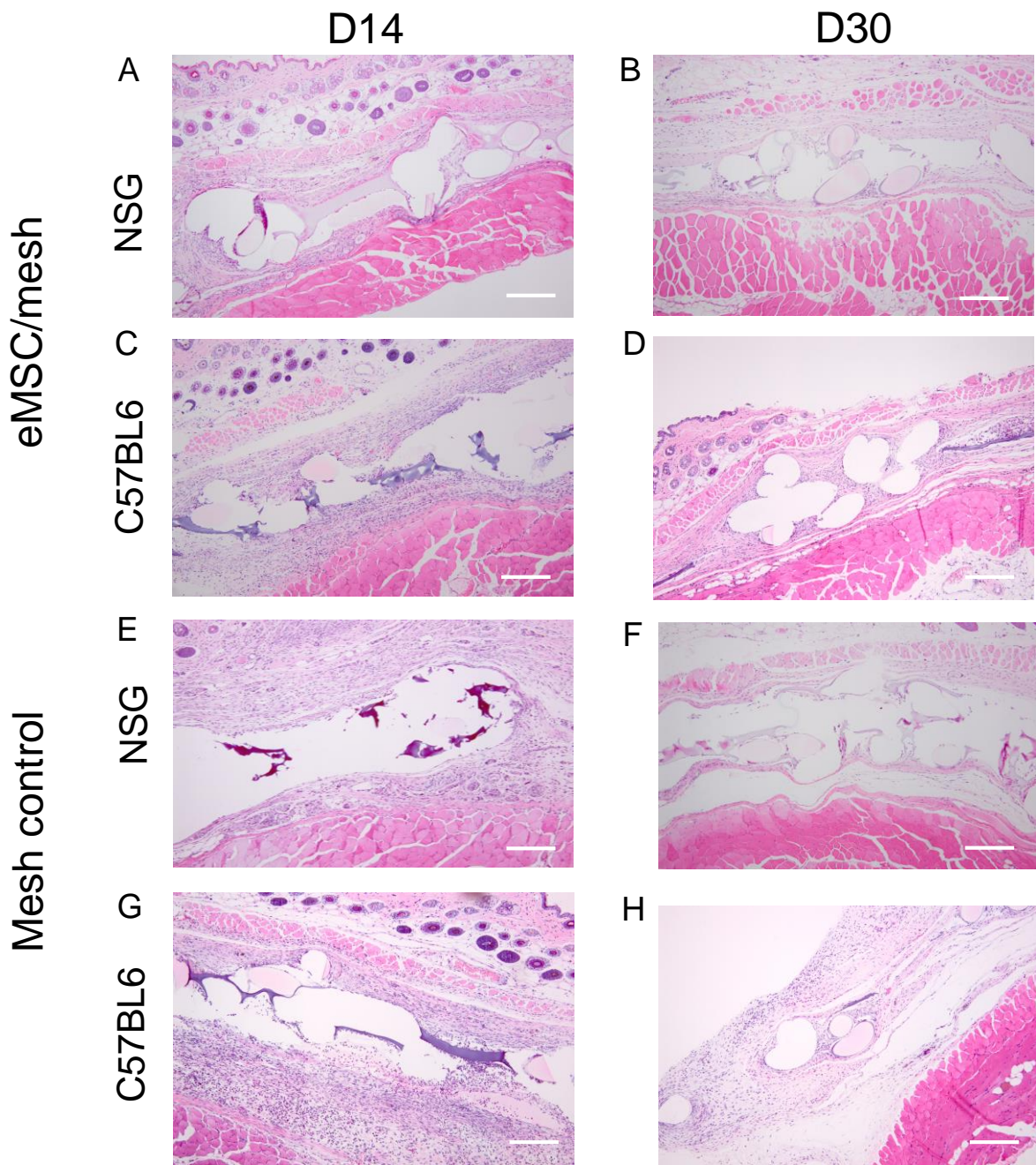


Endometrial Mesenchymal Stem/Stromal Cells Modulate the Macrophage Response to Implanted Polyamide/Gelatin Composite Mesh in Immunocompromised and Immunocompetent Mice

Darzi S^{a,b}, Deane JA^{a,b}, Nold CA^a, Edwards S^c, Gough DJ^a,
Mukherjee S^a, Gurung S^{a,b}, Tan KS^a, Vashi AV^c, Werkmeister JA^{a,b,c},
Gargett CE^{a,b*}

- a. The Ritchie Centre, Hudson Institute of Medical Research, 27–31 Wright Street, Clayton, Victoria 3168, Australia
- b. Department of Obstetrics and Gynaecology, Monash University, Clayton, Victoria 3168, Australia,
- c. CSIRO Manufacturing, Bayview Avenue, Clayton, Victoria 3169, Australia



Supplementary Figure 1. H&E staining of explanted tissue at day 14 and 30.

(A, B) H&E staining on explanted tissue from NSG mice and (C, D) from C57BL6 mice, implanted with eMSC/mesh. (E, F) H&E staining on explanted tissue from NSG mice and (G, H) from C57BL6 mice implanted with mesh only. Scale Bars 200 μ m.