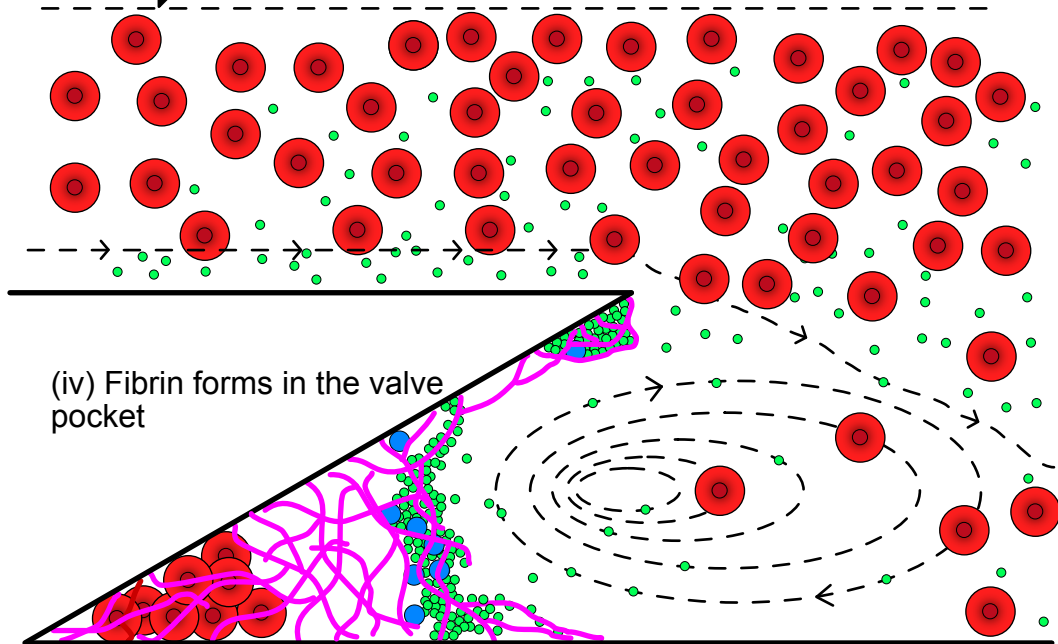


Flow  
Direction

(i) Red blood cells  
marginate platelets to  
valve-entering streamlines



(iv) Fibrin forms in the valve  
pocket

(iii) Red blood cells  
become trapped in the  
valve pocket

(v) Platelets  
adhere to fibrin  
and become  
activated  
through GPIIb/IIIa

(ii) Primary recirculation vortex  
includes red blood cells and  
platelets that can escape to  
bulk flow or valve pocket

Red blood cell

Streamline

Platelet

Activated Platelet

Fibrin