

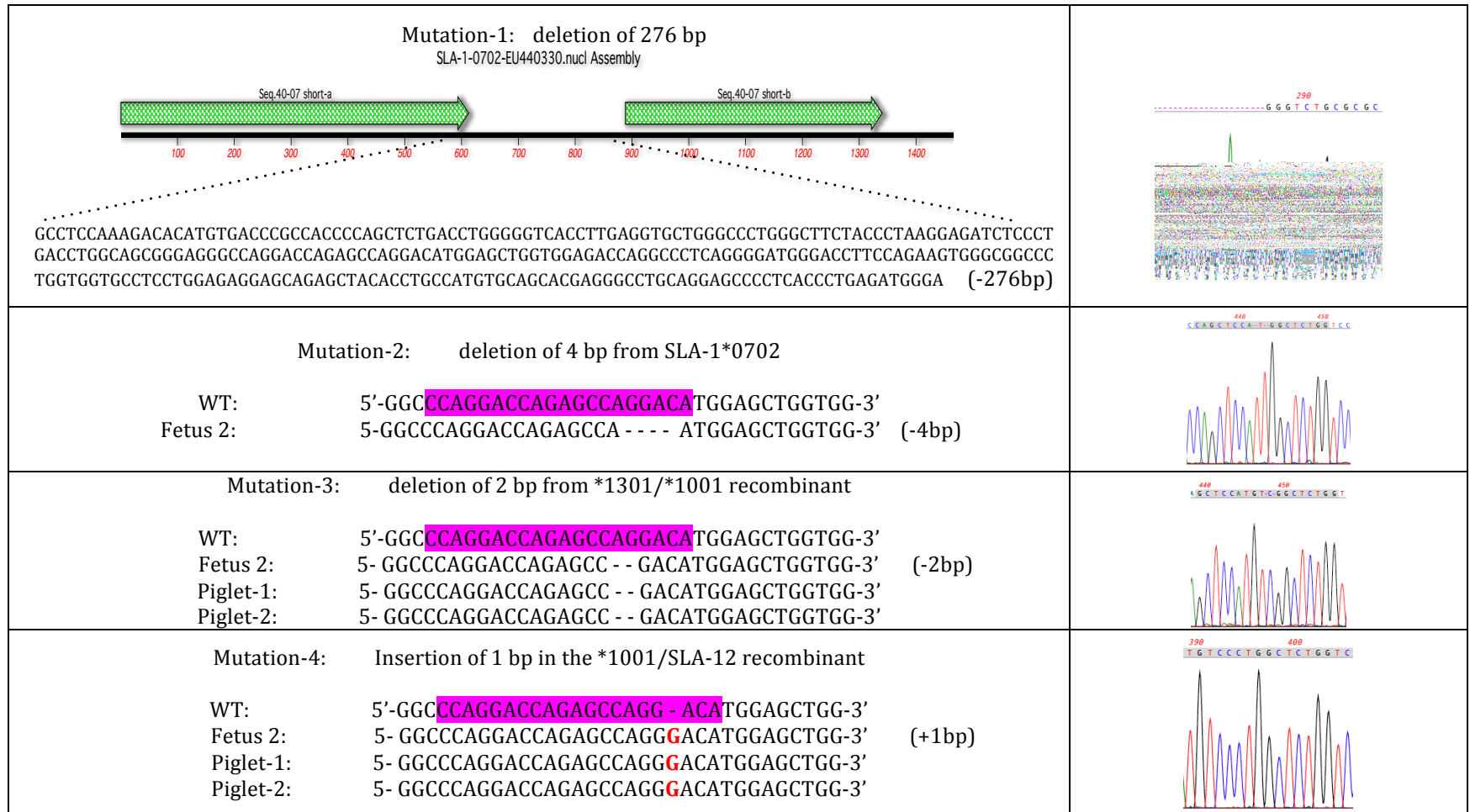
Supplementary Figure 1: Primer List

A) Primers cloned into pX330 to generate exon 4-specific gRNA

gRNA Name	Primers Sequence
A	5'-CCAGGACCAGAGCCAGGACA-3' 3'-TGT CCTGGCTCTGGTCCTGG-5'
B	5'-GAGACCAGGCCCTCAGGGGA-3' 3'-TCCCCTGAGGGCCTGGTCTC-5'
C	5'-CCAGAAGTGGGCGGCCCTGG-3' 3'-CCAGGGCCGCCCACTTCTGG-5'

B) Primers used to amplify SLA cDNA

Locus	Allele (Accession Number)	Coding Sequence (5'-3')	Amplicon Size (bases)
SLA-1	0702 (EU440330.1)	F: ATG GGG CCT GGA GCC CTC TTC R: TCA GTC CCC ACA AGG CAG	1109
SLA-1	1201 (EU440335.1)	F: ATG GGG CCT GGA GCC CTC TTC R: TCA GTC CCC ACA AGG CAG C	1109
SLA-1	1301 (EU440336.1)	F: ATG GGG CCT GGA GCC CTC TTC R: GGA TTC ACA AAG TGG GAC	1147
SLA-2	0202 (EU432081.1)	F: ATG CGG GTC AGG GGC CCT CAA G R: TCA GTC CCC ACA AGG CAG C	1118
SLA-2	1001 (EU432084.1)	F: ATG CGG GTC AGG GGC CCT CAA G R: TCA GTC CCC ACA AGG CAG C	1118
SLA-3	0402 (EU432092.1)	F: ATG GGG CCC CGA GCC CTC GTT R: TTG GTC CCC ACA AGG CAG C	1106
SLA-3	0502 (EU432094.1)	F: ATG GGG CCC CGA GCC CTC GTC CT R: TCA GTC CCC ACA AGG CAG C	1109



Supplementary Figure 2: Electropherogram revealing insertions and deletions in SLA cDNA. The purple box highlights the gRNA target.