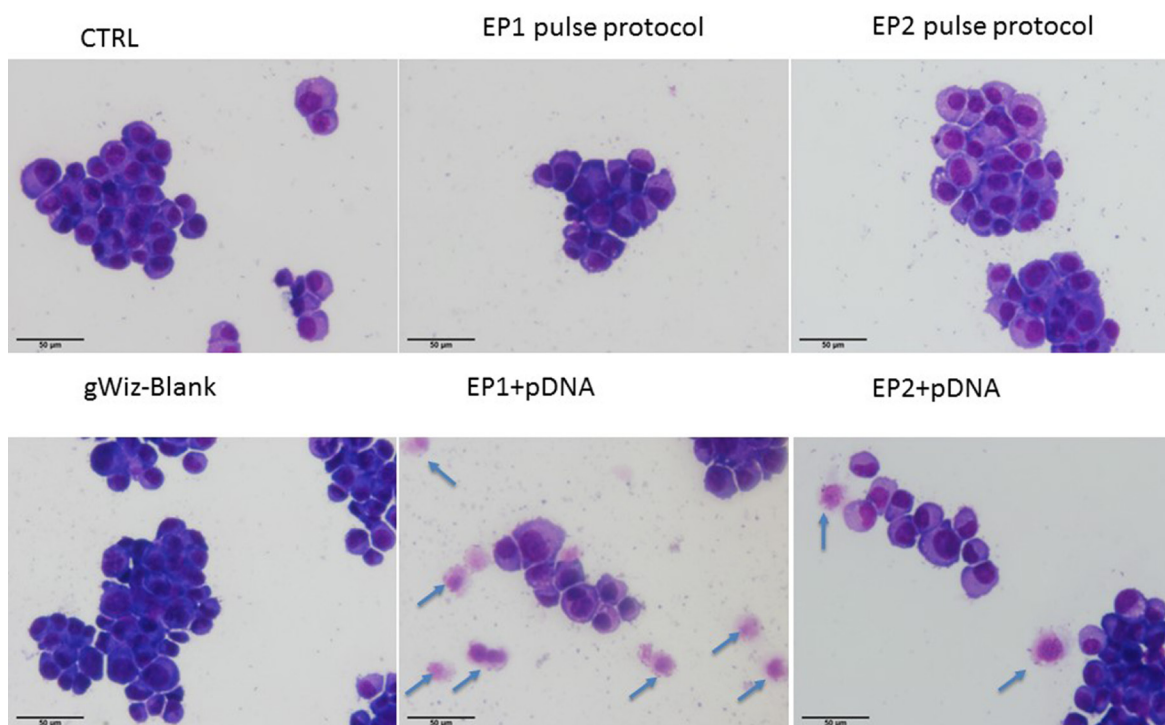


Tumor cell death after electrotransfer of plasmid DNA is associated with cytosolic DNA sensor upregulation

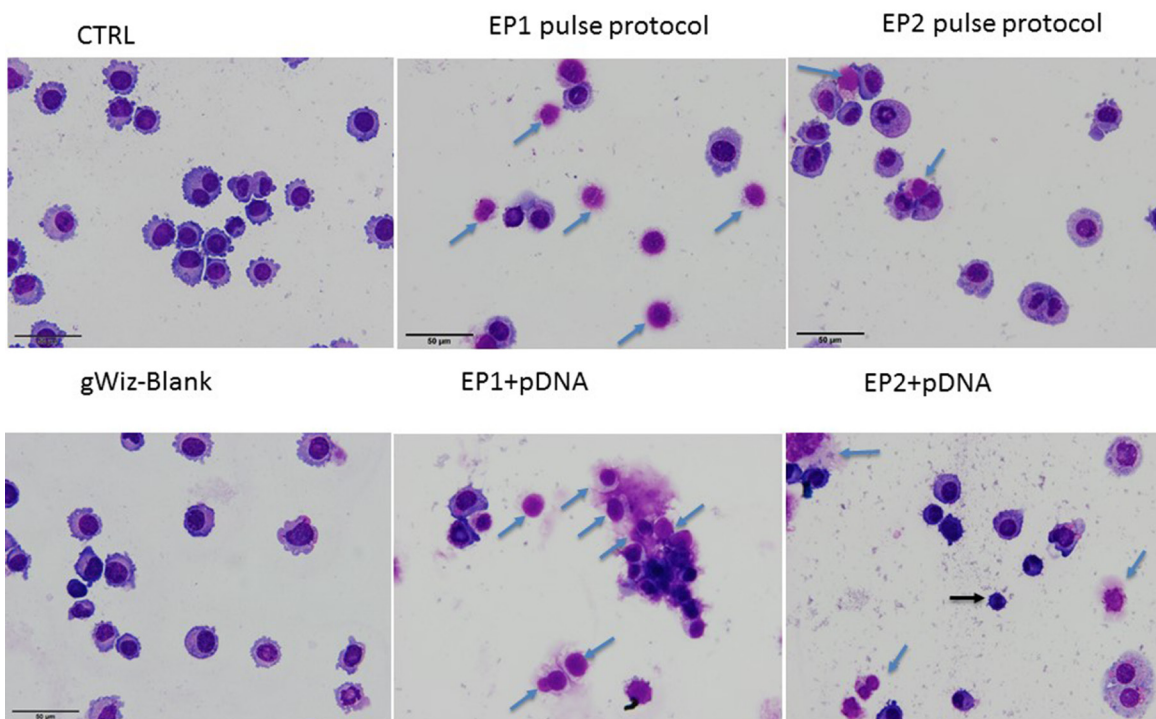
SUPPLEMENTARY MATERIALS

Giemsa staining 6h after GET of gWiz-Blank into TS/A cell line



Supplementary Figure 1: Morphology of TS/A cell line 6 hours after pDNA electrotransfer. Blue arrows indicate necrotic cells displaying cytoplasmic fragmentation and only an outline of the nucleus.

Giemsa staining 6h after GET of gWiz-Blank into WEHI 164 cell line



Supplementary Figure 2: Morphology of WEHI 164 cell line 6 hours after pDNA electrotransfer. Blue arrows indicate necrotic cells displaying cytoplasmic fragmentation and only an outline of the nucleus. Black arrows indicate apoptotic cells with vacuolization of the cytoplasm and formation of apoptotic bodies.

Supplementary Table 1: RT-PCR Information. See Supplementary_Table_1

Supplementary Table 2: Raw data for ATP leakage assay for TS/A and WEHI 164 cells

	control		gWiz Blank		EPI		EP2		pDNA+EPI		pDNA+EP2	
	a.u. (mean ± SE)	<i>n</i>	a.u. (mean ± SE)	<i>n</i>	a.u. (mean ± SE)	<i>n</i>	a.u. (mean ± SE)	<i>n</i>	a.u. (mean ± SE)	<i>n</i>	a.u. (mean ± SE)	<i>n</i>
TS/A	4833.3 ± 98.0	6	3325.9 ± 420.4	6	679.4 ± 23.6	9	1178.1 ± 304.5	6	154.4 ± 28.7	9	976.0 ± 90.4	6
WEHI												
164	1404.3 ± 497.4	5	1276.2 ± 413.6	5	310.0 ± 61.3	5	713.2 ± 221.6	5	106.0 ± 20.7	4	456.0 ± 128.7	7

a.u. - arbitrary units; SE – standard error of the mean.

REFERENCES

1. Livak KJ, Schmittgen TD. Analysis of relative gene expression data using real-time quantitative PCR and the 2(-Delta Delta C(T)) Method. *Methods*. 2001; 25:402–8.