

Supplementary material

Estimating local costs associated with *Clostridium difficile* infection using machine learning and electronic medical records

Authors

Theodore R. Pak, PhD,^a Kieran Chacko, BA, BSc,^a Timothy O'Donnell, BS,^a Shirish Huprikar, MD,^b Harm van Bakel, PhD,^a Andrew Kasarskis, PhD,^{a#} and Erick R. Scott, MD, MHS^a

Corresponding author: Andrew Kasarskis, Icahn Institute and Department of Genetics and Genomic Sciences, Icahn School of Medicine at Mount Sinai, One Gustave L. Levy Place, Box 1498, New York, NY 10029, USA; telephone, +1 (212) 659-8542; email andrew.kasarskis@mssm.edu

Alternate corresponding author: Theodore Pak, Icahn Institute and Department of Genetics and Genomic Sciences, Icahn School of Medicine at Mount Sinai, One Gustave L. Levy Place, Box 1498, New York, NY 10029, USA; telephone, +1 (212) 659-8314; email theodore.pak@icahn.mssm.edu

^a Icahn Institute and Department of Genetics and Genomic Sciences, Icahn School of Medicine at Mount Sinai, New York, NY

^b Division of Infectious Diseases, Department of Medicine, Icahn School of Medicine at Mount Sinai, New York, NY

Supplementary text

Supplementary methods. Details of propensity model development, matching, evaluation of matching performance, and length of stay comparisons.

Propensity models for *Clostridium difficile* infection (CDI) based on the five case definitions were trained using logistic regression with elastic net regularization. The α hyper-parameter, controlling the ratio of L1 to L2 penalties, was empirically selected on models fit for the first case definition via grid search, maximizing mean area under the receiver operating characteristic curve (AUROC) under five-fold nested cross validation (all values for $\alpha \leq 0.1$ produced equivalent AUROCs) and checking for effective shrinkage of coefficients (to within one-fifth of the size of the simplest model). This resulted in selecting $\alpha = 0.03$. The λ hyper-parameter, controlling overall penalization for model size, was empirically selected for each modeled case definition by maximizing mean AUROC under five-fold cross validation (Figure S6). Nested cross validation while selecting λ was used to evaluate AUROC, while the final propensity models were allowed to see the entire training dataset. 100 bootstrap resampling runs were used to estimate the 95% AUROC confidence interval (CI). The AUROC varied only slightly between case definitions (Figure S3): (i) by ICD-9 code, 0.81 (95% confidence interval [CI], 0.79–0.83); (ii) by positive toxin EIA, 0.76 (95% CI, 0.74–0.78), (iii) by positive toxin PCR, 0.84 (95% CI, 0.82–0.85), (iv) by either toxin assay, 0.81 (95% CI, 0.80–0.82); (v) by any of these, 0.82 (95% CI, 0.81–0.83). Since propensity models were intended to fairly assess risk at admission for CDI across both cases and controls, variables that could reflect workup or treatment of CDI (as opposed to pre-existing risk) were masked (Table S1). A board-certified infectious diseases physician reviewed the final set of variables selected by each model after regularization (Table S2) to ensure that none of them reflected medical sequelae of CDI as opposed to potential risk factors. The number of selected variables in each model ranged from 373 to 1,027 (Table S2).

Matching (1:1) on the propensity score was performed without replacement of controls using a nearest neighbor-matching algorithm and a caliper of 0.2 standard deviations of the logit of the propensity score,¹ after exact matching on gender and age divided into six ranges. To assess the performance of the matching, we calculated standardized mean differences² for age and gender (Table 1), for which a

difference between -0.1 and 0.1 is generally considered negligible,³ and examined the distributions of the propensity scores between matched groups (Figure S5). Furthermore, to ensure that propensity matching itself does not cause spurious changes in the outcome variable (LOS), we repeated the matching algorithm using the matched controls against remaining unmatched controls, creating a “matched-again” control cohort, with the expectation that re-matching controls should not, by itself, create significant differences in the outcome variable.

For each case definition of CDI, differences of the median length of stay (LOS) between cases and matched controls were calculated and 95% CIs were calculated from 10,000 bootstrap resampling runs. The minimum LOS was specified as 0.1 days (2.4 hours), with smaller values rounded up to this value. Statistical significance of differences in LOS was determined using two-sided Mann-Whitney U tests. P values for all contrasts reported in Figures 2 and 3 are conservatively Bonferroni-corrected for the full number of hypotheses (24). Kaplan-Meier plots were generated to examine the nonparametric maximum likelihood estimation for risk of discharge from the hospital between cases and matched controls, and 95% CIs for these plots were derived from log-transformed standard errors.

To examine whether changes in LOS may have depended on the time of CDI onset, we repeated the above analysis for case definition (iv) stratified by the time of the first positive toxin assay result, using three ranges: 0-3 days, 3-8 days, and ≥ 8 days. Propensity models were again fitted to each of these case cohorts for matching as described previously, with the added condition that controls discharged before the start of the CDI time window were ineligible for matching, effectuating simplified balanced risk set matching.⁴ To assess matching performance, propensity score distributions for each group were examined once more, and LOS was analyzed similarly to the original five case definitions.

To further characterize dependence of LOS on the time of CDI onset, we fit a nonparametric multistate model consistent with previous studies.⁵⁻⁷ The model has two transient states (admitted-uninfected and admitted-infected) and one absorbing state (discharged); each patient starts in the admitted-uninfected state. Figure 4A is a diagram of all allowed transitions. For all case definitions with a diagnosis time (ii, iii, and iv), an Aalen-Johansen estimator was used on the full, unmatched dataset to calculate time-varying hazards of each transition. Since the estimator is sensitive to regions with sparsity or outliers, the minimum LOS was specified as 1 day, the time of CDI diagnosis was left- or right-shifted to

at least 0.5 days from admission and discharge events, and the model was computed to a precision of 0.1 day up to the 99th percentile LOS value (38.9, 41.9, and 40.9 days for case definitions ii, iii, and iv, respectively). The mean excess LOS was then estimated as the average difference in LOS between patients with and without CDI at each time t , weighted by the distribution of times spent in the uninfected state. Robust 95% CIs were generated from 1,000 bootstrap resampling runs.

Analyses were performed in R 3.2.2 (R Foundation for Statistical Computing, Vienna, Austria) using the *glmnet*,⁸ *ROCR*,⁹ *MatchIt*,¹⁰ *survival*, and *etm*¹¹ packages.

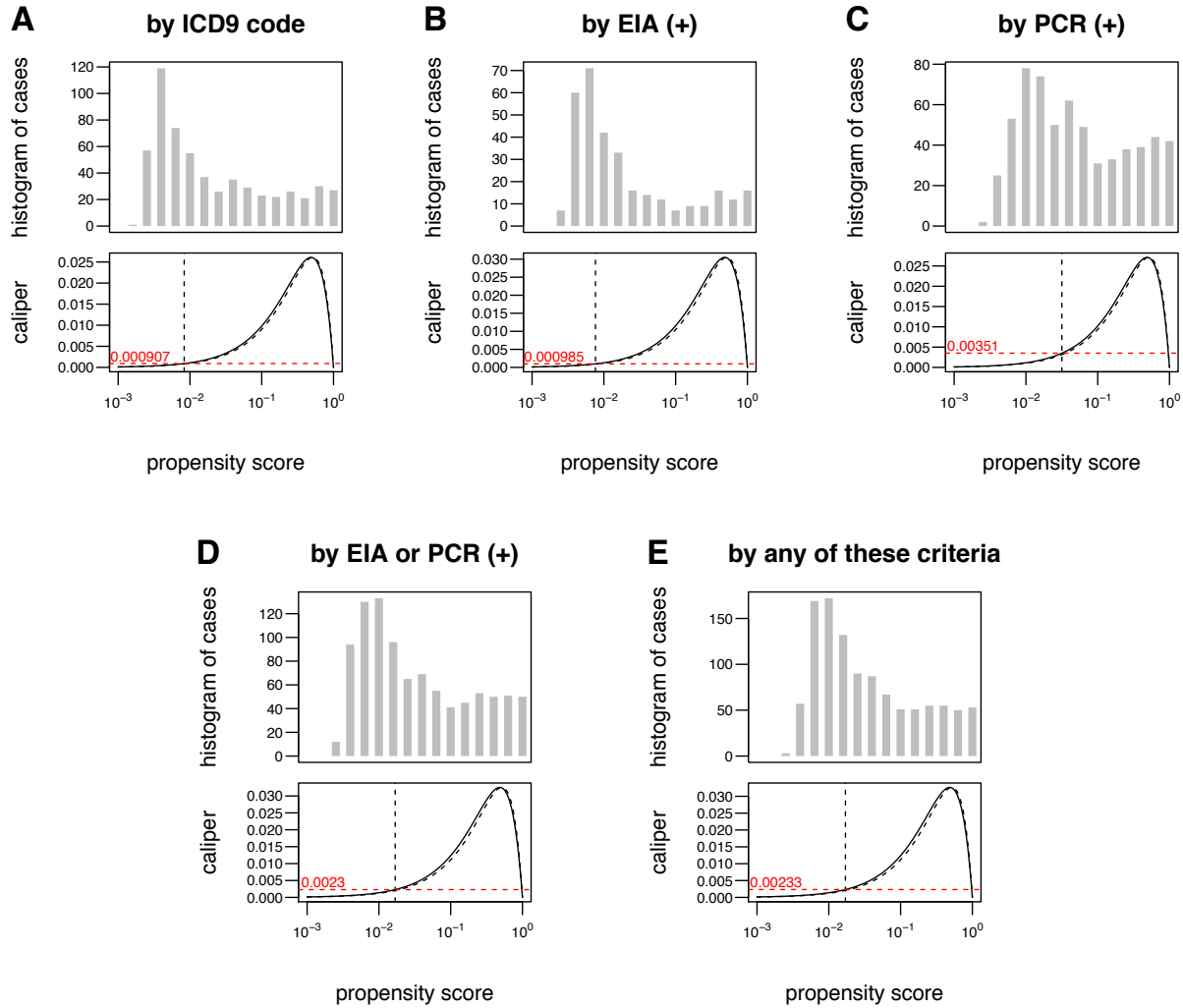
References

1. Austin PC. Optimal caliper widths for propensity-score matching when estimating differences in means and differences in proportions in observational studies. *Pharm Stat.* 2011;10(2):150-161. doi:10.1002/pst.433.
2. Austin PC. An Introduction to Propensity Score Methods for Reducing the Effects of Confounding in Observational Studies. *Multivariate Behav Res.* 2011;46(3):399-424. doi:10.1080/00273171.2011.568786.
3. Haukoos JS, Lewis RJ. The Propensity Score. *JAMA.* 2015;314(15):1637-8. doi:10.1001/jama.2015.13480.
4. Li YP, Propert KJ, Rosenbaum PR. Balanced Risk Set Matching. *J Am Stat Assoc.* 2001;96(October 2014):870-882. doi:10.1198/016214501753208573.
5. Mitchell BG, Gardner A, Barnett AG, Hiller JE, Graves N. The prolongation of length of stay because of Clostridium difficile infection. *Am J Infect Control.* 2014;42(2):164-167. doi:10.1016/j.ajic.2013.07.006.
6. Stevens VW, Khader K, Nelson RE, et al. Excess Length of Stay Attributable to Clostridium difficile Infection (CDI) in the Acute Care Setting: A Multistate Model. *Infect Control Hosp Epidemiol.* 2015;36(Cdi):1-7. doi:10.1017/ice.2015.132.
7. van Kleef E, Green N, Goldenberg SD, et al. Excess length of stay and mortality due to Clostridium difficile infection: A multi-state modelling approach. *J Hosp Infect.* 2014;88(4):213-217. doi:10.1016/j.jhin.2014.08.008.
8. Friedman J, Hastie T, Tibshirani R. Regularization Paths for Generalized Linear Models via Coordinate Descent. *J Stat Softw.* 2010;33(1):1-11. doi:10.18637/jss.v033.i01.
9. Sing T, Sander O, Beerenwinkel N, Lengauer T. ROCR: Visualizing classifier performance in R. *Bioinformatics.* 2005;21(20):3940-3941. doi:10.1093/bioinformatics/bti623.
10. Ho DE, Imai K, King G, Stuart EA. MatchIt: Nonparametric Preprocessing for Parametric Causal Inference. *J Stat Softw.* 2011;42(8):1-28. doi:10.18637/jss.v042.i08.
11. Allignol A, Schumacher M, Beyersmann J. Empirical Transition Matrix of Multi-State Models: The etm Package. *J Stat Softw.* 2011;38(4):1-15. doi:10.18637/jss.v038.i04.

Supplementary figures

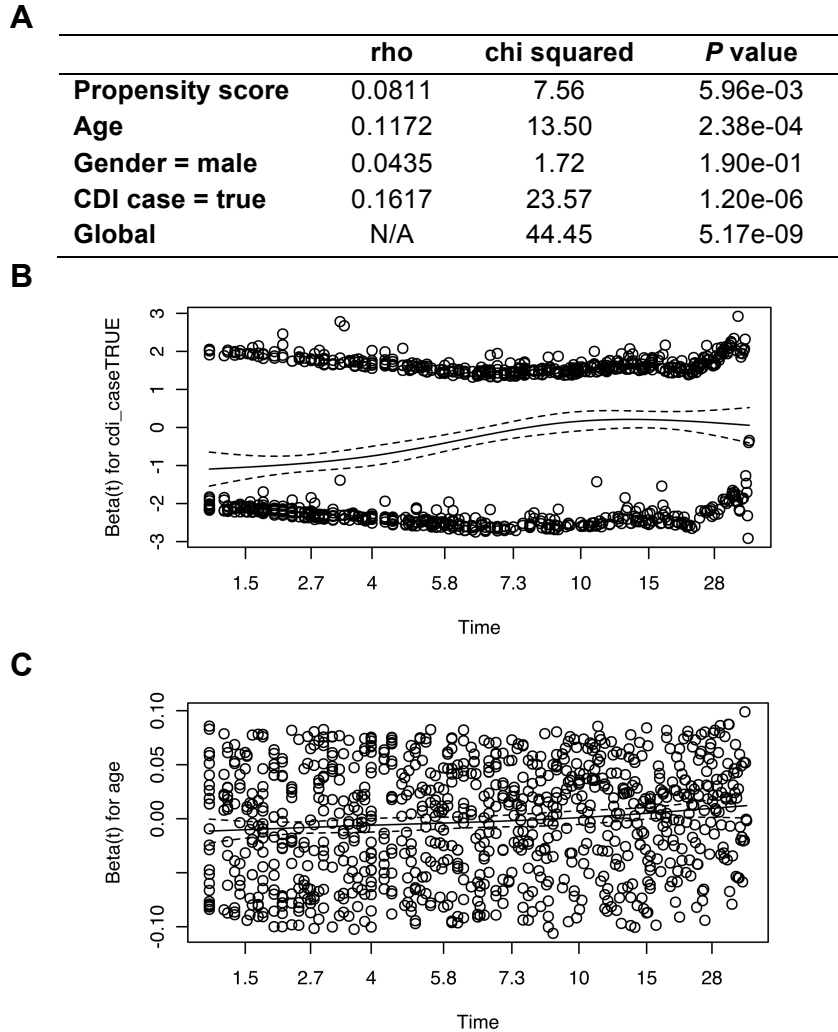
Figure S1.

Caliper sizes used for matching cases for each CDI case definition.



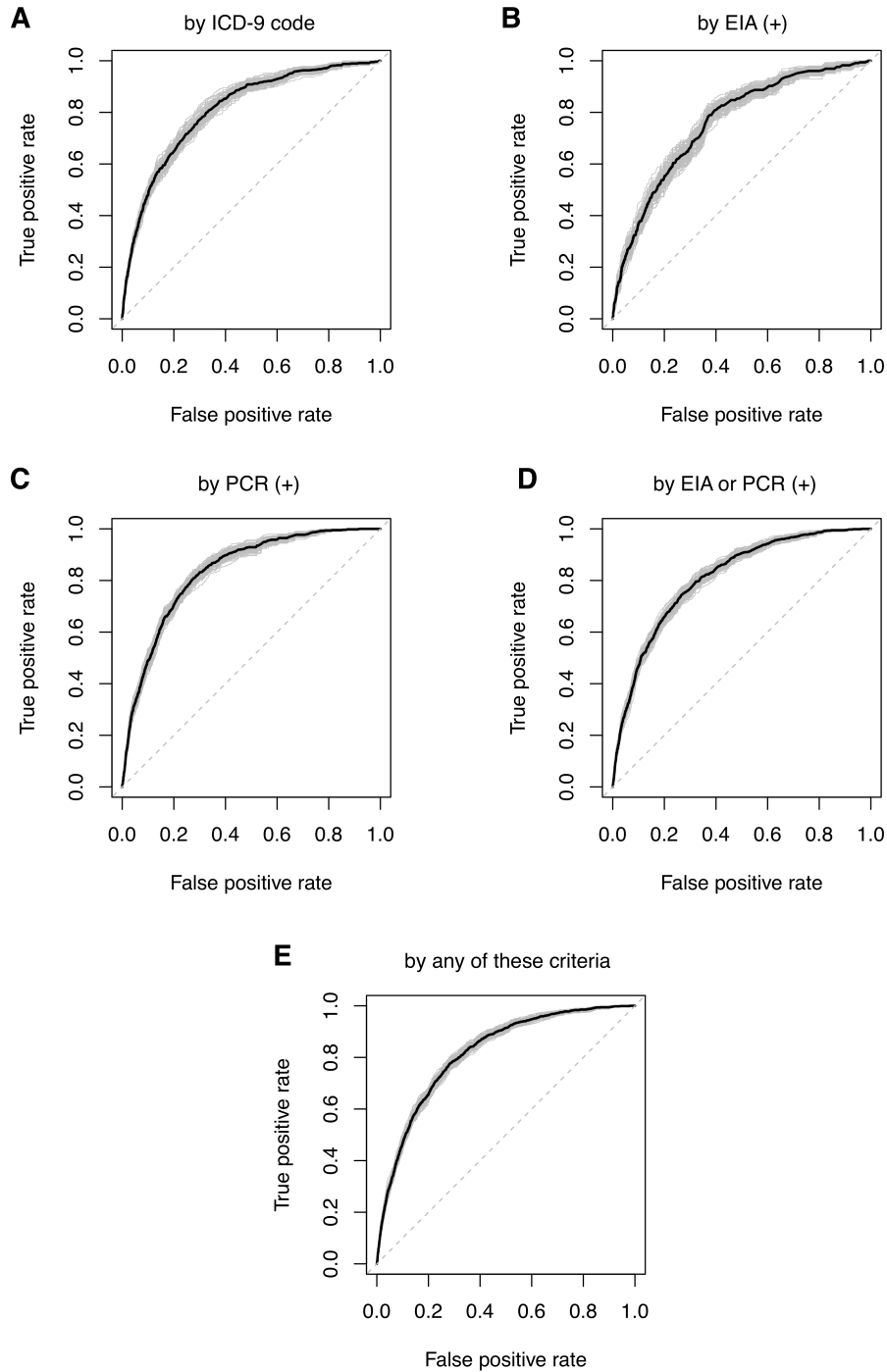
A-E, histograms of propensity score distributions for case cohorts as defined by each of the five CDI case definitions (top panels) compared with the size of the calipers used (bottom panels) for each corresponding unscaled propensity score. Unlike Figures S4 and S5, the X axes are \log_{10} probability scaled, not logit (log odds) scaled. Because calipers are applied during matching *after* logit-scaling of the propensity score (see Methods), the size of the caliper changes along the 0–1 range of the unscaled propensity score. The solid curve indicates the width of the upper caliper, and the dashed curve indicates the width of the lower caliper. The vertical dashed line indicates the median propensity score among the cases, and the horizontal red line indicates the size of the upper caliper at the median propensity score, represented as units of an unscaled probability.

Figure S2.
Violation of the proportional hazards assumption for the ICD-9 code case definition.



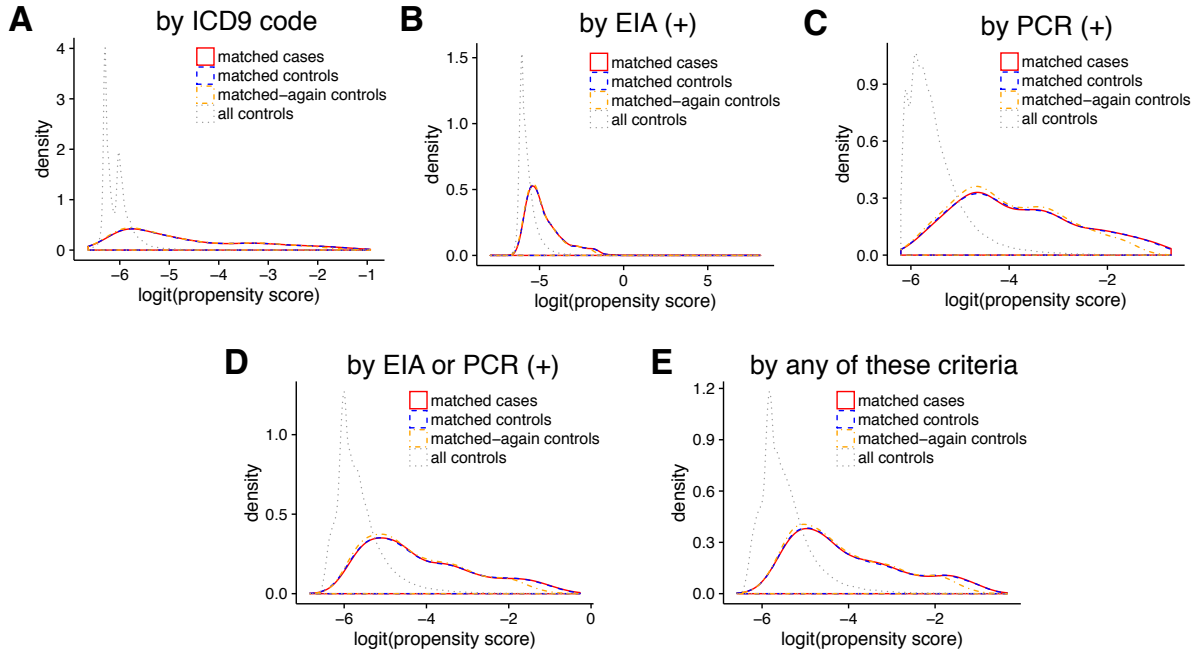
A, Table of summary statistics from scaled Schoenfeld residuals regressed against time transformation (individual covariates) and a global test of the proportional hazards assumption, using the R function *cox.zph* with a *transform* parameter of function(t) $\log(t+50)$. Propensity score, age, *Clostridium difficile* case status, and the global model violate the proportional hazards assumption. B, plot of the scaled Schoenfeld residuals for *Clostridium difficile* case status by transformed time. Solid line: smoothing spline; dotted lines: 2 standard errors. The zero proportional hazards assumption would require that the fitted spline resembles a straight horizontal line. C, plot as in B but of residuals for age by transformed time.

Figure S3.
Receiver operator characteristic curves for CDI propensity models.



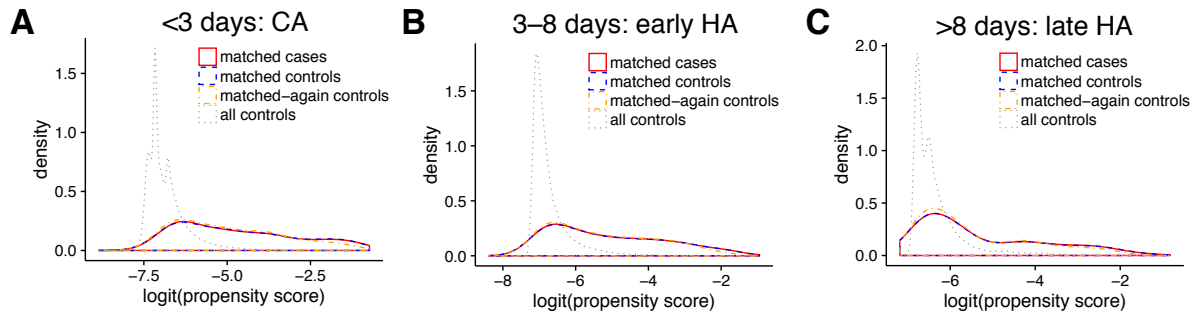
A-E, receiver operator characteristic (ROC) curve comparing the true positive rate against the false positive rate for every possible cutoff of the propensity score, for each of the five CDI case definitions. ROCs are only measured on test data not used to train the models, under five-fold cross validation. Light grey lines indicate ROCs for 100 bootstrap samples. Area under each ROC is reported in Supplementary Methods. CDI, *Clostridium difficile* infection.

Figure S4.
Propensity score distributions for matched cohorts for each CDI case definition



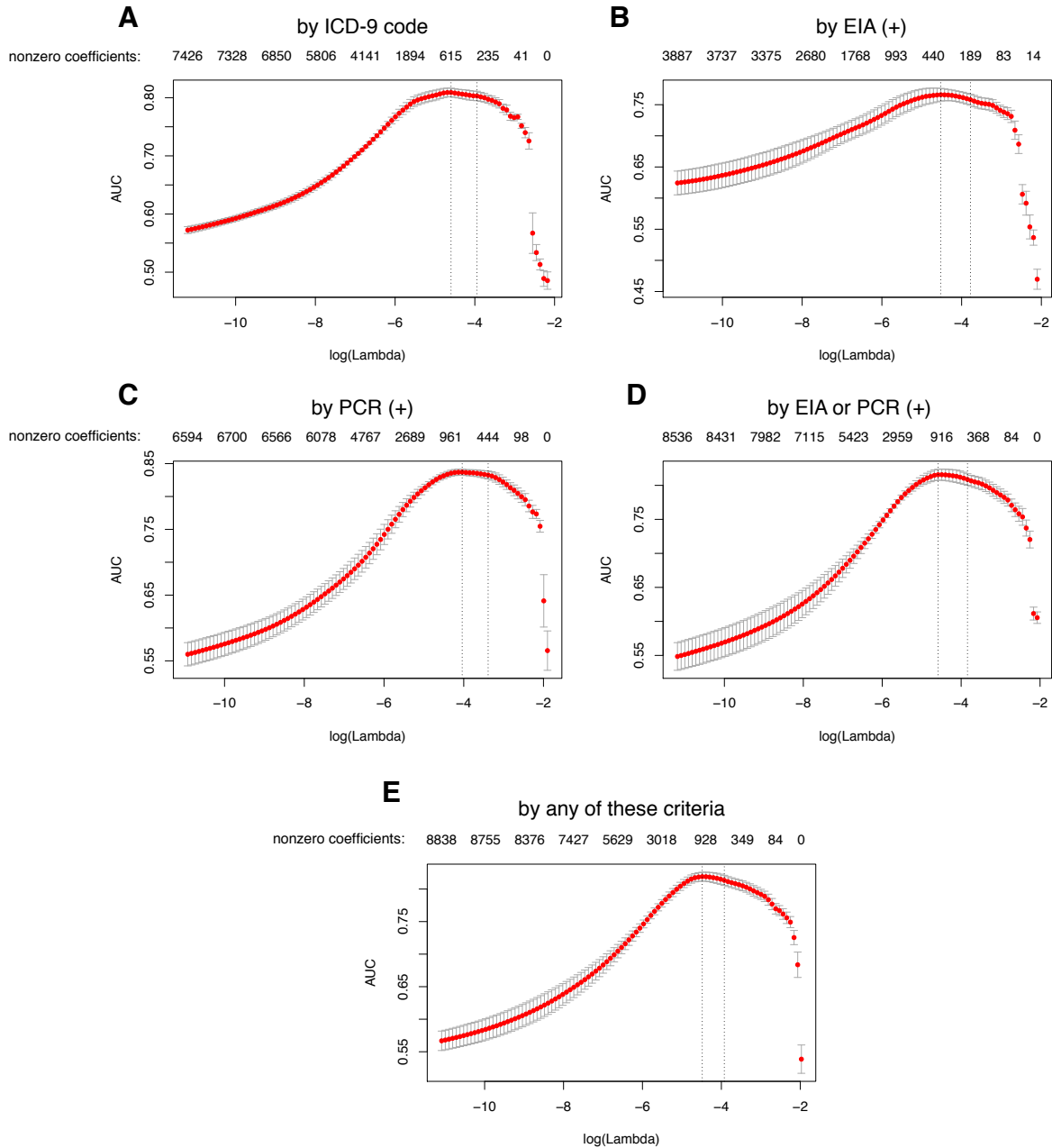
A-E, density plots of propensity score distributions for matched cases, matched controls, matched-again controls, and all controls for each of the five CDI case definitions. Matched-again controls are derived from a second round of matching between the case-matched controls from the first round of matching and remaining unmatched controls. All X axes are logit-scaled. All Y axes are scaled to unit probabilities; the area under every curve equals 1. The matching algorithm intends to align the propensity score distributions for all of the matched groups.

Figure S5.
Propensity score distributions for matched cohorts stratified by time of CDI diagnosis



A-C, density plots of propensity score distributions for matched cases, matched controls, matched-again controls, and all controls for cases defined by any positive toxin assay, stratified by the time to infection. Matched-again controls are derived from a second round of matching between the case-matched controls from the first round of matching and remaining unmatched controls. All X axes are logit-scaled. All Y axes are scaled to unit probabilities; the area under every curve equals 1. The matching algorithm intends to align the propensity score distributions for all of the matched groups.

Figure S6.
Empirical selection of the regularization penalty hyper-parameter lambda.



A-E, mean area under the receiver operating characteristic curve (AUC) vs. $\log(\lambda)$ for each of the case definitions for *Clostridium difficile* infection, based on five-fold cross-validation. As the $\log(\lambda)$ penalty hyper-parameter increases, the number of variables left in the model (i.e., with nonzero coefficients) decreases; these are listed across the top of each plot. Vertical bars indicate standard errors. The $\log(\lambda)$ value with maximal mean AUC and the $\log(\lambda)$ value with mean AUC within 1 standard deviation of the maximum are highlighted by vertical dashed lines; the former was used for the final propensity models.

Supplementary tables

Table S1. Variables closely correlated with *Clostridium difficile* infection workup or treatment that were excluded for propensity modeling

Variable	Description
problem_list:008.45	Intestinal infection due to <i>Clostridium difficile</i>
abnormal_labs:4730	C.DIFF. TOXIN B PCR
abnormal_labs:4647	C.DIFF EIA
abnormal_labs:4647	C.DIFF EIA TOXIN A&B
meds_administered:300025	VANCOMYCIN ORAL LIQUID REPACKAGE ONLY - 125MG/2.5ML
meds_administered:63653	VANCOMYCIN ORAL
meds_administered:8200	VANCOMYCIN 125 MG CAP
meds_administered:14246	VANCOMYCIN 250 MG/5 ML ORAL SOLUTION
meds_administered:300092	VANCOMYCIN ENEMA
meds_administered:13623	VANCOMYCIN 250 MG CAP
meds_administered:5484	METRONIDAZOLE 250 MG TAB
meds_administered:54227	METRONIDAZOLE ORAL
meds_administered:6870	METRONIDAZOLE 500 MG TAB
meds_administered:5484	METRONIDAZOLE 250 MG TAB
meds_administered:6295	METRONIDAZOLE IN SODIUM CHLORIDE (ISO-OSM) 500 MG/100 ML IV PIGGY BACK
meds_administered:400648	METRONIDAZOLE 250 MG/50 ML ISO-OSMOTIC SOLUTION
meds_administered:1527	METRONIDAZOLE HCL 500 MG IV SOLUTION
meds_administered:19702	METRONIDAZOLE 375 MG CAP
meds_administered:300009	METRONIDAZOLE 50 MG/ML ORAL SUSP
meds_administered:400660	METRONIDAZOLE 750 MG/150 ML ISO-OSMOTIC SOLUTION
meds_reported:300025	VANCOMYCIN ORAL LIQUID REPACKAGE ONLY - 125MG/2.5ML
meds_reported:63653	VANCOMYCIN ORAL
meds_reported:8200	VANCOMYCIN 125 MG CAP
meds_reported:14246	VANCOMYCIN 250 MG/5 ML ORAL SOLUTION
meds_reported:300092	VANCOMYCIN ENEMA
meds_reported:13623	VANCOMYCIN 250 MG CAP
meds_reported:5484	METRONIDAZOLE 250 MG TAB
meds_reported:54227	METRONIDAZOLE ORAL
meds_reported:6870	METRONIDAZOLE 500 MG TAB
meds_reported:5484	METRONIDAZOLE 250 MG TAB
meds_reported:6295	METRONIDAZOLE IN SODIUM CHLORIDE (ISO-OSM) 500 MG/100 ML IV PIGGY BACK
meds_reported:400648	METRONIDAZOLE 250 MG/50 ML ISO-OSMOTIC SOLUTION
meds_reported:1527	METRONIDAZOLE HCL 500 MG IV SOLUTION
meds_reported:19702	METRONIDAZOLE 375 MG CAP
meds_reported:300009	METRONIDAZOLE 50 MG/ML ORAL SUSP

Variable	Description
meds_reported:400660	METRONIDAZOLE 750 MG/150 ML ISO-OSMOTIC SOLUTION
problem_list:041.84	Other specified bacterial infections in conditions classified elsewhere and of unspecified site, other anaerobes
problem_list:V07.0	Need for isolation
problem_list:V02.3	Carrier or suspected carrier of other gastrointestinal pathogens
problem_list:787.91	Diarrhea

Raw data for this table are available in tab-separated values format from Figshare at doi:10.6084/m9.figshare.4311695

Abbreviation: C.DIFF, *Clostridium difficile*; PCR, polymerase chain reaction; EIA, enzyme immunoassay; CAP, caplet; TAB, tablet; ISO-OSM, iso-osmotic; IV, intravenous; SUSP, suspension

Table S2. Non-zero coefficients (selected variables) for *Clostridium difficile* infection propensity models after regularization

Raw data for this table are available in tab-separated values format from Figshare at doi:10.6084/m9.figshare.4311695

Notes: Blank cells indicate the variable was not selected for the model. Variables not selected for any of the models are not included in this table. All variables are boolean, denoting presence or absence, except for “age,” which is continuous and expressed in years. The natural exponent of each coefficient is the modeled odds ratio per unit of the corresponding variable.

Variable	Description	Model coefficients for each case definition				
		by ICD-9 code	by EIA (+)	by PCR (+)	EIA or PCR (+)	by any of these
problem_list:209.26	Malignant carcinoid tumor of midgut, not otherwise specified	7.608	6.645		6.769	6.639
meds_reported:96857	CEFTAROLINE FOSAMIL 600 MG INTRAVENOUS SOLUTION	7.195		5.430	6.243	6.091
meds_administered:4074	PROMETHAZINE 6.25 MG/5 ML SYRUP	6.801		5.973	6.428	6.309
meds_reported:1692	DIOVAN HCT 80 MG-12.5 MG TAB	6.761	3.508		5.413	5.289
meds_administered:65996	HEPATITIS B IMMUNE GLOBULIN-MALTOSE >312 UNIT/ML (5 ML) INJECTION SOLN	6.678		5.826	6.290	6.060
abnormal_labs:4311-BACT Ag	ST.PNEUMO.	6.512		5.355	5.874	5.701
meds_reported:95567	GLUCAGON (HUMAN RECOMBINANT) 1 MG/ML SOLUTION FOR INJECTION	6.367		4.531	5.262	5.104
problem_list:477.1	Allergic rhinitis due to food	6.358		3.041	6.468	6.049
(Intercept)		-6.147	-5.996	-5.807	-5.995	-5.751
meds_reported:19850	CIPROFLOXACIN 10 MG/ML IV	6.091		5.268	5.645	5.324
meds_reported:37860	HALOPERIDOL 5 MG/ML IM SYRINGE	6.024		5.354	5.670	5.570
meds_reported:26285	NUT.TX.GLUC.INTOL,LAC-FREE,REG ORAL LIQUID	5.798		4.379	4.524	5.029
meds_reported:77795	HYDROMORPHONE (PF) INJ	5.461				4.945
meds_reported:46547	DAILY MULTIPLE VITAMINS/IRON ORAL	5.272		4.275	4.373	4.341
meds_reported:44687	CEFTIN ORAL	5.084		4.401	4.854	4.629
problem_list:536.49	Other gastrostomy complications	4.909		5.653	6.145	5.877
problem_list:839.00	Closed dislocation, cervical vertebra, unspecified	4.800		4.637	5.489	4.462
problem_list:730.21	Unspecified osteomyelitis, shoulder region	4.689		6.209	4.417	4.297
meds_reported:19525	PSEUDOEPHEDRINE 30 MG CAP	4.658		4.257	4.725	4.249
problem_list:491.8	Other chronic bronchitis	4.550	7.105		4.243	4.009
problem_list:374.34	Blepharochalasis	4.544		4.766	4.308	4.131
problem_list:756.17	Spina bifida occulta	4.481				4.248
problem_list:364.41	Hyphema of iris and ciliary body	4.242		3.725	3.974	4.007
meds_reported:64228	VITRON-C ORAL	4.098		3.014	3.360	3.263
meds_reported:6373	LEVONORGESTREL-ETHINYL ESTRADIOL 0.15 MG-30 MCG TABLET	4.032		3.288	3.569	3.344
problem_list:666.12	Other immediate postpartum hemorrhage, delivered, with mention of postpartum complication	4.020		3.308	3.885	3.698
problem_list:201.50	Hodgkin's disease, nodular sclerosis, unspecified site, extranodal and solid organ sites	4.000		2.808	3.216	3.078
meds_reported:37763	GALANTAMINE ER 16 MG 24 HR CAPSULE,EXTENDED RELEASE	3.936		2.627	2.820	2.914
meds_reported:42030	APIDRA SUBQ	3.935		3.388	3.492	3.263
meds_reported:48350	ENOXAPARIN SUBQ	3.822		2.707	2.889	2.708

Variable	Description	Model coefficients for each case definition				
		by ICD-9 code	by EIA (+)	by PCR (+)	EIA or PCR (+)	by any of these
meds_reported:95777	BUPRENORPHINE-NALOXONE 2 MG-0.5 MG SUBLINGUAL FILM	3.816		3.583	3.860	3.555
meds_reported:39846	B COMPLEX-VITAMIN C 100 MG-FOLIC ACID 1 MG TABLET	3.713		2.999	3.574	3.368
surgery_cases:BONE MARROW HARVEST		3.710				3.347
meds_administered:400916	POTASSIUM CHLORIDE IV SYRINGE 0.1 MEQ/ML STERILE DIL	3.686		3.037	3.381	3.202
meds_reported:56780	OYSCO D ORAL	3.604		3.315	3.485	3.147
meds_administered:400337	GANCICLOVIR SYRINGE	3.575		3.007	3.289	3.130
problem_list:203.10	Plasma cell leukemia, without mention of having achieved remission	3.571		1.753	1.958	3.158
problem_list:999.33	Local infection due to central venous catheter	3.554		2.930	3.135	3.080
meds_reported:13640	AMOXAPINE 100 MG TABLET	3.486				3.059
problem_list:556.0	Ulcerative (chronic) enterocolitis	3.454		3.019	3.057	2.866
meds_reported:9858	OFLOXACIN 0.3 % EAR DROPS	3.392				2.697
meds_administered:3866	AMOXAPINE 50 MG TABLET	3.380				2.990
problem_list:727.82	Calcium deposits in tendon and bursa	3.311		2.593	3.071	3.062
problem_list:277.02	Cystic fibrosis with pulmonary manifestations	3.297		3.225	3.665	3.554
problem_list:529.0	Glossitis	3.267				2.871
meds_reported:36581	CEFTAZIDIME 2 GRAM/50 ML IN DEXTROSE (ISO-OSM) INTRAVENOUS PIGGYBACK	3.250				3.164
abnormal_labs:2112-HGB C		3.249		3.411	3.245	3.041
meds_reported:25233	PROTEIN SUPPLEMENT ORAL PACKET	3.240		2.788	1.897	1.837
meds_reported:971	THALIDOMIDE 50 MG CAPSULE	3.239		3.886	3.492	3.132
problem_list:310.1	Personality change due to conditions classified elsewhere	3.237		2.840	2.531	2.498
problem_list:333.5	Other choreas	3.229		3.205	2.996	2.746
meds_reported:19143	AZTREONAM 2 GRAM/50 ML IN DEXTROSE (ISO-OSMOTIC) INTRAVENOUS PIGGYBACK	3.212				3.058
problem_list:040.0	Gas gangrene	3.183		3.032	2.983	2.570
problem_list:461.0	Acute maxillary sinusitis	3.171				2.410
problem_list:681.02	Onychia and paronychia of finger	3.146		3.624	2.631	2.389
meds_reported:54995	MVI, ADULT NO.1 WITH VIT K IV	3.140		2.590	2.285	2.299
meds_reported:101627	METOCLOPRAMIDE HCL INJ	3.140		2.291	2.678	2.606
meds_administered:23972	GEL DRESSING TOPICAL	3.132		1.630	2.029	1.786
meds_reported:14104	UREA 10 % TOPICAL CREAM	3.109		2.838	2.679	2.490
meds_administered:1388	ANAGRELIDE 0.5 MG CAP	3.101		1.909	1.915	1.781
meds_reported:6450	TOBRAMYCIN-DEXAMETHASONE 0.3 %-0.1 % EYE OINTMENT	3.095		2.346	2.623	2.271
surgery_cases:EXAMINATION	UNDER ANES PELVIC	3.089	3.943		2.905	2.569
meds_reported:5744	PERINDOPRIL ERBUMINE 4 MG TABLET	3.082			2.479	2.354
meds_reported:46119	CORTIFOAM RECT	3.055		3.480	3.787	2.890
meds_reported:39806	COD LIVER OIL-VITAMINS A & D-PETROLATUM 96 % TOPICAL OINTMENT	3.011		2.806	2.627	2.433
meds_reported:36406	CIPROFLOXACIN 400 MG/40 ML IV	2.972				2.757
meds_reported:18631	CLOBETASOL 0.05 % TOPICAL SOLN	2.887				2.507
problem_list:281.3	Other specified megaloblastic anemias not elsewhere classified	2.854		5.220	2.461	2.248
problem_list:E888.1	Fall resulting in striking against other object	2.836		2.625	2.404	2.284
problem_list:238.2	Neoplasm of uncertain behavior of skin	2.829	3.715		2.550	2.254
meds_reported:44569	CARTIA XT ORAL	2.773				1.926
problem_list:041.04	Streptococcus infection in conditions classified elsewhere and of unspecified site, streptococcus, group D [Enterococcus]	2.750		1.870	2.429	1.954
meds_reported:82974	INSULIN PUMP SYRINGE 3 ML	2.711		2.116	2.293	2.118

Variable	Description	Model coefficients for each case definition				
		by ICD-9 code	by EIA (+)	by PCR (+)	EIA or PCR (+)	by any of these
meds_reported:18020	DEXAMETHASONE 0.5 MG TAB	2.684		0.429	0.772	1.817
problem_list:078.89	Other specified diseases due to viruses	2.674		1.898	2.053	1.809
problem_list:041.7	Pseudomonas infection in conditions classified elsewhere and of unspecified site	2.660				2.335
meds_administered:2857	FUROSEMIDE 10 MG/ML ORAL SOLN	2.651				1.984
meds_administered:4415	SODIUM CHLORIDE 3 % FOR NEBULIZATION	2.606		0.928	1.034	0.853
problem_list:533.9		2.600	2.405		1.784	1.722
surgery_cases:ROUX-EN-Y CHOLEJEJU		2.579		3.967	2.273	1.989
meds_administered:18646	LIDOCAINE HCL 5 % TOPICAL OINTMENT	2.569		1.669	2.138	1.642
problem_list:324.9	Intracranial and intraspinal abscess of unspecified site	2.556				1.805
problem_list:437.0	Cerebral atherosclerosis	2.532		2.257	2.267	1.993
problem_list:879.9	Open wound(s) (multiple) of unspecified site(s), complicated	2.528		1.508	2.024	1.903
meds_reported:11530	MICONAZOLE NITRATE 2 % TOPICAL OINTMENT	2.519				1.381
problem_list:173.62	Squamous cell carcinoma of skin of upper limb, including shoulder	2.441		1.715	2.030	1.999
meds_reported:3635	DOXEPIN 25 MG CAPSULE	2.437				1.577
meds_administered:4860	PE-SHARK LIVER OIL-COCOA BUTTR 0.25 %-3 % RECTAL SUPPOSITORY	2.432		1.662	2.280	2.104
problem_list:628.2	Infertility, female, of tubal origin	2.411		2.216	2.366	2.012
meds_reported:400340	NAFCILLIN 2 G IVPB	2.407		1.540	1.564	1.517
meds_reported:5479	IPRATROPIUM BROMIDE 18 MCG/ACTUATION AEROSOL INHALER	2.404		3.290	2.786	2.612
meds_administered:81991	VITAMIN B COMPLEX	2.389		1.685	1.943	1.781
meds_reported:55088	NADOLOL ORAL	2.384	3.002	0.632	1.735	1.608
problem_list:753.9	Unspecified anomaly of urinary system	2.383		2.268	2.048	1.779
problem_list:243	Congenital hypothyroidism	2.369		1.266	1.160	1.124
problem_list:359.4	Toxic myopathy	2.365	5.048		2.087	1.843
meds_administered:102733	ELVITEGRAV 150 MG-COBICIST 150 MG-EMTRICIT 200 MG-TENOF 300 MG TABLET	2.362		1.863	2.328	2.000
problem_list:709.1	Vascular disorders of skin	2.353		3.054	2.125	1.816
problem_list:271.0	Glycogenosis	2.344				2.104
problem_list:332.1	Secondary parkinsonism	2.340		1.905	2.181	1.866
meds_administered:300022	URSODIOL 60 MG/ML ORAL SUSP	2.331				1.425
meds_administered:7019	FLUOCINONIDE 0.05 % TOPICAL OINTMENT	2.257				1.653
problem_list:V10.01	Personal history of malignant neoplasm of tongue	2.217		1.673	1.830	1.733
problem_list:564.4	Other postoperative functional disorders	2.195		2.084	1.581	1.412
meds_administered:400719	HEPARIN FOR DIALYSIS 250 UNITS/ML IN NS SYRINGE	2.178		1.400	1.745	1.539
meds_reported:59140	QUETIAPINE ORAL	2.154		1.442	1.718	1.509
problem_list:296.53	Bipolar I disorder, most recent episode (or current) depressed, severe, without mention of psychotic behavior	2.141		1.468	1.980	1.711
meds_reported:48762	EXCEDRIN MIGRAINE ORAL	2.110		1.156	1.591	1.410
meds_administered:4298	FLUOCINOLONE 0.01 % TOPICAL CREAM	2.109		1.540	1.949	1.541
meds_reported:15792	PRAMOXINE-CALAMINE 1 %-8 % LOTION	2.108		1.795	1.654	1.941
meds_reported:28094	CLONAZEPAM 0.25 MG DISINTEGRATING TABLET	2.103		1.713	1.967	1.703
meds_reported:56785	OYSTER CALCIUM ORAL	2.080	1.792		1.890	1.694
meds_reported:4939	TACROLIMUS 5 MG CAP	2.073				1.260
surgery_cases:BURR HOLES/EVAC HEMATOMA		2.062		2.607	2.685	2.426
meds_administered:31853	MYCOPHENOLATE SODIUM 360 MG TABLET,DELAYED RELEASE	2.054		0.532	0.957	0.822

Variable	Description	Model coefficients for each case definition				
		by ICD-9 code	by EIA (+)	by PCR (+)	EIA or PCR (+)	by any of these
meds_administered:400359	PIPERACILLIN-TAZOBACTAM 3.375 G IVPB	1.999		1.641	1.683	1.485
meds_administered:400951	HYDROCORTISONE IN D5W 500 ML INFUSION	1.997		0.397	0.995	1.952
meds_reported:81611	CERTOLIZUMAB PEGOL 400 MG (200 MG X 2) SUB-Q KIT	1.996		1.434	1.946	1.858
meds_reported:29143	AMPICILLIN-SULBACTAM 3 GRAM IV PIGGY BACK	1.931				1.675
abnormal_labs:20857-BAND CELL		1.909		1.488	1.193	0.996
problem_list:173.11	Basal cell carcinoma of eyelid, including canthus	1.901		1.308	1.675	1.444
problem_list:476.0	Chronic laryngitis	1.897		1.448	1.844	1.617
problem_list:553.00	Femoral hernia without mention of obstruction of gangrene, unilateral or unspecified(not specified as recurrent)	1.889		1.161	1.291	1.052
meds_reported:48022	EC ASPIRIN ORAL	1.885		1.576	1.963	1.733
meds_administered:1093	MESALAMINE ER 250 MG CAPSULE,EXTENDED RELEASE	1.866		1.372	1.625	1.492
problem_list:708.8	Other specified urticaria	1.840				1.402
problem_list:643.03	Mild hyperemesis gravidarum, antepartum condition or complication	1.835		1.158	1.734	1.427
problem_list:707.24	Pressure ulcer, stage IV	1.827				0.696
meds_reported:28400	PEG 400-PROPYLENE GLYCOL 0.4 % -0.3 % EYE DROPS	1.810		1.163	1.810	1.589
problem_list:389.20	Mixed hearing loss, unspecified	1.807		1.149	1.622	1.467
meds_reported:86402	CERTOLIZUMAB PEGOL 400 MG/2 ML (200 MG/ML X 2) SUBQ SYRINGE KIT	1.805		1.916	1.765	1.446
meds_reported:28557	POVIDONE-IODINE 10 % TOPICAL SOLN	1.799		1.280	1.324	1.198
problem_list:478.29	Other diseases of pharynx, not elsewhere classified	1.792	2.704		1.529	1.256
surgery_cases:COLONOSCOPY\BIOPSY\BRUSHING		1.788	2.516		1.382	1.072
problem_list:204.00	Acute lymphoid leukemia, without mention of having achieved remission	1.784			0.047	0.919
problem_list:009.1	Colitis, enteritis, and gastroenteritis of presumed infectious origin	1.767	6.191		1.396	1.163
meds_reported:48357	ENSURE ORAL	1.764		1.007	1.281	1.400
problem_list:836.1	Tear of lateral cartilage or meniscus of knee, current	1.763		2.041	1.539	1.303
problem_list:996.44	Peri-prosthetic fracture around prosthetic joint	1.762		1.053	1.583	1.336
problem_list:347.00	Narcolepsy, without cataplexy	1.759		1.879	1.714	1.349
meds_reported:8373	HYDROMORPHONE (PF) 1 MG/ML INJECTION	1.757		1.011	1.124	1.085
meds_administered:8320	ONDANSETRON 8 MG DISINTEGRATING TABLET	1.744		0.654	0.988	1.270
meds_reported:28595	IMATINIB 100 MG TABLET	1.727		1.246	0.993	0.716
meds_reported:39537	DIAZEPAM 5 MG-7.5 MG-10 MG RECTAL KIT	1.726		2.160	2.067	1.530
meds_reported:18563	LACTOBACILLUS RHAMNOSUS GG 10 BILLION CELL CAPSULE	1.692				0.924
meds_reported:6484	LITHIUM CARBONATE ER 300 MG TAB	1.683		0.962	1.409	1.182
problem_list:341.0	Neuromyelitis optica	1.650				0.914
meds_administered:400100	AZTREONAM IVPB	1.647		0.586	0.861	0.702
meds_administered:20356	METHADONE 5 MG/5 ML ORAL SOLN	-1.629				-0.412
problem_list:757.33	Congenital pigmentary anomalies of skin	1.586		0.320	0.856	0.770
meds_reported:42227	ASACOL ORAL	1.573		0.321	0.533	1.355
problem_list:334.3	Other cerebellar ataxia	1.568				0.879
problem_list:799.9	Other unknown and unspecified cause of morbidity and mortality	1.548	4.299		1.223	0.857
meds_reported:50757	HEPARIN (PORCINE) MISC	1.534		0.802	1.125	0.871
meds_reported:8878	BETHANECHOL CHLORIDE 25 MG TABLET	1.496		1.865	1.839	1.803

Variable	Description	Model coefficients for each case definition				
		by ICD-9 code	by EIA (+)	by PCR (+)	EIA or PCR (+)	by any of these
meds_reported:52824	LEVAQUIN ORAL	1.488		0.759	1.042	0.827
problem_list:362.74	Pigmentary retinal dystrophy	1.480				1.054
meds_administered:15959	NORGESTIMATE-ETHINYL ESTRADIOL 0.18/0.215/0.25 MG-35 MCG(28) TAB	1.471		1.028	1.626	1.212
meds_reported:4526	PYRIDOXINE 25 MG TABLET	1.468		0.878	1.258	1.140
meds_reported:2857	FUROSEMIDE 10 MG/ML ORAL SOLN	1.444		0.644	0.928	0.624
meds_administered:5971	PANTOPRAZOLE 40 MG INTRAVENOUS SOLUTION	1.435				0.987
meds_reported:39642	CALCIUM CARBONATE-VITAMIN D3 250 MG-125 UNIT TABLET	1.431		1.025	1.163	1.002
meds_administered:3134	CLONIDINE 0.2 MG/24 HR WEEKLY TRANSDERMAL PATCH	1.395		0.769	1.148	0.873
meds_reported:87971	THYROID (PORK) 60 MG TAB	1.375		0.758	1.379	1.046
problem_list:239.9	Neoplasm of unspecified nature, site unspecified	1.353	1.617		0.894	0.717
problem_list:161.0	Malignant neoplasm of glottis	1.346	3.831		1.096	0.821
meds_reported:59360	REGLAN ORAL	1.345		0.757	0.886	0.663
meds_reported:80345	TAP WATER ENEMA	-1.324		-0.527	-1.433	-1.109
problem_list:478.20	Unspecified disease of pharynx	1.324		0.577	0.995	0.748
meds_administered:400057	MEROPENEM IVPB	1.315		1.203	1.122	1.229
meds_reported:3840	POTASSIUM CHLORIDE POWDER	1.298				1.479
problem_list:579.8	Other specified intestinal malabsorption	1.294				0.980
problem_list:556.2	Ulcerative (chronic) proctitis	1.280			0.058	0.971
surgery_cases:COLON RESECTION		1.278	1.160	0.144	1.074	0.857
abnormal_labs:295-SICKLE CELL SCREEN		1.271				0.653
surgery_cases:FLEXIBLE SIGMOIDOSCOPY		1.256				1.128
meds_administered:11019	LINEZOLID 600 MG TABLET	1.234				0.667
meds_reported:29146	CEFAZOLIN 1 GRAM IV PIGGY BACK	1.230		2.036	2.158	1.826
meds_reported:29494	CHOLESTYRAMINE (WITH SUGAR) 4 GRAM PACKET	1.230		1.057	1.150	1.390
meds_reported:300099	LIDOCAINE-PRILOCAINE 2.5 %-2.5 % TOPICAL CREAM	-1.206		-0.563	-1.276	-1.029
meds_reported:14636	ACETYLCYSTEINE 100 MG/ML (10 %) SOLUTION	1.204		0.573	0.505	0.463
meds_reported:18658	COLESTIPOL 5 GRAM ORAL PACKET	1.203				1.050
problem_list:453.4		1.199	2.768		2.053	1.802
meds_reported:17030	FAMOTIDINE 40 MG/5 ML ORAL SUSPENSION	1.189		0.887	1.396	0.963
problem_list:560.0	Intussusception	1.181		0.744	0.931	0.635
meds_administered:400312	FLUDARABINE INFUSION	1.165			0.024	
meds_reported:4704	HYDROMORPHONE 8 MG TABLET	1.156		0.391	0.530	0.732
meds_administered:13223	DIPHENHYDRAMINE 12.5 MG/5 ML ELIXIR	1.155				0.223
meds_reported:9111	LOPERAMIDE 1 MG/5 ML ORAL LIQUID	1.147		0.712	0.990	0.736
meds_administered:12933	DEXAMETHASONE 0.1 % EYE DROPS,SUSPENSION	1.136				0.490
meds_administered:85032	LEVETIRACETAM 500 MG/5 ML (5 ML) ORAL SOLN	1.131		0.076	0.001	0.577
problem_list:V78.1	Screening for other and unspecified deficiency anemia	1.130	1.181		0.811	0.664
meds_reported:6032	CLINDAMYCIN 150 MG CAP	1.128		0.211	0.492	0.302
problem_list:711.00	Pyogenic arthritis, site unspecified	1.124			0.730	0.621
problem_list:994.9	Other effects of external causes	1.121		1.568	0.831	0.688
meds_reported:58577	PRO-STAT AWC ORAL	1.090		0.667	0.944	0.923
meds_reported:28093	CLONAZEPAM 0.125 MG DISINTEGRATING TABLET	1.090		0.825	1.041	0.781
problem_list:362.36	Venous tributary (branch) occlusion	1.090	-1.369	0.856	0.953	0.881
meds_reported:17056	COLLAGENASE CLOSTRIDIUM HISTOLYTICUM 250 UNIT/G OINTMENT	1.088		0.176	0.093	0.058
meds_reported:5327	VITAMIN A & D TOPICAL OINTMENT	1.088		1.203	1.127	0.703
meds_reported:51053	HYDRALAZINE INJ	1.086		0.777	0.606	0.472

Variable	Description	Model coefficients for each case definition				
		by ICD-9 code	by EIA (+)	by PCR (+)	EIA or PCR (+)	by any of these
problem_list:555.2	Regional enteritis of small intestine with large intestine	1.074	0.122	0.303	0.523	0.692
meds_administered:12449	RANITIDINE IN 0.45 % SODIUM CHLORIDE 50 MG/50 ML IV PIGGY BACK	1.073			0.785	0.545
meds_administered:36912	MESALAMINE ER 500 MG CAP	1.071		0.828	0.923	0.899
meds_reported:2736	PHYTONADIONE 10 MG/ML INJECTION SOLUTION	-1.067		-0.368	-0.807	-0.638
problem_list:288.65	Basophilia	-1.066				-0.103
problem_list:292.89	Other specified drug-induced mental disorders	1.043				0.630
meds_administered:2708	LOPERAMIDE 2 MG CAP	1.040		0.831	0.939	0.723
meds_administered:105813	MESALAMINE 400 MG CAPSULE,DELAYED RELEASE	1.038		0.526	0.665	0.791
meds_reported:28730	BISMUTH TRIBROM-PETROLATUM,WH 5" X 9" BANDAGE	-1.004			-0.613	-0.438
meds_reported:10880	HYOSCYAMINE ER 0.375 MG TABLET,EXTENDED RELEASE,12 HR	1.001		0.990	1.220	0.761
meds_reported:19847	VANCOMYCIN 500 MG/100 ML IN DEXTROSE 5 % INTRAVENOUS PIGGYBACK	-0.995				-0.903
problem_list:558.9	Other and unspecified noninfectious gastroenteritis and colitis	0.989		0.419	0.429	0.768
meds_administered:400092	AMPHOTERICIN B LIPOSOME IVPB	0.984		1.298	1.426	1.153
meds_administered:400642	DEXTROSE 10%, W/WO SALINE/ADDITIVES	0.973		0.354	0.777	0.360
surgery_cases:VENOUS ACCESS INS/ADULT/GS		0.944		1.231	1.499	1.388
problem_list:621.5	Intrauterine synechiae	0.943		0.599	0.833	0.649
meds_reported:410145	PANTOPRAZOLE 40 MG IN NS 100 ML (MSQ)	-0.927		-0.343	-0.725	-0.615
meds_reported:4039	CEFAZOLIN 1 GRAM INTRAVENOUS SOLUTION	-0.925		-0.479	-1.051	-0.815
meds_reported:28227	ACYCLOVIR 5 % TOPICAL CREAM	0.922		0.608	0.787	0.685
problem_list:513.0	Abscess of lung	0.921	2.636		1.543	1.364
meds_administered:9975	PROPRANOLOL 40 MG TABLET	0.920		0.338	0.655	0.499
problem_list:883.0	Open wound of finger(s), without mention of complication	0.911				0.517
problem_list:205.00	Acute myeloid leukemia, without mention of having achieved remission	0.909	0.857	1.130	1.089	0.962
surgery_cases:FLEXIBLE SIGMOIDOSCOPY/BIOPSY/BRUSHING		0.906		2.389	1.337	0.785
problem_list:537.0	Acquired hypertrophic pyloric stenosis	0.904				0.284
surgery_cases:ILEOSTOMY/LAPAROSCOPY		0.891	2.130		0.737	0.481
meds_administered:400029	CEFTAZIDIME 1 G IVPB	0.885				0.954
problem_list:197.6	Secondary malignant neoplasm of retroperitoneum and peritoneum	0.883		1.357	1.130	1.043
problem_list:783.7	Adult failure to thrive	0.872		0.608	0.678	0.512
problem_list:555.1	Regional enteritis of large intestine	0.866		0.881	0.813	0.778
meds_administered:19994	RANITIDINE 15 MG/ML SYRUP	0.850		0.290	0.258	0.150
meds_reported:88450	ACETAMINOPHEN 650 MG/20.3 ML ORAL SOLN	0.847		0.892	1.106	1.021
abnormal_labs:2040-OCCULT BLOOD, STOOL		0.846		0.346	0.465	0.263
problem_list:367.0	Hypermetropia	0.842				0.384
meds_reported:45378	CLARITIN ORAL	0.840		0.120	0.643	0.455
meds_reported:747	MESALAMINE 4 GRAM/60 ML ENEMA	0.836		1.405	1.347	0.953
meds_administered:8022	BECLOMETHASONE DIPROPIONATE 80 MCG/ACTUATION AEROSOL INHALER	0.830				0.010
problem_list:787.22	Dysphagia, oropharyngeal phase	0.823		0.233	0.446	0.379
problem_list:212.6	Benign neoplasm of thymus	0.818				0.322
problem_list:442.81	Aneurysm of artery of neck	0.817				0.547
meds_reported:9812	FLAXSEED OIL 1,000 MG CAPSULE	0.817		0.384	0.620	0.476
problem_list:216.8	Benign neoplasm of other specified sites of skin	-0.810				-0.144
meds_administered:12205	METHYLPREDNISOLONE SODIUM	0.803		0.723	1.053	0.704

Variable	Description	Model coefficients for each case definition				
		by ICD-9 code	by EIA (+)	by PCR (+)	EIA or PCR (+)	by any of these
	SUCC 1,000 MG INTRAVENOUS SOLUTION					
meds_reported:34645	TRYPsin-BALSAM-CASTOR OIL 0.12 MG-87 MG/GRAM TOPICAL SPRAY	-0.801		-2.479	-4.149	-3.007
meds_reported:31131	SACCHAROMYCES BOULARDII 250 MG CAPSULE	0.786	0.773	0.455	0.824	0.883
surgery_cases:ESOPHAGECTOMY		0.780		1.873	1.958	1.799
meds_reported:101394	ENSURE CLEAR ORAL	0.776				0.828
meds_reported:9542	MESALAMINE 400 MG TAB, DELAYED RELEASE	0.773		1.003	1.001	0.824
meds_administered:3298	MICONAZOLE NITRATE 2 % TOPICAL CREAM	0.764				0.258
meds_administered:6448	ALUMINUM ACETATE TOPICAL SOLN	0.755				0.379
meds_administered:20636	MODAFINIL 100 MG TAB	0.752	-0.098	0.278	0.077	0.930
meds_reported:76221	HYDROMORPHONE (PF) 2 MG/ML INJECTION SOLUTION	0.745				0.357
meds_reported:60511	SINEMET ORAL	0.742		0.387	0.595	0.421
meds_administered:18563	LACTOBACILLUS RHAMNOSUS GG 10 BILLION CELL CAPSULE	0.731		0.888	0.953	0.748
problem_list:V49.86	Do not resuscitate status	0.729	1.469		0.705	0.538
problem_list:V13.59	Personal history of other musculoskeletal disorders	0.727		0.358	0.500	0.330
meds_reported:4952	RIZATRIPTAN 10 MG TAB	0.725		0.196	0.514	0.316
meds_administered:400740	FOSAPREPITANT 150/DEX 12/ZOFRAN 8 COMBO	0.725		0.096	0.177	0.352
problem_list:070.1	Viral hepatitis A without mention of hepatic coma	0.719		0.695	0.329	0.238
abnormal_labs:2616-ATYPICAL LYMPHOCYTES		0.712		0.016	0.003	
meds_reported:3545	BENZONATATE 200 MG CAPSULE	0.709		0.242	0.532	0.287
meds_reported:72782	DARBEPOETIN ALFA 200 MCG/0.4 ML IN POLYSORBATE INJECTION SYRINGE	-0.707				-0.695
problem_list:318.2	Profound intellectual disabilities	0.699	0.250		0.370	0.192
problem_list:211.1	Benign neoplasm of stomach	0.696	1.290		0.564	0.328
problem_list:357.9	Unspecified inflammatory and toxic neuropathy	0.682				0.354
problem_list:379.99	Other ill-defined disorders of eye	0.676	1.568		0.525	0.287
problem_list:995.7	Other adverse food reactions, not elsewhere classified	0.676				0.307
problem_list:363.62	Expulsive choroidal hemorrhage	-0.675			-0.536	-0.701
meds_administered:88448	ACETAMINOPHEN 160 MG/5 ML (5 ML) ORAL SOLUTION	0.674				
meds_administered:34674	CINACALCET 30 MG TAB	0.674		0.282	0.298	0.347
problem_list:556.9	Ulcerative colitis, unspecified	0.664		0.257	0.234	0.489
meds_administered:91038	FERROUS GLUCONATE 324 MG (37.5 MG IRON) TABLET	0.655		0.593	0.843	0.990
meds_reported:783	CLOTRIMAZOLE 10 MG TROCHE	0.651	5.554			
meds_administered:1199	DIPYRIDAMOLE-ASPIRIN ER 200 MG-25 MG MULTIPHASE 12 HR CAP	0.648		0.175	0.219	0.002
surgery_cases:CYSTECTOMY+ILEALCONDUIT		0.645		1.135	0.940	0.795
meds_reported:87514	SEVELAMER CARBONATE 0.8 GRAM ORAL POWDER PACKET	0.643			0.287	0.085
meds_reported:34674	CINACALCET 30 MG TAB	0.642		0.284	0.252	0.373
problem_list:212.7	Benign neoplasm of heart	0.633				0.122
problem_list:238.79	Other lymphatic and hematopoietic tissues	0.627				
meds_administered:4831	CEFTRIAXONE 250 MG SOLUTION FOR INJECTION	0.625		0.056	0.485	0.246
meds_administered:25759	HYDROMORPHONE 4 MG/ML INJECTION SYRINGE	0.622		0.342	0.572	0.397
problem_list:696.0	Psoriatic arthropathy	0.618				0.268
problem_list:272.5	Lipoprotein deficiencies	0.618		0.541	0.517	0.315
problem_list:357.6	Polyneuropathy due to drugs	0.616				0.366
problem_list:599.7		0.610	1.222		0.461	0.205

Variable	Description	Model coefficients for each case definition				
		by ICD-9 code	by EIA (+)	by PCR (+)	EIA or PCR (+)	by any of these
meds_reported:76695	PRENATAL VIT WITHOUT CALCIUM- IRON GLUC-FOLIC ACID 30 MG-800 MCG TAB	0.608	7.580		0.536	0.300
meds_reported:47365	DILANTIN ORAL	0.607		0.144	0.327	0.169
meds_reported:58848	PROTONIX ORAL	0.599				0.665
meds_reported:13171	INFLIXIMAB 100 MG IV SOLUTION	0.598		0.933	0.976	0.762
meds_reported:18265	CARBIDOPA 25 MG-LEVODOPA 100 MG TABLET	0.597		0.250	0.240	0.202
meds_reported:17268	BUDESONIDE DR & ER 3 MG CAP,DELAYED & EXTENDED RELEASE	0.590		0.151	0.186	0.421
problem_list:379.24	Other vitreous opacities	0.578				0.180
problem_list:530.9	Unspecified disorder of esophagus	0.571				
problem_list:719.06	Effusion of joint, lower leg	0.563	1.161		0.363	0.172
meds_administered:400556	FAMOTIDINE IVPB	0.562		0.271	0.388	0.228
problem_list:690.18	Other seborrheic dermatitis	0.559	1.835		0.425	0.204
problem_list:556.5	Left-sided ulcerative (chronic) colitis	0.552				0.073
problem_list:535.60	Duodenitis, without mention of hemorrhage	0.551				0.233
meds_reported:6918	AZATHIOPRINE 50 MG TABLET	0.550		0.571	0.687	0.356
meds_reported:4733	METHYLPHENIDATE 5 MG TABLET	0.550				0.349
meds_reported:10134	MINERAL OIL ENEMA	0.548		0.079	0.263	0.092
problem_list:E980.5	Poisoning by unspecified drug or medicinal substance, undetermined whether accidentally or purposely inflicted	0.545		0.199	0.279	0.571
problem_list:277.30	Amyloidosis, unspecified	0.540		0.261	0.417	0.254
meds_reported:1084	VALGANCICLOVIR 450 MG TABLET	0.539				
meds_reported:42453	ATIVAN ORAL	0.538				0.200
problem_list:785.50	Shock, unspecified	0.537		1.334	1.142	1.246
meds_administered:2738	LAMIVUDINE 100 MG TABLET	0.533		0.113	0.479	0.166
problem_list:572.0	Abscess of liver	0.527				0.013
meds_administered:10380	ONDANSETRON HCL 4 MG/5 ML ORAL SOLN	0.526		0.235	0.426	0.268
meds_reported:13705	HYDROCORTISONE 100 MG/60 ML ENEMA	0.520		1.744	1.905	1.528
meds_reported:3298	MICONAZOLE NITRATE 2 % TOPICAL CREAM	0.520		0.043		
surgery_cases:VENOUS ACCESS INS/ADULT/VASC		0.519	1.843		1.138	1.145
meds_administered:4033	FLUCONAZOLE 400 MG/200 ML IN SODIUM CHLORIDE (ISO-OSM) IV PIGGY BACK	0.516		0.209	0.243	0.237
problem_list:339.00	Cluster headache syndrome, unspecified	0.515	3.481		0.411	0.187
problem_list:238.76	Myelofibrosis with myeloid metaplasia	0.515				
meds_administered:14588	MINOXIDIL 10 MG TABLET	0.514		0.181	0.361	0.158
meds_administered:2119	PREDNISOLONE SODIUM PHOSPHATE 15 MG/5 ML ORAL SOLUTION	0.502				
problem_list:277.39	Other amyloidosis	0.501		0.233	0.385	0.247
problem_list:999.31	Other and unspecified infection due to central venous catheter	0.497				0.102
meds_administered:72783	DARBEPOETIN ALFA 40 MCG/0.4 ML IN POLYSORBATE INJECTION SYRINGE	0.495				
problem_list:V77.0	Screening for thyroid disorders	0.495	1.188		0.238	0.133
meds_administered:709	FLUCONAZOLE 100 MG TABLET	0.495				
meds_administered:17041	NYSTATIN 100,000 UNIT/GRAM TOPICAL POWDER	0.486		0.502	0.511	0.575
meds_administered:7237	LEVOFLOXACIN 250 MG TABLET	0.481		0.105	0.141	0.013
meds_reported:4912	SPIRONOLACTONE 100 MG TABLET	0.467				
meds_administered:9542	MESALAMINE 400 MG TAB, DELAYED RELEASE	0.465		0.426	0.389	0.343
meds_administered:14235	NS WITH POTASSIUM CHLORIDE 20	0.461		0.272	0.242	0.218

Variable	Description	Model coefficients for each case definition				
		by ICD-9 code	by EIA (+)	by PCR (+)	EIA or PCR (+)	by any of these
	MEQ/L IV					
meds_administered:17056	COLLAGENASE CLOSTRIDIUM HISTOLYTICUM 250 UNIT/G OINTMENT	0.458	2.321	0.616	0.899	0.754
meds_reported:1464	PREDNISON 10 MG TABLET	0.453		0.144	0.113	0.471
meds_reported:26068	VALSARTAN 40 MG TABLET	0.451	2.132	0.373	1.090	0.936
problem_list:555.0	Regional enteritis of small intestine	0.450		0.571	0.322	0.178
meds_reported:27713	AZATHIOPRINE 100 MG TAB	0.440		0.559	0.435	0.289
meds_administered:97513	POTASSIUM PHOSPHATE IN 0.9 % SODIUM CHLORIDE 15 MMOL/250 ML IV	0.438		0.134	0.168	0.062
meds_administered:93427	HYDROCORTISONE SOD SUCCINATE (PF) 100 MG/2 ML SOLUTION FOR INJECTION	0.431		0.353	0.403	0.500
problem_list:536.3	Gastroparesis	0.430		0.561	0.398	0.213
meds_reported:27423	ADALIMUMAB 40 MG/0.8 ML SUBCUTANEOUS SYRINGE KIT	0.426		0.046	0.083	0.214
problem_list:211.5	Benign neoplasm of liver and biliary passages	0.424	2.888		0.405	0.077
problem_list:528.00	Stomatitis and mucositis, unspecified	0.420		0.065		
meds_administered:14993	MERCAPTOPYRINE 50 MG TAB	0.420		0.425	0.491	0.278
meds_administered:8256	ACYCLOVIR 800 MG TABLET	0.411		0.168	0.194	0.211
meds_administered:764	D5W WITH POTASSIUM CHLORIDE 20 MEQ/L IV	0.404		0.020	0.035	0.015
problem_list:249.80	Secondary diabetes mellitus with other specified manifestations, not stated as uncontrolled, or unspecified	0.402		0.362	0.140	0.052
problem_list:338.19	Other acute pain	0.384		0.069	0.275	0.113
problem_list:564.89	Other functional disorders of intestine	0.379		0.327	0.445	0.152
meds_administered:467	MEDROXYPROGESTERONE 10 MG TABLET	0.378			0.185	
meds_administered:31131	SACCHAROMYCES BOULARDII 250 MG CAPSULE	0.376		0.704	0.486	0.787
meds_administered:5093	CIPROFLOXACIN 400 MG/200 ML IN DEXTROSE 5 % INTRAVENOUS PIGGYBACK	0.376		0.156	0.156	0.187
abnormal_labs:1401-IRON, SERUM		0.373	0.079	0.180	0.215	0.291
abnormal_labs:2622-BLASTS		0.371	1.043	0.058	0.655	0.483
meds_administered:400328	SODIUM BICARBONATE INFUSION	0.370		0.644	0.746	0.612
meds_administered:27449	METHYLPREDNISOLONE SODIUM SUCC 40 MG/ML SOLUTION FOR INJECTION	0.369				0.244
problem_list:446.6	Thrombotic microangiopathy	0.368				
problem_list:425.9	Secondary cardiomyopathy, unspecified	0.368			0.004	
meds_administered:7810	TRAMADOL 50 MG TABLET	0.362			0.003	0.174
problem_list:368.13	Visual discomfort	0.362			0.018	
problem_list:294.9	Unspecified persistent mental disorders due to conditions classified elsewhere	0.359				0.003
abnormal_labs:210-ERYTHROCYTE SED. RATE		0.355	0.184	0.092	0.160	0.224
meds_reported:74491	MESALAMINE 1.2 G TABLET, DELAYED RELEASE	0.349		0.177	0.238	0.236
meds_administered:5575	METOCLOPRAMIDE 5 MG/5 ML ORAL SOLN	0.343			0.015	
meds_reported:56313	ONDANSETRON HCL ORAL	-0.340		-0.061	-0.861	-0.530
abnormal_labs:724-CORTISOL, SERUM		0.339		0.137		
meds_reported:37780	MESALAMINE 1,000 MG RECTAL SUPPOSITORY	0.338		0.383	0.282	0.319
meds_reported:38701	CALCIUM CARBONATE-VITAMIN D3 600 MG CALCIUM-200 UNIT CAPSULE	0.333			0.172	0.055
meds_reported:10393	LORAZEPAM 0.5 MG TABLET	0.328				0.024
meds_reported:73128	ZINC SULFATE 220 MG (50 MG) CAP	0.326		0.382	0.522	0.403
problem_list:293.0	Delirium due to conditions classified elsewhere	0.325		0.161	0.291	0.174
meds_reported:80973	FENOFIBRATE 120 MG TABLET	0.324		0.896	1.332	1.155

Variable	Description	Model coefficients for each case definition				
		by ICD-9 code	by EIA (+)	by PCR (+)	EIA or PCR (+)	by any of these
meds_reported:58300	PREDNISONE ORAL	-0.323			-0.080	-0.253
meds_reported:7901	MORPHINE (PF) 1 MG/ML INJECTION	0.321		1.166	0.604	0.095
meds_administered:3641	DIATRIZOATE MEGLUMINE & SODIUM 66 %-10 % ORAL SOLN	0.321		0.298	0.325	0.269
meds_administered:7614	FELBAMATE 600 MG TABLET	-0.320				
meds_administered:3474	NYSTATIN 100,000 UNIT/G OINTMENT	0.317		0.417	0.400	0.351
meds_administered:13192	FERROUS SULFATE 300 MG (60 MG IRON)/5 ML ORAL LIQUID	0.310		0.195	0.115	0.337
meds_administered:27485	BUPRENORPHINE 2 MG SUBLINGUAL TABLET	0.306		0.135	0.231	0.145
meds_reported:31282	HYDROCORTISONE ACETATE 10 % (80 MG) RECTAL FOAM	-0.304		-0.003	-0.357	-0.268
meds_administered:17805	SCOPOLAMINE 1.5 MG 72 HR TRANSDERM PATCH	0.303				
meds_administered:9394	NEOMYCIN-BACITRACIN-POLYMYXN 3.5 MG-400 UNIT-10,000 UNIT/GRAM EYE OINT	-0.302				
meds_administered:38797	SILDENAFIL 20 MG TABLET	0.300				
meds_reported:77810	INSULIN LISPRO SUBQ	0.298		0.132	0.063	0.019
abnormal_labs:2618-BAND CELL		0.297	0.483	0.206	0.335	0.331
meds_reported:13962	FUROSEMIDE 40 MG/5 ML ORAL SOLUTION	0.297		0.946	0.481	0.294
problem_list:V42.81	Bone marrow replaced by transplant	0.294				0.137
meds_administered:14894	BETAMETHASONE DIPROPIONATE 0.05 % TOPICAL CREAM	0.294			0.124	
meds_reported:10466	HYDROCORTISONE 100 MG SOLUTION FOR INJECTION	0.290				
meds_reported:79867	FOLIC ACID (BULK) MISC	-0.287				-0.079
abnormal_labs:1146-LACTATE, BLOOD		0.286	-0.003			
problem_list:278.1	Localized adiposity	0.285		0.603	0.152	
meds_administered:17145	BACITRACIN-POLYMYXIN B 500 UNIT-10,000 UNIT/G OINTMENT	0.285		0.418	0.415	0.364
meds_administered:10930	GENTAMICIN 0.3 % EYE DROPS	0.284				
meds_reported:17829	METHYLPREDNISOLONE 4 MG TABLETS IN A DOSE PACK	0.282				1.039
meds_administered:7531	ENALAPRILAT 1.25 MG/ML IV	0.280				
problem_list:428.1	Left heart failure	0.278		0.008	0.036	
problem_list:555.9	Regional enteritis of unspecified site	0.278		0.225	0.239	0.196
meds_administered:12146	DEXTROSE 5 %-0.9 % SODIUM CHLORIDE IV	0.275	0.313	0.202	0.316	0.246
meds_reported:1312	NYSTATIN 100,000 UNIT/ML ORAL SUSP	0.269	-0.133	0.375	0.396	0.632
meds_administered:76038	PEG 3350-ELECTROLYTES 240 G-22.72 G-6.72 G-5.84 G ORAL SOLUTION	0.269		0.009		0.180
abnormal_labs:2662-TOTAL NUCLEATED CELL		0.268	-0.007	0.342	0.307	0.328
meds_administered:400036	FERRIC GLUCONATE IVPB	0.262	-0.314			0.004
problem_list:789.00	Abdominal pain, unspecified site	0.259		0.224	0.278	0.237
meds_administered:12214	ERYTHROMYCIN 5 MG/GRAM (0.5 %) EYE OINTMENT	0.256			0.072	
meds_administered:6918	AZATHIOPRINE 50 MG TABLET	0.251				0.017
meds_administered:10113	POTASSIUM CHLORIDE 10 MEQ/100 ML IV PIGGY BACK	0.249		0.299	0.333	0.310
meds_reported:14993	MERCAPTOPYRINE 50 MG TAB	0.245		0.233	0.246	0.223
meds_reported:111338	CLONIDINE HCL (BULK) MISC	-0.240				
meds_reported:8251	GLYCERIN (CHILD) RECTAL SUPPOSITORY	-0.238				
abnormal_labs:2693-MONOCYTE		0.238	0.369	0.150	0.318	0.344
meds_reported:20636	MODAFINIL 100 MG TAB	0.236				0.359
meds_administered:31282	HYDROCORTISONE ACETATE 10 % (80 MG) RECTAL FOAM	0.235				0.034
meds_reported:9438	ALENDRONATE 35 MG TAB	0.232			0.138	0.009
problem_list:788.62	Slowing of urinary stream	0.230			0.005	

Variable	Description	Model coefficients for each case definition				
		by ICD-9 code	by EIA (+)	by PCR (+)	EIA or PCR (+)	by any of these
problem_list:788.63	Urgency of urination	0.221	0.188		0.245	0.050
meds_administered:18681	ONDANSETRON 4 MG DISINTEGRATING TABLET	0.217	0.175	0.127	0.288	0.236
meds_administered:13236	WARFARIN 2 MG TABLET	0.216		0.195	0.345	0.152
problem_list:438.89	Other late effects of cerebrovascular disease	0.215				
problem_list:599.60	Urinary obstruction, unspecified	0.214		0.929	1.189	0.984
meds_reported:36912	MESALAMINE ER 500 MG CAP	0.209		0.319	0.328	0.081
meds_reported:38613	FENTANYL 12 MCG/HR TRANSDERM PATCH	0.209		0.424	0.318	0.240
meds_administered:400532	METHYLPREDNISOLONE IV BURETROL SYRINGE 62.5 MG/ML STERILE DIL	0.204			0.076	
meds_administered:20478	TACROLIMUS 0.5 MG CAP	0.198		0.201	0.330	0.568
problem_list:781.94	Facial weakness	0.196				
meds_administered:13309	CARBAMAZEPINE 100 MG CHEWABLE TAB	0.194				
problem_list:434.01	Cerebral thrombosis with cerebral infarction	0.193		1.000	1.270	1.096
meds_administered:9940	POTASSIUM CHLORIDE 20 MEQ ORAL PACKET	0.191		0.226	0.276	0.224
meds_reported:93023	LEVOTHYROXINE 125 MCG CAP	0.191			0.033	
abnormal_labs:1140-PROTEIN TOTAL		0.190	0.113	0.133	0.150	0.201
problem_list:472.0	Chronic rhinitis	0.190	0.464			
meds_reported:18681	ONDANSETRON 4 MG DISINTEGRATING TABLET	0.189				
problem_list:333.90	Unspecified extrapyramidal disease and abnormal movement disorder	0.188	0.417		0.127	
problem_list:238.4	Polycythemia vera	0.187		0.561	0.378	0.280
meds_reported:8022	BECLOMETHASONE DIPROPIONATE 80 MCG/ACTUATION AEROSOL INHALER	0.186			0.278	1.343
meds_reported:18508	PHENOBARB-HYOSCYAMN-ATROPINE-SCOP 16.2 MG-0.1037 MG-0.0194 MG TABLET	0.186				
abnormal_labs:2104-HGB A2		-0.185			-0.159	-0.358
meds_reported:12204	PANTOPRAZOLE 40 MG TAB, DELAYED RELEASE	0.185		0.272	0.289	0.250
meds_reported:9120	DRONABINOL 2.5 MG CAP	0.184				
problem_list:173.31	Basal cell carcinoma of skin of other and unspecified parts of face	0.181				
meds_administered:5292	PREDNISONE 5 MG TABLET	0.180		0.060	0.048	0.012
problem_list:V49.76	Above knee amputation status	0.179				
meds_administered:400183	MELPHALAN CHEMO INFUSION	0.178		0.047		
meds_administered:747	MESALAMINE 4 GRAM/60 ML ENEMA	-0.174				
meds_reported:13235	PREDNISONE 50 MG TABLET	0.171			0.123	
problem_list:477.8	Allergic rhinitis due to other allergen	0.171				
problem_list:332.0	Paralysis agitans	0.168	0.206		0.120	0.102
meds_administered:22475	B-COMPLEX WITH VITAMIN C CAP	0.166		0.355	0.504	0.379
problem_list:596.51	Hypertonicity of bladder	0.165	0.106	0.432	0.845	0.700
meds_reported:13236	WARFARIN 2 MG TABLET	0.165		0.027		
meds_reported:19388	DICYCLOMINE 10 MG CAP	0.164		0.055	0.201	0.004
meds_administered:400284	SODIUM CHLORIDE 0.9 % IV BOLUS	0.163	-0.113	0.183	0.146	0.138
abnormal_labs:2805-KETONE		0.162	0.081	0.132	0.165	0.129
abnormal_labs:1403-TIBC		0.162		0.028	0.057	0.130
meds_reported:9554	OXYCODONE-ACETAMINOPHEN 5 MG-325 MG TABLET	0.162		0.106	0.157	0.133
abnormal_labs:2620-MYELOCYTE		0.162				0.019
meds_administered:9742	AMILORIDE 5 MG TAB	0.160				
meds_administered:18265	CARBIDOPA 25 MG-LEVODOPA 100 MG TABLET	0.157				
abnormal_labs:2619-METAMYELOCYTE		0.155	0.100	0.096	0.106	0.125
problem_list:799.3	Debility, unspecified	0.154	0.515			
admission_sources:Non Health Care Facility		-0.149	-0.144	-0.113	-0.163	-0.184

Variable	Description	Model coefficients for each case definition				
		by ICD-9 code	by EIA (+)	by PCR (+)	EIA or PCR (+)	by any of these
meds_administered:35104	MIRTAZAPINE 7.5 MG TABLET	0.145				
meds_administered:15788	BUMETANIDE 1 MG TABLET	0.144				
admission_sources:Transfer from a Hospital		0.144	0.229	0.189	0.260	0.329
meds_reported:16390	PRAVASTATIN 20 MG TABLET	0.143				
meds_administered:20623	ESOMEPRAZOLE MAGNESIUM 20 MG CAP, DELAYED RELEASE	0.142			0.056	0.163
meds_reported:45341	CITRACAL + D ORAL	0.141			0.013	
meds_reported:11960	DEXAMETHASONE 2 MG TABLET	0.140				
meds_administered:12287	MIRTAZAPINE 30 MG TABLET	0.139				
meds_administered:400160	HYDROMORPHONE IVPB (RESTRICTED DOSING)	0.137				0.169
abnormal_labs:4277-HEPATITIS C VIRUS AB		0.136				
abnormal_labs:1105-ALBUMIN		0.134	0.272	0.170	0.235	0.209
meds_administered:6958	HETASTARCH 6 % IN 0.9 % SODIUM CHLORIDE IV	0.134				
meds_administered:1879	METOCLOPRAMIDE 5 MG/ML INJECTION	0.133	0.108		0.038	0.026
meds_reported:108285	PHENYLEPHRINE 0.25 %-MINERAL OIL 14 %-PETROLATM 74.9 % RECTAL OINTMENT	0.131				
meds_reported:12421	FERROUS SULFATE 325 MG (65 MG IRON) TAB	0.131		0.273	0.269	0.193
meds_reported:27464	GLUCOSAMINE-CHONDROIT-VIT C- MN 500 MG-400 MG CAPSULE	0.130				
meds_reported:11681	CARBAMAZEPINE ER 200 MG 12 HR TAB	0.128			0.090	
problem_list:006.9	Amebiasis, unspecified	0.123			0.234	0.069
meds_administered:83364	CEFEPIME 2 GRAM/100 ML IN DEXTROSE (ISO-OSMOTIC) INTRAVENOUS PIGGYBACK	0.123		0.408	0.374	0.270
meds_reported:6941	PHENYTOIN SODIUM EXTENDED 100 MG CAPSULE	0.122			0.299	0.484
meds_reported:55965	NOVOLOG MIX 70-30 SUBQ	0.121				
problem_list:294.21	Dementia, unspecified, with behavioral disturbance	0.120	1.462			
abnormal_labs:1783-LIPASE		0.119	0.157		0.030	0.051
meds_administered:4702	FAMOTIDINE 40 MG TABLET	0.119		0.193	0.342	0.190
meds_reported:49280	FLAGYL ORAL	0.119				
problem_list:787.20	Dysphagia, unspecified	0.118	-0.096	0.264	0.151	0.294
admission_sources:Emergency Room		0.118	0.078	0.037	0.081	0.080
meds_reported:29117	ASCORBIC ACID 500 MG/5 ML SYRUP	0.118				
meds_administered:1077	TUBERCULIN PPD 5 TUB. UNIT/0.1 ML INTRADERMAL INJECTION SOLUTION	0.117				
meds_reported:54203	METOPROLOL SUCCINATE ORAL	0.116		0.241	0.226	0.115
meds_administered:10685	LEVOTHYROXINE 200 MCG INTRAVENOUS SOLUTION	0.116				
meds_reported:19453	CALCITRIOL 0.25 MCG CAPSULE	0.114		0.543	0.529	0.548
problem_list:780.61	Fever presenting with conditions classified elsewhere	0.112		0.177	0.194	0.074
meds_administered:400165	IMIPENEM-CILASTATIN 250 MG IVPB	0.111		0.088	0.178	0.003
meds_reported:21104	WHITE PETROLATUM-MINERAL OIL TOPICAL CREAM	-0.110			-0.027	
meds_reported:24788	HEPARIN (PORCINE) 5,000 UNIT/0.5 ML SYRINGE	0.109		0.110	0.080	0.122
abnormal_labs:20243-LYMPHOCYTE		0.108				
meds_reported:855	FENTANYL 50 MCG/HR TRANSDERM PATCH	0.107			0.236	0.058
meds_administered:14016	NPH INSULIN HUMAN RECOMB 100 UNIT/ML SUSP, SUB-Q INJ	0.106				
meds_reported:44104	CALCITRIOL ORAL	0.106				
meds_administered:24201	VORICONAZOLE 200 MG TABLET	0.106		0.178		0.193
meds_reported:57784	PIRACETAM (BULK) MISC	-0.102			-0.456	-0.075
meds_administered:4432	FLUCONAZOLE 200 MG TABLET	0.099		0.412	0.375	0.286

Variable	Description	Model coefficients for each case definition				
		by ICD-9 code	by EIA (+)	by PCR (+)	EIA or PCR (+)	by any of these
problem_list:E933.1	Antineoplastic and immunosuppressive drugs causing adverse effects in therapeutic use	-0.098		-0.012	-0.210	-0.308
problem_list:793.6	Nonspecific (abnormal) findings on radiological and other examination of abdominal area, including retroperitoneum	0.096		0.139		
meds_reported:6524	CODEINE 15 MG TABLET	-0.096				-0.183
meds_administered:16822	SODIUM CHLORIDE 0.9 % INTRAVENOUS SOLUTION	0.090		0.077	0.054	0.063
meds_reported:12221	VENLAFAXINE 37.5 MG TABLET	0.088				
meds_administered:14951	DOCUSATE SODIUM 100 MG CAPSULE	-0.086	-0.044	-0.059	-0.090	-0.108
problem_list:281.9	Unspecified deficiency anemia	0.084				
problem_list:V58.65	Long-term (current) use of steroids	0.084				
meds_reported:12097	BISACODYL 10 MG RECTAL SUPPOSITORY	-0.082				
meds_administered:19073	HEPARIN (PORCINE) 5,000 UNIT/ML INJECTION	0.082		0.064	0.044	0.058
abnormal_labs:2608-RED DISTRIB. WIDTH		0.082	0.162	0.075	0.133	0.137
meds_reported:12069	FERROUS GLUCONATE 325 MG (37 MG IRON) TABLET	0.080		0.140	0.238	0.094
problem_list:726.32	Lateral epicondylitis	0.079	1.400			
meds_administered:400656	TPN ADULT	0.079		1.017	1.031	1.026
meds_administered:300040	GRADE 0 MOUTHWASH	0.077		0.304	0.245	0.216
abnormal_labs:5808-TROPONIN-I		-0.075			-0.055	-0.092
abnormal_labs:2612-LYMPHOCYTE		0.074	0.067	0.064	0.100	0.174
problem_list:745.2	Tetralogy of fallot	0.073	0.153			
problem_list:V49.75	Below knee amputation status	0.072			0.106	0.012
meds_administered:94225	LACTULOSE 20 GRAM/30 ML ORAL SOLN	0.070		0.128	0.187	0.134
problem_list:719.54	Stiffness of joint, not elsewhere classified, hand	0.070		0.251		
meds_administered:5819	LACTATED RINGERS IV	-0.069		-0.064	-0.087	-0.102
meds_administered:26050	ESCITALOPRAM 10 MG TAB	0.069				
abnormal_labs:113-WB POTASSIUM - VEN		0.068		0.009		
meds_administered:14455	FENTANYL (PF) 50 MCG/ML INJECTION	-0.067		-0.016	-0.031	-0.050
abnormal_labs:2661-RBC		0.067		0.126	0.133	0.169
abnormal_labs:2610-MEAN PLT VOLUME		0.066		0.005		0.033
problem_list:710.8	Other specified diffuse diseases of connective tissue	0.065				
abnormal_labs:1150-UREA NITROGEN		0.065	0.088	0.074	0.104	0.122
meds_administered:37694	OXYTOCIN 20 UNIT/1000 ML IN 0.9 % SODIUM CHLORIDE IV	-0.064		-0.063	-0.082	-0.091
meds_reported:17957	ZINC SULFATE 220 MG CAPSULE	0.063				
surgery_cases:CHOLECYSTECTOMY		0.063				
problem_list:205.02	Acute myeloid leukemia, in relapse	0.063		0.659	0.833	0.567
meds_reported:12392	TELMISARTAN 40 MG TABLET	0.061			0.083	
abnormal_labs:2652-LYMPHOCYTE %		0.060	0.113	0.024	0.099	0.124
meds_administered:17305	HYDROXYCHLOROQUINE 200 MG TABLET	0.059				
abnormal_labs:2621-PROMYELOCYTE		0.058	1.021			
meds_administered:689	FUROSEMIDE 10 MG/ML INJECTION	-0.058				
meds_reported:42825	BACTRIM DS ORAL	-0.055			-0.062	
meds_reported:12524	CONJUGATED ESTROGENS 0.625 MG/GRAM VAGINAL CREAM	0.055			0.103	
meds_administered:1933	ROPINIROLE 1 MG TABLET	0.051				
meds_reported:97819	GEL BASE NO.41 (BULK)	0.047		0.045		
abnormal_labs:3369-WB CA++ - ART(POCT)		-0.047				
meds_administered:1464	PREDNISONE 10 MG TABLET	0.045		0.074	0.102	
meds_administered:8113	KETOROLAC 30 MG/ML (1 ML) INJECTION	-0.045		-0.063	-0.085	-0.092
problem_list:V44.1	Gastrostomy status	0.044		0.002		0.152

Variable	Description	Model coefficients for each case definition				
		by ICD-9 code	by EIA (+)	by PCR (+)	EIA or PCR (+)	by any of these
meds_administered:10518	CEFAZOLIN IN DEXTROSE (ISO-OSMOTIC) 1 GRAM/50 ML IV PIGGY BACK	-0.043		-0.009	-0.019	-0.037
meds_reported:10262	PRIMIDONE 250 MG TABLET	0.039				
meds_reported:26086	SODIUM OXYBATE 500 MG/ML ORAL SOLUTION	-0.039			-0.306	-0.032
meds_administered:19767	ELECTROLYTE-A IV	-0.038		-0.003	-0.020	-0.037
meds_administered:1311	SENNOSIDES 8.6 MG TABLET	-0.036			-0.027	-0.059
meds_reported:53194	LOMOTIL ORAL	0.036				
meds_administered:300121	METOPROLOL TARTRATE 12.5 MG HALF TABLET	0.036				
abnormal_labs:20852-LYMPHOCYTE		0.035				
problem_list:276.8	Hypopotassemia	0.035				0.096
problem_list:786.50	Chest pain, unspecified	-0.035	-0.013		-0.034	-0.046
meds_administered:400304	CUSTOM IV FLUID	0.034		0.109	0.079	0.080
meds_reported:2417	CLINDAMYCIN 300 MG CAPSULE	0.034				
problem_list:283.9	Acquired hemolytic anemia, unspecified	-0.034				
meds_administered:5511	SODIUM CHLORIDE 0.45 % INTRAVENOUS SOLUTION	-0.033		-0.049	-0.090	-0.099
abnormal_labs:1116-CALCIUM		0.033	0.075	0.004	0.010	0.014
abnormal_labs:6006-HEMOGLOBIN A1C		-0.033	-0.027		-0.056	-0.069
meds_reported:14588	MINOXIDIL 10 MG TABLET	0.032				
meds_administered:19453	CALCITRIOL 0.25 MCG CAPSULE	0.031		0.098	0.103	0.018
abnormal_labs:1127-GLUCOSE		-0.029			-0.013	-0.034
problem_list:713.5	Arthropathy associated with neurological disorders	0.029			0.025	
meds_administered:400106	LORAZEPAM IVPB	0.028		0.325	0.682	0.798
problem_list:625.8	Other specified symptoms associated with female genital organs	0.027	0.872	0.220	0.724	0.573
abnormal_labs:250-PRO TIME		0.027	0.053	0.168	0.168	0.169
abnormal_labs:1409-TRANSFERRIN SAT		0.027			0.020	
abnormal_labs:2692-LYMPHOCYTE		0.025	0.070	0.039	0.095	0.115
abnormal_labs:6691-BRAIN NATRIURETIC PEPTIDE		-0.025	0.090			
meds_administered:7611	SULFAMETHOXAZOLE 800 MG-TRIMETHOPRIM 160 MG TABLET	0.024				
meds_reported:4464	DONEPEZIL 10 MG TABLET	0.023		0.039	0.061	
meds_reported:84721	APRISO ORAL	-0.022				
abnormal_labs:3363-WB K - ART (POCT)		-0.021				
meds_reported:6258	BACITRACIN 500 UNIT/GRAM TOPICAL OINTMENT	0.020		0.336	0.466	0.349
abnormal_labs:3364-HEMATOCRIT-ART(POCT)		-0.020				
problem_list:742.51	Diastematomyelia	-0.020				
problem_list:401.9	Unspecified essential hypertension	-0.020	-0.159		-0.020	-0.034
problem_list:584.9	Acute kidney failure, unspecified	0.018		0.090	0.033	0.078
problem_list:288.66	Bandemia	-0.018				
age_over89:Y		0.017	0.124			0.020
age_over89:N		-0.017	-0.124			-0.020
meds_administered:15419	ASPIRIN 81 MG CHEWABLE TABLET	-0.017	-0.150		-0.038	-0.046
abnormal_labs:2691-NEUTROPHIL		0.017	0.139		0.094	0.100
meds_administered:9554	OXYCODONE-ACETAMINOPHEN 5 MG-325 MG TABLET	-0.017	-0.012	-0.022	-0.045	-0.049
abnormal_labs:3279-WB GLUCOSE-VEN (GEM - MPOCT)		-0.017			-0.079	-0.106
admission_sources:Physician Referral		-0.015	-0.104		-0.054	-0.060
admission_sources:Clinic		-0.015	-0.104		-0.054	-0.060
problem_list:786.05	Shortness of breath	-0.015				
abnormal_labs:2655-BASOPHIL %		0.014	0.004			
problem_list:724.8	Other symptoms referable to back	0.014				
problem_list:V22.1	Supervision of other normal pregnancy	-0.014			-0.032	-0.047
problem_list:733.01	Senile osteoporosis	0.013				
problem_list:372.53	Conjunctival xerosis	0.013	0.459			
problem_list:278.00	Obesity, unspecified	-0.013	-0.074	-0.001	-0.121	-0.131
problem_list:428.22	Chronic systolic heart failure	0.013			0.014	0.093
problem_list:272.4	Other and unspecified hyperlipidemia	-0.012	-0.125		-0.041	-0.052
meds_reported:11398	CIPROFLOXACIN 0.3 % EYE DROPS	0.011				

Variable	Description	Model coefficients for each case definition				
		by ICD-9 code	by EIA (+)	by PCR (+)	EIA or PCR (+)	by any of these
problem_list:V22.0	Supervision of normal first pregnancy	-0.010		-0.005	-0.041	-0.055
abnormal_labs:3277-WB GLUCOSE-ART (POCT)		-0.010				
abnormal_labs:1074-CK-MB MASS		-0.010			-0.006	-0.033
problem_list:414.00	Coronary atherosclerosis of unspecified type of vessel, native or graft	-0.010	-0.098		-0.055	-0.074
problem_list:202.80	Other malignant lymphomas, unspecified site, extranodal and solid organ sites	0.009	0.643		0.129	0.164
abnormal_labs:1131-MAGNESIUM		0.009	0.028			
abnormal_labs:106-WB UREA NITROGEN-VEN		0.007				
meds_administered:1475	VENLAFAXINE ER 75 MG CAPSULE,EXTENDED RELEASE 24 HR	0.006	1.174			
problem_list:097.9	Syphilis, unspecified	0.006				
meds_administered:73300	PEG 3350-ELECTROLYTES-VITAMIN C 100 G-7.5 G-2.691 G-4.7 G POWDER PACK	0.004				0.003
abnormal_labs:3279-WB GLUCOSE-VEN (POCT)		-0.004		-0.018		
abnormal_labs:105-WB CO2 - VEN		0.004				
problem_list:782.3	Edema	0.003		0.081	0.009	
abnormal_labs:3317-O2 SATURATION - VEN		0.002	-0.038	0.077		
abnormal_labs:1138-POTASSIUM		0.002	0.015			
age		0.00019	0.0035	0.00054	0.0025	0.0021
meds_reported:49448	FLUCONAZOLE ORAL		7.315		1.720	1.518
problem_list:269.1	Deficiency of other vitamins		7.154		6.986	6.658
meds_reported:2499	CIPROFLOXACIN 750 MG TABLET		6.756		0.369	0.113
problem_list:458.8	Other specified hypotension		5.645		2.726	2.532
surgery_cases:NEPHRECTOMY/TRANSPLANT			5.207		4.465	4.206
meds_reported:28525	MORPHINE (PF) 10 MG/ML INJECTION		5.080		3.532	3.390
meds_reported:72925	IRON (FERROUS SULFATE) ORAL		4.908		0.275	
problem_list:997.61	Neuroma of amputation stump		4.888		5.283	5.041
meds_reported:63727	VELCADE IV		4.788		2.026	1.737
surgery_cases:ESOPHAGEAL DIVERTICULECTOMY OPEN			4.576		4.451	4.230
meds_administered:450	HALOPERIDOL 0.5 MG TAB		4.481			
problem_list:V70.8	Other specified general medical examinations		4.414	0.443	2.412	2.159
surgery_cases:VESSEL REPAIR/UPPER EXTREMITY			4.220		3.719	3.421
problem_list:786.00	Respiratory abnormality, unspecified		4.004		2.644	2.381
problem_list:151.0	Malignant neoplasm of cardia		3.683		1.105	0.903
meds_reported:20712	DILTIAZEM 90 MG TAB		3.590	0.413	1.320	1.130
meds_reported:391	AMOXICILLIN 500 MG CAP		3.445			
meds_reported:62668	TRAVATAN OPHT		3.428			
meds_reported:79819	BRIMONIDINE-TIMOLOL OPHT		3.385		5.725	6.046
surgery_cases:FEMORAL ARTERY ANEURYSM REPAIR			3.383		2.513	2.261
problem_list:958.3	Posttraumatic wound infection not elsewhere classified		3.150		0.789	0.595
abnormal_labs:1255-U-CREATININE (RANDOM)			2.988		3.188	2.929
meds_reported:31171	TADALAFIL 20 MG TABLET		2.953			
meds_reported:17771	LETROZOLE 2.5 MG TABLET		2.907			
abnormal_labs:20282-D-DIMER			2.864		0.469	0.242
surgery_cases:CRANIOTOMY AVM			2.858		1.148	0.874
meds_reported:12916	DIPHENHYDRAMINE 25 MG TABLET		2.771		0.179	0.025
problem_list:780.94	Early satiety		2.494		0.508	0.305
meds_reported:5575	METOCLOPRAMIDE 5 MG/5 ML ORAL SOLN		2.443		0.194	0.176
surgery_cases:THORACOTOMY/ADULT			2.430		0.392	0.243
problem_list:820.21	Closed fracture of intertrochanteric section of neck of femur		2.414			
meds_administered:5277	DOCUSATE SODIUM 283 MG ENEMA		2.382		0.850	0.706
meds_administered:2736	PHYTONADIONE 10 MG/ML INJECTION SOLUTION		2.377		0.197	0.109
meds_reported:29664	OMEPRAZOLE MAGNESIUM 20 MG TAB, DELAYED RELEASE		2.365		0.361	0.050

Variable	Description	Model coefficients for each case definition				
		by ICD-9 code	by EIA (+)	by PCR (+)	EIA or PCR (+)	by any of these
meds_reported:7905	RISPERIDONE 3 MG TABLET		2.310			
abnormal_labs:8420-ABS T CYTO/SUPP			2.281		2.057	1.917
meds_reported:1942	VENLAFAXINE 75 MG TABLET		2.262		0.205	0.116
abnormal_labs:8450-% T HELPER			2.223		1.981	1.825
meds_reported:62831	TRICOR ORAL		1.947		0.729	0.531
problem_list:117.3	Aspergillosis		1.742		1.482	1.269
problem_list:275.2	Disorders of magnesium metabolism		1.660		0.158	
problem_list:789.34	Abdominal or pelvic swelling, mass, or lump, left lower quadrant		-1.552			
surgery_cases:ANEURYSM /AORTO/THORACO ABDOMINAL REPAIR			1.527	1.186	1.624	1.452
meds_reported:12886	HYDROCODONE-ACETAMINOPHEN 7.5 MG-750 MG TABLET		1.493			
surgery_cases:NEPHRECTOMY PARTIAL ROBOTIC			1.432			
problem_list:053.10	Herpes zoster with unspecified nervous system complication		-1.405			
abnormal_labs:8416-ABS TOTAL T CELLS			-1.387		-0.044	-0.141
abnormal_labs:1164-PHENOBARBITAL			1.375			
meds_reported:54206	METOPROLOL TARTRATE ORAL		1.370			
problem_list:201.90	Hodgkin's disease, unspecified type, unspecified site, extranodal and solid organ sites		1.357			
problem_list:972.1	Poisoning by cardiotoxic glycosides and drugs of similar action		-1.335			
problem_list:440.9	Generalized and unspecified atherosclerosis		1.321			
meds_reported:7896	TRIAMTERENE-HYDROCHLOROTHIAZIDE 37.5 MG-25 MG CAP		1.278			
problem_list:154.0	Malignant neoplasm of rectosigmoid junction		1.255			
meds_reported:37109	MVI, ADULT NO.1 WITH VIT K 1 MG-5 MCG-10 MG-200MG-150MCG IV		-1.176			
problem_list:357.0	Acute infective polyneuritis		1.137			
problem_list:V46.11	Dependence on respirator, status		-1.096	0.661	0.569	0.516
problem_list:780.99	Other general symptoms		1.096		0.201	0.071
problem_list:V44.3	Colostomy status		1.096		0.664	0.495
problem_list:V44.0	Tracheostomy status		1.079		0.318	0.027
meds_reported:8523	GLIMEPIRIDE 1 MG TABLET		1.056			
meds_reported:12784	NYSTATIN 100,000 UNIT/G TOPICAL CREAM		1.047			
abnormal_labs:2553-INR			1.044			
problem_list:322.9	Meningitis, unspecified		1.043			
abnormal_labs:8423-HELPER/SUPPRESSOR			-1.036		-1.325	-0.977
abnormal_labs:8458-ABS T HELPER			-1.031		-0.555	-0.492
admission_sources:Transfer from Another Health Care Facility			0.998		0.379	0.232
surgery_cases:EXPLORATORY LAP/GS			0.997		0.658	0.488
problem_list:747.60	Anomaly of the peripheral vascular system, unspecified site		0.955			
meds_administered:400588	ENALAPRILAT IVPB		0.955			
meds_reported:11170	VALPROIC ACID (AS SODIUM SALT) 250 MG/5 ML SYRUP		0.954			0.442
meds_reported:80981	CALCIUM CARBONATE-VITAMIN D3 200 MG (500 MG)-400 UNIT TABLET		-0.946			
abnormal_labs:4271-HEPATITIS BS AG			0.946			
meds_administered:287	CYCLOBENZAPRINE 10 MG TABLET		0.927			
meds_reported:75453	SITAGLIPTIN-METFORMIN 50 MG-500 MG TAB		0.906			
surgery_cases:COLONOSCOPY			0.904	0.180	1.251	1.086
problem_list:792.1	Nonspecific abnormal findings in stool contents		0.868		0.167	0.061
surgery_cases:VULVECTOMY/PARTIAL			0.859	0.204	0.981	0.764
surgery_cases:LARYNGOSCOPY W/BIOPSY			0.834			
meds_reported:46190	COUMADIN ORAL		0.834			

Variable	Description	Model coefficients for each case definition				
		by ICD-9 code	by EIA (+)	by PCR (+)	EIA or PCR (+)	by any of these
surgery_cases:LARYNGOSCOPY/MICRO			0.827		0.165	0.025
meds_administered:29686	POTASSIUM CHLORIDE ER 10 MEQ TAB, PARTICLES/CRYSTALS		0.802			
abnormal_labs:817-IG A QUANT			0.785			
problem_list:781.3	Lack of coordination		0.766			
abnormal_labs:2813-CASTS			0.761		0.333	0.283
problem_list:275.09	Other disorders of iron metabolism		0.759			
problem_list:V46.2	Other dependence on machines, supplemental oxygen		0.722	0.152	0.923	0.761
meds_administered:400187	MIDAZOLAM INFUSION ADULT		0.719			
meds_administered:3596	SULFAMETHOXAZOLE 400 MG-TRIMETHOPRIM 80 MG TABLET		0.683			
surgery_cases:SIGMOID RESECTION/GS			0.673	0.326	0.861	0.686
problem_list:228.00	Hemangioma of unspecified site		0.667			
meds_administered:39154	PREGABALIN 75 MG CAP		0.662			
surgery_cases:UPPER ENDOSCOPY/DOUBLE BALLOON ENTEROSCOPY			0.657	1.574	1.144	0.858
meds_administered:13402	URSODIOL 300 MG CAP		0.652	0.166	0.202	0.219
problem_list:252.01	Primary hyperparathyroidism		0.620		0.105	
abnormal_labs:5067-VITAMIN B12, SERUM			0.609			
problem_list:588.89	Other specified disorders resulting from impaired renal function		-0.609			
problem_list:511.81	Malignant pleural effusion		0.580		1.037	0.877
surgery_cases:HYPERTHERMIC PERITONEAL PERFUSION CHEMOTHERAPY			0.547	0.640	0.868	0.724
problem_list:358.00	Myasthenia gravis without (acute) exacerbation		0.540			
problem_list:209.60	Benign carcinoid tumor of unknown primary site		0.533			
problem_list:150.9	Malignant neoplasm of esophagus, unspecified site		0.532		0.029	
surgery_cases:LEG AMPUTATION/BKA			-0.503		-0.142	-0.091
problem_list:305.00	Alcohol abuse, unspecified		0.501			
meds_administered:36397	CALCIUM ACETATE 667 MG CAP		-0.478			
abnormal_labs:1254-U-UREA (RANDOM)			-0.475			
meds_administered:4067	WARFARIN 7.5 MG TABLET		0.459			
surgery_cases:HIP FRACTURE/ORIF			0.457			
problem_list:182.0	Malignant neoplasm of corpus uteri, except isthmus		0.454		0.188	0.105
problem_list:794.31	Nonspecific abnormal electrocardiogram [ECG] [EKG]		0.453			
meds_reported:42786	BACID ORAL		0.449	1.859	2.455	2.216
abnormal_labs:1730-PREALBUMIN			0.432	0.221	0.431	0.415
problem_list:530.10	Esophagitis, unspecified		0.427			
problem_list:805.8	Closed fracture of unspecified vertebral column without mention of spinal cord injury		0.424			
problem_list:564.81	Neurogenic bowel		0.403		0.063	
surgery_cases:LIVER RESECTION PARTIAL/LAPA/RMTI			0.398			
meds_reported:36651	GABAPENTIN 100 MG TAB		0.388			
meds_reported:56741	OXYCODONE ORAL		0.380			
meds_reported:5544	CLONAZEPAM 1 MG TABLET		0.374			
abnormal_labs:1135-PHOSPHORUS			0.374		0.143	0.115
meds_administered:7474	DIVALPROEX 500 MG TAB, DELAYED RELEASE		0.361			
problem_list:521.00	Dental caries, unspecified		0.340			
meds_reported:10091	CITALOPRAM 20 MG TABLET		0.336			
problem_list:272.2	Mixed hyperlipidemia		0.322		0.078	0.176
surgery_cases:GASTRECTOMY/SUBTOTAL			0.321			
problem_list:515	Postinflammatory pulmonary fibrosis		0.281		0.065	
abnormal_labs:8069-HAPTOGLOBIN			-0.276			-0.046
abnormal_labs:2872-WBC			0.274			
meds_administered:16711	ZIPRASIDONE 40 MG CAPSULE		0.267		0.068	
surgery_cases:COLECTOMY/HEMI/RIGHT/LAPAROSCOPY			0.263			

Variable	Description	Model coefficients for each case definition				
		by ICD-9 code	by EIA (+)	by PCR (+)	EIA or PCR (+)	by any of these
meds_administered:6580	HALOPERIDOL 1 MG TABLET		-0.260			
abnormal_labs:1274-FERRITIN			0.253			0.023
abnormal_labs:7903-TESTOSTERONE			-0.250			
	OMEGA-3 ACID ETHYL ESTERS 1					
meds_administered:39228	GRAM CAPSULE		-0.245			
abnormal_labs:1301-OSMOLALITY SERUM			0.244		0.058	
problem_list:799.89	Other ill-defined conditions		0.243			
surgery_cases:SMALL BOWEL RESECTION/GS			0.240			
surgery_cases:NASAL RECONSTRUCTION/PLAS			-0.237			
meds_administered:39153	PREGABALIN 50 MG CAPSULE		0.236			
problem_list:611.71	Mastodynia		0.230			
	Diabetes with renal manifestations, type II or unspecified type, not stated as uncontrolled					
problem_list:250.40			0.223	0.116	0.364	0.272
	NORETHINDRONE (CONTRACEPTIVE) 0.35 MG TABLET		-0.221			
meds_reported:18197			-0.221			
abnormal_labs:3315-HCO3 - VEN			0.213			
problem_list:790.92	Abnormal coagulation profile		-0.210			
abnormal_labs:306-WB UREA NITROGEN-ART			0.209			
meds_reported:16711	ZIPRASIDONE 40 MG CAPSULE		0.205		1.172	0.899
problem_list:250.4			-0.198		-0.228	-0.031
problem_list:808.8	Closed unspecified fracture of pelvis		-0.195			
	DARBEPOETIN ALFA 150 MCG/0.3 ML IN POLYSORBATE SYRINGE		-0.188			
meds_reported:73061			-0.188			
problem_list:799.02	Hypoxemia		0.186			
abnormal_labs:4369-WB CA++ - VEN(POCT)			0.185		0.101	0.104
surgery_cases:CRANIOTOMY/SUBDURAL HEMATOMA			0.185			
problem_list:518.81	Acute respiratory failure		-0.181	0.177	0.042	
problem_list:621.9	Unspecified disorder of uterus		-0.178			
problem_list:282.69	Other sickle-cell disease with crisis		-0.175			
abnormal_labs:8800-PROTEIN TOTAL			-0.172			-0.060
	FENTANYL 12 MCG/HR TRANSDERM PATCH		-0.164			
meds_administered:38613			-0.164			
abnormal_labs:2816-BACTERIA			0.163		0.048	0.041
abnormal_labs:798-PTH, INTACT			0.162			
problem_list:183.0	Malignant neoplasm of ovary		0.158		0.117	0.023
abnormal_labs:1121-CREATININE			0.153	0.018	0.072	0.066
abnormal_labs:2617-SEGMENTED CELLS			0.146	0.149	0.227	0.156
meds_administered:17971	DILTIAZEM 30 MG TAB		0.145			
problem_list:276.51	Dehydration		-0.145			
abnormal_labs:824-BASIC T CELL			-0.143			
abnormal_labs:1130-LD(LDH)			0.140		0.042	0.053
	PHENOBARBITAL 20 MG/5 ML ORAL ELIXIR		-0.138			
meds_reported:3051			-0.138			
abnormal_labs:3281-WB LACTATE-ART (POCT)			0.137	0.032	0.123	0.085
	Obstructive sleep apnea (adult)(pediatric)		0.136			
problem_list:327.23			0.136			
admission_sources:Transfer from MS Acute Unit to Hospice			0.133			
meds_administered:19195	TACROLIMUS 1 MG CAPSULE		0.127	0.093	0.264	0.230
	Malignant neoplasm of stomach, unspecified site					
problem_list:151.9			0.124		0.084	0.014
abnormal_labs:1137-GAMMA G T			0.124	0.013	0.116	0.103
problem_list:276.1	Hyposmolality and/or hyponatremia		-0.122			
abnormal_labs:2838-LEUKOCYTE ESTERASE			0.120		0.035	0.071
	FLUTICASONE-SALMETEROL 500 MCG-50 MCG/DOSE DISK DEVICE FOR INHALATION		0.119			
meds_administered:13644			0.119			
problem_list:585.6	End stage renal disease		-0.119	0.234	0.144	0.158
problem_list:744.4			-0.117			
abnormal_labs:309-WB IONIZED CA - ART			0.116		0.047	0.028
surgery_cases:LIVER TRANSPLANT/ADULT			0.113	0.347	0.519	0.394
abnormal_labs:4374-BASE EX - VEN(POCT)			0.111			
abnormal_labs:4362-WB NA - VEN (POCT)			0.108			
problem_list:571.8	Other chronic nonalcoholic liver disease		0.107			

Variable	Description	Model coefficients for each case definition				
		by ICD-9 code	by EIA (+)	by PCR (+)	EIA or PCR (+)	by any of these
surgery_cases:HYSTERECTOMY/SUPRACERVICAL			0.104			
meds_reported:847	MULTIVITAMIN ORAL LIQUID		0.103			
problem_list:415.19	Other pulmonary embolism and infarction		0.103			
meds_reported:8439	PHENYTOIN 125 MG/5 ML ORAL SUSPENSION		-0.101			
problem_list:733			0.099			
meds_reported:24201	VORICONAZOLE 200 MG TABLET		-0.097			
problem_list:695.89	Other specified erythematous conditions		0.096			
problem_list:434.91	Cerebral artery occlusion, unspecified with cerebral infarction		-0.095	0.020		
meds_administered:4401	LORAZEPAM 2 MG/ML INJECTION		-0.094	0.042	0.008	
problem_list:564.00	Constipation, unspecified		-0.093		-0.029	-0.035
abnormal_labs:1134-ALK.PHOSPHATASE			0.093	0.012	0.064	0.053
problem_list:530.81	Esophageal reflux		-0.092			
meds_administered:76032	ZINC OXIDE-ALOE VERA-VITAMIN E ACETATE 11.3% TOPICAL CREAM		-0.090			
abnormal_labs:5520-NUCLEATE RBC%			0.090		0.181	0.058
problem_list:V42.0	Kidney replaced by transplant		-0.085		-0.062	
abnormal_labs:357-PROTHROMBIN TIME - SL			0.085		0.178	0.206
problem_list:710.0	Systemic lupus erythematosus		-0.083			
abnormal_labs:3313-pO2 - VEN			-0.080	0.053		
abnormal_labs:818-IG G QUANT			-0.080			
problem_list:284.1			-0.079			
abnormal_labs:3311-pH - VEN			-0.078			
problem_list:305.1	Tobacco use disorder		-0.076			
meds_administered:21305	FAMOTIDINE (PF) 20 MG/50 ML IN 0.9 % NACL (ISO) INTRAVENOUS PIGGYBACK		-0.076			
problem_list:789.01	Abdominal pain, right upper quadrant		0.076			
abnormal_labs:20915-ABS NEUTROPHIL COUNT			-0.076		-0.016	
surgery_cases:LIVER SEGMENT LOBECT/RMTI			-0.070			
abnormal_labs:301-WB GLUCOSE - ART			0.070			
problem_list:562.11	Diverticulitis of colon (without mention of hemorrhage)		0.063			
abnormal_labs:1194-DIGOXIN			-0.063		-0.012	
problem_list:285.9	Anemia, unspecified		-0.060			
meds_administered:1451	ACETAMINOPHEN 325 MG TABLET		-0.058			
problem_list:682.7	Cellulitis and abscess of foot, except toes		-0.056			
problem_list:453.40	Acute venous embolism and thrombosis of unspecified deep vessels of lower extremity		0.055			
meds_reported:59417	RENAGEL ORAL		-0.054			
problem_list:250.00	Diabetes mellitus without mention of complication, type II or unspecified type, not stated as uncontrolled		-0.053			-0.004
meds_administered:19136	DEXTROSE 5 % AND 0.45 % SODIUM CHLORIDE IV		-0.049			
problem_list:389.9	Unspecified hearing loss		-0.047			
problem_list:496	Chronic airway obstruction, not elsewhere classified		0.047			
problem_list:268.9	Unspecified vitamin D deficiency		-0.046			-0.009
meds_administered:77	MULTIVITAMIN TABLET		-0.046		-0.068	-0.082
meds_reported:35995	ALBUTEROL SULFATE 2.5 MG/0.5 ML SOLUTION FOR NEBULIZATION		0.046			
abnormal_labs:104-WB CHLORIDE - VEN			0.044			
meds_reported:51604	INSULIN GLARGINE SUBQ		-0.044			
abnormal_labs:2528-D-DIMER			-0.044			
problem_list:070.70	Unspecified viral hepatitis C without hepatic coma		-0.043	0.126		0.005
abnormal_labs:304-WB CHLORIDE - ART			0.043			0.212
abnormal_labs:2606-MEAN CORP. HGB			-0.042		-0.015	-0.020
meds_administered:1131	HYDROXYUREA 500 MG CAPSULE		-0.041			

Variable	Description	Model coefficients for each case definition				
		by ICD-9 code	by EIA (+)	by PCR (+)	EIA or PCR (+)	by any of these
problem_list:239.0	Neoplasm of unspecified nature of digestive system		0.041	0.078	0.396	0.262
abnormal_labs:2807-BLOOD			0.040		0.003	
problem_list:300.00	Anxiety state, unspecified		-0.039			
abnormal_labs:4373-pO2 - VEN (POCT)			0.037			
problem_list:424.1	Aortic valve disorders		-0.036			
problem_list:011.90	Pulmonary tuberculosis, unspecified, unspecified		0.036		0.125	
problem_list:784.0	Headache		-0.034			
problem_list:428.0	Congestive heart failure, unspecified		-0.032	0.079	0.005	
abnormal_labs:2651-NEUTROPHIL %			0.032		0.000	0.008
problem_list:724.5	Backache, unspecified		-0.031			
problem_list:733.00	Osteoporosis, unspecified		-0.029			-0.003
meds_administered:18722	SODIUM CHLORIDE 0.9 % FOR NEBULIZATION		0.029			
problem_list:791.0	Proteinuria		-0.028			
abnormal_labs:251-APTT			0.026	0.049	0.039	0.002
meds_administered:400001	ZZ IMS TEMPLATE		-0.025			
problem_list:585.4	Chronic kidney disease, Stage IV (severe)		-0.020			
abnormal_labs:3376-TOT CO2-ART (POCT)			0.017			
problem_list:493.90	Asthma, unspecified type, unspecified		-0.016		-0.014	
meds_reported:13658	CALCIUM CARBONATE 400 MG CHEWABLE TAB		-0.016			
meds_administered:23929	ENOXAPARIN 30 MG/0.3 ML SUB-Q SYRINGE		0.016			
abnormal_labs:2874-LYMPH			0.015			
abnormal_labs:3316-TOTAL CO2 - VEN			-0.015			
abnormal_labs:3301-pH - ART			0.015			
problem_list:V53.8	Fitting and adjustment of wheelchair		-0.014			
problem_list:416.8	Other chronic pulmonary heart diseases		0.014		0.009	
problem_list:V59.6	Liver donors		-0.014			
problem_list:054.10	Genital herpes, unspecified		0.014			
abnormal_labs:4279-HEPATITIS A VIRUS TOTAL			-0.013			
problem_list:311	Depressive disorder, not elsewhere classified		-0.012			
meds_reported:15914	FOLIC ACID 1 MG TABLET		-0.011			
admission_sources:Information Not Available			0.010		0.006	
abnormal_labs:2815-CLUMPS			0.010			
meds_administered:4000	MYCOPHENOLATE MOFETIL 250 MG CAPSULE		0.009			
meds_administered:7372	ALBUMIN, HUMAN 5 % IV		0.007	0.141	0.222	0.186
gender:Male			0.005			
gender:Female			-0.005			
problem_list:780.52	Insomnia, unspecified		-0.004		-0.010	
abnormal_labs:1144-SODIUM			0.004	0.025	0.022	
problem_list:280.9	Iron deficiency anemia, unspecified		0.002			
meds_reported:100591	LUTEIN 20 MG TABLET			6.629	7.157	6.914
meds_reported:600609	GCO			6.553	7.122	6.831
problem_list:197.1	Secondary malignant neoplasm of mediastinum			6.085	3.036	2.954
meds_reported:2536	ACETAMINOPHEN 160 MG/5 ML ORAL LIQUID			5.597	5.111	5.243
meds_reported:400919	ACETAMINOPHEN 650 MG IN STERILE DILUENT 65 ML IVPB			5.580	6.407	6.170
problem_list:077.1	Epidemic keratoconjunctivitis			5.547	6.267	6.103
meds_reported:43905	BUMEX ORAL			5.447	5.858	5.751
meds_reported:400941	CEFAZOLIN IN 150 ML D5W IVPB			5.099	5.731	5.585
meds_reported:1997	INDINAVIR 400 MG CAP			5.050	3.261	3.229
meds_reported:3925	DANAZOL 50 MG CAP			4.996	5.153	4.786
problem_list:256.39	Other ovarian failure			4.993	4.496	4.260
meds_reported:10793	LODOXAMIDE TROMETHAMINE 0.1 % EYE DROPS			4.987	5.432	5.184
meds_reported:9013	FERROUS GLUCONATE 300 MG/5 ML			4.956	5.011	4.365

Variable	Description	Model coefficients for each case definition				
		by ICD-9 code	by EIA (+)	by PCR (+)	EIA or PCR (+)	by any of these
	(33.7 MG IRON) ELIXIR					
problem_list:403.00	Hypertensive chronic kidney disease, malignant, with chronic kidney disease stage I through stage IV, or unspecified			4.668	4.458	4.236
surgery_cases:GASTRIC BYPASS				4.579	4.375	4.149
problem_list:156.9	Malignant neoplasm of biliary tract, part unspecified site			4.524	4.736	4.495
meds_administered:8994	AMOXICILLIN 400 MG-POTASSIUM CLAVULANATE 57 MG/5 ML ORAL SUSPENSION			4.498	4.404	4.122
problem_list:512.84	Other air leak			4.465	3.395	3.265
meds_reported:400699	TIGECYCLINE 50 MG/50 ML NS IVPB			4.355	4.634	4.307
meds_reported:96686	ATELVIA ORAL			4.123	4.515	4.353
meds_reported:31250	MENTHOL 1.4 % ADHESIVE PATCH			4.042	4.244	4.224
meds_reported:18521	AMPHOTERICIN B LIPOSOME 50 MG INTRAVENOUS SUSPENSION			3.951	2.876	2.899
meds_reported:83394	RENO CAPS 1 MG CAPSULE			3.907	4.199	4.031
meds_reported:4860	PE-SHARK LIVER OIL-COCOA BUTTR 0.25 %-3 % RECTAL SUPPOSITORY			3.716	3.994	3.903
problem_list:286.7	Acquired coagulation factor deficiency			3.711	4.303	4.228
problem_list:864.05	Injury to liver without mention of open wound into cavity laceration, unspecified			3.619	4.047	3.763
meds_reported:92784	COLLAGENASE CLOSTRIDIUM HIST. TOP			3.461	3.584	3.383
meds_reported:6355	PARICALCITOL 5 MCG/ML IV SOLUTION			3.457	3.670	3.632
meds_reported:2644	OXYCODONE-ACETAMINOPHEN 5 MG-500 MG TAB			3.444	3.816	3.435
surgery_cases:VAD PROCEDURE				3.416	1.921	1.813
meds_reported:5737	GALANTAMINE 4 MG TAB			3.320	3.982	3.836
problem_list:595.2	Other chronic cystitis			3.285	3.388	3.164
problem_list:746.5	Congenital mitral stenosis			3.265	3.539	2.947
meds_reported:79686	PROTEIN SUPPLEMENT ORAL LIQUID			3.229	3.494	3.481
meds_reported:60225	SENNA-S ORAL			3.195	3.418	3.395
meds_administered:9956	POTASSIUM IODIDE 1 GRAM/ML ORAL SOLN			3.130	3.366	3.106
surgery_cases:HEART TRANSPLANT/ADT				3.130	2.168	2.052
surgery_cases:OMENECTOMY				3.120	3.483	3.328
problem_list:357.4	Polynuropathy in other diseases classified elsewhere			3.102	2.417	2.312
problem_list:327.01	Insomnia due to medical condition classified elsewhere			3.077		
meds_reported:14510	MISOPROSTOL 100 MCG TABLET			3.068	3.099	2.943
meds_reported:14626	CEFIXIME 400 MG TABLET			3.014	3.239	2.883
problem_list:275.5	Hungry bone syndrome			3.000	3.401	3.396
meds_administered:31009	ARTIFICIAL SALIVA (YERBA SANTA & LYLES) SPRAY			2.980	2.800	2.710
meds_reported:12359	OSELTAMIVIR 75 MG CAPSULE			2.888	3.198	3.072
meds_administered:8923	CEFOTAXIME 1 GRAM SOLUTION FOR INJECTION			2.831	2.850	2.525
meds_reported:76236	QUETIAPINE ER 200 MG TABLET,EXTENDED RELEASE 24 HR			2.748	3.029	2.864
problem_list:569.61	Infection of colostomy or enterostomy			2.704	2.944	2.861
problem_list:E930.8	Other specified antibiotics causing adverse effects in therapeutic use			2.684	2.884	2.779
meds_reported:98850	ABIRATERONE 250 MG TABLET			2.633	2.655	2.412
problem_list:482.84	Pneumonia due to Legionnaires' disease			2.595	3.163	2.757
meds_reported:100352	MORPHINE (PF) 2 MG/2 ML (1 MG/ML) IN 0.9% SODIUM CHLORIDE INJ SYRINGE			2.566	2.502	2.572
meds_administered:496	AMINOCAPROIC ACID 500 MG TAB			2.564	2.887	2.553
meds_reported:15848	SIMETHICONE 125 MG CHEWABLE			2.559	2.447	2.263

Variable	Description	Model coefficients for each case definition				
		by ICD-9 code	by EIA (+)	by PCR (+)	EIA or PCR (+)	by any of these
	TAB					
problem_list:730.26	Unspecified osteomyelitis, lower leg			2.552	2.126	2.134
meds_administered:400035	FENTANYL INFUSION PEDS			2.543	2.901	2.707
problem_list:V66.2	Convalescence following chemotherapy			2.536	2.725	2.529
meds_administered:7261	VITAMIN E 50 UNIT/ML ORAL DROPS			2.526	2.825	2.553
meds_reported:26129	CELECOXIB 400 MG CAP			2.517	2.785	2.662
meds_reported:43904	BUMETANIDE ORAL			2.488	2.676	2.633
problem_list:530.13	Eosinophilic esophagitis			2.429	3.011	2.707
problem_list:410.31	Acute myocardial infarction of inferoposterior wall, initial episode of care			2.373	2.755	2.524
problem_list:195.2	Malignant neoplasm of abdomen			2.335	2.213	2.028
meds_administered:9111	LOPERAMIDE 1 MG/5 ML ORAL LIQUID			2.335	2.665	2.519
meds_reported:400494	FUROSEMIDE IV BURITROL SYRINGE 10 MG/ML STERILE DIL			2.314	2.368	2.188
meds_reported:52861	LEVORA-28 ORAL			2.304	2.669	2.509
meds_reported:37202	MORPHINE 1 MG/ML IN 0.9 % SODIUM CHLORIDE INJECTABLE PUMP RESERVOIR			2.300	2.517	2.524
meds_reported:52859	LEVOPHED IV			2.288	2.409	2.500
meds_reported:84060	ESTROVEN ENERGY ORAL			2.278	2.503	2.524
meds_reported:45575	CLOXACILLIN ORAL			2.255	2.388	2.496
meds_reported:10271	CYCLOPHOSPHAMIDE 25 MG TAB			2.213	2.188	1.986
meds_administered:72791	DARBEOETIN ALFA 60 MCG/0.3 ML IN POLYSORBATE SYRINGE			2.154	1.646	1.423
meds_reported:5676	SIMETHICONE 125 MG CAP			2.075	2.527	2.216
problem_list:628.8	Infertility, female, of other specified origin			2.003	2.747	2.547
problem_list:922.2	Contusion of abdominal wall			1.952	2.576	2.424
meds_administered:9407	HYDROXYZINE HCL 10 MG/5 ML SYRUP			1.946	1.585	1.392
meds_reported:20558	CLINDAMYCIN 600 MG/50 ML IN DEXTROSE 5% INTRAVENOUS PIGGYBACK			1.846	1.938	1.831
meds_reported:170	TOLTERODINE ER 2 MG 24 HR CAP			1.789	2.048	1.844
meds_reported:8083	AMOXICILLIN-POTASSIUM CLAVULANATE 200 MG-28.5 MG/5 ML ORAL SUSP			1.786	2.124	1.838
meds_reported:19994	RANITIDINE 15 MG/ML SYRUP			1.767	1.847	1.701
abnormal_labs:1851-PHENYTOIN FREE				1.739	0.637	1.088
problem_list:250.13	Diabetes with ketoacidosis, type I [juvenile type], uncontrolled			1.681	2.092	1.941
problem_list:952.05	C5-C7 level with unspecified spinal cord injury			1.670	1.914	1.793
surgery_cases:EXPLORATORY LAP/RMTI				1.639	0.248	0.122
meds_reported:54501	MIRTAZAPINE ORAL			1.605	1.665	1.446
problem_list:835.00	Closed dislocation of hip, unspecified site			1.603	1.507	1.328
meds_reported:200	KETOROLAC 15 MG/ML INJECTION SOLUTION			1.598	1.744	1.452
problem_list:288.8	Other specified disease of white blood cells			1.572	1.350	1.378
problem_list:289.9	Unspecified diseases of blood and blood-forming organs			1.566	0.946	0.683
meds_reported:45639	CODEINE SULFATE ORAL			1.484	1.481	1.179
problem_list:530.20	Ulcer of esophagus without bleeding			1.471	0.857	0.563
meds_reported:12715	BUMETANIDE 0.5 MG TABLET			1.468	1.618	1.185
meds_reported:3474	NYSTATIN 100,000 UNIT/G OINTMENT			1.458	1.649	1.525
problem_list:424.2	Tricuspid valve disorders, specified as nonrheumatic			1.450	1.621	1.364
problem_list:V42.89	Other specified organ or tissue replaced by transplant			1.444	1.703	1.464

Variable	Description	Model coefficients for each case definition				
		by ICD-9 code	by EIA (+)	by PCR (+)	EIA or PCR (+)	by any of these
meds_administered:400741	FOSAPREPITANT COMBO 2			1.437	1.967	2.010
meds_administered:24763	CALCIUM CHLORIDE 100 MG/ML (10 %) IV SYRINGE			1.409	1.655	1.387
meds_reported:98848	ROFLUMILAST 500 MCG TABLET			1.394	1.770	1.581
problem_list:599.1	Urethral fistula			1.379	0.994	0.984
meds_administered:400403	RASBURICASE INFUSION			1.374	1.315	1.227
problem_list:198.2	Secondary malignant neoplasm of skin			1.372	0.946	0.872
meds_reported:92591	VANCOMYCIN 1.25 GRAM/150 ML IN 0.9 % SODIUM CHLORIDE INTRAVENOUS			1.360	1.680	1.493
problem_list:607.9	Unspecified disorder of penis			1.357	0.961	0.879
problem_list:444.22	Arterial embolism and thrombosis of lower extremity			1.338	1.071	0.939
meds_administered:401026	LACOSAMIDE IVPB			1.296	1.626	1.509
problem_list:519.02	Mechanical complication of tracheostomy			1.292	1.339	1.318
meds_administered:10672	PROPRANOLOL 20 MG/5 ML ORAL SOLN			1.285	1.293	0.952
meds_reported:1796	CEFUROXIME AXETIL 250 MG TABLET			1.283	1.314	0.978
meds_administered:3727	DRONABINOL 5 MG CAP			1.229	1.268	1.176
surgery_cases:LUNG LOBECTOMY				1.207	1.776	1.565
meds_reported:3392	AMITRIPTYLINE 75 MG TABLET			1.182	1.818	1.606
problem_list:097.1	Latent syphilis, unspecified			1.176	0.805	0.608
meds_reported:4432	FLUCONAZOLE 200 MG TABLET			1.172	0.914	0.817
meds_reported:42645	AZOPT OPHT			1.172	1.011	0.845
problem_list:730.10	Chronic osteomyelitis, site unspecified			1.165	1.063	1.176
meds_administered:92493	FLUCONAZOLE IN SODIUM CHLORIDE (ISO-OSM) 100 MG/50 ML IV PIGGY BACK			1.151	1.323	1.113
meds_reported:20494	METOPROLOL 5 MG/5 ML IV			1.096	1.033	1.011
meds_reported:2804	PROPYLTHIOURACIL 50 MG TAB			1.091	1.068	0.997
problem_list:615.9	Unspecified inflammatory disease of uterus			1.089	1.423	1.193
meds_administered:400120	CISATRACURIUM INFUSION ADULT			1.080	1.426	1.355
meds_administered:803	DIPHENHYDRAMINE 12.5 MG/5 ML ORAL LIQUID			1.073	1.225	1.101
problem_list:382.3	Unspecified chronic suppurative otitis media			1.072	1.150	1.108
meds_reported:15954	EPOETIN ALFA 3,000 UNIT/ML INJECTION SOLUTION			1.056	1.482	1.236
meds_administered:400174	LABETALOL INFUSION ADULT			1.050	1.235	1.072
meds_reported:86560	VANCOMYCIN 750 MG IV SOLUTION			1.038	1.332	1.169
problem_list:707.07	Pressure ulcer, heel			1.035	1.062	0.855
meds_reported:30119	WHITE PETROLATUM 41 % TOPICAL OINTMENT			1.033	1.267	0.824
problem_list:571.1	Acute alcoholic hepatitis			1.027	1.118	0.969
meds_reported:519	GANCICLOVIR 500 MG IV SOLUTION			0.994	0.966	0.950
meds_reported:44709	CELLCEPT INTRAVENOUS IV			0.993	0.968	0.947
meds_reported:9998	METHENAMINE HIPPURATE 1 GRAM TABLET			0.987	1.233	1.118
meds_reported:58663	PROGRAF IV			0.983	0.959	0.925
meds_reported:400155	GANCICLOVIR IVPB			0.972	0.944	0.905
meds_administered:400192	MYCOPHENOLATE IVPB 1 G IN 170 ML D5W			0.970	1.052	0.905
meds_administered:20175	SODIUM CHLORIDE 3 % INTRAVENOUS INJECTION SOLUTION			0.954	0.948	0.871
problem_list:481	Pneumococcal pneumonia [Streptococcus pneumoniae pneumonia]			0.946	1.259	1.178
problem_list:255.8	Other specified disorders of adrenal glands			0.939	1.200	0.919
meds_administered:14840	SULFAMETHOXAZOLE- TRIMETHOPRIM 200 MG-40 MG/5 ML			0.936	1.058	1.003

Variable	Description	Model coefficients for each case definition				
		by ICD-9 code	by EIA (+)	by PCR (+)	EIA or PCR (+)	by any of these
	ORAL SUSP					
meds_reported:11695	PROCHLORPERAZINE 25 MG RECTAL SUPPOSITORY			0.916	1.006	0.777
meds_reported:7331	PROCHLORPERAZINE MALEATE 10 MG TABLET			0.911	0.917	1.251
meds_administered:2499	CIPROFLOXACIN 750 MG TABLET			0.865	1.100	0.878
meds_reported:4774	DEXTROAMPHETAMINE-AMPHETAMINE 10 MG TABLET			0.863	1.092	0.860
abnormal_labs:4622-CMV IGG	AB DETECTION			0.859	0.489	0.299
meds_administered:2226	CLONIDINE 0.1 MG/24 HR WEEKLY TRANSDERMAL PATCH			0.853	0.942	0.906
meds_administered:17464	BROMOCRIPTINE 5 MG CAP			0.850	1.004	0.780
problem_list:186.9	Malignant neoplasm of other and unspecified testis			0.836	0.888	0.691
meds_reported:20550	HALOPERIDOL 2 MG/ML ORAL CONCENTRATE			0.833	1.064	0.876
problem_list:145.0	Malignant neoplasm of cheek mucosa			0.830	1.300	1.058
meds_administered:700037	ALBUMIN, HUMAN 5 % IV (APHERESIS) (7372)			0.825	1.225	1.147
problem_list:536.42	Mechanical complication of gastrostomy			0.823	1.350	0.989
meds_reported:63204	TYLENOL-CODEINE			0.819	1.344	1.210
meds_administered:83234	SALIVA STIMULANT AGENTS COMBINATION NO.3 MUCOSAL SPRAY			0.811	1.227	1.000
problem_list:571.3	Alcoholic liver damage, unspecified			0.797	0.498	0.349
meds_administered:13705	HYDROCORTISONE 100 MG/60 ML ENEMA			0.795	0.909	0.738
problem_list:952.10	T1-T6 level with unspecified spinal cord injury			0.778	0.421	0.320
meds_reported:54911	MULTIVITAMINS W/C ORAL			0.772	0.046	
problem_list:427.41	Ventricular fibrillation			0.768	0.829	0.703
problem_list:369.60	Profound impairment, one eye, impairment level not further specified			0.762	0.688	0.517
meds_reported:16963	LOTEPREDNOL ETABONATE 0.5 % EYE DROPS,SUSPENSION			0.762	0.816	0.697
problem_list:279.00	Hypogammaglobulinemia, unspecified			0.748	0.739	0.616
problem_list:380.14	Malignant otitis externa			0.745	0.868	0.473
surgery_cases:PULMONARY	THROMBOARTERECTOMY			0.743	0.657	0.451
meds_reported:72791	DARBEOETIN ALFA 60 MCG/0.3 ML IN POLYSORBATE SYRINGE			0.732	0.837	0.726
problem_list:728.2	Muscular wasting and disuse atrophy, not elsewhere classified			0.718	0.267	0.064
meds_administered:400554	METHYLENE BLUE IV INFUSION			0.709	1.483	1.386
problem_list:726.4	Enthesopathy of wrist and carpus			0.707	0.384	0.305
problem_list:E849.0	Home accidents			0.701	1.009	0.833
meds_administered:2804	PROPYLTHIOURACIL 50 MG TAB			0.690	0.636	0.558
meds_administered:6521	GABAPENTIN 250 MG/5 ML ORAL SOLUTION			0.683	0.653	0.408
abnormal_labs:307-WB CREATININE - ART				0.675	0.204	0.086
problem_list:V10.43	Personal history of malignant neoplasm of ovary			0.675	1.104	0.871
problem_list:790.1	Elevated sedimentation rate			0.672	0.573	0.327
problem_list:V58.2	Blood transfusion, without reported diagnosis			0.666	0.650	0.519
meds_administered:400408	SODIUM CHLORIDE 2% WITHOUT ADDITIVES			0.662	0.748	0.659
meds_reported:55664	NIFEDIPINE ORAL			0.658	0.814	0.687
problem_list:V45.09	Other specified cardiac device in situ			0.648	1.759	1.721
meds_administered:4397	BRINZOLAMIDE 1 % EYE DROPS, SUSP			0.648	0.828	0.691
meds_reported:4633	POLYVINYL ALCOHOL 1.4 % EYE DROPS			0.639	0.736	0.577
meds_administered:20134	DOBUTAMINE 1,000 MG/250 ML(4,000 MCG/ML) IN 5 % DEXTROSE IV			0.633	1.083	0.866

Variable	Description	Model coefficients for each case definition				
		by ICD-9 code	by EIA (+)	by PCR (+)	EIA or PCR (+)	by any of these
problem_list:438.21	Late effects of cerebrovascular disease, hemiplegia affecting dominant side			0.625	0.517	0.240
meds_reported:13223	DIPHENHYDRAMINE 12.5 MG/5 ML ELIXIR			0.615	0.827	0.513
meds_reported:16045	MEXILETINE 200 MG CAPSULE			0.606	0.865	0.734
problem_list:204.10	Chronic lymphoid leukemia, without mention of having achieved remission			0.594	0.561	0.421
problem_list:V49.70	Unspecified level lower limb amputation status			0.574	0.037	
problem_list:571.6	Biliary cirrhosis			0.573	0.537	0.381
problem_list:924.10	Contusion of lower leg			0.569	0.243	0.217
meds_administered:66106	LIDOCAINE (PF) 4 MG/ML (0.4 %) IN 5 % DEXTROSE IV			0.566	0.573	0.461
meds_administered:400271	AMPICILLIN-SULBACTAM IV SYRINGE 30 MG/ML NS			-0.564	-0.799	-0.738
problem_list:852.21	Subdural hemorrhage following injury without mention of open intracranial wound, with no loss of consciousness			-0.563	-1.777	-1.716
meds_administered:400325	PAMIDRONATE INFUSION			0.560	0.533	0.379
problem_list:785.4	Gangrene			0.547	0.630	0.497
meds_reported:15976	PSEUDOEPHEDRINE 30 MG TABLET			0.545	0.976	0.755
problem_list:995.91	Sepsis			0.541	0.609	0.546
meds_administered:28449	LEVOFLOXACIN 250 MG/50 ML IN 5 % DEXTROSE INTRAVENOUS PIGGYBACK			0.528	0.609	0.499
meds_administered:17395	MANNITOL 20 % INTRAVENOUS SOLUTION			0.506	0.661	0.614
meds_administered:400013	CEFOTAXIME IVPB			0.504	0.389	0.182
meds_administered:16045	MEXILETINE 200 MG CAPSULE			0.501	0.892	0.649
meds_reported:79962	POTASSIUM & SODIUM PHOSPHATES 280 MG-160 MG-250 MG ORAL POWDER PACKET			-0.484	-1.459	-1.291
meds_administered:400367	CISATRACURIUM INFUSION PEDS			-0.472	-0.776	-0.642
meds_administered:345	OCTREOTIDE ACETATE 100 MCG/ML INJECTION SOLUTION			0.471	0.535	0.379
meds_reported:83234	SALIVA STIMULANT AGENTS COMBINATION NO.3 MUCOSAL SPRAY			0.466	0.467	0.460
meds_administered:400366	AMIODARONE IV INFUSION PEDS			-0.455	-0.692	-0.549
problem_list:733.13	Pathologic fracture of vertebrae			0.454	0.581	0.299
meds_reported:12589	LEUPROLIDE (3 MONTH) 22.5 MG IM SYRINGE KIT			0.452	0.697	0.424
meds_administered:400191	MULTIVITAMIN IVPB			0.445	0.622	0.472
meds_administered:400629	CEFEPIME 2 G IVPB			0.430	0.381	0.394
meds_administered:6258	BACITRACIN 500 UNIT/GRAM TOPICAL OINTMENT			0.425	0.804	0.600
problem_list:446.4	Wegener's granulomatosis			0.421	0.229	
meds_reported:20601	SIMETHICONE 80 MG CHEWABLE TABLET			0.405	0.318	0.302
meds_administered:83363	CEFEPIME 1 GRAM/50 ML IN DEXTROSE (ISO-OSMOTIC) INTRAVENOUS PIGGYBACK			0.395	0.399	0.374
meds_administered:400587	DIGOXIN IVPB			0.390	0.402	0.265
surgery_cases:EXPLORATORY LAP/GYN				0.387		
meds_reported:1162	BICALUTAMIDE 50 MG TABLET			0.385	0.624	0.463
problem_list:146.9	Malignant neoplasm of oropharynx, unspecified site			0.384	0.566	0.433
meds_reported:400299	CEFAZOLIN IN D5W 100 ML IVPB			0.379	0.026	
meds_reported:17762	GENTAMICIN 40 MG/ML INJECTION SOLUTION			-0.366		
meds_administered:400577	LEVETIRACETAM IV BURITROL SYRINGE 50 MG/ML NS			-0.365	-0.548	-0.400
meds_administered:400111	CEFEPIME 1 G IVPB			0.363	0.395	0.384
meds_reported:8256	ACYCLOVIR 800 MG TABLET			0.362	0.617	0.561
meds_reported:14971	PRAMIPEXOLE 0.25 MG TABLET			0.359	0.457	0.216

Variable	Description	Model coefficients for each case definition				
		by ICD-9 code	by EIA (+)	by PCR (+)	EIA or PCR (+)	by any of these
problem_list:583.9	Nephritis and nephropathy, not specified as acute or chronic, with unspecified pathological lesion in kidney			0.352	0.324	0.184
surgery_cases:TOE AMPUTATION/VASC				0.346	0.380	0.202
meds_administered:400711	CASPOFUNGIN IVPB 250 ML NS			0.344	0.200	0.108
meds_reported:47	AMANTADINE 50 MG/5 ML SYRUP			0.335	0.434	0.323
problem_list:V55.3	Attention to colostomy			0.333		0.026
meds_reported:11670	ASCORBIC ACID 250 MG TABLET			0.315	0.596	0.214
meds_administered:20832	CIPROFLOXACIN IN D5W 200 MG/100 ML IV PIGGY BACK			0.315	0.451	0.332
problem_list:V17.49	Family history of other cardiovascular diseases			0.311	0.532	0.418
meds_reported:15395	OXYCODONE ER 10 MG TABLET,EXTENDED RELEASE,12 HR			0.311	0.357	0.278
meds_reported:53224	LORAZEPAM ORAL			0.311	0.367	0.215
meds_administered:37780	MESALAMINE 1,000 MG RECTAL SUPPOSITORY			0.300	0.328	
problem_list:730.27	Unspecified osteomyelitis, ankle and foot			0.298	0.251	0.005
problem_list:698.9	Unspecified pruritic disorder			0.294	0.335	0.229
problem_list:707.03	Pressure ulcer, lower back			0.294	0.015	0.047
meds_reported:19377	DOXYCYCLINE HYCLATE 100 MG TABLET			0.294	0.806	0.427
meds_reported:17767	LEVOFLOXACIN 750 MG TABLET			0.285	0.481	0.362
meds_administered:11625	PHENYTOIN SODIUM 50 MG/ML IV			0.284	0.277	0.188
problem_list:576.1	Cholangitis			0.283	0.128	
problem_list:153.3	Malignant neoplasm of sigmoid colon			0.279	0.158	0.087
meds_reported:7262	SENNOSIDES 8.8 MG/5 ML SYRUP			-0.277	-0.710	-0.693
problem_list:719.96	Unspecified disorder of joint, lower leg			0.276	0.431	0.250
abnormal_labs:877-C REACTIVE PROTEIN HS				0.276	0.036	0.022
meds_administered:400078	ACYCLOVIR IVPB			0.275	0.248	0.106
problem_list:342.90	Hemiplegia, unspecified, affecting unspecified side			0.273	0.152	0.017
meds_administered:400216	THIAMINE IVPB			0.272	0.330	0.239
abnormal_labs:2695-BASOPHIL				0.270	0.059	
problem_list:996.66	Infection and inflammatory reaction due to internal joint prosthesis			0.268	0.460	0.385
meds_administered:14510	MISOPROSTOL 100 MCG TABLET			0.262	0.613	0.594
meds_reported:17971	DILTIAZEM 30 MG TAB			0.260	0.372	0.262
meds_administered:39589	CHLORHEXIDINE GLUCONATE 0.12 % MOUTHWASH			0.255	0.329	0.303
meds_administered:571	DOCUSATE SODIUM 50 MG/5 ML ORAL LIQUID			0.248	0.204	0.216
problem_list:783.41	Failure to thrive			0.246	0.290	0.172
problem_list:868.01	Injury to other intra-abdominal organs without mention of open wound into cavity, adrenal gland			-0.241	-0.981	-1.122
meds_reported:15829	SODIUM DI- AND MONOPHOSPHATE-K PHOSPHATE MONO 250 MG TABLET			0.232	0.249	0.230
meds_administered:25445	DEXTROSE 10% IN WATER (D10W) IV SOLN			0.231	0.100	
meds_administered:400054	NITROPRUSSIDE INFUSION ADULT			0.230	0.262	0.152
meds_reported:45678	COLACE ORAL			0.226	0.218	0.147
meds_administered:400929	PANTOPRAZOLE 80MG IV IN NS 100 ML IV INFUSION			0.219	0.246	0.258
problem_list:593.4	Other ureteric obstruction			0.210	0.552	0.339
abnormal_labs:1199-VANCOMYCIN TROUGH				0.201	0.328	0.268
meds_administered:400302	CYTARABINE INFUSION			0.197	0.346	0.098
meds_reported:35104	MIRTAZAPINE 7.5 MG TABLET			0.193	0.289	0.208
problem_list:786.02	Orthopnea			0.187		
meds_reported:16193	B COMPLEX-VITAMIN C-FOLIC ACID 0.8 MG TABLET			0.181	0.252	0.242
meds_reported:38291	IBANDRONATE 150 MG TABLET			0.176	0.199	0.090

Variable	Description	Model coefficients for each case definition				
		by ICD-9 code	by EIA (+)	by PCR (+)	EIA or PCR (+)	by any of these
problem_list:607.89	Other specified disorders of penis			0.172	0.117	
problem_list:198.5	Secondary malignant neoplasm of bone and bone marrow			0.172	0.183	0.056
surgery_cases:NEPHRECTOMY/RADICAL				0.170	0.221	0.020
meds_reported:1093	MESALAMINE ER 250 MG CAPSULE,EXTENDED RELEASE			0.169	0.114	0.020
abnormal_labs:1111-BILIRUBIN DIRECT				0.163	0.079	0.058
meds_administered:37547	PALIFERMIN 6.25 MG INTRAVENOUS SOLUTION			-0.159	-0.603	
surgery_cases:RETRO-PERITONEAL RESECTION				0.158		
meds_administered:400136	DESMOPRESSIN IVPB			0.157	0.132	0.101
meds_administered:5737	GALANTAMINE 4 MG TAB			0.157		
meds_reported:7310	BACITRACIN ZINC 500 UNIT/GRAM OINTMENT			0.153		
meds_reported:6311	DIPHENOXYLATE-ATROPINE 2.5 MG-0.025 MG TABLET			0.152	0.154	0.307
meds_administered:400585	PROPOFOL INFUSION			0.147	0.146	0.114
meds_administered:5344	METHYLDOPA 250 MG TABLET			0.145	0.556	0.389
surgery_cases:PROSTATECTOMY/RADICAL				0.144	0.016	
meds_administered:97831	VANCOMYCIN 750 MG/150 ML IV IN DEXTROSE (ISO-OS) INTRAVENOUS PIGGYBACK			0.142	0.160	0.046
meds_reported:15670	DICLOFENAC 75 MG TAB, DELAYED RELEASE			0.141	0.367	0.219
meds_administered:13962	FUROSEMIDE 40 MG/5 ML ORAL SOLUTION			0.141		
meds_administered:19020	CLOTRIMAZOLE 1 % TOPICAL CREAM			0.136	0.208	0.032
problem_list:583.81	Nephritis and nephropathy, not specified as acute or chronic, in diseases classified elsewhere			0.132	0.052	
meds_administered:2209	CEFEPIME 1 GRAM SOLUTION FOR INJECTION			0.125	0.200	0.112
abnormal_labs:2803-PROTEIN				0.124	0.098	0.071
meds_reported:38726	PARICALCITOL 1 MCG CAPSULE			0.122	0.230	0.048
meds_administered:7262	SENNOSIDES 8.8 MG/5 ML SYRUP			0.122	0.073	
meds_administered:400924	BORTEZOMIB INJECTION 2.5 MG/ML NS			0.121	0.144	0.228
meds_administered:7424	ALLOPURINOL 100 MG TABLET			0.120	0.094	0.041
meds_administered:16568	DIGOXIN 125 MCG TAB			0.119	0.141	0.107
problem_list:405.91	Unspecified renovascular hypertension			0.119	0.370	0.132
meds_reported:5292	PREDNISON 5 MG TABLET			0.118	0.132	0.139
meds_administered:6676	ROCURONIUM 10 MG/ML IV			-0.118	-0.161	-0.123
meds_administered:400933	PANTOPRAZOLE 40 MG IN NS 50 ML			0.113	0.073	0.051
abnormal_labs:2694-EOSINOPHIL				0.113	0.007	
meds_administered:15122	LIDOCAINE 2 % MUCOSAL SOLN			0.112	0.252	0.146
problem_list:447.8	Other specified disorders of arteries and arterioles			0.112	0.299	0.082
problem_list:294.8	Other persistent mental disorders due to conditions classified elsewhere			0.112		
meds_reported:12119	LACTULOSE 10 GRAM ORAL PACKET			0.111	0.236	0.165
meds_reported:63194	TYLENOL ORAL			0.109	0.183	
meds_administered:400039	HYDROMORPHONE INFUSION			-0.105	-1.288	-1.048
meds_administered:107901	NIMODIPINE 60 MG/20 ML ORAL SOLUTION			0.104	0.143	0.085
meds_administered:400018	VANCOMYCIN >500 MG D5W			0.103	0.127	0.103
problem_list:203.00	Multiple myeloma, without mention of having achieved remission			0.102	0.131	0.072
meds_administered:400657	FOLIC ACID IVPB			0.096	0.094	0.050
surgery_cases:ILEOCOLIC RESECTION/LAPAROSCOPY				0.093		
meds_administered:400177	LEVETIRACETAM IVPB			0.092	0.090	0.007
problem_list:795.02	Papanicolaou smear of cervix with atypical squamous cells cannot exclude high grade squamous intraepithelial			0.089	0.238	0.088

Variable	Description	Model coefficients for each case definition				
		by ICD-9 code	by EIA (+)	by PCR (+)	EIA or PCR (+)	by any of these
	lesion (ASC-H)					
problem_list:239.5	Neoplasm of unspecified nature of other genitourinary organs			0.087	0.131	
meds_administered:9311	LEVOTHYROXINE 100 MCG TABLET			0.087	0.129	0.100
meds_reported:17249	IPRATROPIUM-ALBUTEROL 18 MCG-103 MCG/ACTUATION AEROSOL INHALER			0.087	0.051	
abnormal_labs:3498-APPEARANCE				0.086	0.049	0.057
problem_list:456.21	Esophageal varices in diseases classified elsewhere, without mention of bleeding			0.080	0.341	0.203
meds_reported:14090	METOPROLOL TARTRATE 50 MG TAB			0.077	0.123	0.052
abnormal_labs:2806-BILIRUBIN				0.077		
meds_administered:9699	ALBUMIN, HUMAN 25 % IV			0.076	0.024	
meds_reported:4812	CLONAZEPAM 0.5 MG TAB			0.076	0.052	
meds_administered:15914	FOLIC ACID 1 MG TABLET			0.073	0.021	0.015
problem_list:434.11	Cerebral embolism with cerebral infarction			0.073	0.351	0.151
meds_reported:58792	PROSTAT ORAL			0.071		
meds_administered:400048	PANTOPRAZOLE 40MG IV IN NS			0.069	0.059	
meds_administered:1312	NYSTATIN 100,000 UNIT/ML ORAL SUSP			0.067	0.002	
abnormal_labs:4363-WB K - VEN (POCT)				0.064		
meds_administered:11735	BACLOFEN 10 MG TAB			0.064	0.051	0.081
abnormal_labs:1112-BILIRUBIN TOTAL				0.063	0.012	0.006
meds_administered:400603	CALCIUM CHLORIDE IV SYRINGE 20 MG/ML NS			-0.063	-0.034	-0.252
abnormal_labs:2615-BASOPHIL				0.058		
meds_administered:39026	CEFTRIAOXONE 1 GRAM/50 ML IN DEXTROSE (ISO-OSMOT) INTRAVENOUS PIGGYBACK			0.058	0.017	
meds_administered:623	ISOSORBIDE DINITRATE 10 MG TAB			0.058	0.219	0.100
meds_administered:400298	CARMUSTINE INFUSION			0.053	0.108	
meds_administered:12204	PANTOPRAZOLE 40 MG TAB, DELAYED RELEASE			0.052	0.047	0.028
problem_list:V42.2	Heart valve replaced by transplant			0.051	0.392	0.245
abnormal_labs:1151-URIC ACID				0.050		
meds_administered:8829	SODIUM BICARBONATE 1 MEQ/ML (8.4 %) INTRAVENOUS SOLUTION			0.050		0.032
meds_reported:400585	PROPOFOL INFUSION			0.049		
meds_reported:10764	NITROGLYCERIN 0.4 MG/HR TRANSDERM 24 HR PATCH			0.044		
problem_list:V44.8	Other artificial opening status			0.041		
meds_administered:76121	MAGNESIUM SULFATE IN 0.9 % SOD.CHLORIDE 1 GRAM/50 ML IV			0.040	0.013	
meds_administered:10027	SODIUM POLYSTYRENE SULFONATE 15 GRAM/60 ML ORAL SUSPENSION			0.037	0.007	
meds_reported:1131	HYDROXYUREA 500 MG CAPSULE			0.037	0.707	0.539
meds_reported:19553	FINASTERIDE 5 MG TABLET			0.036	0.115	0.022
problem_list:V10.87	Personal history of malignant neoplasm of thyroid			0.035	0.344	0.123
meds_reported:60670	SOAP-COLLOIDAL OATMEAL TOP			-0.033	-0.086	-0.029
abnormal_labs:112-WB SODIUM - VEN				0.032	0.033	0.000
problem_list:443.9	Peripheral vascular disease, unspecified			0.032	0.077	0.044
meds_administered:400072	PHENYLEPHRINE IV INFUSION ADULT			0.032	0.227	0.143
problem_list:995.20	Unspecified adverse effect of unspecified drug, medicinal and biological substance			0.028	0.003	
meds_reported:19176	CHOLECALCIFEROL (VITAMIN D3) 400 UNIT TABLET			0.026	0.107	0.027
meds_reported:4762	PREDNISONE 20 MG TABLET			0.025		
problem_list:571.2	Alcoholic cirrhosis of liver			0.025	0.092	0.162

Variable	Description	Model coefficients for each case definition				
		by ICD-9 code	by EIA (+)	by PCR (+)	EIA or PCR (+)	by any of these
problem_list:278.01	Morbid obesity			-0.024	-0.089	-0.068
meds_administered:400108	CASPOFUNGIN IVPB			-0.022	-0.503	-0.541
meds_reported:5341	QUETIAPINE 200 MG TABLET			0.020		
meds_reported:14037	BUPROPION HCL 75 MG TABLET			0.016		
meds_administered:400137	DEXMEDETOMIDINE INFUSION			0.016	0.012	
problem_list:995.92	Severe sepsis			-0.016	-0.331	-0.050
meds_reported:2209	CEFEPIME 1 GRAM SOLUTION FOR INJECTION			-0.016	-0.019	-0.003
meds_administered:13235	PREDNISON 50 MG TABLET			0.014	0.118	
abnormal_labs:2638-PLATELET				0.014		
meds_administered:39249	FENTANYL (PF) 25 MCG/ML IN 0.9 % SODIUM CHLORIDE INJECTION			0.011	0.023	
meds_reported:7237	LEVOFLOXACIN 250 MG TABLET			0.009		
meds_reported:846	MEGESTROL 400 MG/10 ML (40 MG/ML) ORAL SUSP			-0.009	-0.362	-0.281
abnormal_labs:1118-CHLORIDE				0.009		
abnormal_labs:4375-HCO3 - VEN (POCT)				-0.008	-0.004	-0.008
meds_administered:84910	CALCIUM GLUCONATE 1 GRAM/100 ML IN DEXTROSE 5 % IV			-0.007	-0.746	-0.450
problem_list:518.52	Other pulmonary insufficiency, not elsewhere classified, following trauma and surgery			0.006		
abnormal_labs:3312-pCO2 - VEN				0.006		
problem_list:213.9	Benign neoplasm of bone and articular cartilage, site unspecified			0.006	0.117	0.121
problem_list:427.31	Atrial fibrillation			0.005		
meds_administered:8267	CARVEDILOL 3.125 MG TAB			0.003	0.033	
meds_administered:25755	MORPHINE 4 MG/ML SYRINGE			0.002	0.012	
meds_reported:55966	NOVOLOG SUBQ			0.001	0.007	
meds_reported:88122	CETIRIZINE 5 MG/5 ML ORAL SOLN				-3.037	-2.511
meds_reported:1362	POTASSIUM CHLORIDE ER 10 MEQ CAPSULE,EXTENDED RELEASE				2.751	2.523
problem_list:197.2	Secondary malignant neoplasm of pleura				1.137	1.046
meds_administered:10433	ACETAMINOPHEN 120 MG RECTAL SUPPOSITORY				-1.032	-1.074
problem_list:619.8	Other specified fistulas involving female genital tract				-0.874	-0.602
meds_reported:46955	DESMOPRESSIN NASL				-0.869	-0.747
problem_list:238.77	Post-transplant lymphoproliferative disorder (PTLD)				-0.831	-0.634
meds_reported:45975	CONJ ESTROG-MEDROXYPROGEST ACE ORAL				-0.772	-0.295
meds_administered:66099	LIDOCAINE (PF) 100 MG/5 ML (2 %) IV SYRINGE				0.710	0.572
meds_reported:56703	OXCARBAZEPINE ORAL				-0.705	-0.580
meds_reported:14370	ZIDOVUDINE 300 MG TAB				0.703	0.615
meds_reported:13872	OXACILLIN 2 GRAM IV SOLUTION				-0.667	-0.457
meds_administered:1026	IVERMECTIN 3 MG TABLET				-0.603	-0.595
meds_administered:400107	CALCIUM CHLORIDE IVPB				0.525	0.454
meds_administered:19144	ALTEPLASE 2 MG SOLUTION FOR INJECTION				-0.517	-0.464
meds_administered:80963	FOSPHENYTOIN 500 MG PE/10 ML INJECTION				0.508	0.372
meds_reported:5511	SODIUM CHLORIDE 0.45 % INTRAVENOUS SOLUTION				-0.463	-0.952
problem_list:202.00	Nodular lymphoma, unspecified site, extranodal and solid organ sites				0.439	
meds_reported:11625	PHENYTOIN SODIUM 50 MG/ML IV				-0.415	-0.222
problem_list:295.92	Unspecified schizophrenia, chronic				-0.396	-0.313
meds_administered:47	AMANTADINE 50 MG/5 ML SYRUP				-0.366	-0.301
meds_reported:88724	PROPOFOL (PF) 1,000 MG/100 ML (10 MG/ML) IV				-0.336	-0.139
meds_reported:2826	GLYCOPYRROLATE 0.2 MG/ML				-0.327	-0.106

Variable	Description	Model coefficients for each case definition				
		by ICD-9 code	by EIA (+)	by PCR (+)	EIA or PCR (+)	by any of these
	INJECTION					
problem_list:171.6	Malignant neoplasm of connective and other soft tissue of pelvis				0.314	0.349
meds_reported:41686	AMIODARONE IV				-0.292	-0.028
problem_list:238.73	High grade myelodysplastic syndrome lesions				-0.284	-0.207
meds_administered:20384	SODIUM CHLORIDE 4 MEQ/ML INTRAVENOUS SOLUTION				-0.257	-0.058
meds_reported:45779	COLOCORT RECT				-0.256	-0.127
meds_administered:25765	FILGRASTIM 300 MCG/0.5 ML INJECTION SYRINGE				-0.251	-0.109
meds_reported:7856	DIOVAN 320 MG TABLET				-0.246	-0.055
meds_reported:98048	RUFINAMIDE 40 MG/ML ORAL SUSPENSION				-0.244	
problem_list:348.5	Cerebral edema				0.236	0.006
meds_administered:36638	ZINC OXIDE-WHITE PETROLATUM 15 %-49 % TOPICAL OINTMENT				-0.228	-0.155
meds_reported:41180	ALDACTONE ORAL				0.208	
meds_administered:36549	DULOXETINE 60 MG CAPSULE, DELAYED RELEASE				0.200	0.110
meds_reported:11704	ETHAMBUTOL 400 MG TABLET				-0.199	-0.108
meds_reported:76543	CALCIUM CARBONATE 250 MG (625 MG) TABLET				0.185	0.230
meds_administered:8342	LIDOCAINE-PRILOCAINE 2.5 %-2.5 % TOPICAL CREAM				0.177	
problem_list:578.1	Blood in stool				0.176	0.005
meds_reported:6521	GABAPENTIN 250 MG/5 ML ORAL SOLUTION				-0.175	
meds_reported:12511	CHLORPROMAZINE 25 MG TAB				-0.170	
meds_reported:43409	BIDIL ORAL				-0.166	
meds_reported:103204	XTANDI 40 MG CAPSULE				-0.162	-0.008
meds_administered:36547	DULOXETINE 20 MG CAP, DELAYED RELEASE				0.149	0.073
problem_list:277.01	Cystic fibrosis with meconium ileus				-0.143	-0.102
meds_reported:13402	URSODIOL 300 MG CAP				-0.143	-0.153
meds_reported:46270	CRITIC-AID CLEAR TOP				-0.137	
abnormal_labs:819-IG M QUANT					-0.134	-0.217
meds_administered:73290	POSACONAZOLE 200 MG/5 ML (40 MG/ML) ORAL SUSP				-0.130	
meds_administered:12044	DORNASE ALFA 1 MG/ML SOLN FOR INHALATION				-0.129	-0.147
problem_list:V42.82	Peripheral stem cells replaced by transplant				-0.125	-0.146
meds_administered:17268	BUDESONIDE DR & ER 3 MG CAP, DELAYED & EXTENDED RELEASE				-0.125	
abnormal_labs:20246-EOSINOPHIL					-0.120	-0.031
problem_list:188.9	Malignant neoplasm of bladder, part unspecified				0.119	0.049
meds_reported:7576	FOLIC ACID 400 MCG TABLET				0.118	
meds_administered:400567	TOBRAMYCIN IV BURITROL SYRINGE 40 MG/ML STERILE DIL				-0.113	-0.057
meds_administered:400076	ACETYLCYSTEINE (THIRD DOSE) IV INFUSION				-0.113	-0.079
problem_list:531.50	Chronic or unspecified gastric ulcer with perforation, without mention of obstruction				-0.111	
meds_reported:5245	SIMVASTATIN 10 MG TABLET				0.109	0.086
meds_reported:73290	POSACONAZOLE 200 MG/5 ML (40 MG/ML) ORAL SUSP				-0.103	-0.141
problem_list:428.43	Acute on chronic combined systolic and diastolic heart failure				0.100	
meds_reported:496	AMINOCAPROIC ACID 500 MG TAB				-0.098	
meds_administered:78303	FERROUS GLUCONATE 325 MG (37.5 MG IRON) TAB				0.095	

Variable	Description	Model coefficients for each case definition				
		by ICD-9 code	by EIA (+)	by PCR (+)	EIA or PCR (+)	by any of these
meds_reported:62237	THERAGRAN-M ORAL				-0.085	-0.083
meds_reported:36256	RIFAXIMIN 200 MG TAB				-0.083	-0.149
surgery_cases:LIVER RESECTION/PARTIAL					0.081	0.096
meds_reported:19195	TACROLIMUS 1 MG CAPSULE				-0.080	
meds_reported:20058	SPIRONOLACTONE 50 MG TAB				-0.076	-0.098
abnormal_labs:2871-RBC					-0.075	
meds_reported:26598	AVODART 0.5 MG CAPSULE				-0.074	-0.001
problem_list:568.89	Other specified disorders of peritoneum				0.072	
meds_reported:689	FUROSEMIDE 10 MG/ML INJECTION				-0.070	-0.056
problem_list:719.41	Pain in joint, shoulder region				-0.069	-0.075
problem_list:299.00	Autistic disorder, current or active state				0.067	
abnormal_labs:8802-ALPHA 1 GLOB					-0.066	-0.021
meds_reported:7424	ALLOPURINOL 100 MG TABLET				0.063	
meds_reported:13303	LIDOCAINE 5 % (700 MG/PATCH) ADHESIVE PATCH				-0.061	-0.083
meds_administered:5831	TRETINOIN (CHEMOTHERAPY) 10 MG CAP				-0.056	-0.013
abnormal_labs:3769-UROBILINOGEN - DSTK					-0.054	-0.083
problem_list:787.03	Vomiting alone				-0.052	-0.049
meds_reported:17263	WARFARIN 1 MG TAB				-0.050	-0.006
meds_administered:400044	METHYLPREDNISOLONE IVPB				-0.050	
meds_reported:135	QUETIAPINE 25 MG TABLET				-0.048	-0.025
problem_list:V43.65	Knee joint replacement				-0.047	-0.053
problem_list:780.60	Fever, unspecified				0.047	0.028
meds_administered:2424	ALBUTEROL SULFATE 2.5 MG/3 ML (0.083 %) SOLUTION FOR NEBULIZATION				-0.046	-0.045
meds_administered:17793	ZOLPIDEM 10 MG TAB				-0.046	
meds_administered:23930	ENOXAPARIN 60 MG/0.6 ML SUB-Q SYRINGE				-0.044	-0.060
problem_list:782.4	Jaundice, unspecified, not of newborn				-0.044	-0.081
meds_administered:16254	KETAMINE 50 MG/ML INJECTION SOLUTION				-0.043	-0.059
problem_list:V43.3	Heart valve replaced by other means				-0.042	-0.045
meds_reported:42580	AVAPRO ORAL				0.040	
meds_administered:113616	OXYCODONE ER 10 MG TABLET,CRUSH RESISTANT,EXTENDED RELEASE 12 HR				0.039	
meds_administered:3931	CHLORPROMAZINE 100 MG TABLET				0.038	
meds_reported:1217	ATORVASTATIN 80 MG TABLET				-0.038	-0.056
problem_list:275.42	Hypercalcemia				0.038	
meds_administered:17108	DEXAMETHASONE 4 MG/ML INJECTION SOLUTION				-0.036	-0.060
problem_list:577.0	Acute pancreatitis				0.036	0.053
meds_reported:18790	LOSARTAN 100 MG TABLET				-0.034	-0.051
meds_administered:2863	CETIRIZINE 10 MG TABLET				0.032	
abnormal_labs:4371-pH - VEN (POCT)					0.032	0.056
meds_administered:15738	CEFOTAXIME 2 GRAM/50 ML IN DEXTROSE 5 % INTRAVENOUS PIGGYBACK				0.029	
meds_administered:16526	HYDROCHLOROTHIAZIDE 25 MG TABLET				-0.029	-0.052
meds_reported:2042	LACTULOSE 10 GRAM/15 ML SYRUP				-0.028	-0.026
meds_reported:103346	MORPHINE 2 MG/ML INTRAVENOUS CARTRIDGE				-0.026	
problem_list:428.33	Acute on chronic diastolic heart failure				0.023	
problem_list:250.50	Diabetes with ophthalmic manifestations, type II or unspecified type, not stated as uncontrolled				-0.022	
problem_list:413.9	Other and unspecified angina pectoris				0.020	
meds_reported:55912	NORVASC ORAL				-0.020	
abnormal_labs:1233-U-COCAINE					-0.020	-0.041
meds_administered:15395	OXYCODONE ER 10 MG				-0.020	-0.035

Variable	Description	Model coefficients for each case definition				
		by ICD-9 code	by EIA (+)	by PCR (+)	EIA or PCR (+)	by any of these
	TABLET,EXTENDED RELEASE,12 HR					
meds_administered:12359	OSELTAMIVIR 75 MG CAPSULE				-0.019	
meds_administered:83375	CLEVIDIPINE 25 MG/50 ML INTRAVENOUS EMULSION				0.018	
abnormal_labs:309-IONIZED CA - ART WB					-0.018	
meds_administered:9721	LEVOTHYROXINE 88 MCG TABLET				-0.018	
problem_list:458.9	Hypotension, unspecified				-0.018	-0.032
meds_administered:25448	LINEZOLID 600 MG/300 ML IV				-0.017	-0.107
problem_list:338.3	Neoplasm related pain (acute) (chronic)				-0.017	-0.020
meds_administered:400582	CUSTOM MIXTURE				0.016	
meds_administered:300054	NIMODIPINE 30 MG/ML ORAL SYRINGE				-0.016	
abnormal_labs:300-GLUCOSE (MPOCT) BY METER					-0.015	-0.033
meds_reported:52316	KEPPRA ORAL				0.014	
problem_list:780.93	Memory loss				-0.013	
meds_reported:2226	CLONIDINE 0.1 MG/24 HR WEEKLY TRANSDERMAL PATCH				-0.013	-0.092
meds_administered:98011	LEVETIRACETAM 1,000 MG/100 ML IN SOD.CHLORIDE (ISO-OSM) IV PIGGYBACK				0.013	
abnormal_labs:4364-HEMATOCRIT-VEN (GEM - MPOCT)					-0.013	
meds_administered:27635	FILGRASTIM 480 MCG/1.6 ML INJECTION				-0.012	
meds_administered:400073	OCTREOTIDE IV INFUSION ADULT				0.012	
meds_administered:5312	OCTREOTIDE ACETATE 50 MCG/ML INJECTION				0.012	
meds_reported:4791	ISOSORBIDE MONONITRATE ER 30 MG TABLET,EXTENDED RELEASE 24 HR				-0.010	-0.022
meds_administered:27973	APREPITANT 125 MG CAP				-0.010	
meds_administered:5499	NIMODIPINE 30 MG CAP				-0.009	-0.014
problem_list:600.90	Hyperplasia of prostate, unspecified, without urinary obstruction and other lower urinary symptoms (LUTS)				-0.008	-0.024
abnormal_labs:2111-HGB S					-0.008	-0.141
problem_list:250.10	Diabetes with ketoacidosis, type II or unspecified type, not stated as uncontrolled				-0.008	
meds_administered:73128	ZINC SULFATE 220 MG (50 MG) CAP				-0.007	-0.011
meds_administered:896	HYDRALAZINE 10 MG TABLET				0.007	
meds_administered:18020	DEXAMETHASONE 0.5 MG TAB				0.006	0.058
abnormal_labs:3763-GLUCOSE - DIPSTICK (MPOCT)					-0.006	
abnormal_labs:4499-C REACTIVE PROTEIN					-0.006	
problem_list:431	Intracerebral hemorrhage				0.004	0.065
problem_list:432.9	Unspecified intracranial hemorrhage				-0.004	
problem_list:348.30	Encephalopathy, unspecified				-0.003	
meds_administered:17641	LEVOFLOXACIN 500 MG TAB				-0.003	
meds_administered:3623	LIOthyRONINE 25 MCG TABLET				0.003	
meds_reported:25172	PRENATAL MULTIVIT-CA-MIN-FE-FA TABLET				-0.003	-0.012
problem_list:794.39	Other nonspecific abnormal results of function study of cardiovascular system				-0.002	-0.001
meds_administered:4480	SUCRALFATE 1 GRAM TABLET				0.002	
problem_list:295.90	Unspecified schizophrenia, unspecified				-0.001	-0.023
problem_list:891.0	Open wound of knee, leg [except thigh], and ankle, without mention of complication					0.821
meds_administered:19248	SODIUM FLUORIDE 1.1 % DENTAL GEL					-0.444
problem_list:284.11	Antineoplastic chemotherapy induced pancytopenia					-0.363
problem_list:E819.7	Motor vehicle traffic accident of unspecified nature injuring pedestrian					-0.348
problem_list:453.3	Other venous embolism and thrombosis					-0.345

Variable	Description	Model coefficients for each case definition				
		by ICD-9 code	by EIA (+)	by PCR (+)	EIA or PCR (+)	by any of these
	of renal vein					
problem_list:459.9	Unspecified circulatory system disorder					0.292
problem_list:038.40	Septicemia due to gram-negative organism, unspecified					-0.269
surgery_cases:COLECTOMY/SUBTOTAL						0.259
meds_reported:79246	RAMIPRIL 10 MG TAB					0.254
meds_reported:93893	SIMETHICONE 80 MG TABLET					0.190
meds_reported:63649	VANCOMYCIN (BULK) MISC					-0.139
meds_administered:74499	LIALDA 1.2 G TABLET,DELAYED RELEASE					-0.129
problem_list:156.0	Malignant neoplasm of gallbladder					0.113
meds_administered:38323	ENTECAVIR 0.5 MG TABLET					-0.112
meds_reported:85032	LEVETIRACETAM 500 MG/5 ML (5 ML) ORAL SOLN					-0.099
meds_administered:9194	FLUCONAZOLE IN SODIUM CHLORIDE (ISO-OSM) 200 MG/100 ML IV PIGGY BACK					-0.092
problem_list:263.9	Unspecified protein-calorie malnutrition					-0.073
meds_reported:16133	LAMIVUDINE 10 MG/ML ORAL SOLUTION					0.065
meds_reported:20627	OXYCODONE 5 MG TABLET					0.054
meds_reported:8769	WARFARIN 3 MG TABLET					0.050
meds_administered:12134	CEPHALEXIN 500 MG CAPSULE					0.050
meds_administered:400516	FILGRASTIM IVPB					0.050
surgery_cases:LIVER SEGMENT LOBECTOMY/GS						0.040
meds_administered:6600	TOPIRAMATE 25 MG TABLET					0.031
meds_reported:93464	RIFAXIMIN 550 MG TABLET					-0.029
meds_administered:6134	TORSEMIDE 10 MG TABLET					-0.026
meds_administered:85249	NEBIVOLOL 20 MG TABLET					-0.024
meds_administered:28710	SODIUM CHLORIDE 0.65 % NASAL SPRAY AEROSOL					0.022
meds_administered:29117	ASCORBIC ACID 500 MG/5 ML SYRUP					-0.016
meds_reported:2565	CITALOPRAM 40 MG TABLET					-0.015
abnormal_labs:1141-SALICYLATE						-0.015
abnormal_labs:4376-TOT CO2 - VEN (POCT)						-0.013
problem_list:716.90	Arthropathy, unspecified, site unspecified					-0.011
meds_reported:2767	POLYETHYLENE GLYCOL 3350 17 GRAM ORAL POWDER PACKET					-0.009
meds_administered:3590	HYDROMORPHONE 50 MG/50 ML IN 0.9 % SODIUM CHLORIDE INJECTION					-0.009
abnormal_labs:20244-MONOCYTE						-0.008
meds_administered:6661	HYDRALAZINE 25 MG TABLET					-0.008
problem_list:298.9	Unspecified psychosis					-0.008
meds_administered:16093	ALLOPURINOL 300 MG TABLET					-0.007
meds_reported:5836	METOLAZONE 5 MG TAB					-0.007
meds_administered:7331	PROCHLORPERAZINE MALEATE 10 MG TABLET					-0.006
problem_list:650	Normal delivery					-0.004
Total number of non-zero, non-intercept coefficients:		615	373	748	1020	1027