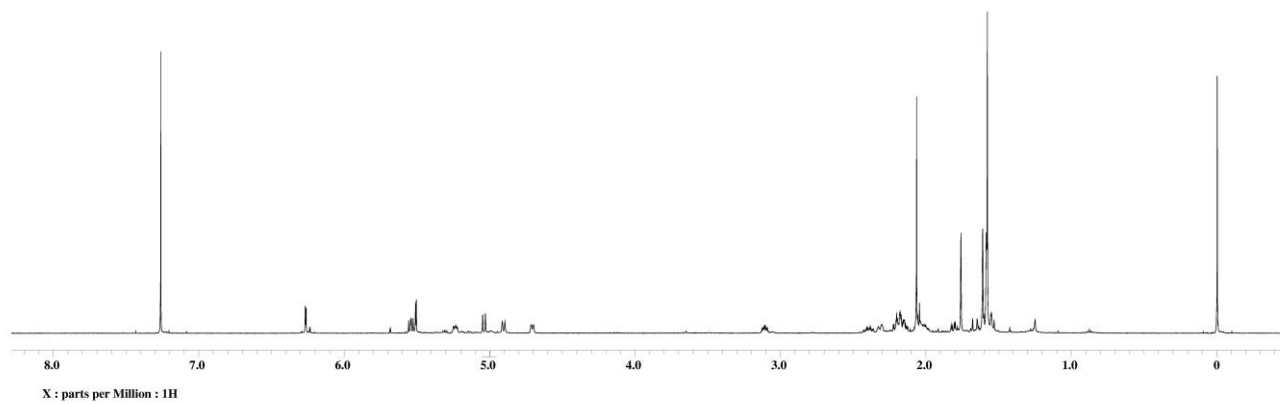


## Supplementary Materials

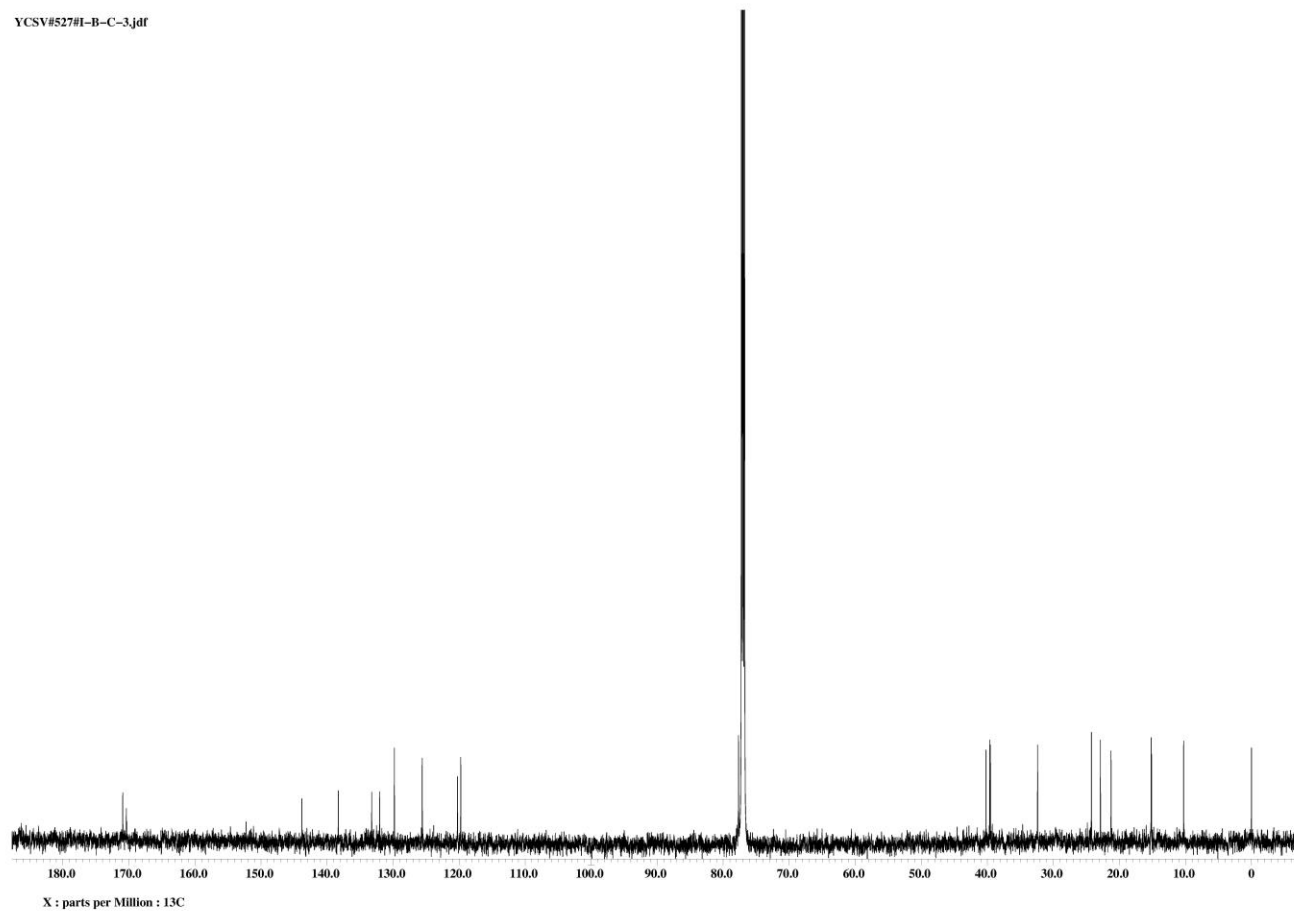
- Figure S1.**  $^1\text{H}$ -NMR spectrum of **1** in  $\text{CDCl}_3$  (600 MHz).
- Figure S2.**  $^{13}\text{C}$ -NMR spectrum of **1** in  $\text{CDCl}_3$  (150 MHz).
- Figure S3.** HSQC spectrum of **1** in  $\text{CDCl}_3$ .
- Figure S4.**  $^1\text{H}$ - $^1\text{H}$  COSY spectrum of **1** in  $\text{CDCl}_3$ .
- Figure S5.** HMBC spectrum of **1** in  $\text{CDCl}_3$ .
- Figure S6.** NOESY spectrum of **1** in  $\text{CDCl}_3$ .
- Figure S7.** HRESI-MS data of **1**.
- Figure S8.**  $^1\text{H}$ -NMR spectrum of **2** in  $\text{CDCl}_3$  (600 MHz).
- Figure S9.**  $^{13}\text{C}$ -NMR spectrum of **2** in  $\text{CDCl}_3$  (150 MHz).
- Figure S10.** HSQC spectrum of **2** in  $\text{CDCl}_3$ .
- Figure S11.**  $^1\text{H}$ - $^1\text{H}$  COSY spectrum of **2** in  $\text{CDCl}_3$ .
- Figure S12.** HMBC spectrum of **2** in  $\text{CDCl}_3$ .
- Figure S13.** NOESY spectrum of **2** in  $\text{CDCl}_3$ .
- Figure S14.** HRESI-MS data of **2**.

YCSV#526#I-B-H-3.jdf

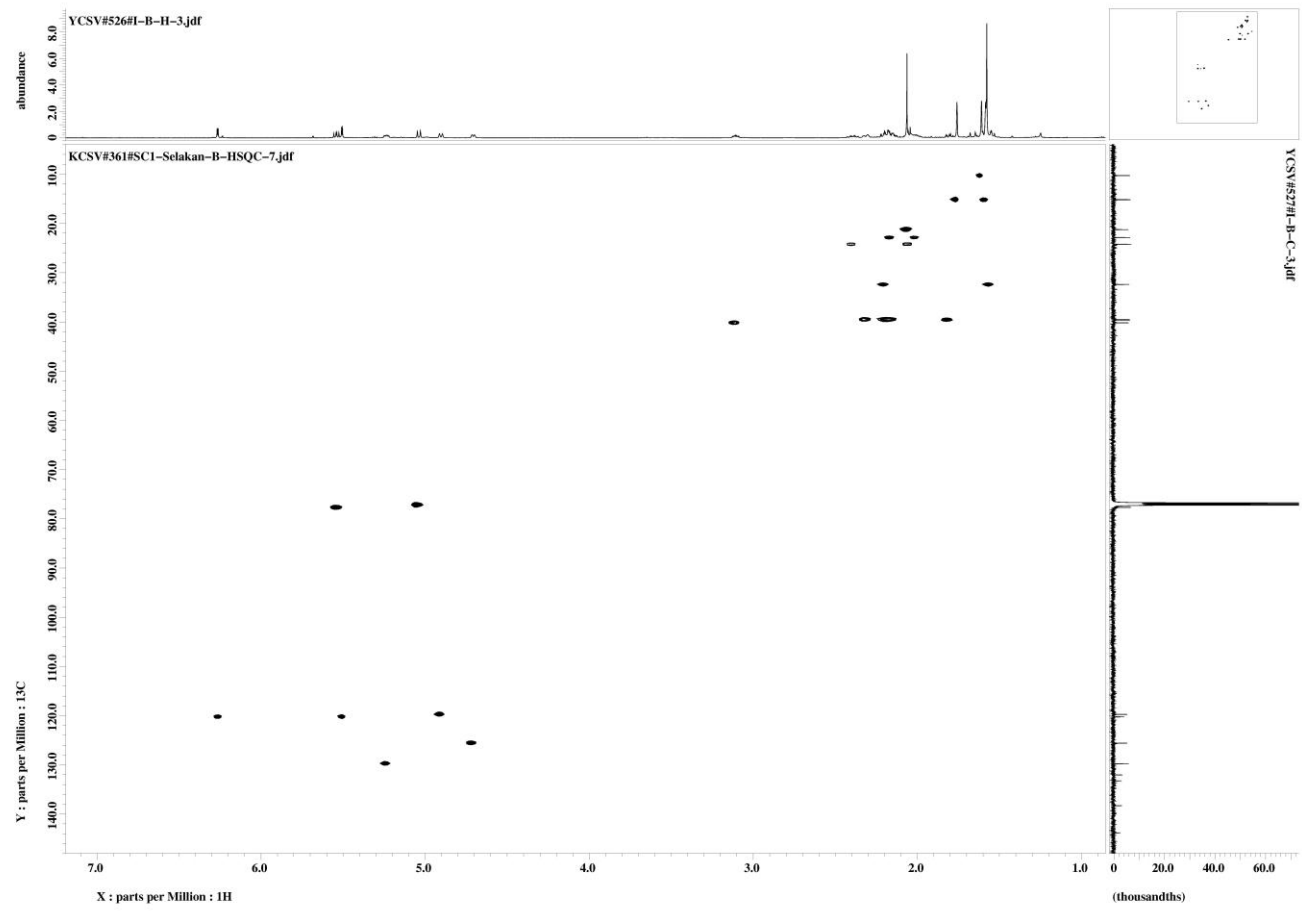


**Figure S1.** <sup>1</sup>H-NMR spectrum of **1** in CDCl<sub>3</sub> (600 MHz).

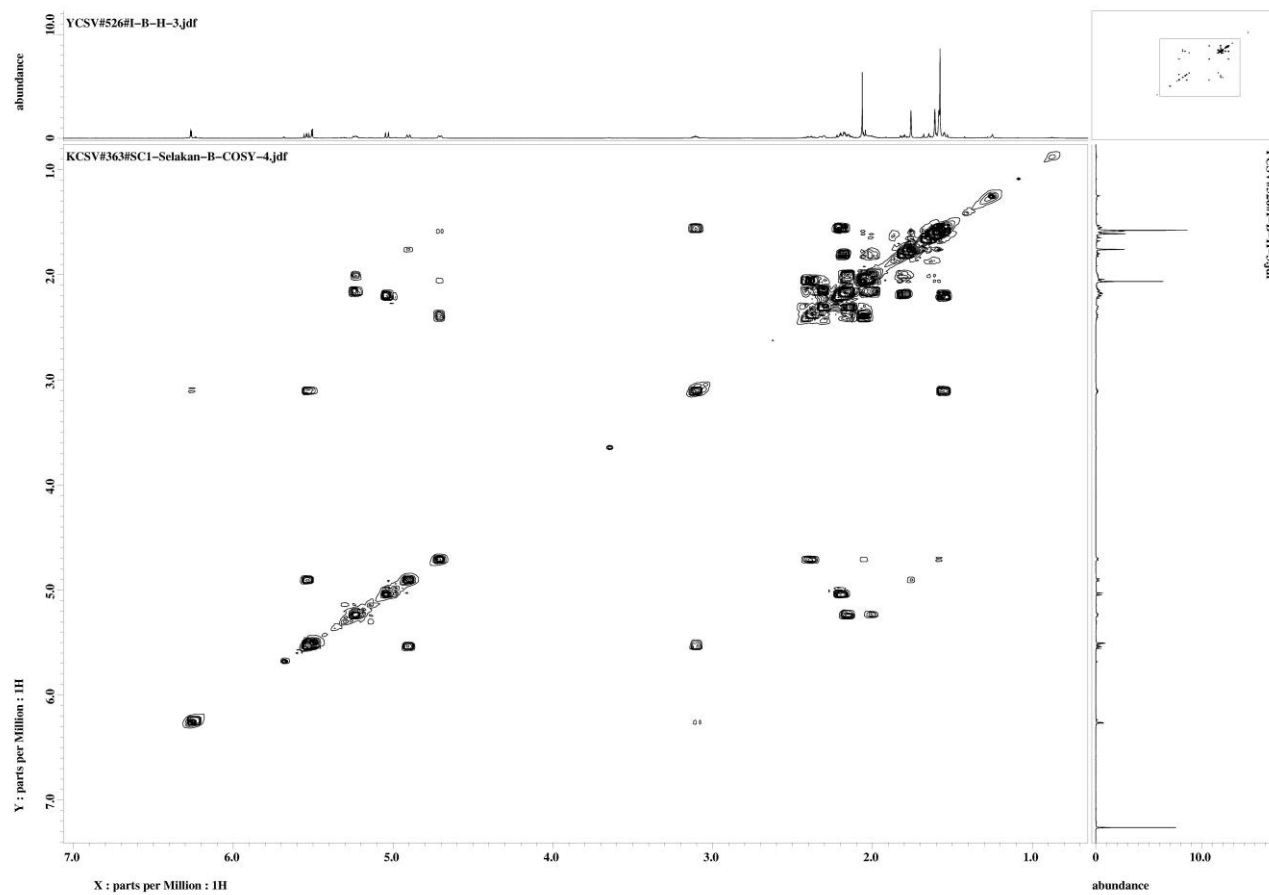
YCSV#527#1-B-C-3.jdf



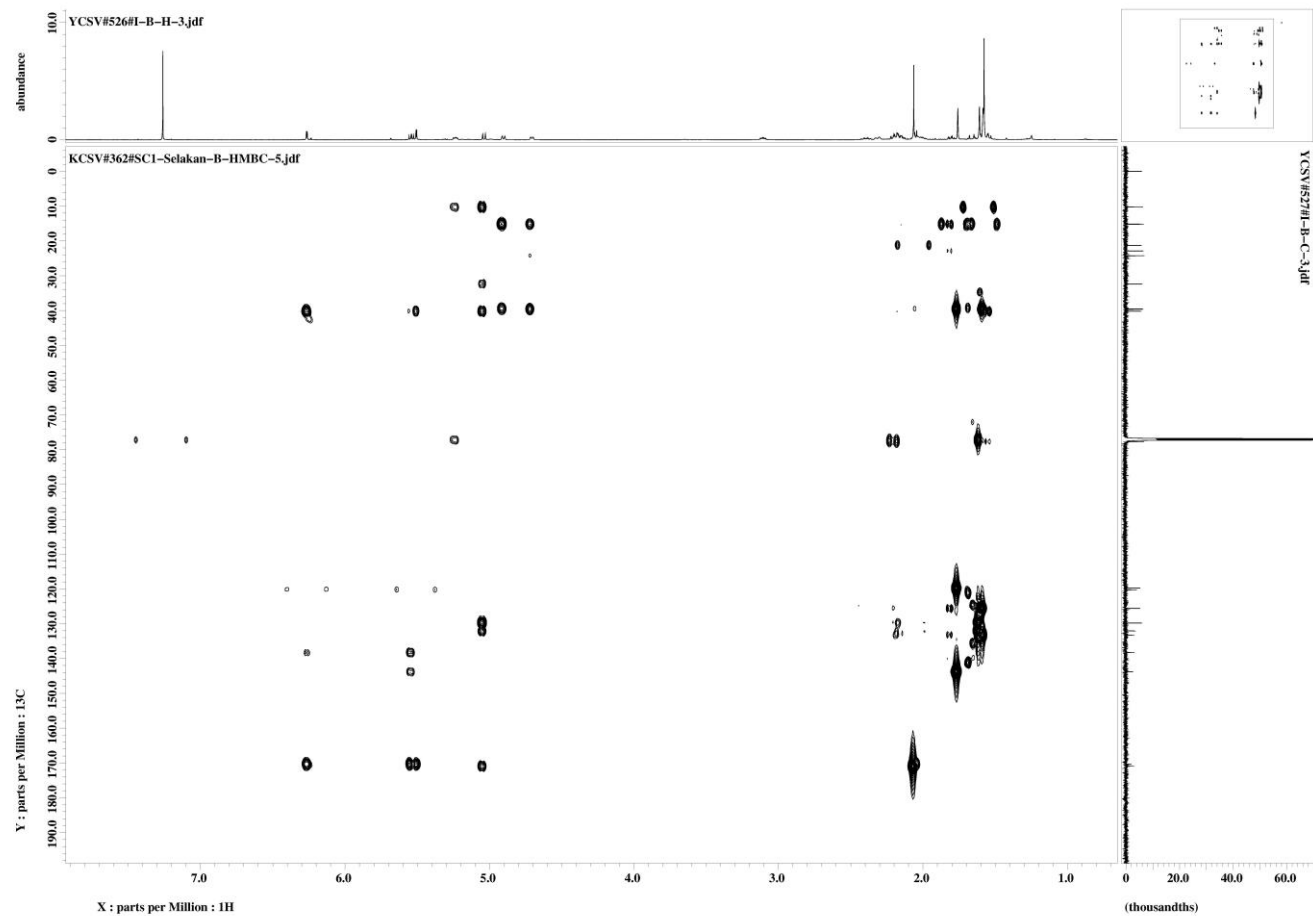
**Figure S2.**  $^{13}\text{C}$ -NMR spectrum of **1** in  $\text{CDCl}_3$  (150 MHz).



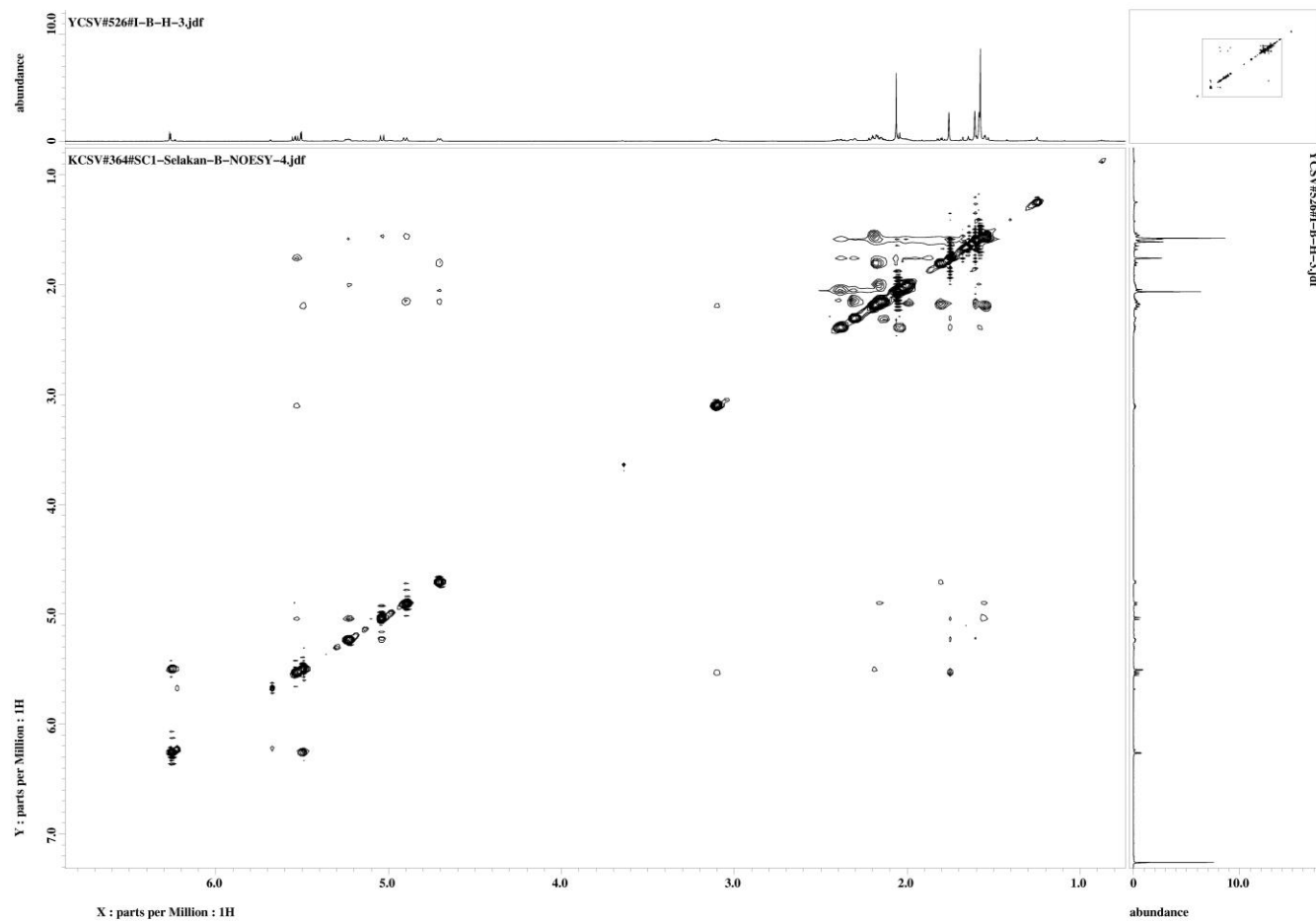
**Figure S3.** HSQC spectrum of **1** in CDCl<sub>3</sub>



**Figure S4.**  $^1\text{H}$ - $^1\text{H}$  COSY spectrum of **1** in  $\text{CDCl}_3$ .



**Figure S5.** HMBC spectrum of **1** in  $\text{CDCl}_3$ .



**Figure S6.** NOESY spectrum of **1** in  $\text{CDCl}_3$ .

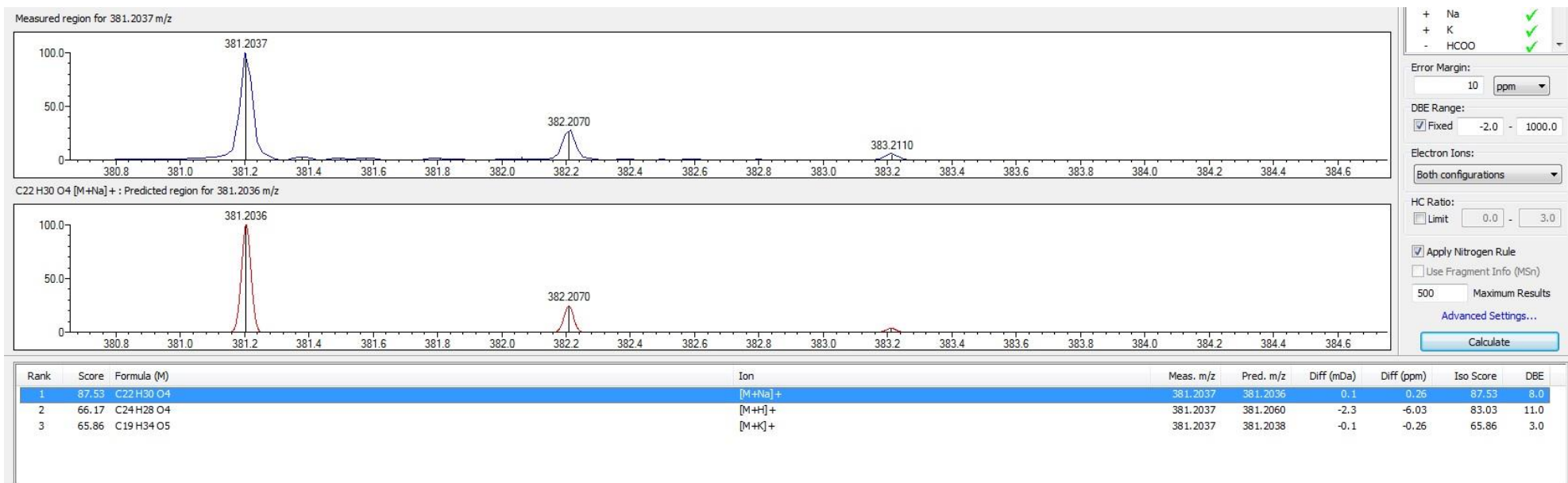
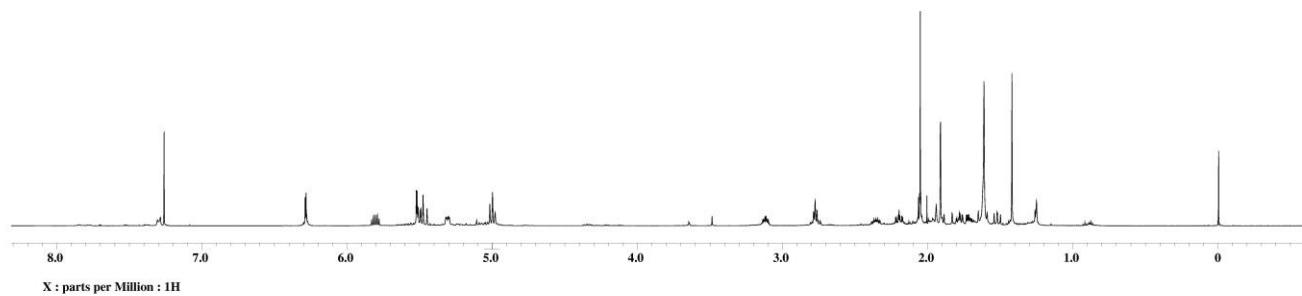
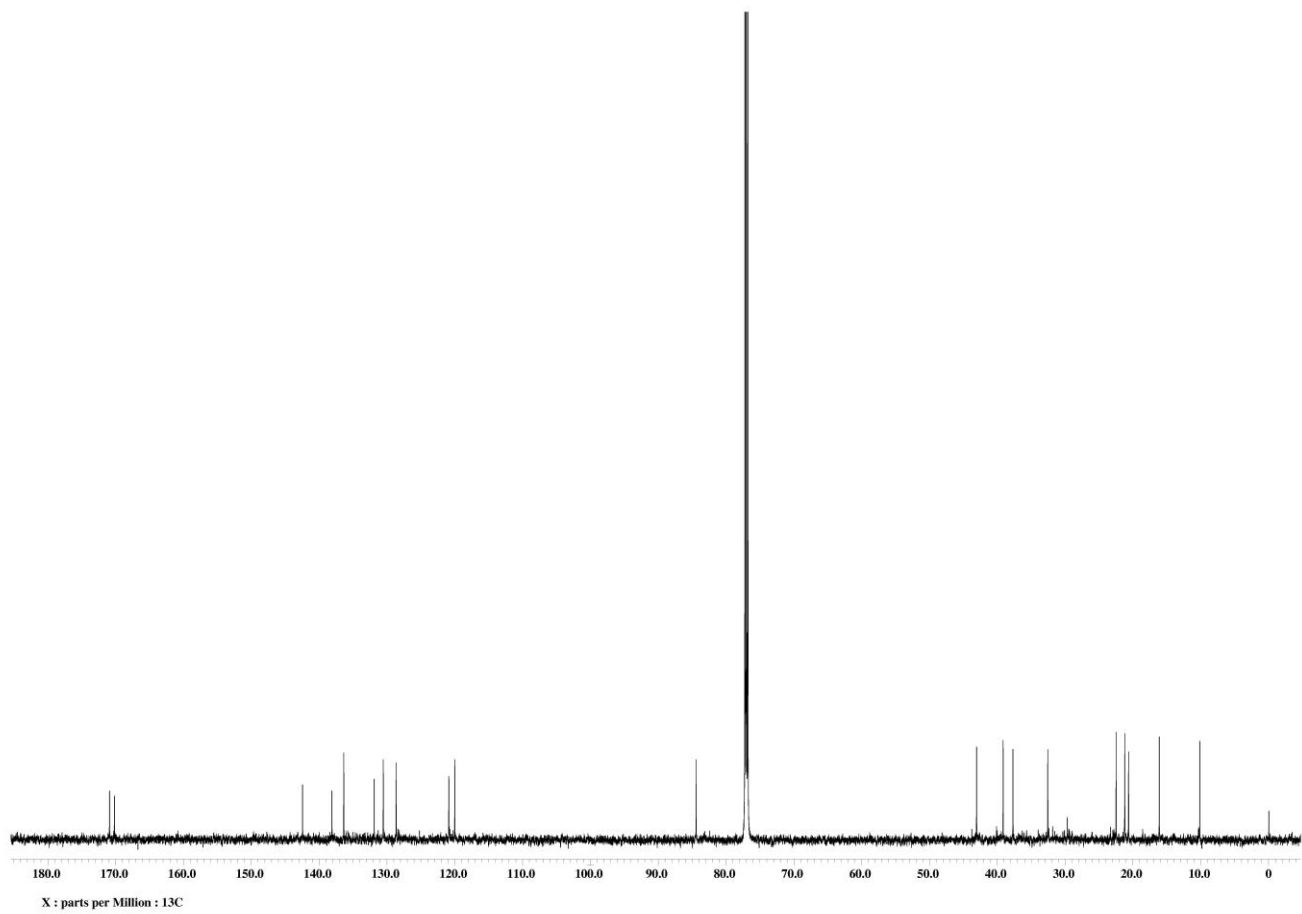


Figure S7. HRESI-MS data of 1.





**Figure S8.** <sup>1</sup>H-NMR spectrum of **2** in CDCl<sub>3</sub> (600 MHz).



**Figure S9.**  $^{13}\text{C}$ -NMR spectrum of **2** in  $\text{CDCl}_3$  (150 MHz).

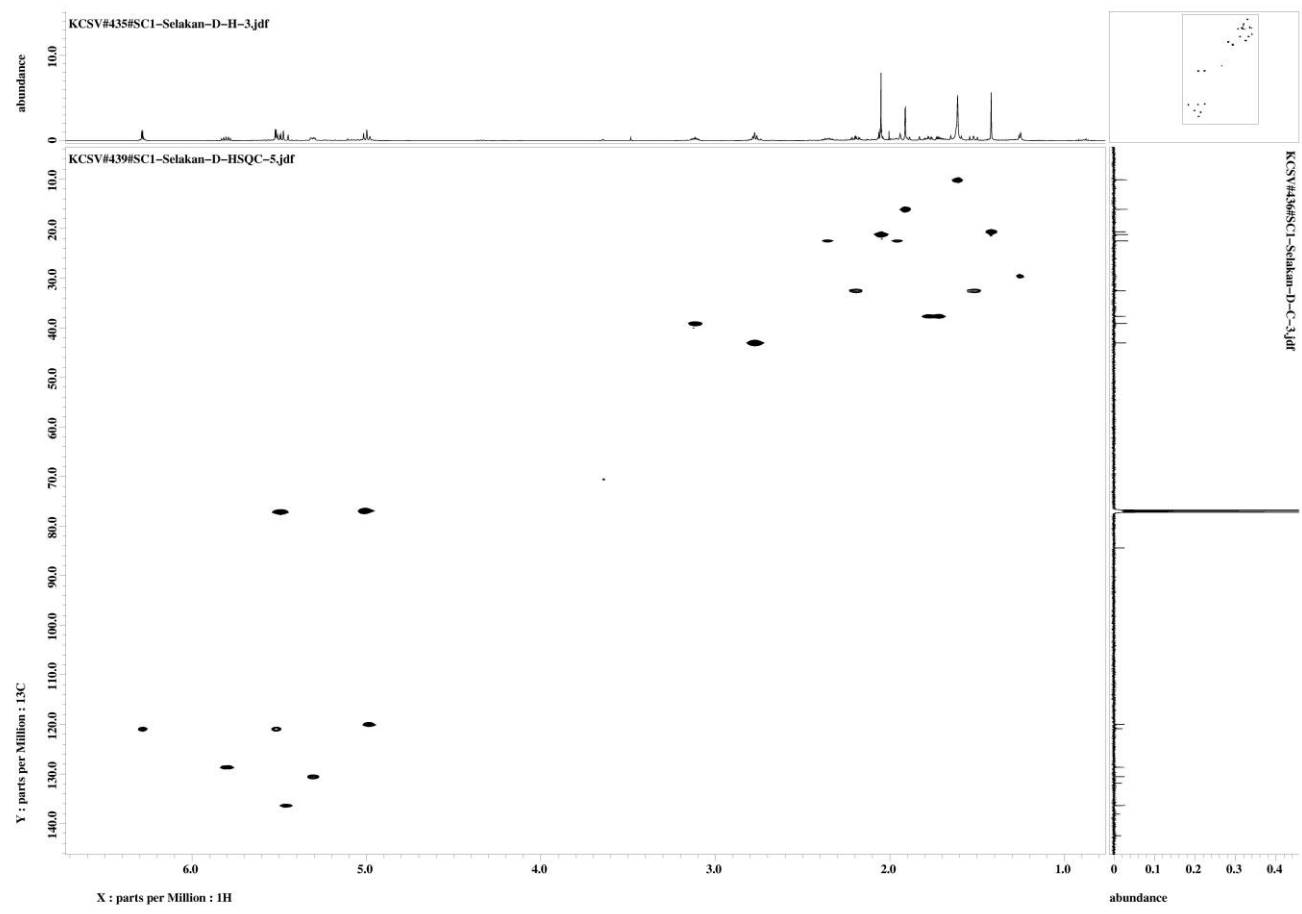
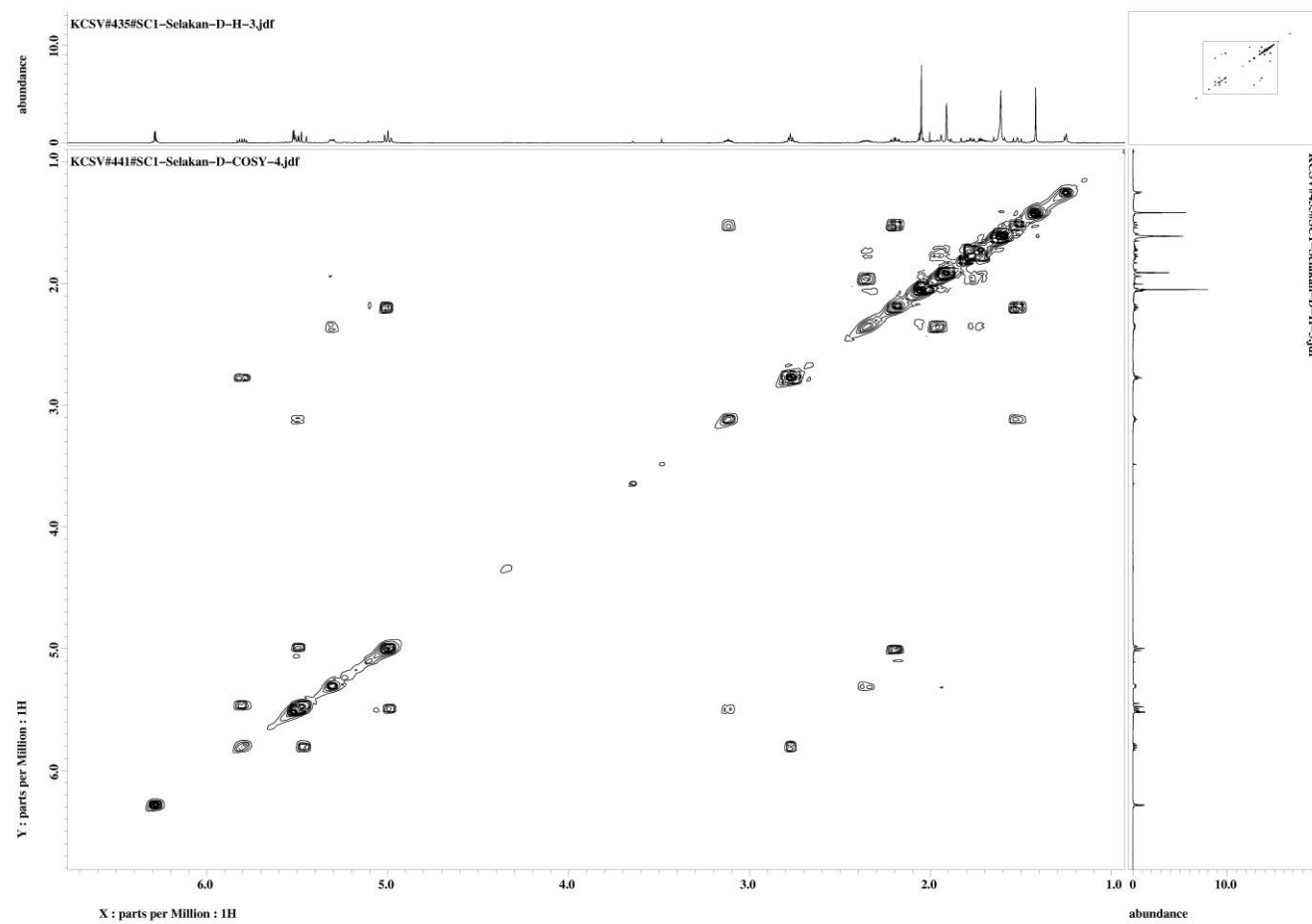
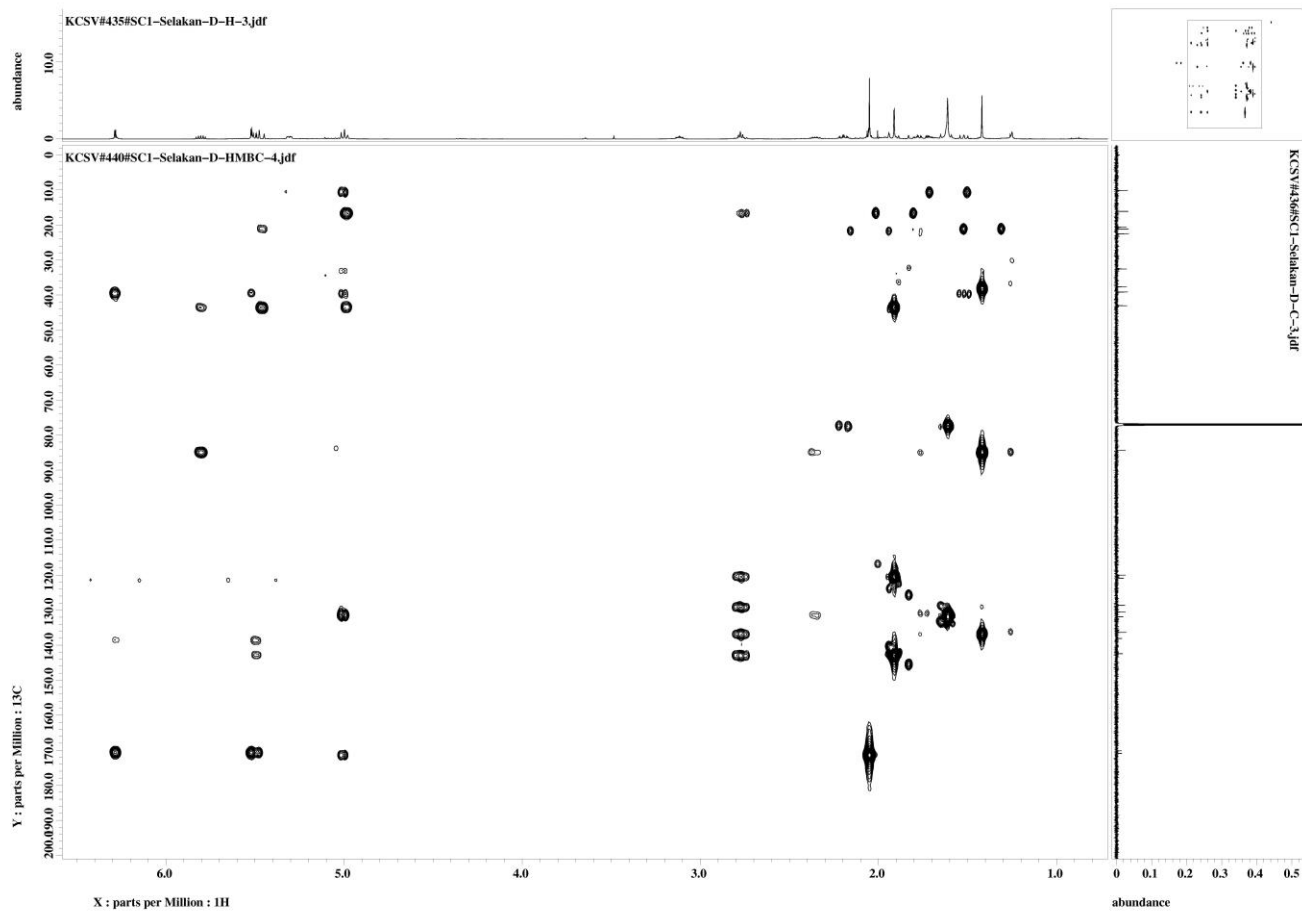


Figure S10. HSQC spectrum of **2** in CDCl<sub>3</sub>.



**Figure S11.**  $^1\text{H}$ - $^1\text{H}$  COSY spectrum of **2** in  $\text{CDCl}_3$ .



**Figure S12.** HMBC spectrum of **2** in  $\text{CDCl}_3$ .

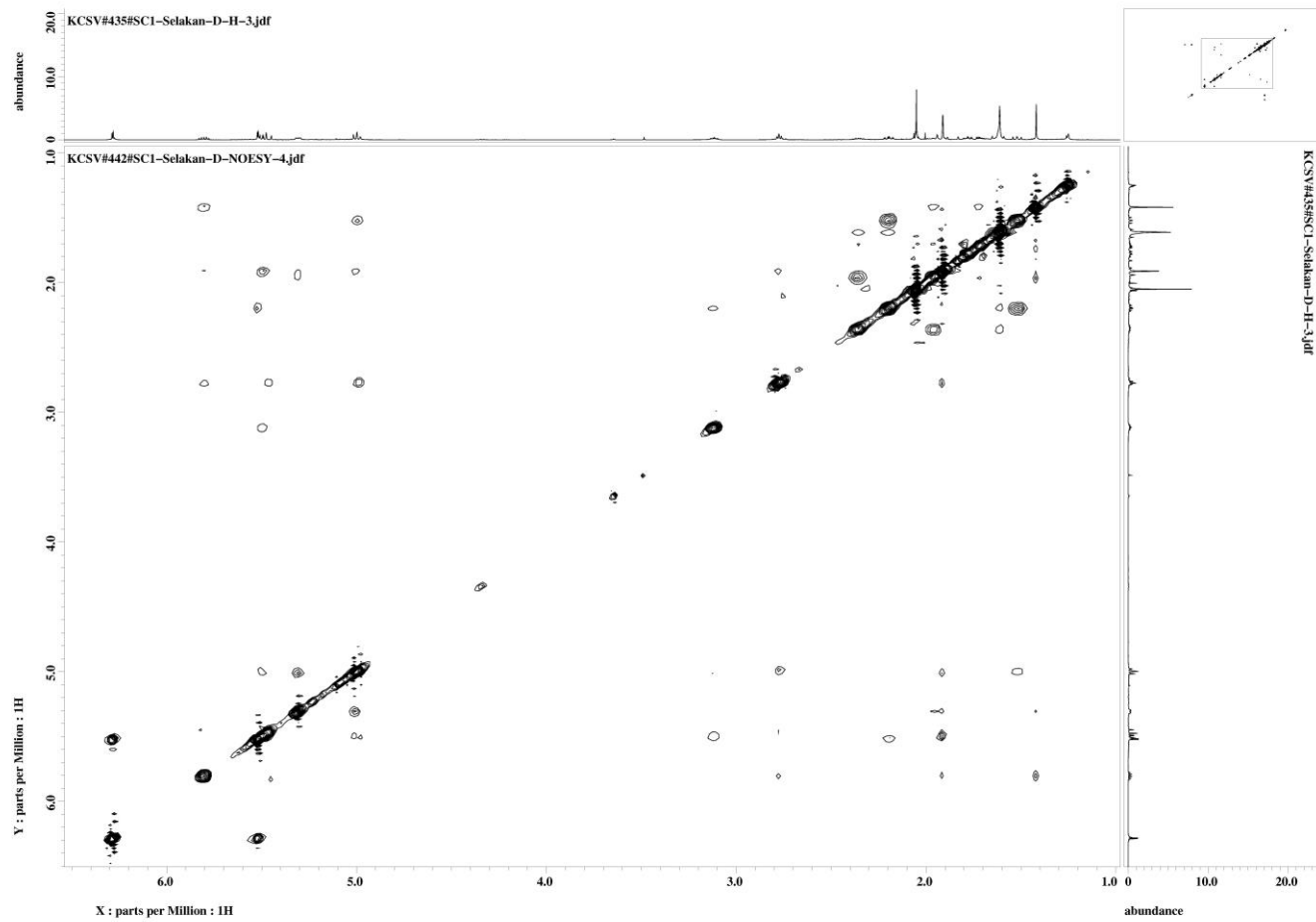


Figure S13. NOESY spectrum of **2** in  $\text{CDCl}_3$ .

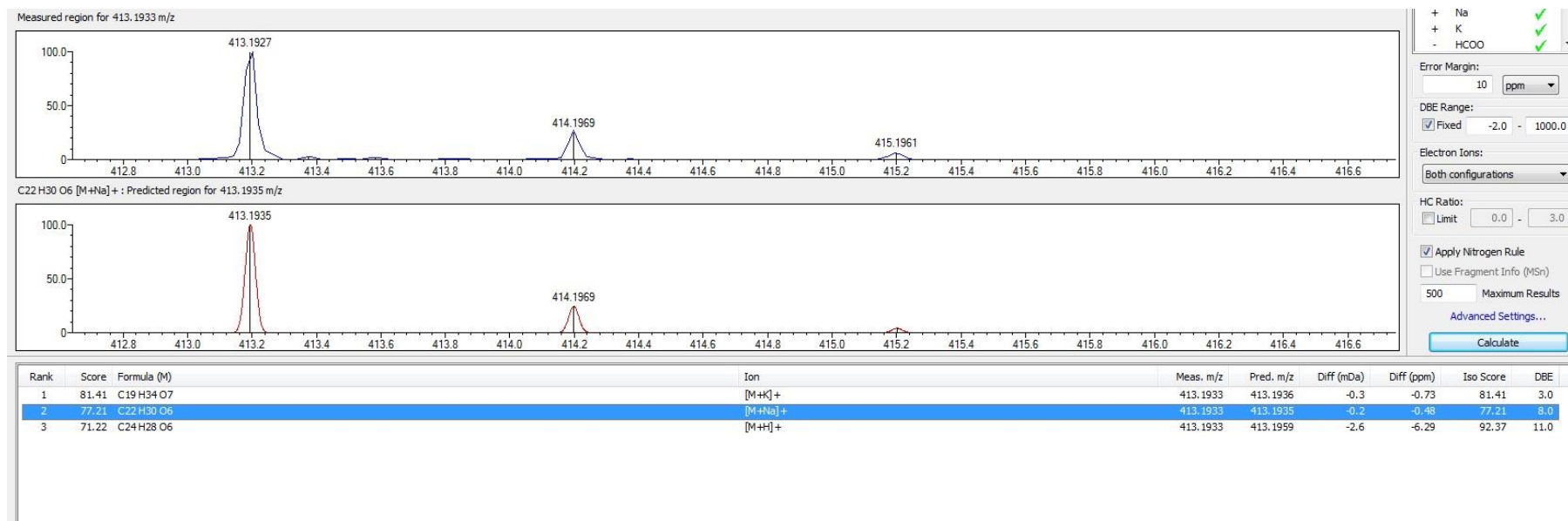


Figure S14. HRESI-MS data of 2.