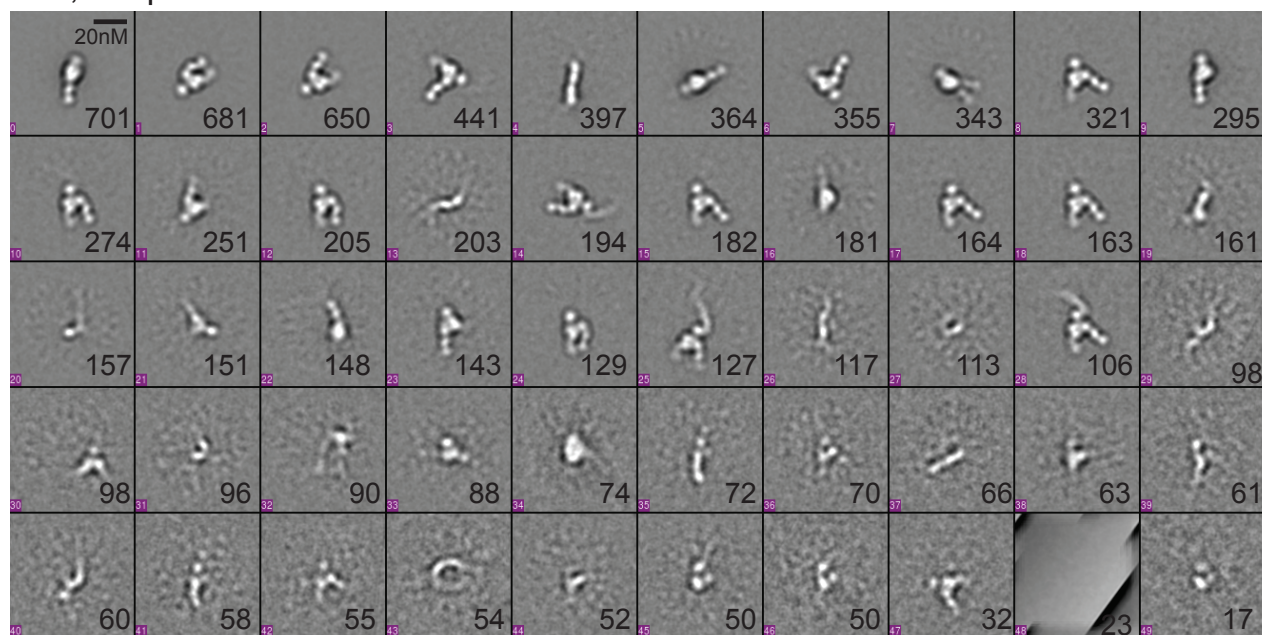


## 2D class averages

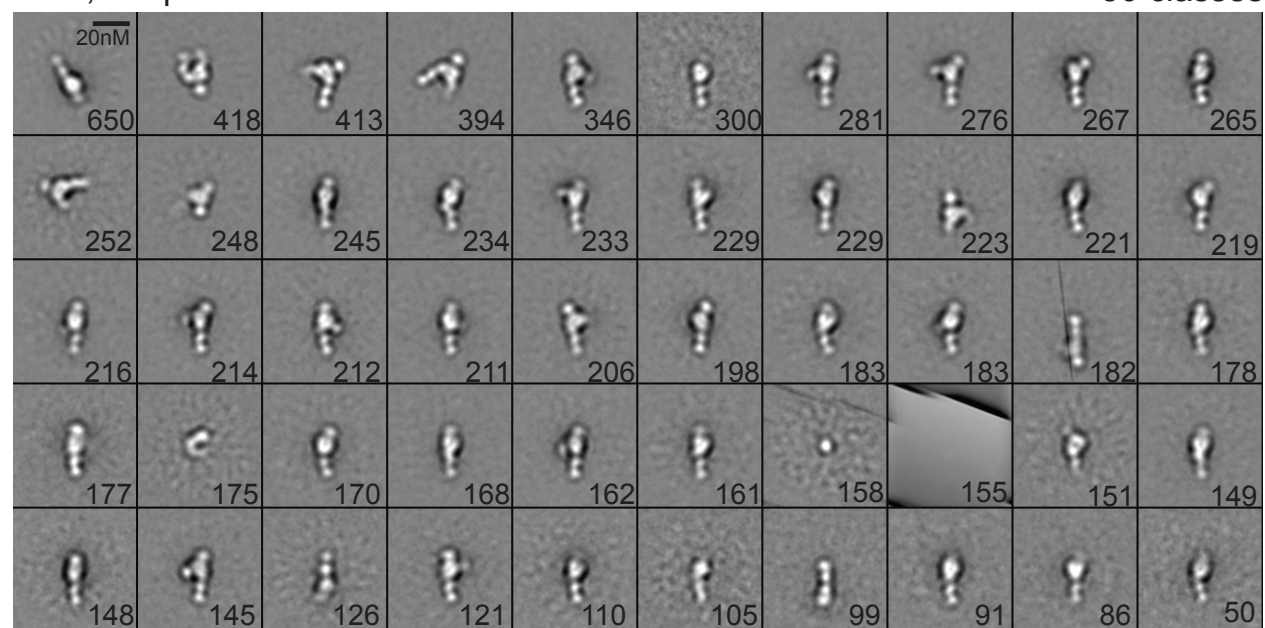
**A** 9,044 particles

50 classes



**B** 10,633 particles

50 classes



**Figure S1.** EM class averages of negatively stained (A) LFA-1 headpiece complexed with high affinity ICAM1-D1D5 in  $Mn^{2+}/Ca^{2+}$  and (B) LFA-1 headpiece in  $Mn^{2+}/Ca^{2+}$ .