

Supplementary Materials

Figure Legend

Fig. S1. Sub-mitochondrial localization of the Full Length (FL) and N-terminal deletion mutants of TbTim17 in Tim17 knockdown (KD) *T. brucei*. Mitochondria and mitoplast (swelled in hypotonic buffer to rupture the mitochondrial outer membrane) were isolated from the Tim17KD/FL-Tim17CE (A), Tim17KD/ Δ 20-Tim17CE (B), and Tim17KD/ Δ 30-Tim17CE (C) *T. brucei* grown for 96 h in the presence of doxycycline and treated with various concentrations (0-200 μ g/ml) of proteinase K as described in the materials and Methods. Proteins were analyzed by immunoblotting using anti-myc, -Tim17, -mHSP70, and -CPT antibodies. Arrow shows a ~19 kDa cleaved product of FL-Tim17.

Fig. S2. Alkali extraction of the mitochondria isolated from Tim17KD/FL-Tim17CE, Tim17KD/ Δ 20-Tim17CE, and Tim17KD/ Δ 30-Tim17CE *T. brucei* grown for 96 h in the presence of doxycycline. Proteins from equal volume of the supernatant (lane S) and pelleted (lane P) fractions were analyzed by immunoblotting using anti-myc, -Tim17, -TAO, and -mHSP70 antibodies.

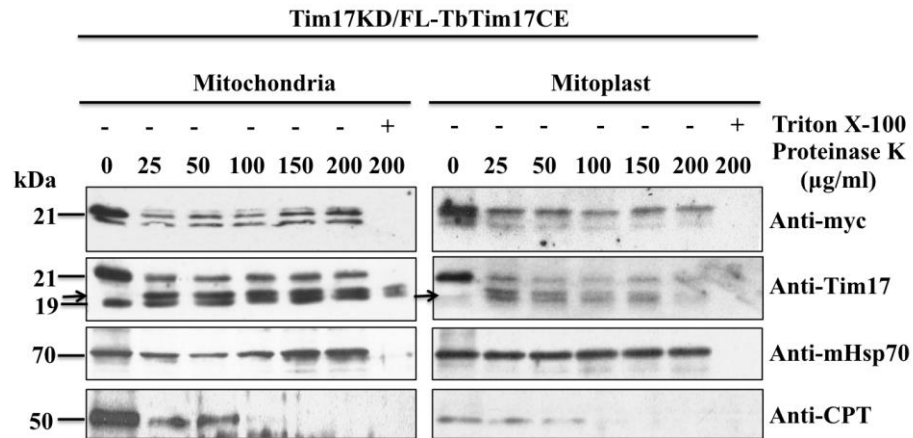
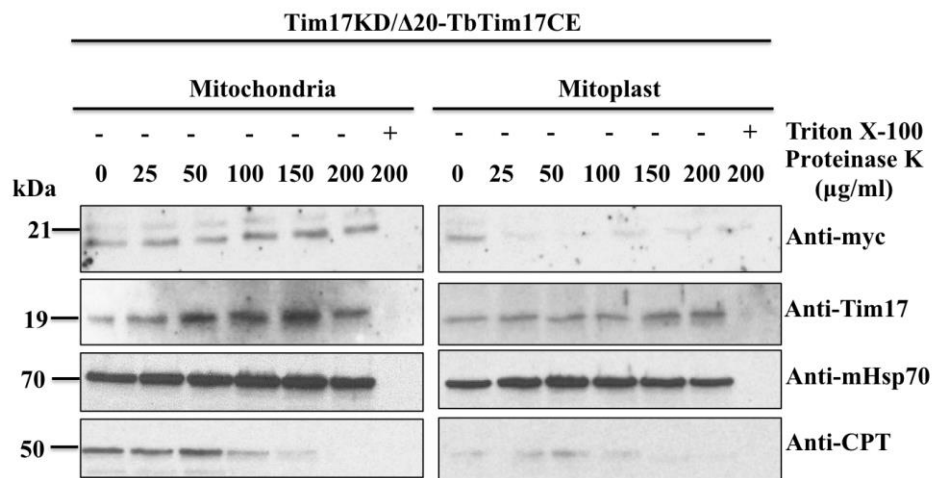
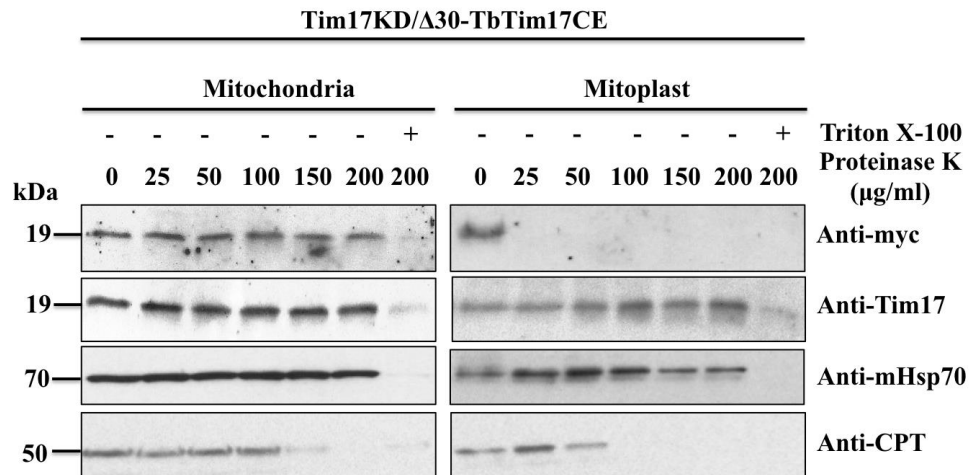
A**B****C**

Figure S1

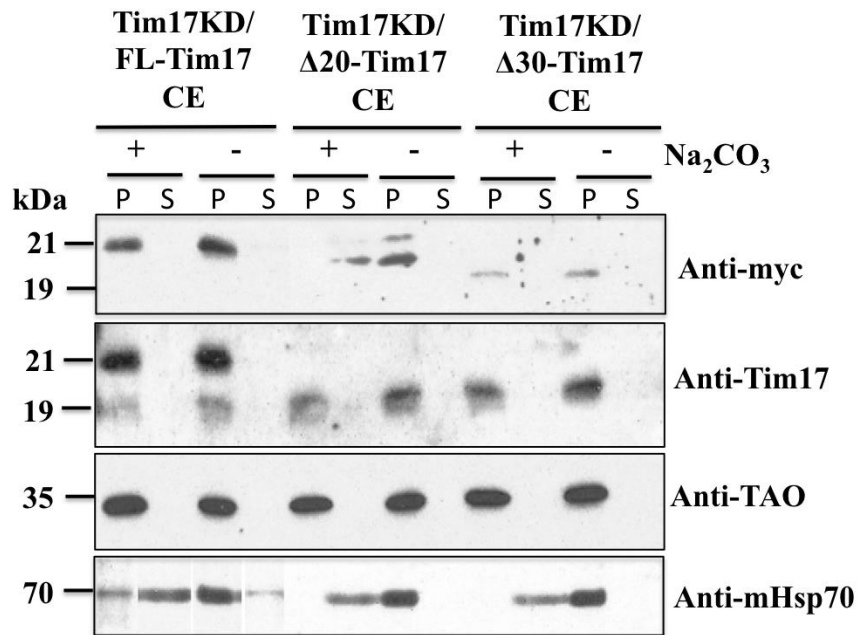


Figure S2