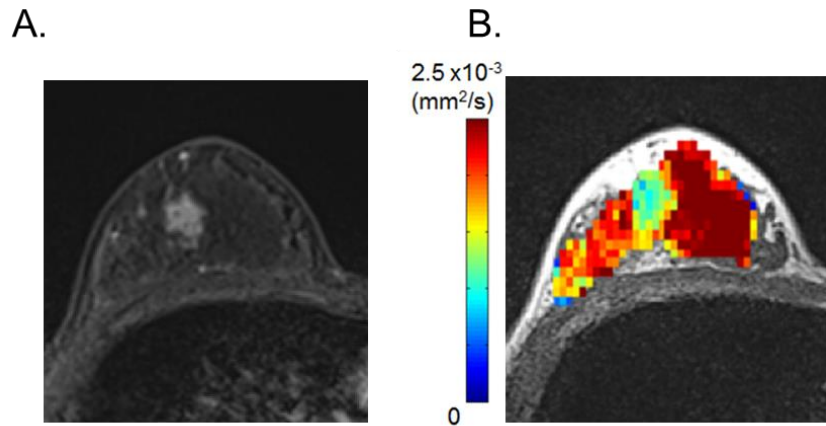


Appendix Figure



36-year-old woman in lactation with invasive ductal carcinoma.

A; contrast-enhanced (CE) image, B; ADC₀ map. The mass with low ADC₀ values (light blue) corresponds to the enhancing mass on CE image.

DWI has been acquired using 3T MRI scanner (MAGNETOM Trio, A Tim System, Siemens Healthcare, Erlangen, Germany) equipped with a dedicated 16-channel breast array coil, with the following parameters: b values [0, 5, 10, 20, 30, 50, 70, 100, 200, 400, 600, 800, 1000, 1500, 2000, 2500 sec/mm^2]; TR/TE 4600/86 ms, field of view $160 \times 300 \text{ mm}^2$, matrix 80×166 , slice thickness 3.0 mm, acquisition time 3 min 55 sec; GRAPPA with acceleration factor of 2.