

Supplemental Figure 1. (A) Ectropion and eclabion, (B) Microtia, Thoracic kyphosis (C) and joint contractions of the limbs (C and D) were also noted.

Toshifumi Nomura 2018/2/1 16:06

削除: Supplemental Methods

Toshifumi Nomura 2018/2/1 16:08

削除: -G

Toshifumi Nomura 2018/2/1 16:08

削除: The patient presented with diffusely erythematous skin with scales on the whole body, except for the palms (B).

Toshifumi Nomura 2018/2/1 16:08

削除: ,

Toshifumi Nomura 2018/2/1 16:08

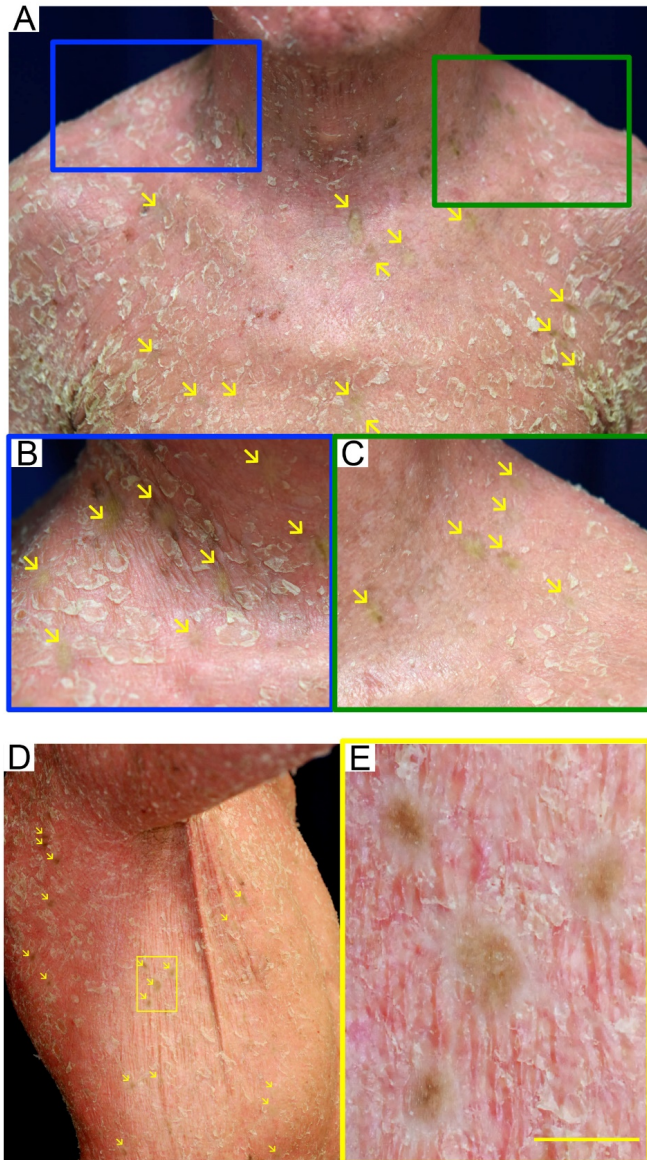
削除: m

Toshifumi Nomura 2018/2/1 16:09

削除: (E and F),

Toshifumi Nomura 2018/2/1 16:09

削除: and nipple hypoplasia (G)



Supplemental Figure 2. (A-C) Small, normal-appearing greenish, brownish, or whitish patches were noted on the trunk and neck. High-power views of the blue (B) and green (C) square areas are presented. (D and E) Similar skin spots were also noted on the right side of the trunk. A high-magnification image of the yellow square area (E). Scale bar = 10 mm. Arrows indicate revertant skin spots.