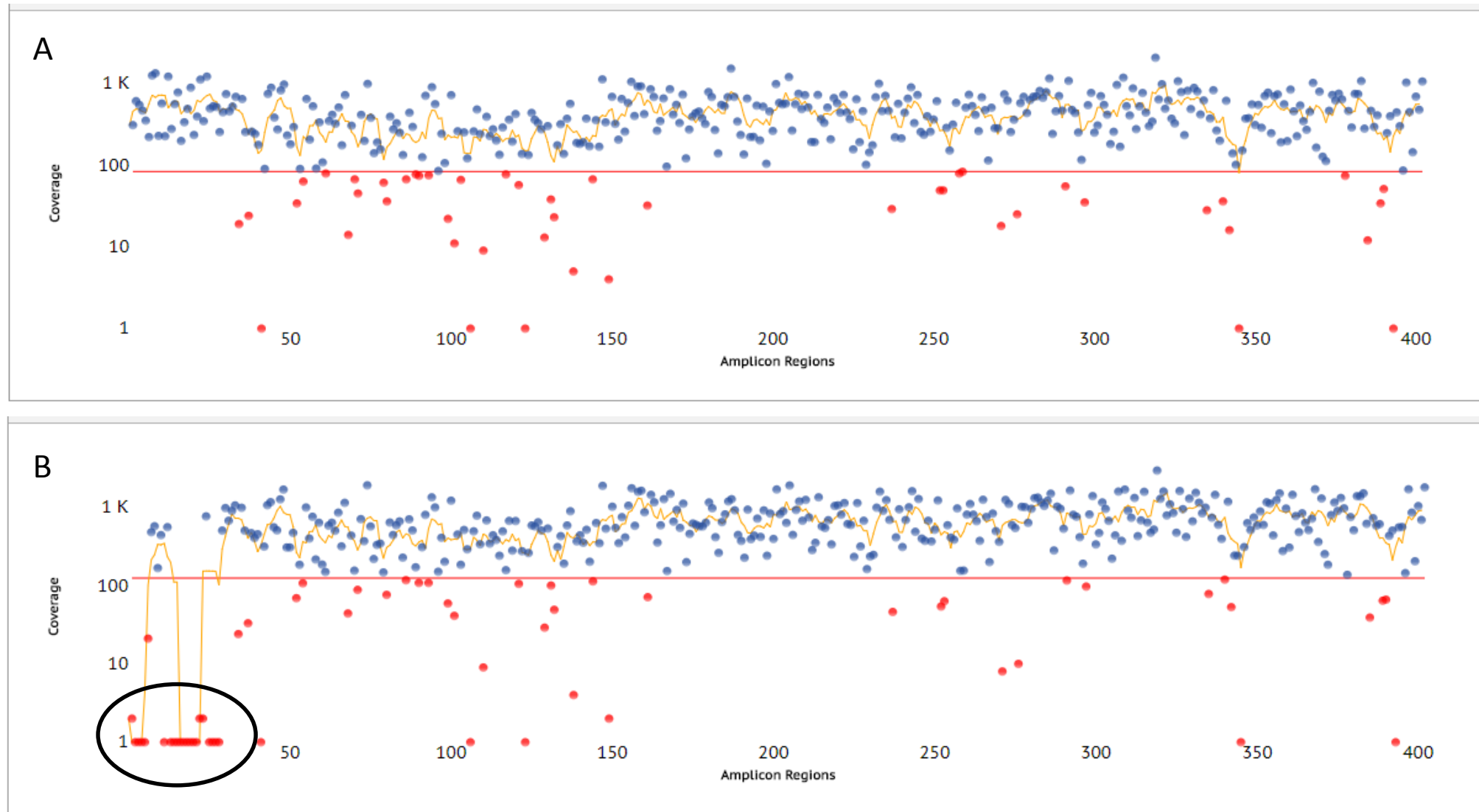


**Table S1: Tennessee Classification of HELLP syndrome**

HELLP Syndrome	Aspartate Aminotransferase or Alanine Aminotransferase $\geq 70$ IU/L
	Platelets $\leq 100,000$
	Lactate Dehydrogenase Level $\geq 600$ IU/L or 3x the upper limit of normal for lab reference range
Partial HELLP Syndrome	Meeting at least one criteria but not all



**Supplemental Figure 1: Analysis of amplicon coverage.** Two patient samples are shown, with each dot along the x-axis representing a unique amplicon (total 402). Coverage (reads) are on the y-axis, with blue dots above the arbitrary threshold of 100 and red dots below. A homozygous deletion of *CHFR1* and *CFHR3* is highlighted in sample B (black circle), with complete loss of amplicon coverage in the regions corresponding to those genes.