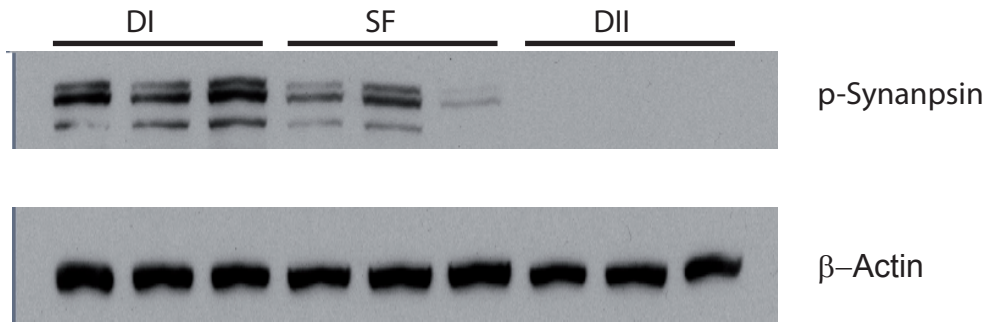
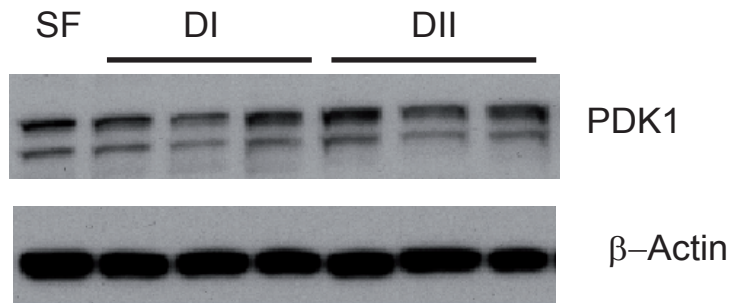


Supplementary Figure 1



Western blots (WBs) from three arbitrary samples from sham-mice group, fed with DI, DII or SF. WBs (25 ug/lane) were analysed with antibodies against pSynapsin (as presented in the manuscript, Figure 3) and β -actin as loading control



Western blot from three arbitrary samples from sham-mice group fed with DI, DII and one sample from SF. WBs (25 ug/lane) were analysed with antibodies against PDK1 and β -actin. Not appreciable differences were observed in both cases.