

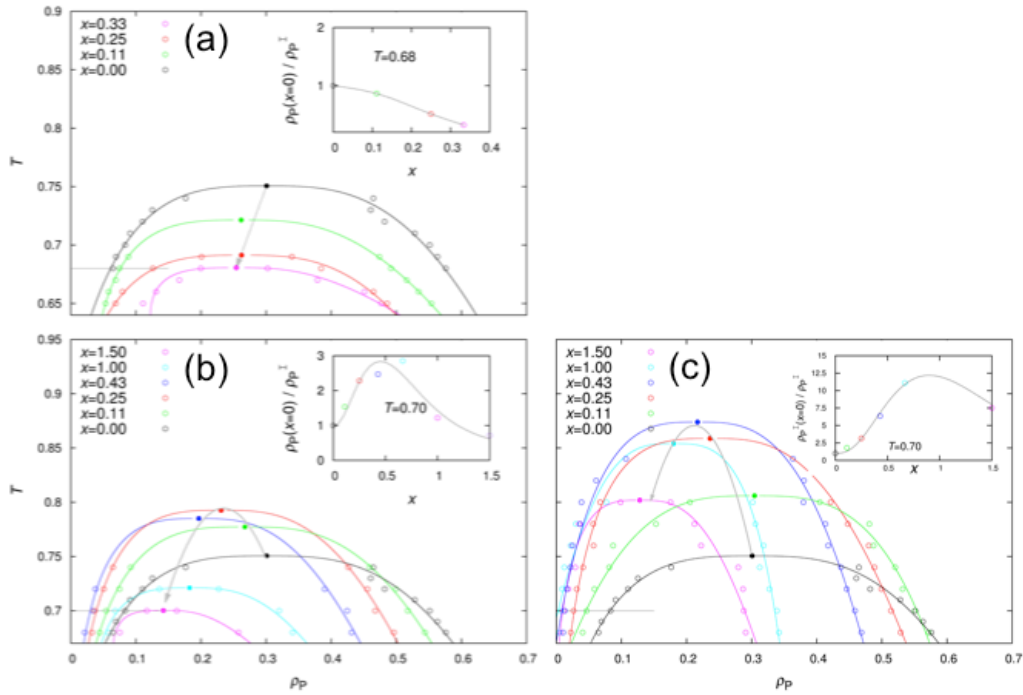
**Liquid-Liquid Phase Separation of Patchy Particles Illuminates
Diverse Effects of Regulatory Components on Protein Droplet
Formation**

Valery Nguemaha¹ and Huan-Xiang Zhou^{1,2,*}

¹Department of Physics and Institute of Molecular Biophysics, Florida State University, Tallahassee, FL 32306, United State

²Department of Chemistry and Department of Physics, University of Illinois at Chicago, Chicago, IL 60607, United States

Supplementary Information



Supplementary Figure S1. Phase diagrams. Results at $\epsilon_{PR} = 0.7, 1.25,$ and 1.5 are shown in (a) – (c), respectively. Open symbols are calculation results, and solid curves are fits to equation (7). The critical points from the fits are shown as filled symbols, with an arrowed gray line or parabola indicating the change with increasing X . A horizontal line through the left arm of the binodal indicates the temperature chosen for displaying results in the inset. Inset: ratio of threshold P concentrations between the pure P system and P-R mixture; a smooth curve is drawn to guide the eye.