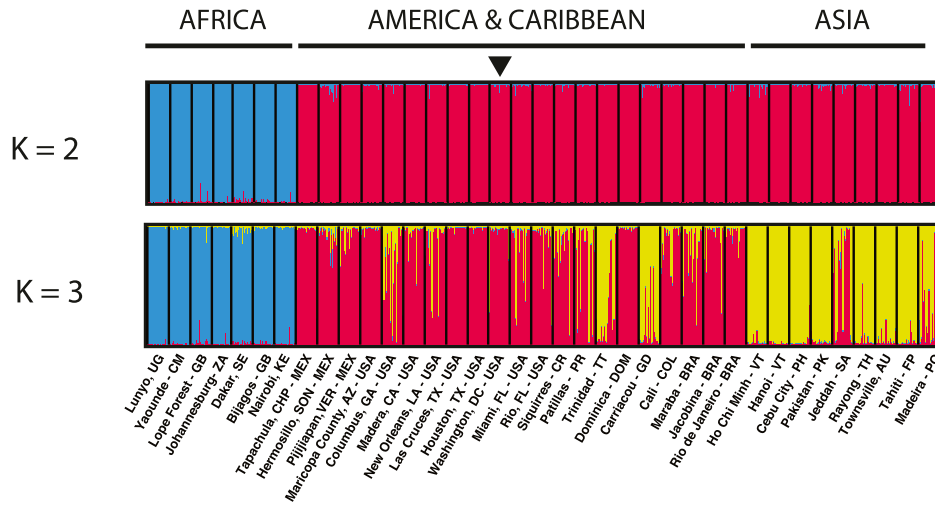
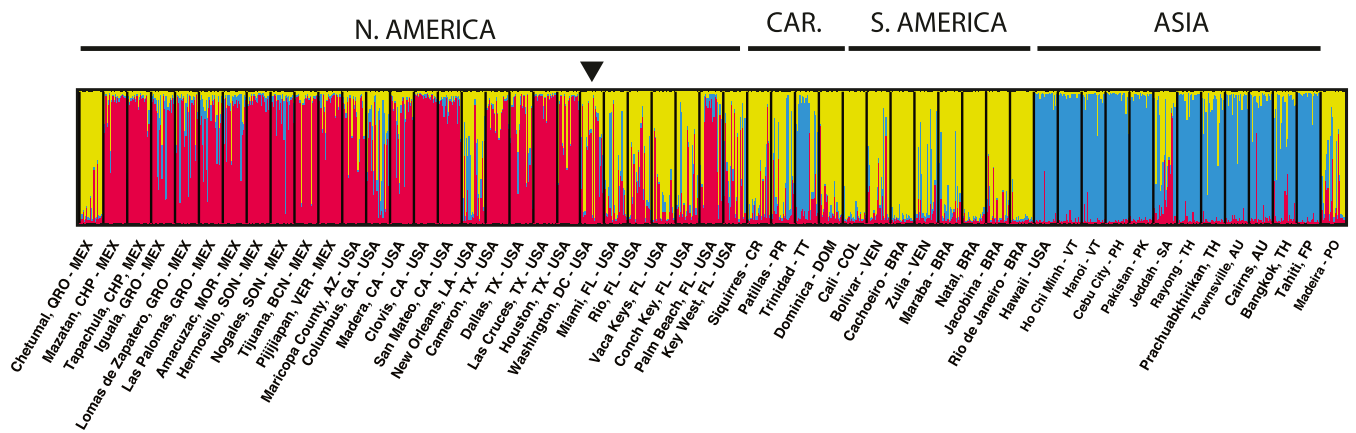


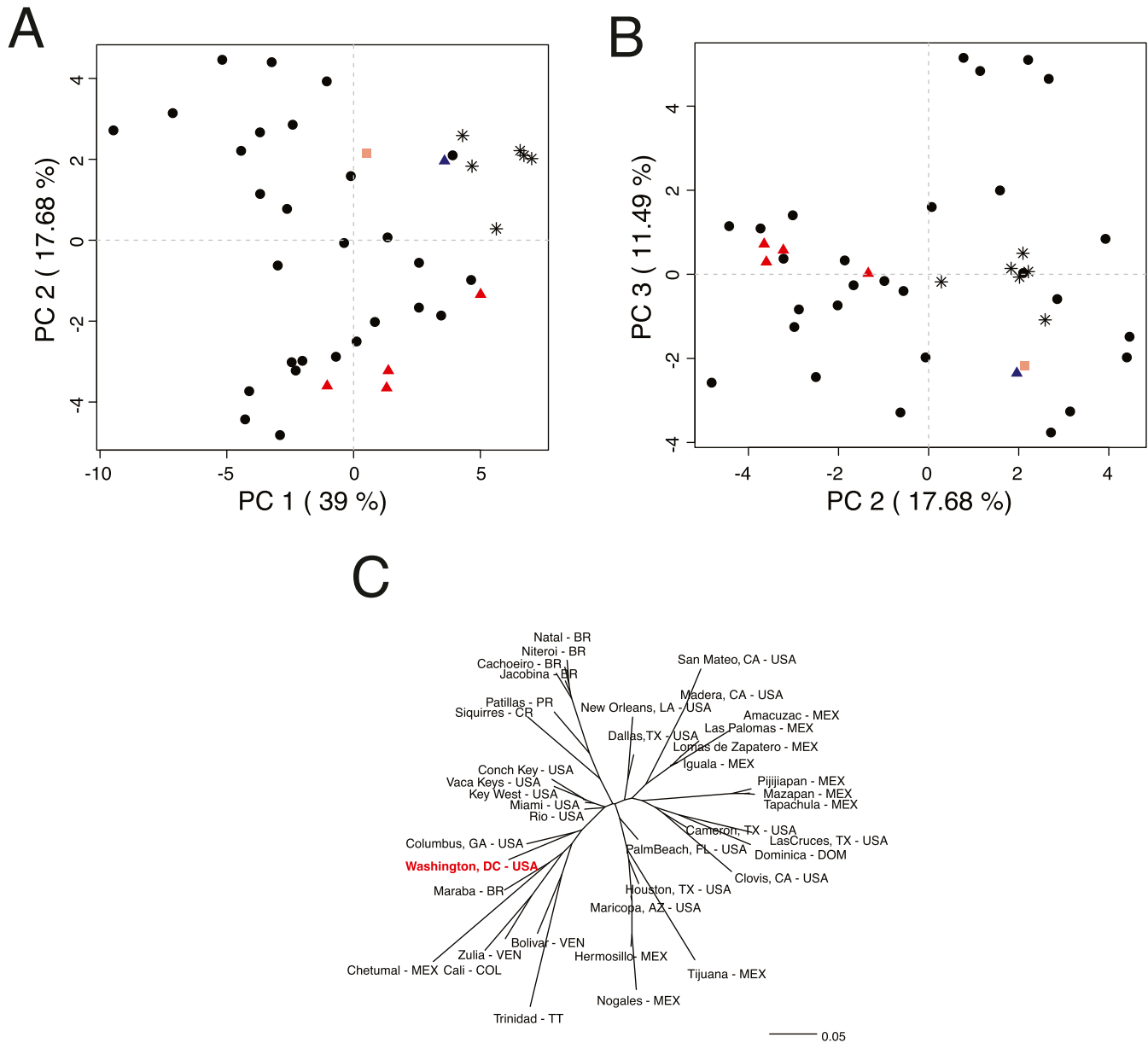
A) World



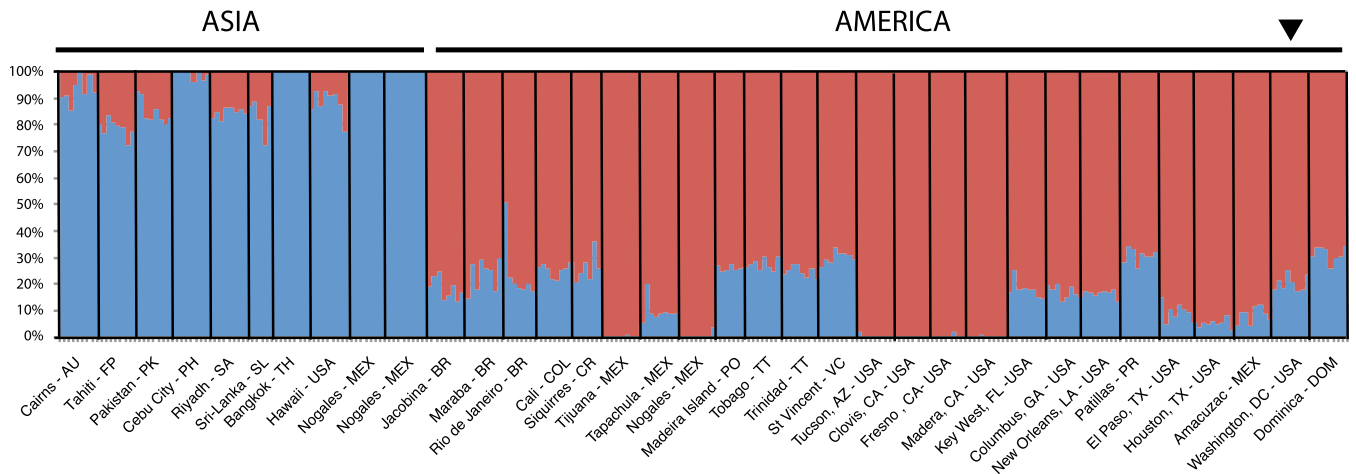
B) Out of Africa



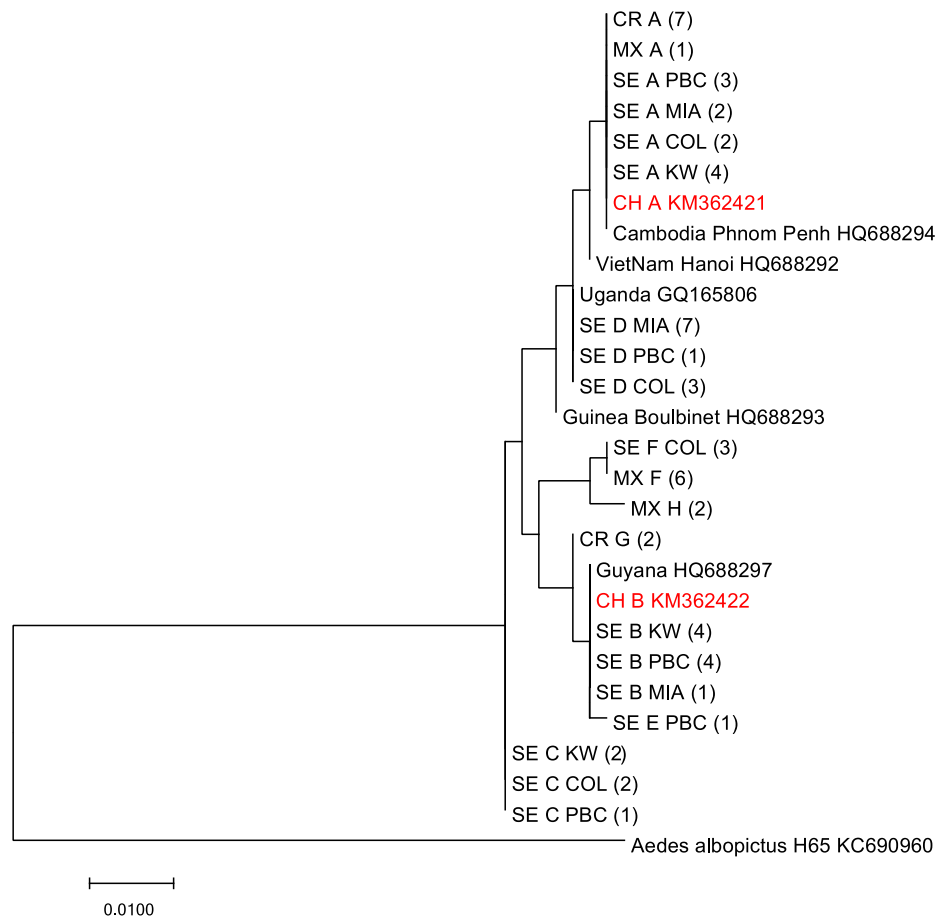
SUPPLEMENTAL FIGURE 1. Genetic structure of *Aedes aegypti* populations based on 12 microsatellite loci. Panel shows the STRUCTURE bar plot indicating relatedness among geographic locations. Each vertical bar represents an individual. The height of each bar represents the probability of assignment to each of K clusters (each cluster depicted by different colors). An arrow above the panel indicates the location of Washington, DC. (A) World populations at $K = 2$ and $K = 3$. (B) Outside Africa populations at $K = 3$. CAR = Caribbean.



SUPPLEMENTAL FIGURE 2. Genetic distance between Washington, DC, *Aedes aegypti* and American populations based on 12 microsatellite loci. **(A, B)** Principal component analysis on genetic distance³⁹ among 53 American and Caribbean collections (Table 1). Washington, DC, is indicated by a pink square, Columbus, GA by a blue triangle, Florida populations by stars, and Texas populations by red triangles. The percentage of variation explained by each of the principal components is indicated in parenthesis. **(C)** Neighbor joining tree based on the genetic distances used in a **(A)** and **(B)**.



SUPPLEMENTAL FIGURE 3. Genetic structure of *Aedes aegypti* populations around the world based on 14,071 SNPs. Panel shows the ADMIXTURE bar plot indicating relatedness among geographic regions. Each vertical bar represents an individual. The height of each bar represents the probability of assignment to each of $K = 2$ clusters (each cluster depicted by different colors). An arrow above the panel indicates the location of Washington, DC.



SUPPLEMENTAL FIGURE 4. Phylogenetic tree constructed with a consensus 497 bp of the mitochondrial cytochrome oxidase I gene sequence showing each regional haplotype with the number of individuals possessing the haplotype in parantheses (SE = southeastern United States; CR = Costa Rica; MX = Mexico; and CH = Capitol Hill area in Washington DC). The analysis included sequences from 5 various geographic regions obtained from GenBank and using an *Aedes albopictus* sequence as an outgroup.

SUPPLEMENTAL TABLE 1

Genetic diversity of *Aedes aegypti* collections from America and the Caribbean based on 12 microsatellite loci

Population	Region	H_o^*	H_e^\dagger	AR‡	PAR§
Maricopa County, AZ, USA	North America	0.554	0.557	3.98	0
Tijuana, BC, MEX	North America	0.625	0.550	2.92	0
Madera, CA, USA	North America	0.533	0.541	3.68	0
Clovis, CA, USA	North America	0.451	0.489	3.3	0
Houston, TX, USA	North America	0.439	0.416	3.08	0
Pijijiapan, CHP, MEX	North America	0.391	0.458	3.19	0
Cali, CO	South America	0.448	0.502	3.53	0.03
Bolivar, VEN	South America	0.523	0.547	3.9	0.04
Cachoeiro, BR	South America	0.463	0.495	3.59	0.01
Zulia, VEN	South America	0.550	0.532	3.76	0
Maraba, BR	South America	0.521	0.554	3.77	0.03
Natal, BR	South America	0.504	0.497	3.49	0.02
Miami, FL, USA	North America	0.674	0.631	4.76	0.08
Las Palomas, GRO, MEX	North America	0.560	0.573	3.62	0.01
Lomas de Zapatero, GRO, MEX	North America	0.560	0.553	3.74	0.05
Iguala, GRO, MEX	North America	0.573	0.565	3.81	0.03
Mazatan, CHP MEX	North America	0.511	0.474	3.16	0
Columbus, GA, USA	North America	0.645	0.636	4.51	0.07
Tapachula Norte, CHP, MEX	North America	0.502	0.499	3.42	0
Jacobina, BR	South America	0.425	0.453	3.47	0.06
San Mateo, CA, USA	North America	0.492	0.508	3.81	0
Hermosillo, SON, MEX	North America	0.541	0.561	3.95	0.03
Nogales, SON, MEX	North America	0.551	0.558	3.86	0.05
Chetumal, QRO, MEX	North America	0.535	0.493	3.53	0.06
Siquirres, CR	Central America	0.545	0.607	4.1	0.01
Rio de Janeiro, BR	South America	0.407	0.472	4.01	0.15
Rio, FL, USA	North America	0.609	0.627	4.52	0.01
Conch Key, FL, USA	North America	0.599	0.604	4.33	0.08
Palm Beach, FL, USA	North America	0.595	0.618	4.33	0
Patillas, PR	Caribbean	0.574	0.536	4.12	0
Trinidad, TT	Caribbean	0.472	0.532	4.01	0.01
Dominica, DM	Caribbean	0.432	0.454	3.29	0.08
Cameron, TX, USA	North America	0.489	0.489	3.89	0.06
Dallas, TX, USA	North America	0.551	0.562	4.44	0.07
Las Cruces, TX, USA	North America	0.534	0.523	3.8	0.16
Vaca Key, FL, USA	North America	0.592	0.604	4.4	0.02
North Key West, FL, USA	North America	0.648	0.625	4.5	0
New Orleans, LA, USA	North America	0.604	0.620	4.51	0
Amacuzac, MOR, MEX	North America	0.532	0.490	3.52	0.02
Washington, DC, USA	North America	0.493	0.548	3.73	0.06

* Observed heterozygosity.

† Corrected expected heterozygosity.

‡ Average allele richness across all 12 microsatellite loci estimated by rarefaction ($N = 38$ genes).§ Average private allele richness across all 12 microsatellite loci estimated by rarefaction ($N = 38$ genes).

SUPPLEMENTAL TABLE 2

Population assignment rankings of genetically assigning Washington, DC, individuals to the American reference database using 12 microsatellite loci

Assigned sample	Rank 1	Score %	Rank 2	Score %	Rank 3	Score %
DC14_70	Miami, FL	60.81	Key West, FL	22.508	Zulia, VEN	10.662
DC14_71	Patillas, PR	76.521	Cachoeiro, BR	11.983	Lomas de Zapatero, MEX	4.443
DC14_72	Maricopa, AZ	33.127	Columbus, GA	23.441	Chetumal, MEX	22.649
DC14_73	Palm Beach, FL	72.886	Conch Key, FL	7.824	Columbus, GA	6.29
DC14_74	Conch Key, FL	52.791	Palm Beach, FL	38.633	Miami, FL	4.348
DC14_75	Palm Beach, FL	55.803	Miami, FL	21.099	Key West, FL	10.699
DC14_76	Palm Beach, FL	65.169	Conch Key, FL	18.714	Vaca Key, FL	5.443
DC14_78	Key West, FL	40.261	Lomas de Zapatero, MEX	26.976	Miami, FL	21.382
DC14_79	Columbus, GA	84.619	Maricopa, AZ	7.472	Dallas, TX	5.466
DC14_80	Zulia, VEN	63.733	Miami, FL	26.725	Key West, FL	6.841
DC14_81	Palm Beach, FL	77.02	Conch Key, FL	14.332	Houston, TX	2.721
DC14_82	Rio, FL	44.323	Zulia, VEN	30.716	Clovis, CA	8.311
DC14_83	Columbus, GA	50.549	Rio, FL	38.6	Zulia, VEN	4.252
DC14_84	Conch Key, FL	66.533	Miami, FL	9.196	Cali, CO	7.169
DC14_85	Clovis, CA	42.237	Las Palomas, MEX	18.949	Lomas de Zapatero, MEX	18.564
DC14_86	Dallas, TX	73.311	Columbus, GA	7.145	Las Palomas, MEX	4.452
DC14_87	Conch Key, FL	72.543	Miami, FL	8.304	Vaca Key, FL	6.949
DC14_88	Conch Key, FL	94.848	Palm Beach, FL	1.669	Maricopa, AZ	1.289
DC14_89	Maricopa, AZ	40.059	Dallas, TX	30.606	Columbus, GA	20.975
DC14_90	Palm Beach, FL	56.855	New Orleans, LA	11.374	Rio, FL	10.398
DC14_91	Zulia, VEN	45.138	Rio, FL	17.527	Dallas, TX	10.988
DC14_92	Columbus, GA	55.064	Rio, FL	14.436	Maricopa, AZ	9.614
DC14_93	Siquirres, CR	60.402	New Orleans, LA	12.781	Palm Beach, FL	6.282
DC14_94	Palm Beach, FL	75.873	Rio, FL	7.076	Key West, FL	6.45
DC14_95	Palm Beach, FL	72.899	Columbus, GA	10.636	Dallas, TX	3.564
DC14_97	Maricopa, AZ	40.996	Palm Beach, FL	21.198	Rio, FL	14.137
DC14_98	Palm Beach, FL	57.577	Zulia, VEN	34.554	Key West, FL	4.929

SUPPLEMENTAL TABLE 3
Population assignment rankings of genetically assigning Washington, DC, individuals to the American reference database using sets of 4,000 random SNPs.

Assigned sample	Rank 1	Score %	Rank 2	Score %	Rank 3	Score %	Rank 4	Score %	Rank 5	Score %
RUN1										
Wash_DC.CH.70	Key_west_Florida_USA	100	Columbus_Georgia_USA	0	Squirres_CR	0	Patillas_USA_PR	0	Amacuzac_MEX	0
Wash_DC.CH.95	Key_west_Florida_USA	100	Columbus_Georgia_USA	0	Squirres_CR	0	El_Paso_Texas_USA	0	Patillas_USA_PR	0
Wash_DC.CH.79	Key_west_Florida_USA	100	Patillas_USA_PR	0	Squirres_CR	0	Columbus_Georgia_USA	0	New_Orleans_Louisiana_USA	0
Wash_DC.CH.97	Key_west_Florida_USA	100	Columbus_Georgia_USA	0	Squirres_CR	0	El_Paso_Texas_USA	0	Patillas_USA_PR	0
Wash_DC.CH.98	Key_west_Florida_USA	100	Columbus_Georgia_USA	0	Squirres_CR	0	Patillas_USA_PR	0	New_Orleans_Louisiana_USA	0
Wash_DC.CH.87	Key_west_Florida_USA	100	Patillas_USA_PR	0	New_Orleans_Louisiana_USA	0	Squirres_CR	0	Columbus_Georgia_USA	0
Wash_DC.DC14_70	Key_west_Florida_USA	100	Columbus_Georgia_USA	0	Squirres_CR	0	Patillas_USA_PR	0	Amacuzac_MEX	0
Wash_DC.CH.92	Key_west_Florida_USA	100	Squirres_CR	0	Columbus_Georgia_USA	0	Patillas_USA_PR	0	El_Paso_Texas_USA	0
Wash_DC.CH.92	Squirres_CR	100	Key_west_Florida_USA	0	Columbus_Georgia_USA	0	El_Paso_Texas_USA	0	Patillas_USA_PR	0
Wash_DC.CH.93	Squirres_CR	100	Columbus_Georgia_USA	0	El_Paso_Texas_USA	0	Squirres_CR	0	New_Orleans_Louisiana_USA	0
Wash_DC.CH.94	Key_west_Florida_USA	100	Columbus_Georgia_USA	0	El_Paso_Texas_USA	0	Squirres_CR	0	Patillas_USA_PR	0
Wash_DC.DC14_71	Key_west_Florida_USA	100	Columbus_Georgia_USA	0	Squirres_CR	0	New_Orleans_Louisiana_USA	0	Patillas_USA_PR	0
Wash_DC.DC14_73	Key_west_Florida_USA	100	Patillas_USA_PR	0	Squirres_CR	0	New_Orleans_Louisiana_USA	0	Columbus_Georgia_USA	0
Wash_DC.DC14_75	Columbus_Georgia_USA	100	Key_west_Florida_USA	0	El_Paso_Texas_USA	0	Squirres_CR	0	New_Orleans_Louisiana_USA	0
Wash_DC.DC14_82	Key_west_Florida_USA	100	Columbus_Georgia_USA	0	Squirres_CR	0	Patillas_USA_PR	0	El_Paso_Texas_USA	0
Wash_DC.DC14_83	Columbus_Georgia_USA	100	Key_west_Florida_USA	0	El_Paso_Texas_USA	0	Squirres_CR	0	New_Orleans_Louisiana_USA	0
Wash_DC.DC14_84	Key_west_Florida_USA	100	Patillas_USA_PR	0	Squirres_CR	0	Columbus_Georgia_USA	0	El_Paso_Texas_USA	0
RUN2										
Wash_DC.CH.70	Columbus_Georgia_USA	52.705	Key_west_Florida_USA	47.295	Patillas_USA_PR	0	Squirres_CR	0	Amacuzac_MEX	0
Wash_DC.CH.95	Columbus_Georgia_USA	100	Key_west_Florida_USA	0	Squirres_CR	0	El_Paso_Texas_USA	0	New_Orleans_Louisiana_USA	0
Wash_DC.CH.79	Key_west_Florida_USA	100	New_Orleans_Louisiana_USA	0	Squirres_CR	0	Columbus_Georgia_USA	0	Patillas_USA_PR	0
Wash_DC.CH.97	Key_west_Florida_USA	100	Columbus_Georgia_USA	0	Squirres_CR	0	El_Paso_Texas_USA	0	New_Orleans_Louisiana_USA	0
Wash_DC.CH.98	Key_west_Florida_USA	100	Columbus_Georgia_USA	0	Patillas_USA_PR	0	New_Orleans_Louisiana_USA	0	Squirres_CR	0
Wash_DC.CH.87	Key_west_Florida_USA	100	Columbus_Georgia_USA	0	Squirres_CR	0	Patillas_USA_PR	0	El_Paso_Texas_USA	0
Wash_DC.DC14_70	Key_west_Florida_USA	100	Columbus_Georgia_USA	0	Amacuzac_MEX	0	Patillas_USA_PR	0	Squirres_CR	0
Wash_DC.CH.92	Key_west_Florida_USA	100	Columbus_Georgia_USA	0	El_Paso_Texas_USA	0	New_Orleans_Louisiana_USA	0	Patillas_USA_PR	0
Wash_DC.CH.93	Squirres_CR	100	Columbus_Georgia_USA	0	Key_west_Florida_USA	0	New_Orleans_Louisiana_USA	0	New_Orleans_Louisiana_USA	0
Wash_DC.CH.94	Columbus_Georgia_USA	100	Key_west_Florida_USA	0	El_Paso_Texas_USA	0	Squirres_CR	0	New_Orleans_Louisiana_USA	0
Wash_DC.DC14_71	Key_west_Florida_USA	100	Columbus_Georgia_USA	0	New_Orleans_Louisiana_USA	0	Squirres_CR	0	Patillas_USA_PR	0
Wash_DC.DC14_73	Key_west_Florida_USA	100	Squirres_CR	0	Columbus_Georgia_USA	0	Patillas_USA_PR	0	El_Paso_Texas_USA	0
Wash_DC.DC14_75	Columbus_Georgia_USA	100	Key_west_Florida_USA	0	Squirres_CR	0	El_Paso_Texas_USA	0	New_Orleans_Louisiana_USA	0
Wash_DC.DC14_82	Key_west_Florida_USA	100	Columbus_Georgia_USA	0	Patillas_USA_PR	0	New_Orleans_Louisiana_USA	0	Squirres_CR	0
Wash_DC.DC14_83	Columbus_Georgia_USA	100	Key_west_Florida_USA	0	El_Paso_Texas_USA	0	New_Orleans_Louisiana_USA	0	Squirres_CR	0
Wash_DC.DC14_84	Key_west_Florida_USA	100	Columbus_Georgia_USA	0	Patillas_USA_PR	0	Squirres_CR	0	El_Paso_Texas_USA	0
RUN3										
Wash_DC.CH.70	Key_west_Florida_USA	100	Columbus_Georgia_USA	0	Amacuzac_MEX	0	Patillas_USA_PR	0	Squirres_CR	0
Wash_DC.CH.95	Key_west_Florida_USA	100	Columbus_Georgia_USA	0	Squirres_CR	0	El_Paso_Texas_USA	0	New_Orleans_Louisiana_USA	0
Wash_DC.CH.79	Key_west_Florida_USA	100	Patillas_USA_PR	0	Squirres_CR	0	Columbus_Georgia_USA	0	New_Orleans_Louisiana_USA	0
Wash_DC.CH.97	Key_west_Florida_USA	100	Columbus_Georgia_USA	0	Squirres_CR	0	El_Paso_Texas_USA	0	New_Orleans_Louisiana_USA	0
Wash_DC.CH.98	Key_west_Florida_USA	100	Columbus_Georgia_USA	0	Squirres_CR	0	Squirres_CR	0	New_Orleans_Louisiana_USA	0
Wash_DC.CH.87	Key_west_Florida_USA	100	Patillas_USA_PR	0	Columbus_Georgia_USA	0	Squirres_CR	0	New_Orleans_Louisiana_USA	0
Wash_DC.DC14_70	Key_west_Florida_USA	100	Columbus_Georgia_USA	0	Amacuzac_MEX	0	Patillas_USA_PR	0	Squirres_CR	0
Wash_DC.CH.92	Key_west_Florida_USA	100	Columbus_Georgia_USA	0	Squirres_CR	0	Patillas_USA_PR	0	New_Orleans_Louisiana_USA	0
Wash_DC.CH.93	Squirres_CR	98.661	Columbus_Georgia_USA	1.339	Key_west_Florida_USA	0	Patillas_USA_PR	0	El_Paso_Texas_USA	0
Wash_DC.CH.94	Key_west_Florida_USA	100	Columbus_Georgia_USA	0	El_Paso_Texas_USA	0	Patillas_USA_PR	0	Squirres_CR	0
Wash_DC.DC14_71	Key_west_Florida_USA	100	Columbus_Georgia_USA	0	Patillas_USA_PR	0	Squirres_CR	0	New_Orleans_Louisiana_USA	0
Wash_DC.DC14_73	Key_west_Florida_USA	100	Patillas_USA_PR	0	Squirres_CR	0	Squirres_CR	0	New_Orleans_Louisiana_USA	0
Wash_DC.DC14_75	Key_west_Florida_USA	99.546	Columbus_Georgia_USA	0.454	Squirres_CR	0	New_Orleans_Louisiana_USA	0	El_Paso_Texas_USA	0
Wash_DC.DC14_82	Key_west_Florida_USA	100	Columbus_Georgia_USA	0	Squirres_CR	0	Patillas_USA_PR	0	New_Orleans_Louisiana_USA	0
Wash_DC.DC14_83	Columbus_Georgia_USA	100	Key_west_Florida_USA	0	Squirres_CR	0	El_Paso_Texas_USA	0	New_Orleans_Louisiana_USA	0
Wash_DC.DC14_84	Key_west_Florida_USA	100	Patillas_USA_PR	0	Columbus_Georgia_USA	0	Squirres_CR	0	El_Paso_Texas_USA	0
RUN4										
Wash_DC.CH.70	Key_west_Florida_USA	100	Columbus_Georgia_USA	0	Squirres_CR	0	Patillas_USA_PR	0	Amacuzac_MEX	0
Wash_DC.CH.95	Key_west_Florida_USA	100	Columbus_Georgia_USA	0	El_Paso_Texas_USA	0	Squirres_CR	0	Patillas_USA_PR	0
Wash_DC.CH.79	Key_west_Florida_USA	100	Squirres_CR	0	Patillas_USA_PR	0	Columbus_Georgia_USA	0	New_Orleans_Louisiana_USA	0
Wash_DC.CH.97	Key_west_Florida_USA	100	Squirres_CR	0	Patillas_USA_PR	0	Columbus_Georgia_USA	0	New_Orleans_Louisiana_USA	0
Wash_DC.CH.98	Key_west_Florida_USA	100	Squirres_CR	0	Patillas_USA_PR	0	Columbus_Georgia_USA	0	El_Paso_Texas_USA	0
Wash_DC.CH.87	Key_west_Florida_USA	100	Squirres_CR	0	Patillas_USA_PR	0	Columbus_Georgia_USA	0	Amacuzac_MEX	0
Wash_DC.DC14_70	Key_west_Florida_USA	100	Squirres_CR	0	Patillas_USA_PR	0	Columbus_Georgia_USA	0	New_Orleans_Louisiana_USA	0
Wash_DC.CH.92	Key_west_Florida_USA	100	Squirres_CR	0	Patillas_USA_PR	0	Columbus_Georgia_USA	0	Amacuzac_MEX	0
Wash_DC.CH.93	Squirres_CR	99.991	Key_west_Florida_USA	0.009	Squirres_CR	0	Patillas_USA_PR	0	Amacuzac_MEX	0
Wash_DC.CH.94	Key_west_Florida_USA	100	Columbus_Georgia_USA	0	El_Paso_Texas_USA	0	Patillas_USA_PR	0	Patillas_USA_PR	0
Wash_DC.DC14_71	Key_west_Florida_USA	100	Squirres_CR	0	Patillas_USA_PR	0	Columbus_Georgia_USA	0	New_Orleans_Louisiana_USA	0
Wash_DC.DC14_73	Key_west_Florida_USA	100	Squirres_CR	0	Patillas_USA_PR	0	Columbus_Georgia_USA	0	New_Orleans_Louisiana_USA	0
Wash_DC.DC14_75	Key_west_Florida_USA	100	Columbus_Georgia_USA	0	Squirres_CR	0	El_Paso_Texas_USA	0	Patillas_USA_PR	0

(continued)

SUPPLEMENTAL TABLE 3
Continued

Assigned sample	Rank 1	Score %	Rank 2	Score %	Rank 3	Score %	Rank 4	Score %	Rank 5	Score %
Wash_DC_DC14_82	Key_west_Florida_USA	100	Squirres_CR	0	Columbus_Georgia_USA	0	El_Paso_Texas_USA	0	Patillas_USA_PR	0
Wash_DC_DC14_83	Key_west_Florida_USA	60.985	Columbus_Georgia_USA	39.005	Squirres_CR	0	El_Paso_Texas_USA	0	New_Orleans_Louisiana_USA	0
Wash_DC_DC14_84	Key_west_Florida_USA	100	Squirres_CR	0	Patillas_USA_PR	0	Columbus_Georgia_USA	0	El_Paso_Texas_USA	0
RUN5										
Wash_DC_CH_70	Key_west_Florida_USA	99.989	Columbus_Georgia_USA	0.001	Patillas_USA_PR	0	Squirres_CR	0	Dominica_DOM	0
Wash_DC_CH_95	Key_west_Florida_USA	100	Columbus_Georgia_USA	0	Squirres_CR	0	El_Paso_Texas_USA	0	New_Orleans_Louisiana_USA	0
Wash_DC_CH_79	Key_west_Florida_USA	100	Squirres_CR	0	Patillas_USA_PR	0	New_Orleans_Louisiana_USA	0	Columbus_Georgia_USA	0
Wash_DC_CH_97	Key_west_Florida_USA	100	Columbus_Georgia_USA	0	Squirres_CR	0	El_Paso_Texas_USA	0	Patillas_USA_PR	0
Wash_DC_CH_98	Key_west_Florida_USA	100	Columbus_Georgia_USA	0	Squirres_CR	0	Patillas_USA_PR	0	El_Paso_Texas_USA	0
Wash_DC_CH_87	Key_west_Florida_USA	100	Columbus_Georgia_USA	0	Squirres_CR	0	Patillas_USA_PR	0	New_Orleans_Louisiana_USA	0
Wash_DC_DC14_70	Key_west_Florida_USA	100	Columbus_Georgia_USA	0	Squirres_CR	0	Patillas_USA_PR	0	Amacuzac_MEX	0
Wash_DC_CH_92	Key_west_Florida_USA	100	Squirres_CR	0	Columbus_Georgia_USA	0	El_Paso_Texas_USA	0	Patillas_USA_PR	0
Wash_DC_CH_93	Squirres_CR	100	Key_west_Florida_USA	0	Patillas_USA_PR	0	Patillas_USA_PR	0	El_Paso_Texas_USA	0
Wash_DC_CH_94	Key_west_Florida_USA	100	Columbus_Georgia_USA	0	El_Paso_Texas_USA	0	Patillas_USA_PR	0	Amacuzac_MEX	0
Wash_DC_DC14_71	Key_west_Florida_USA	100	Squirres_CR	0	Patillas_USA_PR	0	Columbus_Georgia_USA	0	New_Orleans_Louisiana_USA	0
Wash_DC_DC14_73	Key_west_Florida_USA	100	Squirres_CR	0	Patillas_USA_PR	0	Columbus_Georgia_USA	0	New_Orleans_Louisiana_USA	0
Wash_DC_DC14_75	Columbus_Georgia_USA	100	Key_west_Florida_USA	0	Squirres_CR	0	El_Paso_Texas_USA	0	Patillas_USA_PR	0
Wash_DC_DC14_82	Key_west_Florida_USA	100	Columbus_Georgia_USA	0	Squirres_CR	0	New_Orleans_Louisiana_USA	0	Patillas_USA_PR	0
Wash_DC_DC14_83	Columbus_Georgia_USA	100	Key_west_Florida_USA	0	Squirres_CR	0	Squirres_CR	0	El_Paso_Texas_USA	0
Wash_DC_DC14_84	Key_west_Florida_USA	100	Squirres_CR	0	Columbus_Georgia_USA	0	Patillas_USA_PR	0	El_Paso_Texas_USA	0
RUN6										
Wash_DC_CH_70	Key_west_Florida_USA	100	Columbus_Georgia_USA	0	Squirres_CR	0	Patillas_USA_PR	0	New_Orleans_Louisiana_USA	0
Wash_DC_CH_95	Key_west_Florida_USA	100	Columbus_Georgia_USA	0	Squirres_CR	0	El_Paso_Texas_USA	0	New_Orleans_Louisiana_USA	0
Wash_DC_CH_79	Key_west_Florida_USA	100	Squirres_CR	0	Columbus_Georgia_USA	0	Patillas_USA_PR	0	New_Orleans_Louisiana_USA	0
Wash_DC_CH_97	Key_west_Florida_USA	99.941	Squirres_CR	0.059	Columbus_Georgia_USA	0	El_Paso_Texas_USA	0	Patillas_USA_PR	0
Wash_DC_CH_98	Key_west_Florida_USA	100	Squirres_CR	0	Columbus_Georgia_USA	0	Patillas_USA_PR	0	El_Paso_Texas_USA	0
Wash_DC_CH_87	Key_west_Florida_USA	100	Squirres_CR	0	Columbus_Georgia_USA	0	Patillas_USA_PR	0	New_Orleans_Louisiana_USA	0
Wash_DC_DC14_70	Key_west_Florida_USA	100	Columbus_Georgia_USA	0	Squirres_CR	0	Patillas_USA_PR	0	New_Orleans_Louisiana_USA	0
Wash_DC_CH_92	Key_west_Florida_USA	100	Columbus_Georgia_USA	0	Squirres_CR	0	Patillas_USA_PR	0	Patillas_USA_PR	0
Wash_DC_CH_93	Key_west_Florida_USA	100	Columbus_Georgia_USA	0	El_Paso_Texas_USA	0	Patillas_USA_PR	0	Patillas_USA_PR	0
Wash_DC_CH_94	Key_west_Florida_USA	100	Squirres_CR	0	Patillas_USA_PR	0	Patillas_USA_PR	0	Patillas_USA_PR	0
Wash_DC_DC14_71	Key_west_Florida_USA	100	Squirres_CR	0	Patillas_USA_PR	0	Columbus_Georgia_USA	0	Patillas_USA_PR	0
Wash_DC_DC14_73	Key_west_Florida_USA	100	Squirres_CR	0	Patillas_USA_PR	0	Patillas_USA_PR	0	Patillas_USA_PR	0
Wash_DC_DC14_75	Columbus_Georgia_USA	80.559	Key_west_Florida_USA	18.96	Columbus_Georgia_USA	0.481	El_Paso_Texas_USA	0	Patillas_USA_PR	0
Wash_DC_DC14_82	Key_west_Florida_USA	100	Columbus_Georgia_USA	0	Squirres_CR	0	El_Paso_Texas_USA	0	New_Orleans_Louisiana_USA	0
Wash_DC_DC14_83	Key_west_Florida_USA	97.796	Columbus_Georgia_USA	2.204	Squirres_CR	0	El_Paso_Texas_USA	0	El_Paso_Texas_USA	0
Wash_DC_DC14_84	Key_west_Florida_USA	100	Squirres_CR	0	Patillas_USA_PR	0	Columbus_Georgia_USA	0	El_Paso_Texas_USA	0
RUN7										
Wash_DC_CH_70	Columbus_Georgia_USA	100	Key_west_Florida_USA	0	Patillas_USA_PR	0	Squirres_CR	0	Amacuzac_MEX	0
Wash_DC_CH_95	Columbus_Georgia_USA	100	Key_west_Florida_USA	0	Squirres_CR	0	El_Paso_Texas_USA	0	New_Orleans_Louisiana_USA	0
Wash_DC_CH_79	Key_west_Florida_USA	100	Squirres_CR	0	Patillas_USA_PR	0	Columbus_Georgia_USA	0	New_Orleans_Louisiana_USA	0
Wash_DC_CH_97	Key_west_Florida_USA	100	Columbus_Georgia_USA	0	Squirres_CR	0	El_Paso_Texas_USA	0	New_Orleans_Louisiana_USA	0
Wash_DC_CH_98	Key_west_Florida_USA	100	Columbus_Georgia_USA	0	Squirres_CR	0	Patillas_USA_PR	0	New_Orleans_Louisiana_USA	0
Wash_DC_CH_87	Key_west_Florida_USA	100	Squirres_CR	0	Patillas_USA_PR	0	New_Orleans_Louisiana_USA	0	Columbus_Georgia_USA	0
Wash_DC_DC14_70	Columbus_Georgia_USA	100	Key_west_Florida_USA	0	Patillas_USA_PR	0	Squirres_CR	0	Amacuzac_MEX	0
Wash_DC_CH_92	Key_west_Florida_USA	100	Columbus_Georgia_USA	0	Squirres_CR	0	El_Paso_Texas_USA	0	New_Orleans_Louisiana_USA	0
Wash_DC_DC14_82	Columbus_Georgia_USA	100	Key_west_Florida_USA	0	Squirres_CR	0	El_Paso_Texas_USA	0	Patillas_USA_PR	0
Wash_DC_DC14_83	Columbus_Georgia_USA	100	Key_west_Florida_USA	0	Squirres_CR	0	Patillas_USA_PR	0	El_Paso_Texas_USA	0
Wash_DC_DC14_84	Key_west_Florida_USA	100	Squirres_CR	0	Columbus_Georgia_USA	0	Patillas_USA_PR	0	El_Paso_Texas_USA	0
RUN8										
Wash_DC_CH_70	Columbus_Georgia_USA	86.653	Key_west_Florida_USA	13.347	Patillas_USA_PR	0	Squirres_CR	0	New_Orleans_Louisiana_USA	0
Wash_DC_CH_95	Key_west_Florida_USA	100	El_Paso_Texas_USA	0	Squirres_CR	0	Columbus_Georgia_USA	0	New_Orleans_Louisiana_USA	0
Wash_DC_CH_79	Key_west_Florida_USA	100	Squirres_CR	0	Patillas_USA_PR	0	Columbus_Georgia_USA	0	New_Orleans_Louisiana_USA	0
Wash_DC_CH_97	Key_west_Florida_USA	100	El_Paso_Texas_USA	0	Squirres_CR	0	Columbus_Georgia_USA	0	Amacuzac_MEX	0
Wash_DC_CH_98	Key_west_Florida_USA	100	Columbus_Georgia_USA	0	Squirres_CR	0	Patillas_USA_PR	0	El_Paso_Texas_USA	0
Wash_DC_CH_87	Key_west_Florida_USA	99.988	Patillas_USA_PR	0.002	Squirres_CR	0	New_Orleans_Louisiana_USA	0	Columbus_Georgia_USA	0
Wash_DC_DC14_70	Key_west_Florida_USA	99.988	Columbus_Georgia_USA	0.002	Patillas_USA_PR	0	Squirres_CR	0	Amacuzac_MEX	0
Wash_DC_CH_92	Key_west_Florida_USA	100	Squirres_CR	0	El_Paso_Texas_USA	0	Columbus_Georgia_USA	0	Patillas_USA_PR	0
Wash_DC_CH_93	Squirres_CR	87.066	Key_west_Florida_USA	12.934	El_Paso_Texas_USA	0	Columbus_Georgia_USA	0	Patillas_USA_PR	0
Wash_DC_CH_94	Columbus_Georgia_USA	100	Key_west_Florida_USA	0	El_Paso_Texas_USA	0	Squirres_CR	0	Amacuzac_MEX	0

(continued)

SUPPLEMENTAL TABLE 3
Continued

Assigned sample	Rank 1	Score %	Rank 2	Score %	Rank 3	Score %	Rank 4	Score %	Rank 5	Score %
Wash_DC_DC14_71	Key_west_Florida_USA	100	Squirres_CR	0	Columbus_Georgia_USA	0	New_Orleans_Louisiana_USA	0	Patillas_USA_PR	0
Wash_DC_DC14_73	Key_west_Florida_USA	100	Squirres_CR	0	Patillas_USA_PR	0	New_Orleans_Louisiana_USA	0	Columbus_Georgia_USA	0
Wash_DC_DC14_75	Columbus_Georgia_USA	100	Key_west_Florida_USA	0	Squirres_CR	0	El_Paso_Texas_USA	0	New_Orleans_Louisiana_USA	0
Wash_DC_DC14_82	Key_west_Florida_USA	100	Columbus_Georgia_USA	0	Squirres_CR	0	Patillas_USA_PR	0	El_Paso_Texas_USA	0
Wash_DC_DC14_83	Columbus_Georgia_USA	64.844	Key_west_Florida_USA	35.156	Squirres_CR	0	El_Paso_Texas_USA	0	New_Orleans_Louisiana_USA	0
Wash_DC_DC14_84	Key_west_Florida_USA	100	Squirres_CR	0	Columbus_Georgia_USA	0	Patillas_USA_PR	0	El_Paso_Texas_USA	0
RUN9										
Wash_DC_CH_70	Key_west_Florida_USA	100	Columbus_Georgia_USA	0	Patillas_USA_PR	0	New_Orleans_Louisiana_USA	0	Squirres_CR	0
Wash_DC_CH_95	El_Paso_Texas_USA	99.215	Key_west_Florida_USA	0.785	Columbus_Georgia_USA	0	Squirres_CR	0	New_Orleans_Louisiana_USA	0
Wash_DC_CH_79	Key_west_Florida_USA	100	Squirres_CR	0	Patillas_USA_PR	0	New_Orleans_Louisiana_USA	0	Columbus_Georgia_USA	0
Wash_DC_CH_97	Key_west_Florida_USA	100	Squirres_CR	0	Columbus_Georgia_USA	0	El_Paso_Texas_USA	0	Patillas_USA_PR	0
Wash_DC_CH_98	Key_west_Florida_USA	100	Squirres_CR	0	Patillas_USA_PR	0	New_Orleans_Louisiana_USA	0	Columbus_Georgia_USA	0
Wash_DC_CH_87	Key_west_Florida_USA	100	Squirres_CR	0	Patillas_USA_PR	0	New_Orleans_Louisiana_USA	0	Columbus_Georgia_USA	0
Wash_DC_DC14_70	Key_west_Florida_USA	100	Columbus_Georgia_USA	0	Patillas_USA_PR	0	New_Orleans_Louisiana_USA	0	Squirres_CR	0
Wash_DC_CH_92	Key_west_Florida_USA	100	Squirres_CR	0	El_Paso_Texas_USA	0	Columbus_Georgia_USA	0	Patillas_USA_PR	0
Wash_DC_CH_93	Squirres_CR	100	Key_west_Florida_USA	0	Columbus_Georgia_USA	0	Rio_de_Janeiro_BRA	0	El_Paso_Texas_USA	0
Wash_DC_CH_94	Columbus_Georgia_USA	99.984	Key_west_Florida_USA	0.006	Squirres_CR	0	El_Paso_Texas_USA	0	New_Orleans_Louisiana_USA	0
Wash_DC_DC14_71	Key_west_Florida_USA	100	Squirres_CR	0	Columbus_Georgia_USA	0	New_Orleans_Louisiana_USA	0	Patillas_USA_PR	0
Wash_DC_DC14_73	Key_west_Florida_USA	100	Squirres_CR	0	Patillas_USA_PR	0	Columbus_Georgia_USA	0	New_Orleans_Louisiana_USA	0
Wash_DC_DC14_75	Key_west_Florida_USA	100	Columbus_Georgia_USA	0	Squirres_CR	0	New_Orleans_Louisiana_USA	0	El_Paso_Texas_USA	0
Wash_DC_DC14_82	Key_west_Florida_USA	100	Columbus_Georgia_USA	0	Squirres_CR	0	New_Orleans_Louisiana_USA	0	El_Paso_Texas_USA	0
Wash_DC_DC14_83	Key_west_Florida_USA	100	Columbus_Georgia_USA	0	Squirres_CR	0	El_Paso_Texas_USA	0	New_Orleans_Louisiana_USA	0
Wash_DC_DC14_84	Key_west_Florida_USA	100	Squirres_CR	0	Patillas_USA_PR	0	Columbus_Georgia_USA	0	El_Paso_Texas_USA	0
RUN10										
Wash_DC_CH_70	Key_west_Florida_USA	100	Columbus_Georgia_USA	0	Squirres_CR	0	Patillas_USA_PR	0	Amacuzac_MEX	0
Wash_DC_CH_95	Key_west_Florida_USA	100	Columbus_Georgia_USA	0	Squirres_CR	0	El_Paso_Texas_USA	0	New_Orleans_Louisiana_USA	0
Wash_DC_CH_79	Key_west_Florida_USA	100	Squirres_CR	0	Patillas_USA_PR	0	Columbus_Georgia_USA	0	New_Orleans_Louisiana_USA	0
Wash_DC_CH_97	Key_west_Florida_USA	100	Columbus_Georgia_USA	0	Squirres_CR	0	El_Paso_Texas_USA	0	Amacuzac_MEX	0
Wash_DC_CH_98	Key_west_Florida_USA	100	Columbus_Georgia_USA	0	Squirres_CR	0	Patillas_USA_PR	0	New_Orleans_Louisiana_USA	0
Wash_DC_CH_87	Key_west_Florida_USA	100	Squirres_CR	0	Patillas_USA_PR	0	Columbus_Georgia_USA	0	New_Orleans_Louisiana_USA	0
Wash_DC_DC14_70	Key_west_Florida_USA	100	Columbus_Georgia_USA	0	Squirres_CR	0	Patillas_USA_PR	0	Amacuzac_MEX	0
Wash_DC_CH_82	Key_west_Florida_USA	100	Squirres_CR	0	Columbus_Georgia_USA	0	El_Paso_Texas_USA	0	Patillas_USA_PR	0
Wash_DC_CH_93	Squirres_CR	100	Columbus_Georgia_USA	0	Key_west_Florida_USA	0	El_Paso_Texas_USA	0	New_Orleans_Louisiana_USA	0
Wash_DC_CH_94	Key_west_Florida_USA	100	Columbus_Georgia_USA	0	Squirres_CR	0	Patillas_USA_PR	0	New_Orleans_Louisiana_USA	0
Wash_DC_DC14_71	Key_west_Florida_USA	100	Squirres_CR	0	Columbus_Georgia_USA	0	New_Orleans_Louisiana_USA	0	Patillas_USA_PR	0
Wash_DC_DC14_73	Key_west_Florida_USA	100	Squirres_CR	0	Patillas_USA_PR	0	Columbus_Georgia_USA	0	New_Orleans_Louisiana_USA	0
Wash_DC_DC14_75	Columbus_Georgia_USA	100	Key_west_Florida_USA	0	Squirres_CR	0	El_Paso_Texas_USA	0	New_Orleans_Louisiana_USA	0
Wash_DC_DC14_82	Key_west_Florida_USA	100	Columbus_Georgia_USA	0	Squirres_CR	0	Patillas_USA_PR	0	Dominica_DOM	0
Wash_DC_DC14_83	Columbus_Georgia_USA	100	Key_west_Florida_USA	0	Squirres_CR	0	El_Paso_Texas_USA	0	New_Orleans_Louisiana_USA	0
Wash_DC_DC14_84	Key_west_Florida_USA	100	Patillas_USA_PR	0	Squirres_CR	0	El_Paso_Texas_USA	0	Columbus_Georgia_USA	0