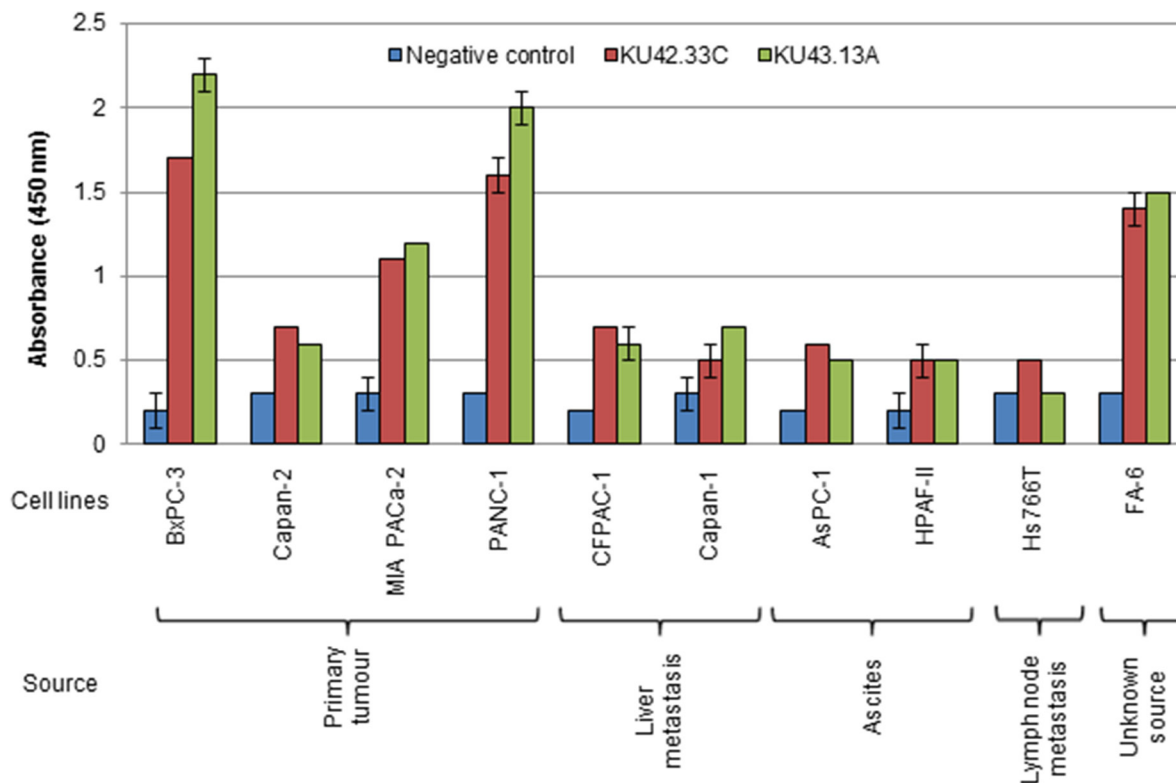
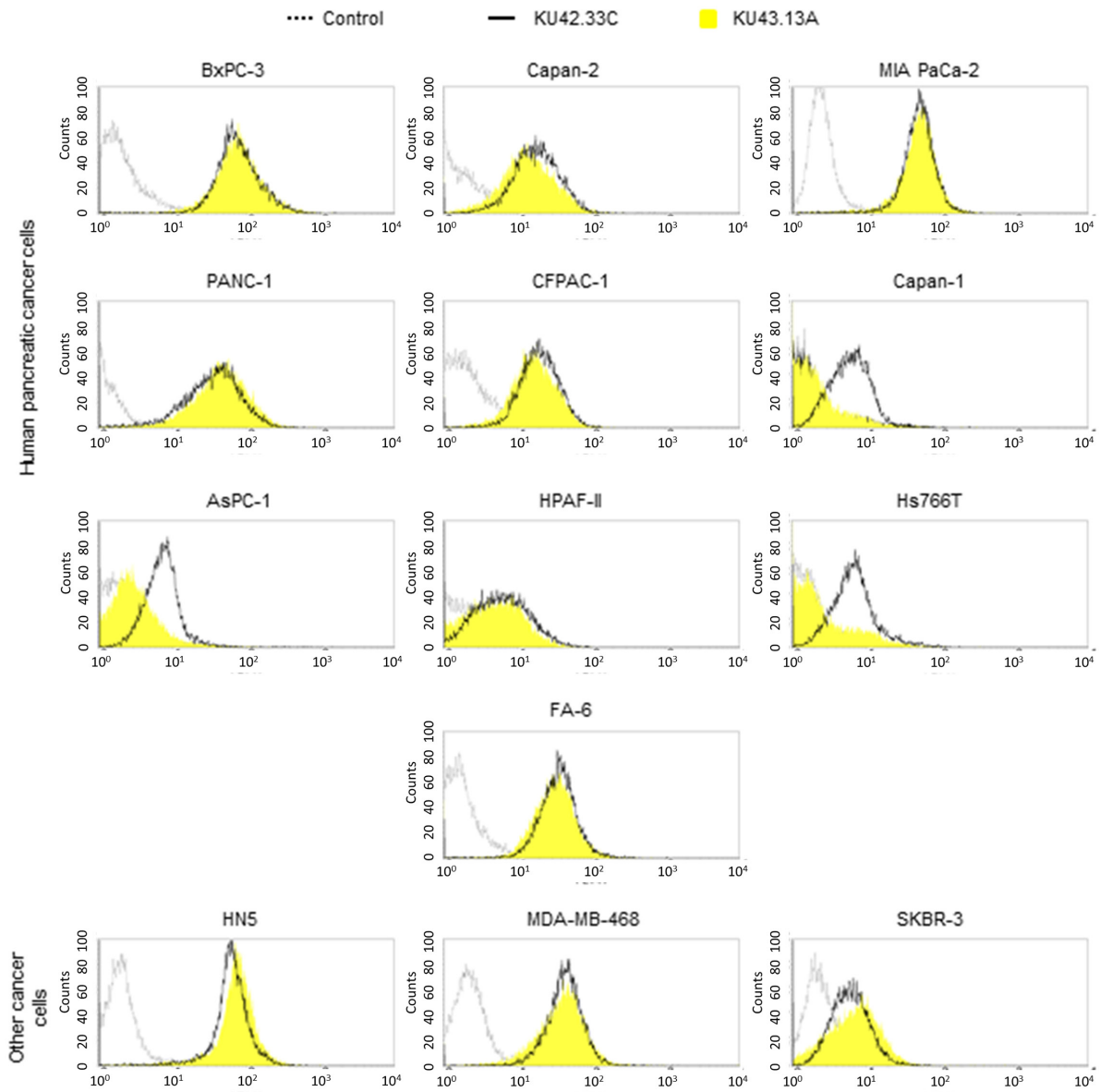


Development of novel monoclonal antibodies against CD109 overexpressed in human pancreatic cancer

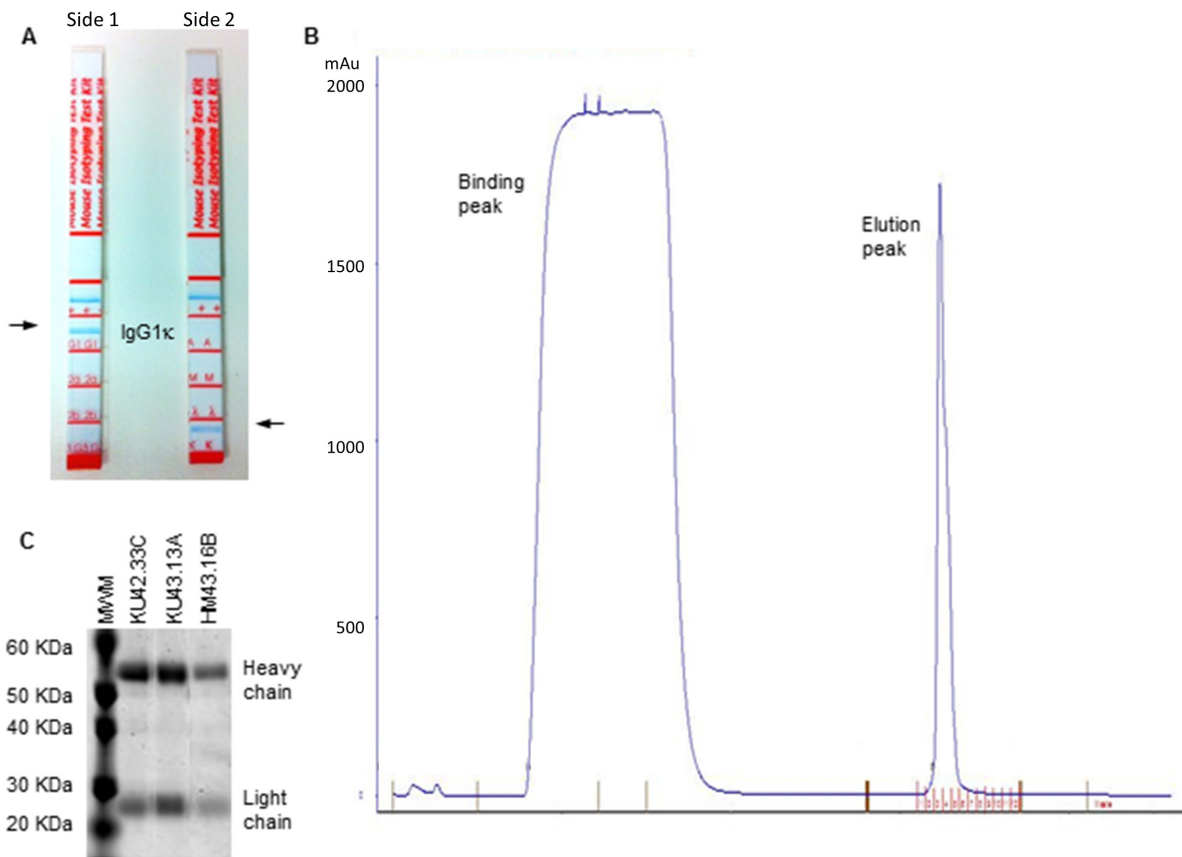
SUPPLEMENTARY MATERIALS



Supplementary Figure 1: Expression level of the antigens recognised by novel mAbs KU42.33C and KU43.13A in a panel of human pancreatic cancer cell lines determined by ELISA. Results are presented as mean absorbance \pm SD.



Supplementary Figure 2: Expression level of the antigens recognised by novel mAbs KU42.33C and KU43.13A on human pancreatic cancer and other cancer cell lines, presented as histogram.



Supplementary Figure 3: Purification of novel monoclonal antibodies. (A) The isotype of mAb KU43.13A determined by mouse mAb Isotyping kit (AbD, Serotec). Top blue band represent the positive control. (B) Example of purification of mAb KU43.13A determined by HiTrap Protein G HP column in an ÄKTAprime plus chromatography system (both from GE Healthcare, UK). (C) Coomassie blue staining of purified monoclonal antibodies analysed by SDS-PAGE under reducing conditions. HM43.16B is a control mouse anti-EGFR IgG1 mAb. MWM: molecular weight marker.

Supplementary Table 1: Patient characteristics, disease grade and staining intensity and distribution of pancreatic cancer samples in tissue microarray (Cat No. PA804a, Biomax US)

See Supplementary File 1

Supplementary Table 2: Patient characteristics and anatomic site of normal tissue microarray (Cat No. MNO661, Biomax US)

No.	Age	Sex	Anatomic site	Scoring
1	37	F	Adrenal gland	negative
2	53	M	Bladder	negative
3	16	M	Bone marrow	negative
4	45	F	Eye	negative
5	46	F	Breast	negative
6	58	M	Cerebellum	negative
7	58	M	Cerebral cortex	negative
8	38	F	Fallopian tube	negative
9	66	M	Esophagus	negative
10	53	F	Stomach	negative
11	47	M	Small intestine	1+
12	26	M	Colon	negative
13	83	M	Rectum	negative
14	58	M	Heart	negative
15	62	M	Kidney	negative
16	67	F	Liver	negative
17	45	F	Lung	negative
18	51	F	Ovary	1+
19	35	M	Pancreas	negative
20	25	M	Parathyroid (adenoma)	negative
21	58	M	Pituitary gland	negative
22	38	F	Placenta	negative
23	61	M	Prostate	negative
24	58	M	Skin	negative
25	1	F	Spinal cord	negative
26	70	M	Spleen	negative
27	46	M	Striated muscle	negative
28	70	M	Testis	negative
29	15	F	Thymus	negative
30	29	F	Thyroid	negative
31	6	F	Tonsil	negative
32	47	F	Uterine cervix	negative
33	41	F	Endometrium	negative