

Gap closure of plasmid sequences by primer walking

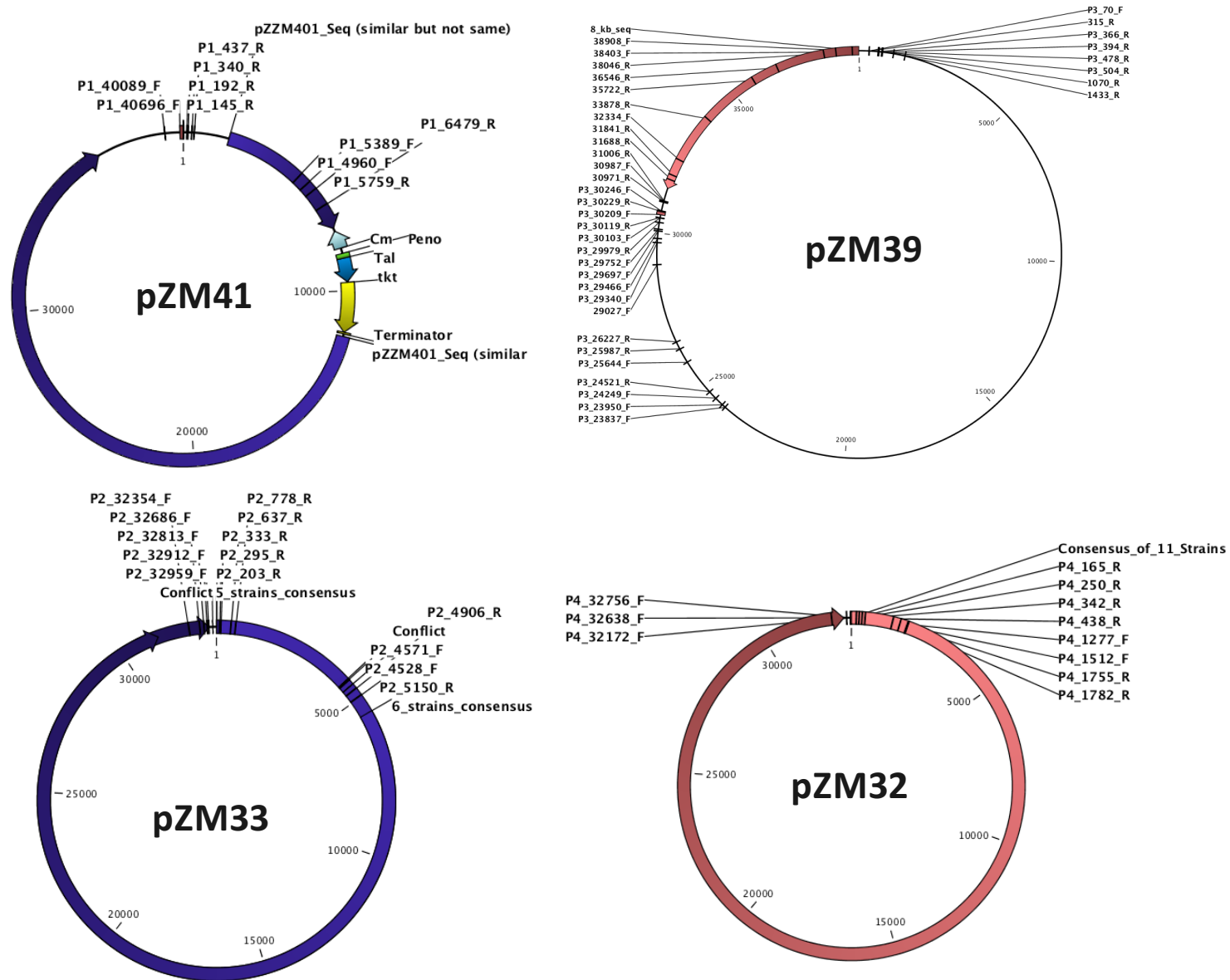


Fig. S1A

Identification of the missing chromosomal sequence using NGS

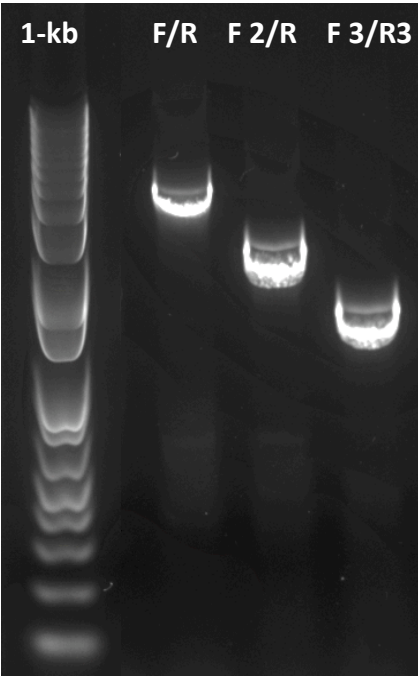
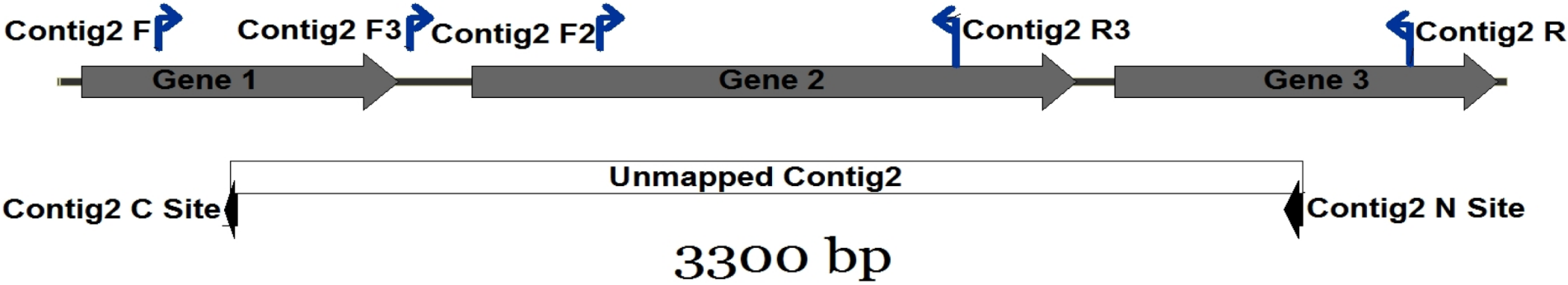


Fig. S1B

Efficient customized rRNA depletion kit developed for RNA-Seq

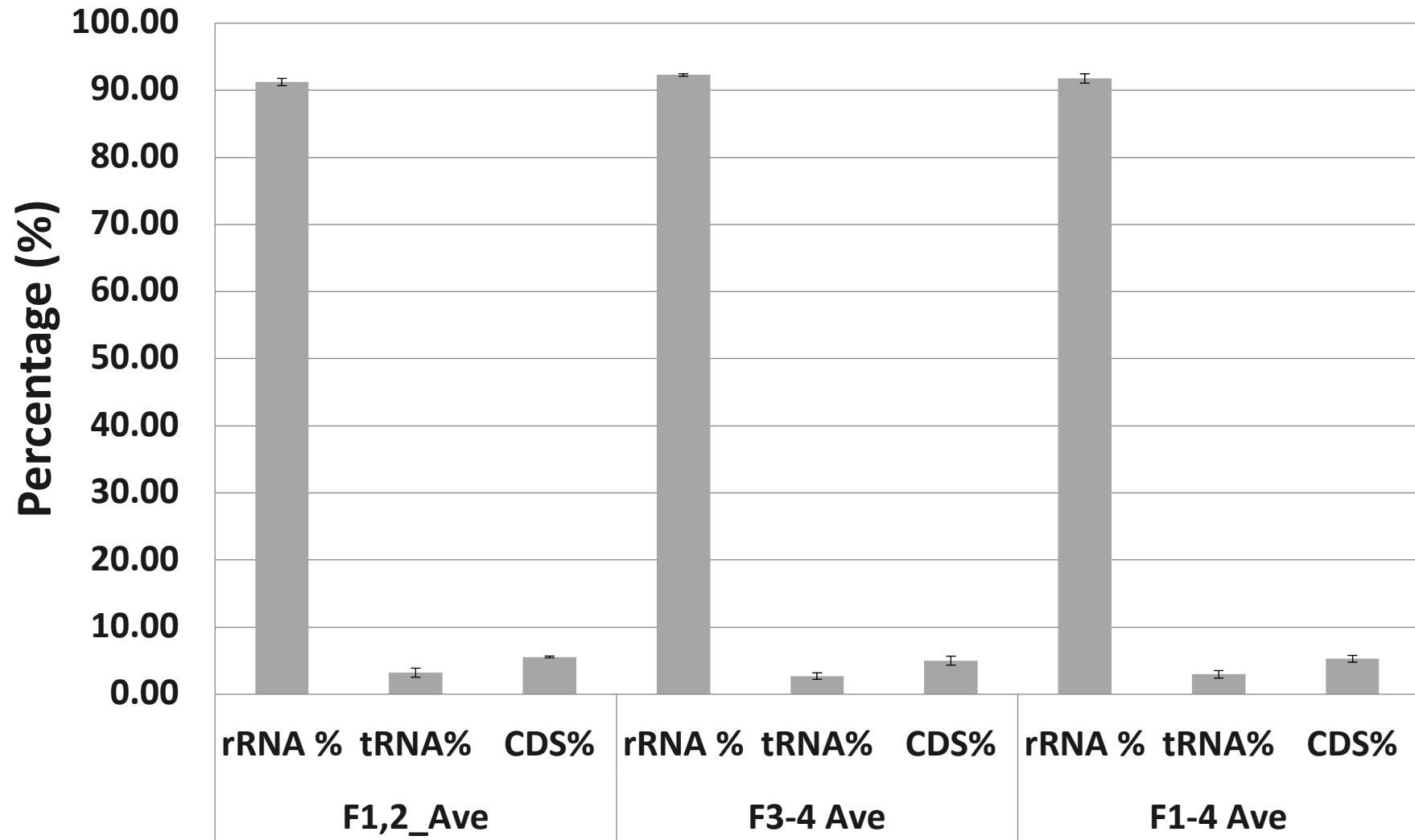


Fig. S2A

Confirmation of rRNA depletion efficiency by qRT-PCR

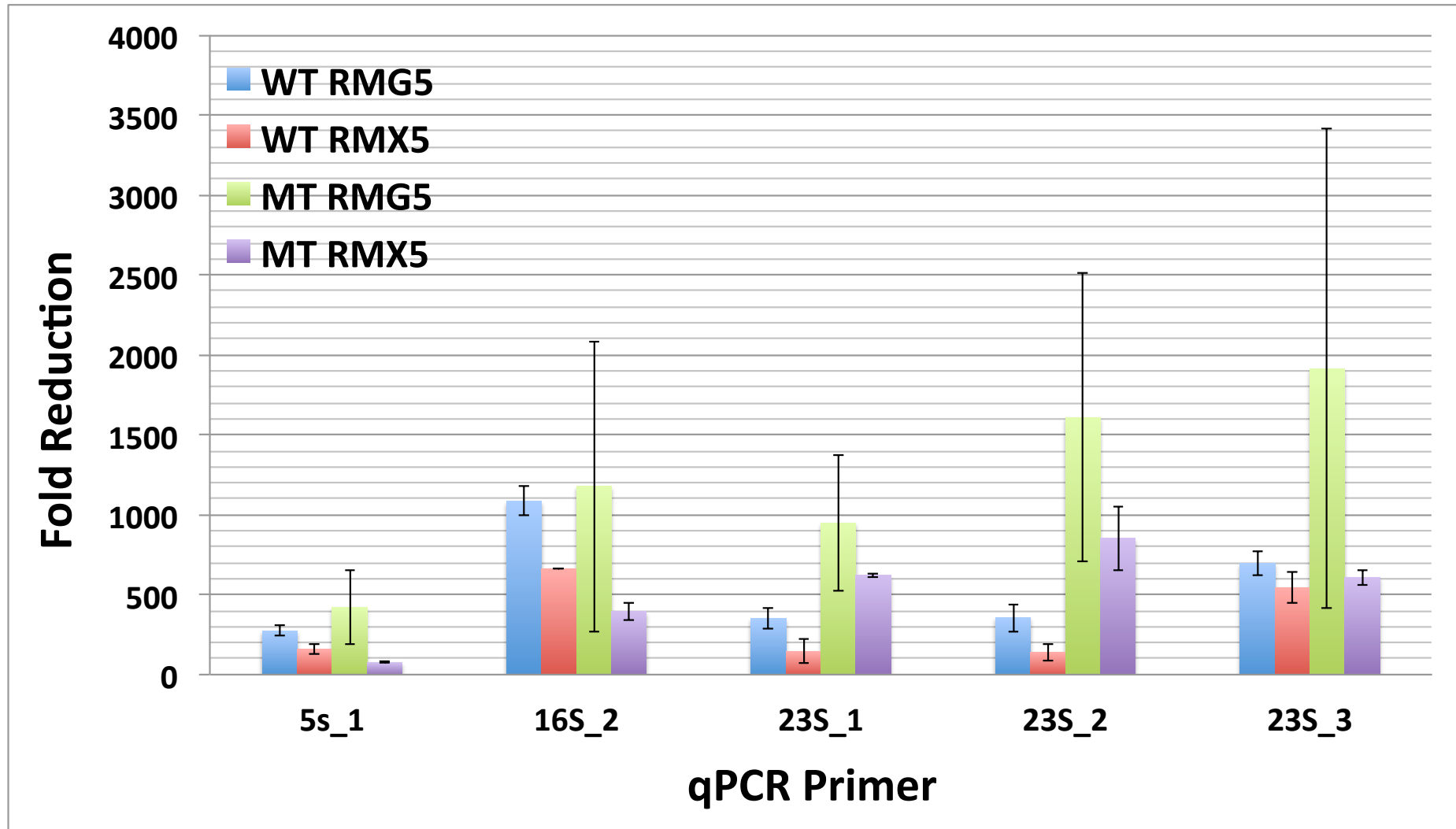


Fig. S2B

Confirmation of rRNA depletion efficiency by RNA-Seq

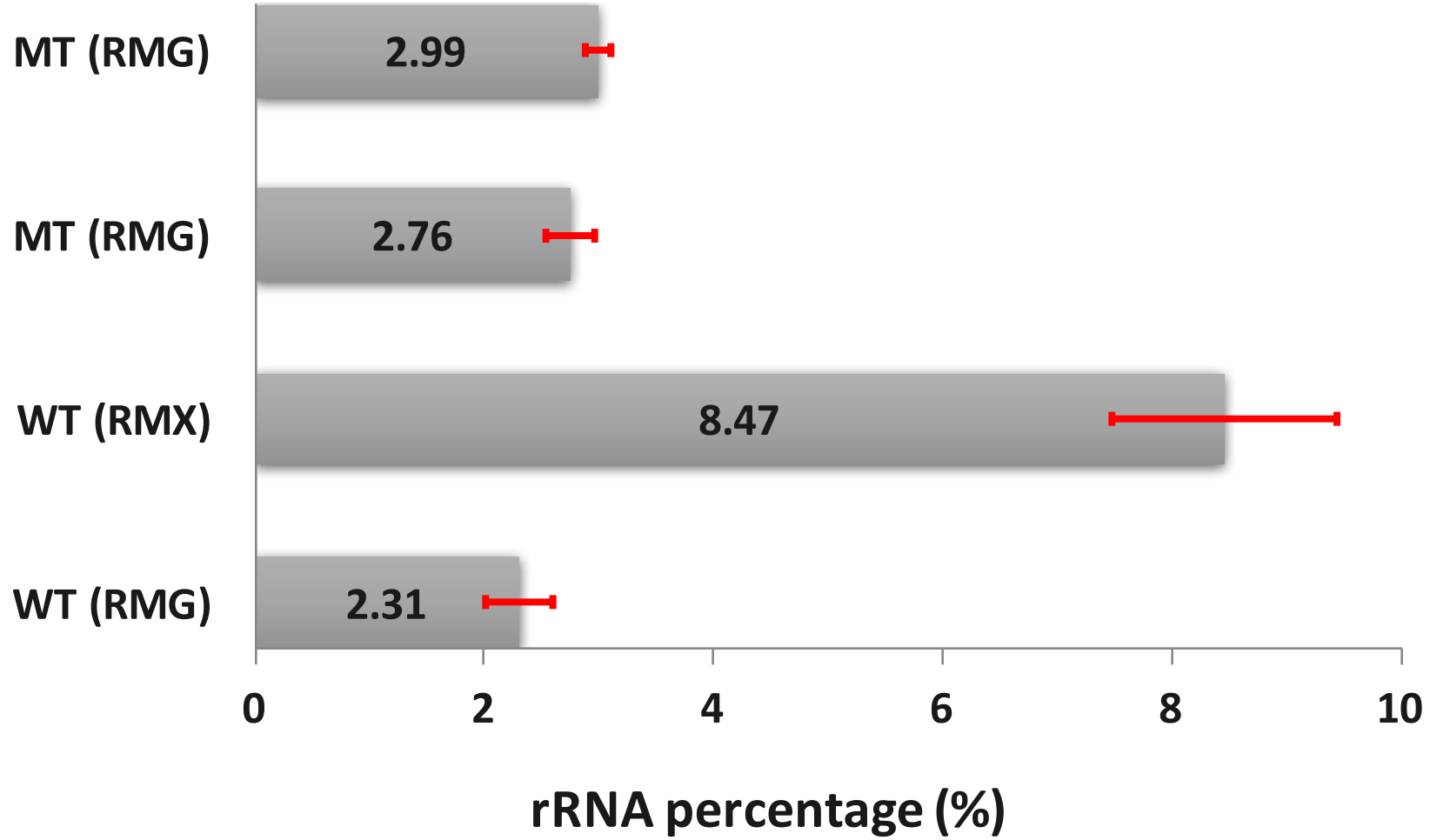


Fig. S2C

Correlation between RNA-Seq replicates

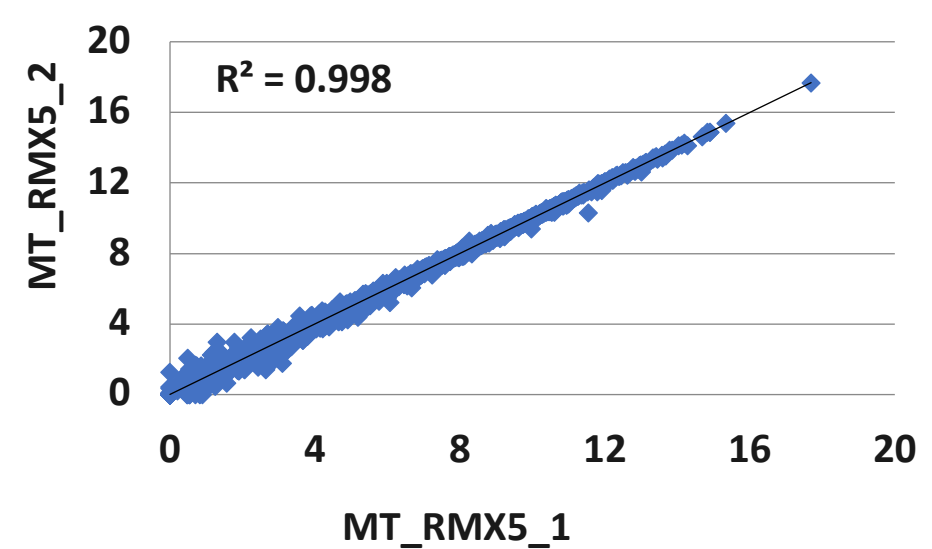
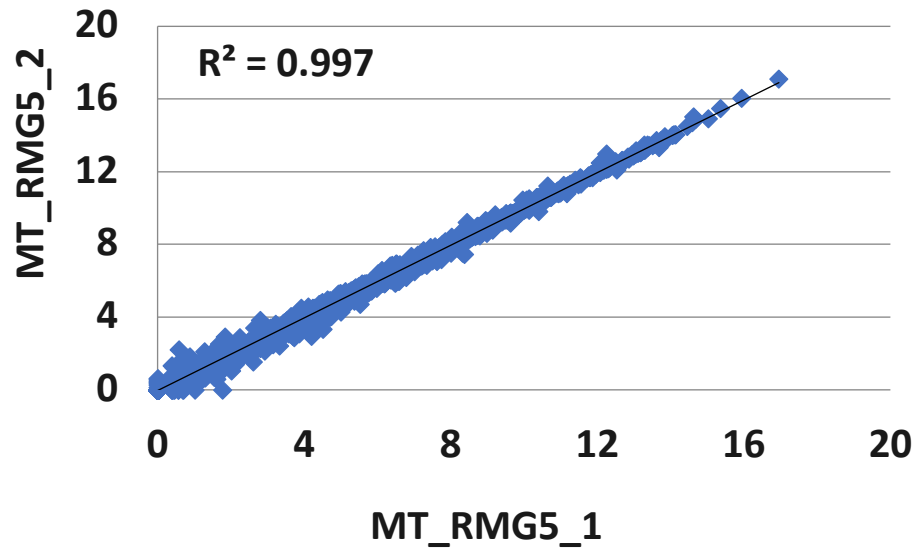
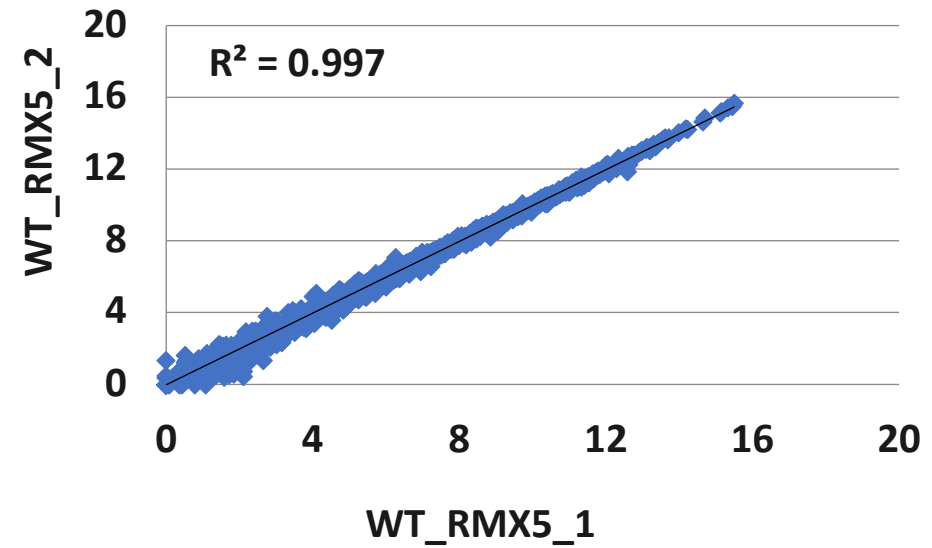
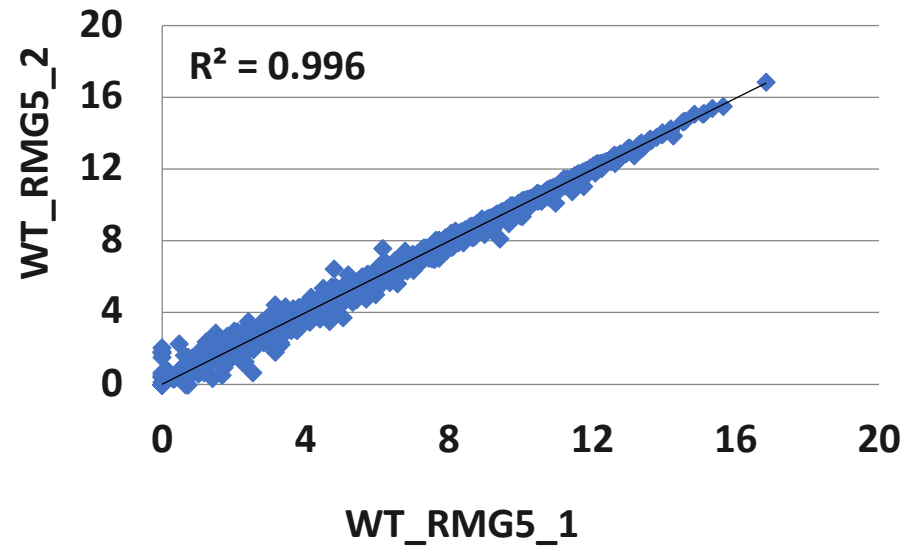


Fig. S2D

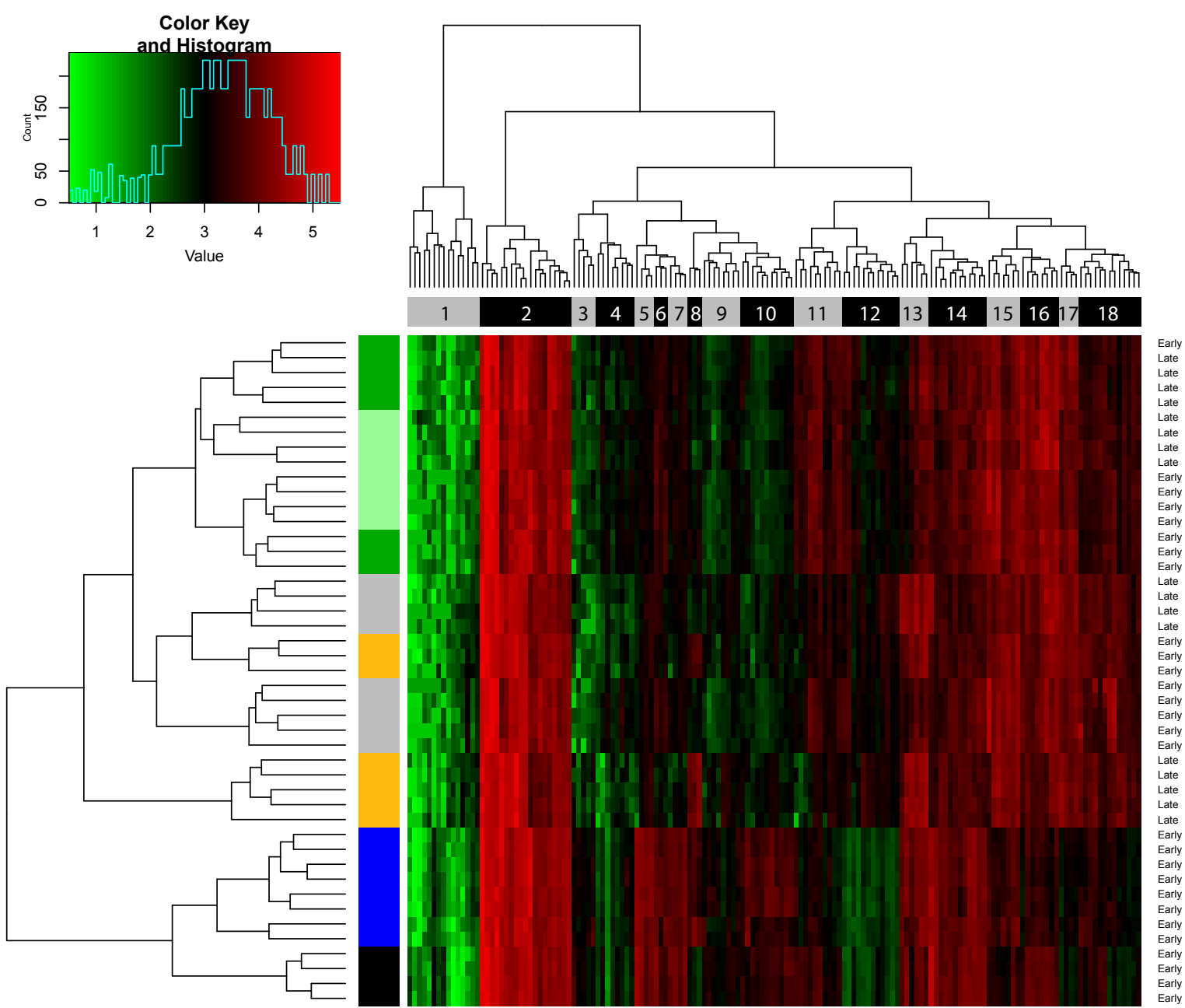


Fig. S3

Z. mobilis plasmid genes