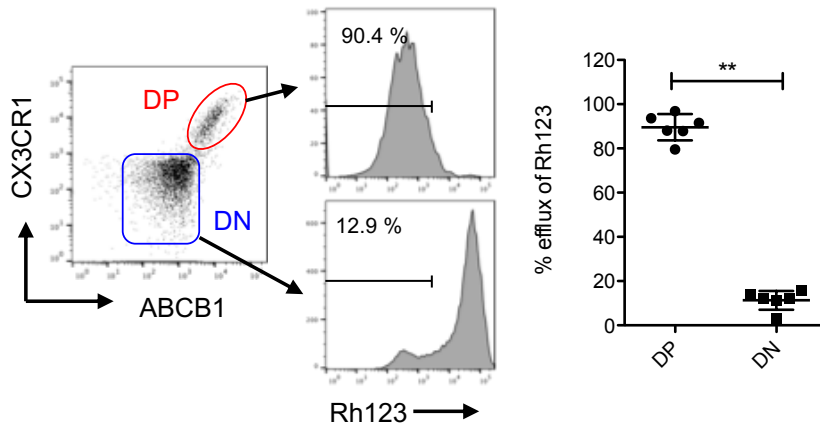


Supplemental Fig. 1.



Supplemental Fig. 1. CX3CR1⁺ CD8⁺ T cells express ABCB1 and have efflux function. Human peripheral blood CD8⁺ T cells were loaded with 10 μ g/ml of Rh123 on ice for 30 min and then washed with PBS and incubated for another 30 min at 37^o C. T cell expression of ABCB1/CX3CR1 and efflux of Rh123 were analyzed by flow cytometry. Percentage of efflux of Rh123 was higher in ABCB1⁺ CX3CR1⁺ T cells than in ABCB1⁻ CX3CR1⁻ T cells. DP: double positive; DN: double negative. **P<0.01 (Mann-Whitney U test Two-tailed, n=6).