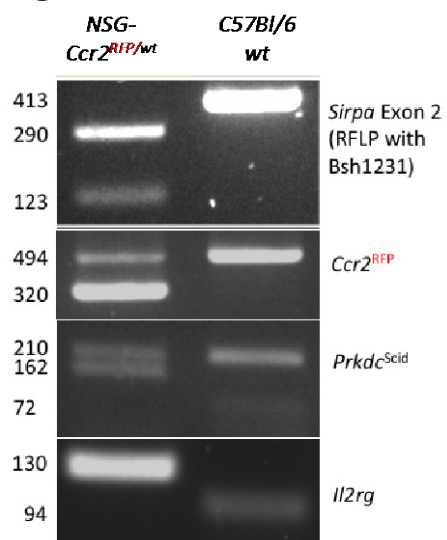


Figure A



Supplementary Table 1

Antibody	Use	Clone	Company
Mouse CD45	FACS	30-F11	Biolegend
Mouse CD8a	FACS	53-6.7	Biolegend
Mouse CD19	FACS	6D5	Biolegend
Mouse Ter119	FACS	TER-119	Biolegend
Mouse Gr1	FACS	RB6-8C5	Biolegend
Mouse TCR β	FACS	H57-97	BD
Mouse CD4	FACS	GK1.5	Biolegend
Mouse/human CD11b	FACS	M1/70	Biolegend
Mouse F4/80	FACS	BM8	Biolegend
Mouse PD-1	FACS, treatment	29F.1A12	Biolegend
Mouse PD-1	IF	J43	eBioscience
Mouse CD4	IF	GK1.5	Abcam
Mouse CD68	IF	KPI	Abcam
Mouse PD-1 isotype control	FACS	RTK2758	Biolegend
Human CD45	FACS	HI30	Biolegend
Human TCR α/β	FACS	IP26	Biolegend
Human CD4	FACS	OKT4	Biolegend
Human CD64	FACS	10.1	Biolegend
Human CD206	FACS	15-2	Biolegend
Human PD-1	FACS	EH12.2H7	Biolegend
Human PD-1 isotype control	FACS	MOPC-21	Biolegend
Human CD32 (block)	FACS	IV.3	Stemcell Technologies
Human CD47	Treatment	B6.H12	BioXcell

Supplementary Table 2

Colorectal cancer stage	Number conversion
0	0
1	1
2A	2
2B	2.33
2C	2.66
3A	3
3B	3.33
3C	3.66
4A	4
4B	4.5

Supplementary Table 3

Sirpa exon 2			
SirpExon 2fw	TGG CTG CCA TCT TTC TT	Sirpa exon 2	402 bp
SirpExon 2rev	TGA AGA AGG CAC AGG CTT ACT	Bsh1231 cuts only homozygous NOD Sirpa	
		Two fragments	112 and 290 bp
Prkdscid			
Scid F	GAGAAAAGGAGGATCATGGATTCAAGAA ATAAATGTAACG	Common (F/R)	210 bp (common)
WR	TGGCCCCTGCTAACTTTCTCTTAGCA	Scid specific (MF/R)	162 bp
MF	TGGTATCCACAACATAAAATACGCTAA	Prkdc specific (F/WR)	72 bp
Scid R	CCTAAGAGTCACTTTCTCCATTTACACAGTGAAGTGCC		
Ccr2-RFP			
13505	TAA ACC TGG TCA CCA CAT GC	Wild type	494 bp
13506	GGA GTA GAG TGG AGG CAG GA	Mutant	320 bp
13507	CTT GAT GAC GTC CTC GGA G	Heterozygote	320 bp and 494 bp
Il2rg			
19475	AAG AGA TTA CTT CTG GCT GTC AG	Wild type	94 bp
19477	CTC TGG GGT TTC TGG GG	Mutant	130 bp
oIMR391 4	ATG CTC CAG ACT GCC TTG	Heterozygote	94 bp and 130 bp