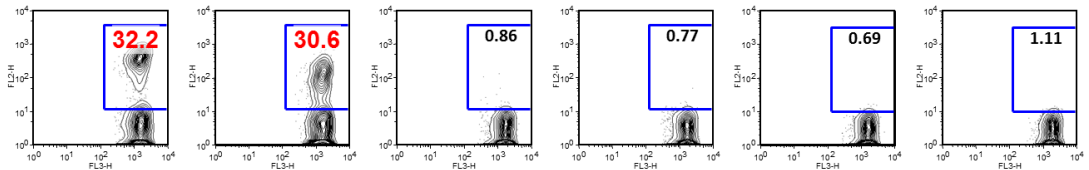
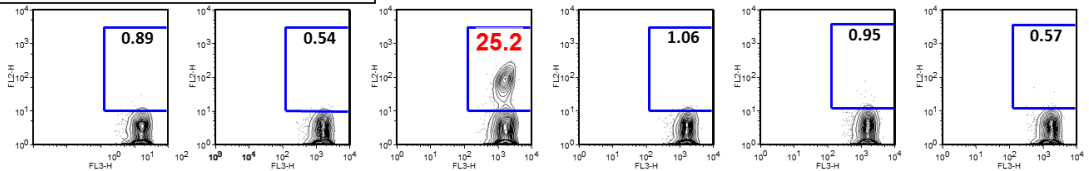
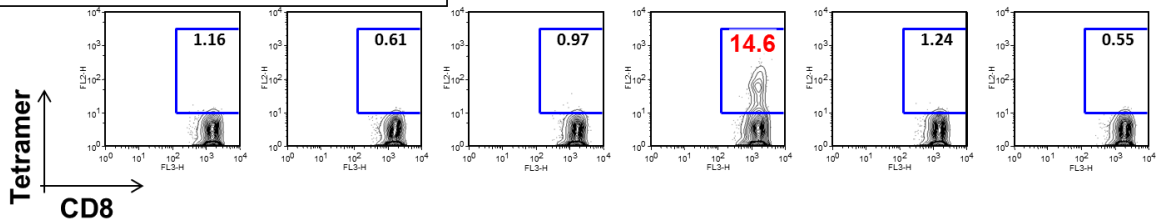


HLA-A*02/NY-ESO-1(157-165) tetramer**HLA-B*35/NY-ESO-1(94-102) tetramer****HLA-B*35/NY-ESO-1(94-104) tetramer**

TCR:	AL	JD	KQ	PP	Jurkat	None
HLA:	A*02	A*02	B*35	B*35	N/A	N/A
Peptide:	157-165	157-165	94-102	94-104	N/A	N/A

Supplementary Figure S2

Tetramer staining of MHC class I-restricted NY-ESO-1-specific TCR-expressing T cells. NY-ESO-1-specific TCR-expressing retroviral vectors were constructed from 4 NY-ESO-1-specific CD8⁺ T-cell clones: AL, JD, KQ, and PP. As a control TCR gene, a TCR-expressing vector was constructed from Jurkat. Polyclonally activated T cells from healthy donor PBMC were transduced by retroviral vectors and stained with the indicated tetramer. Staining of cells gated on CD8 is shown.