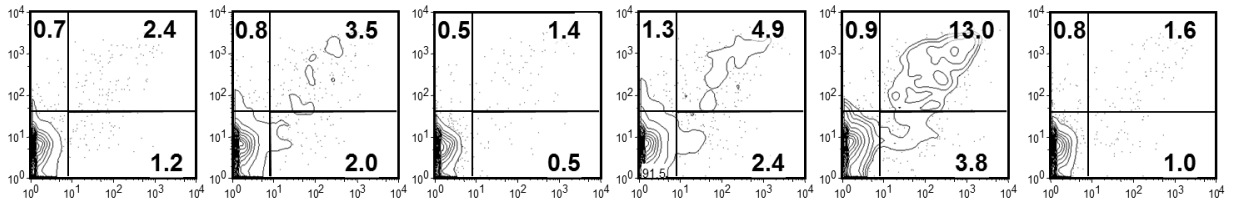
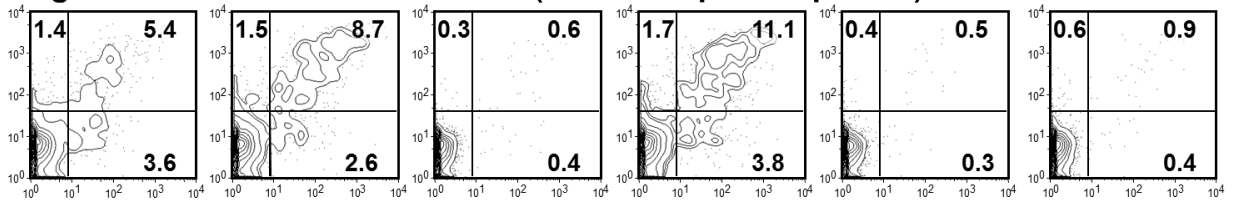


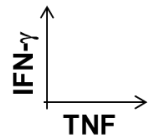
Target: HLA-DP4+DR4+ Colo316 (NY-ESO-1/CIITA-transduced)



Target: HLA-DR1+DP4+ SK-MEL-37 (NY-ESO-1 protein pulsed)



DR1-restricted SB DP4-restricted JM DP4-restricted 3B5 DP4-restricted 5B8 DR4-restricted PB-T None



Supplementary Figure S3

Recognition of naturally processed NY-ESO-1 by MHC class II-restricted NY-ESO-1-specific TCR-expressing T cells. NY-ESO-1-specific TCR-expressing retroviral vectors were constructed from 5 NY-ESO-1-specific CD4⁺ T-cell clones: SB, JM, 3B5, 5B8, and PB-T. Polyclonally activated T cells from healthy donor PBMC were transduced by retroviral vectors and co-cultured for 6 hours with the indicated MHC class II-expressing cancer cell line that expressed NY-ESO-1 or were pulsed with NY-ESO-1 protein in the presence of monensin. Intracellular IFN-γ and TNF-α were stained following cell surface CD4 staining. Staining of cells gated on CD4 is shown.