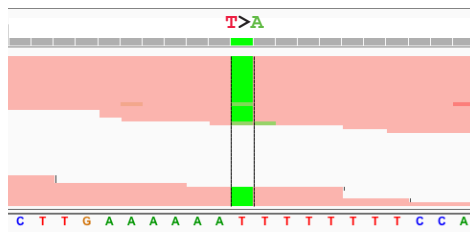
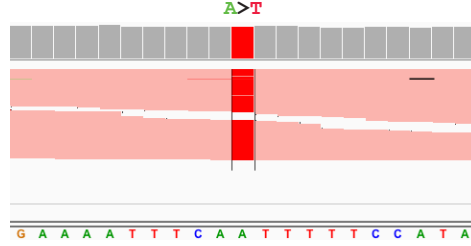


**A**

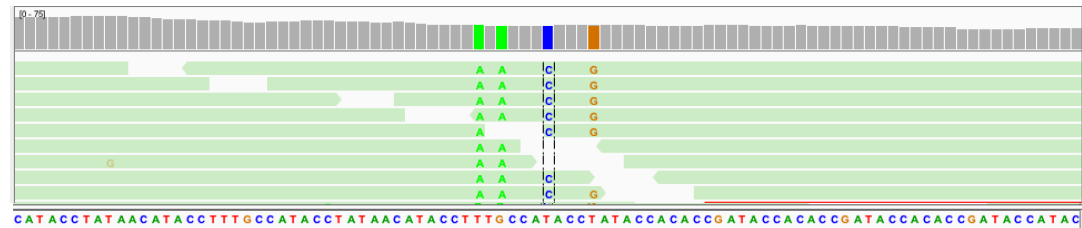
T>A (in ATT context)  
two adjacent repeats



single repeat



**B**



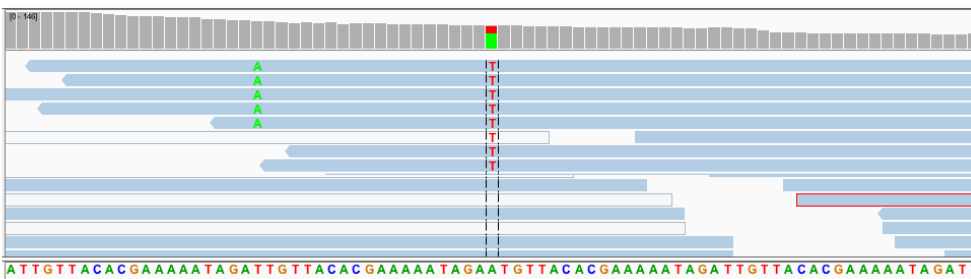
wild-type

(CCATACCTATAACATACCTTTG) 2 CCATACCTATAACATACCTTTG CCATACCTATAACCACCCG (ATACCACCCG) 2

*mlh-1* F20 (CD0134a)

(CCATACCTATAACATACCTTTG) 2 CCATACCTATAACATACCTATA CCACCCGATACCACCCG (ATACCACCCG) 2

**C**



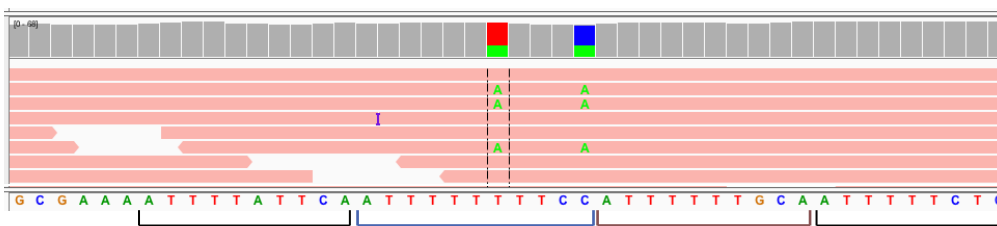
wild-type

(TGTTACACGAAAAATAGAT) n TGTTACACGAAAAATAGAA (TGTTACACGAAAAATAGAT) 2

*mlh-1* F20 (CD0134c)

(TGTTACACGAAAAATAGAT) n TGTTACACGAAAAATAGAT (TGTTACACGAAAAATAGAT) 2

**D**



wild-type

ATTTTATTCA ATTTTTTTTCC ATTTTTTGCA

*mlh-1* F20 (CD0134d)

ATTTTATTCA ATTTTTATTCA ATTTTTTGCA