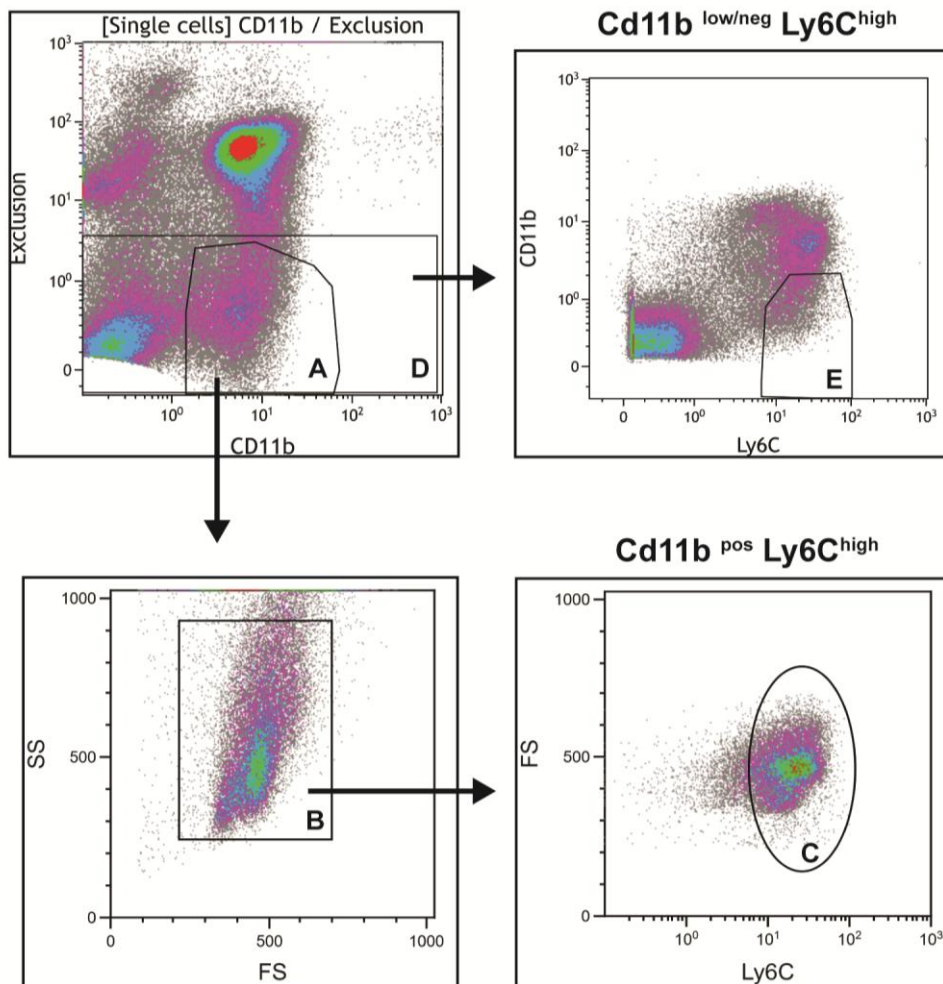


Additional file 2

Flow cytometry gating strategy



Gating strategy for flow cytometry analysis

Gating strategy for flow cytometry analysis used to identify CD11b^{pos} Ly6C^{high} and CD11b^{low/neg} Ly6C^{high} osteoclast precursor populations. First, single cells were selected. For identification of CD11b^{pos} Ly6C^{high} monocytes, cells negative for CD90.2, CD45R/B220, CD49b, NK1.1, Ly6G and positive for CD11b were selected (gate A). Subsequently, cells were back gated for side scatter and FS to exclude cells with high granularity (gate B) and finally Ly6C^{high} cells were selected (gate C). For identification of CD11b^{low/neg} Ly6C^{high}, after exclusion of CD90.2, CD45R/B220, CD49b, NK1.1, Ly6G positive cells (gate D), cells were gated for their expression of CD11b and Ly6C (CD11b^{low/neg} Ly6C^{high}) (gate E).