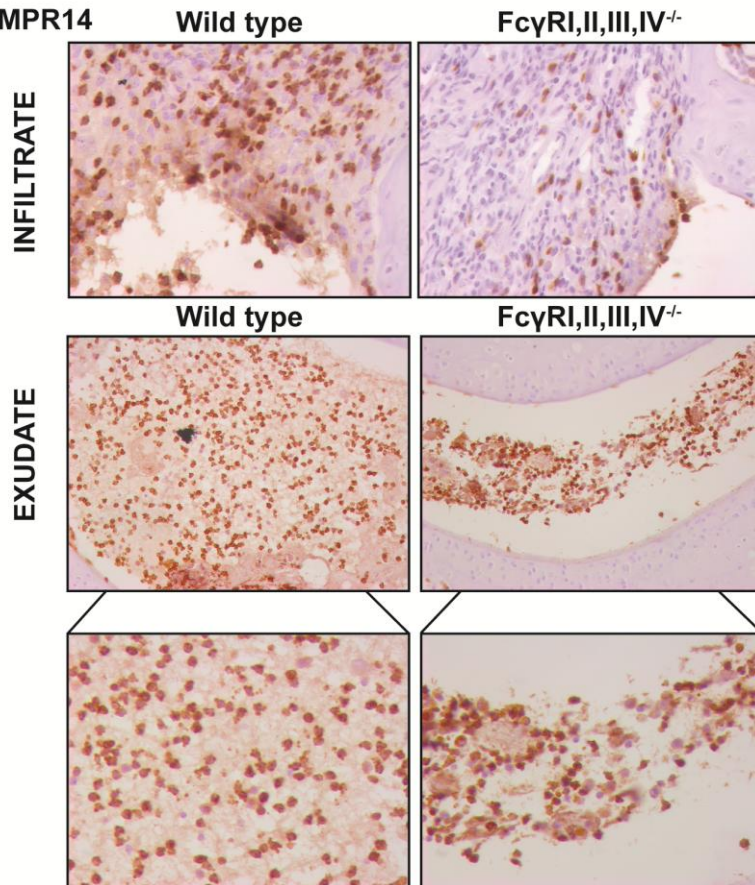


Additional file 3

A NIMPR14



NIMPR14 and F4/80 positive cells in the infiltrate and in the exudate in the joints of FcγRI,II,III,IV<sup>-/-</sup> mice and their WT controls.

A) Representative photomicrographs of NIMPR14 and B) F4/80 stainings showing neutrophils and macrophages in the infiltrate and in the exudate of the knee joints of FcγRI,II,III,IV<sup>-/-</sup> mice and their WT controls at day 7 after induction of antigen-induced arthritis.

Original magnification 400X for infiltrate and 200x and 400x for exudate.

B F4/80

