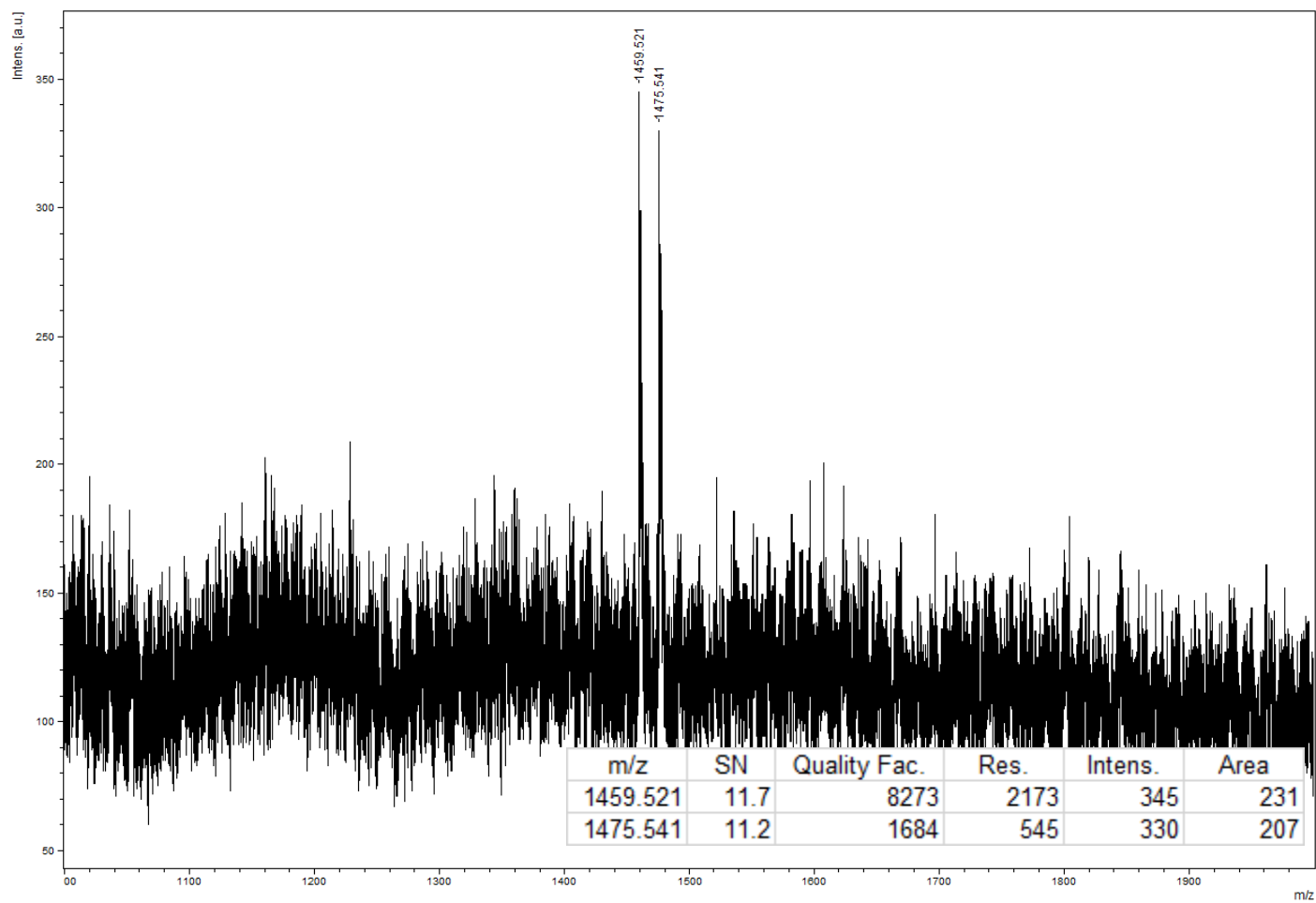


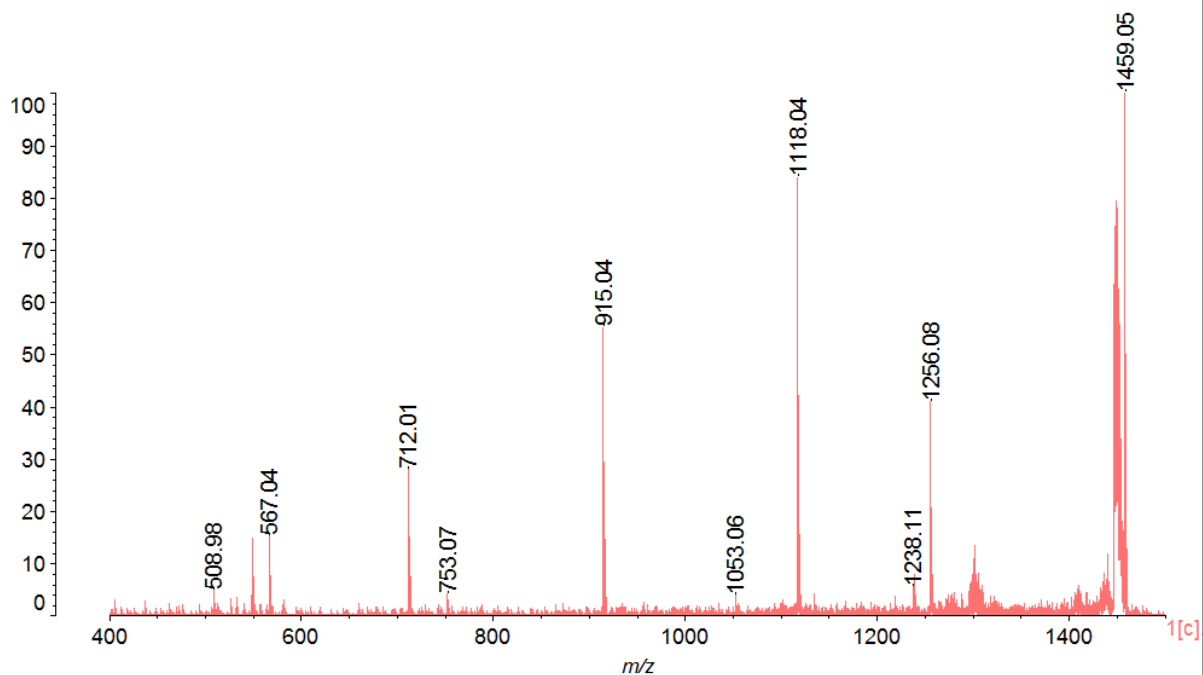
A



B

2.8.5.20090629ver.R04\_120615(S/N:U30014000002)

Data: 2018-02-21-LP110-CID165(1459)-peak20001.J16[c] 21 Feb 2018 12:08 Cal: 120817 6 Apr 2017 11:02 (CID of 1459.08)  
Shimadzu Biotech Axima QIT 2.9.1.20100121: Mode positive, Mid 750+, Power: 110  
%Int. 6.5 mV[sum= 3925 mV] Profiles 1-600 Unsmoothed



2.8.5.20090629ver.R04\_120615(S/N:U30014000002)

Data: 2018-02-21-LP110-CID165(1459)-peak20001.J16[c] 21 Feb 2018 12:08 Cal: 120817 6 Apr 2017 11:02 (CID of 1459.08)  
Shimadzu Biotech Axima QIT 2.9.1.20100121: Mode positive, Mid 750+, Power: 110

Mass	%Area	%Total	Apex (mV)	Resolution	S / N	Flags
508.98	4.10	1.43	0.31	0.00	0.00	M
550.00	14.21	4.94	0.97	0.00	0.00	M
567.04	12.77	4.44	0.99	0.00	0.00	M
712.01	27.87	9.69	1.82	0.00	0.00	M
753.07	4.13	1.44	0.26	0.00	0.00	M
915.04	53.64	18.64	3.61	0.00	0.00	M
1053.06	4.60	1.60	0.25	0.00	0.00	M
1118.04	100.00	34.75	5.48	0.00	0.00	M
1238.11	5.12	1.78	0.35	0.00	0.00	M
1256.08	52.57	18.27	2.68	0.00	0.00	M
1459.05	8.72	3.03	6.54	0.00	0.00	M