

Supplemental Materials

Molecular Biology of the Cell

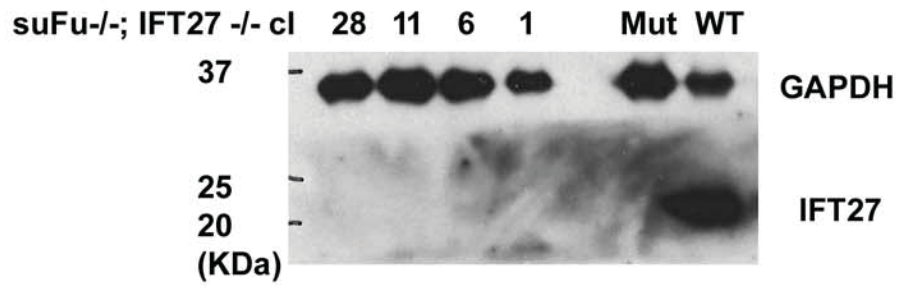
Eguether et al.

Figure S1. Characterization of CRISPR Knock Out cells

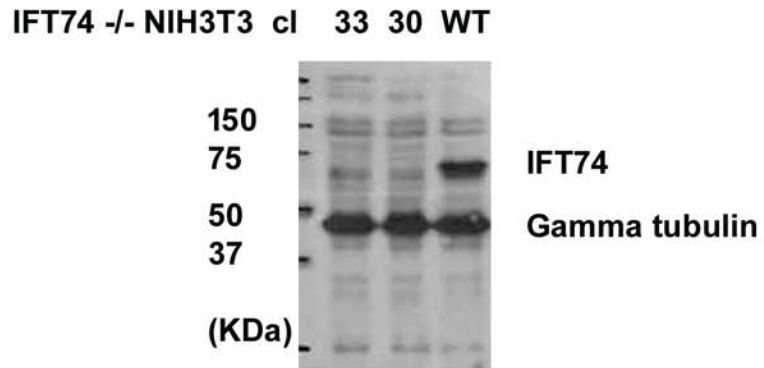
A. Immunoblot showing that IFT27 is not expressed in CRISPR *SuFu*^{-/-}, *Ift27*^{-/-} lines (28, 11, 6, 1). *Ift27*^{-/-} (Mut) and wild type (WT) MEFs are included as controls. GAPDH was used as a loading control.

B. Immunoblot showing that IFT74 is not expressed in CRISPR *Ift74*^{-/-} lines (33, 30) but is present in the parental NIH 3T3 (WT) line. Gamma tubulin was used as a loading control. Error Bars are SD.

A



B



Supplemental Figure 1