

Supplementary Figures

All-trans-retinoic acid activates the pro-invasive Src-YAP-Interleukin 6 axis in triple-negative MDA-MB-231 breast cancer cells while cerivastatin reverses this action.

Belén Mezquita,^{1,2,3} Pau Mezquita,³ Montserrat Pau,¹ Laura Gasa,³ Lourdes Navarro,³ Mireia Samitier,¹ Miquel Pons⁴ and Cristóbal Mezquita*²

1. Departament de Biomedicina. Laboratori de Genètica Molecular, Facultat de Medicina, Universitat de Barcelona, Barcelona, Spain
2. Institut d'Investigacions Biomèdiques August Pi i Sunyer (IDIBAPS), Barcelona, Spain
3. Departament de Ciències Bàsiques, Universitat Internacional de Catalunya, Barcelona, Spain
4. Departament de Química Inorgànica i Orgànica. Secció de Química Orgànica. Laboratori de RMN de biomolècules. Universitat de Barcelona.

*Correspondence to: Cristóbal Mezquita, Institut d'Investigacions Biomèdiques August Pi i Sunyer

(IDIBAPS) Casanova 143, 08036 Barcelona, Spain, email address: cmezquita@ub.edu

Figure S1. Full-length images of the cropped blots presented in the main figure 1 A (PY-Src, PY-YAP and actin).

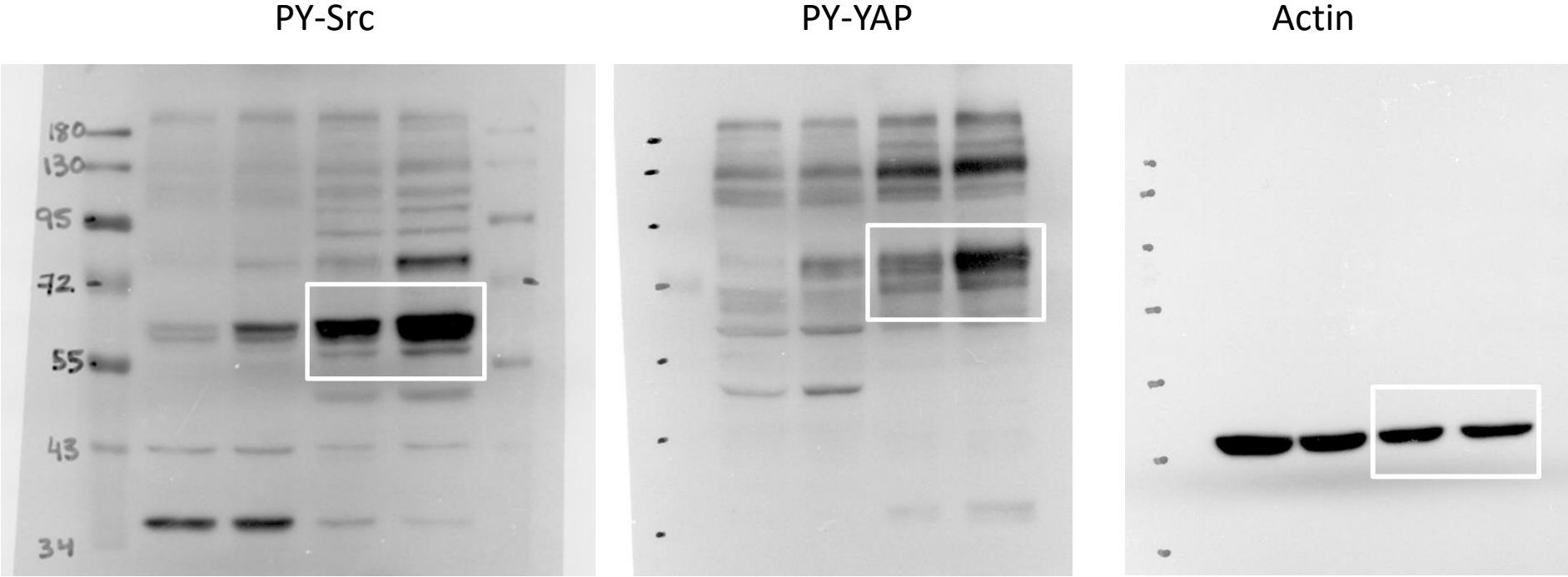
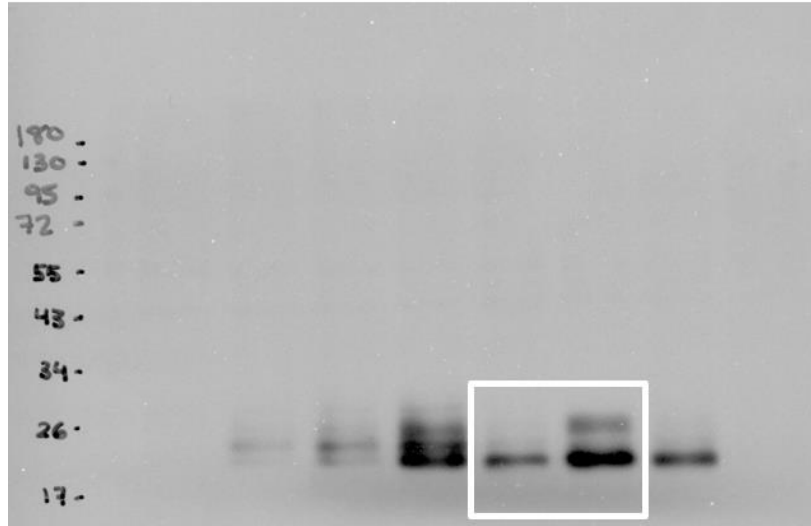


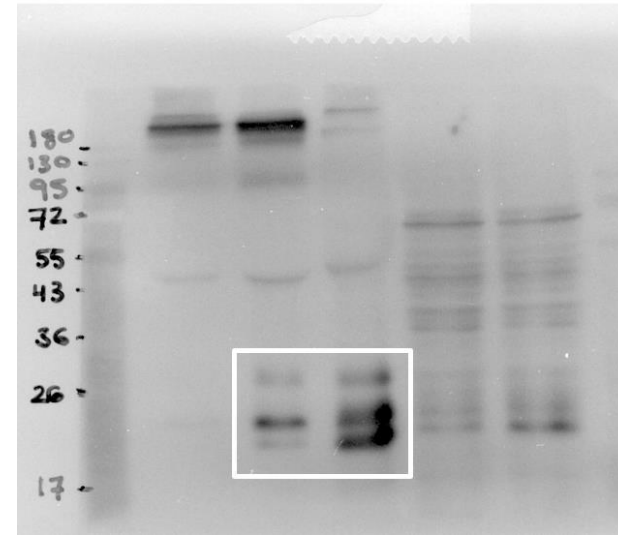
Figure S2. Full-length images of the cropped blots presented in main figure 1 A (IL6, actin and Ponceau)

IL6 Intracellular



Actin

IL6 Extracellular



Ponceau

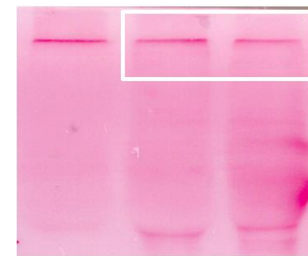
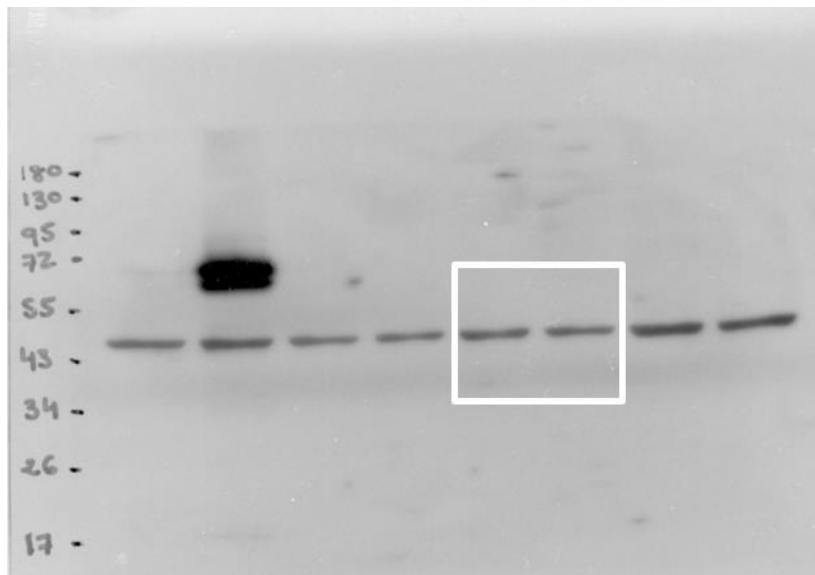
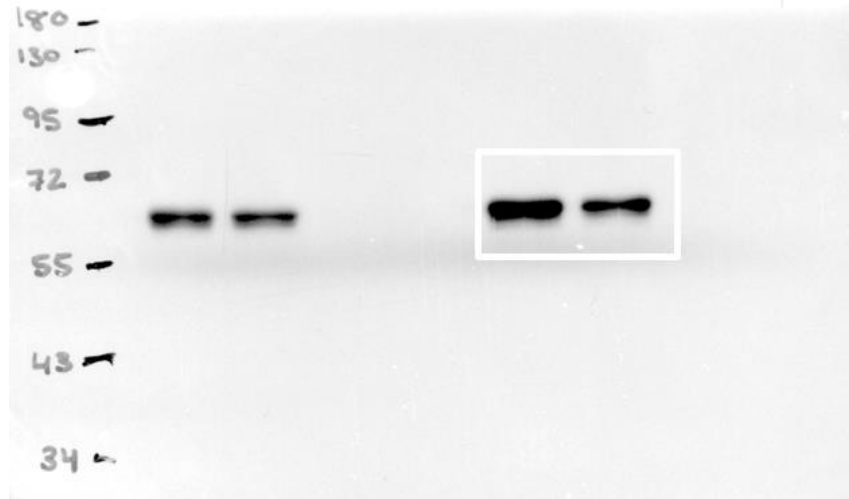
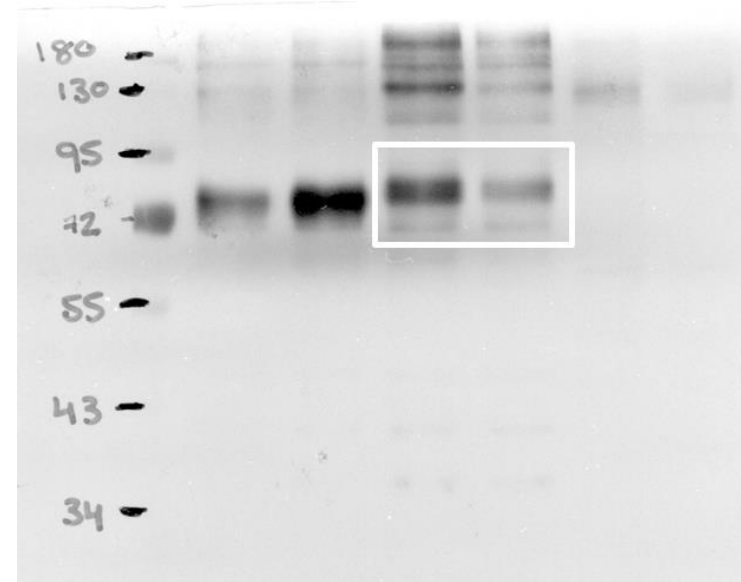


Figure S3. Full-length images of the cropped blots presented in main figure 1 B (PY-Src, PY-YAP and actins)

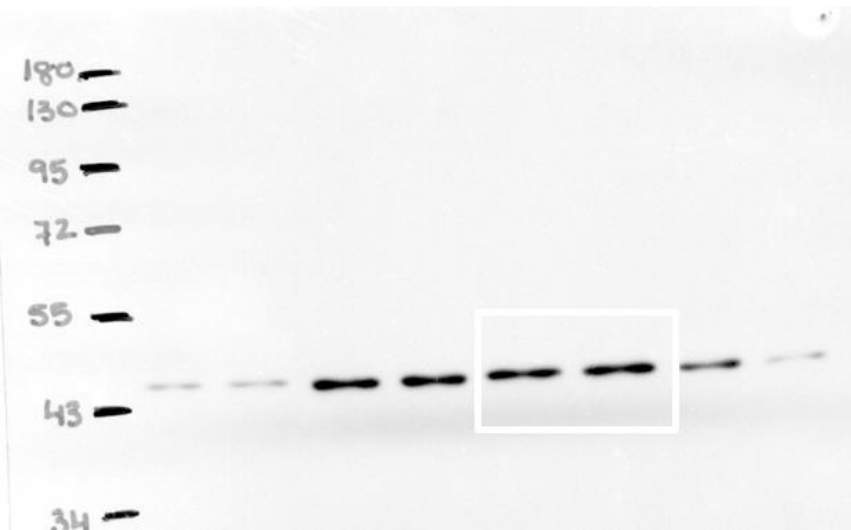
PY-Src



PY-YAP



Actin



Actin

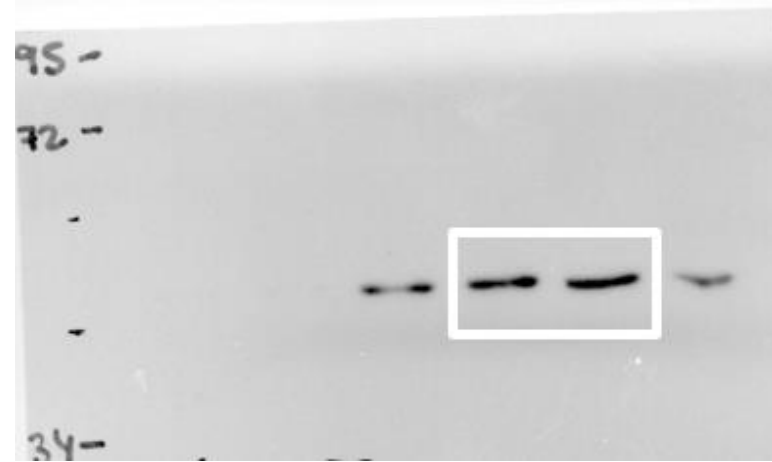
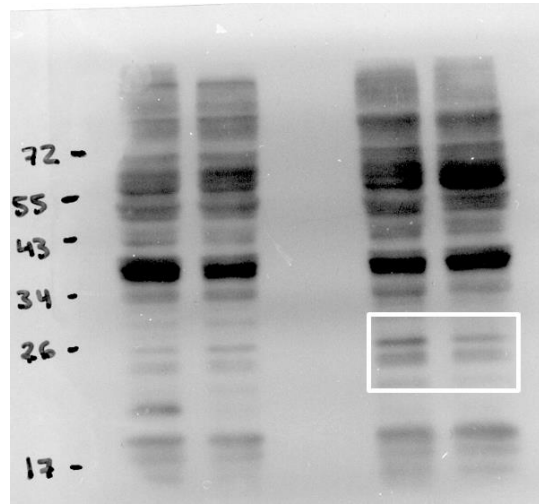


Figure S4. Full-length images of the cropped blots presented in main figure 1 B (IL6 and actin)

IL6 Intracellular



Actin

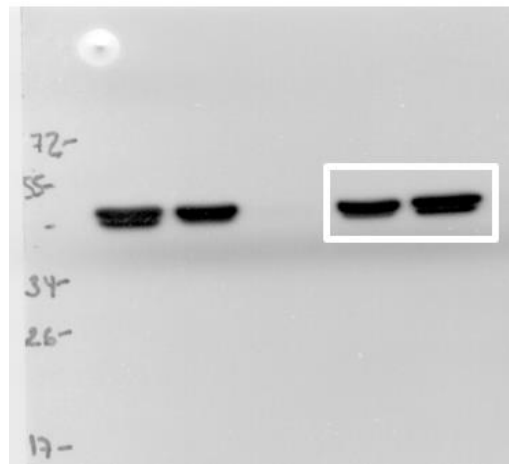
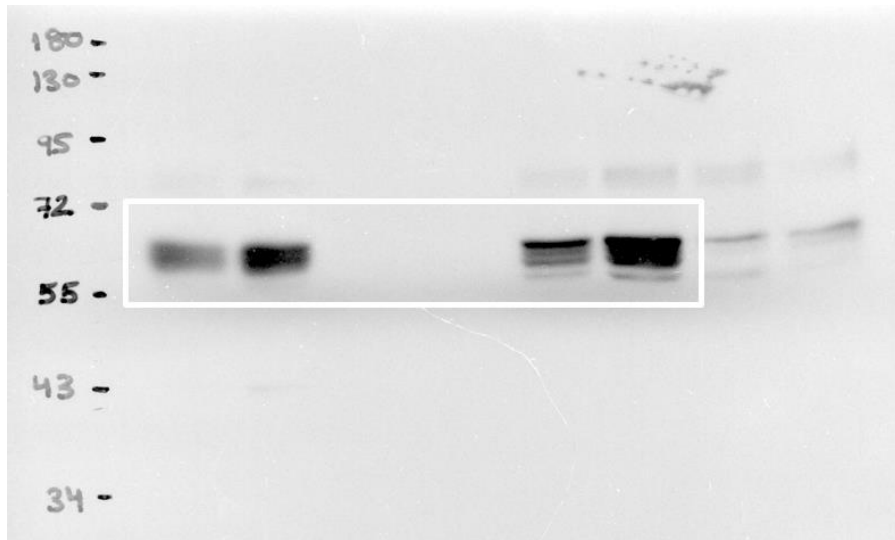
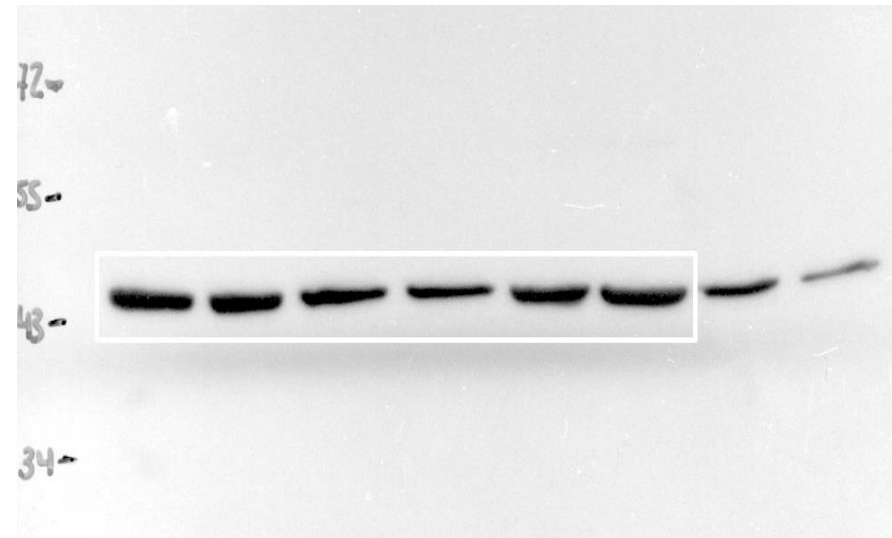


Figure S5. Full-length images of the cropped blots presented in main figure 2A

PY-Src



Actin



Src

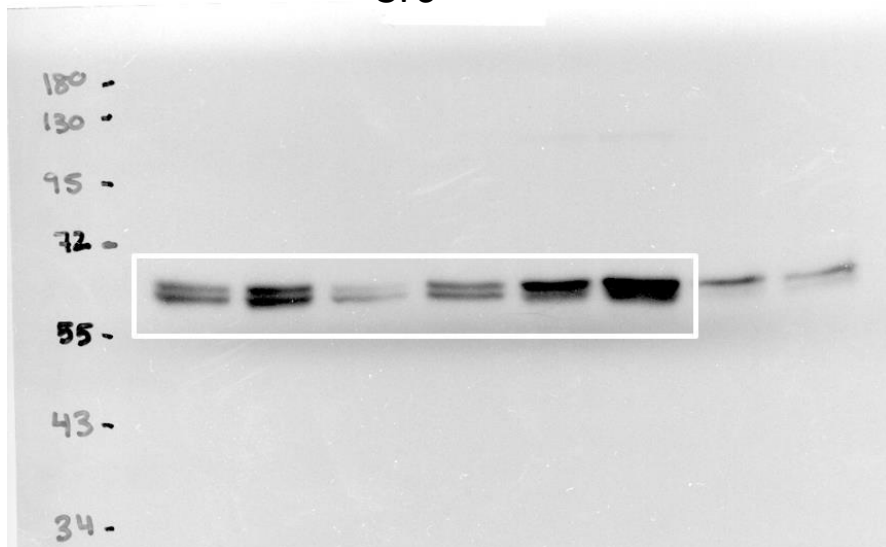
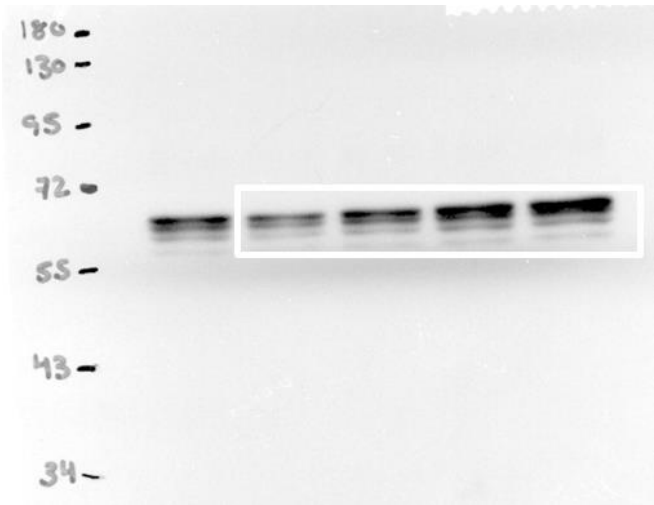
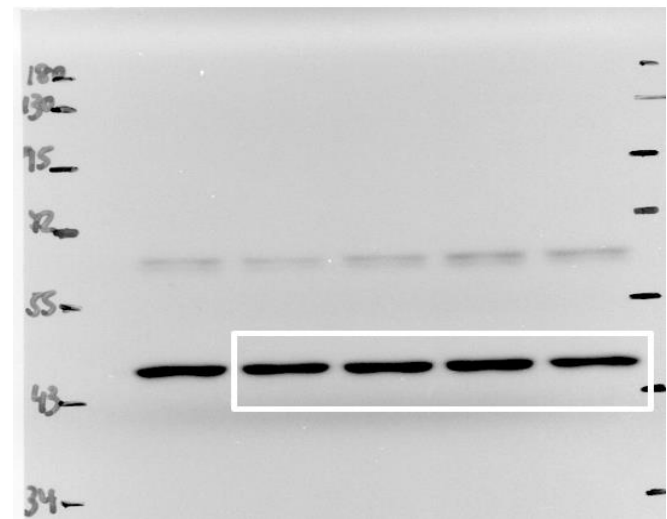


Figure S6. Full-length images of the cropped blots presented in main figure 2B.

PY-Src



Actin



Src

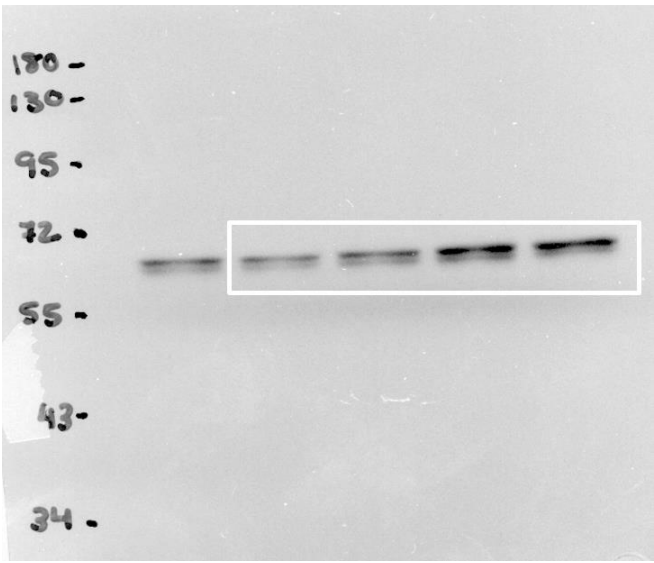
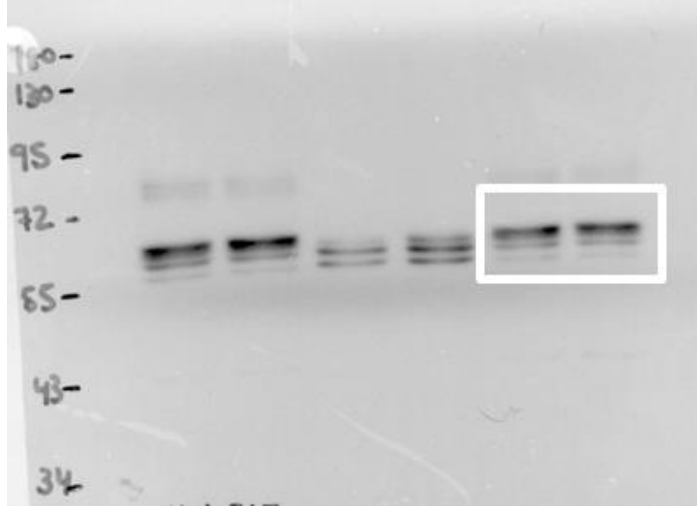
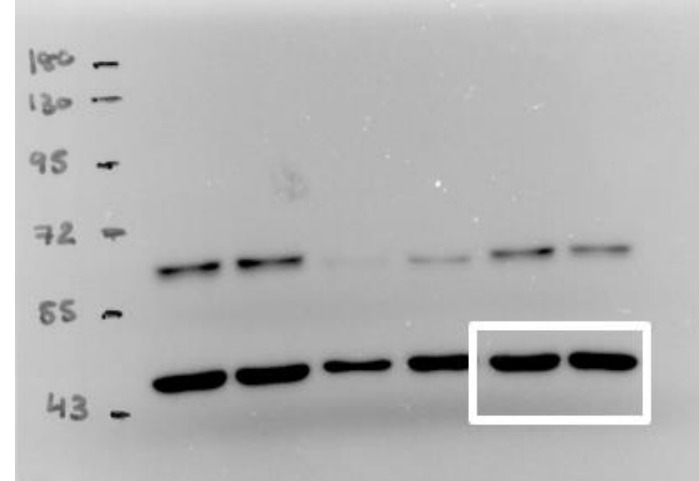


Figure S7. Full-length images of the cropped blots presented in main figure 2C (90 min).

PY-Src



Actin



Src

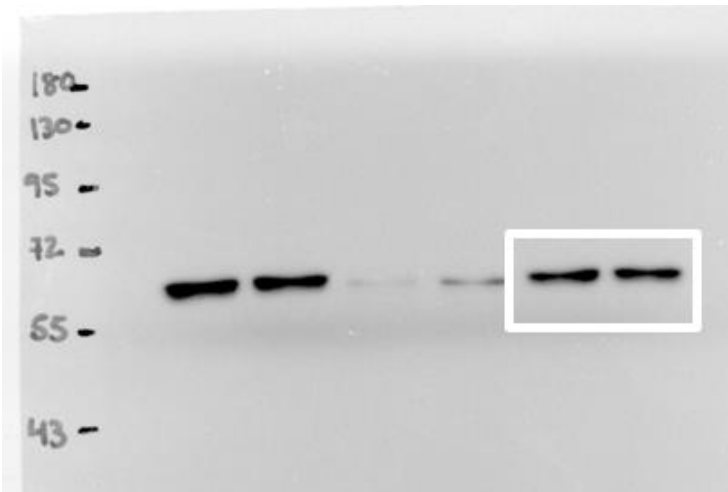
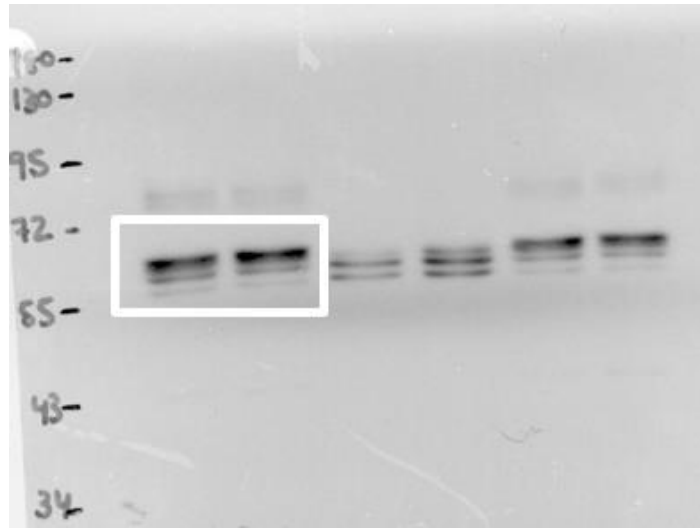
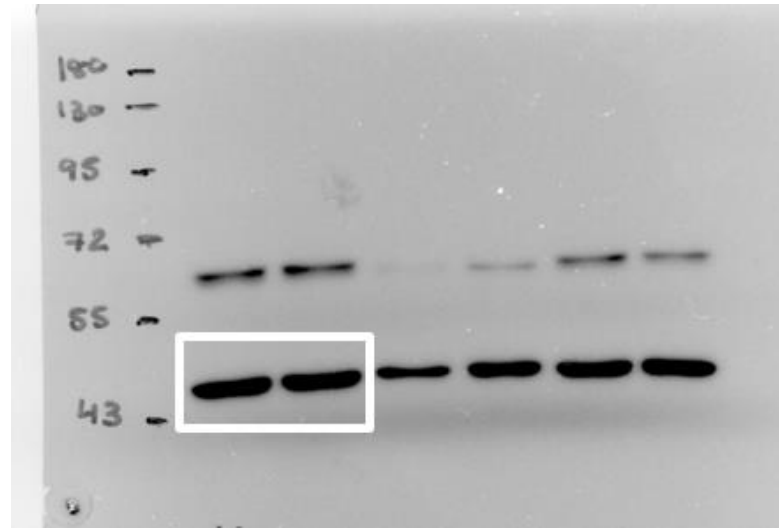


Figure S8. Full-length images of the cropped blots presented in main figure 2C (24 h).

PY-Src



Actin



Src

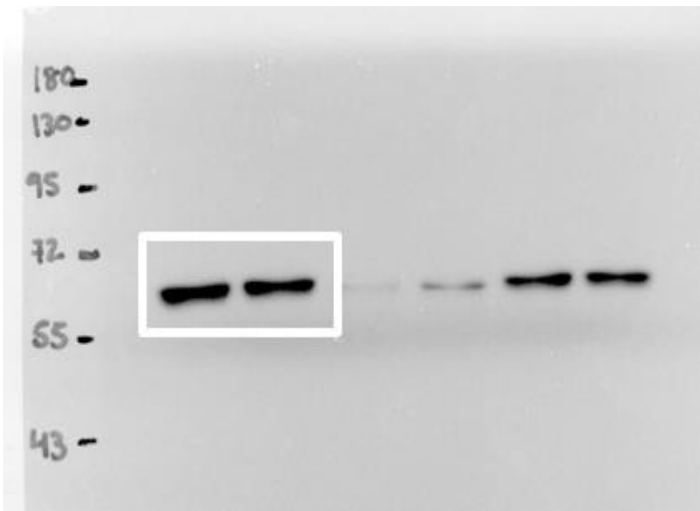
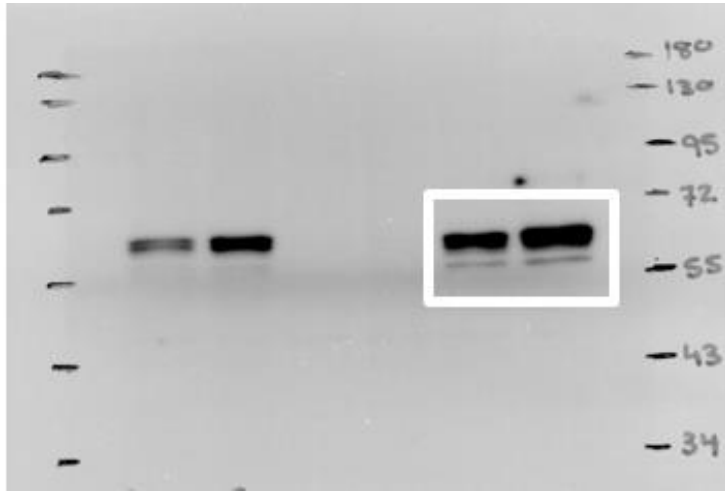
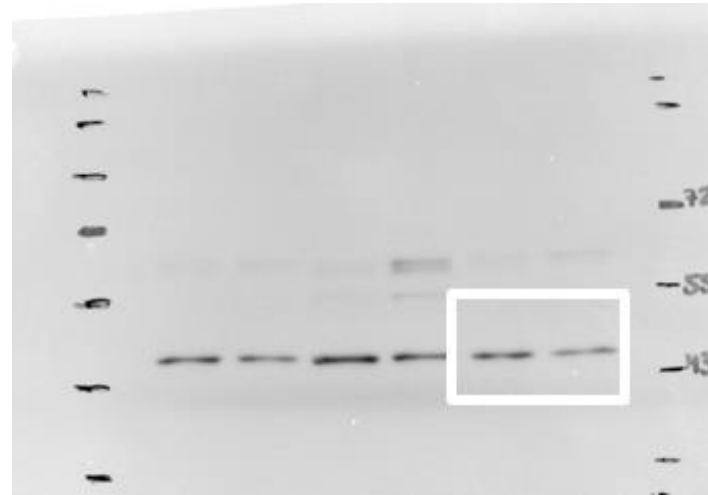


Figure S9. Full-length images of the cropped blots presented in main figure 2C (48 h).

PY-Src



Actin



Src

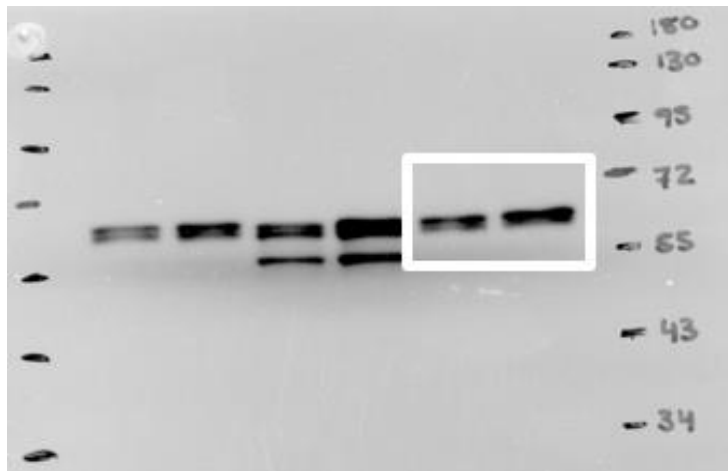
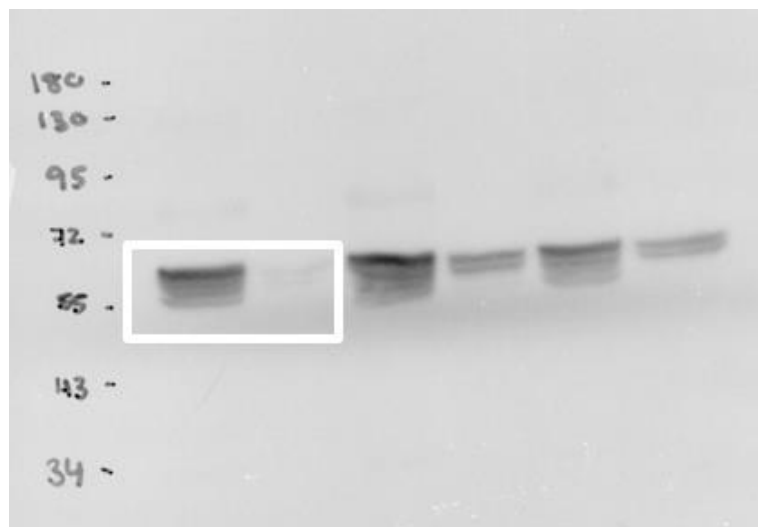
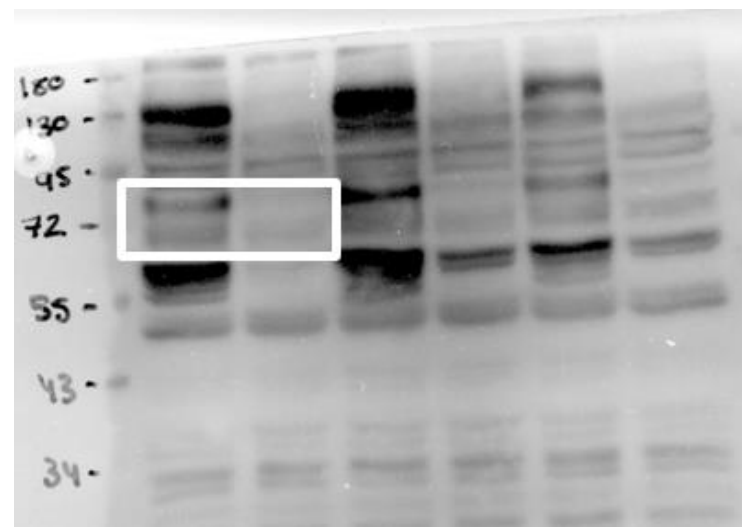


Figure S10. Full-length images of the cropped blots presented in main figure 2D Src inhibition (PY-Src, PY-YAP and actin).

PY-Src



PY-YAP



Actin

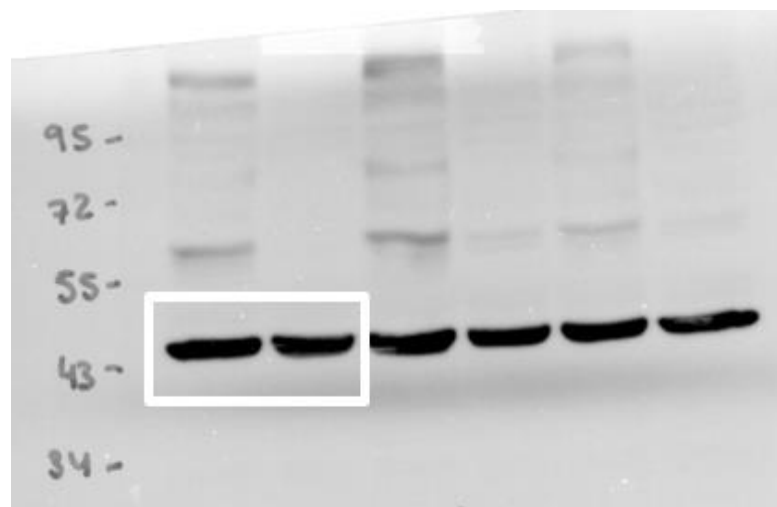
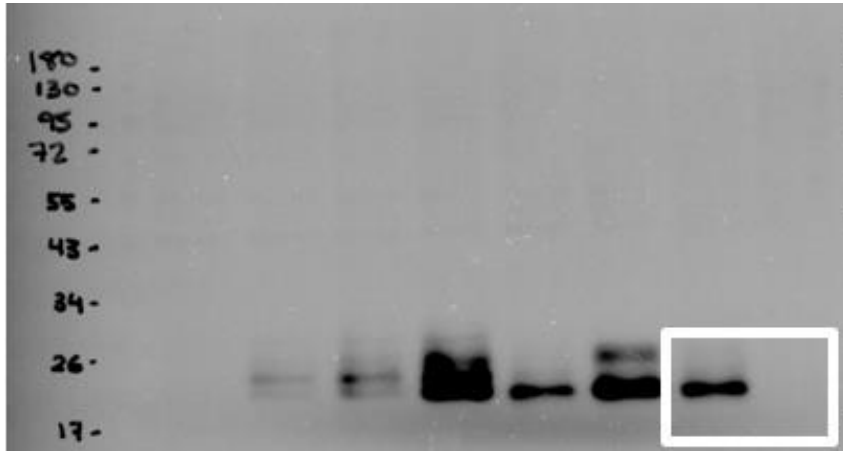


Figure S11. Full-length images of the cropped blots presented in main figure 2D Src inhibition (IL6 and actin).

IL6



Actin

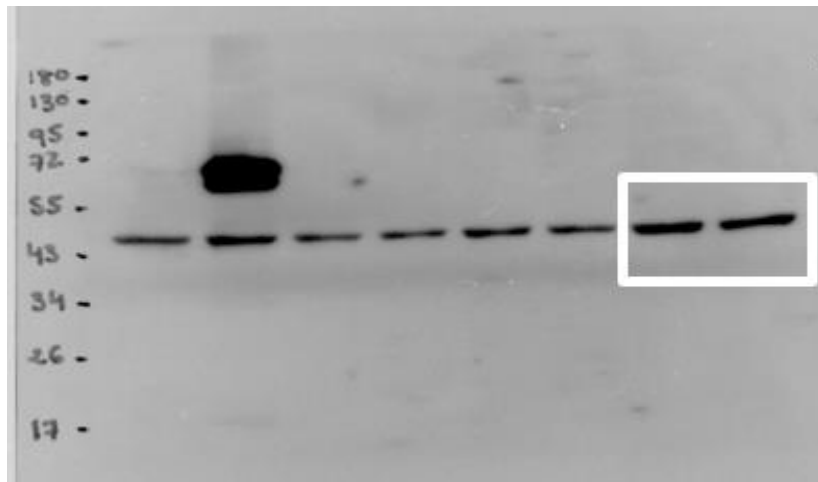
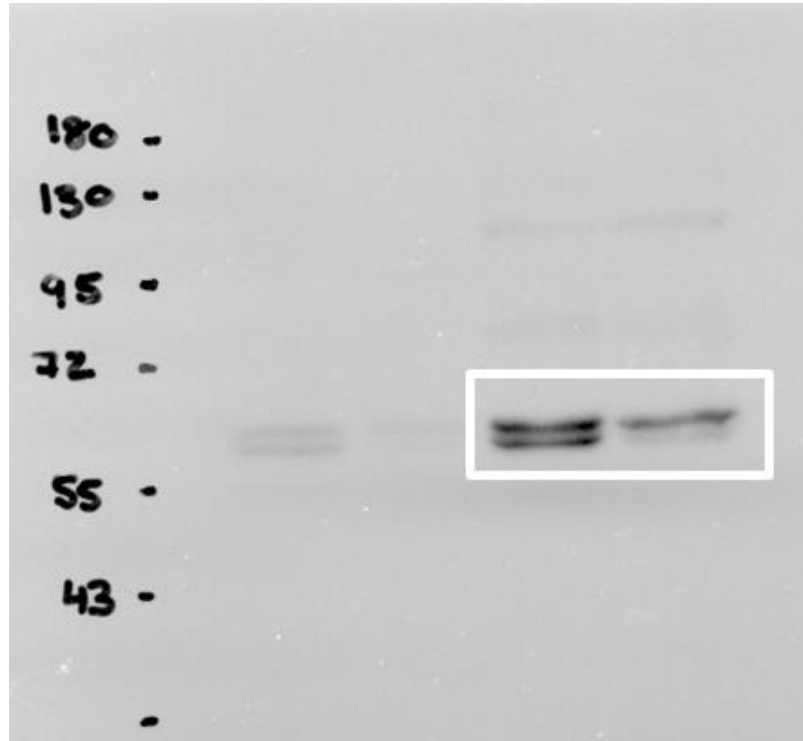
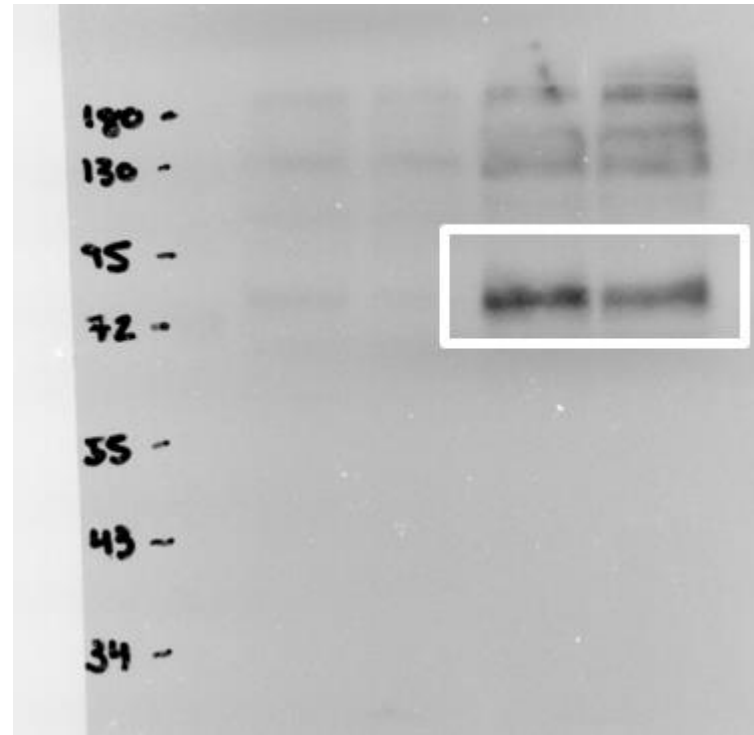


Figure S12. Full-length images of the cropped blots presented in main figure 2D Src interference (PY-Src and PY-YAP and actin).

Src



YAP



Actin

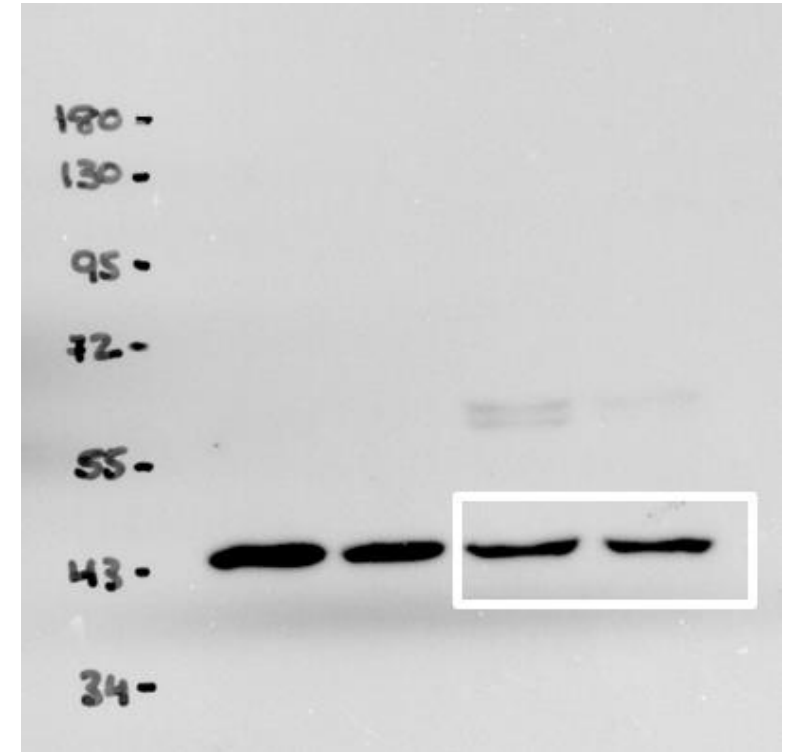
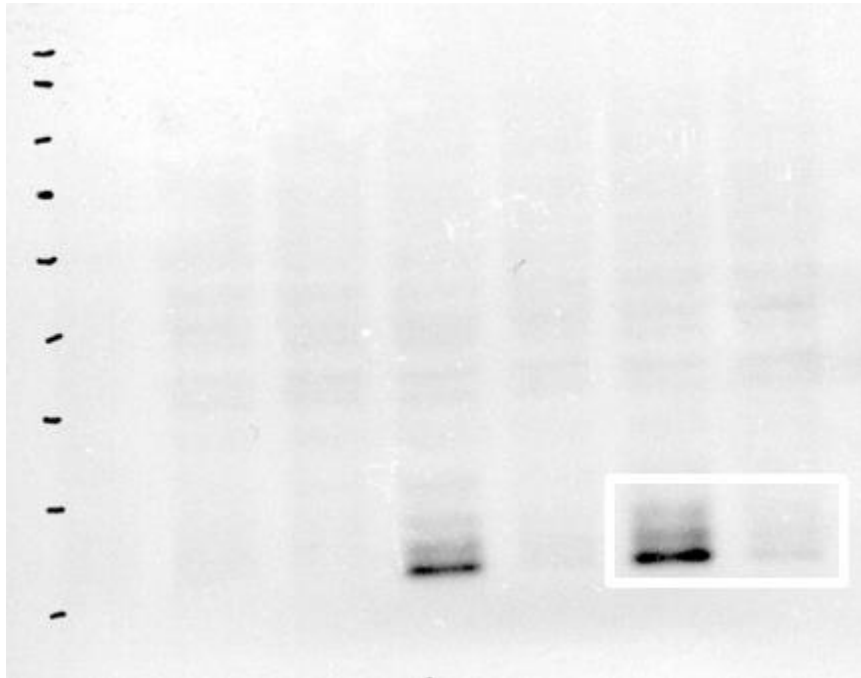


Figure S13. Full-length images of the cropped blots presented in main figure 2D Src interference (IL6 and actin).

IL-6



Actin

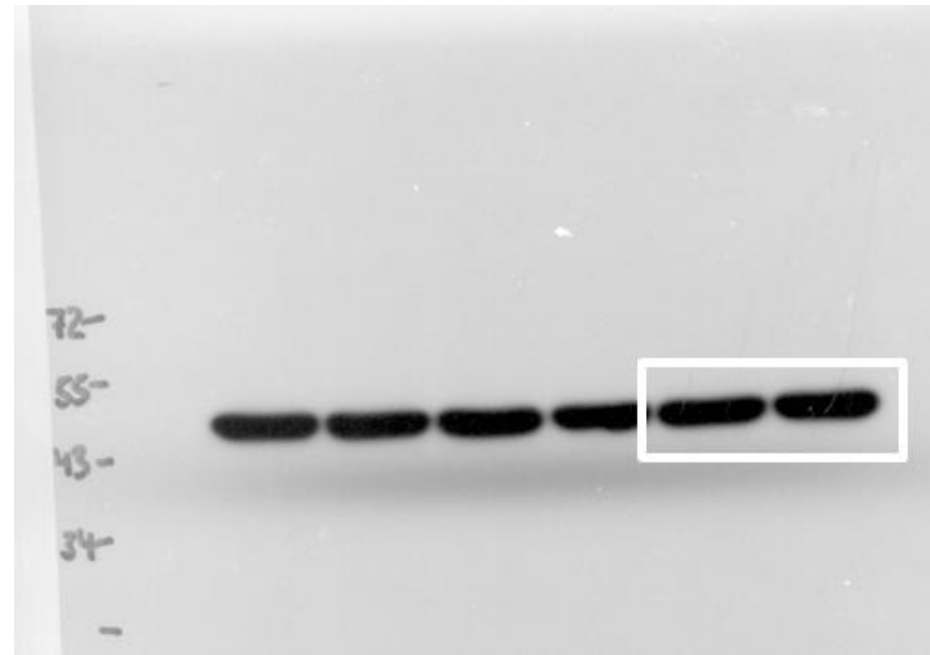
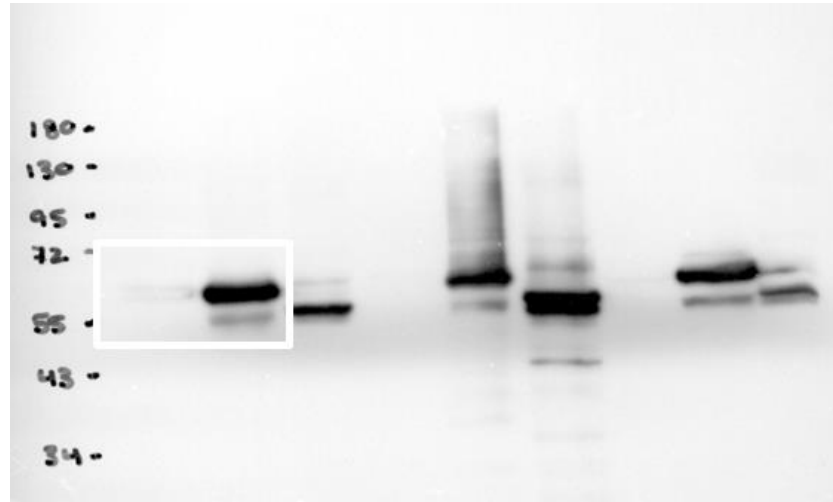
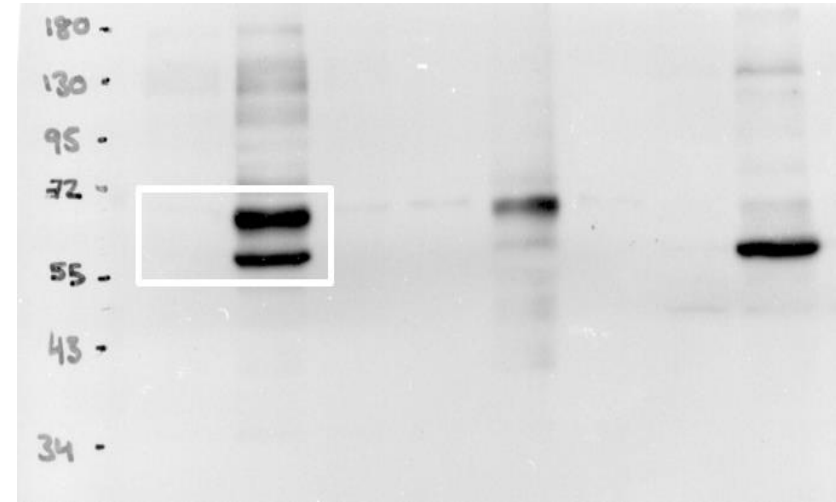


Figure S14. Full-length images of the cropped blots presented in main figure 2D Src transfection (PY-Src, PY-YAP and actin).

PY-Src



PY-YAP



Actin

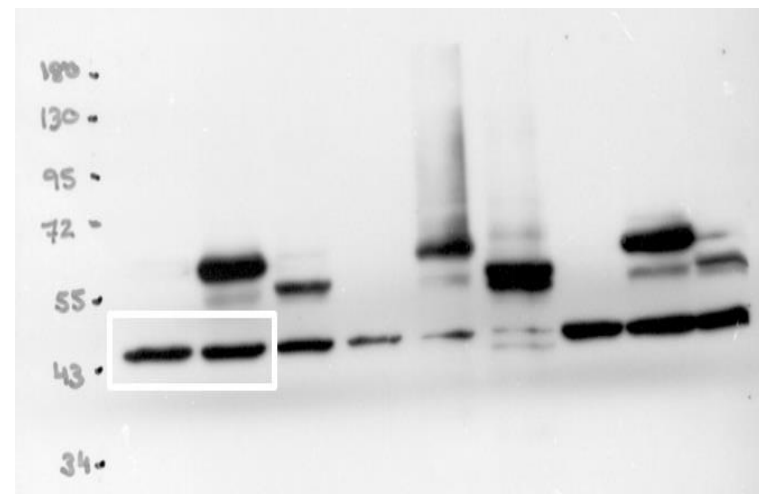
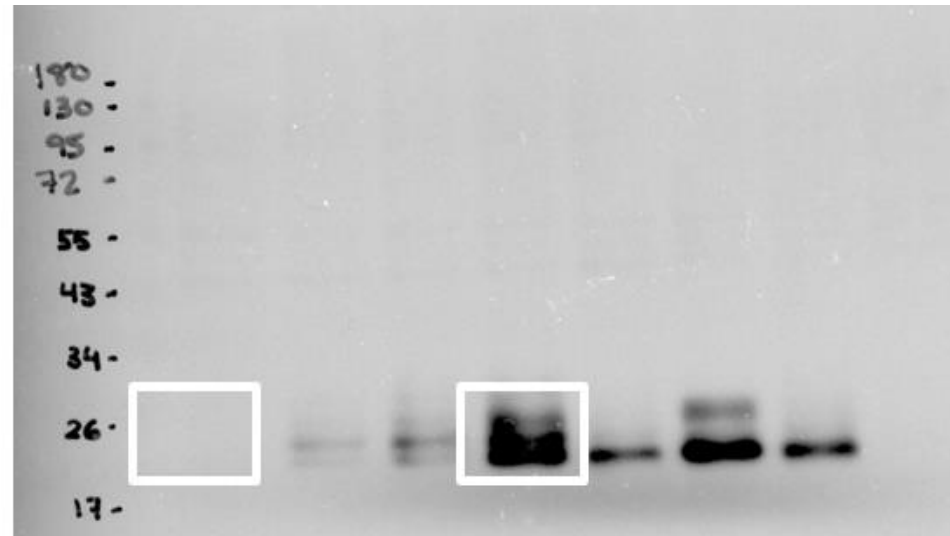


Figure S15. Full-length images of the cropped blots presented in main figure 2D Src transfection (IL6 and actin).

IL6



Actin

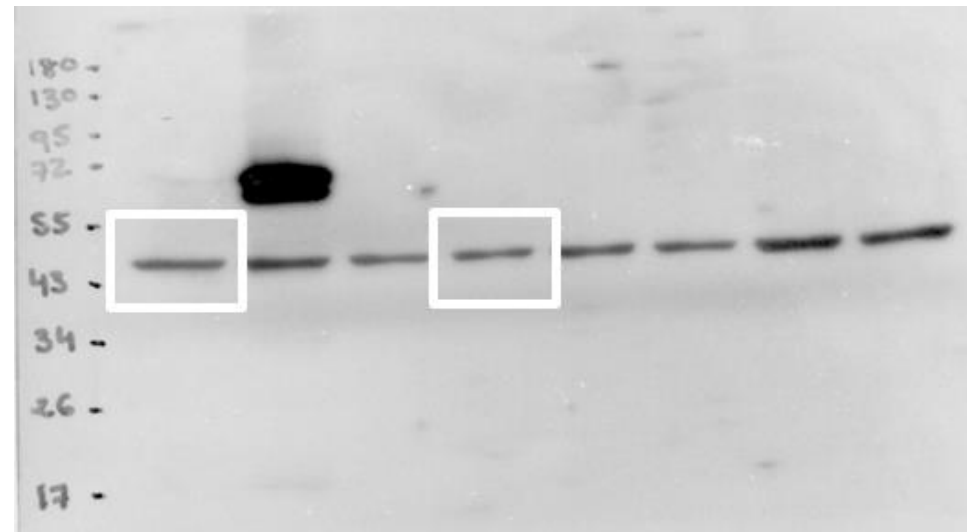
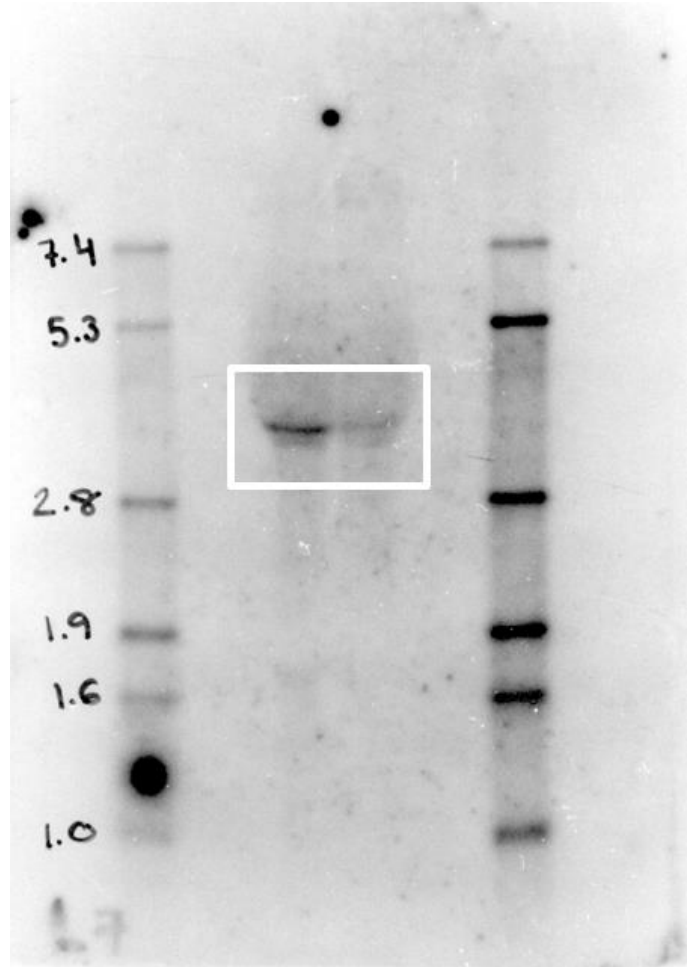


Figure S16. Full-length images of the cropped blots presented in main figure 3E

i21VEGFR1 mRNA



Actin mRNA

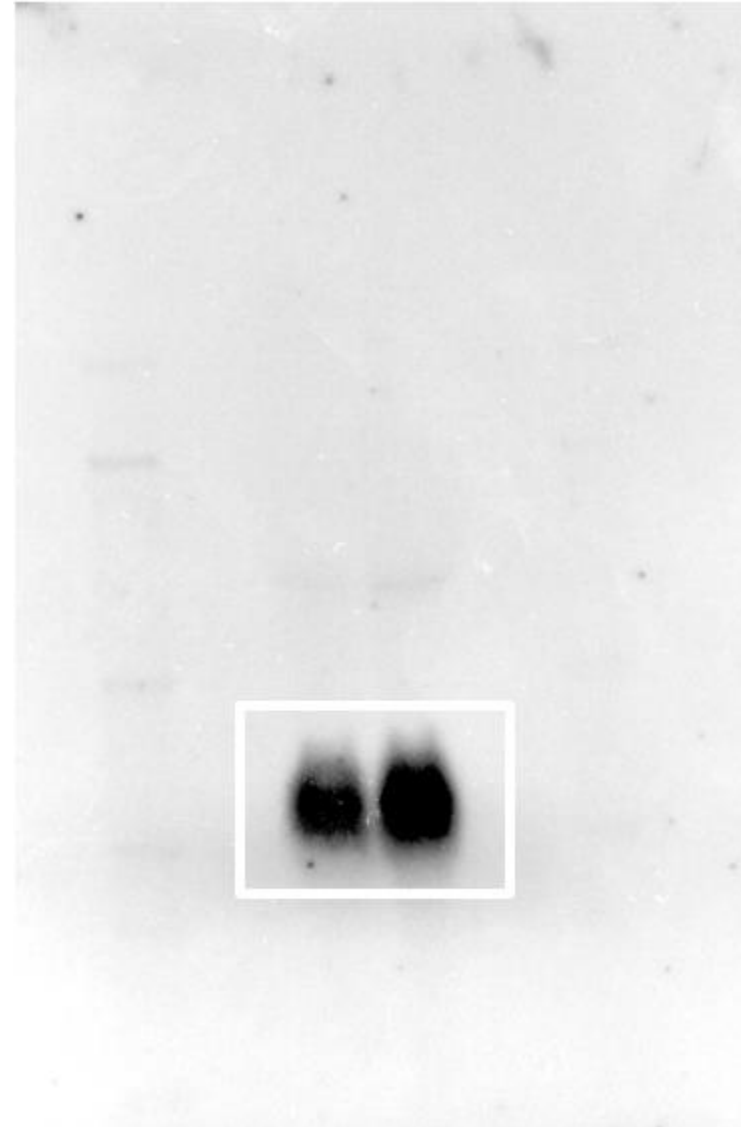
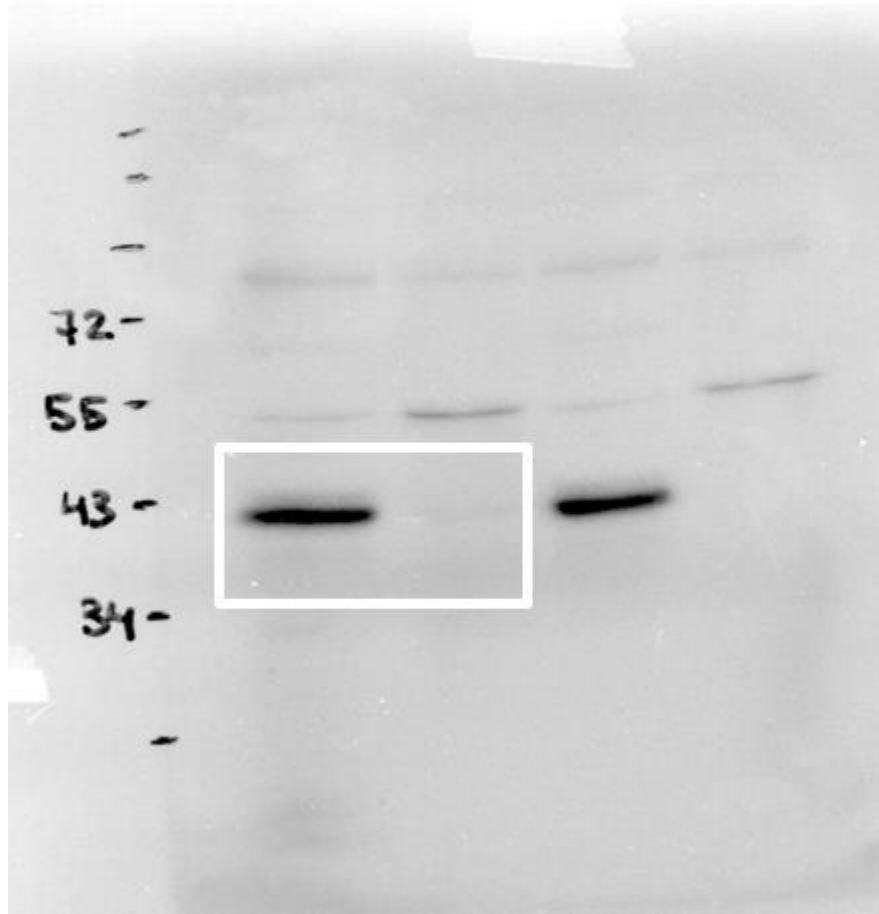


Figure S17. Full-length images of the cropped blots presented in main figure 3E

i21VEGFR1 protein



Actin protein

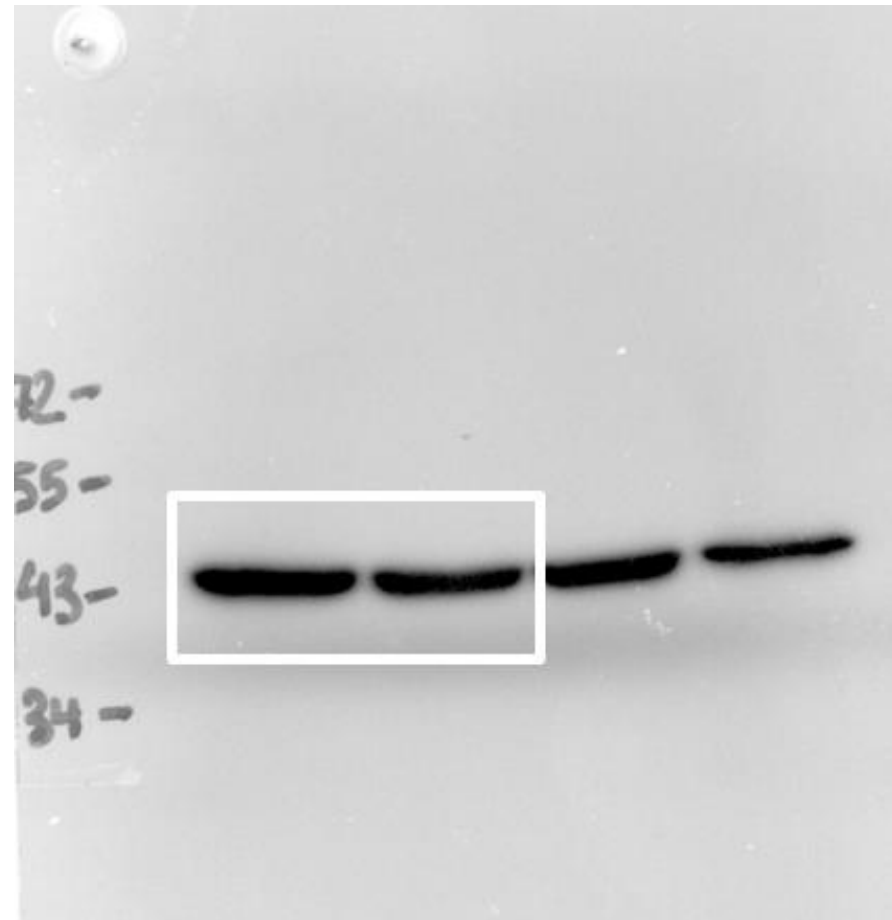
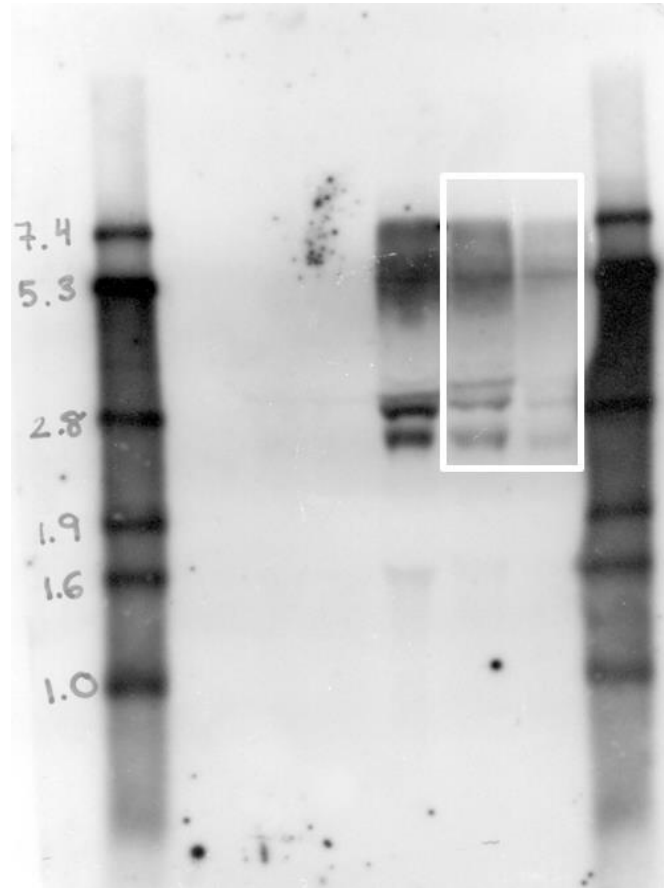


Figure S18. Full-length images of the cropped blots presented in main figure 3E

VEGFR1 mRNA



Actin mRNA

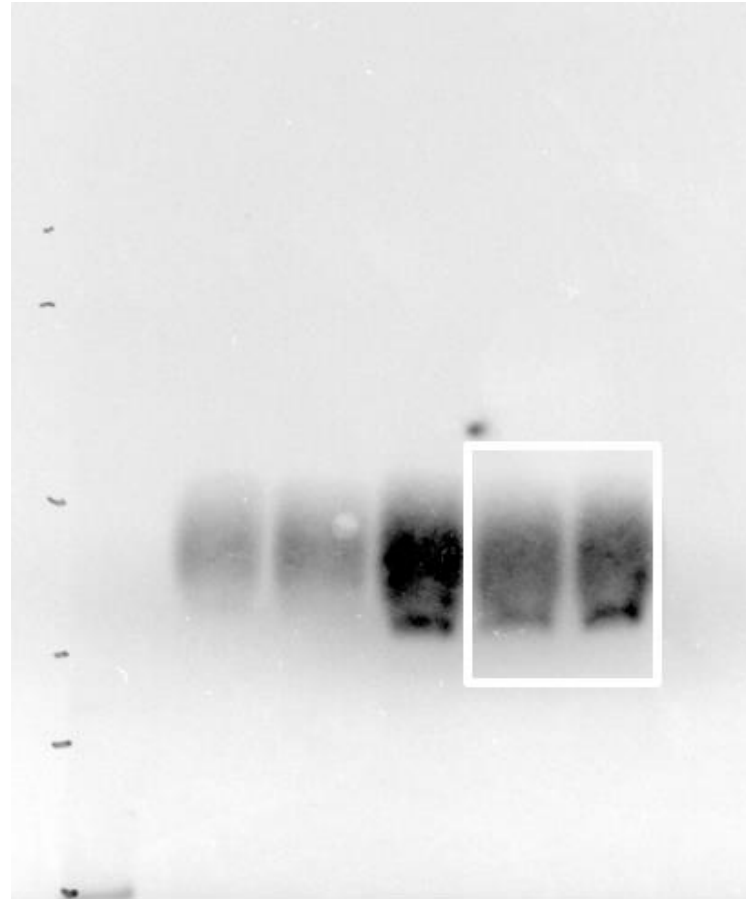
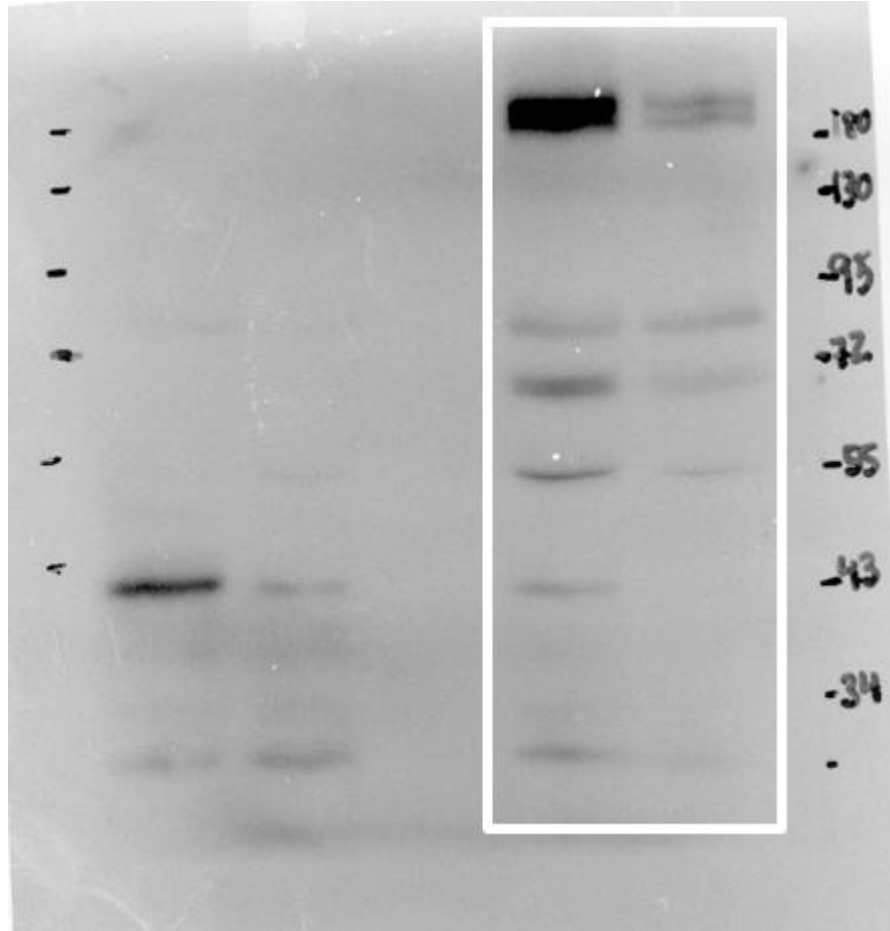


Figure S19. Full-length images of the cropped blots presented in main figure 3E

VEGFR1 proteins



Actin protein

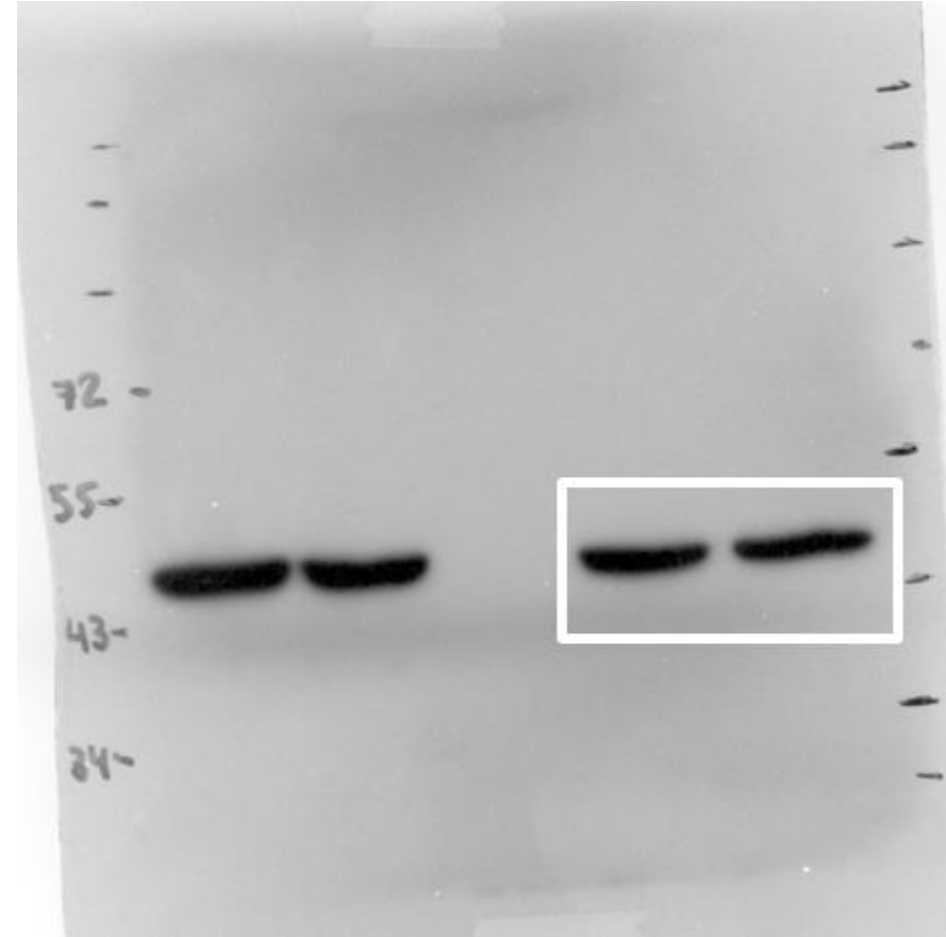
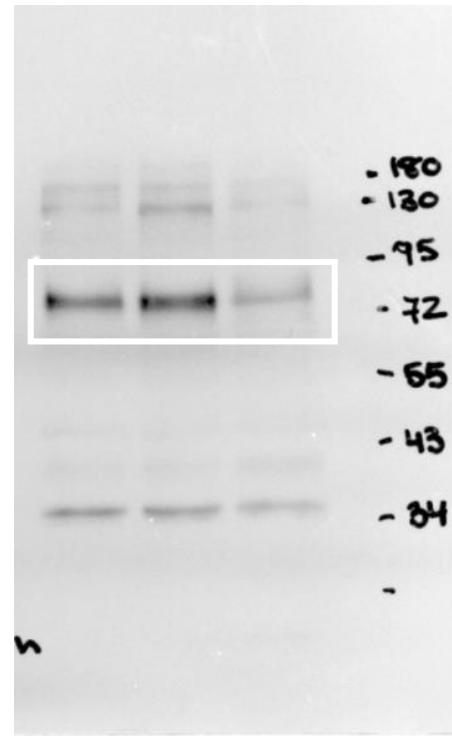
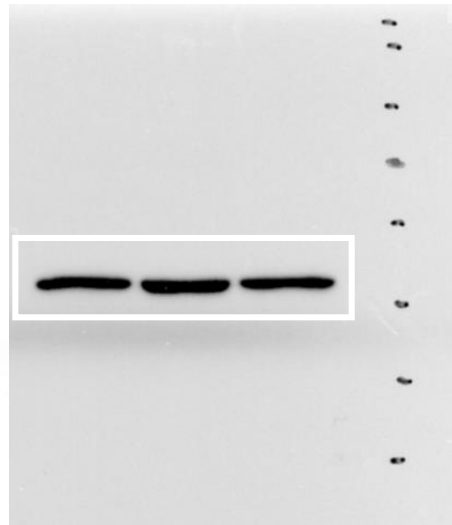


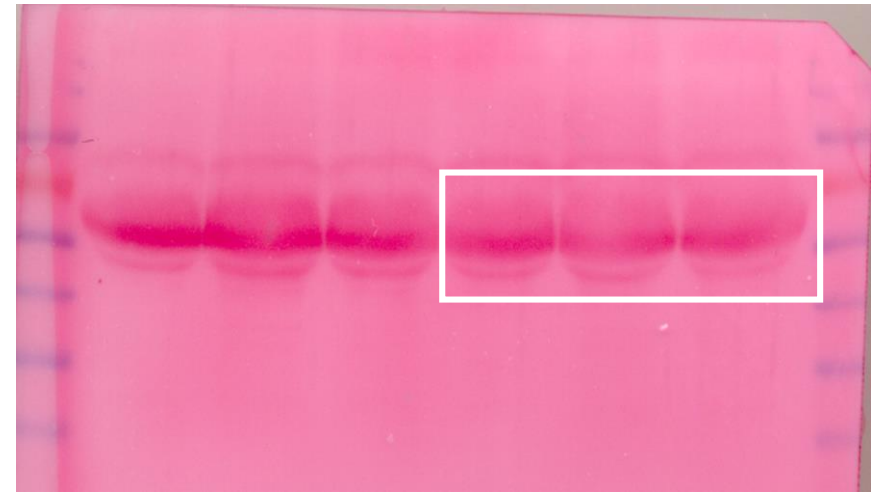
Figure S20. Full-length images of the cropped blots presented in main figure 4A



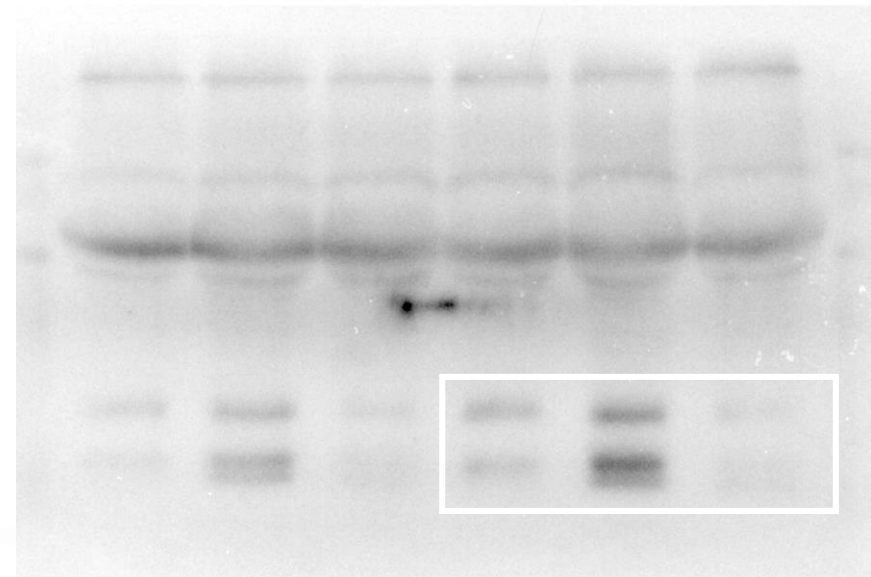
PY-YAP



β -Actin

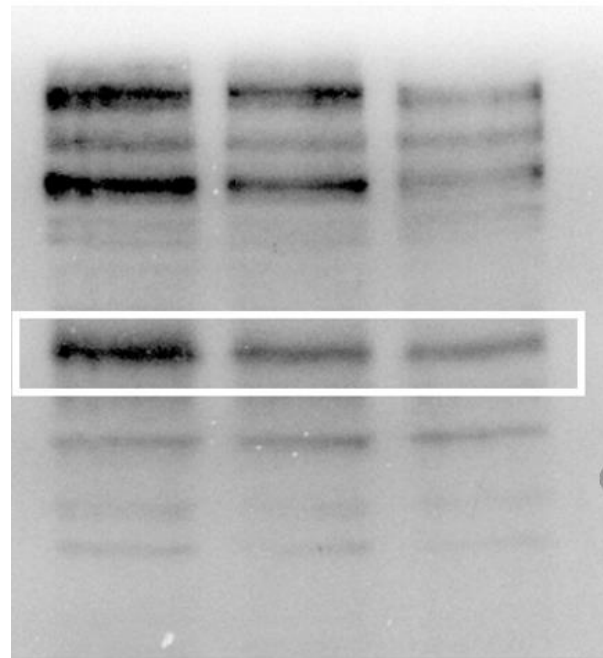


Ponceau

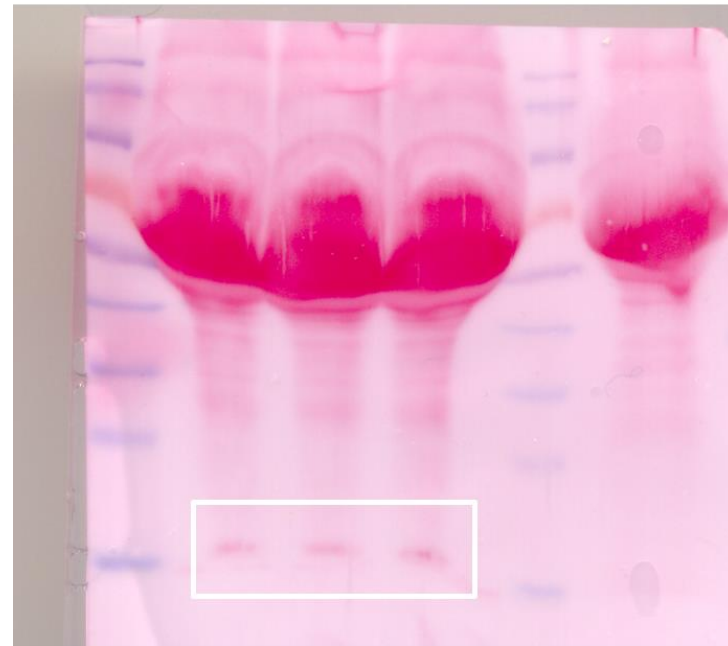


Interleukin 6

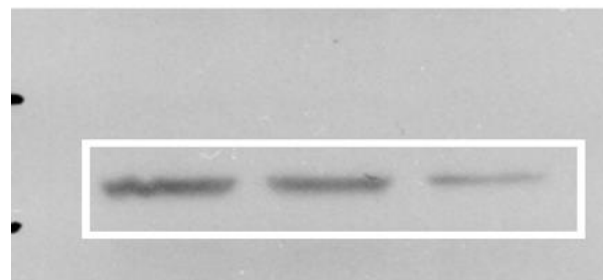
Figure S21. Full-length images of the cropped blots presented in main figure 4B



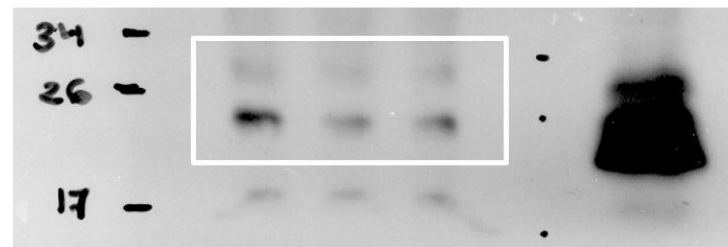
PY-YAP



Ponceau



β -Actin



Interleukin 6