

## Supplementary Information

### Propranolol sensitizes prostate cancer cells to glucose metabolism inhibition and prevents cancer progression.

**Authors:** Laura Brohée<sup>1</sup>, Olivier Peulen<sup>2</sup>, Betty Nusgens<sup>1</sup>, Vincent Castronovo<sup>2</sup>, Marc Thiry<sup>3</sup>, Alain C. Colige<sup>1</sup> and Christophe F. Deroanne<sup>1</sup>

### Uncropped blots

Figure 1(a) upper left

LC3

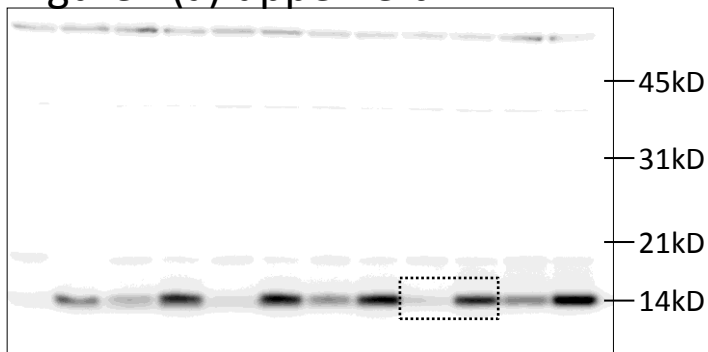


Figure 1(a) upper left

Erk1/2

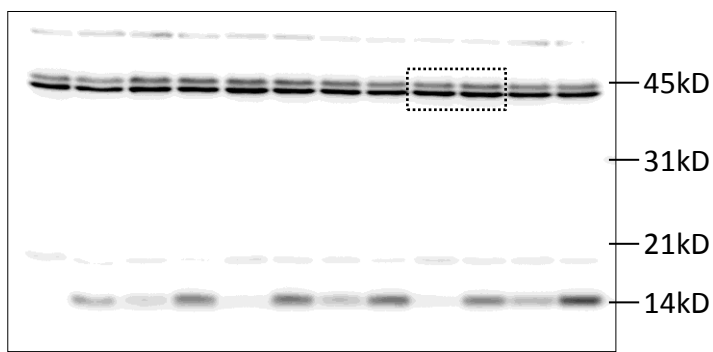


Figure 1(a) lower left

p62

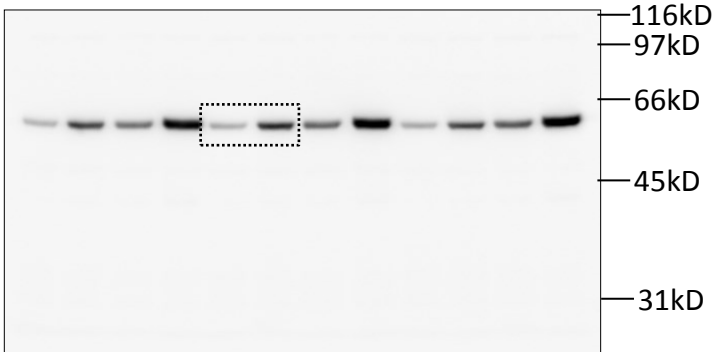


Figure 1(a) lower left

Erk1/2

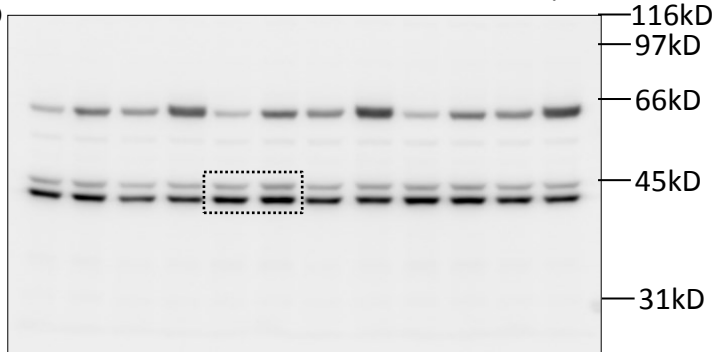


Figure 1(a) upper right

LC3

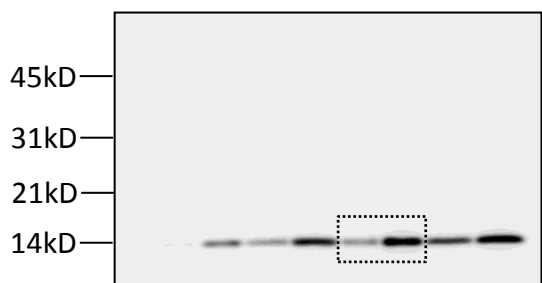


Figure 1(a) upper right

Erk1/2

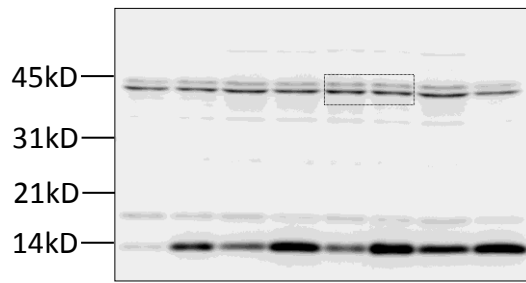


Figure 1(a) lower right

p62

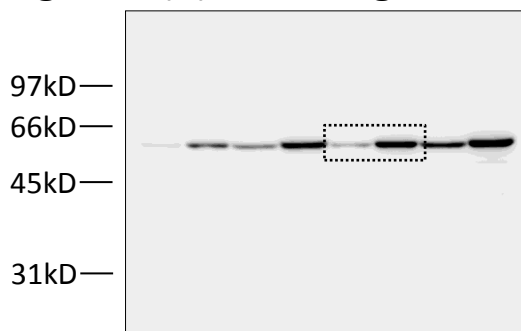


Figure 1(a) lower right

Erk1/2

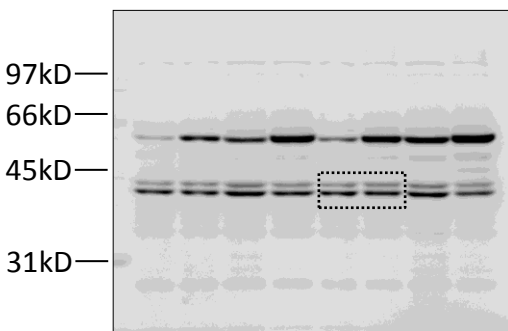


Figure 2(a) upper LC3

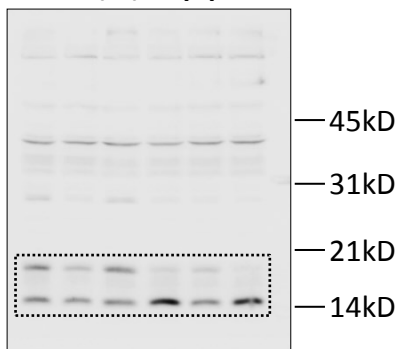


Figure 2(a) upper Erk1/2

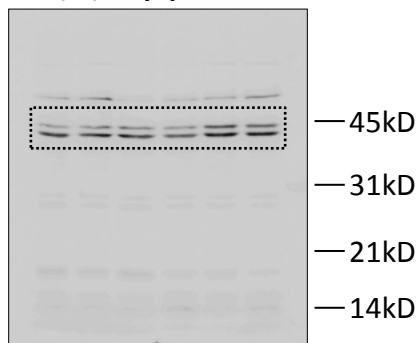


Figure 2(a) lower p62

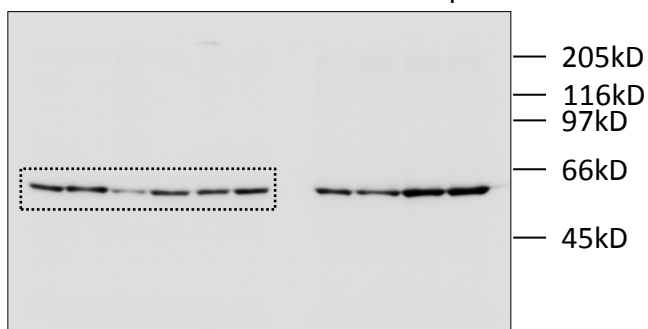


Figure 2(a) lower Erk1/2

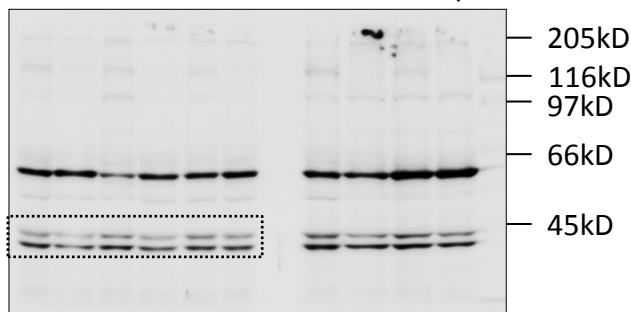


Figure 2(b) upper LC3

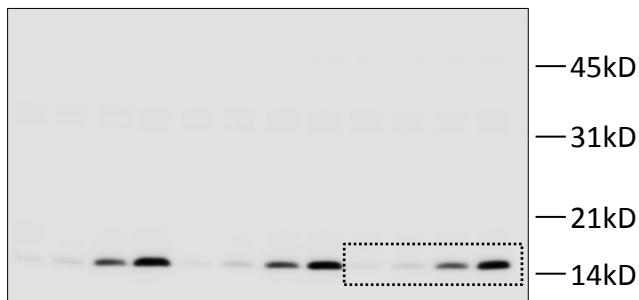


Figure 2(b) upper Erk1/2

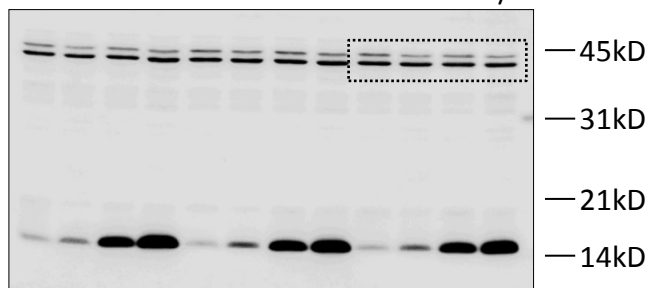


Figure 2(b) lower p62

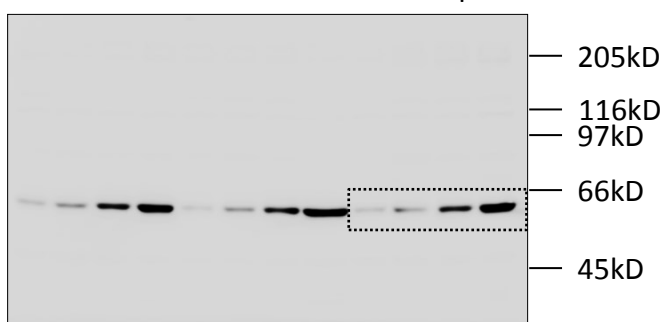


Figure 2(b) lower Erk1/2

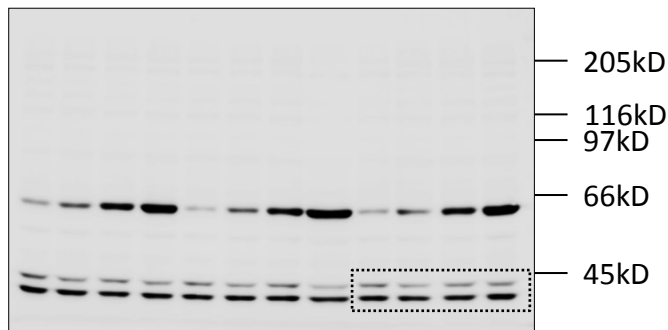
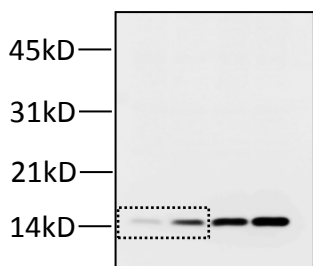


Figure 3(a) upper left

LC3 (24h)



Erk1/2 (24h)

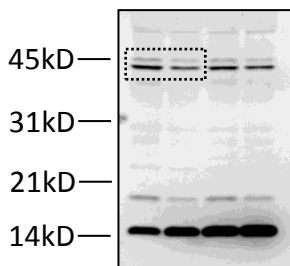
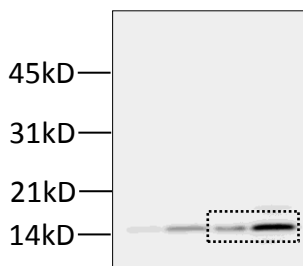


Figure 3(a) upper right

LC3 (48h)



Erk1/2 (48h)

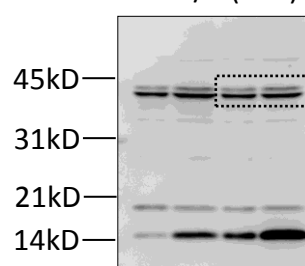
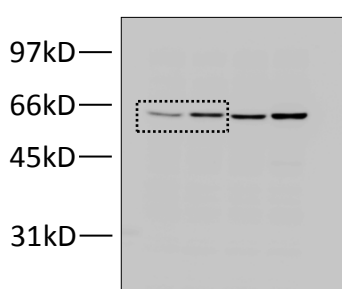


Figure 3(a) lower left

p62 (24h)



Erk1/2 (24h)

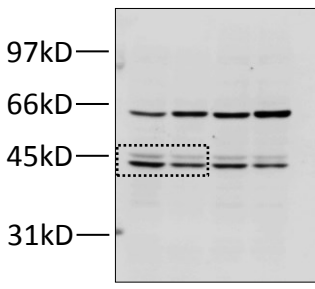
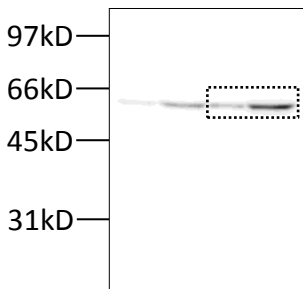


Figure 3(a) lower right

p62 (48h)



Erk1/2 (48h)

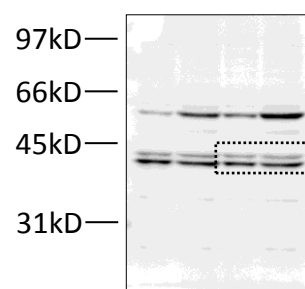


Figure 3(b) upper LC3

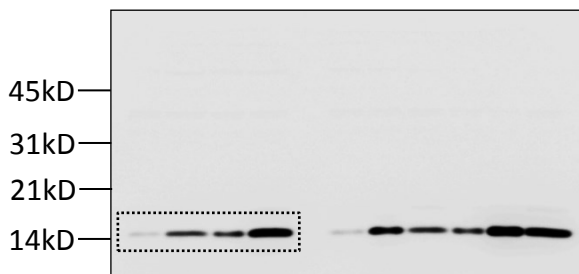


Figure 3(b) upper Erk1/2

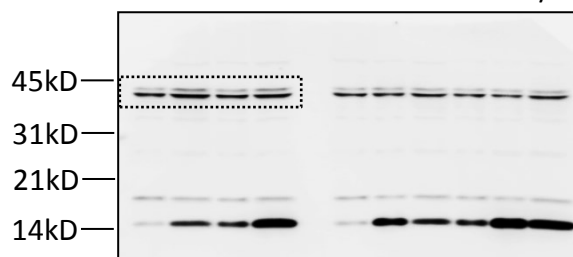


Figure 3(b) lower p62

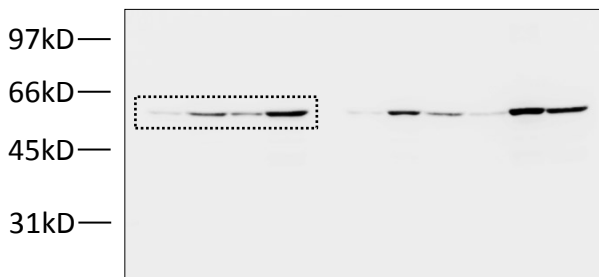


Figure 3(b) lower Erk1/2

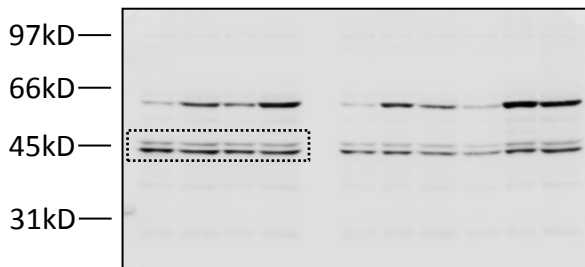


Figure 5(a) upper

LC3

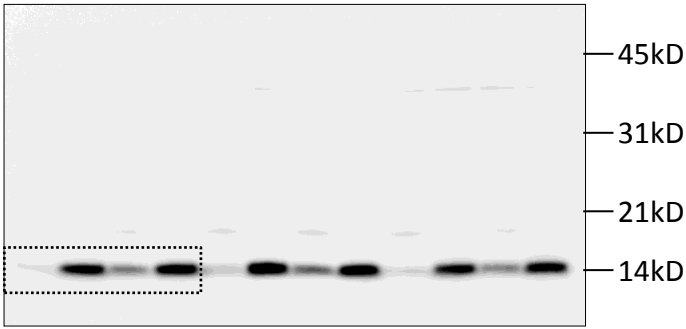


Figure 5(a) upper

Erk1/2

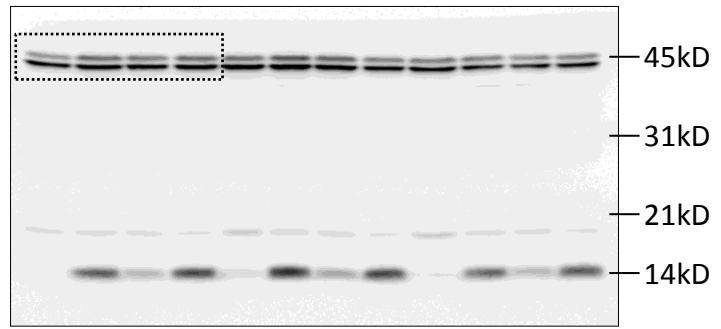


Figure 5(a) lower

p62

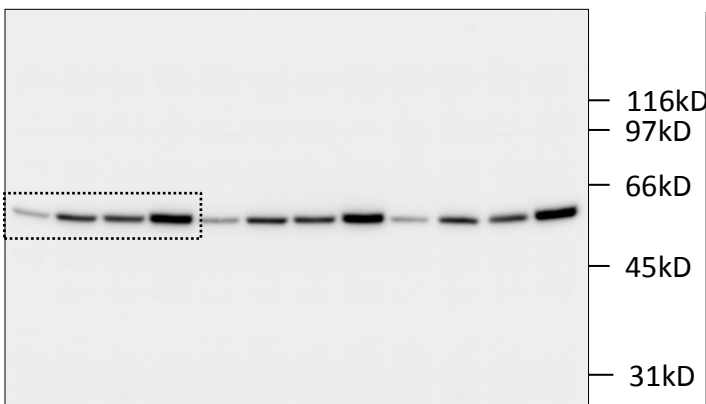


Figure 5(a) lower

Erk1/2

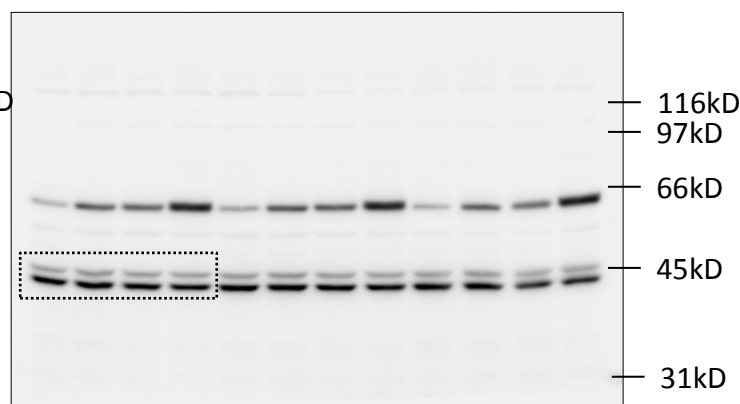


Figure 5(b) upper

LC3

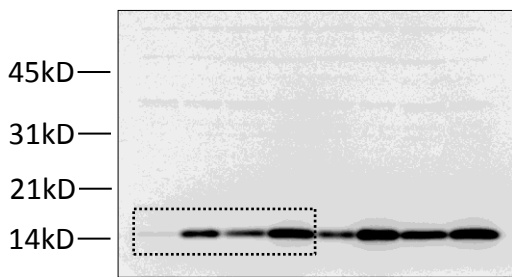


Figure 5(b) upper

Erk1/2

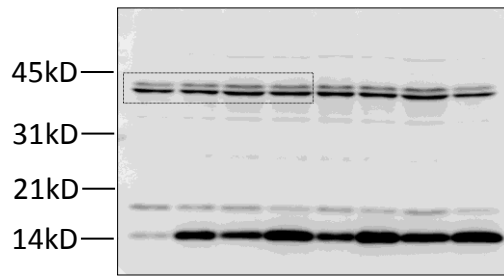


Figure 5(b) lower

p62

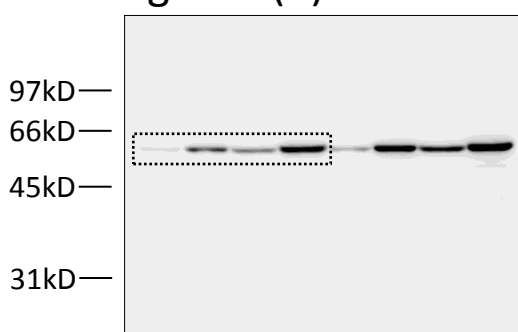


Figure 5(b) lower

Erk1/2

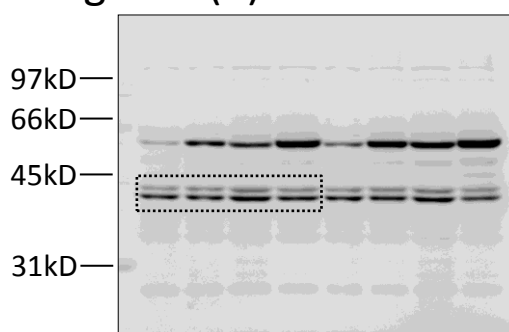


Figure 6(c)

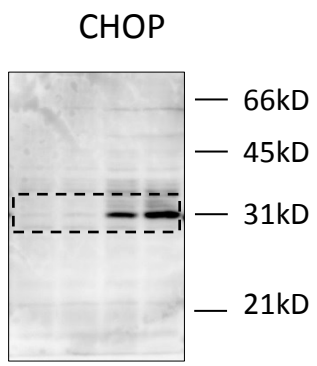


Figure 6(c)

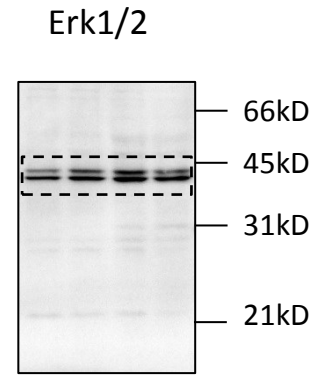


Figure 6(d)

GRP78

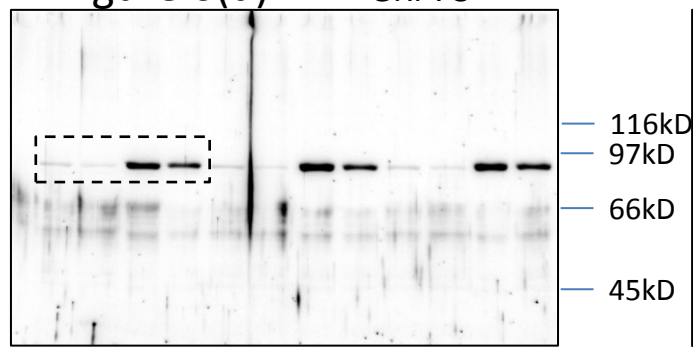


Figure 6(d)

Erk1/2

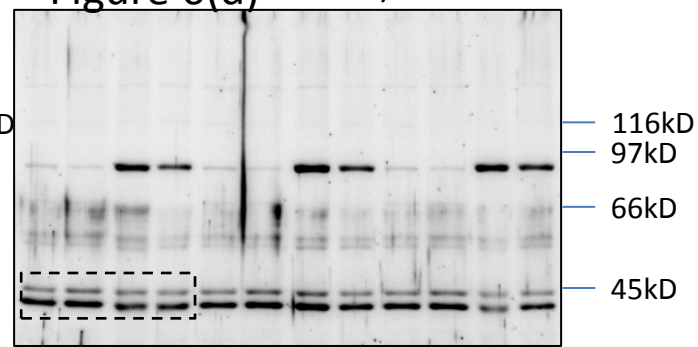


Figure 6(e)

CHOP

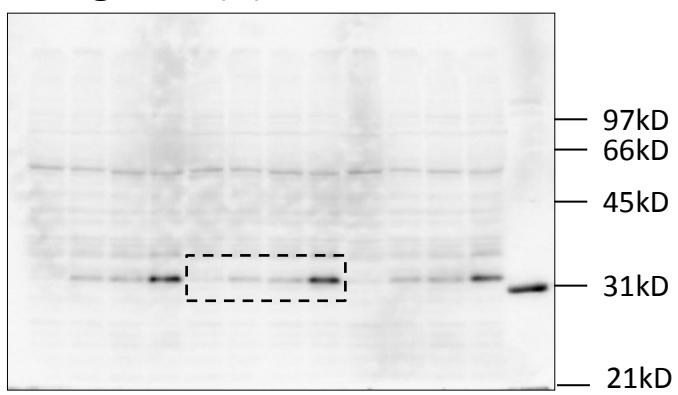


Figure 6(e)

Erk1/2

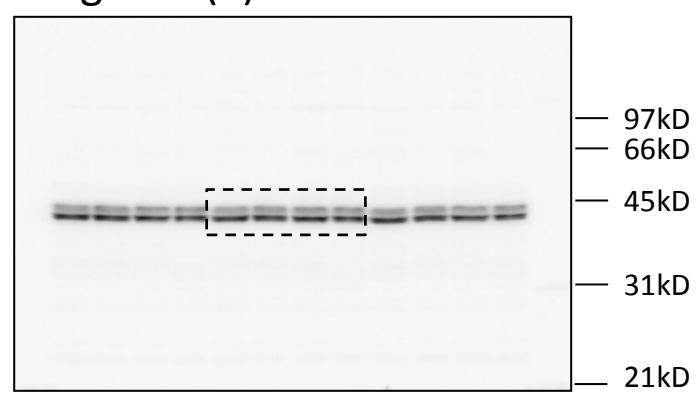


Figure 6(f)

GRP78

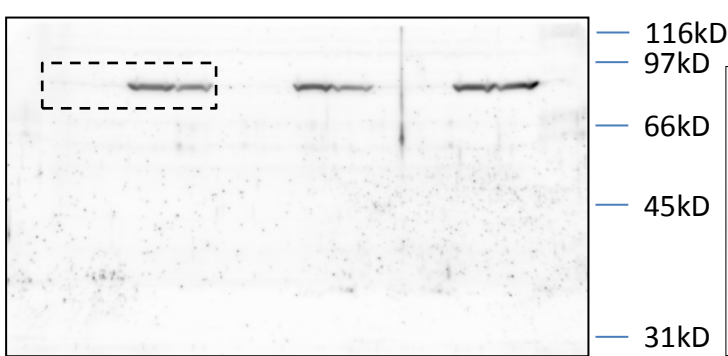


Figure 6(f)

Erk1/2

