

SUPPLEMENTARY FIGURES



Supplementary Figure 1a: Result planes obtained by applying mathematical algorithm 018330 to flow cytometry FITS files from normal Subjects

Supplementary Figure 1a: Contd...



Supplementary Figure 1a: Contd...

Supplementary Figure 1a: Contd...



Supplementary Figure 1a: Contd...



Supplementary Figure 1a: Contd...



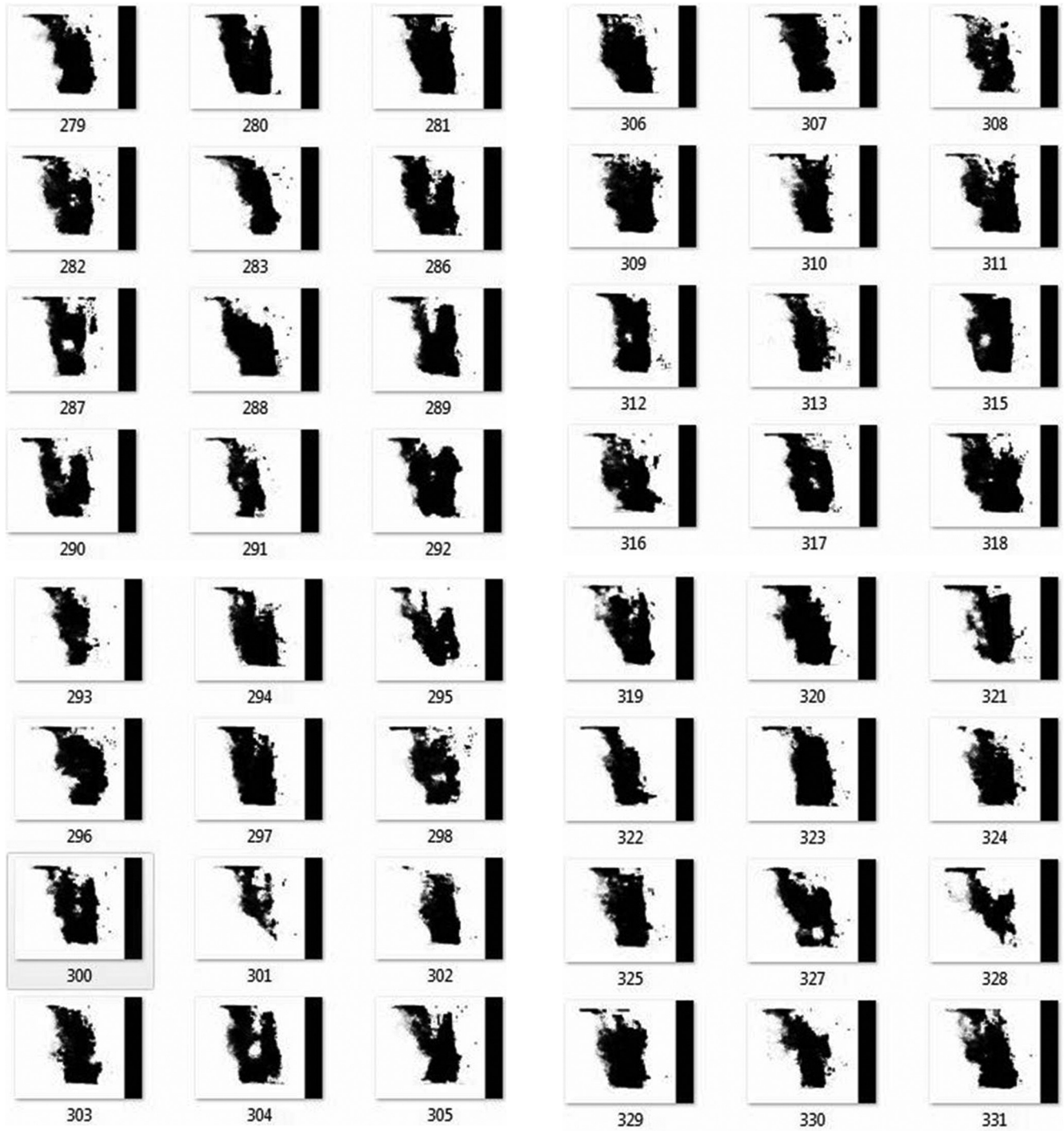
Supplementary Figure 1a: Contd...

Supplementary Figure 1a: Contd...



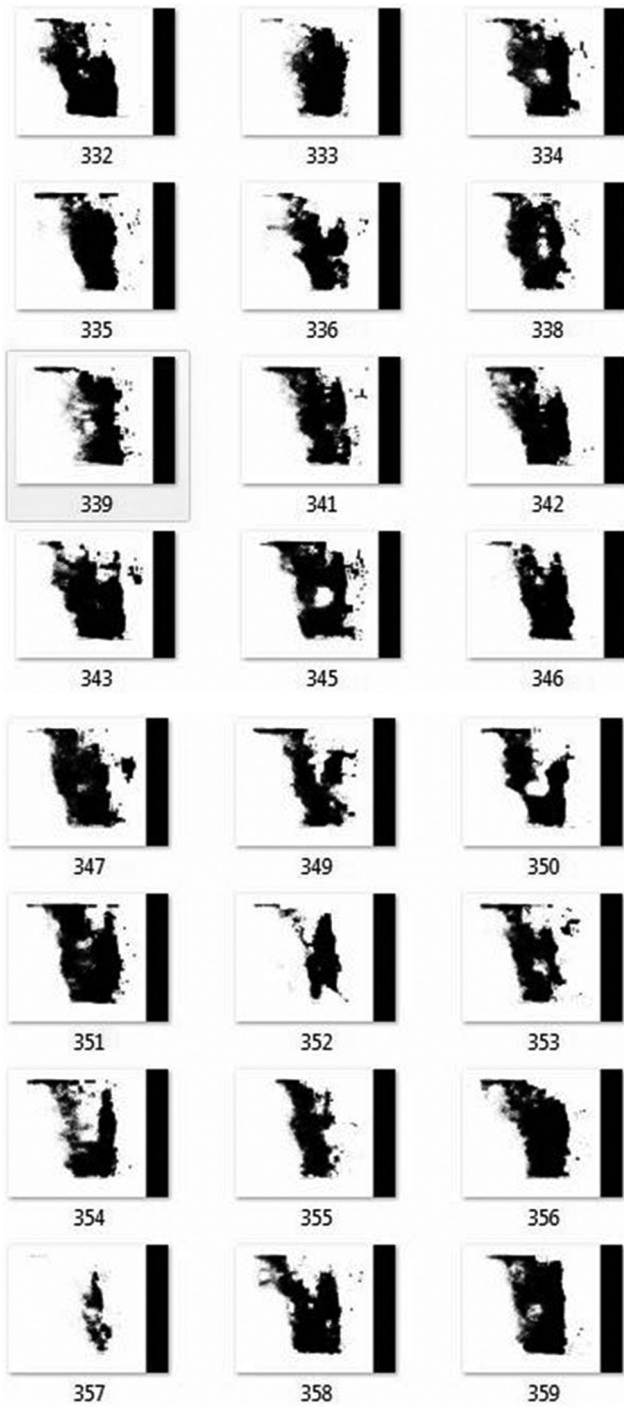
Supplementary Figure 1a: Contd...

Supplementary Figure 1a: Contd...

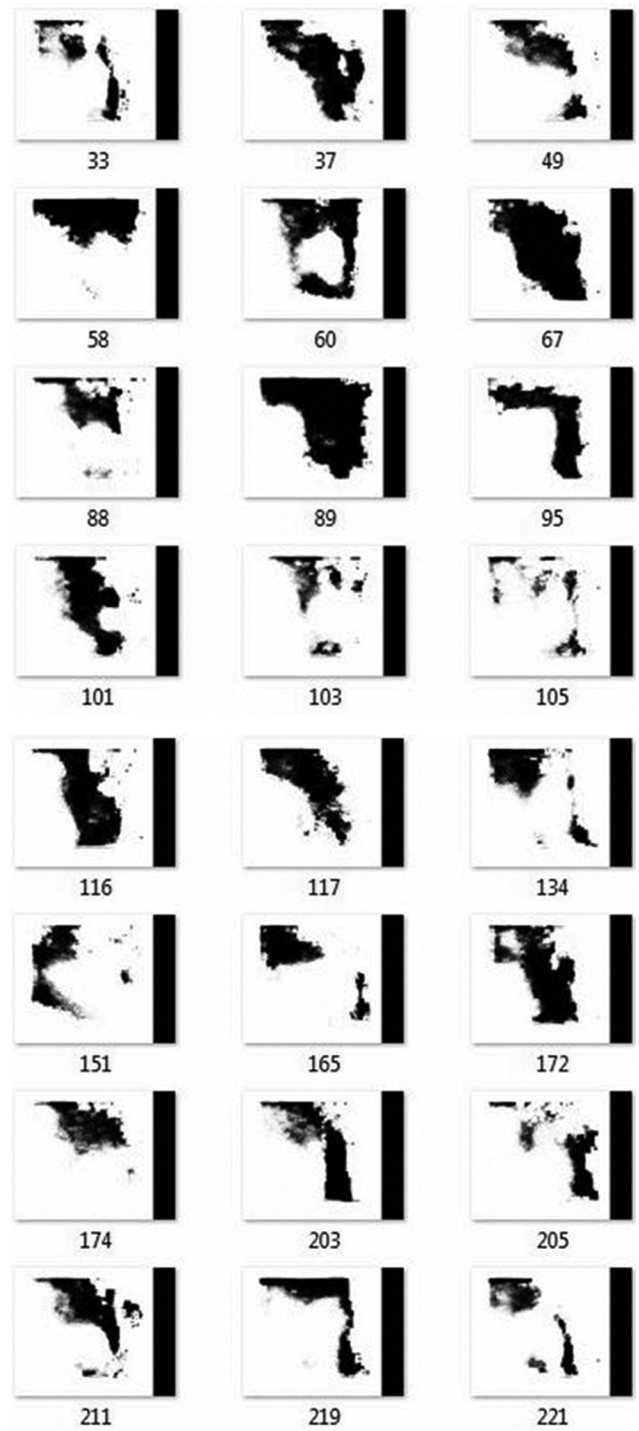


Supplementary Figure 1a: Contd...

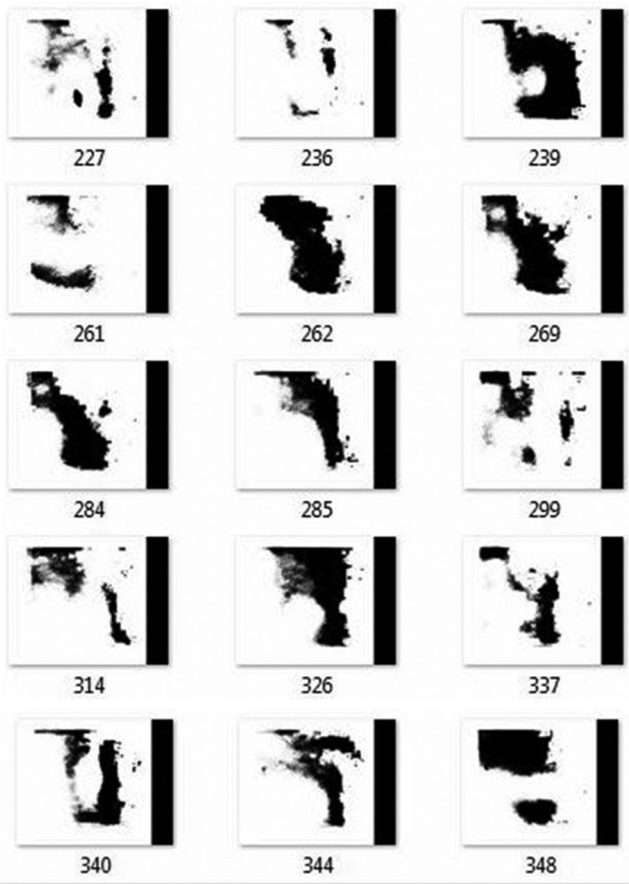
Supplementary Figure 1a: Contd...



Supplementary Figure 1a: Contd...



Supplementary Figure 1b: Result planes obtained by applying mathematical algorithm 018330 to flow cytometry FITS files from acute myeloid leukemia subjects



Supplementary Figure 1b: Contd...