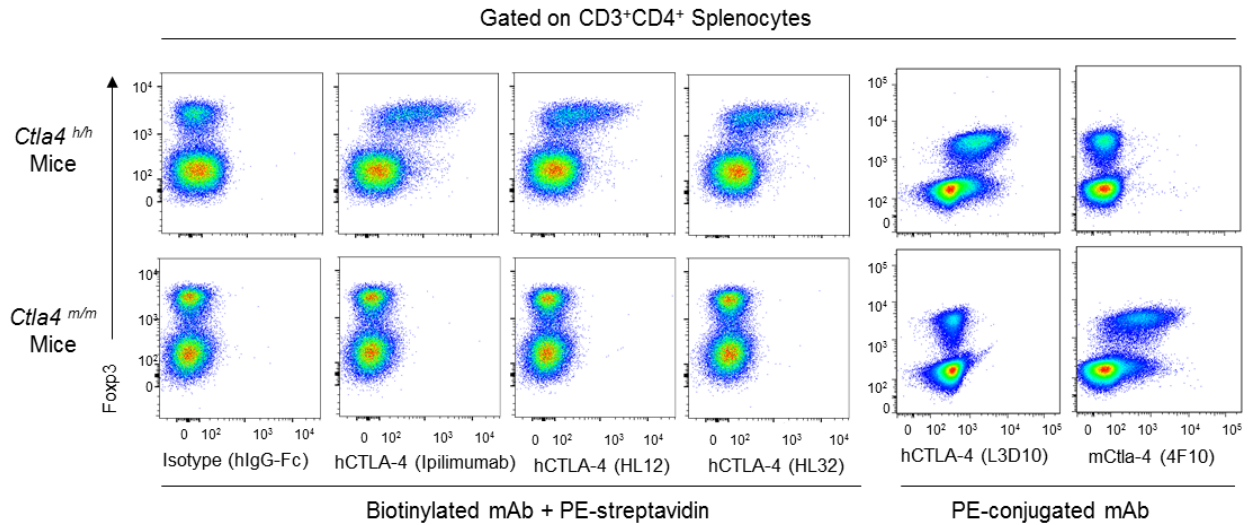


Figure S5



Supplementary information, Figure S5 L3D10, HL12, HL32 and Ipilimumab bind to human CTLA-4 but not mouse C*tla*-4. Data shown are dot plots of intracellular staining of CTLA-4 among gated CD3⁺CD4⁺ cells, using spleen cells from *Ctla4*^{hh/hh} (top) or *Ctla4*^{m/m} (bottom) mice. Anti-mouse C*tla*-4 mAb 4F10 (BD Biosciences) was used as control. Anti-CD3 (clone 145-2C11), CD4 (clone RM4-5), Foxp3 (clone FJK-16s) mAbs and Foxp3 staining buffer were purchased from eBioscience.