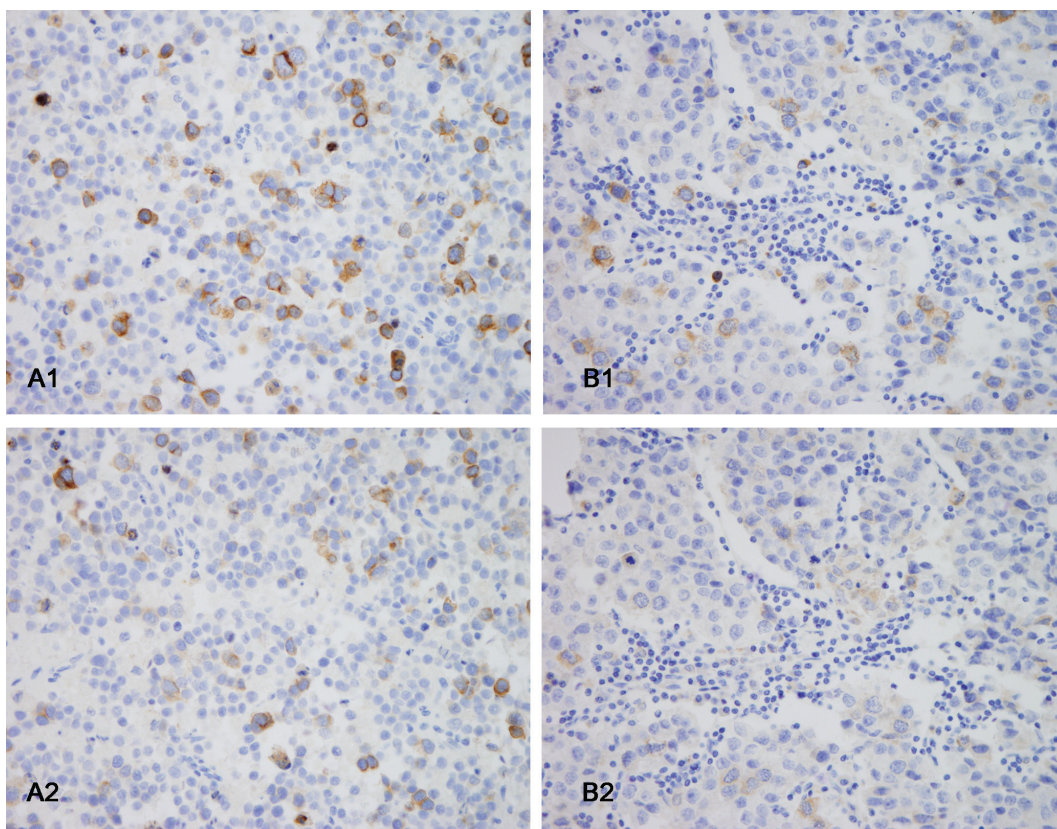


Immunohistochemical analysis of RHAMM expression in normal and neoplastic human tissues: a cell cycle protein with distinctive expression in mitotic cells and testicular germ cells

SUPPLEMENTARY MATERIALS



Supplementary Figure 1: The staining using the EPR4054 RHAMM antibody against N-terminus (Abcam, Cambridge, MA) did not show additional RHAMM-positive cells and had a lower percentage of RHAMM-positive cells in tumors than that using the EPR4055 RHAMM antibody. Upper panel, EPR4055 staining on a spermatocytic tumor (A1) and a seminoma (B1); Lower panel, EPR4054 staining on the same spermatocytic tumor (A2) and seminoma (B2).