

BMJ Open

BMJ Open is committed to open peer review. As part of this commitment we make the peer review history of every article we publish publicly available.

When an article is published we post the peer reviewers' comments and the authors' responses online. We also post the versions of the paper that were used during peer review. These are the versions that the peer review comments apply to.

The versions of the paper that follow are the versions that were submitted during the peer review process. They are not the versions of record or the final published versions. They should not be cited or distributed as the published version of this manuscript.

BMJ Open is an open access journal and the full, final, typeset and author-corrected version of record of the manuscript is available on our site with no access controls, subscription charges or pay-per-view fees (<http://bmjopen.bmj.com>).

If you have any questions on BMJ Open's open peer review process please email info.bmjopen@bmj.com

BMJ Open

Protocol for a randomised controlled trial to evaluate the effectiveness of the 'care for stroke' intervention in India; a smartphone-enabled, carer-supported, educational intervention for management of disabilities following stroke

Journal:	<i>BMJ Open</i>
Manuscript ID	bmjopen-2017-020098
Article Type:	Protocol
Date Submitted by the Author:	13-Oct-2017
Complete List of Authors:	Sureshkumar, K; Public Health Foundation of India, SACDIR; London School of Hygiene and Tropical Medicine, International Center for Evidence in Disability Murthy, GVS; MBBS, MD (Community Medicine) and MSc (Community Eye Health), Director, IIPH Hyderabad. Kuper, Hannah; The London School of Hygiene & Tropical Medicine, Clinical Research
Keywords:	Clinical trials < THERAPEUTICS, Stroke < NEUROLOGY, Disability, mHealth, REHABILITATION MEDICINE

SCHOLARONE™
Manuscripts

1
2
3 **Protocol for a randomised controlled trial to evaluate the effectiveness of the 'care**
4 **for stroke' intervention in India; a smartphone-enabled, carer-supported,**
5 **educational intervention for management of disabilities following stroke**
6
7
8
9

10
11 K Sureshkumar¹, GVS Murthy², Hannah Kuper³
12

13
14 **Corresponding Author:**
15

16 Sureshkumar Kamalakannan
17

18 Indian Institute of Public Health - Hyderabad
19

20 Plot No: 1 ANV Arcade, Amar Cooperative Society
21

22 Kavuri Hills, Madhapur Hyderabad - 500081
23

24 Email: suresh.kumar@iiphh.org
25

26 Phone: +91 9676333412, +91 9840772381.
27
28
29

30 **Authors**
31

- 32
33 1. Public Health Foundation of India, Indian institute of Public Health - Hyderabad,
34 Plot 1 ANV Arcade, Amar Cooperative Society, Kavuri Hills, Madhapur,
35 Hyderabad, Telangana, 500081. suresh.kumar@iiphh.org
36
37
38 2. Public Health Foundation of India, Indian institute of Public Health - Hyderabad,
39 Plot 1 ANV Arcade, Amar Cooperative Society, Kavuri Hills, Madhapur,
40 Hyderabad, Telangana, 500081. murthy.gvs@iiphh.org
41
42
43 3. International centre for Evidence in Disability, Department of Clinical Research,
44 London School of Hygiene and Tropical Medicine, Keppel Street, London, WC1E
45 7HT. Hannah.Kuper@lshtm.ac.uk
46
47
48
49
50
51
52
53
54
55

Keywords

1. Clinical Trial
2. Stroke
3. Disability
4. Mhealth
5. Rehabilitation
6. Clinical effectiveness

Word Count: Manuscript: - 2613

Abstract:

Introduction: The increase in prevalence of stroke and stroke-related disability implies an overwhelming demand for rehabilitation services worldwide. This situation is especially true for country like India where the resources for rehabilitation are very limited. Recently, a smartphone-enabled carer-supported educational intervention for management of physical disabilities following stroke was developed in India. It was found feasible and acceptable in an Indian context. The intervention now needs to be evaluated for its clinical effectiveness through a randomized controlled trial.

Methods: This trial will be a multi-center, pragmatic, randomised, outcome assessor-blind, controlled trial to quantify the effectiveness of the Care for Stroke Intervention on reducing dependency in activities of daily living following stroke. A total of 320 adult stroke survivors who fulfil the eligibility criteria will be randomised to receive either 'Care for Stroke' intervention or standard treatment and will be followed up for six weeks.

Analysis: The main analyses will compare all those participants allocated to the 'Care for Stroke' intervention versus those allocated to the standard treatment group on an 'intention-to-treat' basis, irrespective of whether the participants received the

1
2
3 treatment allocated or not. Appropriate effect estimates with a measure of precision
4
5 (95% confidence interval) will be presented in results of the trial.
6
7
8
9

10 **Ethics and Dissemination:** The Indian Institute of Public Health-Hyderabad / Public
11
12 Health Foundation of India – Independent Institutional Ethics Committee; Peer
13
14 reviewed Publications.
15
16

17
18
19
20 **Registration Details:** Clinical Trial Registry of India CTRI/2017/07/009014.
21
22
23
24
25
26
27
28
29
30
31
32
33
34
35
36
37
38
39
40
41
42
43
44
45
46
47
48
49
50
51
52
53
54
55
56
57
58
59
60

Strengths and Limitations of the study:

1. The trial protocol is rigorously designed and hence the results are expected to be accurate.
2. The methods were pilot-tested previously and hence conduct of the trial will be highly scientific and feasible.
3. The funding is limited to an Early Career Fellowship hence much of the work will have to efficiently planned and implemented.
4. The intervention is complex and hence it will be challenging to identify the exact component that may influence the effectiveness.
5. The awareness about stroke rehabilitation is very poor in the context and hence recruitment of participants will be time consuming.

Introduction

Globally around 15 million people suffer from stroke each year and a quarter of them experience permanent disability¹. Much of this burden is borne by Low and Middle Income Countries (LMICs)². The increase in prevalence of stroke and stroke-related disability implies an overwhelming demand for rehabilitation services worldwide³. This situation is especially true for LMICs like India where the resources for rehabilitation are very limited³.

Stroke is one of the leading causes of death and disability in India. Given the paucity of data on stroke in India, a systematic review of population-based studies on stroke in India was conducted. Studies included in this review showed that the crude stroke prevalence during the past two decades in India ranged from 44.29/100,000 persons to 559/100,000 persons in different parts of the country⁴. During the past two decades, the cumulative incidence of stroke in India varied widely, from 105-152/100,000 person per year in different parts of the country⁴. These estimates on stroke incidence and prevalence are found to be higher than those reported from High Income Countries⁵. The growing burden of stroke-related disability and the unmet need for rehabilitation following stroke in India poses a major public health challenge.

1
2
3 Given this challenge, it is imperative to develop cost-effective multi-dimensional
4 stroke rehabilitation interventions to meet the demands of the stroke survivors. In
5
6 the absence of any organised stroke care services, and with the limited resources
7
8 available for rehabilitation, a comprehensive approach to address the growing
9
10 burden of stroke-related disability in India becomes pertinent⁶. This approach
11
12 could be pivotal in integrating various strategies for rehabilitation³ (Educational,
13
14 Community-based rehabilitation, digital technology, Self/Supported management
15
16 etc.). It could also be useful for targeting the full range of impacts of stroke,
17
18 including on impairments, activity limitations and participation restriction, as
19
20 outlined in the 'Biopsychosocial conceptualization of disability framework' for the
21
22 intervention, as proposed by the ICF⁷.
23
24
25
26
27
28
29
30
31
32

33 As a part of the author's doctoral study, a smartphone-enabled carer-supported
34
35 educational intervention was developed for the management of physical disabilities
36
37 following stroke in India⁸. This intervention was named as 'Care for Stroke'. It was
38
39 developed using the systematic approach to development and evaluation of complex
40
41 interventions, as recommended by the Medical Research Council (MRC) in the U.K. ⁹
42
43
44
45
46 ¹⁰. To the best of our knowledge, there is no other stroke rehabilitation intervention
47
48 enabled through mHealth platforms that are available and relevant to India.
49
50
51
52
53
54
55
56
57
58
59
60

1
2
3 Following development, the intervention was evaluated for its feasibility and
4
5 acceptability in an Indian context¹¹. The intervention includes information about
6
7 stroke and the ways to manage physical disability following stroke. It contains a
8
9 practical demonstration of functional post-stroke exercises to acquire the
10
11 functional abilities necessary to perform everyday tasks, adaptive techniques to
12
13 perform one's own daily activities independently and a specific section on
14
15 assistive devices that could enable participation of the stroke survivors in their
16
17 daily tasks⁸. Findings from the pilot-testing showed that the 'Care for Stroke'
18
19 intervention was feasible and acceptable in the Indian context¹¹. About 95% of the
20
21 stroke survivors and all the caregivers (100%) rated the intervention as "excellent",
22
23 based on it's a) overall credibility, b) feasibility and c) user-friendliness¹¹.
24
25
26
27
28
29
30
31
32

33 However, feasibility and acceptability alone will not be sufficient to inform
34
35 implementation and scalability¹⁰. Neither will it be enough in order to advocate for
36
37 change in policy towards implementation of an intervention¹². Therefore, as a next
38
39 step and as recommended by the MRC, the 'Care for Stroke' intervention needs to be
40
41 evaluated for its clinical and cost effectiveness in an Indian context through a
42
43 randomised controlled trial.
44
45
46
47
48
49
50
51
52
53
54
55
56
57
58
59
60

Objective:

To assess whether the 'Care for Stroke' intervention is effective for the reduction of dependency in activities of daily living among stroke survivors

Methods:**Overview**

This trial will be a pragmatic, randomised, outcome assessor-blinded trial to quantify the effectiveness of the Care for Stroke Intervention on reducing dependency in activities of daily living following stroke. A total of 320 adult stroke survivors who fulfil the eligibility criteria will be randomised to receive either 'Care for Stroke' intervention or standard treatment and will be followed for six weeks. The eligibility criteria will be based on uncertainty principle.

Pragmatic design and the uncertainty principle

The effectiveness of the intervention in actual everyday routine practice can be assessed using the pragmatic trial design. Until now, there is no evidence for effectiveness of stroke rehabilitation interventions that is unidisciplinary, led by a physician, neurologist or a physiotherapist alone. However, a physiotherapist or physician-driven unidisciplinary rehabilitation is what is commonly practiced in the context of stroke rehabilitation in India. Given the lack of evidence, there is a natural uncertainty among the health professionals involved in provision of stroke care

1
2
3 about what intervention could work best for the stroke survivors in an Indian
4
5 context. The eligibility for participant recruitment in the 'Care for Stroke
6
7 Intervention' trial will be based on this uncertainty principle. This approach to assess
8
9 participant eligibility is well established¹³.
10
11
12
13
14

15 **Setting**

16
17
18 Participants will be recruited using the details obtained by the Aarogyasri Trust,
19
20 which is a trust run by the State Ministry of Health and Family Welfare (MOHFW) to
21
22 provide insurance for people affected by various health conditions including stroke.
23
24 The intervention will be provided to the participants at home and they will be asked
25
26 to use the intervention in their home.
27
28
29
30
31
32

33 **Eligible Participants:**

34 **Inclusion Criteria**

- 35
- 36
- 37
- 38 • Adults (aged ≥ 18 years)
- 39
- 40
- 41 • Recent diagnosis of first-ever stroke as defined by the WHO¹⁴ (within 3-6
- 42
- 43 weeks prior to recruitment)
- 44
- 45
- 46 • All kinds of stroke severity (score 1 - 42, according to NIH stroke scale¹⁵⁻¹⁶)
- 47
- 48
- 49 • Stroke survivor medically stable (reaching a point in medical treatment where
- 50
- 51 life-threatening problems following stroke have been brought under control)
- 52
- 53
- 54
- 55
- 56
- 57
- 58
- 59
- 60

- Post-stroke functional status of the stroke survivor: requiring assistance of at least one person to perform daily activities such as transfers, self-care and mobility (scoring less than the maximum score obtainable in one or more components of the Barthel Index¹⁷)
- Stroke survivor residing with a primary caregiver (family member) at home.

Exclusion Criteria

- Severe cognitive difficulties (scoring >1 in Orientation, Executive function, Inattention and Language components of the NIH Stroke Scale for cognition¹⁸)
- Severe communication problem (scoring >1 in Dysarthria and Best Language component of the NIH Stroke Scale¹⁵⁻¹⁶)
- Severe comorbidities (severe psychiatric illness, hearing loss, vision loss)
- Stroke survivor functionally dependent because of other pre-existing conditions (e.g. amputation, fracture, dementia)
- Stroke survivor without a primary caregiver
- Stroke survivor unwilling/unable to adhere to the study protocol
- Did not meet the training requirements regarding operation of a smartphone

Randomisation

Stroke survivors will receive all-usual treatment for stroke. Participants eligible for inclusion will be identified by a trial investigator. The eligible participants will be

1
2
3 initially contacted by telephone and they will be contacted in person by the
4
5 investigator to share, the details about the study to the participant and the identified
6
7 caregiver. If the participant consents (next of kin if participant is unable to consent)
8
9 to participate, the informed written consent will be obtained from them.
10
11
12
13
14

15 An entry form will be used to collect baseline information including the contact
16
17 details of the participant and the identified caregiver. A participant information
18
19 sheet outlining the study objectives, risks and benefits along with brief information
20
21 sheet about stroke will be provided to the participant. After completion of this task,
22
23 information will be forwarded to the independent randomisation centre and the
24
25 participants will be randomised as soon as these forms are received. Participants
26
27 eligible for inclusion will be randomised to the intervention or control arm in a 1:1
28
29 ratio using a secure, central, password-protected, web-based system. The
30
31 intervention will be started within 24 hours of randomisation.
32
33
34
35
36
37
38
39
40

41 **Sample size estimation**

42
43 The two main factors that determine the number of participants needed in this trial
44
45 are the estimated event rate and the size of the treatment effect. The primary
46
47 endpoint for the 'Care for Stroke' trial is dependency in activities of daily living
48
49 measured at six weeks post recruitment.
50
51
52
53
54
55
56
57
58
59
60

1
2
3 Estimated event rate: In a meta-analysis of early supported discharge trial among
4 participants with stroke, 50% of the stroke survivors were either dead or dependent
5 at the end of follow-up and the beneficial effect of the intervention in the treatment
6 group was an odds reduction of 21% of death and dependency¹⁹.
7
8
9
10
11
12
13
14

15 As a non-inferiority one-sided trial, to evaluate the effectiveness of the Smartphone-
16 enabled educational intervention on dependency, I will need approximately 320
17 participants (160 in each group) to detect a 15% difference in dependency among the
18 participants between the treatment groups with 80% power at the 5 % level of
19 statistical significance and with 20% loss to follow up.
20
21
22
23
24
25
26
27
28
29

30 I believe that non-inferiority trials could exclude the possibility of a small degree of
31 inferiority of a new intervention relative to an active control given the sample size.
32
33 The results of the trial provided by the confidence interval provide a concrete
34 evaluation of the precision actually achieved, superseding any power calculation
35 carried out before the starting the trial.
36
37
38
39
40
41
42
43
44
45
46
47

48 **Intervention**

49
50
51 The 'Care for Stroke' intervention will be delivered through a smartphone and it will
52 include information about stroke and the ways to manage post-stroke disabilities.
53
54
55

1
2
3 The intervention includes 2-3 minutes of several videos in vernacular language
4 organized in five sections. The sections are information about stroke, home-based
5 exercises, functional skills training, activities of daily living, and assistive devices.
6
7
8 The intervention will also have an option for the stroke survivor or the identified
9
10 caregiver to contact the intervention provider for any support.
11
12
13
14
15

16 17 18 **Intervention Arm**

19
20 The stroke survivor and their caregiver will receive 45–60 min of training on
21 accessing and use of the intervention (watching videos) via the smartphone.
22
23 Participants will then be provided with a smartphone preloaded with the ‘Care for
24
25 Stroke’ intervention and asked to try it out on their own. Three or more errorless
26
27 attempts to retrieve any required part of the intervention from the smartphone will
28
29 be considered successful training. After successful training, participants will be
30
31 provided with a smartphone loaded with the intervention and will be asked to use
32
33 this intervention at their discretion at home for six weeks.
34
35
36
37
38
39
40
41
42

43 The identified caregivers of stroke survivors will be asked to support the stroke
44
45 survivors as and when necessary to access the intervention from the smartphone.
46
47 The participants will be telephonically supported minimum once in a week during
48
49 the intervention period. The telephonic support is essentially to remind and obtain
50
51 updates from the participants or identified caregivers on utilisation of the
52
53
54
55

1
2
3 intervention. This conversation will be documented and the notes will be kept
4
5 privately in a locked cupboard. The participants in the intervention arm will not be
6
7 restricted from receiving standard treatment for their stroke.
8
9

10 11 12 13 **Control Arm**

14
15 Standard post stroke rehabilitation: Usual stroke rehabilitation services available for
16
17 stroke survivors. In general, the standard treatment may include provision of
18
19 physiotherapy (45minutes to 60 minutes) at home or in a clinic facility for the stroke
20
21 survivors based on goals set by the therapist.
22
23
24
25
26
27

28 **Outcome Measures**

29 30 **Primary Outcome**

31
32 The primary outcome measure is the effect of treatment allocation on dependency
33
34 measured by the modified Rankin Scale ²⁰ (MRS) at six weeks after randomisation.
35
36 The MRS scale measures the degree of disability or dependence in the activities of
37
38 daily living of people who have suffered a stroke in six categories. The maximum
39
40 score a participant can obtain is six (6), which means the participant is dead. A
41
42 participant without any disability would score zero (0).
43
44
45
46
47
48
49
50

51 **Secondary Outcome**

52
53 Secondary outcome measures will be:
54
55

- Modified Barthel Index ¹⁷
- Modified Caregiver Strain Index ²¹
- Quality of Life measured by WHOQOL – BREF ²²
- Use of Health care and Rehabilitation services (Therapy, Hospitalisation and medication, AYUSH, traditional practices etc.)

Costs for rehabilitative care would be collected from both the treatment groups to see whether the Care for Stroke intervention delivered through a smartphone reduces the overall costs of care (cost-effectiveness).

- Direct costs of health care and rehabilitation since the time of stroke
- Indirect costs (A family member giving up paid employment and taking the role of a caregiver, travel costs etc.)

Follow up

An outcome form will be completed at six weeks after randomisation or at death if either happens sooner. A blinded outcome assessor will evaluate the outcomes at baseline and at six weeks. The Stroke Therapy Academic Industry Round Table (STAIRS) strongly recommends a shorter follow-up period to reduce variation in clinical outcome that could occur due to subsequent stroke events that are unrelated to the trial²³. This will also allow accurate assessment of the outcome and ensure safety of the participants ²³.

Adverse events

Adverse events are very common among acute stroke survivors. Some of the expected adverse events during the trial are

1. Death due to any vascular causes (e.g. myocardial infarction, recurrent stroke),
2. Hospitalization due to post-stroke complications such as infections, brain oedema, seizures, deep vein thrombosis, urinary tract infections, pressure sores and shoulder subluxation, dislocation and fracture.

These events will be documented during follow-up telephone calls and it will be presented to an independent data safety and monitoring committee for unblinded review.

Data Collection and Management

This trial will be centrally coordinated from the trial coordination center (TCC) at the Indian Institute of Public Health (IIPH) Hyderabad. Baseline data will be collected by the investigator and follow-up data will be collected with appropriate translation by an independent blinded outcome assessor on paper forms. These data will be scanned and sent to the TCC for entry into the electronic database. An independent data safety and monitoring committee (DSMC) will be set up to monitor data

1
2
3 collection and management. A trial steering committee will also be set up to oversee
4
5 the conduct of the trial.
6
7
8
9

10 **Analysis**

11
12 The main analyses will compare all those allocated to the 'Care for Stroke'
13
14 intervention versus those allocated to the standard treatment group on an 'intention-
15
16 to-treat' basis, irrespective of whether the participants received the treatment
17
18 allocated or not. Appropriate effect estimates with a measure of precision (95%
19
20 confidence interval) will be presented in results of the trial. Subgroup analysis for the
21
22 primary outcome will be based on stroke severity, location of the Participant
23
24 (urban/rural), gender and age at stroke. Interaction tests will also be used to test
25
26 whether the effect of treatment (if any) differs across these subgroups.
27
28
29
30
31
32
33
34
35

36 **Recruitment of participants:**

37
38 The trial will identify and recruit participants from the stroke insurance records
39
40 available at the Aarogyasri trust until the sample size is achieved. Currently, the
41
42 average stroke insurance claim rate through this trust is 10-12 stroke survivors per
43
44 month. Hence it would take approximately 32-36 months for recruiting the proposed
45
46 number of participants in this trial.
47
48
49
50
51
52

53 **Conclusion:**

1
2
3 There is a paucity of global evidence on therapy-based stroke rehabilitation,
4
5 especially in long-term care ²⁴⁻²⁵. Available evidence shows that there is no single
6
7 physical rehabilitation approach that is more effective than combinations of care²⁶.
8
9 Provision of information to stroke survivors and caregivers has been shown to
10
11 improve functional outcomes²⁷. However, the best way to do this is still unclear.
12
13
14
15 Though mHealth strategies have developed various solutions to meet the needs of
16
17 stroke survivors, the best way to utilise this approach in stroke rehabilitation is also
18
19 still unclear²⁸. There is insufficient evidence for tele-rehabilitation services²⁹. This
20
21 context provides a strong grounding for rigorous research on the 'Care for Stroke'
22
23 intervention.
24
25
26
27
28
29
30

31 Investigating the intervention effectiveness as a priority would provide immense
32
33 insights for planning, implementation and the potential scalability of the
34
35 intervention, especially in countries with limited resources. Given the
36
37 methodological quality of the available evidence ²⁷⁻²⁹, there is a pressing need to
38
39 conduct a rigorous (randomized, controlled, sufficiently powered) clinical trial to
40
41 demonstrate the effectiveness of the 'Care for Stroke' intervention.
42
43
44
45
46
47

48 **Ethics and Dissemination**

49
50
51 Ethical approval for this trial has been obtained from the independent institutional
52
53 research ethics committee at the public health foundation of India (IIPH) Hyderabad.
54
55

1
2
3 Results of this trial will be published in relevant, peer-reviewed, indexed,
4
5 international journal.
6
7
8
9
10
11
12
13
14
15
16
17
18
19
20

21 **References**

- 22
- 23 1. Mackay J, Mensah G. The atlas of heart disease and stroke. Geneva,
24 Switzerland: WHO. 2004.
25
26 [27 http://www.who.int/cardiovascular_diseases/en/cvd_atlas_15_burden_stroke.pdf](http://www.who.int/cardiovascular_diseases/en/cvd_atlas_15_burden_stroke.pdf)
28
29
30
31
 - 32 2. Ferri CP, Schoenborn C, Kaira L, Acosta D, Guerra M, Huang Y, Jacob KS,
33 Llibre Rodriquez JJ, Salas A, Sosa AL, et al. Prevalence of stroke and related
34 burden among older people living in Latin America, India and China. J
35 Neurol Neurosurg Psychiatry 2011;82:1074
36
37
38
39
40
41
42
 - 43 3. World report on disability. Geneva, Switzerland: WHO, 2011.
44
45 [46 http://www.who.int/disabilities/world_report/2011/report/en/](http://www.who.int/disabilities/world_report/2011/report/en/)
47
48
 - 49 4. Taylor FC, Sureshkumar K. *Stroke in India fact sheet – updated 2012*. SANCD.
50 India.
51
52
53 [54 http://www.sancd.org/Updated%20Stroke%20Fact%20sheet%202012.pdf](http://www.sancd.org/Updated%20Stroke%20Fact%20sheet%202012.pdf).
55

- 1
2
3 5. Feigin VL, Lawes CM, Bennett DA, Barker-Collo SL, Parag V. Worldwide
4
5 stroke incidence and early case fatality reported in 56 population-based
6
7 studies: a systematic review. *Lancet Neurology*. 2009; 8 (4): 355-369.
8
9
- 10 6. Algurén B, Lundgren-Nilsson Å, Stibrant-Sunnerhagen K. Facilitators and
11
12 barriers of stroke survivors in the early-post stroke phase. *Disability and*
13
14 *Rehabilitation*, 2009; 31(19): 1584–1591.
15
16
17
- 18 7. WHO. *The International Classification of Functioning, Disability and Health*.
19
20 World Health Organization. Geneva, Switzerland: WHO, 2001.
21
22
- 23 8. Sureshkumar K, Murthy GVS, Munuswamy S, S. Goenka and H Kuper. ‘Care
24
25 for Stroke’ a web-based, Smartphone-enabled educational intervention for
26
27 management of physical disabilities following stroke: Feasibility in the Indian
28
29 context. *BMJ Innovations* 2015; 1 127–36.
30
31
32
- 33 9. Peter Craig, Mark Petticrew, Developing and evaluating complex
34
35 interventions: Reflections on the 2008 MRC guidance. *International Journal of*
36
37 *Nursing Studies*. 2013; 50 (5): 585-87.
38
39
40
- 41 10. Craig P. Foreword. In: Richards D, Rahm Hallberg I. *Complex interventions in*
42
43 *health: an overview of research methods*. Routledge, 2015.
44
45
- 46 11. Sureshkumar K, Murthy GVS, Natarajan S, Naveen C, Goenka S, Kuper H.
47
48 Evaluation of the feasibility and acceptability of the ‘Care for Stroke’
49
50 intervention in India, a smartphone-enabled, carer-supported, educational
51
52
53
54
55
56
57
58
59
60

- 1
2
3 intervention for management of disability following stroke. *BMJ Open*
4
5 2016;6:e009243. doi:10.1136/bmjopen-2015009243
6
7
- 8 12. Bowen S, Zwi AB. Pathways to “Evidence-Informed” Policy and Practice: A
9
10 Framework for Action. *PLoS Medicine*. 2005;2(7):e166.
11
12 doi:10.1371/journal.pmed.0020166.
13
14
- 15 13. Peto R, Baigent C. Trials: the next 50 years : Large scale randomised evidence
16
17 of moderate benefits . *BMJ : British Medical Journal*. 1998;317(7167):1170-1171.
18
19
- 20 14. WHO MONICA Project Investigators. The World Health Organization
21
22 MONICA Project (Monitoring trends and determinants in cardiovascular
23
24 disease). *J Clin Epidemiol*. 1988; (41): 105-114.
25
26
27
- 28 15. Department of Health and Human Services. The National Institute of
29
30 Neurological Disorders and Stroke (NINDS). *NIH Stroke Scale Training, Part*
31
32 *2. Basic Instruction*. 2010. <https://archive.org/details/gov.hhs.ninds.stroke.1.2>
33
34 (accessed 3 August 2010).
35
36
37
- 38 16. Ver Hage A. The NIH stroke scale: a window into neurological status.
39
40 *Nurse.Com; Nursing Spectrum (Greater Chicago)*. 2011; 24 (15):44-49.
41
42
- 43 17. Mahoney F, Barthel D. Functional evaluation: the Barthel Index. *Md Med*
44
45 *J*.1965; 14:61–65.
46
47
- 48 18. Cumming TB, Blomstrand C, Bernhardt J, Linden T. The NIH stroke scale can
49
50 establish cognitive function after stroke. *Cerebrovasc Dis*. 2010; 30(1):7-14.
51
52
53
54
55

- 1
2
3 19. Langhorne P, Taylor G, Murray G, Dennise M, Anderson C, Bautz Holter E,
4
5 Dey P, Indredavik B, Mayo N, Power M, et al. Early supported discharge
6
7 services for stroke Participants: a meta-analysis of individual Participants'
8
9 data. *Lancet*. 2005; 365(9458):501–6.
10
11
- 12
13 20. Rankin L. Cerebral vascular accidents in Participants over the age of 60. II.
14
15 Prognosis. *Scott Med J*. 1957; 2: 200-215.
16
17
- 18 21. Thornton, M., & Travis, S.S. Analysis of the reliability of the Modified
19
20 Caregiver Strain Index. *The Journal of Gerontology, Series B*, 2003.
21
22 *Psychological Sciences and Social Sciences*, 58B(2), S127-132.
23
24
- 25 22. World Health Organization's. Quality of Life group: WHOQOL-sBREF
26
27 Introduction. Administration and Scoring. Field Trial version. 1996
28
29
- 30 23. Aziz NA, Leonardi-Bee J, Phillips MF, Gladman JR, Legg L, Walker MF.
31
32 Therapy-based rehabilitation services for Participants living at home more
33
34 than one year after stroke. *Cochrane Database of Systematic Reviews*. 2008, Issue
35
36 2. Art. No.: CD005952. DOI: 10.1002/14651858.CD005952.pub2.
37
38
39
- 40 24. OutParticipant Service Trialists. Therapy-based rehabilitation services for
41
42 stroke Participants at home. *Cochrane Database of Systematic Reviews*. 2003,
43
44 Issue 1. Art. No.: CD002925. DOI: 10.1002/14651858.CD002925.
45
46
47
- 48 25. Turner-Stokes L, Nair A, Sedki I, Disler PB, Wade DT. Multi-disciplinary
49
50 rehabilitation for acquired brain injury in adults of working age. *Cochrane*
51
52
53
54
55

1
2
3 *Database of Systematic Reviews*. 2005, Issue 3. Art. No.: CD004170. DOI:
4
5 10.1002/14651858.CD004170.pub2.
6
7

8 26. Forster A, Brown L, Smith J, House A, Knapp P, Wright JJ, Young J.
9
10 Information provision for stroke Participants and their caregivers. *Cochrane*
11
12 *Database of Systematic Reviews*. 2012, Issue 11. Art. No.: CD001919. DOI:
13
14 10.1002/14651858.CD001919.pub3.
15
16

17
18 27. Laver KE, Schoene D, Crotty M, George S, Lannin NA, Sherrington C.
19
20 Telerehabilitation services for stroke. *Cochrane Database of Systematic Reviews*.
21
22 2013, Issue 12. Art. No.: CD010255. DOI: 10.1002/14651858.CD010255.pub2.
23
24

25
26 28. Laver KE, George S, Thomas S, Deutsch JE, Crotty M. Virtual reality for stroke
27
28 rehabilitation. *Cochrane Database of Systematic Reviews*. 2015, Issue 2. Art. No.:
29
30 CD008349. DOI: 10.1002/14651858.CD008349.pub3.
31
32

33 34 35 **Authors' Contributions**

36
37
38 K Sureshkumar (SK) conceived, designed and drafted the manuscript. Prof GVS
39
40 Murthy and Dr Hannah Kuper played a crucial role in conception of the research
41
42 study and provided substantial guidance in designing and conducting evaluation.
43
44
45

46 47 48 **Funding**

49
50
51 This work was funded and supported **The Wellcome Trust DBT India Alliance**.
52

53
54 Grant Code: IA/CPHE/16/1/502650
55

Competing Interests

The authors declare that they have no competing interests, financial or non-financial.

Acknowledgement

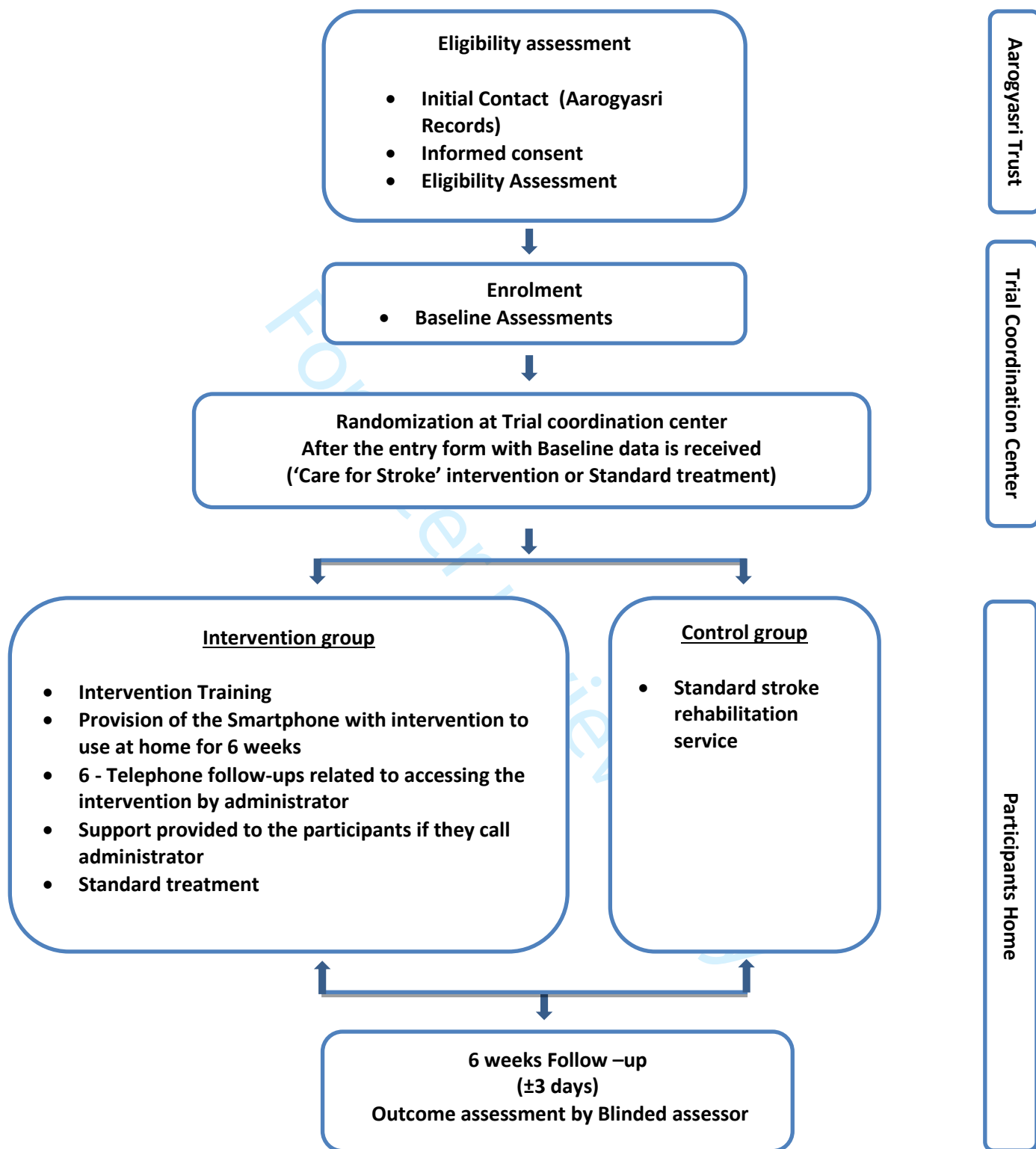
We thank The Wellcome-trust-DBT India Alliance for funding the research study.

We thank the independent institutional research ethics committee of the PHFI-Indian Institute of Public Health - Hyderabad for granting scientific and ethics approval to conduct this research study. We thank the consultants from Suchir softech and Selva photography for developing the software application and digitization of the content of the intervention.

Figure Legends

1. Figure – 1: Flow Chart of the Care for Stroke Trial

Figure – 1: Flow Chart of the Care for Stroke Trial





Template for Intervention Description and Replication

The TIDieR (Template for Intervention Description and Replication) Checklist*:

Information to include when describing an intervention and the location of the information

Item number	Item	Where located **	
		Primary paper (page or appendix number)	Other † (details)
	BRIEF NAME	1, 8, 14	
1.	Provide the name or a phrase that describes the intervention.	_____	_____
	WHY	6,7,8	
2.	Describe any rationale, theory, or goal of the elements essential to the intervention.	_____	_____
	WHAT	8, 14	
3.	Materials: Describe any physical or informational materials used in the intervention, including those provided to participants or used in intervention delivery or in training of intervention providers.	_____	_____
	Provide information on where the materials can be accessed (e.g. online appendix, URL).	8, 14	
4.	Procedures: Describe each of the procedures, activities, and/or processes used in the intervention, including any enabling or support activities.	_____	_____
	WHO PROVIDED	14	
5.	For each category of intervention provider (e.g. psychologist, nursing assistant), describe their expertise, background and any specific training given.	_____	_____
	HOW	13, 14, 15	
6.	Describe the modes of delivery (e.g. face-to-face or by some other mechanism, such as internet or telephone) of the intervention and whether it was provided individually or in a group.	_____	_____
	WHERE	10	
7.	Describe the type(s) of location(s) where the intervention occurred, including any necessary infrastructure or relevant features.	_____	_____

TIDieR checklist

1			
2			
3			
4	WHEN and HOW MUCH	14	
5			
6	8. Describe the number of times the intervention was delivered and over what period of time including		
7	the number of sessions, their schedule, and their duration, intensity or dose.		
8			
9	TAILORING	7, 8	
10			
11	9. If the intervention was planned to be personalised, titrated or adapted, then describe what, why,		
12	when, and how.		
13			
14	MODIFICATIONS	N /A	
15			
16	10.† If the intervention was modified during the course of the study, describe the changes (what, why,		
17	when, and how).		
18			
19	HOW WELL	14	
20			
21	11. Planned: If intervention adherence or fidelity was assessed, describe how and by whom, and if any		
22	strategies were used to maintain or improve fidelity, describe them.		
23			
24	12.‡ Actual: If intervention adherence or fidelity was assessed, describe the extent to which the	14	
25	intervention was delivered as planned.		

** **Authors** - use N/A if an item is not applicable for the intervention being described. **Reviewers** – use ‘?’ if information about the element is not reported/not sufficiently reported.

† If the information is not provided in the primary paper, give details of where this information is available. This may include locations such as a published protocol or other published papers (provide citation details) or a website (provide the URL).

‡ If completing the TIDieR checklist for a protocol, these items are not relevant to the protocol and cannot be described until the study is complete.

* We strongly recommend using this checklist in conjunction with the TIDieR guide (see *BMJ* 2014;348:g1687) which contains an explanation and elaboration for each item.

* The focus of TIDieR is on reporting details of the intervention elements (and where relevant, comparison elements) of a study. Other elements and methodological features of studies are covered by other reporting statements and checklists and have not been duplicated as part of the TIDieR checklist. When a **randomised trial** is being reported, the TIDieR checklist should be used in conjunction with the CONSORT statement (see www.consort-statement.org) as an extension of **Item 5 of the CONSORT 2010 Statement**. When a **clinical trial protocol** is being reported, the TIDieR checklist should be used in conjunction with the SPIRIT statement as an extension of **Item 11 of the SPIRIT 2013 Statement** (see www.spirit-statement.org). For alternate study designs, TIDieR can be used in conjunction with the appropriate checklist for that study design (see www.equator-network.org).

TIDieR checklist

BMJ Open

Protocol for a randomised controlled trial to evaluate the effectiveness of the 'care for stroke' intervention in India; a smartphone-enabled, carer-supported, educational intervention for management of disabilities following stroke

Journal:	<i>BMJ Open</i>
Manuscript ID	bmjopen-2017-020098.R1
Article Type:	Protocol
Date Submitted by the Author:	08-Feb-2018
Complete List of Authors:	Sureshkumar, K; Public Health Foundation of India, Indian Institute of Public Health Hyderabad SACDIR; London School of Hygiene and Tropical Medicine, International Centre for Evidence in Disability Department of clinical research Murthy, GVS; Public Health Foundation of India, , Indian Institute of Public Health Hyderabad SACDIR; London School of Hygiene and Tropical Medicine, International Centre for Eye Health Kuper, Hannah; The London School of Hygiene & Tropical Medicine, Clinical Research
Primary Subject Heading:	Public health
Secondary Subject Heading:	Rehabilitation medicine, Neurology, Health services research, Evidence based practice, Health policy
Keywords:	Clinical trials < THERAPEUTICS, Stroke < NEUROLOGY, Disability, mHealth, REHABILITATION MEDICINE

SCHOLARONE™
Manuscripts

1
2
3 **Protocol for a randomised controlled trial to evaluate the effectiveness of the 'care**
4 **for stroke' intervention in India; a smartphone-enabled, carer-supported,**
5 **educational intervention for management of disabilities following stroke**
6
7
8
9

10
11 K Sureshkumar^{1,3}, GVS Murthy^{1,3}, Hannah Kuper³
12

13
14 **Corresponding Author:**
15

16 Sureshkumar Kamalakannan
17

18 Indian Institute of Public Health - Hyderabad
19

20 Plot No: 1 ANV Arcade, Amar Cooperative Society, Kavuri Hills, Madhapur
21

22 Hyderabad – 500081, Email: suresh.kumar@iiph.org
23

24
25 Phone: +91 9676333412, +91 9840772381.
26
27

28 **Authors**
29
30

- 31 1. Public Health Foundation of India, Indian institute of Public Health - Hyderabad,
32 South Asia Centre for Disability, Inclusive Development and Research (SACDIR)
33 Plot 1 ANV Arcade, Amar Cooperative Society, Kavuri Hills, Madhapur,
34 Hyderabad, Telangana, 500081. suresh.kumar@iiph.org
35
36
37
38
39
40 2. Public Health Foundation of India, Indian institute of Public Health - Hyderabad,
41 South Asia Centre for Disability, Inclusive Development and Research (SACDIR)
42 Plot 1 ANV Arcade, Amar Cooperative Society, Kavuri Hills, Madhapur,
43 Hyderabad, Telangana, 500081. murthy.gvs@iiph.org
44
45
46
47
48
49 3. International Centre for Evidence in Disability, Department of Clinical Research,
50 London School of Hygiene and Tropical Medicine, Keppel Street, London, WC1E
51 7HT. Hannah.Kuper@lshtm.ac.uk
52
53
54
55

Keywords

1. Clinical Trial
2. Stroke
3. Disability
4. Mhealth
5. Rehabilitation
6. Clinical effectiveness

Word Count: Manuscript: - 2769

Abstract:

Introduction: The rising prevalence of stroke and stroke-related disability witnessed globally over the past decades may cause an overwhelming demand for rehabilitation services. This situation is of concern for low and middle income countries (LMIC) like India where the resources for rehabilitation are often limited. Recently, a smartphone-enabled carer-supported educational intervention for management of physical disabilities following stroke was developed in India. It was found feasible and acceptable, but evidence of effectiveness is lacking. Hence as a step forward, this study intends to evaluate clinical effectiveness of the intervention through a randomized controlled trial.

Methods: The objective of the study is to evaluate whether the 'Care for Stroke' intervention is clinically and cost effective for the reduction of dependency in activities of daily living among stroke survivors in an India setting. This study is designed as a randomised controlled trial comparing people who received the intervention to those receiving standard care. The trial will be pragmatic, and outcome assessor-blinded. The primary outcome for the study is dependency in daily living measured by the Modified Rankin Scale. A total of 234 adult stroke survivors who fulfil the eligibility criteria will be randomised to receive either 'Care for Stroke' intervention or standard treatment and will be followed up for six weeks.

1
2
3 **Analysis:** The main analyses will compare participants allocated to the 'Care for
4
5 Stroke' intervention versus those allocated to the standard treatment group on an
6
7 'intention-to-treat' basis, irrespective of whether the participants received the
8
9 treatment allocated or not. The dichotomised MRS scores (0-3 and 4-6) in both the
10
11 groups will be used to calculate the effect estimates with a measure of precision (95%
12
13 confidence interval) and presented in the results of the trial.
14
15
16
17
18
19

20 **Ethics and Dissemination:** The Indian Institute of Public Health-Hyderabad / Public
21
22 Health Foundation of India – Independent Institutional Ethics Committee and the
23
24 ethics committee of the London School of Hygiene & Tropical Medicine.
25
26
27
28
29
30
31
32
33
34
35
36
37
38
39
40
41
42
43
44
45
46
47
48
49
50
51
52
53
54
55
56
57
58
59
60

Registration Details: Clinical Trial Registry of India CTRI/2017/07/009014.

Strengths and Limitations of the study:

1. It is a randomized controlled trial protocol and the trial is rigorously designed.
2. The data collection tools and methods have been pilot-tested in the study setting.
3. The follow-up duration is not long.
4. Recruitment of participants is expected to be time consuming, and so the study duration is long.

Introduction

Globally around 15 million people suffer from stroke each year and a quarter of them experience permanent disability¹. Much of this burden is borne by Low and Middle Income Countries (LMICs)². The increase in prevalence of stroke³ and consequently of stroke-related disability may cause an overwhelming demand for rehabilitation services worldwide³. This situation is especially of concern for LMICs like India where the resources for rehabilitation are often limited³.

Stroke is one of the leading causes of death and disability in India. Given the paucity of data on stroke in India, a systematic review of population-based studies on stroke in India was conducted. Studies included in this review showed that the crude stroke prevalence during the past two decades in India ranged from 44/100,000 persons to 559/100,000 persons,⁴ and the cumulative incidence of stroke in India ranged from 105-152/100,000 person per year⁴. These estimates on stroke incidence and prevalence are found to be higher than those reported from High Income Countries⁵. The growing burden of stroke-related disability and the unmet need for rehabilitation following stroke in India poses a major public health challenge.

There is a paucity of global evidence on the effectiveness of therapy-based stroke rehabilitation, especially in long-term care⁶⁻⁷. Available evidence shows that there is no single physical rehabilitation approach that is more effective than combinations of

1
2
3 care⁸. Provision of information to stroke survivors and caregivers has been shown to
4
5 improve functional outcomes⁹. However, the best way to do this is still unclear.
6
7
8 Recently, mHealth options are rising substantially and mobile technology has been
9
10 substantially used to communicate for health-related reasons. Though mHealth
11
12 strategies have developed various solutions to meet the needs of stroke survivors,
13
14 the best way to utilise this approach in stroke rehabilitation is also still unclear¹⁰.
15
16
17 There is insufficient evidence for tele-rehabilitation services¹¹. This context provides a
18
19 strong grounding for the development of cost-effective multi-dimensional stroke
20
21 rehabilitation interventions to meet the demands of the stroke survivors. In the
22
23 absence of organised stroke care services, and with the limited resources available
24
25 for rehabilitation, a comprehensive approach to address the growing burden of
26
27 stroke-related disability in India becomes pertinent¹². This approach could be
28
29 pivotal in integrating various strategies for rehabilitation³ (Educational,
30
31 Community-based rehabilitation, digital technology, Self/Supported management
32
33 etc.). It could also be useful for targeting the full range of impacts of stroke,
34
35 including on impairments, activity limitations and participation restriction, as
36
37 outlined in the 'Biopsychosocial conceptualization of disability framework' for the
38
39 intervention, as proposed by the ICF¹³.
40
41
42
43
44
45
46
47
48
49
50
51
52
53
54
55
56
57
58
59
60

1
2
3 A smartphone-enabled carer-supported educational intervention was developed by
4
5 our group for the management of physical disabilities following stroke in India¹⁴.
6
7 This intervention was named as 'Care for Stroke'. It was developed using the
8
9 systematic approach to development and evaluation of complex interventions, as
10
11 recommended by the Medical Research Council (MRC) in the U.K. ¹⁵⁻¹⁶. We intended
12
13 to bridge the gaps in access to stroke services through this innovative intervention
14
15 which optimises relevant public health practice with the support from mobile
16
17 devices such as smartphones, personal digital assistants and other wireless devices¹⁷.
18
19 To the best of our knowledge, there is no other stroke rehabilitation intervention
20
21 enabled through mHealth platforms that are available and relevant to India.
22
23
24
25
26
27
28
29
30

31 The intervention was evaluated for its feasibility and acceptability in an Indian
32
33 context¹⁸. The intervention includes information about stroke and the ways to
34
35 manage physical disability following stroke. It contains a practical demonstration
36
37 of functional post-stroke exercises to acquire the functional abilities necessary to
38
39 perform everyday tasks, adaptive techniques to perform one's own daily activities
40
41 independently and a specific section on assistive devices that could enable
42
43 participation of the stroke survivors in their daily tasks¹⁴. Findings from the pilot-
44
45 testing showed that the 'Care for Stroke' intervention was feasible and acceptable in
46
47 the Indian context¹⁸. About 95% of the stroke survivors and all the caregivers (100%)
48
49
50
51
52
53
54
55
56
57
58
59
60

1
2
3 rated the intervention as “excellent”, based on it’s a) overall credibility, b) feasibility
4
5 and c) user-friendliness¹⁸.
6
7
8
9

10 However, feasibility and acceptability alone will not be sufficient to inform
11
12 implementation and scalability¹⁶. Nor will it be enough in order to advocate for
13
14 change in policy towards implementation of an intervention¹⁹. Investigating the
15
16 intervention clinical and cost effectiveness will provide insights for planning,
17
18 implementation and the potential scalability of the intervention, especially in
19
20 countries with limited resources. Given the methodological quality of the available
21
22 evidence ⁹⁻¹¹, there is a pressing need to conduct a rigorous (randomized, controlled,
23
24 sufficiently powered) clinical trial to demonstrate the effectiveness of the ‘Care for
25
26 Stroke’ intervention.
27
28
29
30
31
32
33
34
35

36 **Objective:**
37

38 The objective of the randomised controlled trial is to evaluate whether the ‘Care for
39
40 Stroke’ intervention is effective for the reduction of dependency in activities of daily
41
42 living among stroke survivors compared to people receiving standard treatment in
43
44 an India setting. The primary outcome for the study is disability measured by the
45
46 Modified Rankin Scale.
47
48
49
50
51
52
53
54
55

Methods:

Overview

This trial will be a pragmatic, randomised, outcome assessor-blinded trial to quantify the effectiveness of the Care for Stroke Intervention on reducing dependency in activities of daily living following stroke. A total of 234 adult stroke survivors who fulfil the eligibility criteria will be randomised to receive either 'Care for Stroke' intervention or standard treatment and will be followed for six weeks. The flow chart of the entire trial process is provided in figure - 1.

Pragmatic design and the uncertainty principle

The effectiveness of the intervention in routine practice can be assessed using the pragmatic trial design. Until now, there is no evidence for effectiveness of stroke rehabilitation interventions that is unidisciplinary, led by a physician, neurologist or a physiotherapist alone¹². However, a physiotherapist or physician-driven unidisciplinary rehabilitation is what is commonly practiced in the context of stroke rehabilitation in India¹². Given the lack of evidence, there is a natural uncertainty among the health professionals involved in provision of stroke care about what intervention could work best for the stroke survivors in an Indian context. The eligibility for participant recruitment in the 'Care for Stroke Intervention' trial will be based on this uncertainty principle. This approach to assess participant eligibility is well established²⁰.

Setting

Participant Recruitment

Participants will be identified using their contact details from treatment records for their first ever stroke. These details for stroke survivors in India exist in two places. Participant diagnosis and details can be collected from the hospital records from which an individual received treatment for his/her stroke. It is also available at the government health insurance department where the cost of the treatment for stroke is covered by this insurance department. Hence participants will be identified through both these options. The identified participants will be contacted at their home for consent and recruitment. The intervention will be provided to the participants at home and they will be asked to use the intervention in their home.

Eligible Participants:

Inclusion Criteria

- Adults (aged ≥ 18 years)
- Recent diagnosis of first-ever stroke as defined by the WHO ²¹
- Any level of stroke severity (score 1 - 42, according to NIH stroke scale²²⁻²³)
- Stroke survivor medically stable (reaching a point in medical treatment where life-threatening problems following stroke have been brought under control)

- 1
2
3 • Post-stroke functional status of the stroke survivor: requiring assistance of at
4
5 least one person to perform daily activities such as transfers, self-care and
6
7 mobility (i.e. scoring less than the maximum score obtainable in one or more
8
9 components of the Barthel Index²⁴)
10
11
12
13 • Stroke survivor residing with a primary caregiver (family member) at home.
14
15

18 Exclusion Criteria

- 19
20 • Severe cognitive difficulties (scoring >1 in Orientation, Executive function,
21
22 Inattention and Language components of the NIH Stroke Scale for cognition
23
24
25
26
27
28
29 • Severe communication problem (scoring >1 in Dysarthria and Best Language
30
31 component of the NIH Stroke Scale²²⁻²³)
32
33
34 • Stroke survivor functionally dependent because of other pre-existing
35
36 conditions (e.g. amputation, fracture, dementia)
37
38
39 • Stroke survivor without a primary caregiver
40
41
42 • Stroke survivor unwilling/unable to adhere to the study protocol
43
44
45
46 • Stroke survivors who did not meet the training requirements regarding
47
48
49
50
51
52
53
54
55
56
57
58
59
60
operation of a smartphone

51 Randomisation

1
2
3 Stroke survivors will receive all-usual treatment for stroke. Participants eligible for
4
5 inclusion will be identified by a trial investigator. The eligible participants will be
6
7 initially contacted by telephone and they will be visited in person at their home by
8
9 the investigator to share the details about the study to the participant and the
10
11 identified caregiver. A participant information sheet outlining the study objectives,
12
13 risks and benefits along with brief information sheet about stroke will be provided to
14
15 the participant. Written informed consent for participation in the intervention will be
16
17 sought from all participants or from the next of kin if the participant is unable to
18
19 consent.
20
21
22
23
24
25
26
27

28 An entry form will be used to collect baseline information including the contact
29
30 details of the participant and the identified caregiver. This information will be
31
32 forwarded to the independent randomisation centre and the participants eligible for
33
34 inclusion will be randomised to the intervention or control arm in a 1:1 ratio using a
35
36 secure, central, password-protected, web-based system. The intervention will be
37
38 started within 24 hours of randomisation.
39
40
41
42
43
44
45

46 **Sample size estimation**

47
48 The two main factors that determine the number of participants needed in this trial
49
50 are the estimated event rate and the size of the treatment effect. The primary
51
52
53
54
55

1
2
3 outcome for the 'Care for Stroke' trial is dependency in activities of daily living
4
5 measured at six weeks post recruitment.
6
7
8
9

10 Estimated event rate: In a meta-analysis of early supported discharge trial among
11
12 participants with stroke, 50% of the stroke survivors were either dead or dependent
13
14 at the end of follow-up and the beneficial effect of the intervention in the treatment
15
16 group was an odds reduction of 21% of death and dependency²⁶.
17
18
19
20
21
22

23 As a non-inferiority one-sided trial, to evaluate the effectiveness of the Smartphone-
24
25 enabled educational intervention on dependency, there will be a requirement of
26
27 approximately 234 participants (117 in each group) to detect a 20% difference in
28
29 dependency among the participants between the treatment groups with 80% power
30
31 at the 5 % level of statistical significance and with 20% loss to follow up.
32
33
34
35
36
37

38 A non-inferiority trial could exclude the possibility of a small degree of inferiority of
39
40 a new intervention relative to an active control given the sample size. The results of
41
42 the trial provided by the confidence interval will allow concrete evaluation of the
43
44 precision actually achieved, superseding any power calculation carried out before
45
46 the starting the trial.
47
48
49
50
51
52

53 **Intervention**

54
55
56
57
58
59
60

1
2
3 The 'Care for Stroke' intervention will be delivered through a smartphone and it will
4
5 include information about stroke and the ways to manage post-stroke disabilities.
6
7
8 The intervention includes 2-3 minutes of 60 videos in vernacular language organized
9
10 in five sections. The sections are: 1) information about stroke, 2) home-based
11
12 exercises, 3) functional skills training, 4) activities of daily living, and 5) assistive
13
14 devices. The intervention will be self-directed, with participants seeking information
15
16 in the different categories as they require. The intervention will also have an option
17
18 for the stroke survivor or the identified caregiver to contact the intervention provider
19
20 for any technical support in accessing the intervention through Smartphone.
21
22
23
24
25
26
27
28

29 **Intervention Arm**

30
31 The stroke survivor and their caregiver will receive 45–60 min of training on
32
33 accessing and use of the intervention (watching videos) via the smartphone.
34
35 Participants will then be provided with a smartphone preloaded with the 'Care for
36
37 Stroke' intervention and asked to try it out on their own. Three or more errorless
38
39 attempts to retrieve any required part of the intervention from the smartphone will
40
41 be considered successful training. After successful training, participants will be
42
43 provided with a smartphone loaded with the intervention and will be asked to use
44
45 this intervention at their discretion at home over a six week period.
46
47
48
49
50
51
52
53
54
55
56
57
58
59
60

1
2
3 The identified caregivers of stroke survivors will be asked to support the stroke
4 survivors as and when necessary to access the intervention from the smartphone.
5
6

7
8 The participants will be telephonically supported at least once in a week during the
9
10 intervention period. The telephonic support is essentially to remind and obtain
11
12 updates from the participants or identified caregivers on utilisation of the
13
14 intervention. A summary of this conversation will be documented and the notes will
15
16 be kept privately in a locked cupboard. The participants in the intervention arm will
17
18 not be restricted from receiving standard treatment for their stroke.
19
20
21
22
23
24
25

26 **Control Arm**

27
28 Participants in the control arm will receive standard post stroke rehabilitation
29
30 services. In general, the standard treatment may include provision of physiotherapy
31
32 (45 minutes to 60 minutes) at home or in a clinic facility for the stroke survivors
33
34 based on goals set by the specific therapist or a rehabilitation team.
35
36
37
38
39
40

41 **Outcome Measures**

42 **Primary Outcome**

43
44 The primary outcome measure is dependency in activities of daily living and will be
45
46 measured by the Modified Rankin Scale ²⁷ (MRS) at baseline and at six weeks after
47
48 randomisation. The MRS scale measures the degree of disability or dependence in
49
50 the activities of daily living of people who have suffered a stroke in six categories.
51
52
53
54
55

1
2
3 The scores range from zero (no symptoms) to a maximum of six (dead). A
4
5 dichotomous approach to outcome analysis will be used. Participants' scores will be
6
7 categorised into MRS scores of 0-3 and 4-6.
8
9

10 11 12 13 **Secondary Outcome**

14
15
16 Secondary outcome measures will be:

- 17
18 • Modified Barthel Index ²⁴
- 19
20 • Modified Caregiver Strain Index ²⁸
- 21
22 • Quality of Life measured by WHOQOL – BREF ²⁹
- 23
24 • Use of Health care and Rehabilitation services (Therapy, Hospitalisation and
25
26 medication, AYUSH, traditional practices etc.)
27
28
29

30
31 This information will be collected through questionnaire at baseline and after 6
32
33 weeks. The Smartphone application has an inbuilt monitoring mechanism where the
34
35 usage of the intervention by the participants will be tracked.
36
37
38
39

40
41 Costs for rehabilitative care will be collected from participants both in the treatment
42
43 groups to see whether the Care for Stroke intervention delivered through a
44
45 smartphone reduces the overall costs of care (cost-effectiveness).
46
47

- 48
49 • Direct costs of health care and rehabilitation since the time of stroke
- 50
51 • Indirect costs (A family member giving up paid employment and taking the
52
53 role of a caregiver, travel costs etc.)
54
55

Follow up

An outcome form will be completed at six weeks after randomisation or at death, if either happens sooner. A blinded outcome assessor will evaluate all the outcomes (primary and secondary) at baseline and at six weeks. A relatively short follow-up period has been selected as The Stroke Therapy Academic Industry Round Table (STAIRS) strongly recommends a shorter follow-up period to reduce variation in clinical outcome that could occur due to subsequent stroke events that are unrelated to the trial²⁴. This will also allow accurate assessment of the outcome³⁰.

Adverse events

Adverse events are very common among acute stroke survivors. Some of the expected adverse events during the trial are

1. Death due to any vascular causes (e.g. myocardial infarction, recurrent stroke),
2. Hospitalization due to post-stroke complications such as infections, brain oedema, seizures, deep vein thrombosis, urinary tract infections, pressure sores and shoulder subluxation, dislocation and fracture.
3. Occurrence of secondary stroke.

1
2
3 These events will be documented during follow-up telephone calls and it will be
4
5 presented to an independent data safety and monitoring committee for unblinded
6
7 review.
8
9

10 11 12 13 14 15 16 17 18 **Data Collection and Management**

19
20 This trial will be centrally coordinated from the trial coordination center (TCC) at the
21
22 Indian Institute of Public Health (IIPH) Hyderabad. Baseline data will be collected by
23
24 the investigator and follow-up data will be collected with appropriate translation by
25
26 an independent blinded outcome assessor on paper forms. These data will be
27
28 securely scanned and sent to the TCC for entry into the password protected secured
29
30 electronic database. An independent data safety and monitoring committee (DSMC)
31
32 will be set up to monitor data collection and management. A trial steering committee
33
34 will also be set up to oversee the conduct of the trial.
35
36
37
38
39
40
41
42

43 **Analysis**

44
45 The main analyses will compare all those allocated to the 'Care for Stroke'
46
47 intervention versus those allocated to the standard treatment group on an 'intention-
48
49 to-treat' basis, irrespective of whether the participants received the treatment
50
51 allocated or not. Appropriate effect estimates with a measure of precision (95%
52
53
54
55

1
2
3 confidence interval) will be presented in results of the trial. Subgroup analysis for the
4
5 primary outcome will be based on stroke severity, location of the participant
6
7 (urban/rural), gender and age at stroke. Interaction tests will also be used to test
8
9 whether the effect of treatment (if any) differs across these subgroups.
10
11
12
13
14
15
16
17

18 **Recruitment of participants:**

19
20 The trial will identify and recruit participants from the hospital records as well as
21
22 stroke insurance records available at the Aarogyasri trust until the sample size is
23
24 achieved. Currently, the average stroke insurance claim rate through this trust is 10-
25
26 12 stroke survivors per month. Hence it would take approximately 32-36 months for
27
28 recruiting the proposed number of participants in this trial.
29
30
31
32
33
34
35

36 **Ethics and Dissemination**

37
38 Ethical approval for this trial has been obtained from the independent institutional
39
40 research ethics committee at the public health foundation of India (IIPH) Hyderabad.
41
42 Results of this trial will be published in relevant, peer-reviewed, indexed,
43
44 international journal.
45
46
47
48
49
50

51 **References**

- 1
2
3 1. Global Burden of Disease Collaborative Network. Global Burden of Disease
4
5 Study 2016 (GBD 2016) Disability-Adjusted Life Years and Healthy Life
6
7 Expectancy 1990-2016. Seattle, United States: Institute for Health Metrics and
8
9 Evaluation (IHME), 2017.
10
11
- 12
13 2. Ferri CP, Schoenborn C, Kaira L, Acosta D, Guerra M, Huang Y, Jacob KS,
14
15 Llibre Rodriquez JJ, Salas A, Sosa AL, et al. Prevalence of stroke and related
16
17 burden among older people living in Latin America, India and China. J
18
19 Neurol Neurosurg Psychiatry 2011;82:1074
20
21
- 22
23 3. World report on disability. Geneva, Switzerland: WHO, 2011.
24
25 http://www.who.int/disabilities/world_report/2011/report/en/
26
27
- 28
29 4. Kamalakannan Sureshkumar, Gudlavalleti Aashrai S. V., Gudlavalleti
30
31 Venkata S. Murthy, Goenka Shifalika, Kuper Hannah. Incidence & prevalence
32
33 of stroke in India: A systematic review. 2017; 146 (2): 175-185
34
35
- 36
37 5. Feigin VL, Lawes CM, Bennett DA, Barker-Collo SL, Parag V. Worldwide
38
39 stroke incidence and early case fatality reported in 56 population-based
40
41 studies: a systematic review. *Lancet Neurology*. 2009; 8 (4): 355-369.
42
43
- 44
45 6. OutParticipant Service Trialists. Therapy-based rehabilitation services for
46
47 stroke Participants at home. *Cochrane Database of Systematic Reviews*. 2003,
48
49 Issue 1. Art. No.: CD002925. DOI: 10.1002/14651858.CD002925.
50
- 51
52 7. Turner-Stokes L, Nair A, Sedki I, Disler PB, Wade DT. Multi-disciplinary
53
54 rehabilitation for acquired brain injury in adults of working age. *Cochrane*
55
56

- 1
2
3 *Database of Systematic Reviews*. 2005, Issue 3. Art. No.: CD004170. DOI:
4
5 10.1002/14651858.CD004170.pub2.
6
7
- 8 8. Forster A, Brown L, Smith J, House A, Knapp P, Wright JJ, Young J.
9
10 Information provision for stroke Participants and their caregivers. *Cochrane*
11
12 *Database of Systematic Reviews*. 2012, Issue 11. Art. No.: CD001919. DOI:
13
14 10.1002/14651858.CD001919.pub3.
15
16
- 17 9. Sarfo FS, Ovbiagele B. Mobile health for stroke: a promising concept for
18
19 research and practice. *mHealth*. 2017; 3: 4. doi:10.21037/mhealth.2017.02.01.
20
21
22
- 23 10. Laver KE, Schoene D, Crotty M, George S, Lannin NA, Sherrington C.
24
25 Telerehabilitation services for stroke. *Cochrane Database of Systematic Reviews*.
26
27 2013, Issue 12. Art. No.: CD010255. DOI: 10.1002/14651858.CD010255.pub2.
28
29
- 30 11. Laver KE, George S, Thomas S, Deutsch JE, Crotty M. Virtual reality for stroke
31
32 rehabilitation. *Cochrane Database of Systematic Reviews*. 2015, Issue 2. Art. No.:
33
34 CD008349. DOI: 10.1002/14651858.CD008349.pub3.
35
36
37
- 38 12. Kamalakannan, Sureshkumar et al. Rehabilitation needs of Stroke Survivors
39
40 after Discharge from Hospital in India. *Archives of Physical Medicine and*
41
42 *Rehabilitation*; 2016. Volume 97, Issue 9, 1526 - 1532.e9.
43
44
45
- 46 13. WHO. *The International Classification of Functioning, Disability and Health*.
47
48 World Health Organization. Geneva, Switzerland: WHO, 2001.
49
50
- 51 14. Sureshkumar K, Murthy GVS, Munuswamy S, S. Goenka and H Kuper. 'Care
52
53 for Stroke' a web-based, Smartphone-enabled educational intervention for
54
55

- 1
2
3 management of physical disabilities following stroke: Feasibility in the Indian
4
5 context. *BMJ Innovations* 2015; 1 127–36.
6
7
- 8 15. Peter Craig, Mark Petticrew, Developing and evaluating complex
9
10 interventions: Reflections on the 2008 MRC guidance. *International Journal of*
11
12 *Nursing Studies*. 2013; 50 (5): 585-87.
13
14
- 15 16. Craig P. Foreword. In: Richards D, Rahm Hallberg I. *Complex interventions in*
16
17 *health: an overview of research methods*. Routledge, 2015.
18
19
- 20 17. World Health Organization mHealth: New Horizons for Health through
21
22 Mobile Technologies: Based on the Findings of the Second Global Survey on
23
24 eHealth (Global Observatory for eHealth Series, Volume 3) 2011. [2013-0523].
25
26
- 27 18. Sureshkumar K, Murthy GVS, Natarajan S, Naveen C, Goenka S, Kuper H.
28
29 Evaluation of the feasibility and acceptability of the ‘Care for Stroke’
30
31 intervention in India, a smartphone-enabled, carer-supported, educational
32
33 intervention for management of disability following stroke. *BMJ Open*
34
35 2016;6:e009243. doi:10.1136/bmjopen-2015009243
36
37
38
39
40
- 41 19. Bowen S, Zwi AB. Pathways to “Evidence-Informed” Policy and Practice: A
42
43 Framework for Action. *PLoS Medicine*. 2005;2(7):e166.
44
45 doi:10.1371/journal.pmed.0020166.
46
47
- 48 20. Peto R, Baigent C. Trials: the next 50 years : Large scale randomised evidence
49
50 of moderate benefits . *BMJ : British Medical Journal*. 1998;317(7167):1170-1171.
51
52
53
54
55

- 1
2
3 21. WHO MONICA Project Investigators. The World Health Organization
4
5 MONICA Project (Monitoring trends and determinants in cardiovascular
6
7 disease). *J Clin Epidemiol*. 1988; (41): 105-114.
8
9
- 10 22. Department of Health and Human Services. The National Institute of
11
12 Neurological Disorders and Stroke (NINDS). *NIH Stroke Scale Training, Part*
13
14 *2. Basic Instruction*. 2010. <https://archive.org/details/gov.hhs.ninds.stroke.1.2>
15
16 (accessed 3 August 2010).
17
18
- 19 23. Ver Hage A. The NIH stroke scale: a window into neurological status.
20
21 *Nurse.Com; Nursing Spectrum* (Greater Chicago). 2011; 24 (15):44-49.
22
23
- 24 24. Mahoney F, Barthel D. Functional evaluation: the Barthel Index. *Md Med*
25
26 *J*.1965; 14:61–65.
27
28
- 29 25. Cumming TB, Blomstrand C, Bernhardt J, Linden T. The NIH stroke scale can
30
31 establish cognitive function after stroke. *Cerebrovasc Dis*. 2010; 30(1):7-14.
32
33
- 34 26. Langhorne P, Taylor G, Murray G, Dennise M, Anderson C, Bautz Holter E,
35
36 Dey P, Indredavik B, Mayo N, Power M, et al. Early supported discharge
37
38 services for stroke Participants: a meta-analysis of individual Participants'
39
40 data. *Lancet*. 2005; 365(9458):501–6.
41
42
43
44
- 45 27. Rankin L. Cerebral vascular accidents in Participants over the age of 60. II.
46
47 Prognosis. *Scott Med J*. 1957; 2: 200-215.
48
49
50
51
52
53
54
55

- 1
2
3 28. Thornton, M., & Travis, S.S. Analysis of the reliability of the Modified
4
5 Caregiver Strain Index. *The Journal of Gerontology, Series B*, 2003.
6
7
8 Psychological Sciences and Social Sciences, 58B(2), S127-132.
9
10 29. World Health Organization's. Quality of Life group: WHOQOL-sBREF
11
12 Introduction. Administration and Scoring. Field Trial version. 1996
13
14
15 30. Aziz NA, Leonardi-Bee J, Phillips MF, Gladman JR, Legg L, Walker MF.
16
17
18 Therapy-based rehabilitation services for Participants living at home more
19
20 than one year after stroke. *Cochrane Database of Systematic Reviews*. 2008, Issue
21
22 2. Art. No.: CD005952. DOI: 10.1002/14651858.CD005952.pub2.
23
24
25
26
27

Authors' Contributions

28
29
30 K Sureshkumar (SK) conceived, designed and drafted the manuscript. Prof GVS
31
32
33 Murthy and Dr Hannah Kuper played a crucial role in conception of the research
34
35
36 study and provided substantial guidance in designing and conducting evaluation.
37
38
39
40

Funding

41
42
43 This work was funded and supported **The Wellcome Trust DBT India Alliance**.
44
45
46 Grant Code: IA/CPHE/16/1/502650
47
48
49
50

Competing Interests

51
52
53 The authors declare that they have no competing interests, financial or non-financial.
54
55
56
57
58
59
60

Acknowledgement

We thank The Wellcome-trust-DBT India Alliance for funding the research study.

We thank the independent institutional research ethics committee of the PHFI-Indian Institute of Public Health - Hyderabad for granting scientific and ethics approval to conduct this research study. We thank the consultants from Suchir softech and Selva photography for developing the software application and digitization of the content of the intervention.

Figure Legends

1. Figure – 1: Flow Chart of the Care for Stroke Trial

1
2
3
4
5
6
7
8
9
10
11
12
13
14
15
16
17
18
19
20
21
22
23
24
25
26
27
28
29
30
31
32
33
34
35
36
37
38
39
40
41
42
43
44
45
46
47
48
49
50
51
52
53
54
55
56
57
58
59
60

Figure – 1: Flow Chart of the Care for Stroke Trial

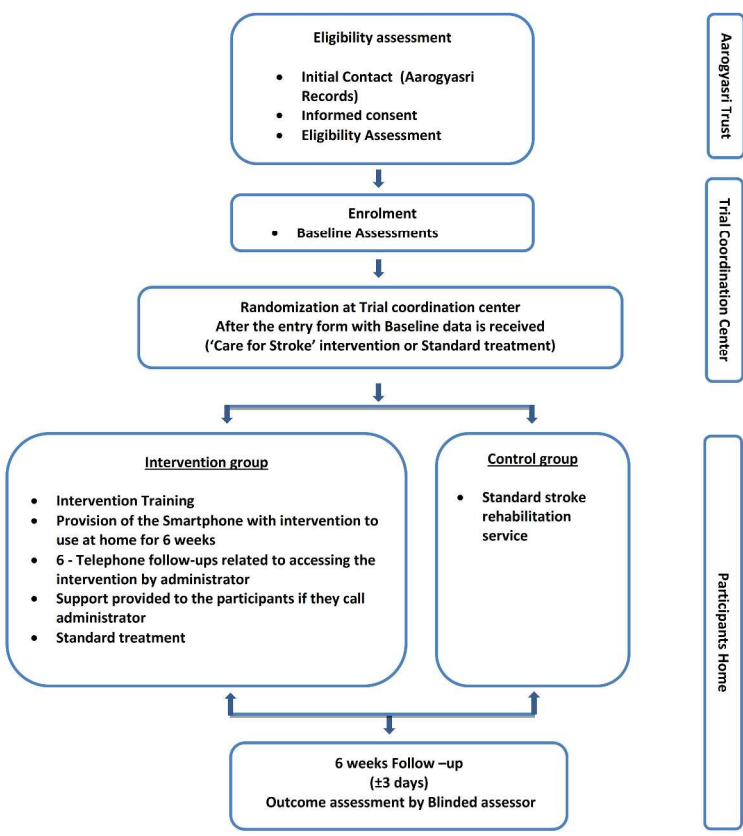


Figure – 1: Flow Chart of the Care for Stroke Trial Process



SPIRIT 2013 Checklist: Recommended items to address in a clinical trial protocol and related documents*

Section/item	Item No	Description	Addressed on page number
Administrative information			
Title	1	Descriptive title identifying the study design, population, interventions, and, if applicable, trial acronym	<u>1</u>
Trial registration	2a	Trial identifier and registry name. If not yet registered, name of intended registry	<u>4</u>
	2b	All items from the World Health Organization Trial Registration Data Set	<u>4</u>
Protocol version	3	Date and version identifier	<u>1</u>
Funding	4	Sources and types of financial, material, and other support	<u>25</u>
Roles and responsibilities	5a	Names, affiliations, and roles of protocol contributors	<u>1</u>
	5b	Name and contact information for the trial sponsor	<u>25</u>
	5c	Role of study sponsor and funders, if any, in study design; collection, management, analysis, and interpretation of data; writing of the report; and the decision to submit the report for publication, including whether they will have ultimate authority over any of these activities	<u>N/A</u>
	5d	Composition, roles, and responsibilities of the coordinating centre, steering committee, endpoint adjudication committee, data management team, and other individuals or groups overseeing the trial, if applicable (see Item 21a for data monitoring committee)	<u>19</u>

1	Introduction				
2					
3	Background and rationale	6a	Description of research question and justification for undertaking the trial, including summary of relevant studies (published and unpublished) examining benefits and harms for each intervention	<u>6-8</u>	
4					
5					
6		6b	Explanation for choice of comparators	<u>6-8</u>	
7					
8	Objectives	7	Specific objectives or hypotheses	<u>9</u>	
9					
10	Trial design	8	Description of trial design including type of trial (eg, parallel group, crossover, factorial, single group), allocation ratio, and framework (eg, superiority, equivalence, noninferiority, exploratory)	<u>9,14</u>	
11					
12					
13					
14	Methods: Participants, interventions, and outcomes				
15					
16	Study setting	9	Description of study settings (eg, community clinic, academic hospital) and list of countries where data will be collected. Reference to where list of study sites can be obtained	<u>11</u>	
17					
18					
19	Eligibility criteria	10	Inclusion and exclusion criteria for participants. If applicable, eligibility criteria for study centres and individuals who will perform the interventions (eg, surgeons, psychotherapists)	<u>11</u>	
20					
21					
22	Interventions	11a	Interventions for each group with sufficient detail to allow replication, including how and when they will be administered	<u>14-15</u>	
23					
24			11b	Criteria for discontinuing or modifying allocated interventions for a given trial participant (eg, drug dose change in response to harms, participant request, or improving/worsening disease)	<u>17</u>
25					
26		11c	Strategies to improve adherence to intervention protocols, and any procedures for monitoring adherence (eg, drug tablet return, laboratory tests)	<u>14-15</u>	
27					
28					
29		11d	Relevant concomitant care and interventions that are permitted or prohibited during the trial	<u>14-15</u>	
30					
31					
32	Outcomes	12	Primary, secondary, and other outcomes, including the specific measurement variable (eg, systolic blood pressure), analysis metric (eg, change from baseline, final value, time to event), method of aggregation (eg, median, proportion), and time point for each outcome. Explanation of the clinical relevance of chosen efficacy and harm outcomes is strongly recommended	<u>16-17</u>	
33					
34					
35	Participant timeline	13	Time schedule of enrolment, interventions (including any run-ins and washouts), assessments, and visits for participants. A schematic diagram is highly recommended (see Figure)	<u>Figure-1</u>	
36					
37					
38					
39					
40					
41					
42					
43					
44					
45					
46					

1	Sample size	14	Estimated number of participants needed to achieve study objectives and how it was determined, including clinical and statistical assumptions supporting any sample size calculations	<u>13</u>
2				
3				
4	Recruitment	15	Strategies for achieving adequate participant enrolment to reach target sample size	<u>11</u>
5				
6				
7	Methods: Assignment of interventions (for controlled trials)			
8	Allocation:			
9				
10	Sequence	16a	Method of generating the allocation sequence (eg, computer-generated random numbers), and list of any factors for stratification. To reduce predictability of a random sequence, details of any planned restriction (eg, blocking) should be provided in a separate document that is unavailable to those who enrol participants or assign interventions	<u>12-13</u>
11	generation			
12				
13				
14				
15				
16	Allocation	16b	Mechanism of implementing the allocation sequence (eg, central telephone; sequentially numbered, opaque, sealed envelopes), describing any steps to conceal the sequence until interventions are assigned	<u>12-13</u>
17	concealment			
18	mechanism			
19				
20	Implementation	16c	Who will generate the allocation sequence, who will enrol participants, and who will assign participants to interventions	<u>12-13</u>
21				
22				
23				
24	Blinding (masking)	17a	Who will be blinded after assignment to interventions (eg, trial participants, care providers, outcome assessors, data analysts), and how	<u>17</u>
25				
26				
27		17b	If blinded, circumstances under which unblinding is permissible, and procedure for revealing a participant's allocated intervention during the trial	<u>18</u>
28				
29				
30				
31	Methods: Data collection, management, and analysis			
32				
33	Data collection	18a	Plans for assessment and collection of outcome, baseline, and other trial data, including any related processes to promote data quality (eg, duplicate measurements, training of assessors) and a description of study instruments (eg, questionnaires, laboratory tests) along with their reliability and validity, if known. Reference to where data collection forms can be found, if not in the protocol	<u>17-18</u>
34	methods			
35				
36				
37				
38				
39		18b	Plans to promote participant retention and complete follow-up, including list of any outcome data to be collected for participants who discontinue or deviate from intervention protocols	<u>16-17</u>
40				
41				
42				
43				
44				
45				
46				

1	Data management	19	Plans for data entry, coding, security, and storage, including any related processes to promote data quality (eg, double data entry; range checks for data values). Reference to where details of data management procedures can be found, if not in the protocol	<u>19</u>
2				
3				
4				
5	Statistical methods	20a	Statistical methods for analysing primary and secondary outcomes. Reference to where other details of the statistical analysis plan can be found, if not in the protocol	<u>19</u>
6				
7				
8		20b	Methods for any additional analyses (eg, subgroup and adjusted analyses)	<u>19</u>
9				
10		20c	Definition of analysis population relating to protocol non-adherence (eg, as randomised analysis), and any statistical methods to handle missing data (eg, multiple imputation)	<u>19</u>
11				
12				
13				
14	Methods: Monitoring			
15				
16	Data monitoring	21a	Composition of data monitoring committee (DMC); summary of its role and reporting structure; statement of whether it is independent from the sponsor and competing interests; and reference to where further details about its charter can be found, if not in the protocol. Alternatively, an explanation of why a DMC is not needed	<u>19</u>
17				
18				
19				
20				
21				
22		21b	Description of any interim analyses and stopping guidelines, including who will have access to these interim results and make the final decision to terminate the trial	<u>19</u>
23				
24				
25	Harms	22	Plans for collecting, assessing, reporting, and managing solicited and spontaneously reported adverse events and other unintended effects of trial interventions or trial conduct	<u>19</u>
26				
27				
28	Auditing	23	Frequency and procedures for auditing trial conduct, if any, and whether the process will be independent from investigators and the sponsor	<u>19</u>
29				
30				
31				
32	Ethics and dissemination			
33				
34	Research ethics approval	24	Plans for seeking research ethics committee/institutional review board (REC/IRB) approval	<u>20</u>
35				
36				
37	Protocol amendments	25	Plans for communicating important protocol modifications (eg, changes to eligibility criteria, outcomes, analyses) to relevant parties (eg, investigators, REC/IRBs, trial participants, trial registries, journals, regulators)	<u>20</u>
38				
39				
40				
41				
42				
43				
44				
45				
46				

1	Consent or assent	26a	Who will obtain informed consent or assent from potential trial participants or authorised surrogates, and how (see Item 32)	<u>13</u>
2				
3				
4		26b	Additional consent provisions for collection and use of participant data and biological specimens in ancillary studies, if applicable	<u>13</u>
5				
6				
7	Confidentiality	27	How personal information about potential and enrolled participants will be collected, shared, and maintained in order to protect confidentiality before, during, and after the trial	<u>18</u>
8				
9				
10	Declaration of interests	28	Financial and other competing interests for principal investigators for the overall trial and each study site	<u>25</u>
11				
12				
13	Access to data	29	Statement of who will have access to the final trial dataset, and disclosure of contractual agreements that limit such access for investigators	<u>18-19</u>
14				
15				
16	Ancillary and post-trial care	30	Provisions, if any, for ancillary and post-trial care, and for compensation to those who suffer harm from trial participation	<u>N/A</u>
17				
18				
19				
20	Dissemination policy	31a	Plans for investigators and sponsor to communicate trial results to participants, healthcare professionals, the public, and other relevant groups (eg, via publication, reporting in results databases, or other data sharing arrangements), including any publication restrictions	<u>20</u>
21				
22				
23				
24		31b	Authorship eligibility guidelines and any intended use of professional writers	<u>N/A</u>
25				
26		31c	Plans, if any, for granting public access to the full protocol, participant-level dataset, and statistical code	<u>4,20</u>
27				
28				
29	Appendices			
30				
31	Informed consent materials	32	Model consent form and other related documentation given to participants and authorised surrogates	<u>NO</u>
32				
33				
34	Biological specimens	33	Plans for collection, laboratory evaluation, and storage of biological specimens for genetic or molecular analysis in the current trial and for future use in ancillary studies, if applicable	<u>N/A</u>
35				
36				

*It is strongly recommended that this checklist be read in conjunction with the SPIRIT 2013 Explanation & Elaboration for important clarification on the items. Amendments to the protocol should be tracked and dated. The SPIRIT checklist is copyrighted by the SPIRIT Group under the Creative Commons [“Attribution-NonCommercial-NoDerivs 3.0 Unported”](https://creativecommons.org/licenses/by-nc-nd/3.0/) license.

BMJ Open

Protocol for a randomised controlled trial to evaluate the effectiveness of the 'care for stroke' intervention in India; a smartphone-enabled, carer-supported, educational intervention for management of disabilities following stroke

Journal:	<i>BMJ Open</i>
Manuscript ID	bmjopen-2017-020098.R2
Article Type:	Protocol
Date Submitted by the Author:	03-Apr-2018
Complete List of Authors:	Sureshkumar, K; Public Health Foundation of India, Indian Institute of Public Health Hyderabad SACDIR; London School of Hygiene and Tropical Medicine, International Centre for Evidence in Disability Department of clinical research Murthy, GVS; Public Health Foundation of India, , Indian Institute of Public Health Hyderabad SACDIR; London School of Hygiene and Tropical Medicine, International Centre for Eye Health Kuper, Hannah; The London School of Hygiene & Tropical Medicine, Clinical Research
Primary Subject Heading:	Public health
Secondary Subject Heading:	Rehabilitation medicine, Neurology, Health services research, Evidence based practice, Health policy
Keywords:	Clinical trials < THERAPEUTICS, Stroke < NEUROLOGY, Disability, mHealth, REHABILITATION MEDICINE

SCHOLARONE™
Manuscripts

1
2
3 **Protocol for a randomised controlled trial to evaluate the effectiveness of the 'care**
4 **for stroke' intervention in India; a smartphone-enabled, carer-supported,**
5 **educational intervention for management of disabilities following stroke**
6
7
8
9

10
11 K Sureshkumar^{1,3}, GVS Murthy^{1,3}, Hannah Kuper³
12

13
14 **Corresponding Author:**
15

16 Sureshkumar Kamalakannan
17

18 Indian Institute of Public Health - Hyderabad
19

20 Plot No: 1 ANV Arcade, Amar Cooperative Society, Kavuri Hills, Madhapur
21

22 Hyderabad – 500081, Email: suresh.kumar@iiphh.org
23

24
25 Phone: +91 9676333412, +91 9840772381.
26
27

28 **Authors**
29
30

- 31 1. Public Health Foundation of India, Indian institute of Public Health - Hyderabad,
32 South Asia Centre for Disability, Inclusive Development and Research (SACDIR)
33 Plot 1 ANV Arcade, Amar Cooperative Society, Kavuri Hills, Madhapur,
34 Hyderabad, Telangana, 500081. suresh.kumar@iiphh.org
35
36
37
38
39
40 2. Public Health Foundation of India, Indian institute of Public Health - Hyderabad,
41 South Asia Centre for Disability, Inclusive Development and Research (SACDIR)
42 Plot 1 ANV Arcade, Amar Cooperative Society, Kavuri Hills, Madhapur,
43 Hyderabad, Telangana, 500081. murthy.gvs@iiphh.org
44
45
46
47
48
49 3. International Centre for Evidence in Disability, Department of Clinical Research,
50 London School of Hygiene and Tropical Medicine, Keppel Street, London, WC1E
51
52
53
54 7HT. Hannah.Kuper@lshtm.ac.uk
55
56

Keywords

1. Clinical Trial
2. Stroke
3. Disability
4. Mhealth
5. Rehabilitation
6. Clinical effectiveness

Word Count: Manuscript: - 2769

Abstract:

Introduction: The rising prevalence of stroke and stroke-related disability witnessed globally over the past decades may cause an overwhelming demand for rehabilitation services. This situation is of concern for low and middle income countries (LMIC) like India where the resources for rehabilitation are often limited. Recently, a smartphone-enabled carer-supported educational intervention for management of physical disabilities following stroke was developed in India. It was found feasible and acceptable, but evidence of effectiveness is lacking. Hence as a step forward, this study intends to evaluate clinical effectiveness of the intervention through a randomized controlled trial.

Methods: The objective of the study is to evaluate whether the 'Care for Stroke' intervention is clinically and cost effective for the reduction of dependency in activities of daily living among stroke survivors in an India setting. This study is designed as a randomised controlled trial comparing people who received the intervention to those receiving standard care. The trial will be pragmatic, and outcome assessor-blinded. The primary outcome for the study is dependency in daily living measured by the Modified Rankin Scale. A total of 266 adult stroke survivors who fulfil the eligibility criteria will be randomised to receive either 'Care for Stroke' intervention or standard treatment and will be followed up for six weeks. The main analyses will compare participants allocated to the 'Care for Stroke'

1
2
3 intervention versus those allocated to the standard treatment group on an 'intention-
4
5 to-treat' basis, irrespective of whether the participants received the treatment
6
7 allocated or not. The dichotomised MRS scores (0-3 and 4-6) in both the groups will
8
9 be used to calculate the effect estimates with a measure of precision (95% confidence
10
11 interval) and presented in the results of the trial.
12
13
14
15
16
17

18 **Ethics and Dissemination:** The Indian Institute of Public Health-Hyderabad / Public
19
20 Health Foundation of India – Independent Institutional Ethics Committee and the
21
22 ethics committee of the London School of Hygiene & Tropical Medicine.
23
24 Dissemination will be through peer-reviewed publications.
25
26
27
28
29
30

31 **Registration Details:** Clinical Trial Registry of India CTRI/2017/07/009014.
32
33
34
35
36
37
38
39
40
41
42
43
44
45
46
47
48
49
50
51
52
53
54
55
56
57
58
59
60

Strengths and Limitations of the study:

1. Effectiveness of the intervention will be established through a randomised controlled trial.
2. The trial protocol was pilot tested and was found feasible.
3. This is the first ever stroke trial in India evaluating a mHealth rehab intervention
4. Stringent inclusion criteria for participant recruitment.
5. The duration of follow-up in the trial is not long.

Introduction

1
2
3 Globally around 15 million people suffer from stroke each year and a quarter of them
4
5 experience permanent disability¹. Much of this burden is borne by Low and Middle
6
7 Income Countries (LMICs)². The increase in prevalence of stroke³ and consequently
8
9 of stroke-related disability may cause an overwhelming demand for rehabilitation
10
11 services worldwide³. This situation is especially of concern for LMICs like India
12
13 where the resources for rehabilitation are often limited³.
14
15
16
17
18
19

20 Stroke is one of the leading causes of death and disability in India. Given the paucity
21
22 of data on stroke in India, a systematic review of population-based studies on stroke
23
24 in India was conducted. Studies included in this review showed that the crude stroke
25
26 prevalence during the past two decades in India ranged from 44/100,000 persons to
27
28 559/100,000 persons,⁴ and the cumulative incidence of stroke in India ranged from
29
30 105-152/100,000 person per year⁴. These estimates on stroke incidence and prevalence
31
32 are found to be higher than those reported from High Income Countries⁵. The
33
34 growing burden of stroke-related disability and the unmet need for rehabilitation
35
36 following stroke in India poses a major public health challenge.
37
38
39
40
41
42
43
44
45

46 There is a paucity of global evidence on the effectiveness of therapy-based stroke
47
48 rehabilitation, especially in long-term care⁶⁻⁷. Available evidence shows that there is
49
50 no single physical rehabilitation approach that is more effective than combinations of
51
52 care⁸. Provision of information to stroke survivors and caregivers has been shown to
53
54
55

1
2
3 improve functional outcomes⁹. However, the best way to do this is still unclear.
4
5 Recently, mHealth options are rising substantially and mobile technology has been
6
7 substantially used to communicate for health-related reasons. Though mHealth
8
9 strategies have developed various solutions to meet the needs of stroke survivors,
10
11 the best way to utilise this approach in stroke rehabilitation is also still unclear¹⁰.
12
13 There is insufficient evidence for tele-rehabilitation services¹¹. This context provides a
14
15 strong grounding for the development of cost-effective multi-dimensional stroke
16
17 rehabilitation interventions to meet the demands of the stroke survivors. In the
18
19 absence of organised stroke care services, and with the limited resources available
20
21 for rehabilitation, a comprehensive approach to address the growing burden of
22
23 stroke-related disability in India becomes pertinent¹². This approach could be
24
25 pivotal in integrating various strategies for rehabilitation³ (Educational,
26
27 Community-based rehabilitation, digital technology, Self/Supported management
28
29 etc.). It could also be useful for targeting the full range of impacts of stroke,
30
31 including on impairments, activity limitations and participation restriction, as
32
33 outlined in the 'Biopsychosocial conceptualization of disability framework' for the
34
35 intervention, as proposed by the ICF¹³.
36
37
38
39
40
41
42
43
44
45
46
47
48
49
50

51 A smartphone-enabled carer-supported educational intervention was developed by
52
53 our group for the management of physical disabilities following stroke in India¹⁴.
54
55

1
2
3 This intervention was named as 'Care for Stroke'. It was developed using the
4
5 systematic approach to development and evaluation of complex interventions, as
6
7 recommended by the Medical Research Council (MRC) in the U.K. ¹⁵⁻¹⁶. We intended
8
9 to bridge the gaps in access to stroke services through this innovative intervention
10
11 which optimises relevant public health practice with the support from mobile
12
13 devices such as smartphones, personal digital assistants and other wireless devices¹⁷.
14
15 To the best of our knowledge, there is no other stroke rehabilitation intervention
16
17 enabled through mHealth platforms that are available and relevant to India.
18
19
20
21
22
23
24
25

26 The intervention was evaluated for its feasibility and acceptability in an Indian
27
28 context¹⁸. The intervention includes information about stroke and the ways to
29
30 manage physical disability following stroke. It contains a practical demonstration
31
32 of functional post-stroke exercises to acquire the functional abilities necessary to
33
34 perform everyday tasks, adaptive techniques to perform one's own daily activities
35
36 independently and a specific section on assistive devices that could enable
37
38 participation of the stroke survivors in their daily tasks¹⁴. Findings from the pilot-
39
40 testing showed that the 'Care for Stroke' intervention was feasible and acceptable in
41
42 the Indian context¹⁸. About 95% of the stroke survivors and all the caregivers (100%)
43
44 rated the intervention as "excellent", based on it's a) overall credibility, b) feasibility
45
46 and c) user-friendliness¹⁸.
47
48
49
50
51
52
53
54
55
56
57
58
59
60

1
2
3 However, feasibility and acceptability alone will not be sufficient to inform
4
5 implementation and scalability¹⁶. Nor will it be enough in order to advocate for
6
7 change in policy towards implementation of an intervention¹⁹. Investigating the
8
9 intervention clinical and cost effectiveness will provide insights for planning,
10
11 implementation and the potential scalability of the intervention, especially in
12
13 countries with limited resources. Given the methodological quality of the available
14
15 evidence ⁹⁻¹¹, there is a pressing need to conduct a rigorous (randomized, controlled,
16
17 sufficiently powered) clinical trial to demonstrate the effectiveness of the 'Care for
18
19 Stroke' intervention.
20
21
22
23
24
25
26
27

28 **Objective:**

29
30 The objective of the randomised controlled trial is to evaluate whether the 'Care for
31
32 Stroke' intervention is effective for the reduction of dependency in activities of daily
33
34 living among stroke survivors compared to people receiving standard treatment in
35
36 an India setting. The primary outcome for the study is disability measured by the
37
38 Modified Rankin Scale.
39
40
41
42
43
44
45
46
47

48 **Methods:**

49 **Overview**

50
51
52
53
54
55
56
57
58
59
60

1
2
3 This trial will be a pragmatic, randomised, outcome assessor-blinded trial to quantify
4
5 the effectiveness of the Care for Stroke Intervention on reducing dependency in
6
7 activities of daily living following stroke. A total of 266 adult stroke survivors who
8
9 fulfil the eligibility criteria will be randomised to receive either 'Care for Stroke'
10
11 intervention or standard treatment and will be followed for six weeks. The flow chart
12
13 of the entire trial process is provided in figure - 1.
14
15
16
17
18
19

20 **Pragmatic design and the uncertainty principle**

21
22 The effectiveness of the intervention in routine practice can be assessed using the
23
24 pragmatic trial design. Until now, there is no evidence for effectiveness of stroke
25
26 rehabilitation interventions that is unidisciplinary, led by a physician, neurologist or
27
28 a physiotherapist alone¹². However, a physiotherapist or physician-driven
29
30 unidisciplinary rehabilitation is what is commonly practiced in the context of stroke
31
32 rehabilitation in India¹². Given the lack of evidence, there is a natural uncertainty
33
34 among the health professionals involved in provision of stroke care about what
35
36 intervention could work best for the stroke survivors in an Indian context. The
37
38 eligibility for participant recruitment in the 'Care for Stroke Intervention' trial will be
39
40 based on this uncertainty principle. This approach to assess participant eligibility is
41
42 well established²⁰.
43
44
45
46
47
48
49

50 **Setting**

51 **Participant Recruitment**

1
2
3 Participants will be identified using their contact details from treatment records for
4
5 their first ever stroke. These details for stroke survivors in India exist in two places.
6
7
8 Participant diagnosis and details can be collected from the hospital records from
9
10 which an individual received treatment for his/her stroke. It is also available at the
11
12 government health insurance department where the cost of the treatment for stroke
13
14 is covered by this insurance department. Hence participants will be identified
15
16 through both these options. The identified participants will be contacted at their
17
18 home for consent and recruitment. The intervention will be provided to the
19
20 participants at home and they will be asked to use the intervention in their home.
21
22
23
24
25
26
27

28 **Eligible Participants:**

30 **Inclusion Criteria**

- 33 • Adults (aged ≥ 18 years)
- 34
- 35 • Recent diagnosis of first-ever stroke as defined by the WHO ²¹
- 36
- 37 • Any level of stroke severity (score 1 - 42, according to NIH stroke scale²²⁻²³)
- 38
- 39 • Stroke survivor medically stable (reaching a point in medical treatment where
- 40
- 41 life-threatening problems following stroke have been brought under control)
- 42
- 43 • Post-stroke functional status of the stroke survivor: requiring assistance of at
- 44
- 45 least one person to perform daily activities such as transfers, self-care and
- 46
- 47 mobility (i.e. scoring less than the maximum score obtainable in one or more
- 48
- 49 components of the Barthel Index²⁴)
- 50
- 51
- 52
- 53
- 54
- 55

- Stroke survivor residing with a primary caregiver (family member) at home.

Exclusion Criteria

- Severe cognitive difficulties (scoring >1 in Orientation, Executive function, Inattention and Language components of the NIH Stroke Scale for cognition²⁵)
- Severe communication problem (scoring >1 in Dysarthria and Best Language component of the NIH Stroke Scale²²⁻²³)
- Stroke survivor functionally dependent because of other pre-existing conditions (e.g. amputation, fracture, dementia)
- Stroke survivor without a primary caregiver
- Stroke survivor unwilling/unable to adhere to the study protocol
- Stroke survivors who did not meet the training requirements regarding operation of a smartphone. This criterion was deliberately placed just to make sure that there is no dropout after the recruitment. It was based on the observations from previous piloting.

Randomisation

1
2
3 Stroke survivors will receive all-usual treatment for stroke. Participants eligible for
4
5 inclusion will be identified by a trial investigator. The eligible participants will be
6
7 initially contacted by telephone and they will be visited in person at their home by
8
9 the investigator to share the details about the study to the participant and the
10
11 identified caregiver. A participant information sheet outlining the study objectives,
12
13 risks and benefits along with brief information sheet about stroke will be provided to
14
15 the participant. Written informed consent for participation in the intervention will be
16
17 sought from all participants or from the next of kin if the participant is unable to
18
19 consent.
20
21
22
23
24
25
26
27

28 An entry form will be used to collect baseline information including the contact
29
30 details of the participant and the identified caregiver. This information will be
31
32 forwarded to the independent randomisation centre and the participants eligible for
33
34 inclusion will be randomised to the intervention or control arm in a 1:1 ratio using a
35
36 secure, central, password-protected, web-based system. The intervention will be
37
38 started within 24 hours of randomisation.
39
40
41
42
43
44
45

46 **Sample size estimation**

47
48 The two main factors that determine the number of participants needed in this trial
49
50 are the estimated event rate and the size of the treatment effect. The primary
51
52
53
54
55

1
2
3 outcome for the 'Care for Stroke' trial is dependency in activities of daily living
4
5 measured at six weeks post recruitment.
6
7
8
9

10 Estimated event rate: In a meta-analysis of early supported discharge trial among
11
12 participants with stroke, 50% of the stroke survivors were either dead or dependent
13
14 at the end of follow-up and the beneficial effect of the intervention in the treatment
15
16 group was an odds reduction of 21% of death and dependency²⁶.
17
18
19
20
21
22

23 As a non-inferiority one-sided trial, to evaluate the effectiveness of the Smartphone-
24
25 enabled educational intervention on dependency, there will be a requirement of 266
26
27 participants (133 in each group) to detect a 20% difference in dependency among the
28
29 participants between the treatment groups with 90% power at the 5 % level of
30
31 statistical significance and with 20% loss to follow up.
32
33
34
35
36
37

38 A non-inferiority trial could exclude the possibility of a small degree of inferiority of
39
40 a new intervention relative to an active control given the sample size. The results of
41
42 the trial provided by the confidence interval will allow concrete evaluation of the
43
44 precision actually achieved, superseding any power calculation carried out before
45
46 the starting the trial.
47
48
49
50
51
52
53
54
55

Intervention

The 'Care for Stroke' intervention will be delivered through a smartphone and it will include information about stroke and the ways to manage post-stroke disabilities.

The intervention includes 2-3 minutes of 60 videos in vernacular language organized in five sections. The sections are: 1) information about stroke, 2) home-based exercises, 3) functional skills training, 4) activities of daily living, and 5) assistive devices. The intervention will be self-directed, with participants seeking information in the different categories as they require. The intervention will also have an option for the stroke survivor or the identified caregiver to contact the intervention provider for any technical support in accessing the intervention through Smartphone.

Intervention Arm

The stroke survivor and their caregiver will receive 45–60 min of training on accessing and use of the intervention (watching videos) via the smartphone.

Participants will then be provided with a smartphone preloaded with the 'Care for Stroke' intervention and asked to try it out on their own. Three or more errorless attempts to retrieve any required part of the intervention from the smartphone will be considered successful training. After successful training, participants will be provided with a smartphone loaded with the intervention and will be asked to use this intervention at their discretion at home over a six week period.

1
2
3 The identified caregivers of stroke survivors will be asked to support the stroke
4 survivors as and when necessary to access the intervention from the smartphone.
5
6

7
8 The participants will be telephonically supported at least once in a week during the
9
10 intervention period. The telephonic support is essentially to remind and obtain
11
12 updates from the participants or identified caregivers on utilisation of the
13
14 intervention. A summary of this conversation will be documented and the notes will
15
16 be kept privately in a locked cupboard. The participants in the intervention arm will
17
18 not be restricted from receiving standard treatment for their stroke.
19
20
21
22
23
24

25 26 **Control Arm**

27
28 Participants in the control arm will receive standard post stroke rehabilitation
29
30 services. In general, the standard treatment may include provision of physiotherapy
31
32 (45 minutes to 60 minutes) at home or in a clinic facility for the stroke survivors
33
34 based on goals set by the specific therapist or a rehabilitation team.
35
36
37
38
39
40

41 **Outcome Measures**

42 43 **Primary Outcome**

44
45 The primary outcome measure is dependency in activities of daily living and will be
46
47 measured by the Modified Rankin Scale ²⁷ (MRS) at baseline and at six weeks after
48
49 randomisation. The MRS scale measures the degree of disability or dependence in
50
51 the activities of daily living of people who have suffered a stroke in six categories.
52
53
54
55

1
2
3 The scores range from zero (no symptoms) to a maximum of six (dead). A
4
5 dichotomous approach to outcome analysis will be used. Participants' scores will be
6
7
8 categorised into MRS scores of 0-3 and 4-6.
9

10 11 12 13 **Secondary Outcome**

14
15
16 Secondary outcome measures will be:

- 17
18 • Modified Barthel Index ²⁴
- 19
20 • Modified Caregiver Strain Index ²⁸
- 21
22 • Quality of Life measured by WHOQOL – BREF ²⁹
- 23
24 • Use of Health care and Rehabilitation services (Therapy, Hospitalisation and
25
26 medication, AYUSH, traditional practices etc.)
27
28
29

30
31 This information will be collected through questionnaire at baseline and after 6
32
33 weeks. The Smartphone application has an inbuilt monitoring mechanism where the
34
35 usage of the intervention by the participants will be tracked.
36
37
38
39

40
41 Costs for rehabilitative care will be collected from participants both in the treatment
42
43 groups to see whether the Care for Stroke intervention delivered through a
44
45 smartphone reduces the overall costs of care (cost-effectiveness).
46
47

- 48
49 • Direct costs of health care and rehabilitation since the time of stroke
- 50
51 • Indirect costs (A family member giving up paid employment and taking the
52
53 role of a caregiver, travel costs etc.)
54
55

Follow up

An outcome form will be completed at six weeks after randomisation or at death, if either happens sooner. A blinded outcome assessor will evaluate all the outcomes (primary and secondary) at baseline and at six weeks. A relatively short follow-up period has been selected as The Stroke Therapy Academic Industry Round Table (STAIRS) strongly recommends a shorter follow-up period to reduce variation in clinical outcome that could occur due to subsequent stroke events that are unrelated to the trial²⁴. This will also allow accurate assessment of the outcome³⁰.

Adverse events

Adverse events are very common among acute stroke survivors. Some of the expected adverse events during the trial are

1. Death due to any vascular causes (e.g. myocardial infarction, recurrent stroke),
2. Hospitalization due to post-stroke complications such as infections, brain oedema, seizures, deep vein thrombosis, urinary tract infections, pressure sores and shoulder subluxation, dislocation and fracture.
3. Occurrence of secondary stroke.

These events will be documented during follow-up telephone calls and it will be presented to an independent data safety and monitoring committee for unblinded review.

Data Collection and Management

This trial will be centrally coordinated from the trial coordination center (TCC) at the Indian Institute of Public Health (IIPH) Hyderabad. Baseline data will be collected by the investigator and follow-up data will be collected with appropriate translation by an independent blinded outcome assessor on paper forms. These data will be securely scanned and sent to the TCC for entry into the password protected secured electronic database. An independent data safety and monitoring committee (DSMC) will be set up to monitor data collection and management. A trial steering committee will also be set up to oversee the conduct of the trial.

Analysis

The main analyses will compare all those allocated to the 'Care for Stroke' intervention versus those allocated to the standard treatment group on an 'intention-to-treat' basis, irrespective of whether the participants received the treatment allocated or not. The imbalance in recruiting equal number of participants if any will be addressed during the analysis phase using appropriate statistical techniques. The dichotomized MRS scores (0-3 and 4-6) in both the groups will be used to calculate the effect estimates with a measure of precision (95% confidence interval) and presented in the results of the trial. Subgroup analysis for the primary outcome will be based on stroke severity, location of the participant (urban/rural), gender and age at stroke. Interaction tests will also be used to test whether the effect of treatment (if any) differs across these subgroups.

Recruitment of participants:

The trial will identify and recruit participants from the hospital records as well as stroke insurance records available at the Aarogyasri trust until the sample size is achieved. Currently, the average stroke insurance claim rate through this trust is 10-12 stroke survivors per month. Hence it would take approximately 32-36 months for recruiting the proposed number of participants in this trial.

Patient and Public Involvement:

Patients and public were not involved for the purpose of protocol development.

Ethics and Dissemination

Ethical approval for this trial has been obtained from the independent institutional research ethics committee at the public health foundation of India (IIPH) Hyderabad. Results of this trial will be published in relevant, peer-reviewed, indexed, international journal.

References

1. Global Burden of Disease Collaborative Network. Global Burden of Disease Study 2016 (GBD 2016) Disability-Adjusted Life Years and Healthy Life Expectancy 1990-2016. Seattle, United States: Institute for Health Metrics and Evaluation (IHME), 2017.
2. Ferri CP, Schoenborn C, Kaira L, Acosta D, Guerra M, Huang Y, Jacob KS, Llibre Rodriquez JJ, Salas A, Sosa AL, et al. Prevalence of stroke and related burden among older people living in Latin America, India and China. *J Neurol Neurosurg Psychiatry* 2011;82:1074
3. World report on disability. Geneva, Switzerland: WHO, 2011.
http://www.who.int/disabilities/world_report/2011/report/en/
4. Kamalakannan Sureshkumar, Gudlavalleti Aashrai S. V., Gudlavalleti Venkata S. Murthy, Goenka Shifalika, Kuper Hannah. Incidence & prevalence of stroke in India: A systematic review. 2017; 146 (2): 175-185
5. Feigin VL, Lawes CM, Bennett DA, Barker-Collo SL, Parag V. Worldwide stroke incidence and early case fatality reported in 56 population-based studies: a systematic review. *Lancet Neurology*. 2009; 8 (4): 355-369.

- 1
2
3 6. OutParticipant Service Trialists. Therapy-based rehabilitation services for
4 stroke Participants at home. *Cochrane Database of Systematic Reviews*. 2003,
5 Issue 1. Art. No.: CD002925. DOI: 10.1002/14651858.CD002925.
6
7
- 8
9
10 7. Turner-Stokes L, Nair A, Sedki I, Disler PB, Wade DT. Multi-disciplinary
11 rehabilitation for acquired brain injury in adults of working age. *Cochrane*
12 *Database of Systematic Reviews*. 2005, Issue 3. Art. No.: CD004170. DOI:
13 10.1002/14651858.CD004170.pub2.
14
15
- 16 8. Forster A, Brown L, Smith J, House A, Knapp P, Wright JJ, Young J.
17 Information provision for stroke Participants and their caregivers. *Cochrane*
18 *Database of Systematic Reviews*. 2012, Issue 11. Art. No.: CD001919. DOI:
19 10.1002/14651858.CD001919.pub3.
20
21
- 22 9. Sarfo FS, Ovbiagele B. Mobile health for stroke: a promising concept for
23 research and practice. *mHealth*. 2017; 3: 4. doi:10.21037/mhealth.2017.02.01.
24
25
- 26 10. Laver KE, Schoene D, Crotty M, George S, Lannin NA, Sherrington C.
27 Telerehabilitation services for stroke. *Cochrane Database of Systematic Reviews*.
28 2013, Issue 12. Art. No.: CD010255. DOI: 10.1002/14651858.CD010255.pub2.
29
30
- 31 11. Laver KE, George S, Thomas S, Deutsch JE, Crotty M. Virtual reality for stroke
32 rehabilitation. *Cochrane Database of Systematic Reviews*. 2015, Issue 2. Art. No.:
33 CD008349. DOI: 10.1002/14651858.CD008349.pub3.
34
35
- 36 12. Kamalakannan, Sureshkumar et al. Rehabilitation needs of Stroke Survivors
37 after Discharge from Hospital in India. *Archives of Physical Medicine and*
38
39
40
41
42
43
44
45
46
47
48
49
50
51
52
53
54
55

- 1
2
3 Rehabilitation; 2016. Volume 97, Issue 9, 1526 - 1532.e9.
4
5
6 13. WHO. *The International Classification of Functioning, Disability and Health*.
7
8 World Health Organization. Geneva, Switzerland: WHO, 2001.
9
10
11 14. Sureshkumar K, Murthy GVS, Munuswamy S, S. Goenka and H Kuper. 'Care
12
13 for Stroke' a web-based, Smartphone-enabled educational intervention for
14
15 management of physical disabilities following stroke: Feasibility in the Indian
16
17 context. *BMJ Innovations* 2015; 1 127–36.
18
19
20
21 15. Peter Craig, Mark Petticrew, Developing and evaluating complex
22
23 interventions: Reflections on the 2008 MRC guidance. *International Journal of*
24
25 *Nursing Studies*. 2013; 50 (5): 585-87.
26
27
28
29 16. Craig P. Foreword. In: Richards D, Rahm Hallberg I. *Complex interventions in*
30
31 *health: an overview of research methods*. Routledge, 2015.
32
33
34 17. World Health Organization mHealth: New Horizons for Health through
35
36 Mobile Technologies: Based on the Findings of the Second Global Survey on
37
38 eHealth (Global Observatory for eHealth Series, Volume 3) 2011. [2013-0523].
39
40
41 18. Sureshkumar K, Murthy GVS, Natarajan S, Naveen C, Goenka S, Kuper H.
42
43 Evaluation of the feasibility and acceptability of the 'Care for Stroke'
44
45 intervention in India, a smartphone-enabled, carer-supported, educational
46
47 intervention for management of disability following stroke. *BMJ Open*
48
49 2016;6:e009243. doi:10.1136/bmjopen-2015009243
50
51
52
53
54
55
56
57
58
59
60

- 1
2
3 19. Bowen S, Zwi AB. Pathways to “Evidence-Informed” Policy and Practice: A
4 Framework for Action. *PLoS Medicine*. 2005;2(7):e166.
5
6 doi:10.1371/journal.pmed.0020166.
7
8
9
10 20. Peto R, Baigent C. Trials: the next 50 years : Large scale randomised evidence
11 of moderate benefits . *BMJ : British Medical Journal*. 1998;317(7167):1170-1171.
12
13
14 21. WHO MONICA Project Investigators. The World Health Organization
15 MONICA Project (Monitoring trends and determinants in cardiovascular
16 disease). *J Clin Epidemiol*. 1988; (41): 105-114.
17
18
19
20
21
22 22. Department of Health and Human Services. The National Institute of
23 Neurological Disorders and Stroke (NINDS). *NIH Stroke Scale Training, Part*
24 *2. Basic Instruction*. 2010. <https://archive.org/details/gov.hhs.ninds.stroke.1.2>
25 (accessed 3 August 2010).
26
27
28
29
30
31
32 23. Ver Hage A. The NIH stroke scale: a window into neurological status.
33 *Nurse.Com; Nursing Spectrum* (Greater Chicago). 2011; 24 (15):44-49.
34
35
36
37 24. Mahoney F, Barthel D. Functional evaluation: the Barthel Index. *Md Med*
38 *J*.1965; 14:61–65.
39
40
41
42
43 25. Cumming TB, Blomstrand C, Bernhardt J, Linden T. The NIH stroke scale can
44 establish cognitive function after stroke. *Cerebrovasc Dis*. 2010; 30(1):7-14.
45
46
47
48 26. Langhorne P, Taylor G, Murray G, Dennise M, Anderson C, Bautz Holter E,
49 Dey P, Indredavik B, Mayo N, Power M, et al. Early supported discharge
50
51
52
53
54
55

- 1
2
3 services for stroke Participants: a meta-analysis of individual Participants'
4
5 data. *Lancet*. 2005; 365(9458):501–6.
6
7
8 27. Rankin L. Cerebral vascular accidents in Participants over the age of 60. II.
9
10 Prognosis. *Scott Med J*. 1957; 2: 200-215.
11
12
13 28. Thornton, M., & Travis, S.S. Analysis of the reliability of the Modified
14
15 Caregiver Strain Index. *The Journal of Gerontology, Series B*, 2003.
16
17
18 Psychological Sciences and Social Sciences, 58B(2), S127-132.
19
20
21 29. World Health Organization's. Quality of Life group: WHOQOL-sBREF
22
23 Introduction. Administration and Scoring. Field Trial version. 1996
24
25
26 30. Aziz NA, Leonardi-Bee J, Phillips MF, Gladman JR, Legg L, Walker MF.
27
28 Therapy-based rehabilitation services for Participants living at home more
29
30 than one year after stroke. *Cochrane Database of Systematic Reviews*. 2008, Issue
31
32
33 2. Art. No.: CD005952. DOI: 10.1002/14651858.CD005952.pub2.
34
35

Authors' Contributions

36
37
38
39
40 K Sureshkumar (SK) conceived, designed and drafted the manuscript. Prof GVS
41
42
43 Murthy and Dr Hannah Kuper played a crucial role in conception of the research
44
45
46 study and provided substantial guidance in designing and conducting evaluation.
47
48
49

Funding

1
2
3 This work was funded and supported **The Wellcome Trust DBT India Alliance**.

4
5 Grant Code: IA/CPHE/16/1/502650
6
7
8
9

10 **Competing Interests**

11
12
13 The authors declare that they have no competing interests, financial or non-financial.
14

15 **Acknowledgement**

16
17
18 We thank The Wellcome-trust-DBT India Alliance for funding the research study.
19

20 We thank the independent institutional research ethics committee of the PHFI-Indian
21
22
23 Institute of Public Health - Hyderabad for granting scientific and ethics approval to
24
25
26 conduct this research study. We thank the consultants from Suchir softech and Selva
27
28
29 photography for developing the software application and digitization of the content
30
31 of the intervention.
32
33
34
35

36 **Figure Legends**

- 37
38 1. Figure – 1: Flow Chart of the Care for Stroke Trial
39
40
41
42
43
44
45
46
47
48
49
50
51
52
53
54
55
56
57
58
59
60

1
2
3
4
5
6
7
8
9
10
11
12
13
14
15
16
17
18
19
20
21
22
23
24
25
26
27
28
29
30
31
32
33
34
35
36
37
38
39
40
41
42
43
44
45
46
47
48
49
50
51
52
53
54
55
56
57
58
59
60

Figure – 1: Flow Chart of the Care for Stroke Trial

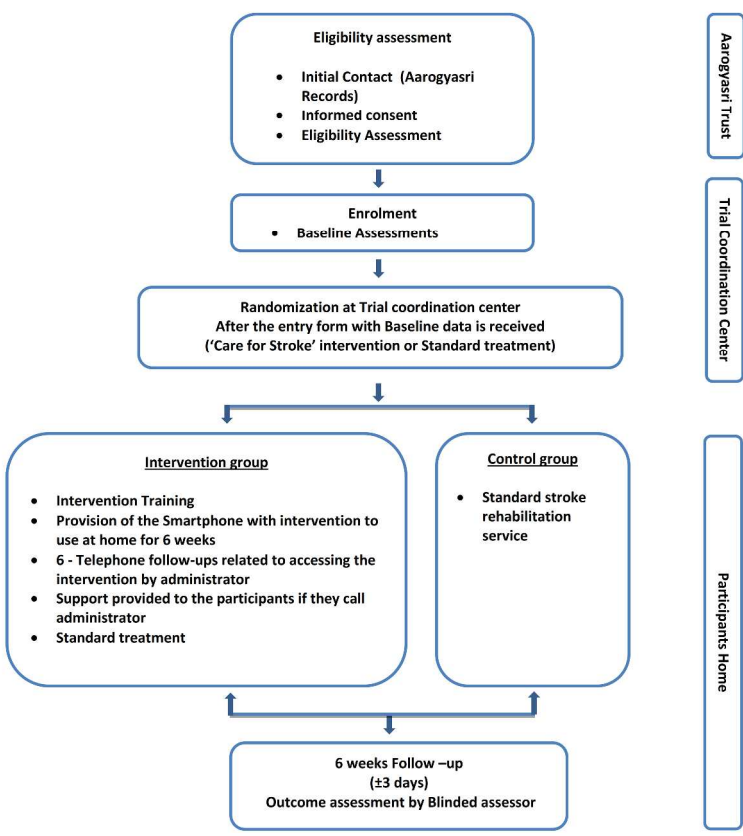


Figure – 1: Flow Chart of the Care for Stroke Trial Process



STANDARD PROTOCOL ITEMS: RECOMMENDATIONS FOR INTERVENTIONAL TRIALS

SPIRIT 2013 Checklist: Recommended items to address in a clinical trial protocol and related documents*

Section/item	Item No	Description	Addressed on page number
Administrative information			
Title	1	Descriptive title identifying the study design, population, interventions, and, if applicable, trial acronym	<u>1</u>
Trial registration	2a	Trial identifier and registry name. If not yet registered, name of intended registry	<u>4</u>
	2b	All items from the World Health Organization Trial Registration Data Set	<u>4</u>
Protocol version	3	Date and version identifier	<u>1</u>
Funding	4	Sources and types of financial, material, and other support	<u>25</u>
Roles and responsibilities	5a	Names, affiliations, and roles of protocol contributors	<u>1</u>
	5b	Name and contact information for the trial sponsor	<u>25</u>
	5c	Role of study sponsor and funders, if any, in study design; collection, management, analysis, and interpretation of data; writing of the report; and the decision to submit the report for publication, including whether they will have ultimate authority over any of these activities	<u>N/A</u>
	5d	Composition, roles, and responsibilities of the coordinating centre, steering committee, endpoint adjudication committee, data management team, and other individuals or groups overseeing the trial, if applicable (see Item 21a for data monitoring committee)	<u>19</u>

1	Introduction				
2					
3	Background and rationale	6a	Description of research question and justification for undertaking the trial, including summary of relevant studies (published and unpublished) examining benefits and harms for each intervention	<u>6-8</u>	
4					
5					
6		6b	Explanation for choice of comparators	<u>6-8</u>	
7					
8	Objectives	7	Specific objectives or hypotheses	<u>9</u>	
9					
10	Trial design	8	Description of trial design including type of trial (eg, parallel group, crossover, factorial, single group), allocation ratio, and framework (eg, superiority, equivalence, noninferiority, exploratory)	<u>9,14</u>	
11					
12					
13					
14	Methods: Participants, interventions, and outcomes				
15					
16	Study setting	9	Description of study settings (eg, community clinic, academic hospital) and list of countries where data will be collected. Reference to where list of study sites can be obtained	<u>11</u>	
17					
18					
19	Eligibility criteria	10	Inclusion and exclusion criteria for participants. If applicable, eligibility criteria for study centres and individuals who will perform the interventions (eg, surgeons, psychotherapists)	<u>11</u>	
20					
21					
22	Interventions	11a	Interventions for each group with sufficient detail to allow replication, including how and when they will be administered	<u>14-15</u>	
23					
24			11b	Criteria for discontinuing or modifying allocated interventions for a given trial participant (eg, drug dose change in response to harms, participant request, or improving/worsening disease)	<u>17</u>
25					
26					
27		11c	Strategies to improve adherence to intervention protocols, and any procedures for monitoring adherence (eg, drug tablet return, laboratory tests)	<u>14-15</u>	
28					
29					
30		11d	Relevant concomitant care and interventions that are permitted or prohibited during the trial	<u>14-15</u>	
31					
32	Outcomes	12	Primary, secondary, and other outcomes, including the specific measurement variable (eg, systolic blood pressure), analysis metric (eg, change from baseline, final value, time to event), method of aggregation (eg, median, proportion), and time point for each outcome. Explanation of the clinical relevance of chosen efficacy and harm outcomes is strongly recommended	<u>16-17</u>	
33					
34					
35	Participant timeline	13	Time schedule of enrolment, interventions (including any run-ins and washouts), assessments, and visits for participants. A schematic diagram is highly recommended (see Figure)	<u>Figure-1</u>	
36					
37					
38					
39					
40					
41					
42					
43					
44					
45					
46					

1	Sample size	14	Estimated number of participants needed to achieve study objectives and how it was determined, including clinical and statistical assumptions supporting any sample size calculations	<u>13</u>
2				
3				
4	Recruitment	15	Strategies for achieving adequate participant enrolment to reach target sample size	<u>11</u>
5				
6	Methods: Assignment of interventions (for controlled trials)			
7				
8	Allocation:			
9				
10	Sequence	16a	Method of generating the allocation sequence (eg, computer-generated random numbers), and list of any factors for stratification. To reduce predictability of a random sequence, details of any planned restriction (eg, blocking) should be provided in a separate document that is unavailable to those who enrol participants or assign interventions	<u>12-13</u>
11	generation			
12				
13				
14				
15				
16	Allocation	16b	Mechanism of implementing the allocation sequence (eg, central telephone; sequentially numbered, opaque, sealed envelopes), describing any steps to conceal the sequence until interventions are assigned	<u>12-13</u>
17	concealment			
18	mechanism			
19				
20	Implementation	16c	Who will generate the allocation sequence, who will enrol participants, and who will assign participants to interventions	<u>12-13</u>
21				
22				
23				
24	Blinding (masking)	17a	Who will be blinded after assignment to interventions (eg, trial participants, care providers, outcome assessors, data analysts), and how	<u>17</u>
25				
26				
27		17b	If blinded, circumstances under which unblinding is permissible, and procedure for revealing a participant's allocated intervention during the trial	<u>18</u>
28				
29				
30				
31	Methods: Data collection, management, and analysis			
32				
33	Data collection	18a	Plans for assessment and collection of outcome, baseline, and other trial data, including any related processes to promote data quality (eg, duplicate measurements, training of assessors) and a description of study instruments (eg, questionnaires, laboratory tests) along with their reliability and validity, if known. Reference to where data collection forms can be found, if not in the protocol	<u>17-18</u>
34	methods			
35				
36				
37				
38				
39		18b	Plans to promote participant retention and complete follow-up, including list of any outcome data to be collected for participants who discontinue or deviate from intervention protocols	<u>16-17</u>
40				
41				
42				
43				
44				
45				
46				

1	Data management	19	Plans for data entry, coding, security, and storage, including any related processes to promote data quality (eg, double data entry; range checks for data values). Reference to where details of data management procedures can be found, if not in the protocol	<u>19</u>
2				
3				
4				
5	Statistical methods	20a	Statistical methods for analysing primary and secondary outcomes. Reference to where other details of the statistical analysis plan can be found, if not in the protocol	<u>19</u>
6				
7				
8		20b	Methods for any additional analyses (eg, subgroup and adjusted analyses)	<u>19</u>
9				
10		20c	Definition of analysis population relating to protocol non-adherence (eg, as randomised analysis), and any statistical methods to handle missing data (eg, multiple imputation)	<u>19</u>
11				
12				
13				
14	Methods: Monitoring			
15				
16	Data monitoring	21a	Composition of data monitoring committee (DMC); summary of its role and reporting structure; statement of whether it is independent from the sponsor and competing interests; and reference to where further details about its charter can be found, if not in the protocol. Alternatively, an explanation of why a DMC is not needed	<u>19</u>
17				
18				
19				
20				
21				
22		21b	Description of any interim analyses and stopping guidelines, including who will have access to these interim results and make the final decision to terminate the trial	<u>19</u>
23				
24				
25	Harms	22	Plans for collecting, assessing, reporting, and managing solicited and spontaneously reported adverse events and other unintended effects of trial interventions or trial conduct	<u>19</u>
26				
27				
28	Auditing	23	Frequency and procedures for auditing trial conduct, if any, and whether the process will be independent from investigators and the sponsor	<u>19</u>
29				
30				
31				
32	Ethics and dissemination			
33				
34	Research ethics approval	24	Plans for seeking research ethics committee/institutional review board (REC/IRB) approval	<u>20</u>
35				
36				
37	Protocol amendments	25	Plans for communicating important protocol modifications (eg, changes to eligibility criteria, outcomes, analyses) to relevant parties (eg, investigators, REC/IRBs, trial participants, trial registries, journals, regulators)	<u>20</u>
38				
39				
40				
41				
42				

1	Consent or assent	26a	Who will obtain informed consent or assent from potential trial participants or authorised surrogates, and how (see Item 32)	<u>13</u>
2				
3				
4		26b	Additional consent provisions for collection and use of participant data and biological specimens in ancillary studies, if applicable	<u>13</u>
5				
6				
7	Confidentiality	27	How personal information about potential and enrolled participants will be collected, shared, and maintained in order to protect confidentiality before, during, and after the trial	<u>18</u>
8				
9				
10	Declaration of interests	28	Financial and other competing interests for principal investigators for the overall trial and each study site	<u>25</u>
11				
12				
13	Access to data	29	Statement of who will have access to the final trial dataset, and disclosure of contractual agreements that limit such access for investigators	<u>18-19</u>
14				
15				
16	Ancillary and post-trial care	30	Provisions, if any, for ancillary and post-trial care, and for compensation to those who suffer harm from trial participation	<u>N/A</u>
17				
18				
19				
20	Dissemination policy	31a	Plans for investigators and sponsor to communicate trial results to participants, healthcare professionals, the public, and other relevant groups (eg, via publication, reporting in results databases, or other data sharing arrangements), including any publication restrictions	<u>20</u>
21				
22				
23				
24		31b	Authorship eligibility guidelines and any intended use of professional writers	<u>N/A</u>
25				
26		31c	Plans, if any, for granting public access to the full protocol, participant-level dataset, and statistical code	<u>4,20</u>
27				
28				
29	Appendices			
30				
31	Informed consent materials	32	Model consent form and other related documentation given to participants and authorised surrogates	<u>NO</u>
32				
33				
34	Biological specimens	33	Plans for collection, laboratory evaluation, and storage of biological specimens for genetic or molecular analysis in the current trial and for future use in ancillary studies, if applicable	<u>N/A</u>
35				
36				

*It is strongly recommended that this checklist be read in conjunction with the SPIRIT 2013 Explanation & Elaboration for important clarification on the items. Amendments to the protocol should be tracked and dated. The SPIRIT checklist is copyrighted by the SPIRIT Group under the Creative Commons [“Attribution-NonCommercial-NoDerivs 3.0 Unported”](https://creativecommons.org/licenses/by-nc-nd/3.0/) license.